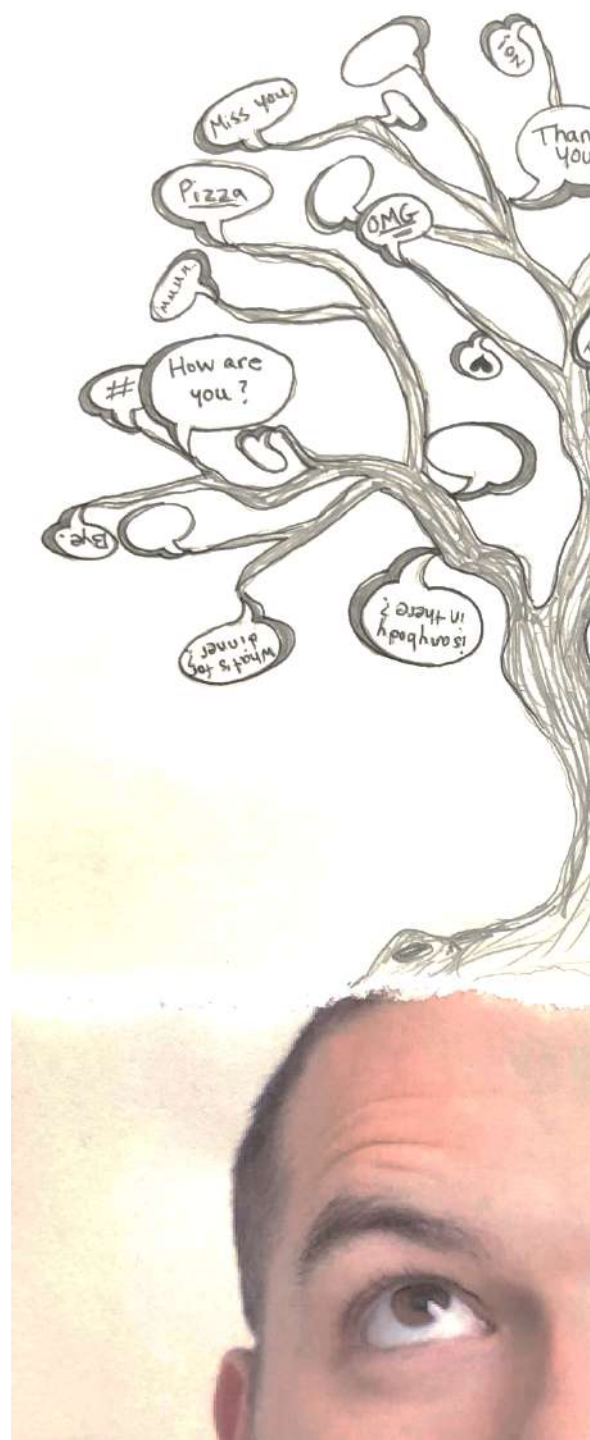


Photo-Surreal

Create a surreal drawing that interacts with a photograph.



Supplies

Paper

Q: What kind of paper?

A: Any kind of paper will work, but heavier paper like drawing paper or cardstock will give you the best results.

Q: What size?

A: Regular letter size is good, but if you have bigger paper and a bigger concept, go for it!

Scissors

Just scissors. Maybe.

Drawing Tools

Q: Like What?

A: WHATEVER YOU HAVE! Pencil and eraser is fine. If you have more, use more. I use pencil, fineline sharpie, and colored pencils in my examples. If you want to paint, PAINT! If you only want to shade, SHADE!

Glue

Glue sticks will give you the easiest and smoothest results, but you can use real glue brushed on with your finger, too!

Photograph

Q: A photo of what?

A: The best photos will be ones you take yourself, or of yourself. These can be of your room, somewhere outdoors, a pet, whatever! You can also find images on the internet to use if you have an idea you can't photograph.

Q: Where do I get this?

A: If you can print at home, printing a photo is the best (on regular paper). If you can print it, you can choose the size as well as the image with more variety.

Q: What if I can't print at home?

A: Use magazine images! Newspaper photos! An old card you got for Christmas in 2012 that has no real sentimental value. Wherever.

Inspiration



Ben Heine: Pencil vs Camera

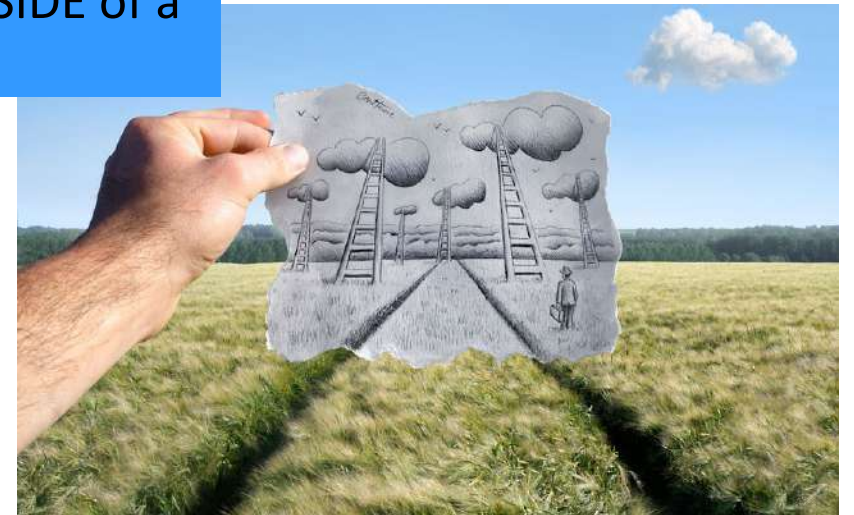
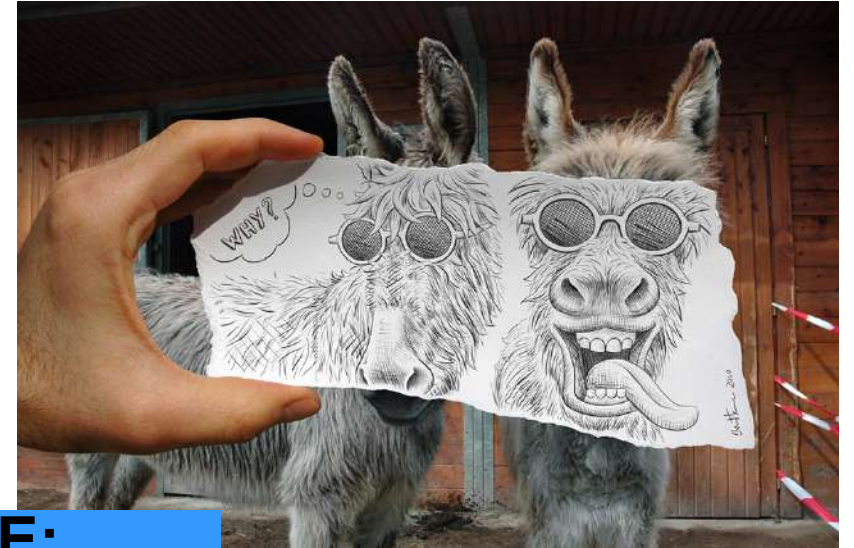
Check out more of his work [here](#).

NOTICE:

Ben makes drawings
INSIDE of a photograph.
We are going to put
photographs INSIDE of a
drawing.

WARNING:

You are not allowed to
use any of his ideas, nor
the ideas I provide in my
examples. These are for
inspiration, but you
need to make your work
your own!



Rulez

Your drawing interaction **MUST BE surreal**

Q: What does surreal mean?

A: Surreal mean bizarre or unusual. Surreal things are not thing you expect to see.

Q: I still don't understand. Where can I learn more?

A: Salvador Dali is the most famous surrealist artist of all time. Google "surreal" and you will see his work right away! Another good example of surreal art is Rene Magritte.



Things should line up.

Q: You mean they should touch each other?

A: Sort of. Make sure the "lines" of your photo make sense with the "lines" that you draw. Your photo and drawing should look like they belong together, even if it is weird.

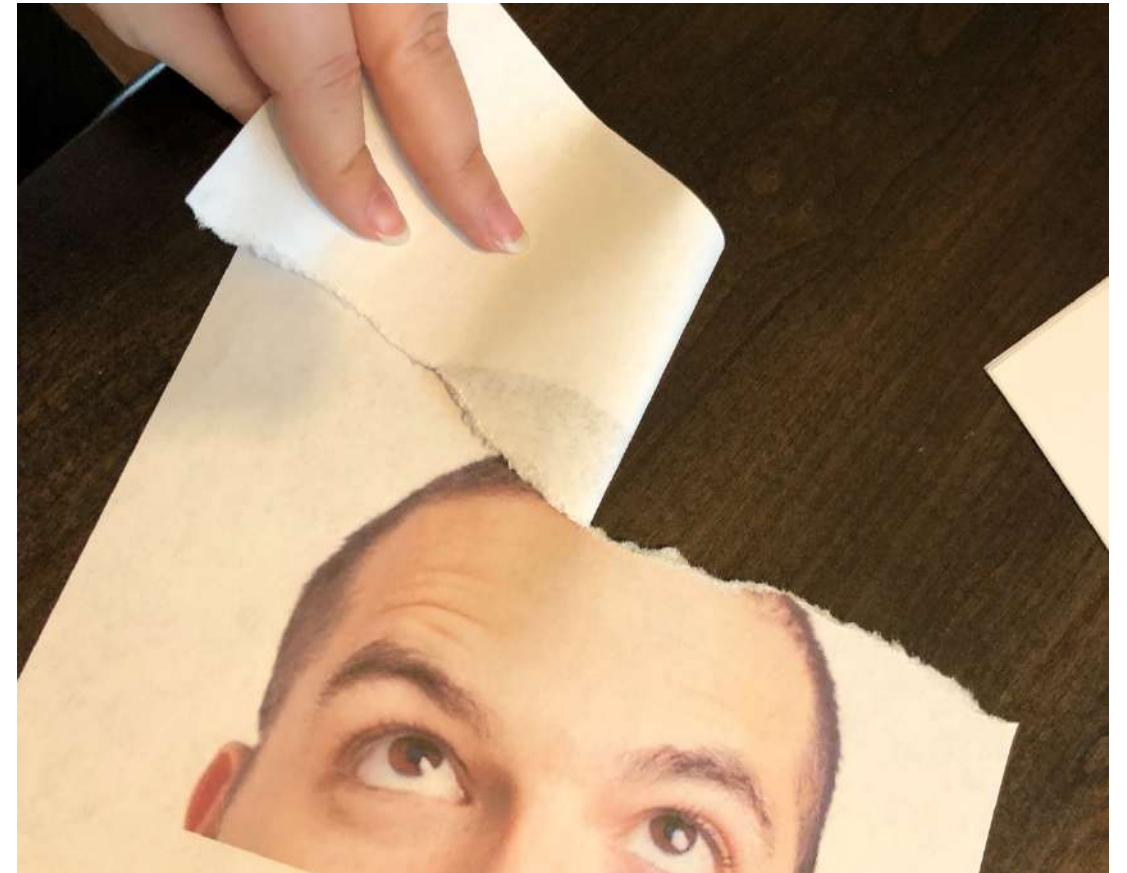
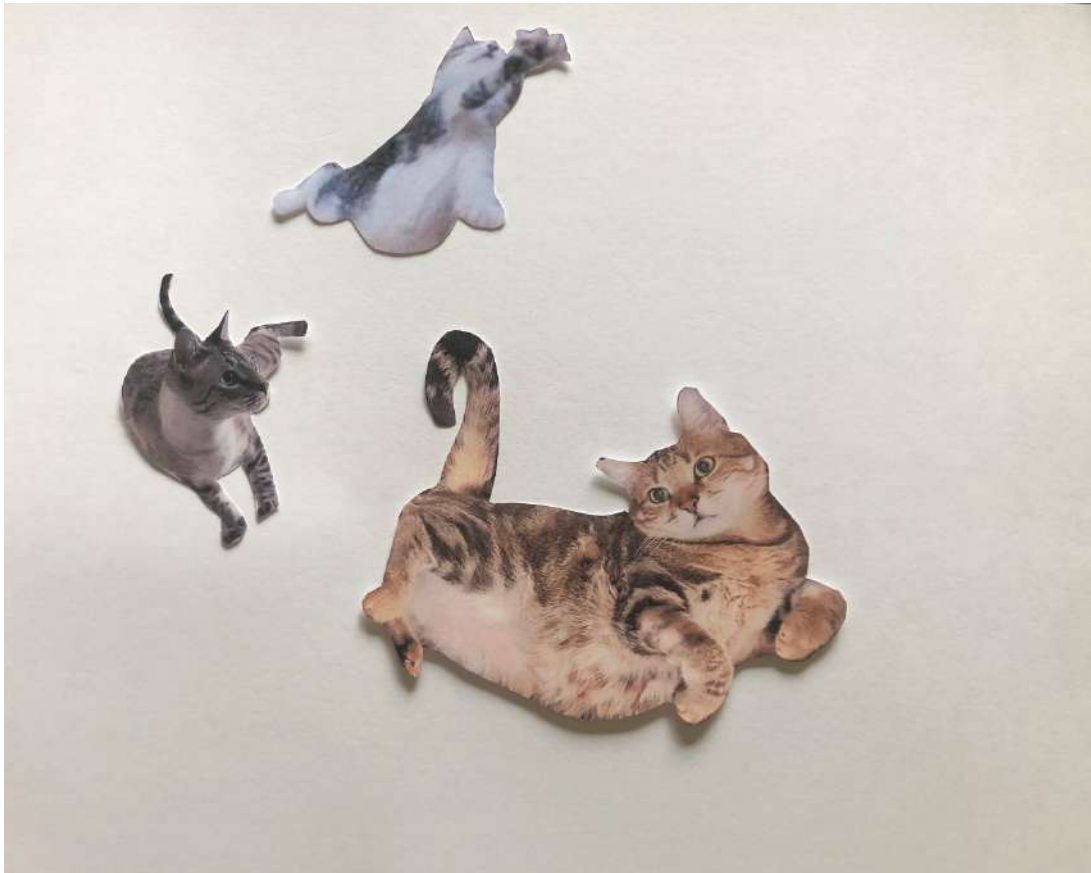
The final product should look "finished".

Q: How do I know when I am done?

A: Your drawn surrealist image should be shaded, colored, painted, outlined, or some other similar method. It should look "done" because it is done. That means that you have erased extra bits and defined your edges where you needed to. A pencil sketch is not "done".

Take (or find) a Photo

- You can take these yourself or find them online or in magazines.
- Either cut them out (see, I told you that you MIGHT need scissors) or rip them to make your edge less defined.



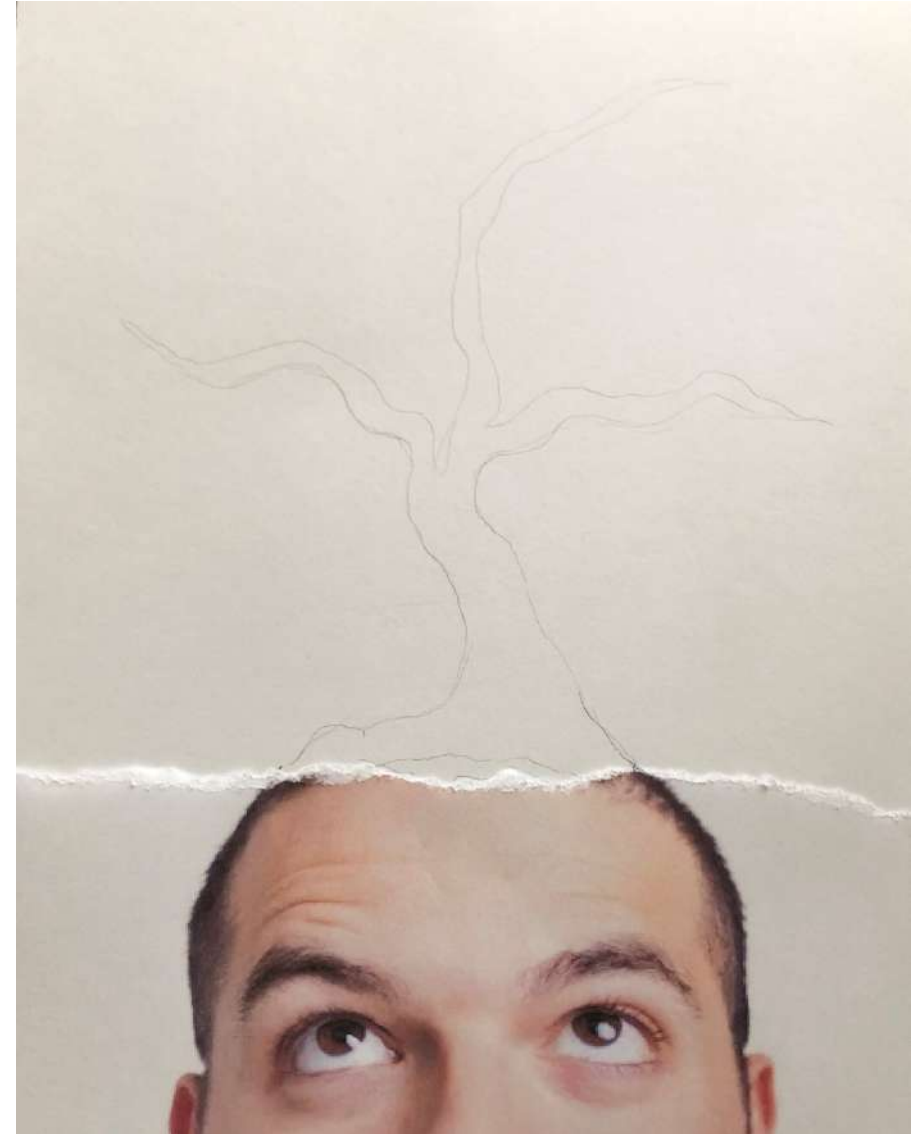
Wait until THE END to glue

- **Pro Tip:** Pencil and paint do not like to work on top of dried glue. It won't ever quite match the same.
- If you glue first, you are more likely to end up with a "Halo" around your work where you can't get color.
- **Pro Tip #2:** Always glue your edges by flipping your photo upside down on a separate sheet of paper. Only get glue on the edges, the middle mostly doesn't matter, and then place and press onto your paper. I use the cap from the glue stick or a plastic card to make it smooth and flat.
- If you don't have a glue stick, use small amounts of liquid glue on the edge of your finger.



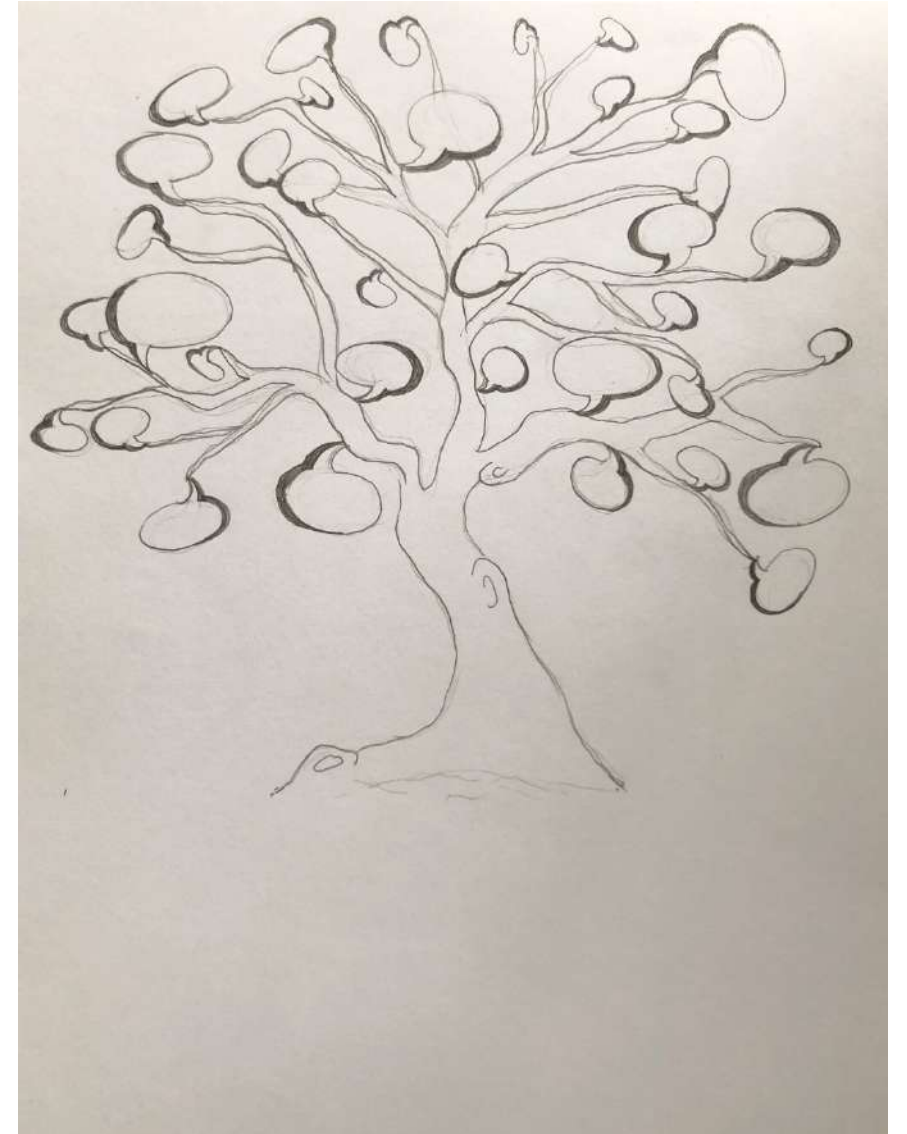
Decide basics, like layout/placement

- I, for example, decided that one of my cats would not work after all, so I removed him.
- My head guy had a cut-off edge, so he made the most sense at the bottom of my paper.



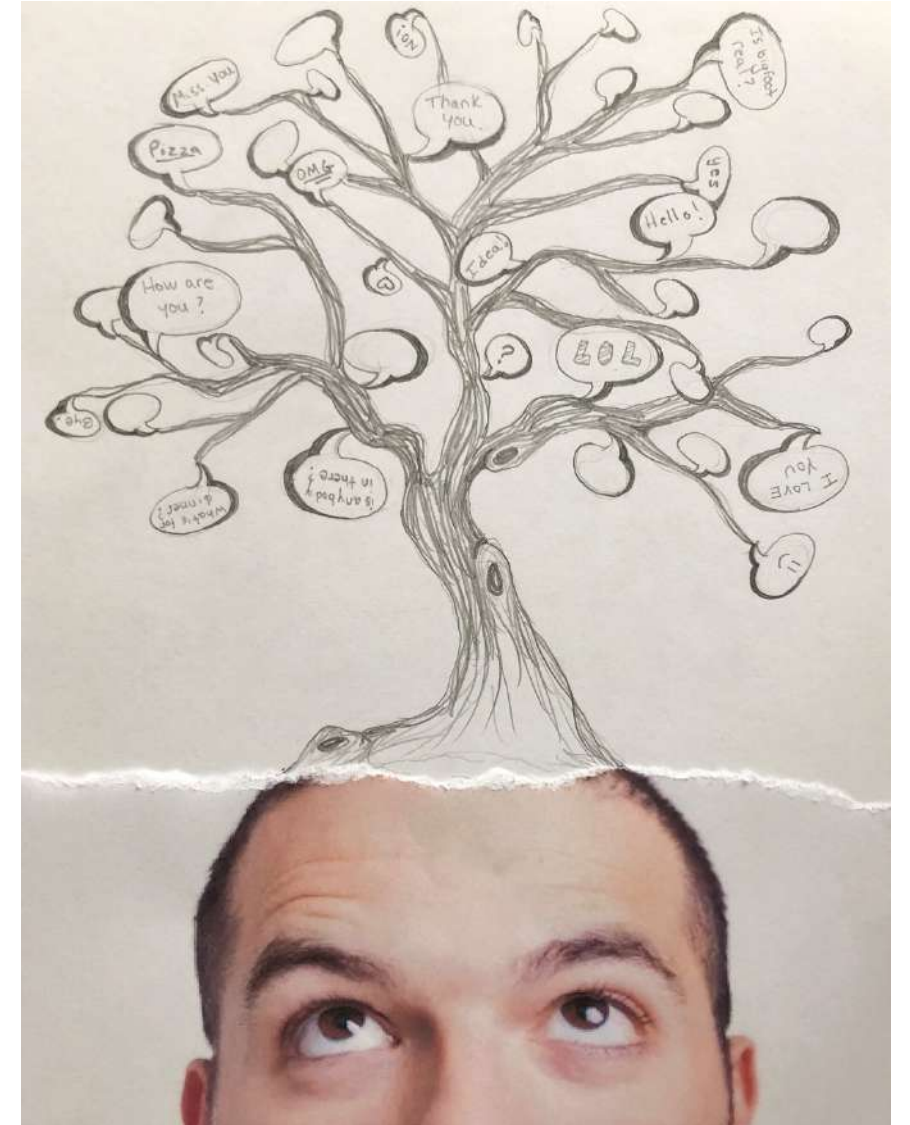
Begin adding details

- Adding more details give you room to be creative and to make your drawing more “believable” even though it is supposed to be strange.



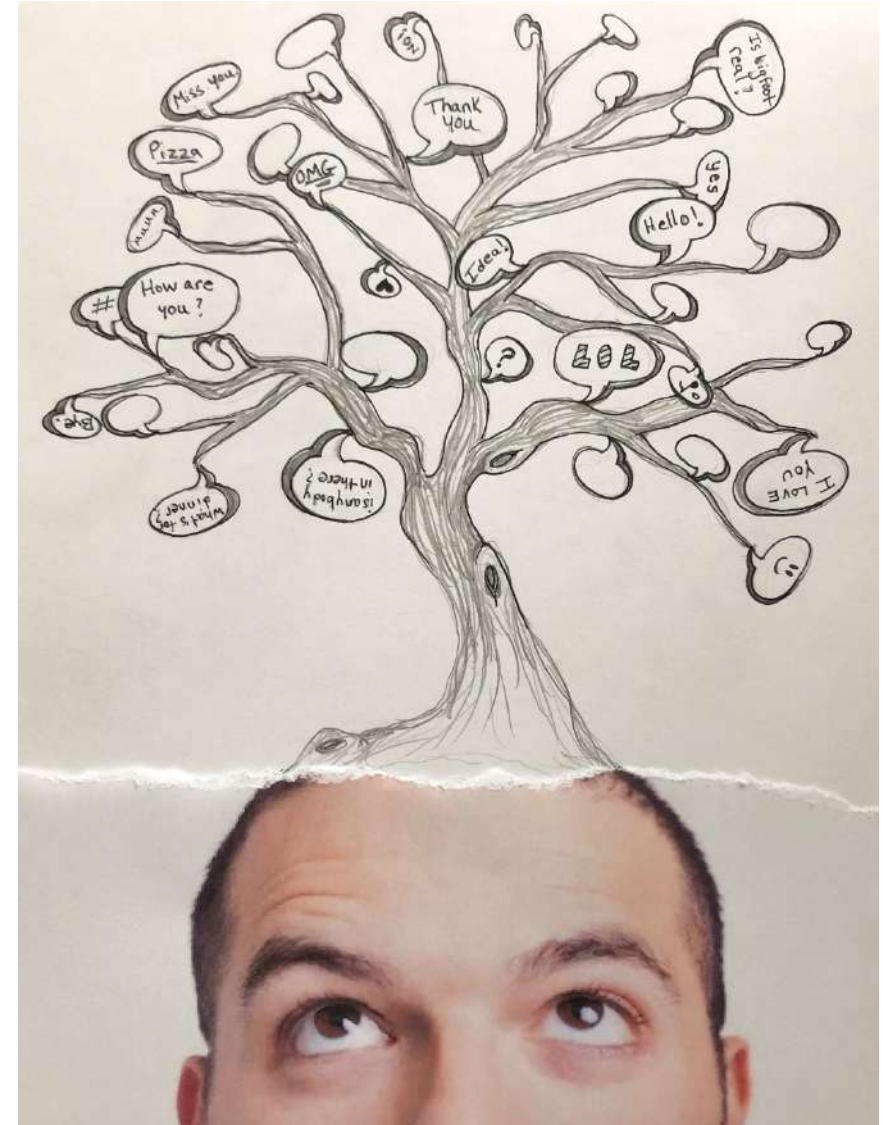
Add Shading

- Even if you plan to color or paint, shading is a good way to start adding depth and a sense of layering to your work. You can't have "surreal" with the "real", so there needs to be some level of real-life lighting and detail.



Add More “Finishing” (If you want)

- You could stop here, but it will look better if you do a little more. Add a bit of color, maybe outline clean edges in dark pencil or thin markers.



Go “All in”

- Sometimes discretion is advised, but you know the old saying: Go big or go home.

