

Embroidered Photos

MUST BE A PHOTO YOU TOOK!!!!!!!

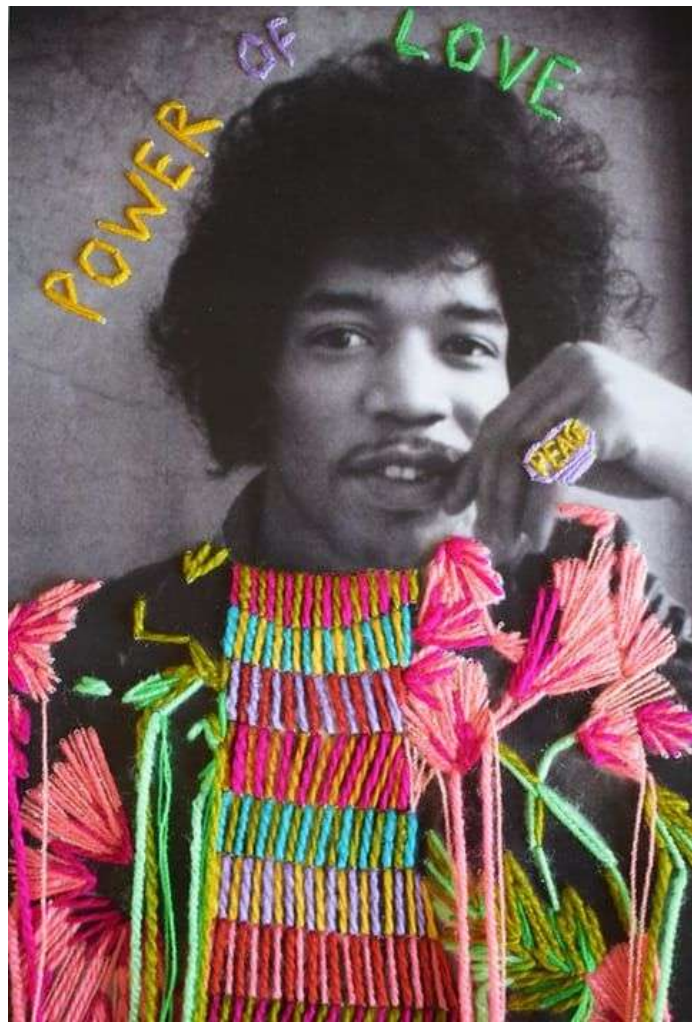
School appropriate

You can photoshop 2
photos together and
add the stitching on top



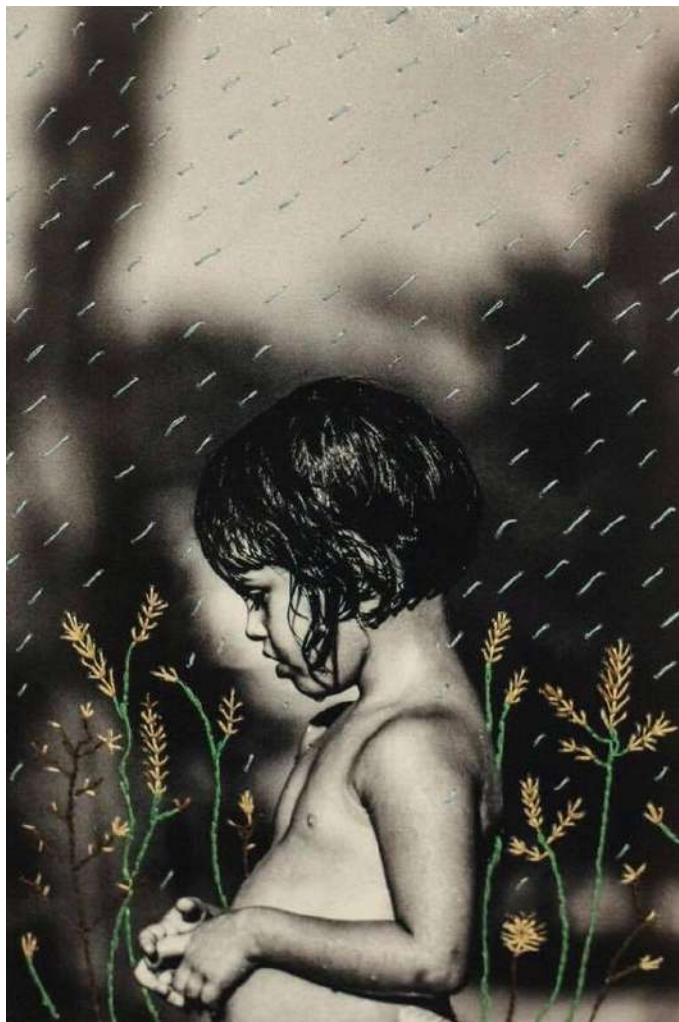


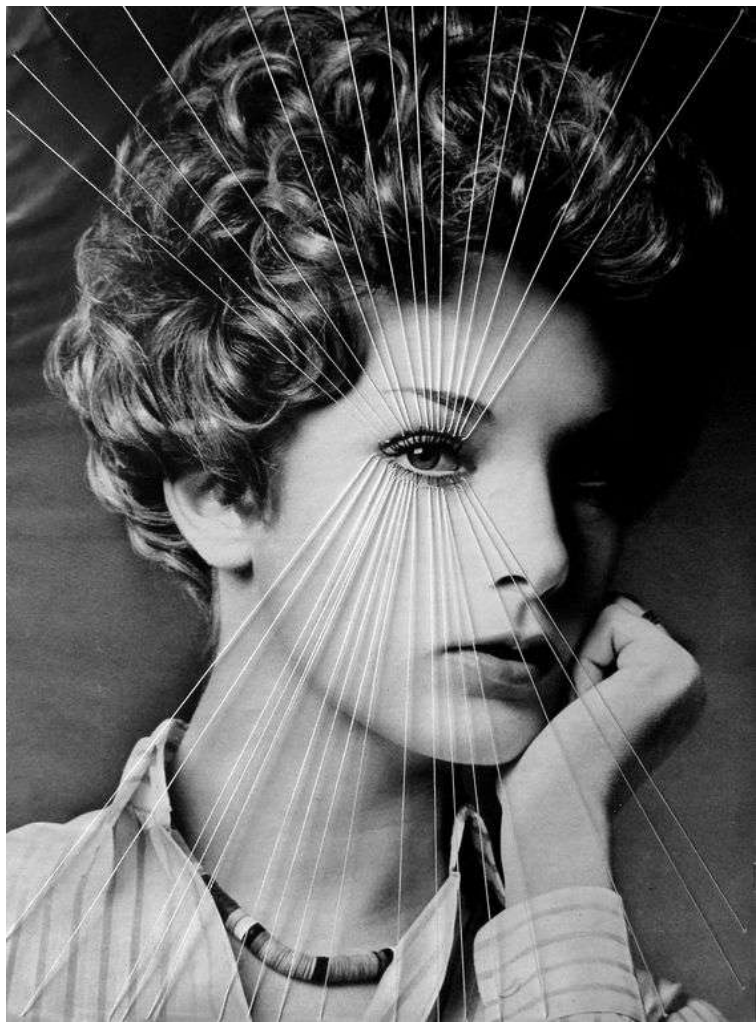












Pre plan

What is your Color scheme ?

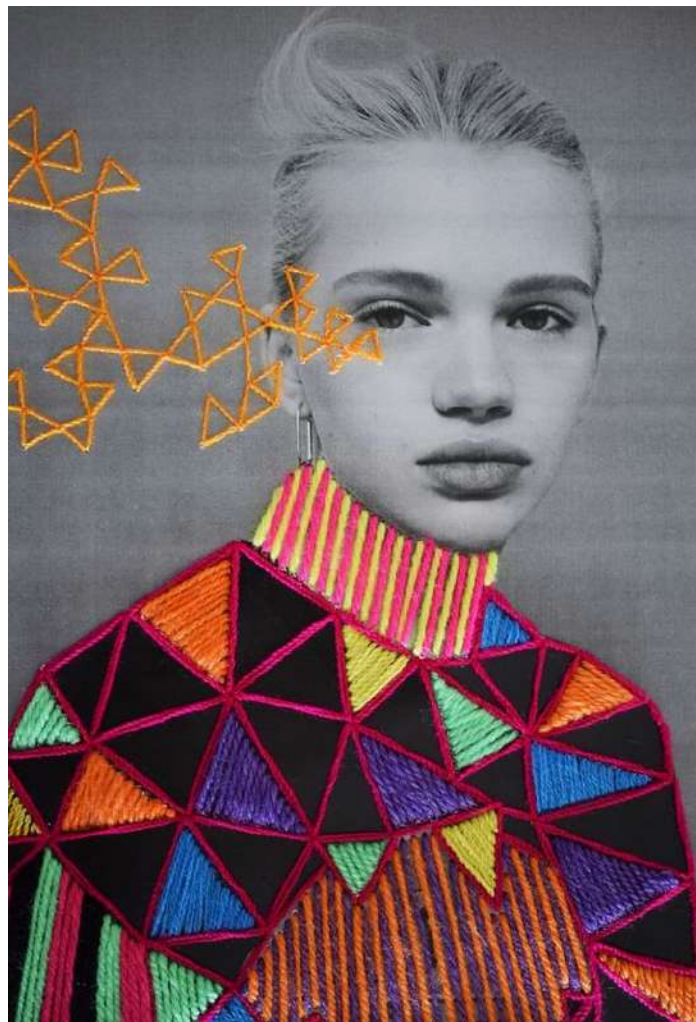
What type of stitch **Pattern** are you using ?

Design *** how will your thread interact with paper?





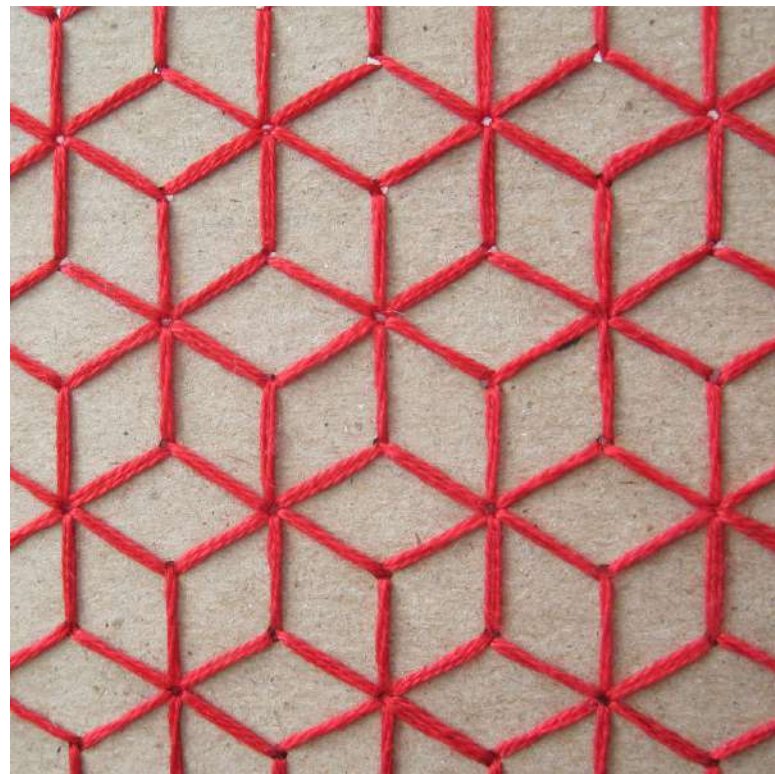
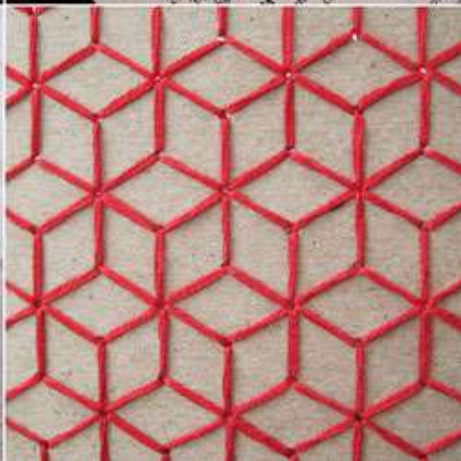
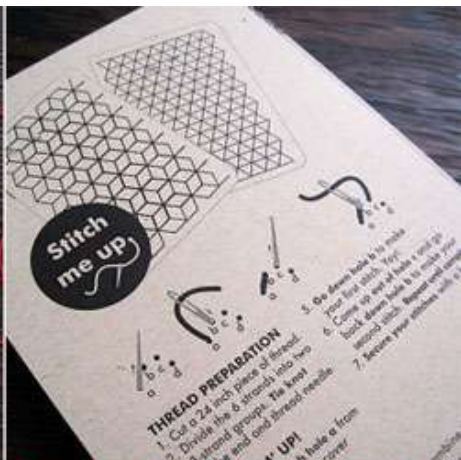
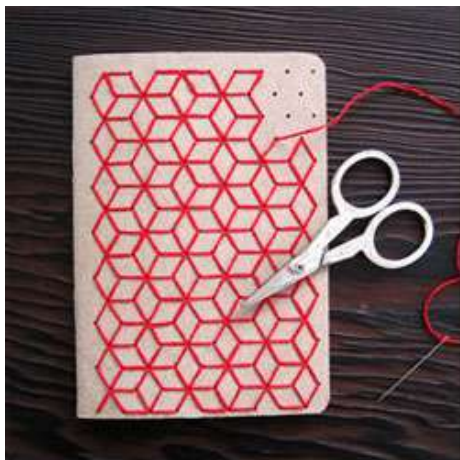








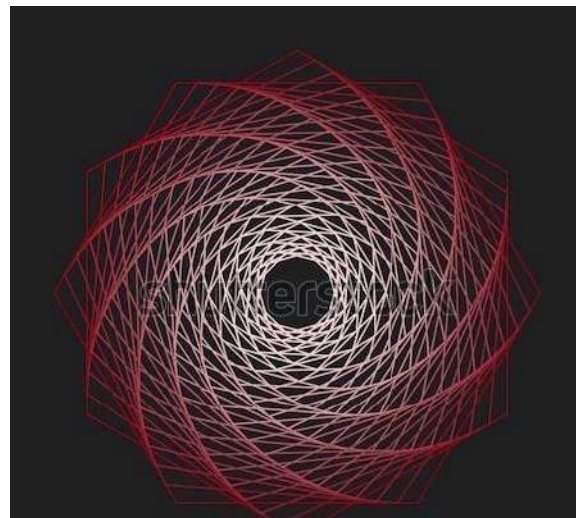
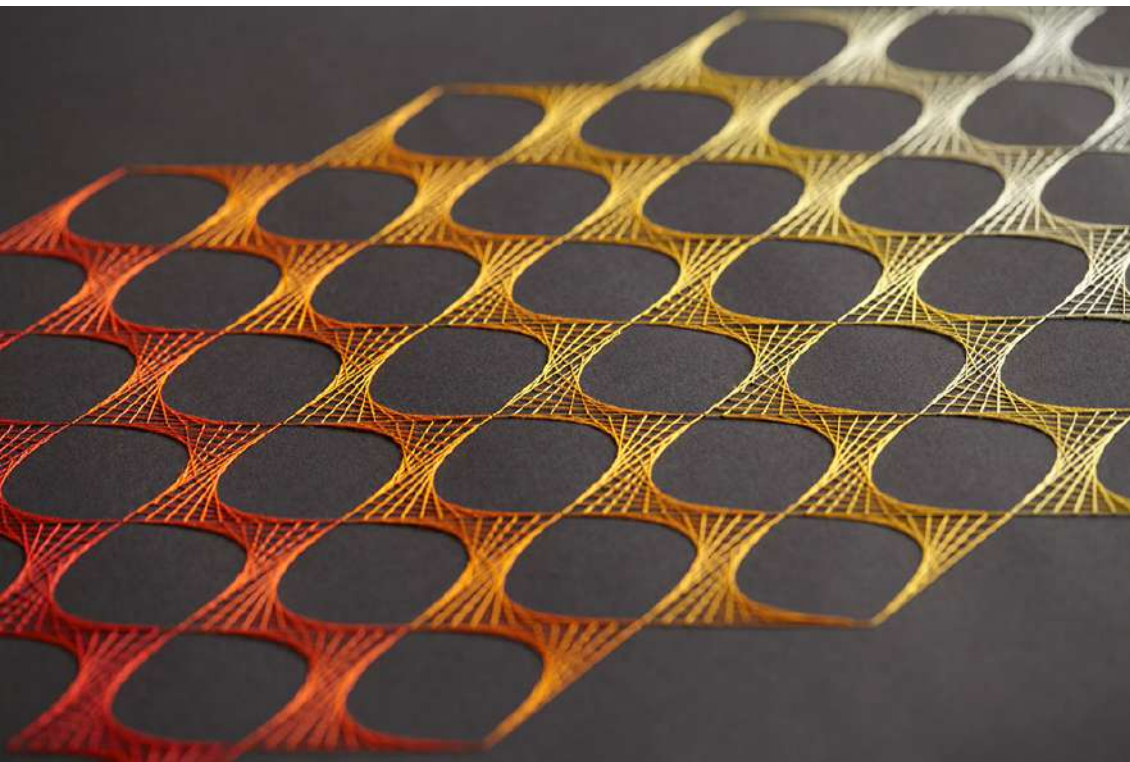


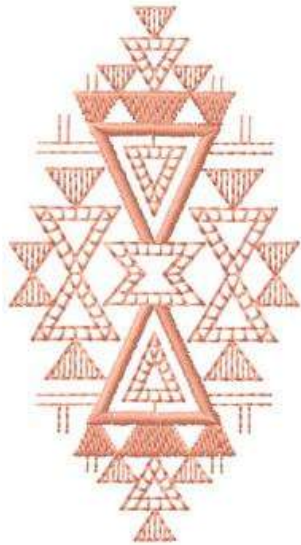




Transition of color

Try to incorporate a gradient or blend of colors

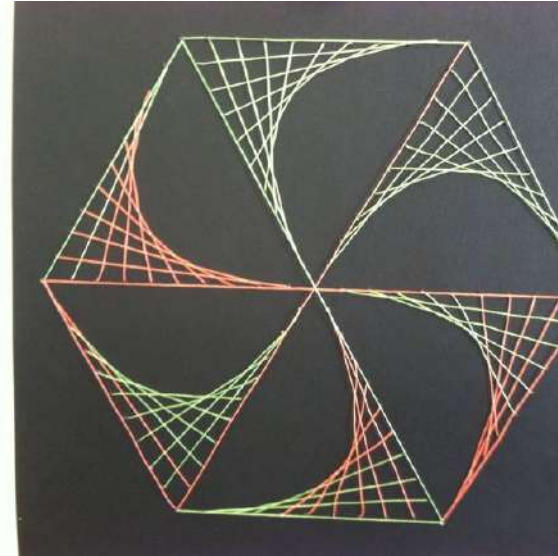




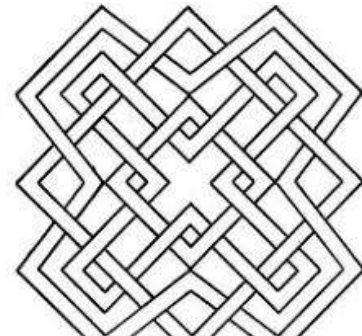
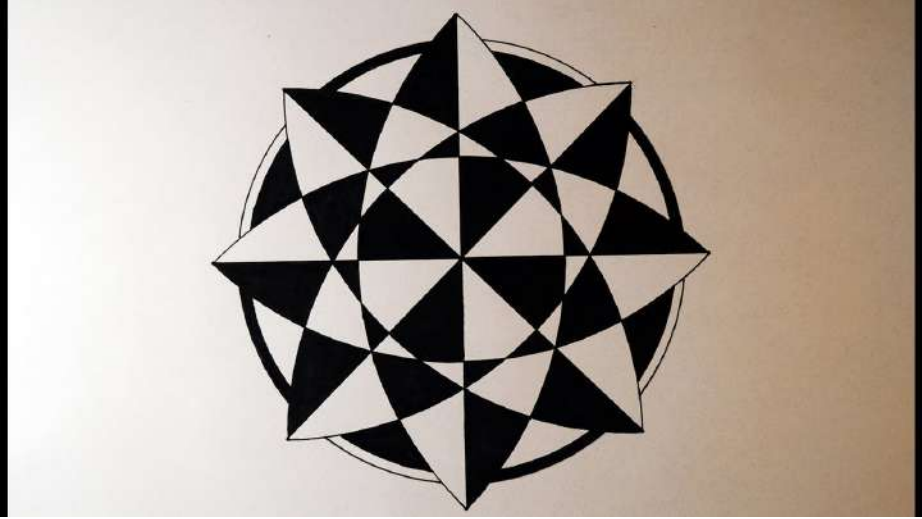
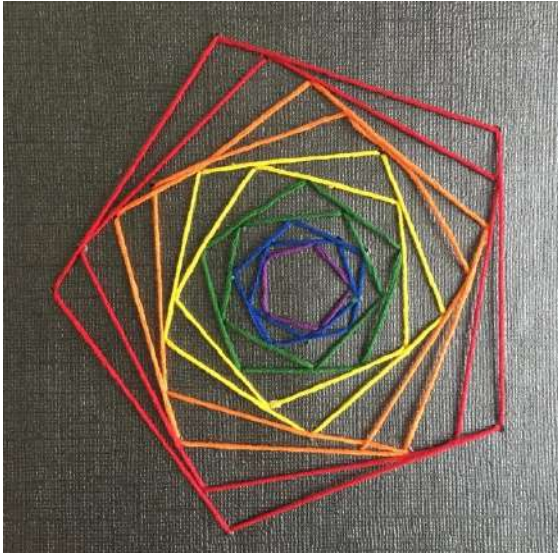
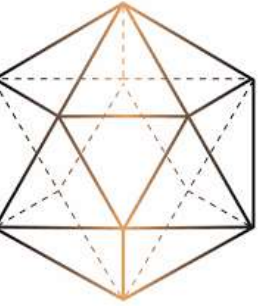
Geometric shapes & patterns



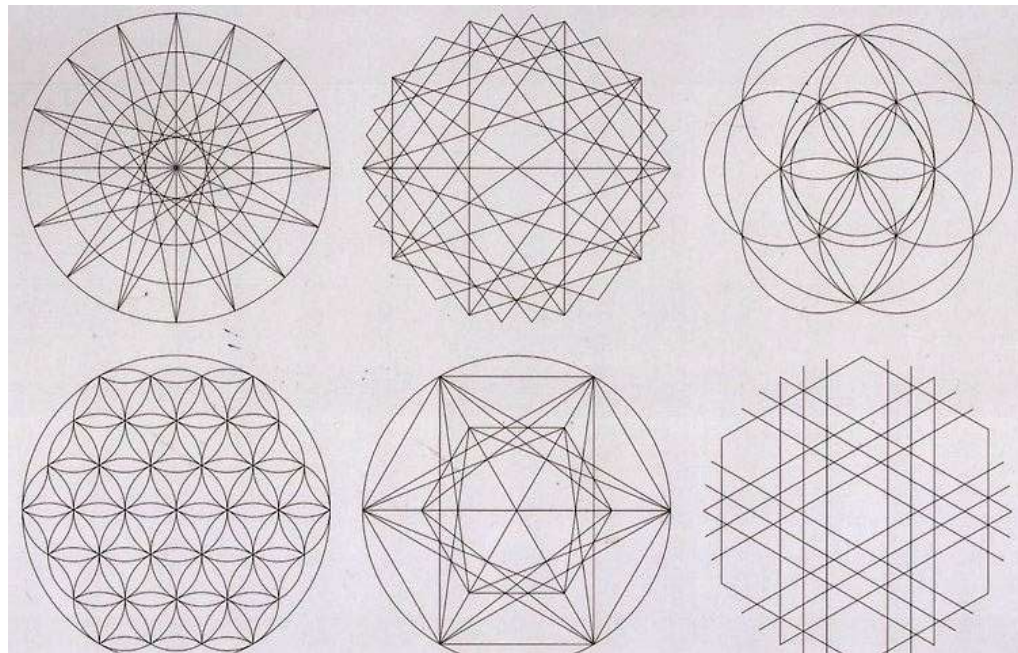
Geometric shapes & patterns

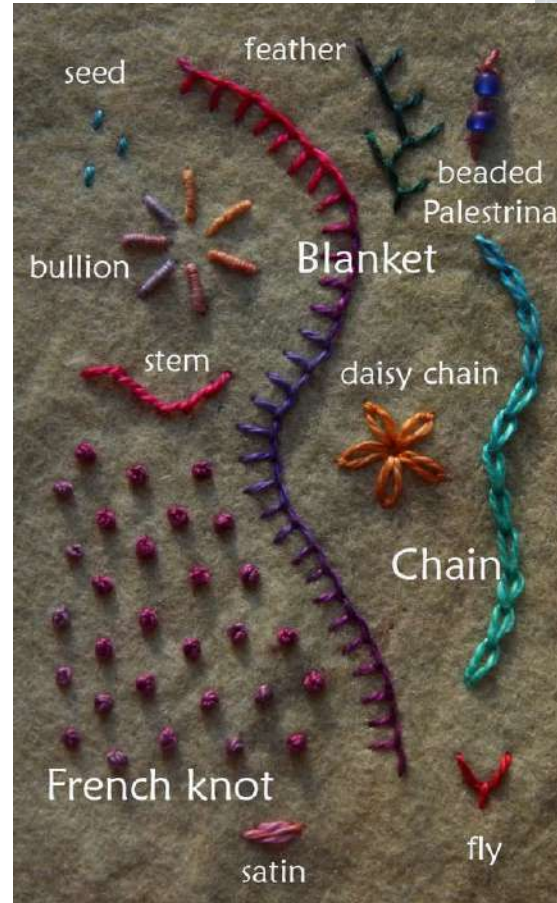
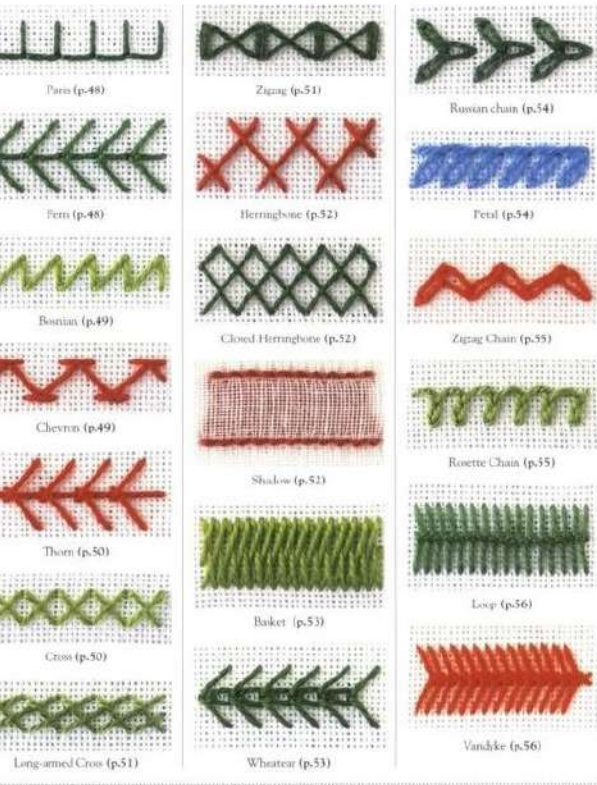


Geometric shapes & patterns



See more ideas [click link here](#)





Embroidery Stitch



EMBROIDERY STITCHES FOR BEGINNERS

ADVENTURES-IN-MAKING.COM



1. RUNNING STITCH



2. BACK STITCH



3. CROSS STITCH



4. THREADED
RUNNING STITCH



5. CHAIN STITCH



6. FERN STITCH



7. STAR STITCH



Backstitch



Running Stitch

Learn new
embroidery stitches
today!



French knots



Stem Stitch



Satin Stitch

Embroidery Stitch

<https://www.youtube.com/watch?v=kKnBUa4I2k4>

<https://www.youtube.com/watch?v=XXcXX-TD9IQ>

Pre plan

What is your Color scheme ?

What type of stitch Patterns are you using ?

Design * how will your thread interact with the photo?**

Requirements

- Embroidery should interact or look to be part of the photos
- You need a color scheme. Gradient, warm colors, cool colors, complementary colors, primary, monochromatic, neutral.....
 - 35% or more of your photo should be taken up by thread

Step one

Decide do you want a color or photo black and white?

Will it look better black in white with the thread in color?

Upload to the photograph to the
google classroom so Mrs.B can print it

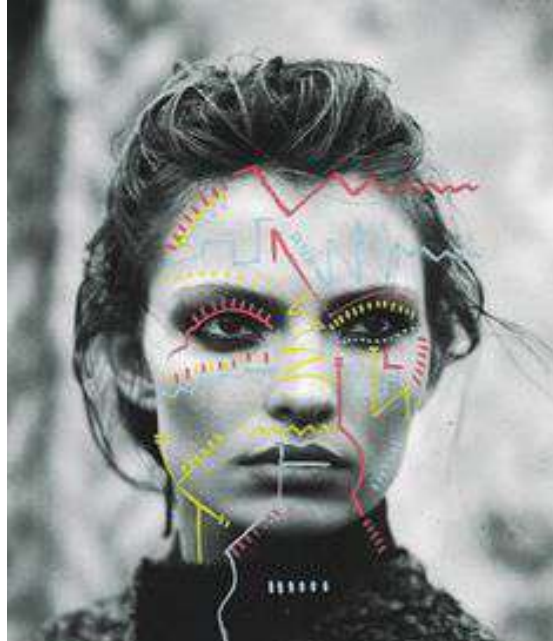
Step 2 Drafting

In photoshop

You will draft out your design

Your design has to be approved before you can start stitching
using the same colors & pattern your plan to actually use!!!

You will be required to do your draft design!



Step 3

Once your photo is printed

You will **pre poke holes** WITHOUT thread into the photo where you plan to stitch.

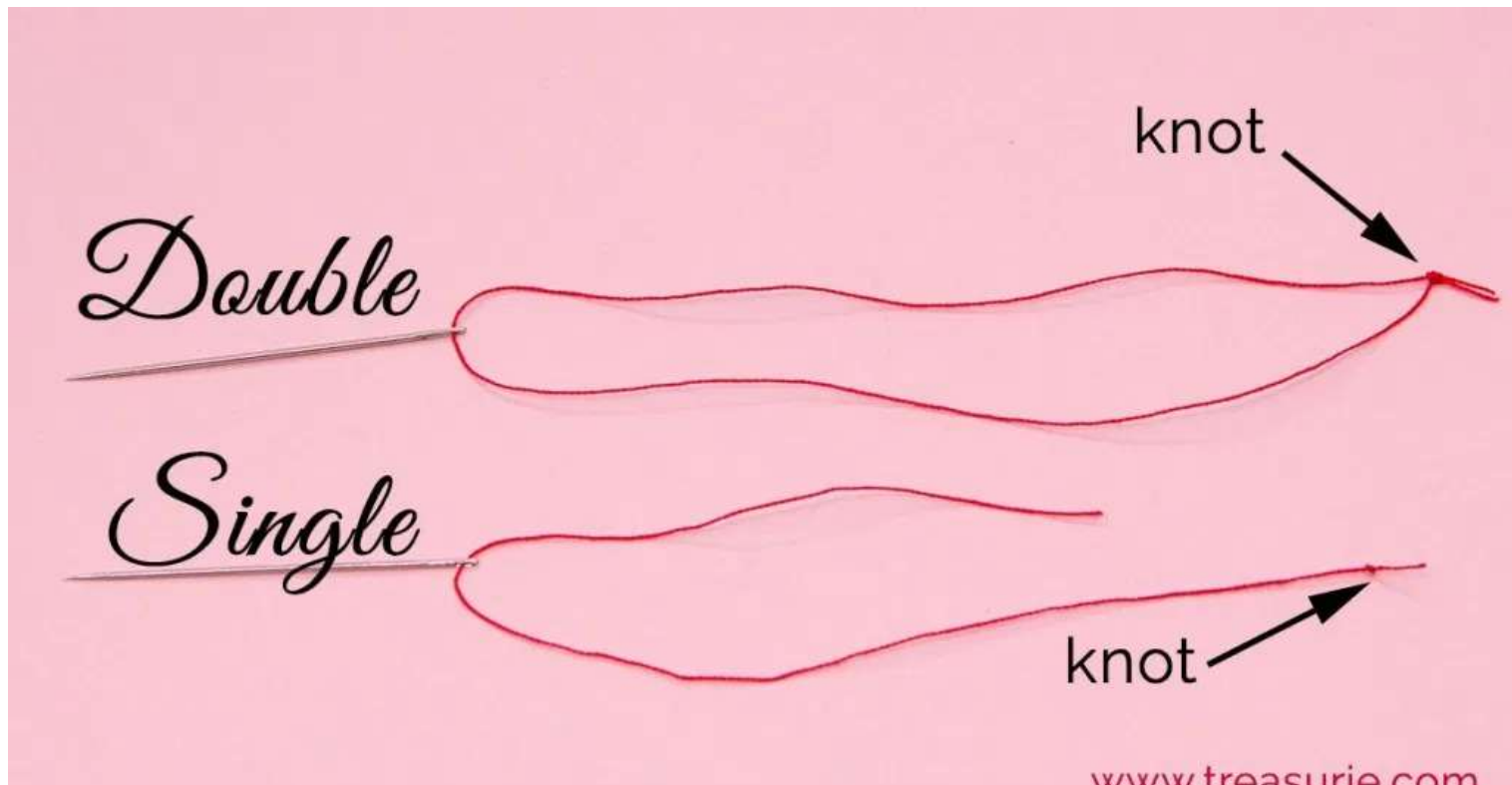
Use your draft image in photoshop to see where you need to put the holes

Use the styrofoam plate upside down to help push your needle through your photo.



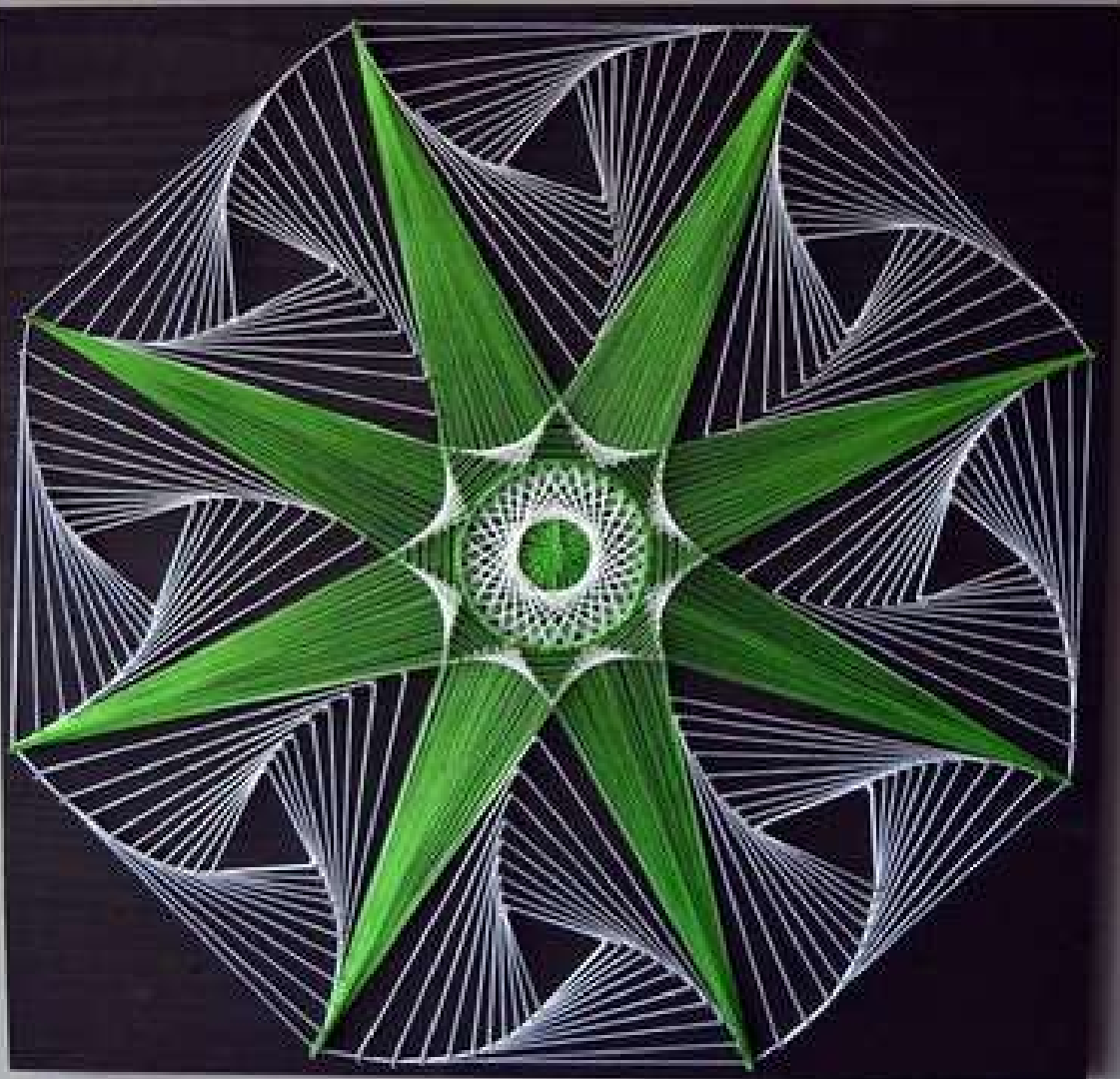
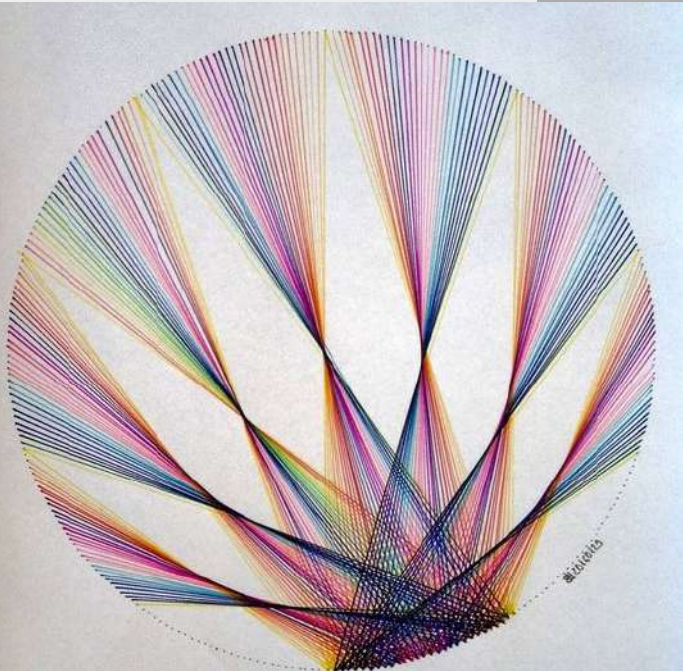
To have thicker line to be more visible, double the thread

Meaning have both ends of the thread wave through the photograph at one time.



Pay attention to the spacing

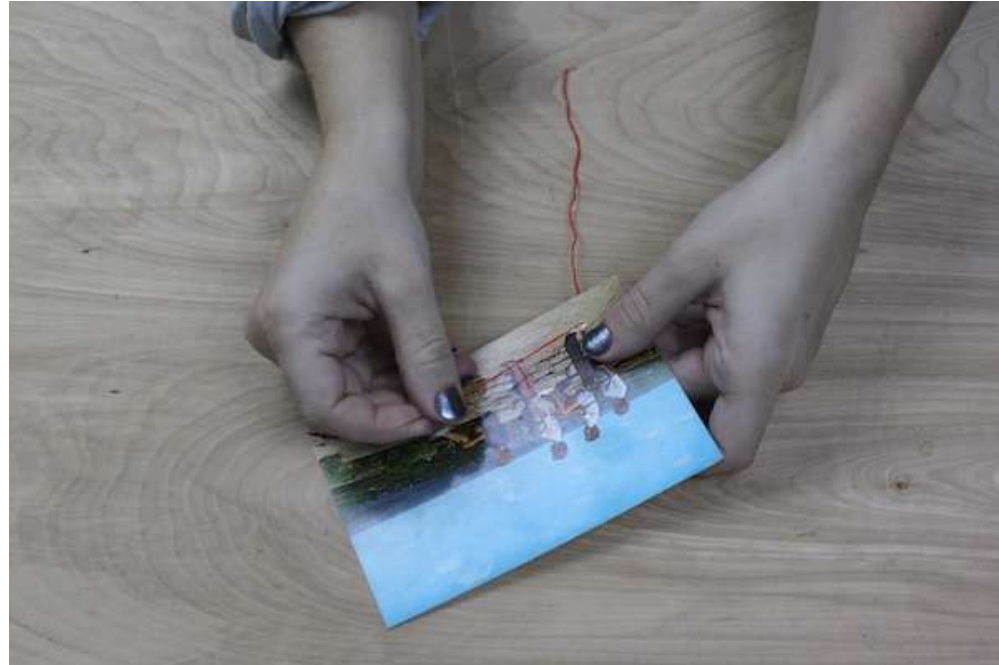
How far or close do you want
your thread



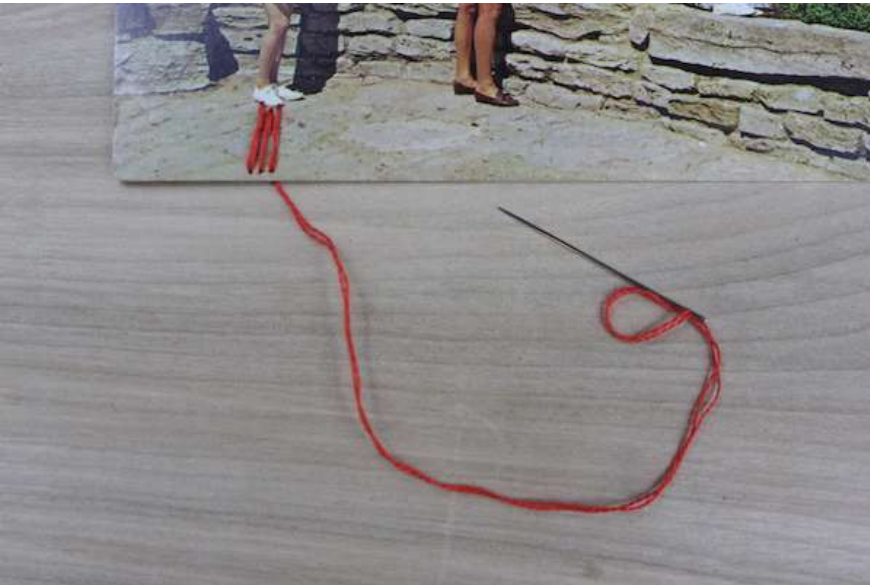
Thread the needle

Now start the from the bottom of the photo and push up through the image

Tape the end of the thread to the back of the photo



Once you are done with a color, tape that thread flat to the back and move on to the next color



DO NOT tangle the thread!

Take a few inches of the thread and NEATLY put back.

