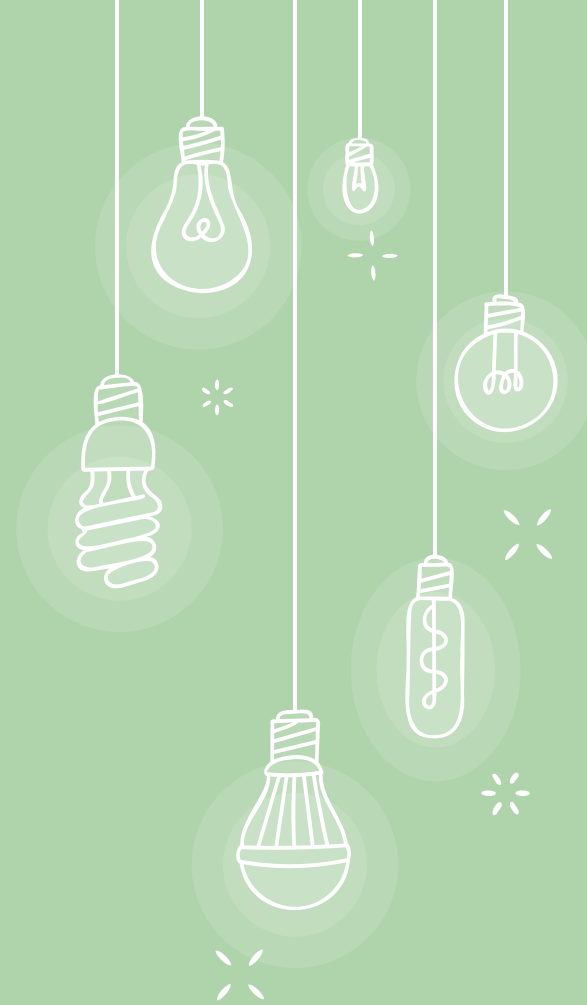




PHOTO CHALLENGE: 7 PORTRAIT LIGHTING

THE CHALLENGE:

Learn to use the different photo lighting techniques



LEARNING TARGETS:

- I can use the four common portrait lighting styles
- I can identify the four common portrait lighting styles



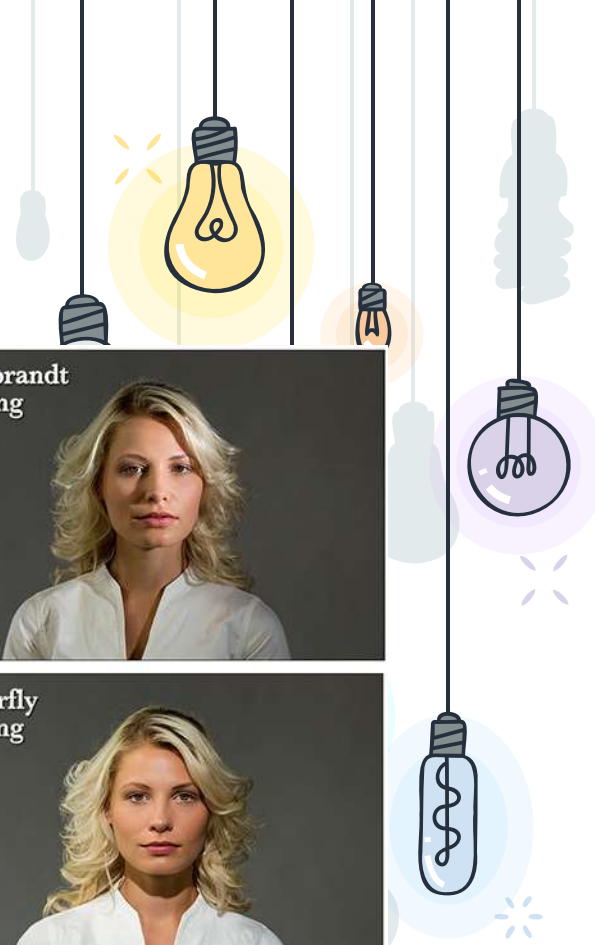


HOW DOES LIGHTING CHANGE A PORTRAIT?



THERE ARE FOUR COMMON PORTRAIT LIGHTING PATTERNS:

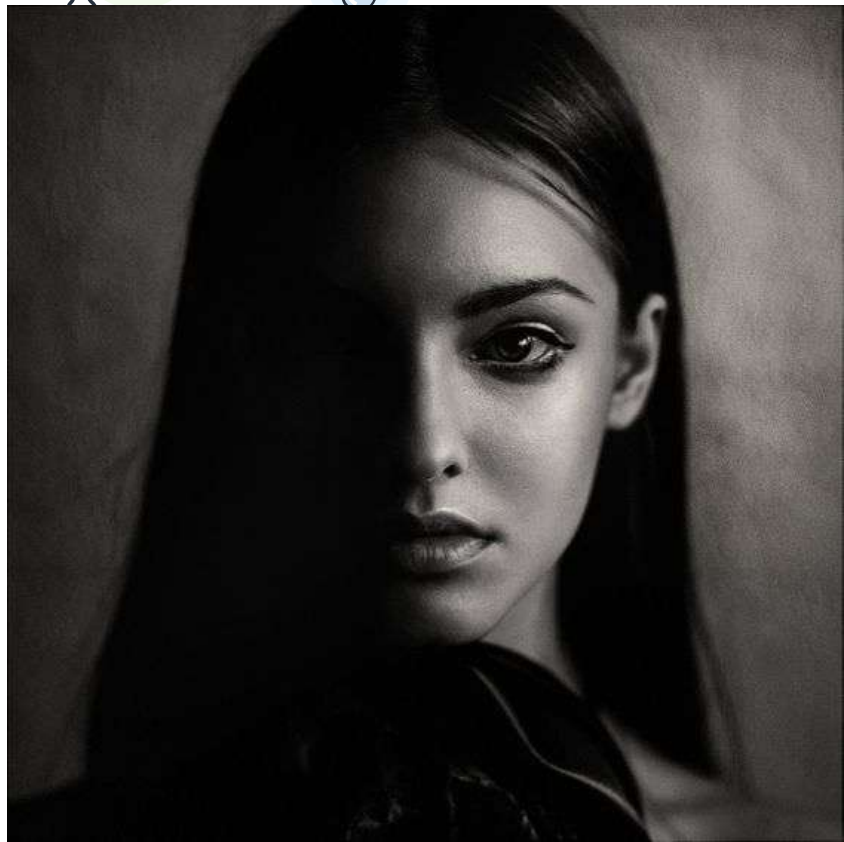
- + Split
- + Rembrandt
- + Loop
- + Butterfly





SPLIT LIGHTING

This setup lights up half of the face while keeping the other half shadowed. You “split” the lighting on your subject’s face. Your light source can be natural sunlight, or controlled studio light.





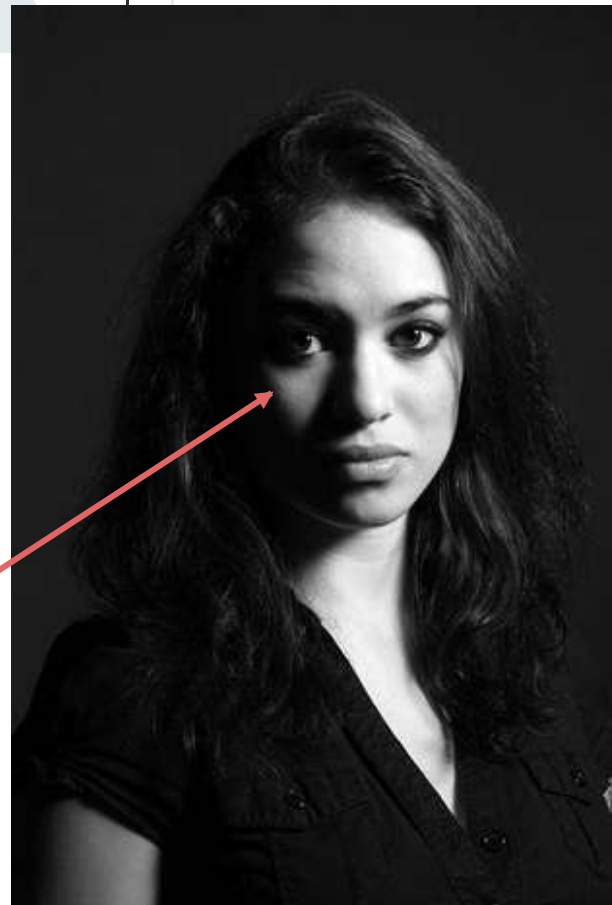
SET UP:

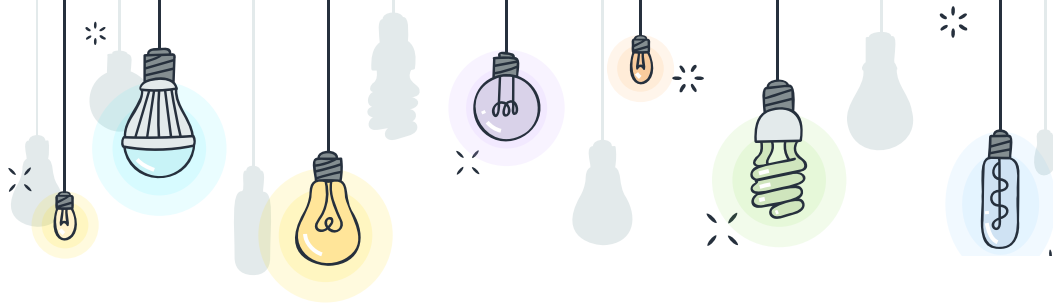
Place your light to the side of your subject so that it shines directly at his/her face. You want the light to be at a 90-degree angle to the direction your camera is facing. This can be either to the left or to the right of your model.



REMBRANDT LIGHTING

Rembrandt lighting gets its name from Rembrandt the painter, who often used this pattern of light in his paintings. Rembrandt lighting is identified by the triangle of light on the cheek.

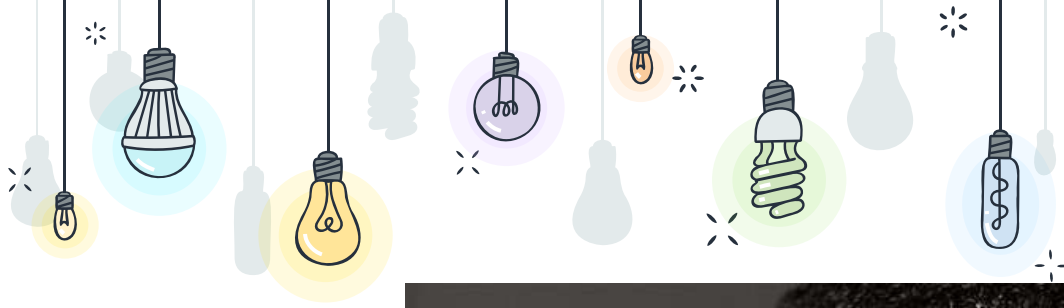




SET UP:

To create Rembrandt lighting, the subject must turn slightly away from the light. The light must be above the top of their head so that the shadow from their nose falls down towards the cheek.





LOOP LIGHTING

Loop lighting creates a small shadow of the subjects noses on their cheek.





SET UP:

To create loop lighting, the light source must be slightly higher than eye level and about 30-45 degrees from the camera.





BUTTERFLY LIGHTING

Butterfly lighting is named for the butterfly-shaped shadow that is created under the nose by placing the main light source above and directly behind the camera.

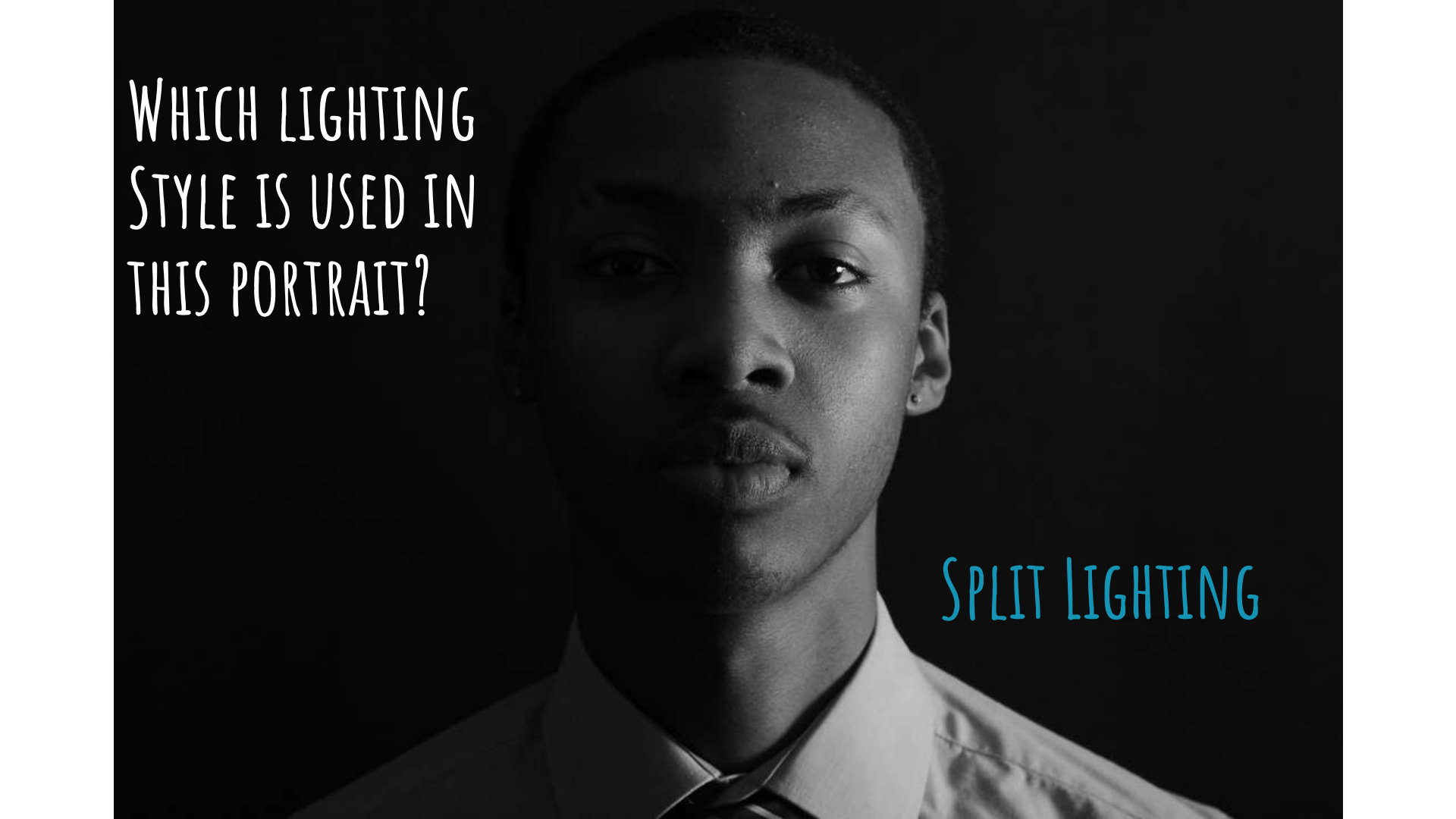




SET UP:

Butterfly lighting is created by having the light source directly behind the camera and slightly above eye or head level of the subject.





WHICH LIGHTING
STYLE IS USED IN
THIS PORTRAIT?

SPLIT LIGHTING



REMBRANDT
LIGHTING

LOOP LIGHTING





BUTTERFLY LIGHTING



DIRECTIONS:

- Work in pairs or small groups. Take at least five photos of each technique
- Choose your best photo from each technique to edit in Photoshop
- Edit your photos to black and white using an adjustment layer. You may also need to adjust your brightness/contrast
- Upload your 4 final photos to Google Classroom as JPEGs

SUGGESTED
CAMERA
SETTINGS:

