

QUICK REFERENCE GUIDE



Goal: Upgrade your Google Slides to make it more interactive, guide your students through your presentation, all while conducting a formative assessment.

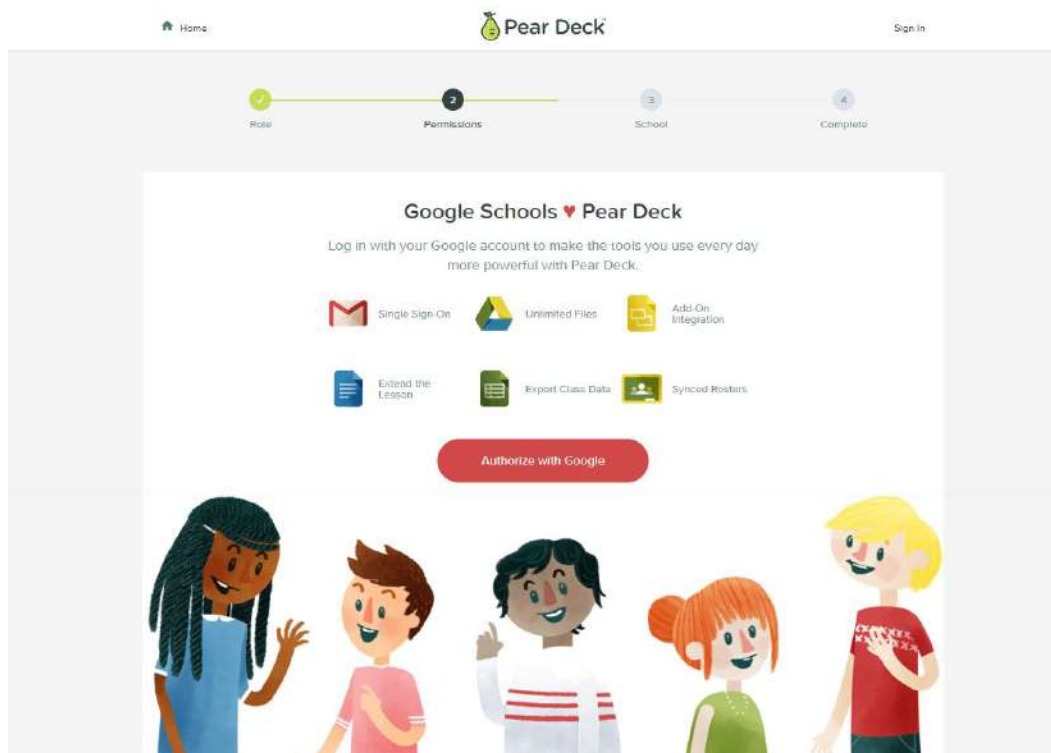
Login using your Google Account or Microsoft 365.

Pear Deck is an add-on to Google Slides. This means Slides have to be open. [Watch here.](#)

Launching Pear Deck:

Start with YOUR Google Slides	Start with a brand new presentation from Pear Deck
<ol style="list-style-type: none"> 1. Open the Google Slide presentation that you would like to update 2. Then choose Pear Deck in your Menu bar. 3. If Pear Deck does not appear in your menu- bar, go to Add-ons, Get Add-ons, search for it 	<ol style="list-style-type: none"> 1. Go to G Suite Marketplace 2. Find Pear Deck 3. Open the app 4. Choose your school Google Account 5. Sign Up 6. Choose Create a Lesson on your page

**If Pear Deck does not appear in your menu- bar, go to Add-ons, Get Add-ons, search for it*



Designing your Pear Deck

1. Choose *basic* & customize your own slides **OR** choose from ***Template Library***
 - 6 *Types of Questions* from “Ask Students a Question”
 1. *Text*
 2. *Multiple Choice*
 3. *Numbers*
 4. *Draw*
 5. *Draggable*
 6. *Website*

Lots of Templates in Template Library

1. Social Emotional
2. Social Studies
3. ELA
4. Science
5. Math
6. Beginning of Lesson, During, End

Modify Slides by the type of question

1. Be sure the slide is selected
2. Then choose Ask Students a Question
3. Choose the one you want
4. Double check in the notes area on the bottom of the slide
5. Modify the slide as needed

Presenting your Pear Deck Session

- *You will choose PRESENT on Pear Deck rather than the actual presentation.*
- *Wait for all students to join before presenting*
- *Use the link or the code (Code expires after 5 min, so best to use the link)*
- *Show /Hide Responses during the session*
- *Delete Responses via Dashboard*

Ending Your Session & Using Takeaways

- *Choose to save the session or not*
- *Name It using the Period*
- *It will appear in your Drive*
- *Send to students for reflection*
- *Go to your main page to view all sessions*
- *Takeaways can be found in your Google Drive*
- *Pear Deck automatically creates folders for you*

Other Advanced Features:

*Add **Audio** to your Pear Deck*

Other Pear Deck Integrations:

Weekly Wonders - AppSmash with Newsela Integration



- Use EDpuzzle video and answer questions without leaving your Pear Deck Session
- Play Kahoot on Pear Deck, create a Kahoot pertaining to your lesson and implement it.

Featured Pear Decks

- Be Internet Awesome
- Vocabulary

Watch How Pear Deck Works!

<https://www.youtube.com/watch?v=xliCN6mGZvM&feature=youtu.be>

5 Pear Deck Settings that you Need to turn on:

<https://app.peardeck.com/home/settings>

Past Sessions:

<https://app.peardeck.com/home/sessions>

Pear Deck's Blog:

<https://www.peardeck.com/blog>

<https://www.peardeck.com/learn-pear-deck>