

Dear 6th Grade Parents/Guardians,

August 21, 2020

Once again, welcome to the RFIS music program! Although your children may be beginning in our program under uncertain and unusual circumstances, we want to make clear how excited we are to get to know them and to share with them all the many benefits of musical involvement! First and foremost, participation in music programs sets your children up for a lifetime of joy and self-expression, not to mention all the benefits shown in the graphics on the right side of this page. (Thank you to the CMA Foundation.)

As we approach this new school year virtually, we wanted to keep you informed of a few things. **Yes, there will be INSTRUMENTAL LESSONS and CHORUS starting this September!** Please proceed to rent your child's instrument, lesson book and supplies by September 8. We are working hard to provide your child with the best possible experience, and we thank you in advance for your patience. We will be using the **same lesson book**.

#### ONLINE LEARNING:

All lessons will take place virtually. Once we acquire our class rosters, we will be reaching out to your child with his/her lesson schedule and **Google Classroom** information. This is where our lessons will take place.

#### RENTALS:

If you already have your instrument...great! If not, please rent it before school starts. I hope to see you at your first lesson with your instrument, lesson book and a pencil! You are welcome to rent from any store that you like, but we recommend renting an instrument versus buying.

Click [HERE](#) for Instrument Rental and Supply Info

Click [HERE](#) for the Instrument Supply List.

#### CHORUS Students:

In the virtual environment, chorus will not be what we are used to! I want all singers to know how much I am looking forward to getting to know them and simply enjoying music together! There are no special supplies required for chorus; just make sure to watch for my introductory communication so you can get signed into our Google Classroom. That is where we will stay in touch.

LOCAL BUSINESSES that we have used with success:

**Hunterdon Music Inc.** next to Rita's Ices and Lisa's Deli

11 State Route 12, Flemington, NJ 08822 908-782-0620

Click for Website: [HMI](#)

**K & S Music**

61 Industrial Rd, Berkeley Heights, NJ 908-790-0400 Ext. 20, ask for Ken

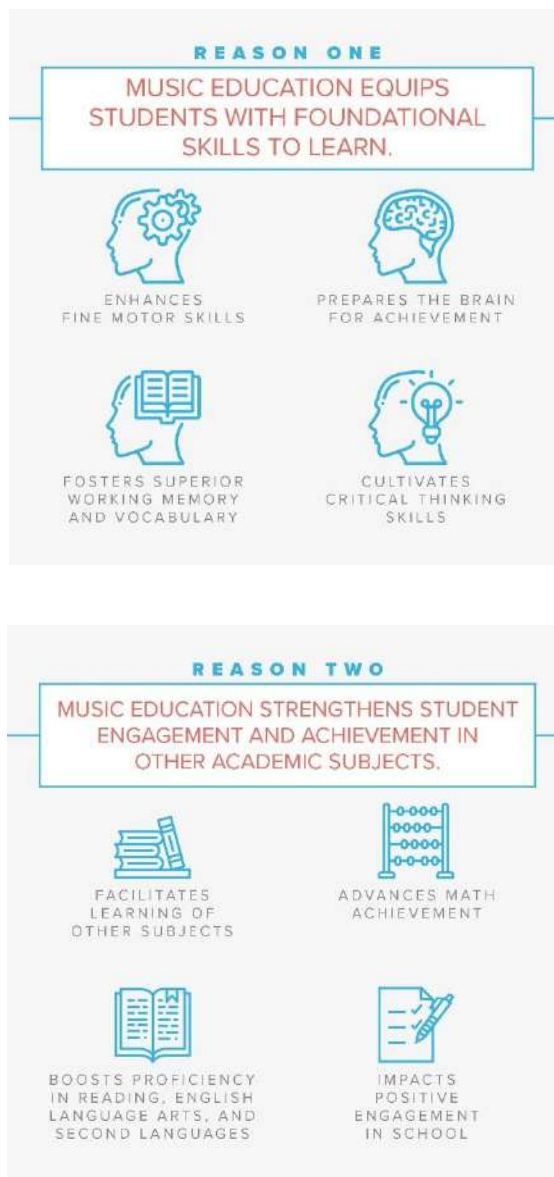
Click for Website: [K&S Instrument Rentals](#)

Flemington students use DISCOUNT CODE: 5915 for a 5 month rental, 5910 for a 10 month rental.

**Allstar Music Empire** Next to Shields Gymnastics

17 Minneakoning Rd., Flemington, NJ 908-788-9800

Click for Website: [Allstar Music](#)



### Things to consider when renting an instrument:

- Rent, don't buy. You can't beat the 4/5-mo introductory rate.
- At the store: Check the instrument before you leave the shop.
  - Is the store easily accessible?
  - Is there a repair plan with the rental?
  - Pick up all the necessary supplies (#2 ½ Reeds, Valve oil, Lesson Book, Swab, Rosin, etc.)
- We recommend you don't buy cheap instruments on the internet unless you have professional advice.
  - Remember there are no repair plans when you purchase online.
  - You can't exchange or return the instrument if needed.
  - Buying no name brands for a "low" price or novelty colored instruments often means frequent problems from the start (playing out of tune and mechanical problems) which make it very difficult for your child to play the instrument. We've seen it many times!



### Should I try to play before my first lesson?

This is probably not a good idea. Many instruments can be broken or damaged if not played or put together correctly. Please wait until your first lesson so your teacher can show you the correct way to assemble your instrument and produce a *quality* tone and embouchure. You wouldn't want to set up poor habits before you begin. 😊

**String instruments** need ongoing care, tuning, and adjustments that are typically covered under the instrument repair plans that come with most rentals. *A shoulder rest is necessary for violin and viola students. It ensures proper body and neck alignment. Hunterdon Music informed us that they are offering tuning support for string instruments that go out of tune.*

We will all do our best to help you with any questions to ensure a successful start of the year!

Sincerely,

Mrs. Audrey Spies (instrumental music, BAND)

Mrs. Susie Sullivan (instrumental music, ORCHESTRA)

Ms. Aileen Marsh (CHORAL music)

[aspies@frsd.k12.nj.us](mailto:aspies@frsd.k12.nj.us)

[ssullivan@frsd.k12.nj.us](mailto:ssullivan@frsd.k12.nj.us)

[amarsh@frsd.k12.nj.us](mailto:amarsh@frsd.k12.nj.us)