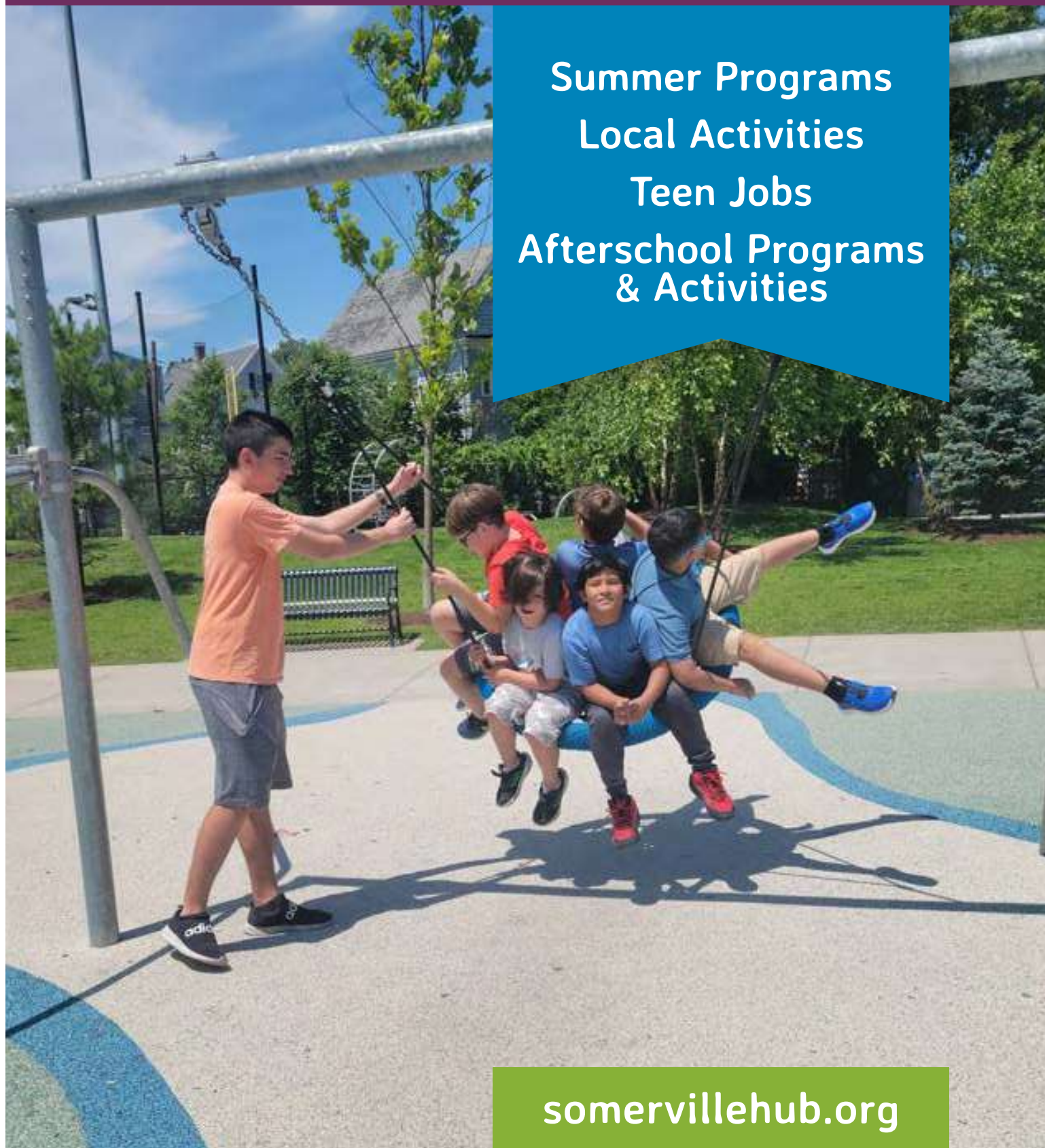


2023

Somerville Summer Guide

Summer Programs
Local Activities
Teen Jobs
Afterschool Programs
& Activities



somervillehub.org



Table of Contents

Summer Programs & Camps

- ▶ Full Day, All Summer Programs..... 1
- ▶ Full Day, Part Summer Programs ... 4
- ▶ Half Day, Summer Programs 8
- ▶ Overnight (Sleep-away) Camps..... 10
- ▶ Teen Programs & Jobs 11
- ▶ Local Summer Activities 13

School-year Programs

- ▶ Afterschool Programs 18

2023 Somerville Summer Guide

This 2023 Somerville Summer Guide to Camps and Activities, Out-of-School Time and Teen Jobs is designed by the SomerPromise Department of the City of Somerville to highlight local programs that offer affordable and accessible options to all Somerville families.

As well as the programs listed here, Somerville is home to various organizations offering specialized instruction in sports, visual and performing arts, and STEM.

If you are one these organizations, offer financial aid/sliding scale payment options, and would like be included in next year's directory, and/or be listed on the Somerville Hub, please contact

Madeleine Werner
mwerner@somervillema.gov



SomerPromise



Full Day

ALL SUMMER PROGRAMS

ARLINGTON BOYS & GIRLS CLUB SUMMER CAMP

abgclub.org



Ages: 2–17 years (structured camp, clinics and classes); 6–17 years (Club Kids drop-in)

Location: Spy Pond in Arlington, 60 Pond Lane

Contact: Jennifer Goodwin,
jgoodwin@abgclub.org

About: Wide variety of full day and half day options. Crafts, games, STEM, swimming, boating, outdoor adventures, field trips and more! A safe environment where kids can have fun and be themselves. Interesting, constructive activities that channel youthful energy into challenging pursuits.

ACERA SCHOOL SUMMER STEAM CAMP AT THE MASSACHUSETTS SCHOOL OF SCIENCE, CREATIVITY AND LEADERSHIP

aceraschool.org/summer-camps/
facebook.com/AceraSchoolMA

Ages: 4–17 years

Location: 5 Lowell Ave, Winchester

Contact: Kerry Crisey, Marketing Manager,
781-729-3428, summercamp@aceraschool.org

About: Challenging, fun STEAM learning, from coding and lab science to woodworking and art. Half-day and full-day programs available. We are looking forward to a great summer full of fun for the children of Somerville!

CITY EXPLORERS

teph.org



Ages: 5–13 years

Location: 277 Broadway, Somerville

Contact: Nita Doss,
jdoss@teph.org, 617-623-5510 x105

About: 8:30am–4:30pm. Somerville is our playground, awaiting new explorers. City Explorers allows youth to explore all things Somerville and beyond. From discovering hidden gems to touring as many

parks in Somerville as possible, with trips to the pool at Foss Park to cool down. And, of course, field trips every Friday. There will be a new theme every week, which includes social and emotional learning with educational yet fun activities. We provide transportation services for summer school students from Somerville Public Schools, Prospect Hill Academy, and St. Theresa of the Child Jesus School.

EVERWOOD DAY CAMP

everwooddaycamp.com



Ages: 5–13 years

Location: Everwood Day Camp in Sharon, MA

Contact: Nita Doss,
jdoss@teph.org, 617-623-5510 x105

About: 7:30am–5:30pm. Transportation provided from Elizabeth Peabody House to and from camp located in Sharon, MA daily. With over 60 different activities in categories such as adventure, nature, and science, creative and performing arts, sports, and aquatics, every day at Everwood Day Camp is different and sure to keep your child engaged and growing. Spaces are limited and are assigned based on availability for specific age and grade of students. Please contact Elizabeth Peabody House in the first instance for more information on spaces and enrollment process.

EMPOW STUDIOS STEM CAMPS

empow.me



Ages: 7–15 years, or Grades 2–8 years

Location: Boston, Cambridge, Lexington, Milton, Natick, Newton, Online

Contact: 617-395-7527, info@empow.me

About: Your child will have fun learning coding, robotics, digital design, Minecraft, engineering and more in one week camps. Experience the magic that has made us the most trusted STEM program provider in Massachusetts.



Low cost/
Financial aid available



Transportation
available

FRIENDS OF THE MIDDLESEX FELS FOREST CAMP

friendsofthefells.org



Ages: 4–12 years

Location: 489 Winthrop Street, Medford MA 02155 for camper drop off and pick up. Programming takes place in the Lawrence Woods section of the Fells.

Contact: forestcamp@fells.org

About: Fells Forest Camp offers week long, full and half day programming from June 26 - August 18. Full-day camp options 9am–4pm are available for our oldest and middle aged groups (Forest Explorers, 1st - 3rd Grade, and Forest Adventurers, ages 4th–7th grade).

GIRL SCOUTS OF EASTERN MASS

gsema.org



Ages: 5–17 years

Location: Camp Cedar Hill Waltham, MA Bus Stops available at Winter Hill Community School and West Somerville Neighborhood School. Financial Aid is available.

Contact: Cheryl Oliveira, coliveira@gsema.org

About: A hop, skip, and a jump from Boston, on 75 acres of natural beauty. Make memories and friends to last a lifetime. Try archery, swimming in our two pools, boating in the pond, high and low ropes challenge courses, and the alpine climbing tower. For campers entering grades K-12.



MYSTIC LEARNING CENTER SUMMER PROGRAM

mysticlearningcenter.org



Ages: 5–13 years

Location: 530 Mystic Ave, Somerville

Contact: Tracey Stearns,
info@mysticlearningcenter.org

About: A full day, summer long program including day trips to parks, beaches and local attractions, picnics, literacy, talent shows, club activities and much more. Includes breakfast, lunch and snacks.

PARTS AND CRAFTS CAMP

partsandcrafts.info



Ages: 7–13 years

Location: 561 Windsor St. Suite B402, Somerville

Contact: contact@partsandcrafts.org,
617-207-8016

About: Themed weeks of invention and creation. 9am–3pm, Mon to Fri with extended day available. Sliding scale and scholarships available.

PASSPORT SUMMER CAMP

cambridgemontessori.org



Ages: 18 months–11 years

Location: Cambridge Montessori School at
161 Garden St, Cambridge

Contact: passport@cambridgemontessori.org
617-308-9458

About: M–F 9am–4pm. Join us for a summer full of fun and games, nature adventures, swimming, specialized programs and more!

SOMERTIME DAY PROGRAM

somervilleec.com



Ages: 5–13 years

Location: West Somerville Neighborhood School

Contact: Ryan Chambers, 617-626-6600 x 2993
rchambers@somervillema.gov

About: All day camp with arts and crafts, sports, swimming, field trips and special events.



SOMERVILLE COMMUNITY SCHOOLS ADVENTURE SUMMER PROGRAM

somerville.k12.ma.us/afterschool



Ages: Entering K to entering 2nd Grade & entering 3rd to entering 9th Grade

Location: East Somerville Community School
50 Cross St, Somerville, MA

Location: Arthur D. Healey School
5 Meacham St, Somerville, MA

Contact: Hailie Andrade, 617 625-6600 x6970

About: Mon–Fri, 8am–4pm. Structured activities include outdoor play, visual and performing arts, wellness and cooking, world cultures, STEAM, technology, and physical education based on weekly themes. Local and out-of-town field trip two days per week. Hot Breakfast, lunch, and snacks provided.

SOMERVILLE MEDIA CENTER CREATOR CAMP

somervillemedia.org



Ages: 8–14 years

Location: 90 Union Square, Somerville

Contact: Evan Tingle, etingle@scatvsomerville.org

About: Creator Camp is a summertime workshop studio that focuses on giving young creators the communication skills to collaboratively create Stop-motion Animation, Short films, Podcasts, Comedy Skits, Songs, Live Shows, YouTube Channels and more! Every week will be full of surprises with unique themes and challenges each team will need to overcome together. Attendees work with creative team leaders to learn tricks of many trades, while building lasting relationships with other creators in their community! Full and partial scholarships available upon request.

STEVE & KATE'S CAMP

steveandkatescamp.com



Ages: 4–12 years

Location: Saint Theresa Catholic School

Contact: Tyler Rosati, 617-245-0410,
somerville@steveandkate.com

About: Lunch, snacks & all hours (8am–6pm) included. Steve & Kate's has put kids in charge of their own learning experience. Kids choose from a variety of activities in real-time, including sewing, coding, maker crafts, baking, sports, and more! Families can buy any number of days, to use at any time—no weekly reservations required. Or, buy a Summer Pass, which covers the whole season. Either way, any unused Passes are automatically refunded at summer's end.

TUFTS CENTER FOR ENGINEERING EDUCATION AND OUTREACH SUMMER PROGRAMS

universitycollege.tufts.edu/high-school/K-8



Ages: Entering 1st grade through 12th grade

Location: Tufts University, Medford, MA

Contact: precollege@tufts.edu

About: These week-long sessions will challenge students to solve problems using the engineering design process. Each week of workshops has a specific theme that explores different types of engineering, science, or programming skills in hands-on, open-ended program.



Low cost/
Financial aid available



Transportation
available

FULL DAY, All Summer Programs

Full Day

PART SUMMER PROGRAMS

BREAKTHROUGH GREATER BOSTON SOMERVILLE CAMPUS

breakthroughgreaterboston.org



Ages: SPS students apply for Breakthrough in 6th grade and start with us the summer before 7th grade.

Location: Somerville High School
81 Highland Ave, Somerville, MA 02143

Contact: Angela DiPesa, adipesa@btgbmail.org,
617-599-9828

About: FREE. Breakthrough Greater Boston (BTGB) is a year-round, tuition-free program that offers six years of academically intensive summer and after school programming to highly motivated, traditionally underserved middle and high school students in the Somerville Public Schools. BTGB's summer program is 6 weeks long (July 5th-August 11th) and the after-school program meets once a week from October to May.

BEYOND THE 4TH WALL THEATRE SUMMER CAMP

beyondthe4thwall.com/summer-camps/

Ages: 7–12 years

Location: The Morse School
40 Granite St, Cambridge, MA 02139

Contact: Jenna Moskowitz,
JennaM.bt4w@gmail.com

About: July 11–August 12, 9am–4pm. Through imaginative play, students will devise a piece of theatre to be performed at the end of the week. Elements of theatre such as playwriting, stage design, directing, acting and more come into play as we build our own unique show.

Cost: \$450 for one week, \$800 for 2 weeks, and \$1,100 for 3 weeks

THE CALCULUS PROJECT

thecalculusproject.org



Ages: Rising 7th–10th graders

Location: East Somerville Community School

Contact: Amber Jackson,
ajackson@k12.somerville.ma.us
Chad Mazza,
cmazza@k12.somerville.ma.us

About: July 5 – July 28; 9am–2:30pm. The mission of The Calculus Project is to use research-supported strategies to increase the representation and success of underrepresented populations in advanced mathematics. 75 students are served.

DEILAB RC RACING ACADEMY

deilab.com/racing-academy

Ages: Rising 4th–12th graders

Contact: info@deilab.com, 301-440-8445

About: Half day and full day weekly camps. DEILAB Radio Controlled Racing Academy is a hands-on program that provides in-depth exposure to the science and excitement of RC car racing. This program uses the excitement of racing to inspire and educate students about Science Technology Engineering Art and Math (STEAM). Students will race different types and sizes of RC cars on indoor and outdoor tracks. They will learn about the engineering and science of race cars from how they are designed, built and driven. Each student will get a full range of opportunities to drive, build, repair and race the cars. The program will culminate in a championship race day open to friends and family.

EAST END HOUSE: SUMMER FUN PROGRAM

eastendhouse.org

Ages: 5–11 years

Location: East Cambridge

Contact: jessica@eastendhouse.org, 617-876-4444

About: 7:30am–5:30pm. Campers participate in daily activities such as art, music, science, and sports; academic enrichment, weekly field trips, swimming, and 3 healthy meals daily.



EAST END HOUSE: MIDDLE SCHOOL SUMMER PROGRAM

Ages: Rising 6th–8th graders



Location: TBD

Contact: Marsé Romero, marse@eastendhouse.org

About: M–F 8am–5:30pm. This program runs for about 5-6 weeks. Campers will get to build community, gain new experiences, eat 3 meals a day along with snacks, participate in daily activities and clubs, weekly swimming, weekly field trips, and more. One-time \$50 enrollment fee.

ESH CIRCUS ARTS

eshcircusarts.com

Ages: 5–16 years

Location: 44 Park Street, Somerville

Contact: info@eshcircusarts.com

About: Summer programs at Esh Circus Arts offer kids and teens an opportunity to explore many aspects of the circus arts, including ground acrobatics, aerial acrobatics, tumbling, juggling, wire-walking, hula hooping and much, much more!

FRIENDS OF THE MIDDLESEX FELS SCIENCE AND DISCOVERY CAMP

friendsofthefells.org



Ages: 4–12 years

Location: 489 Winthrop Street, Medford MA 02155
Camper drop off and pick up is located at Medford High School and all of our camp programming takes place in the Lawrence Woods section of the Fells.

Contact: forestcamp@fells.org

About: Science and Discovery Camp, our newest offering, focuses on ecosystems, habitats, forest layers and pollinators. It is a two week long, full day program available in two age groups: 2nd - 4th grade and 5th-7th grade. All Full day programs run from 9am–4pm.

KESHER TSOFIM: SUMMER PROGRAMS

kesherschools.org

Ages: PK–Entering 5th grade

Location: 59 Cross St. Somerville, Ma

Contact: Kat Horion, kat@kesherschools.org

About: July 6th–August 11th. M–Th 9am–5pm, F 9am–2pm. We are home to a diverse and welcoming community of families and teachers. In a variety of Keshet programs, during the school year, from Pre-school through 5th Grade, children learn Jewish culture and Hebrew language as an organic part of each day's explorations, in a spirited, joy-filled environment. We focus on arts based learning and have access to a variety of art materials in specially designed studios, as well as a theater arts program every Wednesday!

MOE FENCING SUMMER CAMP

moefencingclub.com



Ages: 7–12 years

Location: 290 Broadway, Somerville

Contact: moefencinginfo@gmail.com, 617-301-0699

About: M–F 10am–3pm. This is a great experience for kids at the start of their competitive path or interested in exploring this dynamic and captivating Olympic sport! Drills, competitions & games designed to scaffold active learning, focus, teamwork & a healthy concept of competition. Early drop off and pick available for an additional fee if pre-arranged. Equipment and uniform is available for campers for no additional fee. Early Bird Fee: \$500 until July 1st. Fees will increase after that date. Hours: Here is the [LINK](#) to pre-register online.



Low cost/
Financial aid available



Transportation
available



PARKOUR & CLIMBING ADVENTURE DAY

bostonboulderingproject.com/youth

Ages: 5–12 years

Location: 12A Tyler St, Somerville

Dates: School Vacation weeks, holidays, Summer Vacation

Contact: laura.macdonald@boulderingproject.com

About: BBP summer adventure program runs every day 9am–3:30pm with extended day available. Rock-climbing, bouldering, team building, arts and crafts, and partnerships with local organizations such as Parkour Generations Boston.

PLUGGED IN SUMMER BAND CLASS

pluggedinband.org/summer-band-classes

Ages: 8–18 years

Location: 40 Freeman Place, Needham, MA 02492

Contact: Dan Croft, Program Director, dan@pluggedinband.org

About: All skills are welcome! Plugged In offers beginner, intermediate, and advanced band classes. Students are grouped into bands based on age, skill level, and preferred musical style. Bands choose songs and perform a set at the session-ending concert on August 5. Students will participate in Community Engage when they select a charity beneficiary for a session-ending concert.

SOMERVILLE ARTS COUNCIL MUSICAL THEATER PROGRAM

somerilleartscouncil.org/musical



Ages: 8–13 years

Location: Center for Arts at the Armory
191 Highland Ave, Somerville

Contact: 617-625-6600 ext 2985
youthsomerille@gmail.com

About: Full day, summer program focused on musical theater. Held at the Armory from July 5-7 and July 10-29 with shows on July 28 & 29, 9:00a.m.–4:30 p.m. Drop off begins at 8:30; pick up no later than 5:00p.m. This program will have four staff and a maximum of 40 youth.

SOMERVILLE YMCA: STEAMING AHEAD @ THE Y!

somerilleymca.org



Online registration only:

begins March 1, 2023 for the general public.

Ages: Entering grade 1 by September 2023–8th grade in Prospect Hill Schools

Location: 101 Highland Avenue, Somerville

Cost: \$250.00 per weekly session- EEC Vouchers and contracts accepted-Income eligible Financial assistance is available on a first come first served basis through an application process beginning in March 2023. Somerville Housing Authority Discounts available through SHA. Transportation provided to Mystic, Clarendon Hill Towers and North Street for families living in a SHA Complex only.

Contact: Francesca Ciccone, Registrar
fciccone@somerilleymca.org

About: June 26th-August 25th. M–F 7:45am–5:45pm. A Summer Program filled with Science, Technology, Engineering, Arts and Math Programming. Join us this summer for an adventure into the world of STEAM Programming. Field trips are scheduled for 2-3 days per week depending on the age of the child. Breakfast and hot lunch provided.



SOMERVILLE Y: PRE-K/K OST SUMMER PROGRAM

somerillymca.org



Ages: 4–6 year olds only. Children over the age of 6 should apply for the regular SACC Summer Program.

Location: 97 Highland Avenue, Somerville (next door to main Y building)

Contact: Francesca Ciccone, Registrar
fciccone@somerillymca.org

About: \$300 per week. EEC Vouchers and contracts accepted. Income eligible financial assistance is available on a first come first served basis through an application process beginning in March 2023. Online registration begins March 1, 2023

About: June 26th–August 25th. M–F 7:45am–5:45pm. A nine-week Summer Program filled with Science, Technology, Engineering, Arts and Math Programming. Join us this summer for an adventure into the world of STEAM Programming. Field trips are scheduled for 1–2 days per week. Breakfast and hot lunch provided.

SUMMER EXPLORE KINDERGARTEN & FIRST GRADE TRANSITION PROGRAM



somerilly.k12.ma.us/blog/preparing-kindergarten

Ages: 4–5 years, entering Kindergarten and 5–6 years, entering First Grade

Location: Capuano Early Childhood Center

Contact: Kathleen Bailer, 625-6600 x3656
kbailer@k12.somerilly.ma.us

About: FREE. The Summer Explore Kindergarten & First Grade Transition Program is a 4-week, tuition-free program that offers part and full day options for children entering Somerville Public School Kindergarten or First Grade in the fall of 2023. Enrollment is by referral only. This program serves children who benefit from an extended year to ensure kindergarten and first grade readiness. The program runs from July 10 –August 4 from either 8–1 or 8–4 and includes early literacy and math activities, water play, music and art, thematic projects, and social emotional learning opportunities. Free breakfast and lunch.

TUFTS UNIVERSITY

ase.tufts.edu/faculty/worklife/childcare/summerprograms

Ages: Varies by program

Location: Tufts–Medford/Somerville Campus

Contact: See individual programs

About: Offers a variety of programs for all ages including music, drama, literacy and engineering as well as high school/precollege programs.

THE WELCOME PROJECT

welcomeproject.org



Exploring Culture and Identity Summer Camp

Ages: 7–13 years

Location: 530 Mystic Ave, Somerville

Contact: Smirline Jacques,
smirline@welcomeproject.org

About: FREE. July 17–28. M–F 10am–3pm. Our summer programs bring together youth from immigrant families to explore their cultural backgrounds through art projects, field trips, storytelling and photography.



Low cost/
Financial aid available



Transportation
available

Half Day

SUMMER PROGRAMS

DAVIS SQUARE MARTIAL ARTS

davissquaremartialarts.com

Ages: 7–13 years

Location: 408 Highland Avenue, Somerville

Contact: dsma.office408@gmail.com

About: Beginner to black belt. One week kung fu programs that emphasize paying attention, doing your best, treating everyone with respect, and having fun. We work to create a positive environment where students can safely learn martial arts as well as improve their mental and physical well being.

FRIENDS OF THE MIDDLESEX FELLS SUMMER PROGRAM

friendsofthefells.org



Ages: 4–12 years

Location: 489 Winthrop Street, Medford MA
Camper drop off and pick up is located at Medford High School and all of our camp programming takes place in the Lawrence Woods section of the Fells.

Contact: forestcamp@fells.org

About: Fells Forest Camp offers week long, full and half day programming from. 3-hour long sessions are

offered in the morning and afternoon for our youngest and middle aged groups (Forest Kindergarten, ages 4-5 and Forest Explorers ages 1st - 3rd Grade). Morning sessions: 9am–2pm, Afternoon Sessions: 1pm–4pm. Programs with highly trained instructors provide nature-based learning opportunities for children to engage in a self-guided exploration of the forest, helping develop their curiosity, critical thinking, and sense of connection with nature.

KIDSTOP

somervillerec.com



Ages: 3–5 years

Location: TBA

Contact: Ryan Chambers, 617-625-6600 x 2993
rchambers@somervillema.gov

About: 9am–12pm. Starts July 6, 2020. Summer fun for younger kids, themed weeks with arts and crafts, daily activities and more! Register through the Somerville Parks and Recreation department.

GIRL SCOUTS OF EASTERN MASSACHUSETTS

hercamp.org



Ages: K–12th grade

Location: Various locations in MA and NH

Contact: Cheryl Oliveira, coliveira@gsema.org

About: A wide variety of fun overnight and family camps offering indoor and outdoor activities.



PARKOUR GENERATIONS BOSTON HALF DAY PROGRAMS

pkgenboston.com



Parkour Summer Clinics

Ages: 6–13 years

Location: Lincoln Park, Somerville High School,
other sites

Contact: 617-302-7542
boston.info@parkourgenerations.com

About: Half-day Parkour program. The perfect physical outlet for your child to learn to safely explore their environment while they build strength, improve coordination, and gain confidence!

SOCCER WITHOUT BORDERS FOR NEWCOMER YOUTH IN SOMERVILLE

soccerwithoutborders.org



Ages: 11–14 years

Location: Winter Hill Community School field

Contact: Bruno Contreras,
bruno@soccerwithoutborders.org

About: This free program will reach 50 students in the summer, specifically targeting students of Winter Hill. Summer program content will include soccer play and instructions, team building and cultural exchange, with a priority on elevating opportunities for youth to connect socially with their peers, providing a safe space to play supporting physical and mental health, and opportunities for youth to practice English in a lower stakes' environment than the classroom.

SUMMER MUSIC CAMP

somerville.k12.ma.us

Ages: Rising 3rd – 8th grade



Location: East Somerville Community School
50 Cross St, Somerville

Contact: Joanne Sadler,
jsadler@k12.somerville.ma.us

About: Two-week orchestra summer program. Classes include chamber music, improv, chorus, fiddle, technique, music theory, and orchestra rehearsals for woodwinds, brass, and string instruments. Beginners welcome. July 24-Aug 4 8:30am-12:30pm Concert: Friday 8/4, 10am. Breakfast and Lunch provided.



SUMMER SCHOOL OF HONK CAMP

schoolofhonk.org/summerhonk



Ages: entering grade 6 and up

Location: Somerville High School

Contact: Shaunalynn Duffy
schoolofhonk@gmail.com

About: July 17-28, 9am–12:15pm Program for band instruments and percussion: trumpet, clarinet, flute, saxophone, trombone, and drums. \$125/wk, with some scholarships available.

SUMMER TENNIS AND WRITING PROGRAM

coachdrewtennis.com



*Registration will take place on the
Somerville Parks and Recreation Website*

Ages: 7 - 15 years old

Location: Foss Park, Somerville, MA

Contact: coachdrewtennis@gmail.com

About: M-F from 9am–12pm. Students receive 2 hours of tennis and fitness programming, and 30-45 minutes of writing activities each day. The tennis and fitness aspect of the program is fun, fast paced, and engaging with a wide range of games and complete challenges as they work on their tennis skills. The writing side of the program is creative and fun as well including journaling and interesting writing prompts each day. In the past, kids have performed plays, done puppet shows, gone on scavenger hunts and more as part of this writing program. Over the course of each week, a strong sense of community and friendship builds among the students and staff as we work together to achieve goals, complete challenges, and have fun together.



Low cost/
Financial aid available



Transportation
available

Overnight

SLEEP-AWAY CAMPS

CAMP HAWKEYE

camphawkeye.com



Ages: 7–17 years

Location: New Hampshire
(Transportation Available)

Contact: Jessica, 781-315-1297
jess@camphawkeye.com

About: Camp Hawkeye is the un-traditional sleep-away camp for ALL HUMANS ages 7 - 17 with a commitment to creating a diverse community. 70 campers and 35 staff make Hawkeye perfect for first time campers of any age. Hawkeye includes campers and staff from a variety of social, ethnic, economic, religious, and geographic backgrounds as well as across the gender spectrum.

Hawkeye is different; with the feel of family and the healthy experience of the outdoors, Camp Hawkeye uses the joy and fun of camp to break down social and cultural prejudices, misconceptions and barriers.

GIRL SCOUTS OF EASTERN MASSACHUSETTS

hercamp.org



Ages: K–12th grade

Location: Various locations in MA and NH

Contact: Michelle Schofield,
mschofield@gsema.org

About: A wide variety of fun overnight and family camps offering indoor and outdoor activities.



CAMP KESEM

kesem.org/programs-services/camp-kesem



Ages: 6–18 years

Location: MIT to Camp Danbee

Contact: mit.outreach@campkesem.org

About: We serve children who have lost a parent to cancer, have a parent undergoing cancer treatment, or whose parent is a cancer survivor. We offer two separate weeks of fun, action-packed and 100% free-of-charge camp at Camp Danbee every summer as well as year-round support. Pickup and drop-off is at MIT's campus; transportation is provided from MIT to Camp Danbee. Our campers experience a warm and loving environment with other children who have similar life experiences and counselors who support them.

WILDWOOD - MASS AUDUBON

massaudubon.org/wildwood



Ages: 7–17 years

Location: Rindge, NH

Contact: wildwood@massaudubon.org,
603-899-5589 or 866-627-2267 (toll free)

About: Wildwood is a special place where campers come together to discover and explore the natural world. Our campers roast s'mores over open fires, sleep under the stars, sing silly songs, paddle around Hubbard Pond, and fall in love with nature each day. Campers have fun as they explore the outdoors, make friends, and develop self-confidence and leadership skills that last a lifetime. Located in southern New Hampshire, Wildwood is a one-of-a-kind camp for youth. 1- and 2-week overnight sessions, Teen Adventure trips, Family Camp

YMCA CAMP LAWRENCE (BOYS) CAMP NOKOMI (GIRLS)

camp.mvymca.org



Ages: 8–16 years

Location: Bear Island, Lake Winnepesaukee, NH

Contact: campinfo@mvymca.org

About: Two week sessions on beautiful Bear Island. Campers create their own schedule from a wide range of athletic, creative and instructional activities. Program areas include two natural beaches, multi-purpose playing fields, tennis courts, a craft shop, archery and riflery ranges, a primitive outpost, high and low element ropes courses, and a recreational lodge.



PROGRAMS FOR Teens

AI4ALL

bu.edu/lernet/AI4ALL/

Grades: current sophomores and juniors

Location: BU Campus in person

Contact: cab@bu.edu

About: July 24th to August 11th 2023 (M-F 9:30-3:30) Boston University is pleased to host AI4ALL, a program promoting greater diversity and inclusion in the field of Artificial Intelligence. Young women, or those who identify as female, currently in their sophomore or junior year of high school who live and attend school in MA are welcome to apply. During the 3-week program, participants will explore the field of AI through team projects, industry field trips, and presentations from guest speakers. The program will conclude with a small group research project and a presentation for friends and family. BU AI4ALL does not charge an application fee or tuition, however all students accepted into the program pay a \$100 non-refundable registration fee. Deadline for completed applications: May 1, 2023.

ENROOT

enrooteducation.org



Ages: Somerville High School immigrant Students

Location: Somerville High School

Contact: Teresa Martinez, Program Director, tmartinez@enrooteducation.org
617-383-1164

About: Enroot is an after-school program for immigrant students. By joining Enroot you become part of an amazing community: You will improve your English, get help with your college applications, get professional experience, and plan for your future. In Enroot, you can (1) participate in a professional internship, (2) attend bi-weekly leadership seminars, (3) meet with a mentor and 4. Most importantly you will be part of a community that cares and supports you during your high school year and beyond.

GEMSGETMATH@BU

sites.google.com/bu.edu/ggm

Grades: rising high school sophomores and juniors

Location: Boston University

Contact: jbala@bu.edu, mabeck@bu.edu

About: GeMsGetMath@BU, where GeMs = Gender Minorities in Mathematics, is a five-day, non-residential summer program for approximately 25 high schoolers of any gender who live in the greater Boston area. GGM@BU seeks to increase the gender diversity within mathematics and related STEM fields by building young students' confidence. This will be achieved by introducing them to a variety of topics, involving computation and experimentation, in a supporting and encouraging community consisting of peers, research mathematicians, and graduate students. We are particularly interested in applicants who are enthusiastic about mathematics and looking for more opportunities to explore it; students do not need to be already excelling at math.

MUSIC THAT MATTERS: SUMMER DAY CAMP

pluggedinband.org/summer-camp

Ages: 11–18 years

Location: 40 Freeman Place, Needham, MA

Contact: Dan Croft, Program Director, dan@pluggedinband.org

About: Music That Matters is an in-person summer day camp that includes band class, songwriting, recording a song and music video, workshops, offsite events, and performance opportunities. Each session ends with a benefit concert that raises money for a charitable organization chosen by the students themselves. An extended day is available. Students are grouped into bands by age, skill level, and musical interest.

PROMYS PATHWAYS SUMMER PROGRAM

promys.org

Ages: 14-18 years

Location: Boston University

Contact: promys@bu.edu

About: Dates: July 10 – August 4, 2023. PROMYS Pathways is a four-week day program at Boston University for mathematically inclined high school students (rising 9th graders–graduating seniors). PROMYS is particularly interested in providing mathematical enrichment for students from low-income backgrounds or underrepresented in STEM. Students commute to campus, work collaboratively on problem sets, and engage with a community of like-minded peers.

POPHEALTHEXPERIENCE



www.populationhealthexchange.org/learning-opportunities/pop-health-experience/

Ages: Rising 8th through 12th grade

Location: South Boston

Contact: phx@bu.edu



Low cost/
Financial aid available



Transportation
available

About: The PopHealthExperience offers rising 8th-12th graders an engaging and immersive introduction to the field of public health. Students learn from Boston University School of Public Health faculty and graduate students about a range of public health topics, participate in hands-on research activities, discover career choices, and develop leadership skills. There are a limited number of scholarships, apply here!

TEEN WRITING WORKSHOP @ MYSTIC LEARNING CENTER

6:00 – 8:00pm

Monthly on the first Wednesday

Location: Mystic Learning Center,
530 Mystic Ave #103, Somerville

Contact: booksofhopemlc@gmail.com
(registration required)

About: FREE. Youth writing workshop with guest artists and facilitators. Snacks provided.



Teen Jobs

GIRL SCOUTS OF EASTERN MASS CIT PROGRAM

gsema.org To Apply go to: bit.ly/gsemacamp

Ages: 16 and up by June 15th.

Location: Camp Cedar Hill Waltham, MA Bus Stops available at Winter Hill Community School and West Somerville Neighborhood School.

Contact: Cheryl Oliveira, coliveira@gsema.org

About: GSEMA camp jobs provide invaluable leadership experience. Free additional training available, such as lifeguarding, archery and first aid. Day Camp Salary starts at \$15.00, with additional money-earning opportunities available: Extended day, bus monitor, late night sessions etc.

GREEN TEAM

groundworksomerville.org/programs/green-team/

Ages: 14–18 enrolled in high school

Location: 138 South St., Somerville

Contact: Emily Reckard-Mota,
emily@groundworksomerville.org

About: The Green Team is a teen employment and leadership program. Green Team Members get paid to work on a team, grow food for our community, work for environmental justice, and learn how to be leaders in their community. The Green Team helps work towards Groundwork Somerville's mission of a cleaner, greener, healthier, and more equitable city.

MYSTIC MURAL PROJECT

somervilleartscouncil.org/mysticmural

Ages: 14–19 years

Location: Mystic Activity Center
530 Mystic Ave, Somerville

Contact: 617-625-6600 ext 2985,
gjenkins@somervillema.gov

About: Every year a diverse group of Somerville Youth come together to design and paint panels to add to the famous Mystic Mural Project. Part time approx. 20 hours per week for 6 weeks, paid. Now a part of the City summer jobs program; please apply there.

MAYORS SUMMER JOBS PROGRAM

somervillema.gov/departments/programs/mayors-summer-jobs-program

Ages: 15 years and up

Location: Citywide

Contact: summerjobs@somervillema.gov

About: The annual job program which pairs young job seekers with opportunities within City departments and with the Somerville Recreation Department. Paid work, average 20 hours per week.

PARKOUR & CLIMBING COACH-IN-TRAINING

pkgenboston.com

Ages: 14–18 years

Location: The Dojo, Somerville

Contact: boston.info@parkourgenerations.com
617-302-7542

About: Learn how to share parkour with younger generations, and pick up valuable professional skills in the process. An intensive week of on-site training and preparation followed by a flexible summer schedule assisting at our various programs in the area and participating in professional development activities with our team of experienced coaches and mentors.

TEEN EMPOWERMENT YOUTH ORGANIZERS

teenempowerment.org

Ages: High School Age

Location: 165 Broadway, Somerville

Contact: Danny McLaughlin,
danny@teenempowerment.org

About: Various programs hiring youth throughout the year that Prioritize issues in the community and work to plan and implement initiatives. Year round, Meet 4-5 times a week, \$15/hr



Activities

BEEN OUT HERE OPEN MIC

bohmlc.com/BOHMiC

When: Every Second Wednesday from 6pm–9pm

Location: 29 Properzi Way, Somerville

About: Presented in collaboration with Teen Empowerment, JYSEP Somerville, & Arts at the Armory

INTRODUCTION TO CANOE ON THE MYSTIC

somervillerec.com



Ages: 5–14 years

Location: Blessing of the Bay Boathouse

Contact: Yianny Tsirigotis, 617-625-6600 x 2994
jtsirigotis@somervillema.gov

About: Children learn the basic techniques of rowing and water safety. Morning and Afternoon Sessions Available.

SOMERVILLE BABE RUTH LEAGUE

somervillelittleleague.org



<https://somervillelittleleague.sportngin.com/register/form/753902128>

Ages: 4–15 years

Location: locations around Somerville

Contact: See website for info/registration.
For specific questions, Matt Desmond,
baseballsomerville@gmail.com

About: This level is for players that have graduated Little League, up to 15 years of age. It is typically made up of an intermediate and an advanced level. Events are at least three days a week from April* until mid-June.

COMMUNITY BOATING INC.

communityboating.org



Ages: 10–17 years (who can swim 50 yards)

Location: Boston Esplanade near MGH/footbridge

Contact: frontoffice@community-boating.org

About: Offers sailing, paddling, and windsurf lessons, STEM programs, games, and other activities to Greater Boston's youth. What better way to spend a summer than learning to sail and making new friends in the heart of the city? Need-based sliding fee as low as one dollar!

SOUTH ST. FARM FIELD TRIPS

groundworksomerville.org



Ages: K–12th grade students

Location: 138 South St., Somerville

Contact: Emily Reckard-Mota,
emily@groundworksomerville.org

About: We provide field trips for K-12th grade students that take place during the school year, after school and in the summer. We work with schools, after-school programs and centers, and other educational-related organizations. Join us for a 1-2 hr field trip at Somerville's only urban farm at \$10-15 per student.

THE GROWING CENTER

thegrowingcenter.org



Location: 22 Vinal Ave, Somerville

Contact: Lisa Brukilacchio,
lisa@thegrowingcenter.org

About: Check out our online calendar for free family friendly opportunities such as seasonal celebrations, open garden hours, music, theater, Pajama Storytime, Stuffed Animal Campout, Gathering of the Fairies and more.



Low cost/
Financial aid available



Transportation
available

LITTLE LEAGUE

somerlilleleague.org



<https://somerlilleleague.org/register/form/753902128>

Ages: 4–15 years

Location: locations around Somerville

Contact: See website for info/registration.
For specific questions, Matt Desmond,
baseballsomerlille@gmail.com

About: This level is broken up into four Divisions based on age and skill. The assignment of players will be determined by the Somerville Little League Board of Directors.

A Division: This is an advanced introduction to baseball typically for 6 and 7 year-old kids. Events are usually held twice a week from April* to early June.

AA Division: This is a bridge division for kids who are starting to get comfortable playing baseball. Hitting will be primarily against an automated pitching machine. It is intended for “advanced” 6 and 7 year-olds as well as 8 year-olds who have played some baseball in the past. Events are usually three days a week from April* to early June.

AAA Division: This division is the traditional “minors” league typically made up of kids between the ages of 8 and 11. Events are at least three days a week from April* until mid-June.

Majors: This division is typically made up of advanced 10 year-olds as well as 11 and 12 year-olds (born before September 1, 2011). Events are at least three days a week from April* until mid-June.

MYSTIC LEARNING CENTER BASKETBALL LEAGUE

mysticlearningcenter.org



Ages: 8–18 years

Location: 530 Mystic Ave, Somerville

Contact: Tracey Stearns,
info@mysticlearningcenter.org

About: A six week summer program from mid-June through early August on Tuesday and Thursday evenings from 6pm–8pm.

OPENAIR CIRCUS

openaircircus.org



Ages: 6 years and up (most classes for age 6+)

Location: parks in Somerville
(particular parks for 2023 TBC)

Contact: Peter Jehlen, 617-947-1191,
peter_jehlen@openaircircus.org

About: Learn a wide variety of circus related (and unrelated) skills for 1 hour late afternoon/early evening classes for children 6 years-adulthood. Summer program is free (requested donation is \$30/child) and runs 6 weeks from the end of June through the beginning of August. Season ends with class performances where students show off what they’ve learned.

PARKOUR CLASSES

pkgenboston.com

Ages: 6–13 years

Location: Somerville Armory, Boston,
Pilfering Project, outdoor parks

Contact: boston.info@parkourgenerations.com
617-302-7542

About: Join our weekly evening and weekend classes throughout Somerville for kids (and adults) to stay active all summer long. For all abilities and fitness levels, drop-in, full-season, and monthly membership sign up options available!

SPROUT SPORTS

Ages: 3–5 years



Location: West Somerville Neighborhood School

Contact: Ryan Chambers, 617-625-6600 x 2993
rchambers@somerlillema.gov

About: Children learn the fundamentals of sports with Somerville Parks & Recreation Staff with an emphasis on developing motor skills and having fun before they get into organized sports. Children will learn the basics of soccer, basketball, baseball, football, and hockey.



SOMERVILLE PARKS AND REC BASEBALL/SOFTBALL CLINIC



Ages: 5–16 years

Location: Dibloy Auxiliary Field

Contact: Marco Osoy, mosoy@somervillema.gov,
617-625-6600 x 2990

About: June 26 – June 30th This clinic gives youth the opportunity to perfect their fundamental skills in throwing, hitting and fielding.

SOMERVILLE PARKS AND REC ULTIMATE FRISBEE CLINIC



Ages: 7–13 years

Location: Trum Field

Contact: Marco Osoy, mosoy@somervillema.gov,
617-625-6600 x 2990

About: July 10th – 14th Led by SHS Ultimate Frisbee coaches and players, children will participate in drills and scrimmages designed to help them learn the skills and rules of ultimate frisbee.

SOMERVILLE PARKS AND REC TENNIS CLINIC SESSIONS



Ages: 7–14 years

Location: Dilboy Tennis Courts

Contact: Marco Osoy, mosoy@somervillema.gov,
617-625-6600 x 2990

About: July 10th – 14th & July 17th – 21st This program will focus on the fundamentals of tennis, including serving, backhand and forehand.

SOMERVILLE PARKS AND REC GOLF CLINIC



Ages: 7–10 and 11 –14 years

Location: Dilboy Auxiliary Field

Contact: Marco Osoy, mosoy@somervillema.gov,
617-625-6600 x 2990

About: July 17th – 21st Participants will learn the fundamentals of golf. Everyone will have fun while learning grip, stance, setup, swing, and much more. Will travel to the golf course for tee time. Golf clubs will be provided if students need them.

SOMERVILLE PARKS AND REC TRACK AND FIELD CLINIC



Ages: 7–14 years

Location: Dilboy Stadium

Contact: Marco Osoy, mosoy@somervillema.gov,
617-625-6600 x 2990

About: This program under the supervision of the SHS track coach, as well as SHS track athletes will teach participants the basics of track and field elements.

SOMERVILLE PARKS AND REC SOCCER CLINIC



Ages: 5–14 years

Location: Dilboy Stadium

Contact: Marco Osoy, mosoy@somervillema.gov,
617-625-6600 x 2990

About: July 31st – August 4th This program will provide a positive soccer experience for all youth in our community. Somerville Parks and Recreation staff will focus on fundamentals of soccer such as ball work, passing, and shooting.

SOMERVILLE PARKS AND REC BASKETBALL CLINIC



Ages: 5–14 years

Location: Trum Field

Contact: Marco Osoy, mosoy@somervillema.gov,
617-625-6600 x 2990

About: August 7th – 11th Under the direction of SHS coaches and players, this clinic teaches youth the basic fundamentals of basketball such as dribbling, passing, and shooting.

SOMERVILLE PARKS AND REC LACROSSE CLINIC



Ages: 7–10 years

Location: Dilboy Auxiliary

Contact: Marco Osoy, mosoy@somervillema.gov,
617-625-6600 x 2990

About: Fundamental skills such as catching, throwing, and cradling will be taught in this introduction program. Equipment will be provided.



Low cost/
Financial aid available



Transportation
available

SOMERVILLE PARKS AND REC VOLLEYBALL CLINIC



Ages: 13–18 years

Location: TBA

Contact: Marco Osoy, mosoy@somervillema.gov, 617-625-6600 x 2990

About: This program will focus on the fundamentals of volleyball such as serving, blocking and team building.

SOMERVILLE PARKS AND REC SPEED AND CONDITIONING PROGRAM



Location: Nunziato Park

Ages: 12–18 years

Contact: Marco Osoy, mosoy@somervillema.gov, 617-625-6600 x 2990

About: This program will help prepare athletes for the upcoming fall season. This program will focus on aerobic and anaerobic exercises.

SOMERVILLE PARKS AND REC LAWN GAMES PROGRAM



Location: Nunziato Park

Ages: 8–17 years

Contact: Mak Fenton, mfenton@somervillema.gov, 617-625-6600 x 2992

About: Youth lawn games is an exciting program that will allow participants to play in an array of lawn games including bocce ball, cornhole, ladder toss, ball slam, and saucer slam. A different game will be played each week with a focus on learning the rules and enjoying the games in a fun and non-competitive format. This program provides a great opportunity for participants to get out and socialize with your peers while enjoying lawn games!

SOMERVILLE PARKS AND RECREATION GOALIE CLINIC



Location: Dilboy Stadium

Ages: 10–18 years

Contact: Marco Osoy, mosoy@somervillema.gov, 617-625-6600 x 2990

SOMERVILLE ROAD RUNNERS



srr.org/srr-kids

Ages: Entering K–5th grade

Contact: kids@srr.org

About: FREE. SRR Kids is a free running program for Somerville kids in grades K-5. We aim to get kids out and the track and teach them all there is to love about running. We meet weekly on Wednesday evenings in the fall and spring. Each session runs for 8 practices. The program culminates in a free 5k race and pizza party. This is not a drop-off program, each child must have an adult on premises.

TEE BALL



somervillelittleleague.org

<https://somervillelittleleague.sportngin.com/register/form/753902128>

Ages: 4–15 years

Location: locations around Somerville

Contact: See website for info/registration. For specific questions, Matt Desmond, baseballsomerville@gmail.com

Available to all children of all skill levels who want to play baseball. Scholarships Available All kids play, regardless of ability to pay

About: This level is free and is an introduction to baseball for 4 and 6 year-olds who have never played before. Events are held once a week on Saturday mornings from April* to early June.

SOMERVILLE YOUTH SOCCER



somervillesoccer.org

Ages: 2–18 years

Location: Locations throughout Somerville (and surrounding towns for travel teams)

Contact: Jim Seavey, Executive Director, executivedirector@somervillesoccer.org 617-684-5737

About: A recreational and developmental soccer league for children ages 2 to 18. In-town and travel leagues offered. Non-profit and volunteer run youth sports organization





PARKS PROGRAM

sommerville.com



Ages: 5–16 years

Location: Argenziano Playground

Contact: Mak Fenton, mfenton@somervillema.gov, 617-625-6600 x2992

About: FREE. M–F 9am–12pm. Activities include a variety of games, contests, daily arts and crafts projects, board games and much more! Fridays will be a special event day! Lunch is served daily.

SOMERVILLENS POP WARNER AND CHEER

facebook.com/somervillepopwarner



Ages: 5–14 years

Location: varies by program

Contact: Roger Desrochers 617-838-2145, rogspw@aol.com

About: Football/cheerleading non-profit. Certified coaches work with all kids to learn the sport as well as important life lessons. Practice 2.5 hrs, 3 to 4 nights/week. Games on Sundays.

SCIENCE CLUB FOR GIRLS

scienceclubforgirls.org/programs

Ages: rising 6th–rising 9th grade

Location: Cambridge/ Somerville

Contact: Cristina Ullmann, scfgprograms@scienceclubforgirls.org

About: Our programs are designed as “clubs” to reinforce collaboration and teamwork, as these methods have been shown to greatly enhance girls’ learning. To help build both skills and confidence, curriculum and club structures are designed to be inquiry-driven — activities are hands on, rather than demonstration style — with opportunities to experiment, to fail in safe and supportive settings, and to be resourceful and persistent. Science Club for Girls programs are organized by age/grade level.



Low cost/
Financial aid available



Transportation
available

Afterschool

SCHOOL-YEAR PROGRAMS

VOICES WITH VISION: DUB THIS GAME

Ages: 10–13 years

Location: Healey School

Contact: Desireé Vaughn,
dubthisgame@gmail.com

About: Voices with Vision is an empowerment program for Black and LatinX girls in grades 5 to 8 that teaches about the importance of knowing and encouraging yourself by building self-esteem and self confidence. Our aim is to empower girls in our program to “lift as they climb”, encouraging and supporting one another through the art of stepping (learning techniques, movements and a routine). Their stepping together will encourage them to try new things, take risks and persist when facing challenges.

DEILAB DESIGN, BUILD AND INNOVATE WITH LEGO!

deilab.com/lego-innovation

Ages: Pre-K–5th grade

Contact: Aron Lee, 301-440-8445
alee@deilab.com

About: Students will build creative and motorized projects from race cars, sky-scrapers, battle bots, art projects and more for games, challenges and competitions in this STEAM (Science, Technology, Engineering, Art and Math) innovation program. This hands-on program focuses on rapid prototyping, testing and creativity, while enhancing curiosity and ingenuity. DEILAB uses Toys as Tools to Teach. Each day there are two one-hour sessions (3-4pm & 4-5pm) with 15–25 students. West Somerville on Monday, Argenziano on Tuesday, East Somerville on Wednesday, Argenziano on Thursday, Kennedy on Friday.

EAST END HOUSE: MIDDLE SCHOOL AFTERSCHOOL PROGRAM

Grades: 6th – 8th

Location: 100 Putnam Avenue, Cambridge MA

About: FREE. M–F 3pm–6pm. This program focuses



on academics, social emotional learning, building community, gaining new experiences, and more. Students are offered snacks at the beginning of the program and a meal at the end of the program.

Contact: Marsé Romero marse@eastendhouse.org

ELIZABETH PEABODY HOUSE AFTERSCHOOL

teph.org/school-age-interest



Ages: 5–13 years

Location: 277 Broadway, Somerville

Contact: Nita Doss, jdoss@teph.org
617-623-5510 x105

About: 2:30pm–5:30pm M–F, 12pm–5:30pm Wednesday. Our afterschool program consists of a variety of activities that fall under the scope of STEM, social/emotional support, movement, media, and art. We provide your child with a wide range of programming opportunities. Join us this school year as we explore the deep depths of space, habitats on Earth, solve mysteries, learn about the environment, and how we can help our community!

EL SISTEMA SOMERVILLE AFTERSCHOOL MUSIC PROGRAM

Ages: 3–8th graders



Location: East Somerville Community School
50 Cross Street, Somerville

Contact: Director Evan Perry, 617-625-6600 x3716
eperry@k12.somerville.ma.us

About: M–F, 2:30pm–5:30PM (Including early release Wednesdays). Each student will receive 2 daily music



classes, 1 daily homework session and weekly specific and individualized schedule. Cost: \$145/week; \$29/day. Financial assistance on a sliding scale is available for families who qualify. For information regarding the documents needed for financial aid consideration, please contact the El Sistema Director.

GROUNDWORK SOMERVILLE DURING SCHOOL GARDEN PROGRAMMING

groundworksomerville.org/programs/school-yard-gardens-program/

Ages: K–8

Location: Somerville Public School District

Contact: Juliana Soltys,
juliana@groundworksomerville.org

About: Groundwork Somerville partners with the Somerville Public School District to provide garden & nature based lessons in every school garden. Students learn to plant, weed, and harvest, in practical, hands-on lessons that connect traditional subjects to fun, creative activities!

GROUNDWORK SOMERVILLE AFTER SCHOOL GARDEN PROGRAMMING

groundworksomerville.org/programs/school-yard-gardens-program/

Ages: K–5



Location: Somerville Public School District

Contact: Juliana Soltys,
juliana@groundworksomerville.org

About: Groundwork Somerville provides all year round after-school garden & nature based programming. Students not only maintain their school garden, but also explore science, art, and environmental topics that matter to them!

KESHER TSOFIM: AFTERSCHOOL AND VACATION WEEK PROGRAMS

kesherschools.org



Ages: Preschool–Grade 5

Location: 59 Cross St. Somerville, Ma

Contact: Kat Horion, kat@kesherschools.org

About: 1:30–5:30pm, half day and vacation week coverage available.) We are home to a diverse and welcoming community of families and teachers. In a variety of Keshet programs, during the school year, from Preschool through 5th Grade, children learn Jewish culture and Hebrew language as an organic part of each day's explorations, in a spirited, joy-filled

environment. We focus on arts based learning and have access to a variety of art materials in specially designed studios, as well as a theater arts program every Wednesday!

LIPS AND COLLEGE AND CAREER READINESS PROGRAM

welcomeproject.org



Ages: 13–18 years (High school students)

Location: 530 Mystic Ave, Somerville

Contact: LIPS: Smirline Jacques,
smirline@welcomeproject.org
CACR: college@welcomeproject.org or
sara@welcomeproject.org

About: LIPS trains bilingual teens to use their second language for translation and interpretation throughout the community. CACR helps students from immigrant families navigate the college application process through monthly drop-in workshops on various topics, 1:1 counseling meetings, and college tours.

THE WELCOME PROJECT CULTURE AND IDENTITY SUMMER CAMP

welcomeproject.org



Ages: 7–13 years

Location: 530 Mystic Ave, Somerville

Contact: Smirline Jacques,
smirline@welcomeproject.org

About: July 17–28. M-F 10am–3pm. There is no cost for the program. Our summer programs bring together youth from immigrant families to explore their cultural backgrounds through art projects, field trips, storytelling and photography.

MYSTIC LEARNING CENTER AFTERSCHOOL

mysticlearningcenter.org



Ages: 5–13 years (5–16 for special needs)

Location: 530 Mystic Ave, Somerville

Contact: Tracey Stearns,
info@mysticlearningcenter.org

About: The program is designed to enhance the educational, emotional, and social development of children in a structured program designed to expand their interests and horizons, and to develop positive attitudes toward others. Runs every day and on half days. Walking pick-up from Healey School.



Low cost/
Financial aid available



Transportation
available

PARKOUR AFTERSCHOOL & CLASSES

pkgenboston.com

Ages: 6–13 years, 14–70+ years

Location: Somerville Armory, Boston Bouldering Project, and outdoor parks

Contact: boston.info@parkourgenerations.com
617-302-7542

About: Join our weekly afterschool, evening and weekend classes throughout Somerville for kids (and adults) to stay active all year round. For all abilities and fitness levels, drop-in, full-season, and monthly membership sign up options available!

PARTS AND CRAFTS AFTERSCHOOL

partsandcrafts.info



Ages: 7–13 years

Location: 561 Windsor St. Suite B402 Somerville

Contact: contact@partsandcrafts.org

About: In our makerspace programs we encourage kids to play, think, make, and learn through the exploration of the arts, science, computer programming, and engineering – a cluster of disciplines we refer to as “the creative application of technical skills.” Afterschool, half day, school alternative and weekend programming.

PLUGGED IN YOUTH ROCK BAND CLASS

pluggedinband.org/youth-bands

Ages: 8–19 years

Location: 40 Freeman Place, Needham, MA

Contact: Dan Croft, Program Director,
dan@pluggedinband.org

About: All skills are welcome! Each band of 3-6 students and 1 teacher consists of drums, guitar, bass,

and vocals, and can also include keyboards. Plugged In forms the bands based on music preference and class availability. Bands develop a set list and work as a group, and can include original material and/or cover songs chosen by the students. Each band will choose songs, practice for 1.5 hours per week, record a video set (virtual bands), or perform (in-person bands) at the session-ending concert that benefits a charity chosen by our students. New students don’t need to audition, but our program lead would like to learn more about the person prior to band placement to ensure the best fit possible.

SOCCER WITHOUT BORDERS PROGRAM FOR NEWCOMER YOUTH IN SOMERVILLE

soccerwithoutborders.org



Ages: 11–14 years

Location: Winter Hill Community School field & gym

Contact: Bruno Contreras,
bruno@soccerwithoutborders.org

About: FREE. 35-40 students in the fall, winter and spring, specifically targeting students of Winter Hill. The soccer program content will include soccer play and instructions, academic support, community activities and team building, with a priority on elevating opportunities for youth to connect socially with their peers, providing a safe space to play supporting physical and mental health, and opportunities for youth to practice English in a lower stakes environment than the classroom. Program head coaches will be SWB who are extensively trained in coaching for inclusion, trauma-informed coaching, and coaching for English language development.

SOMERVILLE MEDIA CENTER AFTERSCHOOL PROGRAMS

somervillemedia.org



Ages: 3rd grade and up

Location: 90 Union Square, Somerville

Contact: Evan Tingle, etingle@scatvsomerville.org

About: A variety of afterschool programs and classes throughout the school year. See website for more info.



SOMERVILLE BOXING CLUB

somervilleboxingclub.com



Ages: 10 years and over,
unless accompanied by an adult

Location: 11 Otis St, Somerville

Contact: 617-629-5659

About: Free drop in every day after school from 3pm–8pm and 10am–2pm on Saturdays. Children under the age of 10 must be accompanied by an adult. No sparring and boxing – instead kids learn and practice technique (equipment, hows and whys of speed bags and heavy bags, skipping rope, road work, flipping tires) and training (proper stance, proper punching technique, foot and head movement, hitting the Mitts with a trainer). After being shown technique and training kids are expected to come and train alone as well as hit mitts with a trainer.

SOMERVILLE MEDIA CENTER TEEN GAMING NIGHTS

somervillemedia.org



Ages: 13–19 years

Location: 90 Union Square, Somerville

Contact: Evan Tingle, etingle@scatvsomerville.org

About: FREE. “Video Villens” are Somerville teens who meet Thursdays to create. Most of the time, it’s live streaming gaming tournaments, sometimes it’s moving making, sometimes its meeting with experts in the field; It’s always fun. Teens meet 4-6 p.m. Free food is donated by members of the community supporting arts in Union Square. The program is free and offered year-round.

SOMERVILLE PARKS AND RECREATION INTRAMURAL SPORTS

somervillerec.com



Ages: 7th and 8th grade

Location: varies by program

Contact: Marco Osoy, mosoy@somervillema.gov,
617-625-6600 x 2990

About: Intramural sports for SPS Middle Grade students. Sports vary by season—please see the website for more details.

CREATIVE ARTS PROGRAM

somervillerec.com



Ages: 5–13 years

Location: Powderhouse Park (850 Broadway)

Contact: Jeremy Vallesio, 617-625-6600 x 2999
jvallesio@somervillema.gov

About: Our creative art program allows participants to explore their creative side. Each week there will be a fun new creative project to work on. Participants will use items they’ve never used before to make art such as bubbles, water squirters, shaving cream, and more. There will be group projects along with individual projects as well. Participants will be encouraged to think outside of the box to create their masterpieces.

THE ART HAUS

Ages: 13–18 years



Location: Powderhouse Committee Room
850 Broadway, Somerville

Contact: Ryan Chambers, 617-625-6600 ext. 2993
rchambers@somervillema.gov

About: This program will encourage curiosity, creativity, and shared knowledge. It will allow participants to try different modalities of creative expression while creating a safe space for LGBTQ+ youth and their allies. This program will allow youth to spend time with their peers where identity is important but not the only goal.

THE UMBRELLA TEEN CENTER PROGRAM

Ages: 12–18 years



Location: Powderhouse Committee Room
850 Broadway, Somerville

Contact: Ryan Chambers, 617-625-6600 ext. 2993
rchambers@somervillema.gov

About: This program provides a safe space for LGBTQIA+ youth and their allies to form connections and build community. The Umbrella offers activities, friends, and mentorship to foster the healthy development of queer and trans youth.

SPROUT SPORTS

Ages: 3–5 years old



Location: Edgerly School, 3 Otis Street, Somerville

Contact: Ryan Chambers, 617-625-6600 ext. 2993
rchambers@somervillema.gov

About: Children learn the fundamentals of sports with Somerville Parks & Recreation Staff with an emphasis on developing motor skills and having fun before they get into organized sports. Children will learn the basics of soccer, basketball, baseball, football, and hockey.



Low cost/
Financial aid available



Transportation
available

SOMERVILLE YMCA SACC PROGRAM



Location: 101 Highland Avenue, Somerville

Hours: M–F 2:35–6pm. Open at 12 noon on SPS early release days and 1:45pm on PHA early release Wednesdays. School vacation weeks are from 7:45am–5:45pm.

Cost: \$28 per day for a regular afterschool day and \$50 per day for an early release or full day. EEC Vouchers and Contracts accepted. Limited financial assistance is available during the school year for those families meeting income eligibility guidelines.

Contact: Francesca Ciccone, Registrar
fciccone@somervilleymca.org

About: An Afterschool Program for children that attend any of the Somerville Public School Elementary Schools and Prospect Hill Academy Charter Schools Elementary Schools. The program focuses on keeping kids engaged through swimming, gym, STEAM enrichment activities, Boys and Girls Groups, separated classrooms for K-2 and 3-7th grades, Field trips, outdoor play and Social Emotional Learning Activities. CACFP approved snacks served daily.

Afterschool Transportation is provided from the following schools: Argenziano, Brown, Capuano, East Somerville, Healey, Kennedy, West Somerville, Winter Hill and PHACS. Evening transportation home is available for those families living in a SHA Complex Only (Clarendon Hill Towers, Mystic and North Street locations).

SOMERVILLE YMCA PRE-K/K OST PROGRAM



Location: 97 Highland Avenue, Somerville

Hours: M–F 1:45–6:00pm. Open at 11:30 on SPS early release days and 1:30pm on PHA early release Wednesdays. School vacation weeks are from 7:45am–5:45pm.

Contact: Francesca Ciccone, Registrar
fciccone@somervilleymca.org

About: An Afterschool Program for children that attend some of the SPS Pre-K, Elementary Schools and Prospect Hill Early Childhood Schools. Afterschool Transportation is provided from Argenziano, Capuano, and PHACS. The program focuses on keeping kids engaged through swimming, gym, STEAM enrichment activities, field trips, outdoor play and Social Emotional Learning Activities. CACFP approved snacks served daily. \$30 per day for a regular afterschool day and \$60 per day for an early release or full

day. EEC Vouchers and Contracts accepted. Limited financial assistance is available during the school year for those families meeting income eligibility guidelines and through the SomerPromise Office.

SOMERVILLE Y@PHA OST PROGRAMS



Location: 15 Webster Ave (Grades K-3) and 17 Franklin Street (Grades 4-6)

Hours: M–F 3–6pm. Open at 1:45pm on PHA early release Wednesdays. School vacation weeks hours are from 7:45am–5:45pm.

Cost: \$25 per day for a regular afterschool day and \$50 per day for an early release or full day. EEC Vouchers and Contracts accepted. Limited financial assistance is available during the school year for those families meeting income eligibility guidelines.

Contact: Francesca Ciccone, Registrar
fciccone@somervilleymca.org

About: Afterschool Programs for children that attend either the PHACS Early Childhood Campus (Webster Ave.) or the Upper Elementary Campus (Franklin Street). A program that focuses on keeping kids engaged through gym, STEAM enrichment activities, Field trips, outdoor play and Social Emotional Learning Activities and homework help. CACFP approved snacks served daily.

SOMERVILLE YOUTH HOCKEY

somervilleyouthhockey.org



Ages: 3–under 18 years

Location: Veterans Memorial Rink and Founders Rink

Contact: syhaexecboard@gmail.com

About: SYHA offers learn to skate and learn to play (lts/ltp) hockey programs for ages 3 and up as well as competitive hockey teams for all abilities (ages 4–18). LTS/LTP begins in October; competitive hockey begins in late August. Go to our website to learn more.





Summer Resources & Activities

FOR FAMILIES WITH CHILDREN OF ALL AGES

EVENTS/GROUPS

THE GROWING CENTER

The Growing Center has a variety of activities and events for all ages including: Playgroups, Story-Time, nature play, music, gardening and more.
www.thegrowingcenter.org

SOMERVILLE ARTS COUNCIL

Local community events such as Artbeat, SomerStreets, PorchFest and more!
www.somervilleartscouncil.org

SOMERVILLE PUBLIC LIBRARY

Check out the library for: Summer Reading and other events including: sing-alongs, book groups for kids, and museum passes.
www.somervillepubliclibrary.org

SOMERVILLE PARKS & RECREATION DEPARTMENT

Visit the Somerville Parks & Recreation Department's website for a variety of summer programs
www.somervillerec.com/info/activities/

POOLS

KENNEDY SCHOOL POOL

Classes and family swim from 6 months up.

DILBOY MEMORIAL SWIMMING & WADING POOL

Alewife Brook Parkway, (617) 625-6600 x2980
 (Managed by the City of Somerville, fee charged)

FOSS PARK: DCR LATTA BROTHERS MEMORIAL SWIMMING & WADING POOL

235 Broadway, Somerville, (617) 666-9236

PARKS AND PLAYGROUNDS

WATER PLAY FEATURES, SPRINKLERS & POOLS

Cool off in Somerville at one of the 14 City parks that have water play features:
<http://archive.somervillema.gov/waterpark>

FIND A SOMERVILLE PARK NEAR YOU

www.somervillehub.org



Summer Resources & Activities

FOR FAMILIES WITH CHILDREN OF ALL AGES

FARMERS MARKETS /

OTHER FOOD RESOURCES

- **Davis Square Farmers Market**
Wednesdays: 12:00PM to 6:00PM
May to November, HIP available
www.massfarmersmarkets.org/davis-square-1
- **Union Square Farmers Market**
Saturdays 9:00AM to 1:00PM
May to November, HIP and SNAP match available
www.unionsquaremain.org/2020-season
- **Somerville Mobile Farmers Market**
stops at SCALE, ESCS, North Street Housing, and Mystic Housing, HIP, SNAP match, and other food assistance (can take out if no space) discounts available www.somervillemobilefarmersmarket.wordpress.com
- **Cambridge Farmers Markets** www.cambridgema.gov/CDD/parks/farmersmarkets
- **Find information** about daily community meals, food pantries and other great local resources at: www.somervillefoodsecurity.org

FAMILY OUTINGS

FREE FRIDAYS

- Every Friday, June–August, a number of attractions/museums are free to the public - Offered by Highland Street Foundation.
For more info: www.highlandstreet.org

ZOOS

- **Franklin Park Zoo** – Boston
www.zoonewengland.org
- **Stone Zoo** – Stoneham
www.zoonewengland.org

BEACHES/ BIKE PATHS/ EVENTS/ FARMS /WALKS

- **Boston Harbor Walk:** www.faneuilhallboston.com/bostonharborwalk/
- **Boston Public Garden** – swan boats:
www.cityofboston.gov/parks/emerald/public_garden.asp
- **County and State Fairs:**
www.countyfairgrounds.net/massachusetts/massachusetts.php
- **DCR** (Department of Conservation and Recreation) Events: www.mass.gov/eea/agencies/dcr/massparks/programs-and-events/
- **Drumlin Farm** – Lincoln, MA: www.massaudubon.org/Nature_Connection/Sanctuaries/Drumlin_Farm/index.php
- **Institute of Contemporary Art** has free family events the last Saturday of each month:
www.icaboston.org/calendar
- **Massachusetts Beaches:**
www.visit-massachusetts.com/beaches
- **Minuteman Bikeway:** www.trailink.com/trail/minuteman-bikeway.aspx
- **Museum of Fine Arts:** www.mfa.org
- **Walk Boston** – download maps here:
www.walkboston.org/resources/maps.htm
- **Middlesex Fells Reservation:**
www.friendsofthefells.org



For more info: www.somervillehub.org