
Out-of-School Time

Expanding Minds and Opportunities
through Quality Programming

—

**How many Somerville Public
Schools students participate
in school-based structured
OST programs?**

—
1,800+. That's more than 38%
of SPS students.

(This includes Community Schools, partner-led programs embedded in our schools throughout the school year, and students participating in varsity and club sports. Many other students also participate in other school clubs.)

We know there's a greater need.

How do we collectively meet that need?

Knowing our history

Addressing challenges

Outlining next steps

Collective action

Key Areas of Focus

**Increased
funding for FY24**

**Strengthening
OST design**

**Cross-sector
partnership and
program
expansion**

SPS OST Programs

Community Schools: site-based program serving students in grades PK-6 at every PK-8 school, 706 students

El Sistema Somerville: Instrumental music program serving students in grades 3-8 district-wide at ESCS, 85 students

Breakthrough Greater Boston: district-wide grades 6-12 215 students

Enroot: Somerville High School; 59 students

Boston Debate League: Brown, Kennedy, East and SHS; 72 students

Becoming a Man: SHS, Healey and Winter Hill, 137 students

Working on Womanhood (WOW): SHS, 55 students

The Calculus Project: district-wide grades 6-8, 60 students

Soccer w/o Borders: Winter Hill, grades 6-8, 59 students



Community Schools

Community Schools

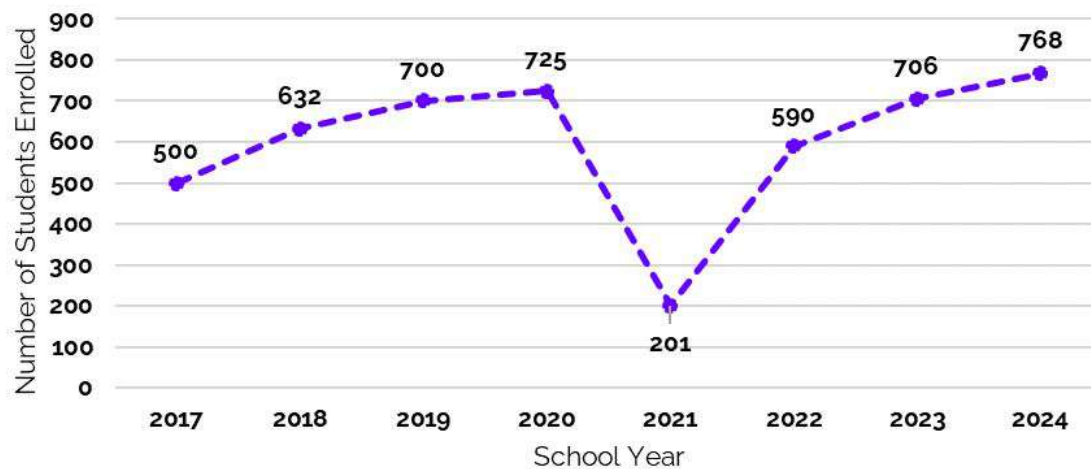


Enrollment Trends

- 2016-2017: 500
- 2017-2018: 632
- 2018-2019: 700
- 2019-2020: 725
- 2020-2021: 201
- 2021-2022: 590
- **2022-2023: 706**
- 2023-2024: 768



Community Schools: Historical Enrollment Trends



Community Schools

Operational Structure

- School-based programming serving students in grades PK-6 in every PK-8 school in the district
- Site Directors and Asst. Directors provide oversight and support at respective site
- Wraparound support services through a Community Schools Social Worker and a Student Services Coordinator
- Program staff includes Lead Teachers, Asst. Teachers, Student Interns/Assistants
- Most staff are part-time who also work as educators, paraprofessionals or in other fields
- Full-time staff also work in other positions in district or out
- Community partners supplement programming, offering more specialized activities
- Minimum required staff-to-student ratio is: 1 : 10 for PK and 1:13 for K-6

Community Schools

Registration Process

- Registration takes place in January for PK and K, coinciding with school registration, and in March for returning families. Enrollment is done after school placement is announced. PK and K are in different classrooms from grade 1 and up so it does not impact space for older grades.
- Office staff and coordinators are multilingual, offer registration support, and assist families with questions or technical issues
- Returning and financially challenged families receive placement priority
- Number of seats available based on staffing predictions
- Spring is early to adequately predict staffing; families may be waitlisted as staffing efforts continue
- Placements continue through fall to accommodate as many families as possible

Community Schools 2023-24 Enrollment

School	Students Enrolled	Students Waitlisted
Argenziano	89	30
Brown	105	10
Capuano	60	25
East Somerville	132	5
Healey	77	5
Kennedy	120	28
West Somerville	96	4
Winter Hill	89	3
TOTAL	768 (709 in October 2022)	110

Community Schools Teacher Vacancies

Argenziano School	5
Brown School	2
Capuano Early Childhood Center	4
East Somerville Community School	2
Healey School	3
Kennedy School	4
Winter Hill Community Innovation School	3
West Somerville Neighborhood School	2

**Minimum Staff-
to-Student Ratio**
1:10 PK
1:13 K+

Teacher Recruitment Efforts

- In addition to posting on Talent Ed, multiple positions have also been posted to Indeed to reach a wider and more diverse pool of applicants
- Posting positions on Handshake to reach out to college students
- Attending job fairs in community and at local universities
- Creating more high school level positions to create a pathway for students to advance to higher level positions
- Sharing positions with our families and school liaisons for referrals

Partner Programs

Partner OST Programs - Enrollment Trends

El Sistema Somerville

2017-2018: 85
2018-2019: 76
2019-2020: 65
2020-2021: 53
2021-2022: 77
2022-2023: 85

Breakthrough GB

2018-2019: 47
2019-2020: 91
2020-2021: 136
2021-2022: 166
2022-2023: 215

Enroot

2016-2017: 27
2017-2018: 40
2018-2019: 48
2019-2020: 88
2020-2021: 55
2021-2022: 60
2022-2023: 59

Boston Debate League

2019-2020: 34
2020-2021: 59
2021-2022: 69
2022-2023: 72

BAM

2021-2022: 65
2022-2023: 137

WOW

2022-2023: 55

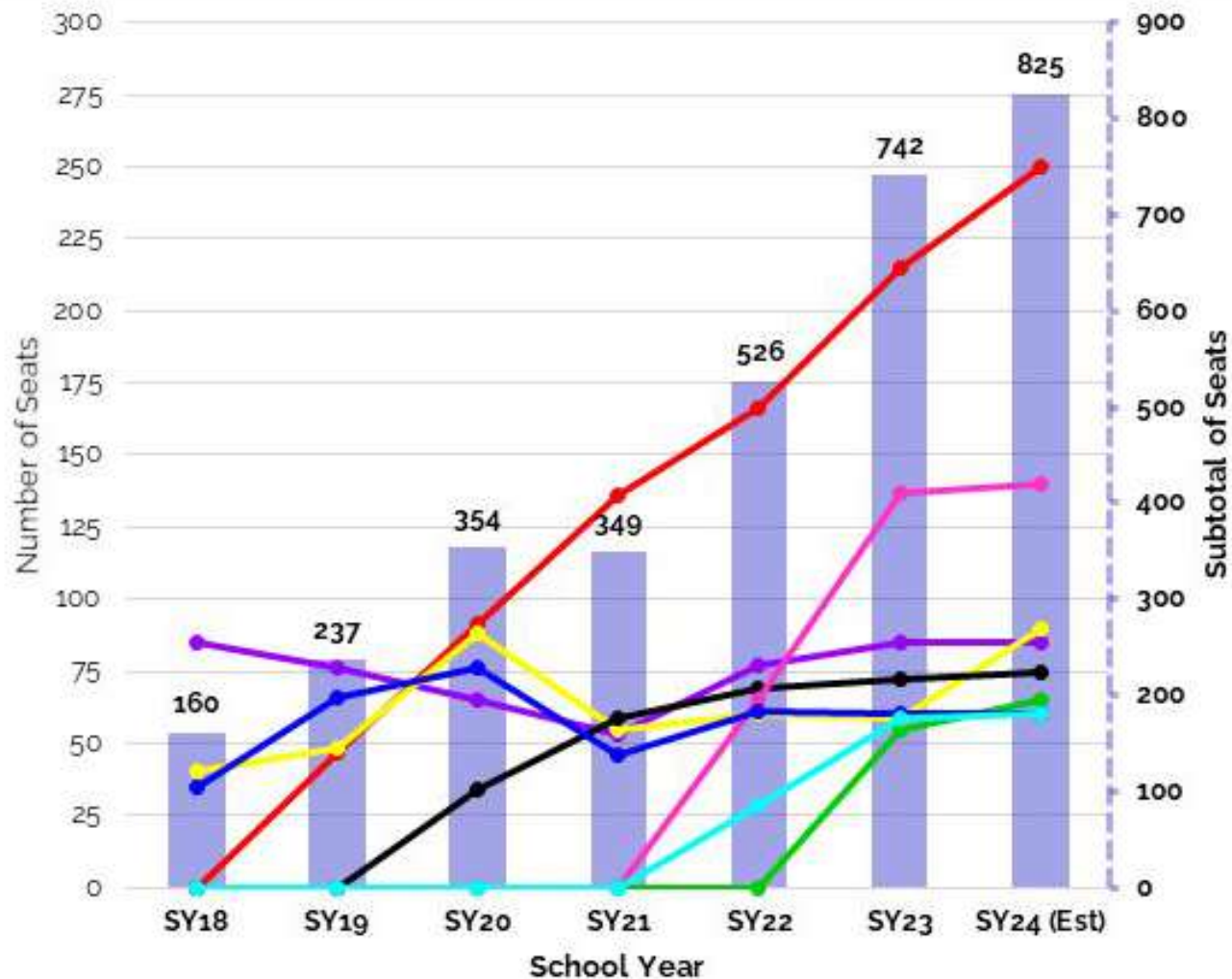
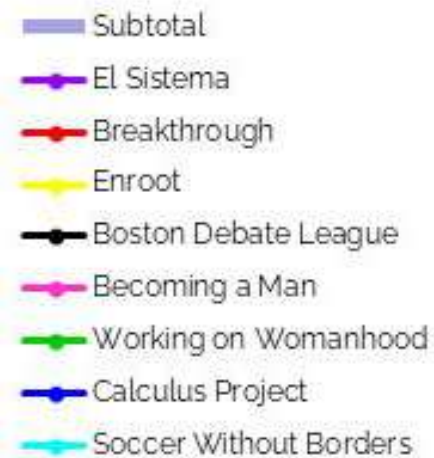
The Calculus Project

2017-2018: 35
2018-2019: 66
2019-2020: 76
2020-2021: 46
2021-2022: 61
2022-2023: 60

Soccer w/o Borders

2021-2022: 28
2022-2023: 59

OST Seat Expansion



Investing in our youth

SY23 SPS OST Investment

Community Schools: \$2,446,122

El Sistema Somerville: \$300,000

Breakthrough Greater Boston: \$425,000

Enroot: \$125,000

Boston Debate League: \$24,500

Becoming a Man (BAM) & Working on Womanhood (WOW): \$420,000

The Calculus Project: \$80,000

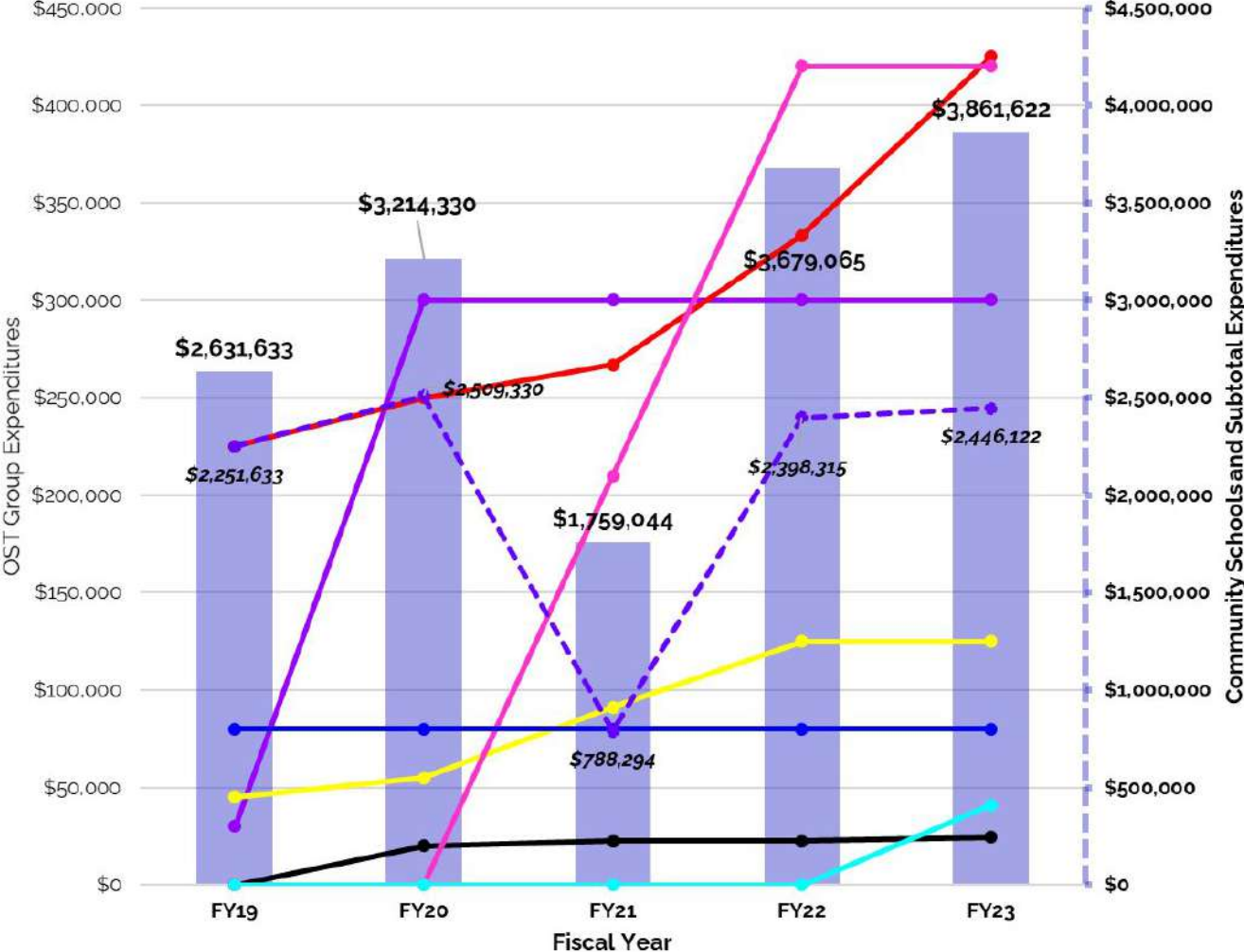
Soccer Without Borders: \$41,000

\$3,861,622

**FY23 OST
Investment**

OST Expenditures

- Subtotal
- El Sistema
- Breakthrough Greater Boston
- Enroot
- Boston Debate League
- Becoming a Man (BAM) and Working on Womanhood (WOW)
- The Calculus Project
- Soccer Without Borders
- Community Schools



Our Next Steps

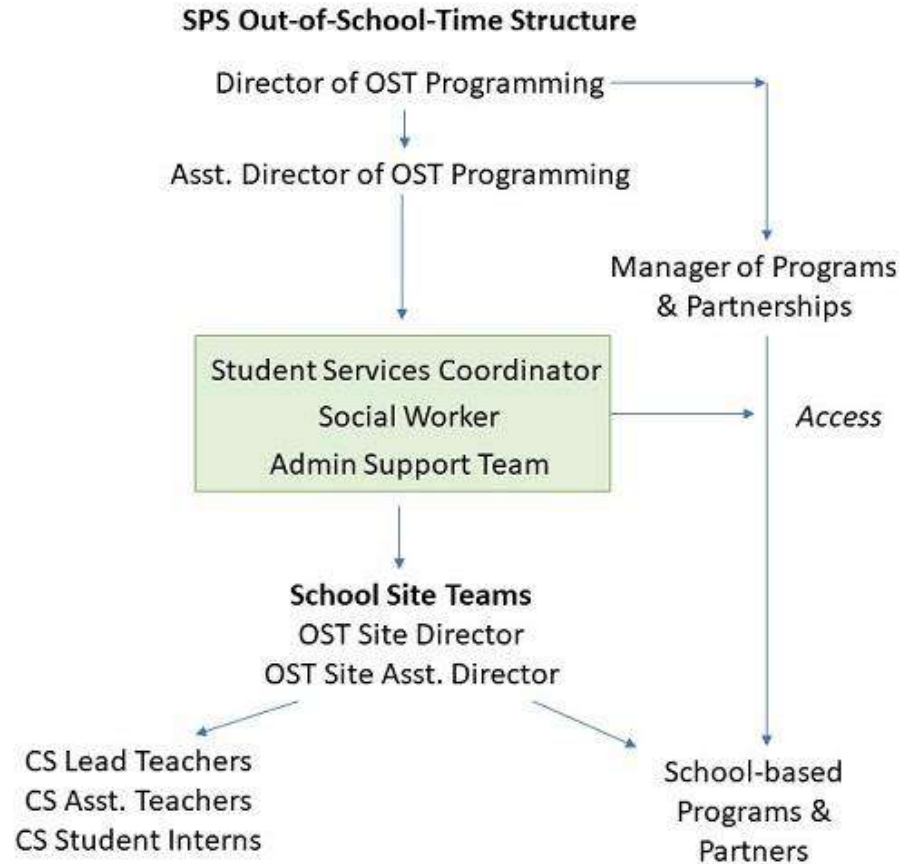
Sustainable infrastructure to support continued growth

Leverage OST operational systems and skills to align supports across programs

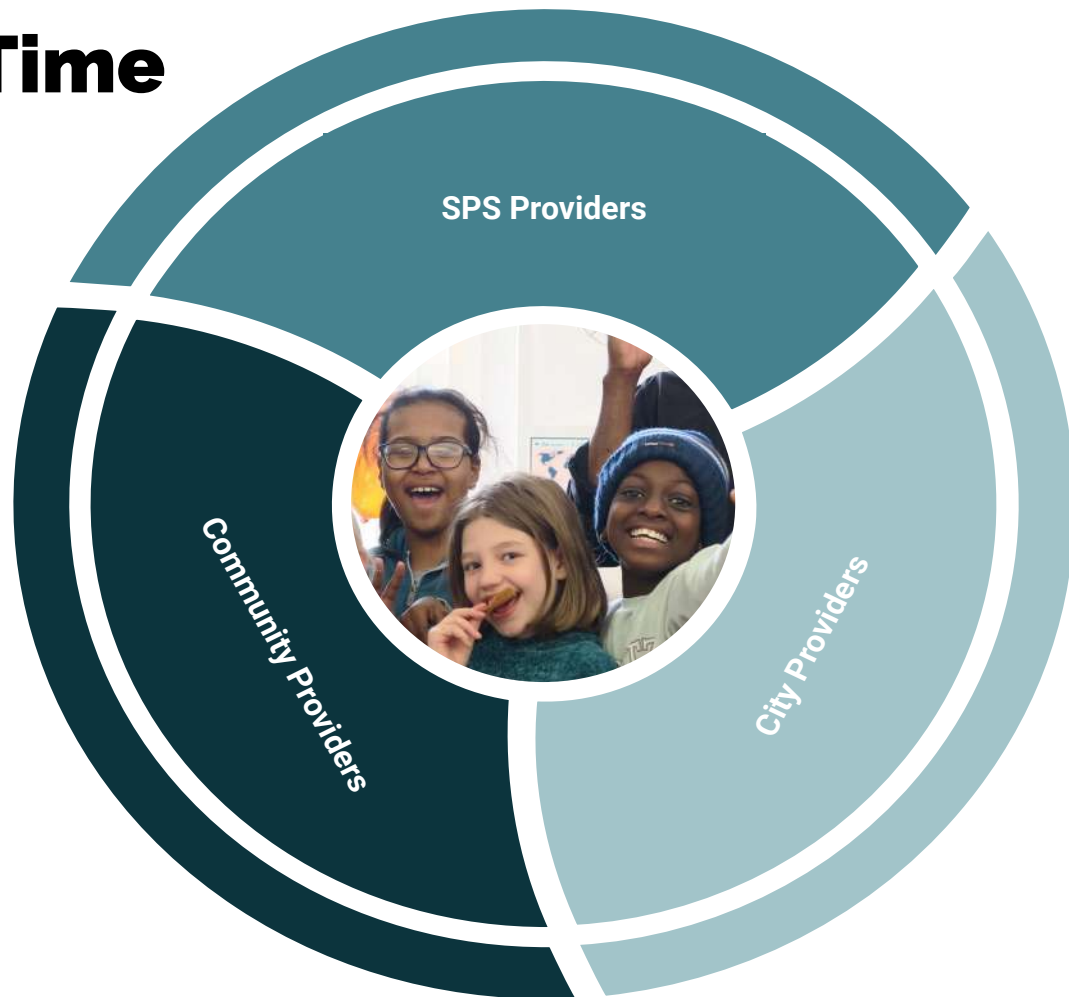
Restructure District OST Model for greater efficiency and effectiveness

Identify challenge areas and develop improvement plan(s)

Identify program service gaps and solutions, working with city and community partners



Out-of-School-Time Ecosystem



SOMERVILLE 
PUBLIC SCHOOLS