

of additional structures (try to do most sig. but anything works!)

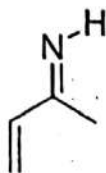
2.8 ASSESSING THE RELATIVE IMPORTANCE OF RESONANCE STRUCTURES

In the example above, the second resonance structure has an oxygen with a positive charge. But this oxygen does *not* have its octet, and therefore, this resonance structure is not significant.

PROBLEMS For each of the following compounds, draw all of the significant resonance structures.

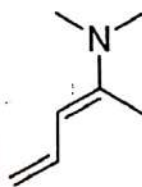
2

2.61



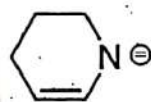
2

2.62



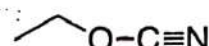
1

2.63



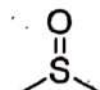
2

2.64



1

2.65



4

2.66



