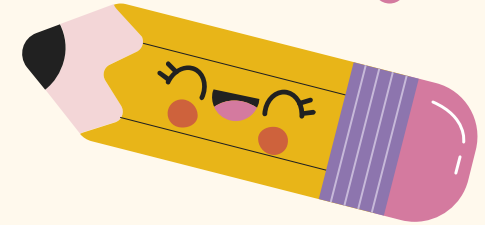




Kindergarten Parent Information Meeting

Newburyport Public Schools
2022-2023

Class of 2035



Who is who?

Sean Gallagher, Superintendent

LisaMarie Ippolito, Assistant Superintendent

Nancy Koch, Director of Student Services

Jamie Sokolowski, Interim Principal

Michael Munroe, Assistant Principal

Dr. Leah Salloway, Early Childhood Director

Theresa Fitzpatrick, Special Education Team Coordinator (1-3)

Nelson Lane, School Nurse

Rachel Brown, BCBA

Meeting Overview

- ★ Newburyport Public Schools Mission & Beliefs
- ★ Francis T. Bresnahan Elementary School
- ★ Kindergarten Program
- ★ Extracurricular Opportunities & Special Events
- ★ Community & Family Engagement
- ★ & More!
- ★ Registration Process & Forms
- ★ Q&A

Newburyport Public Schools Mission & Beliefs



NPS Mission

The port where tradition and innovation converge!

Students achieve intellectual and personal excellence

Students are equipped for life experiences

School communities who:

- Practice kindness and perseverance.
- Celebrate each unique individual.
- Value creativity, experiential and rigorous educational opportunities, scholarly pursuits, and life-long learning.
- Provide nurturing environments for emotional, social, and physical growth.
- Understand and embrace their role as global citizens.

NPS Beliefs

We believe that:

Each person is worthy of respect;

A strong community celebrates individual uniqueness;

Each individual has inherent worth;

Opportunity stems from adversity; growth from mistakes;

Through reflection we gain understanding;

Compassion and empathy build community;

Everything can be done with kindness;

Individuals are responsible for their own actions;

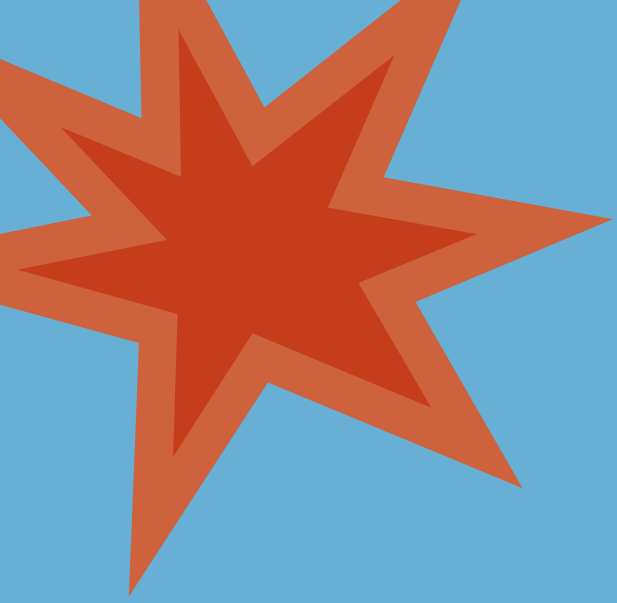
Attitude has power;

We each have an obligation to serve one another;

Trusting relationships require clear and open communication;

A community is responsible for its individuals;

Education is fundamental to an empowered, evolving society.



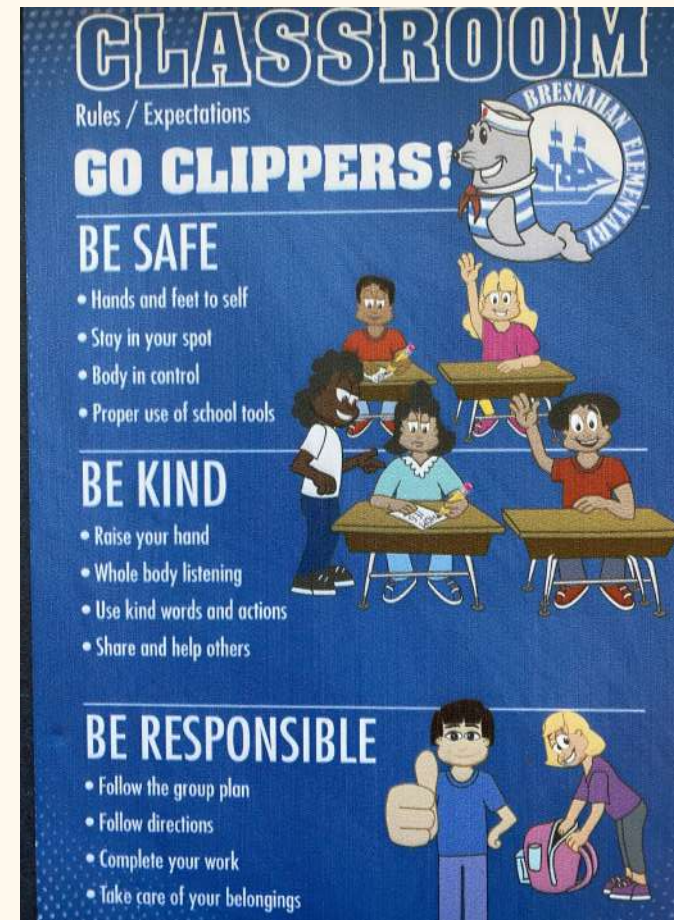
**Francis T.
Bresnahan
Elementary School**

Our Values & Goals

Be Safe

Be Kind

Be Responsible



Our Programs, Services, & Support

GRADE LEVELS:

- Preschool
- Pre-Kindergarten
- Kindergarten
- Grade 1
- Grade 2
- Grade 3

SPECIAL EDUCATION PROGRAMS

- TLC
- IDC
- Inclusion

RELATED SERVICES:

- Occupational Therapy
- Physical Therapy
- Speech and Language Pathology
- Board Certified Behavior Analysis

SPECIAL SUBJECT PROGRAMS:

- Physical Education
- Visual Art
- Music
- Library
- STEM

CONTENT SUPPORT:

- Math Coaching
- Literacy Coaching
- Math Intervention
- Literacy Intervention (Title I)
- Technology Integration

Our Facilities

Our bright and welcoming 21st century school building first opened the doors in 2014, featuring spacious classrooms with 21st century technology (including interactive projectors, tablets, laptops and wi-fi throughout the building). The beautiful architecture is so appropriate for the Port City, from porthole windows to the nautical-themed terrazzo floor and tiles hand-painted by student on the walls. Other features include:

- Spacious art room with racks for storing student art in progress
- Music room including a performance stage with lighting
- Full-size gymnasium/auditorium
- Cafeteria with oval tables and booths
- Extra-large PreK / K classrooms with bathrooms and cubbies inside the room
- Grades 1-3 L-shaped classrooms with lockers in the hallways
- Security cameras throughout the interior and exterior of the building
- Buzzer system and double secure entrances

This beautiful building provides the educational setting for 120 staff members and 650 students.











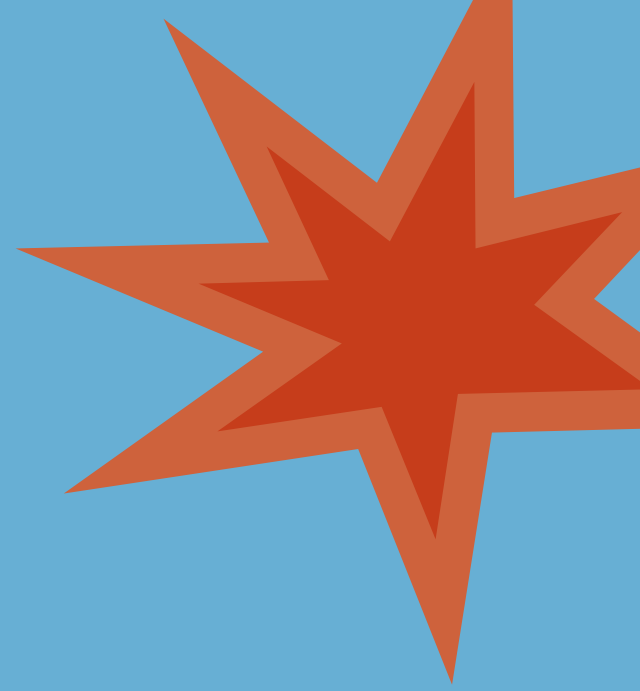








Kindergarten Program



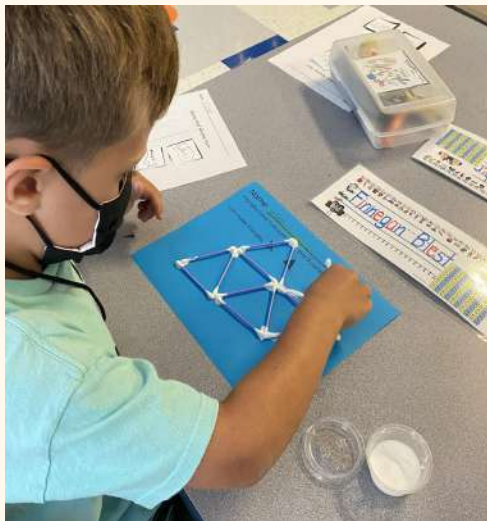
Our Approach

We employ a Responsive Classroom approach emphasizing social, emotional and academic growth in a strong and safe school community. Our curriculum is designed in alignment with the common core standards to teach early literacy skills and foundational mathematical concepts. Our educational philosophy is predicated on the belief that all children have individual differences which are best met through high quality teaching and differentiated instruction. We offer an inclusive, full service program including related services and behavior support for all students.

Our Curriculum

Massachusetts Curriculum Frameworks

- Savvas MyView Reading
- Foundations -Word Study Program
- Eureka Math
- StemScopes
- Literacy • Math • Social Studies • Science •
Social-Emotional Learning • Music and Movement • Art •
Purposeful Play
- Massachusetts Standards for Preschool and Kindergarten
Social and Emotional Learning and Approaches to Play
and Learning



Social Skill Programming

Students work on age appropriate tasks such as:

- Maintaining classroom norms
- Developing self-help skills including clothing management, mealtime management, and hygiene skills.
- Sharing and being kind
- Building focus and following directions
- Identification of feelings and building empathy
- Building our Clipper Values of being safe, kind, and responsible



How Content is Delivered

Lessons are delivered in a range of formats of instruction. This includes:

- Large group instruction
- Small group instruction
- Individual instruction and progress monitoring
- Through the use of paper based and technological resources including books, apps, iPads, and manipulatives.
- Play time and time to engage in their environment is a key part of the Kindergarten experience for students.

Our Staff

- Classrooms are supported by:
 - Teachers
 - Instructional Assistants
 - Special Educators
 - Related Service Providers

Our Schedule

Students Arrive at 8:05

Students are Dismissed at 2:55

- The day is 6 hours and 45 minutes in length
- Students receive Music, Art, PE, Library, and Technology Integration.



Our Schedule (cont.)

- ARRIVAL (attendance, lunch count, etc.)
- MORNING MEETING (agenda, calendar, songs, etc.)
- LITERACY BLOCK (read alouds, phonemic awareness, modeled writing, etc.)
- SNACK
- CENTER TIME (reading, math, science, arts & crafts, writing center, etc.)
- LUNCH/RECESS
- MATH/SCIENCE (manipulatives, problem solving, observing, etc.)
- SPECIALISTS (PE, Art, Music, Library, Computer)
- FREE CHOICE
- DISMISSAL

Meal time

- Breakfast-Has been provided for free during COVID
- Snack time once per day
- Lunches can be brought from home or purchased as part of our lunch program.
- All snacks must be nut free
- Due to social distancing constraints, lunches are currently nut free as well
 - Eat lots of vegetables & fruits and remember to drink water





PBIS - Positive Behavioral Supports

PBIS programming is an important hallmark of our school community.

Students are recognized for their efforts to uphold our Clipper Values of :

Be Safe

Be Kind

Be Responsible

Students benefit from previewing of school based expectations through this lens. These concepts are used to teach positive and pro-social behaviors throughout the different settings and environments of the school day.





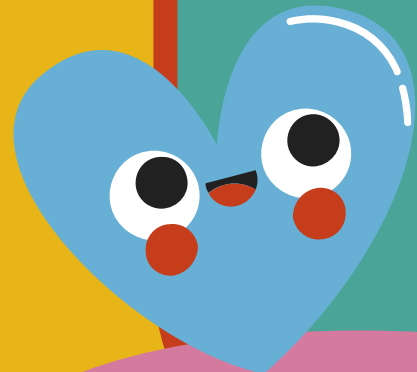
Recess & Play

Play is an important part of our students' day. Each student has daily recess and opportunities for movement and play breaks throughout their day.

Students are encouraged to learn by exploring and to practice their social skill development in both structured and unstructured setting.

Learning friendship skills and safety skills is one of our top priorities.

...and use equipment properly



Our Playgrounds

There are two playgrounds behind the building. The ages 2-5 playground is fenced in with a riding track around the perimeter. The ages 5-12 playground features multiple, unique structures (there's even a pirate ship). Both are ADA accessible and have a rubberized surface. Finally, there is a basketball and 4-square area.

Parents and caregivers can relax in shaded seating while watching their little ones play. The playground is open to the public after 3 pm on weekdays and during daylight hours on the weekends.



Nurse Visits

Nurse Nelson

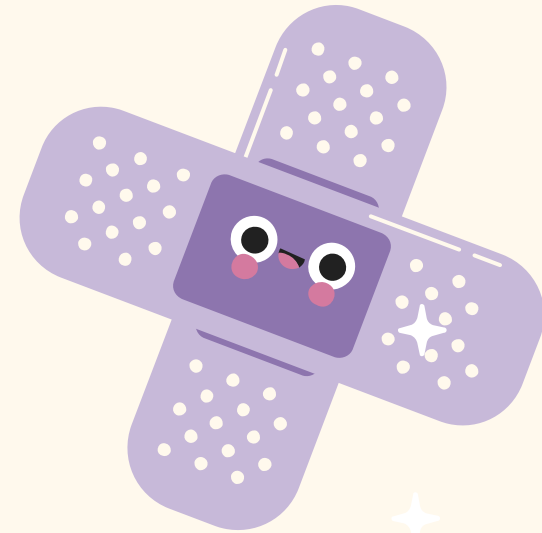
Required paperwork

- 5 year physical
- Up to date immunizations
- Confidential Health Form

We will be using a patient portal to communicate with parents next year. You will receive an email with instructions to set up your account. With the portal you will be able to


- Upload physicals, immunizations, and doctors notes
- Communicate directly with the nurse
- Update your student's medical conditions

If your student has special medical needs please contact Nelson at nlane@newburyport.ma.k12.ma.us






COVID Safety Measures




In adhering to COVID protocols, students wear masks throughout their day with the exception of snacks, lunch, and outdoor play.

Students are seated a minimum of 3 feet apart for academic activities and mealtimes.





Frequent handwashing and sanitization of spaces and materials is part of our daily program.

Symptomatic testing is available.



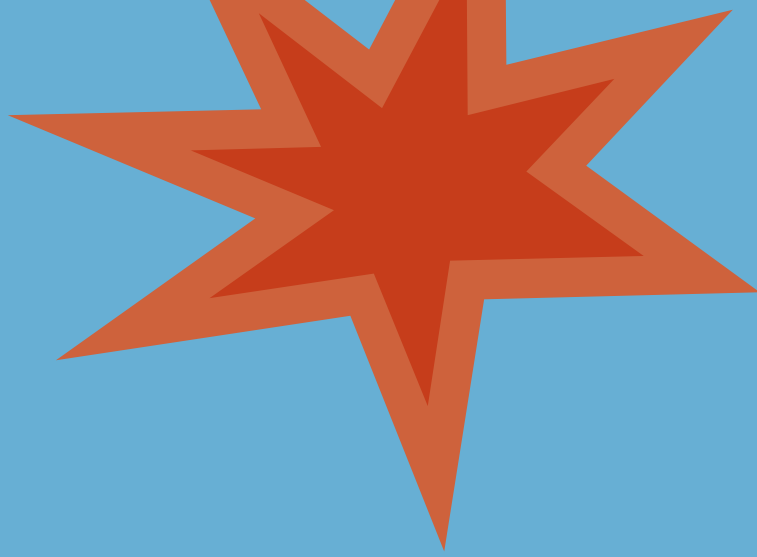
All practices are completed with oversight and input from our nurse leader and the state.



Transportation

Methods for student transportation are:

- **Walker** - the student walks to and from school
- **Rider** - the student is driven to and from school and is dropped off/picked up in the car line
- **Bus** - the student rides a bus to and from school (via Salter Bus Company). Bus registration will take place over the Summer.



Extracurricular Opportunities & Special Events

Before/After School Programming

- Newburyport Youth Services (NYS): The mission of NYS is to create quality programs, events and services for our City's youth in safe and supportive environments that encourage growth, self exploration and empowerment. Learn more and meet our staff!
- YWCA School's Out Program: Licensed by the Commonwealth of Massachusetts Department of Early Education and Care, the School's Out Program @ Bresnahan grew out of women's economic needs for safe, world-class programs to serve their children while they pursue their professional goals. We responded by providing a warm, caring atmosphere where children are accepted unconditionally. The program is inclusive, open to all children regardless of color, race, economic status, religious background, or family composition. Staff members strive to create an environment, which is a careful balance between reliable security and stimulation that fosters exploration and growth.
- PTO Morning BOKS Program
- Staff Programming Before and After-School

Field Trips

- Annual Field Trip to AppleCrest Farms in Hampton Falls, NH



School Events

- Cultural Enrichment events such as the Tanglewood Marionettes, Curious Creatures, or Animal Craze

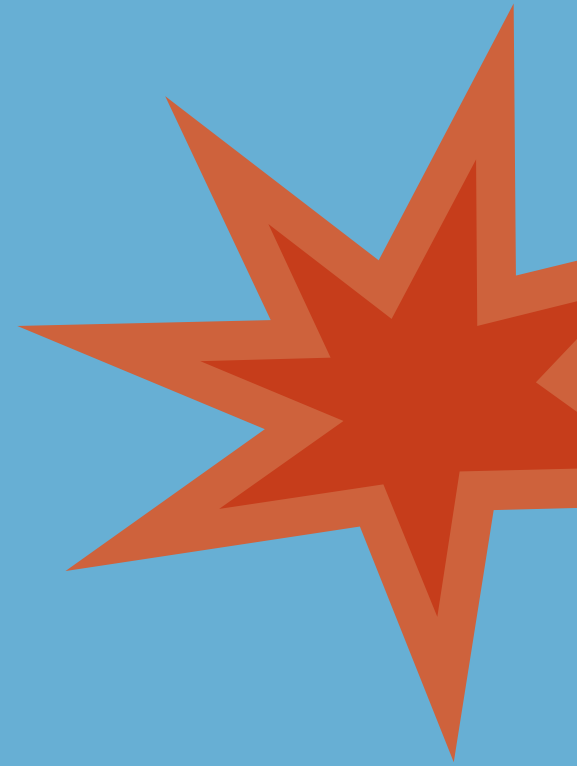


Community & Family Engagement

PTO - <https://www.newburyportpto.com/>

NEF - <https://www.newburyportef.org/>

Registration Process & Forms



Registration Process

Registration for the 2022-2023 academic year will begin February 1, 2022.

All application forms have been updated.

Applications will be accepted from:

- February 1 – February 5, February 8 – February 12, February 14 – February 18: school days only from 10:00AM – 2:00PM at the Bresnahan School Main Office (Door #1). Please note the offices will be closed from February 21 - 25 for school vacation week.
- Or may be scanned and emailed to lmorasse@newburyport.k12.ma.us or jsokolowski@newburyport.k12.ma.us
- Or may be mailed to the school
- Or may be faxed (978) 465-2112

Please note masks are required to enter the building.

CONTACTLESS DROP-OFF: Please leave completed applications in a sealed envelope in the drop box entitled KINDERGARTEN REGISTRATION. If you have a question please ring the bell at Door #1.

Registration Forms

[2022-2023 Kindergarten
Registration Forms](#) (click here)



Questions???