



# Hawk Talk

## La Pine Middle School

541-355-8200 16360 1st Street, La Pine, Oregon 97739



November 2022

### A MESSAGE FROM PRINCIPAL BARRINGER

Dear LPMS Families,

I just wanted to send a quick thank you to families, staff, and students for a great start to the year. It is hard to believe that we are finishing up the first quarter of the school year.

I also wanted to send a quick shout-out to our fall sports athletic programs.

Congratulations on having fantastic seasons. A reminder that boys' basketball will be starting practice this week. Good luck to all our students participating.

Reminder to have students dress warm as the cold weather approaches. Attached is our delayed schedule in case of inclement weather.

We are still looking for a few more site council members. If you are interested in joining, please contact the front office.



*Mr. Barringer*

### IMPORTANT DATES

**Friday, November 4** - Picture Retakes

**November 7th-18th** - Canned Food & Coin Drive

**November 11th**- Veteran's Day - No School

**November 18th**- College and Career Day

**November 21st- 25th**- Thanksgiving Break- No School

**February 15, 2023**- Immunization School Exclusion Day



### SCHOOL START AND END TIMES

**Monday, Tuesday, Thursday,  
and Friday:**

**8:45 a.m. - 3:45 p.m.**

**Wednesday:**

**8:45 a.m. - 2:15 p.m.**

**\*\*Doors open at 8:2am\*\***

**Stay Connected**

Facebook LPMS Website Text Alert Service District Calendar District Website District Twitter

## Digital Citizenship

Bend La Pine Schools uses Common Sense Education to guide students through grade appropriate lessons on safe and effective use of digital tools and platforms. If you'd like to work with your student on digital citizenship at home, these Teen Voices videos, Social Media Test Drive, and Parent's Ultimate Guides are all excellent resources.

## LPMS Gear Online Store

Check out our new school gear online store here:

<https://sideline.bsnsports.com/schools/oregon/lapine/lapine-middle-school>

## Smile for Kids

A Smile for Kids has a very exciting opportunity to help underserved youth in the tri-county area receive free braces. Pacific Source has funds that need to be spent by the end of the year and has partnered with ASK to provide braces for FREE through the A Smile For Kids program. Please see the attached Press Release.

Here is the flyer

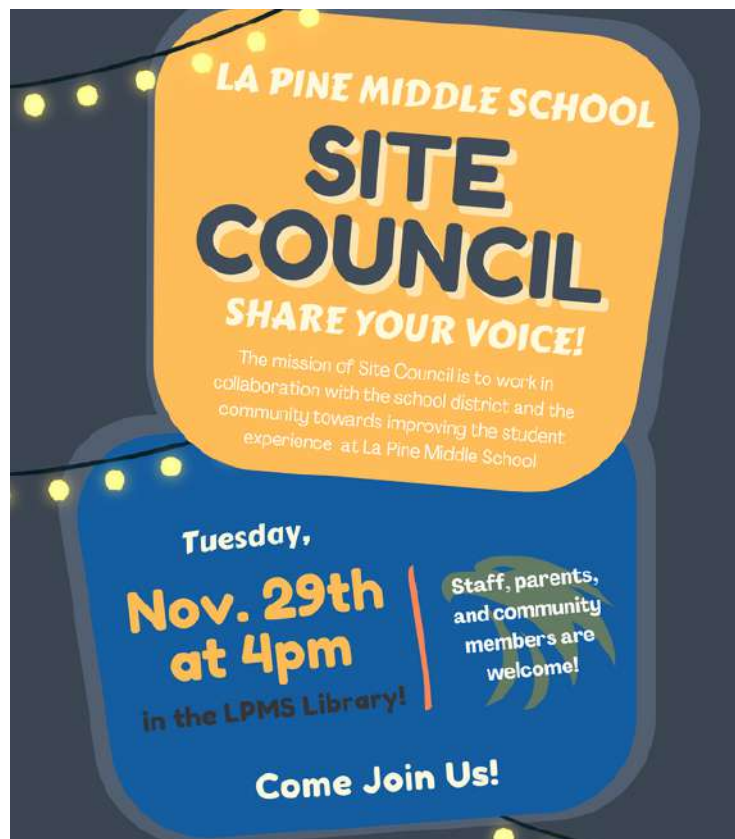
## Hawk Athletics

6th and 7th grade boys basketball starts on Tuesday, November 1st at 5:30.

8th graders first practice will be on Thursday, November 3rd at 4:00.

The first scheduled game date is for Tuesday, November 8th, first game is at 5:00pm second game will start at 6:00.

No actual schedule is out as of yet.



## Inclement Weather

As weather begins to change, it is important to be prepared for potential school delays and closures.

To sign up for text alert service:

<https://connect.bend.k12.or.us/>

BLSD Main Inclement Weather page:

<https://www.bend.k12.or.us/district/news-events/alerts-updates>

### 2 Hr Delay Bell Schedule 22/23

Breakfast	10:35 - 10:45
1st Period	10:50 - 11:23
2nd Period	11:28 - 12:01
3rd Period	12:06 - 12:39
1st Lunch & 4th Period	12:39 - 1:13; 1:18 - 1:51
4th Period & 2nd Lunch	12:44 - 1:17; 1:17 - 1:51
5th Period	1:56 - 2:29
6th Period	2:34 - 3:07
7th Period	3:12 - 3:45

# Community Corner



## Deschutes Public Library

Come join Deschutes Public Library for Middle Ground events at our Sunriver or Downtown locations during the La Pine branch's renovations this winter. During renovations, you will still be able to pick up books and do some browsing but space is limited. In November, you can create gratitude jars on November 3rd in Sunriver or Downtown on November 16th. We also will have online events focused on Your Next Read and OBOB. Click here to see our YouTube channel. Can't wait to see you!



## Connect Workshop

Connect Workshop at Sunriver Deschutes Public Library on Wednesday, November 16th at 5:30pm. Connect Workshops are for parents of students between 5th-10th grade. The goal of the Connect Workshop is to positively influence parent-child dialogue in regards to the harms of marijuana and other potentially risky adolescent behaviors including but not limited to; adolescent gambling, gaming and digital screen use.

The Workshop primarily uses The Marijuana Talk Kit with the understanding that the skills, information and strategies learned can be applied to an array of adolescent risk factors for other harmful adolescent behaviors.

Register at this link:

<https://www.eventbrite.com/e/parent-connect-workshop-sunriver-deschutes-public-library-tickets-412977997307>

# 2022 Construction Bond Information

## Overview:

Request for community support to issue \$249.7 million in general obligation bonds to improve safety and modernize aging schools and classrooms in Bend-La Pine Schools.

## Why?

Nearly half of the district's buildings were built prior to 1980. Some were built more than 90 years ago – the oldest was built in 1918. Though these buildings have been well maintained, many are in need of major repair and maintenance to extend their life and usefulness. In addition to maintenance and modernization, many of these buildings will benefit from safety and security improvements to help keep students and staff safe.

## What?

Safety and security improvements district-wide such as upgrading interior classroom door handles and door locks;

Delivery of safety improvements at Juniper Elementary School that include moving the main offices to a location that improves visibility and visitor management;

Replacement of Bend Senior High School's inefficient 70-year-old classrooms on the current school property to improve safety, security, and instruction;

Delivery of about a dozen maintenance and safety projects at La Pine area schools;

Protection of the community's investment in school buildings by making repairs and improvements district-wide including the replacement of aging roofs;

Classroom additions and modernization projects; and

Money saving energy improvements to boilers, HVAC and lighting systems.

## Economic Engine

Passage of a \$249.7 million bond measure will sustain jobs in our community each year; and Bend-La Pine Schools will hire local contractors to do the construction work to the greatest degree possible in order to sustain employment opportunities for Central Oregonians.

## No Increase to Current Tax Rate

With approval of this bond and continued retirement of existing bonds, we anticipate the District's overall general obligation bond tax rate will not increase. New residents moving into the community will assist in the repayment of the bonds.

# La Pine Middle School Grade Explainer

During the 2021-2022 school year, Bend-La Pine Schools began to research new ways of assessing students and displaying student performance in Canvas, ParentVue, and StudentVue. Staff at La Pine Middle School decided to move to a 0-4 scale that measures a student's ability to learn the material and skills taught in class.

The first big change students and families will notice is LPMS is no longer using the traditional A-F grade scale. Instead, teachers will evaluate student performance using the 0-4 scale below.

Understanding the Final Grade Scale Conversion

Levels	Name	Grade Conversion	Canvas percent conversion
0	Missing/Incomplete	0 - 0.79 = F	0 - <20
1	Beginning	0.80 - 1.59 = D	20 - <40
2	Developing	1.60 - 2.39 = C	40 - <60
3	Proficient	2.40 - 3.19 = B	60 - <80
4	Advanced	3.20 - 4.00 = A	80 - 100

A second large change that can be confusing to students and families who are used to the old grade calculation system (90-100% = A, 80-89% = B, etc.). These are no longer used when calculated grades. To best understand grades, do not use percentages. Instead, focus on the 0-4. For those that would like to utilize percentages, the table below outlines how they are used with the 0-4 scale and Canvas.

In Canvas, Students and Families will see several details that work together to determine an overall grade.

## Frequently Asked Questions:

Q. Why does my student have 0/4 on some assignments?

A. A 0 means the assignment was not submitted or was submitted with no work present.

Q. Why does my student have a dash for some assignments?

A. A dash indicates an assignment that has not yet been assessed.

Q. Why are assignments in different categories?

A. Teachers may use assignment categories to weight assignments. Weighting assigns levels of importance to classwork. This information is available to you on the syllabus for each course.

The screenshot shows a Canvas course page for Math 9. The page is divided into two main sections: 'Grades' and 'Front Page'. The 'Grades' section displays a 'Total Grade' of 74.38% (B+). Below this, a list of assignments is shown, including 'U1 Progress Check 1' through 'U1 Progress Check 4', and 'Unit 1 Chapter 1 Assessment' and 'Unit 1 Summative Assessment'. The 'Front Page' section shows the 'Current course grade' as 74.38% (B+). Annotations with arrows point to various elements: 'Assignment Category' points to the 'Formative' category; 'Assignment' points to the 'U1 Progress Check 2' assignment; 'Quiz/Test' points to the 'Unit 1 Chapter 1 Assessment' assignment; 'Current course grade' points to the '74.38% (B+)' grade; 'Performance level score' points to the '3 / 4' score for 'U1 Progress Check 2'; and 'Inbox Message' points to the 'Contact teacher with questions or concerns' button.

Finally, Bend-La Pine Families are essential partners in their children's education. The Canvas Observer Account gives access to the classroom, providing information and tools to help them support and encourage learning. Keeping track of assessments and grades is one-way families can help.

Please contact your student's teacher if you have any questions or concerns.