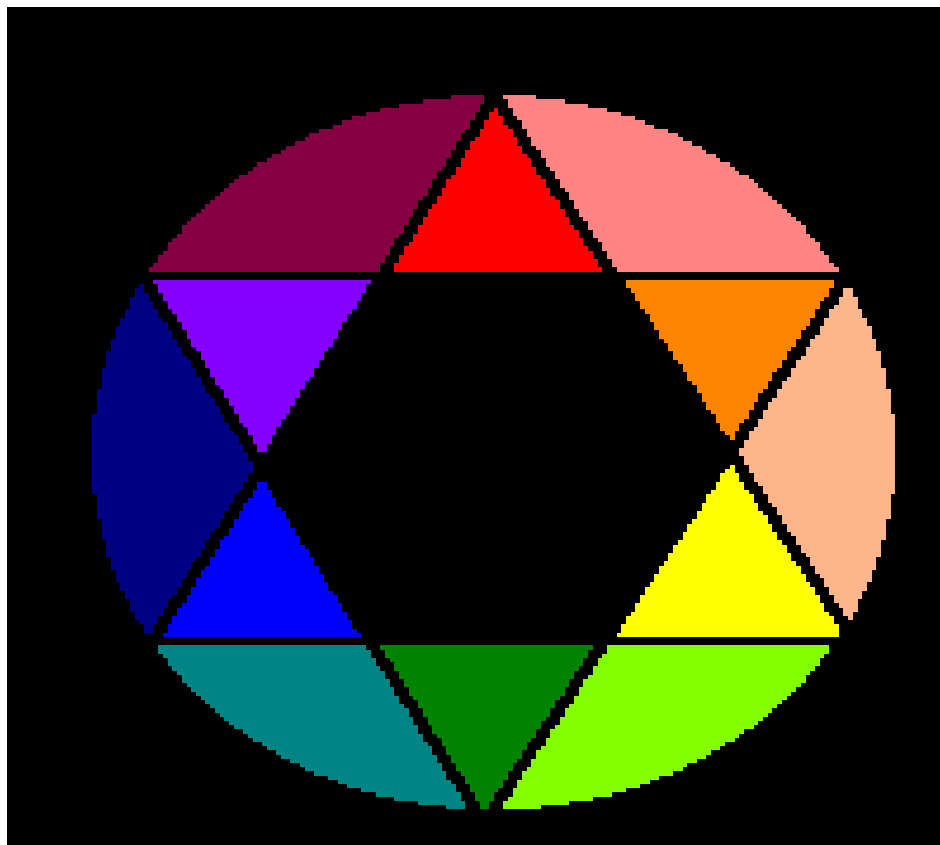


# Color Theory



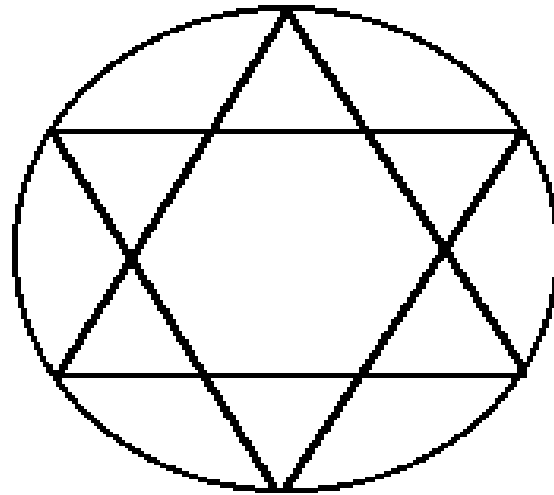
# Color Theory

Color Wheel

Color Values

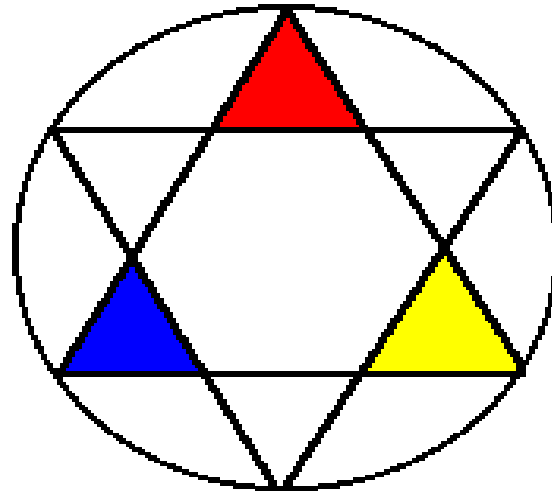
Color Schemes

# The Color Wheel



# *Primary Colors*

- Red
- Yellow
- Blue

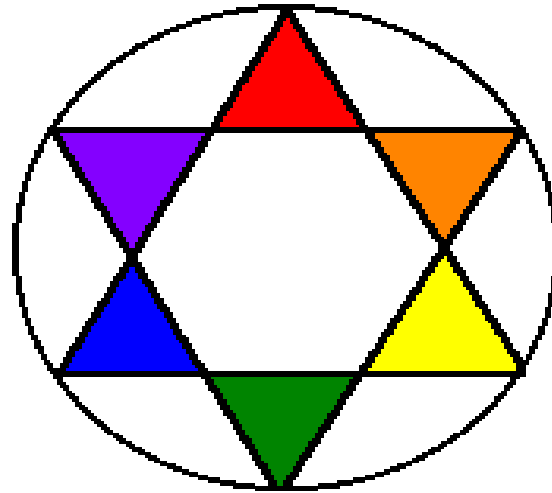


# Secondary Colors

Yellow + Red = Orange

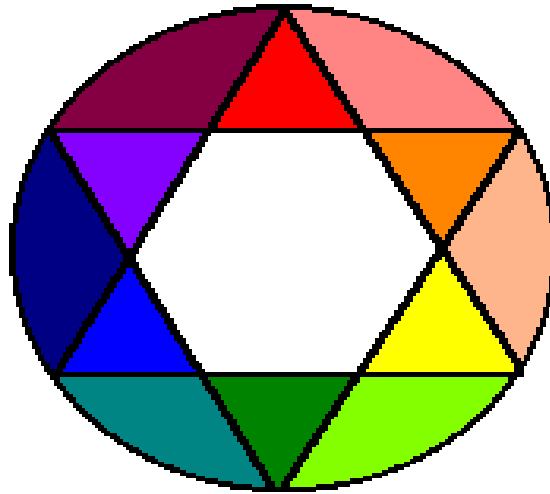
Yellow + Blue = Green

Red + Blue = Purple



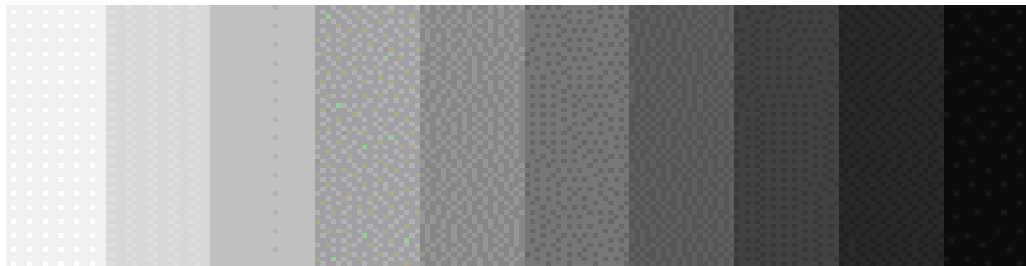
# *Intermediate Colors*

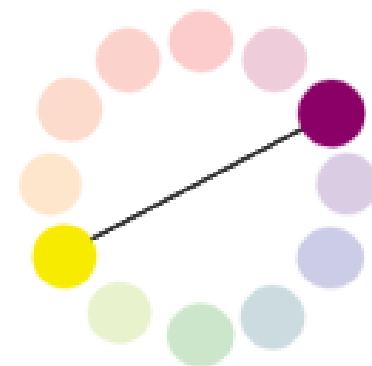
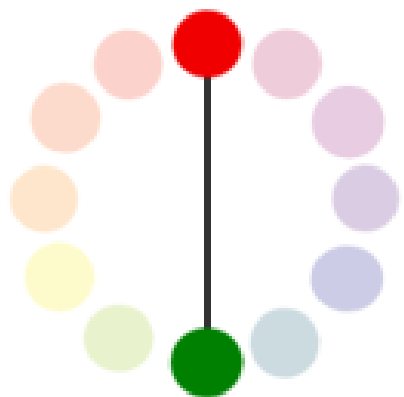
- red-orange
- yellow-orange
- yellow-green



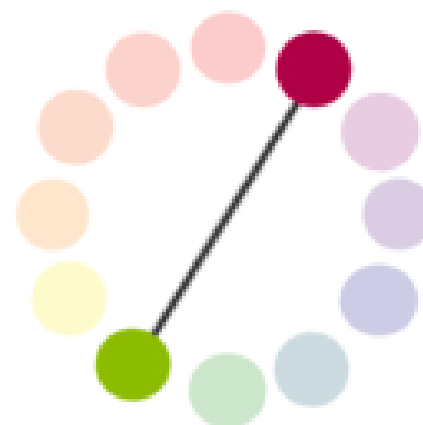
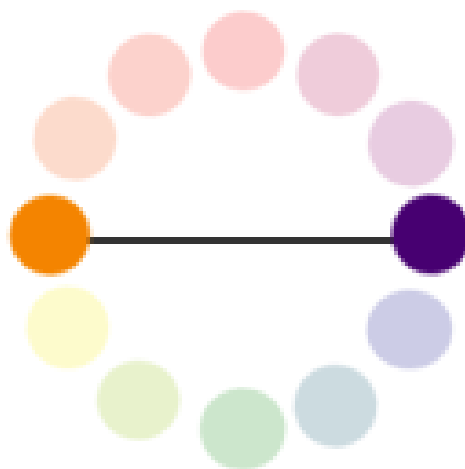
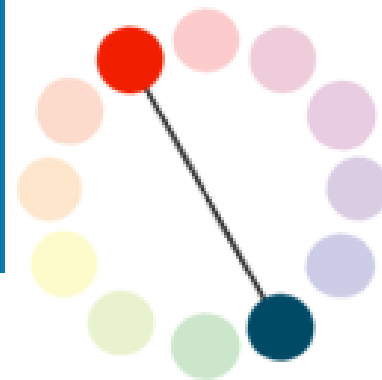
- blue-green
- blue-purple
- red-purple

# *Neutral Colors*





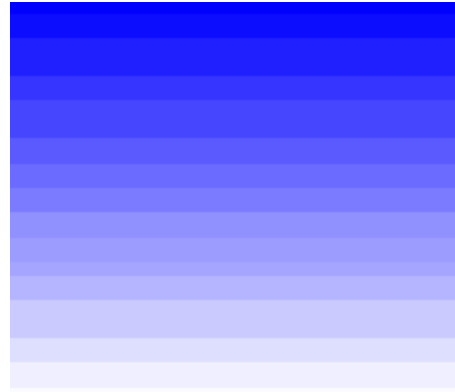
50 create dark neurons.





# Color Values

*Tints*



*Shades*



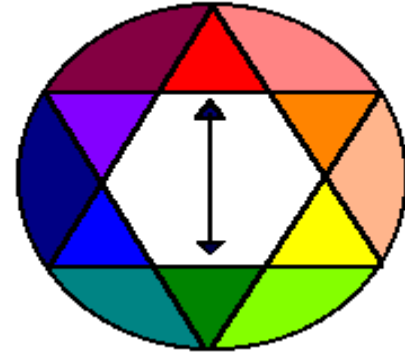
# Color Schemes

**monochromatic, complementary,  
analogous, warm      cool.**

*Monochromatic*



# Complementary





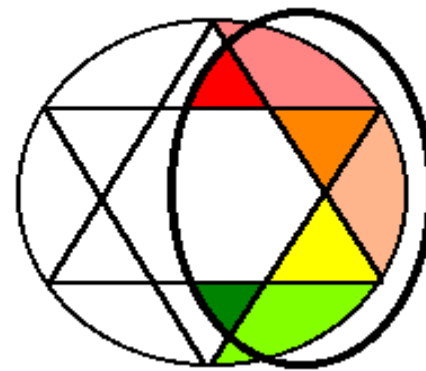


# Analogous



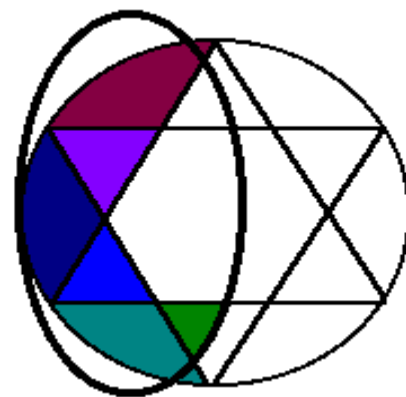


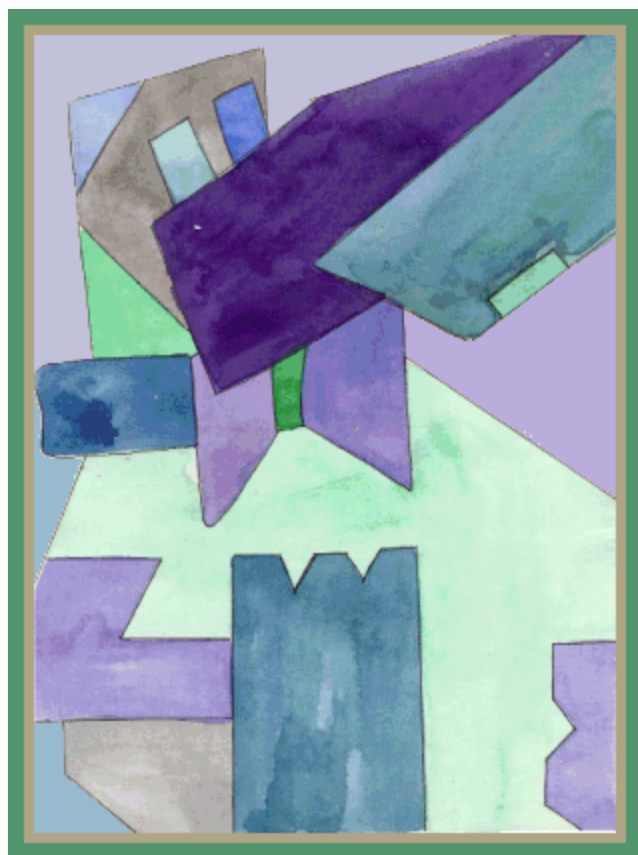
*Warm*





*Cool*

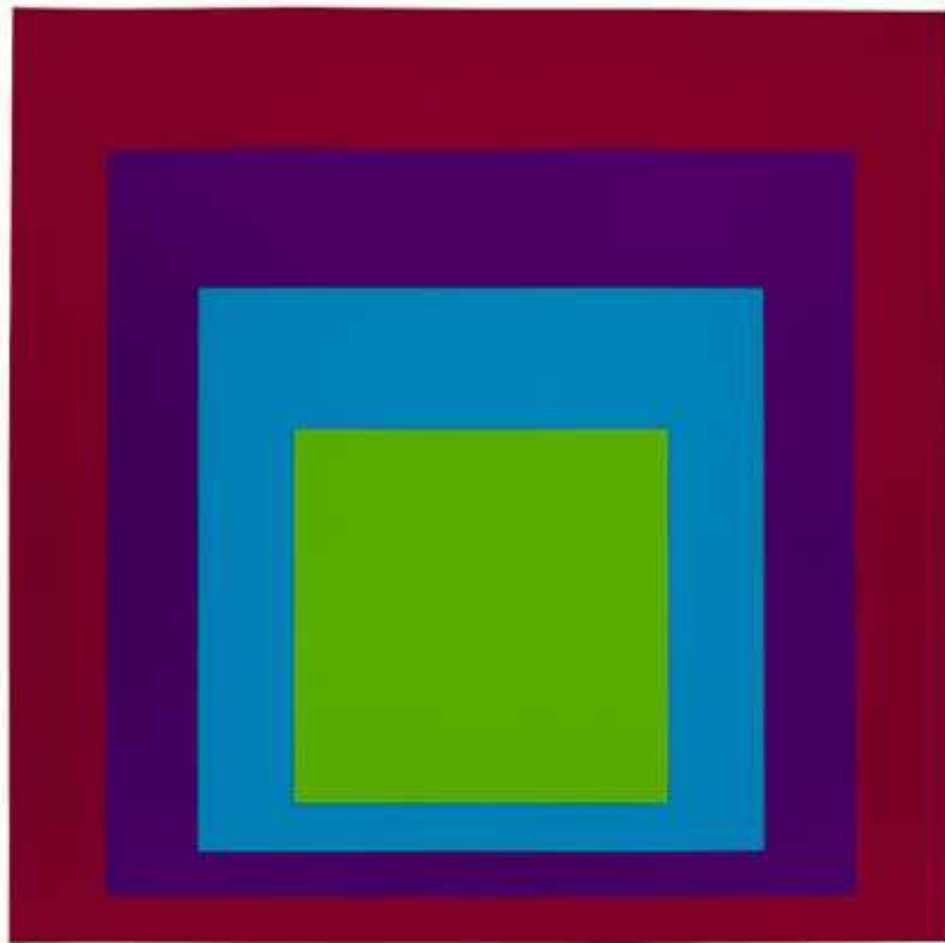




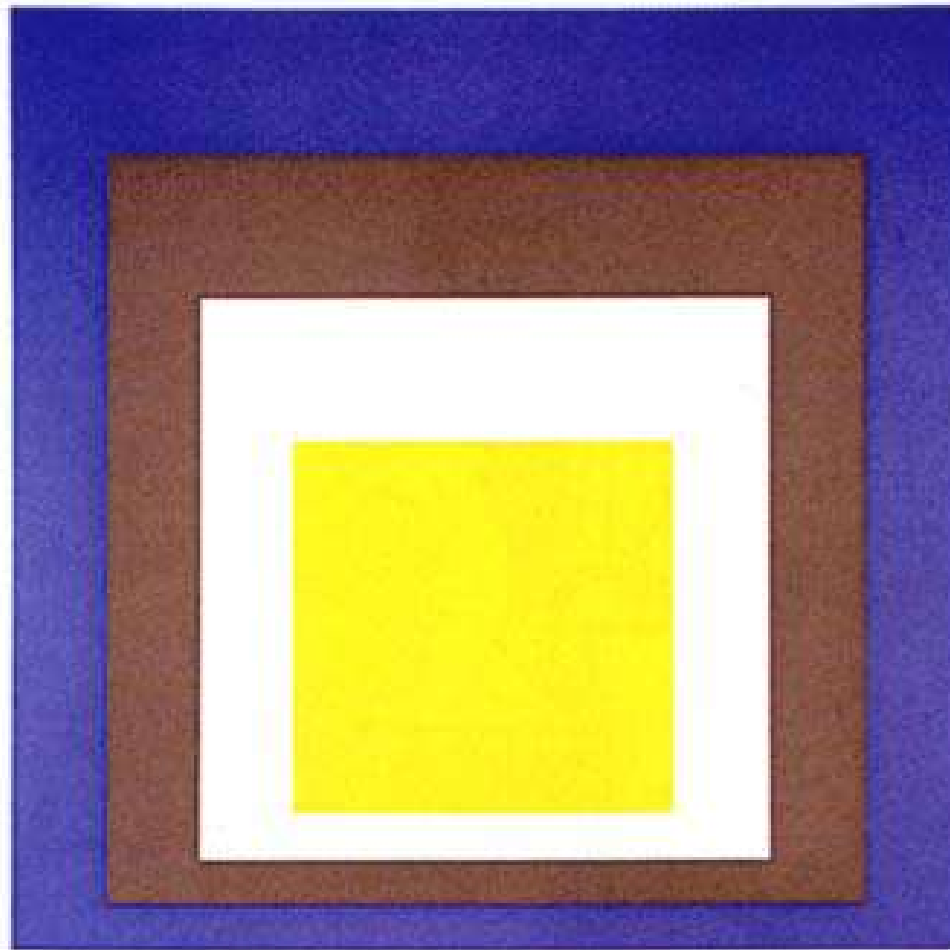
Th There are many artist who use  
color as their main visual element...



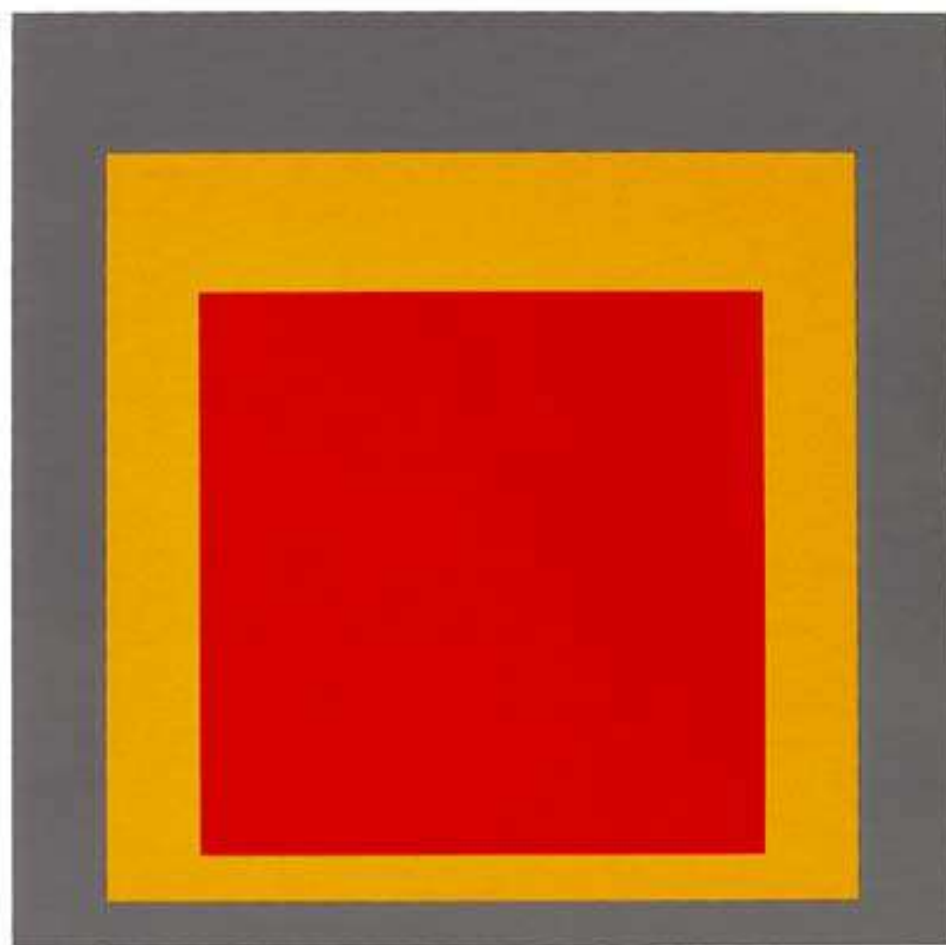
J







WHITNEY MUSEUM  
OF AMERICAN ART

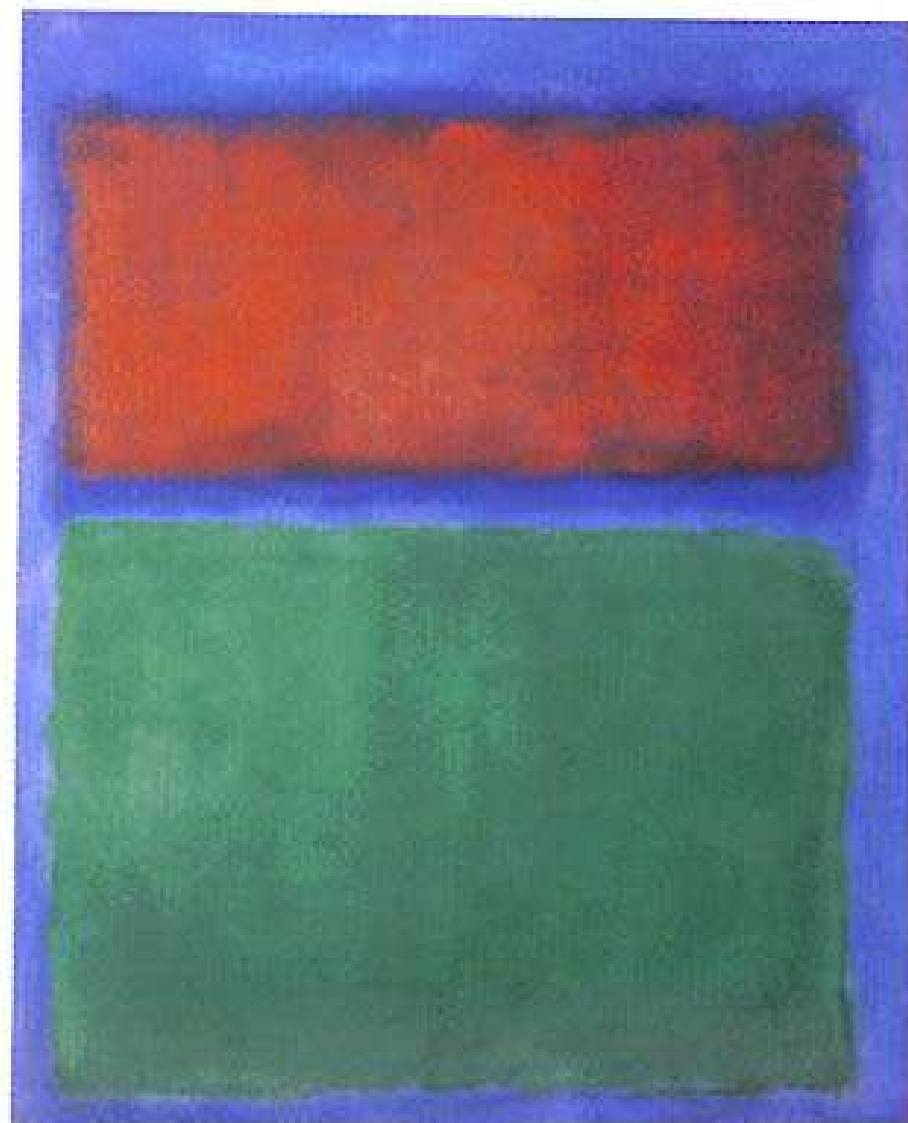




JOSEF ALBERS HOMAGE TO THE SQUARE



MARK ROTHKO  
"BLUE, ORANGE, RED" 1961





MARK ROTHKO  
'UNTITLED (GREEN, RED ON ORANGE)', 1951

# Let's Review

red blue yellow

orange green purple

red-orange

red-purple

yellow-orange

yellow-green

blue-green

blue-purple

Cool,  
Neutral, and shades of the original colors

Bright  
Warm and

Cool colors are in the blue family

Warm colors are in the yellow and red family



Red's compliment is Green

Yellow's compliment is Purple

Blue's compliment is Orange

This is a neutral **Blue**

This is a neutral **Green** , This is a neutral Orange,

This is a neutral Red, This is a neutral Yellow

darker pigment = correct color mixing  
technique

tertiary

secondary

primary,