

# National Board Certification

Components 2 - 4

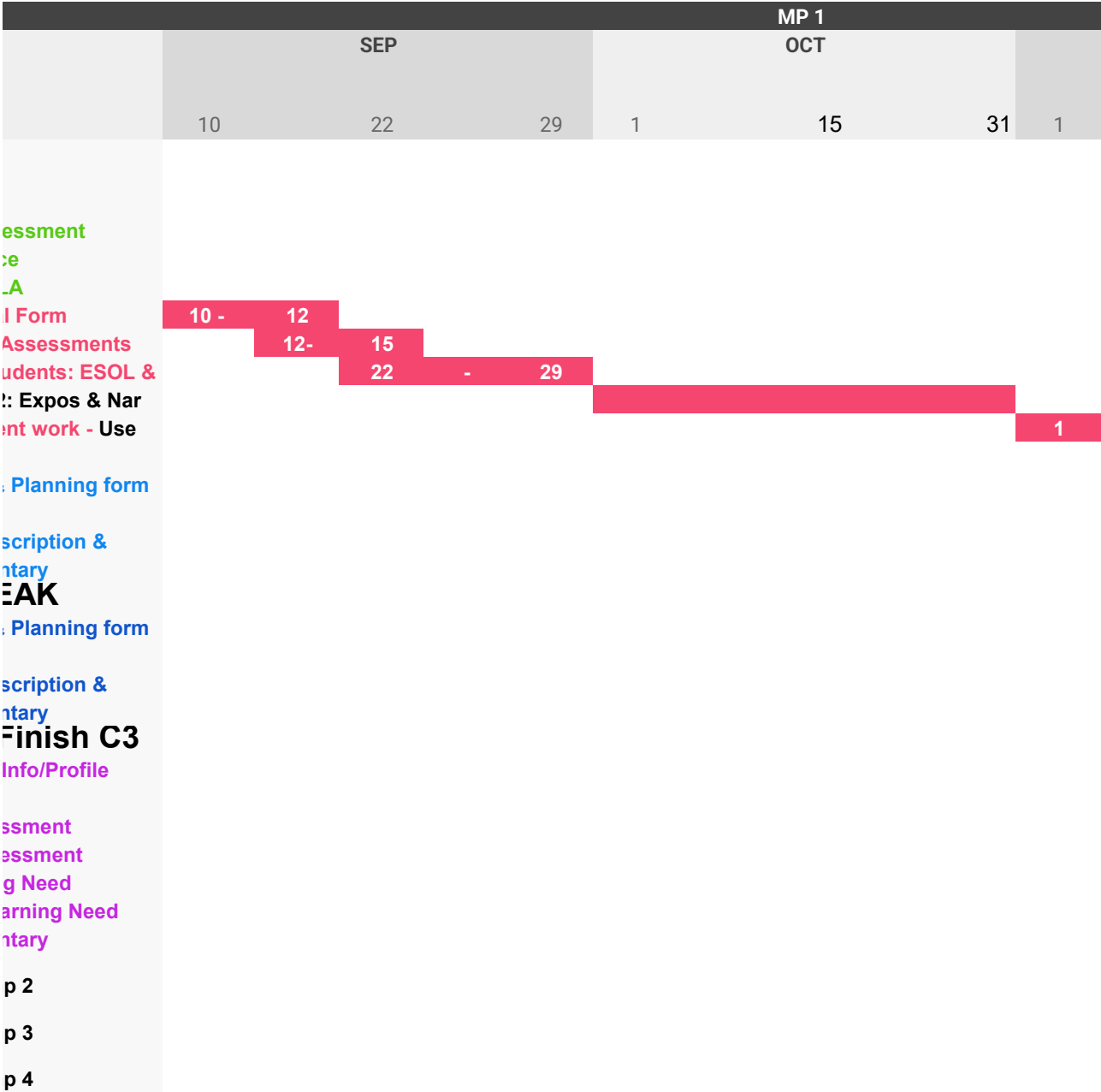
**\*\*Check NBCT for Due Dates**

[Approved student releases](#)

PHASE		DETAILS
1	Component One (30%)	Register for assessment Study SS/Science Study Math & ELA
2	Component Two (15%)	Write Contextual Administer Pre-Test Select Focus Student Teach Unit 1 & 2 Reflect on student learning Reflect/Write
3	Component Three (30%)	Context Sheet & Video 1 Instructional design Written Communication <b>BRE</b>
4	Component Four (15%)	Context Sheet & Video 2 Instructional design Written Communication <b>BREAK/ I</b>
5	Final Submissions	Context, Group Learning Knowledge of Formative Assessment Summative Assessment Student Learning Professional Learning Written Communication

[MCPS Calendar 2021-2022](#)

# Timeline



MONTHS						
NOV		DEC			JAN	
15	30	1	15	31	1	15

The diagram illustrates a sequence of subtraction steps arranged in a descending staircase pattern. The steps are represented by blue rectangles, and the sequence is interrupted by two grey rectangles labeled "BREAK!".

- Step 1:  $- 15$
- Step 2: **BREAK!**
- Step 3:  $1 - 15$
- Step 4:  $15 - 21$
- Step 5:  $15 - 21$
- Step 6:  $27 - 7$
- Step 7: **BREAK!**
- Step 8:  $1 - 15$
- Step 9:  $15 - 21$
- Step 10:  $15 - 21$
- Step 11:  $27$

MP 2					
FEB					
31	1	15	28	1	

BREAK!

-	15				
BREAK!					
100%					
8					
8	-	27			
	?	?	?	?	?
				8	-

MP 3			
MAR	APR		
15	31	1	15

Scope and Goal Setting

Scope and Goal S

?									
27							Final		
8	-	27	1	-	15				

MAY				
30	1	15	31	1

Setting

alize

MP 4			
JUN			JUL
15	30	1	15

		AUG	
31	1	15	31



NBCT Component 2 Guidelines  
 NBCT Component 2 at a glance  
 NBCT Scoring Rubric  
 NBCT MC Gen Standards

## [Timeline](#)

Part A	<i>completed</i>	pg limit	Approx Length
2 files, no more than 13 pages			
Contextual Information Sheet form	YANLIŞ	<1 page	
Written Commentary (do @ the end)	YANLIŞ	<12 pages	
Marked as ready to submit	YANLIŞ		
Part B: Assignments & Prompts	<i>completed</i>	pg limit	Approx Length
2 files, no more than 6 pages			1 pack for e
Assignment/Prompt #1 packet merge	YANLIŞ	3 pages	
Assignment/Prompt #1 form	YANLIŞ		
#1 expository writing assignment/prompt	YANLIŞ	1.5 pg	
Instructional supporting materials	YANLIŞ	1.5 pg	
Assignment/Prompt #2 packet merge	YANLIŞ	3 pages	
Assignment/Prompt #2 form	YANLIŞ		
#2 expository writing assignment/prompt (	YANLIŞ	1.5 pg	
Instructional supporting materials	YANLIŞ	1.5 pg	

## Part C: Student Response

*completed*

pg limit

Approx  
Length

2 files, no more than 10 pages

**FORMS DO NOT**

Student 1	YANLIŞ	
Assignment/Prompt #1 form	YANLIŞ	1pg
Assignment/Prompt #1	YANLIŞ	1pg
Student 2	YANLIŞ	
Assignment/Prompt #1 form	YANLIŞ	1pg
Assignment/Prompt #1	YANLIŞ	1pg

1 files, no more than 10 pages

**FORMS DO NOT**

Student 1	YANLIŞ	
Assignment/Prompt #2 form	YANLIŞ	3 pages
Assignment/Prompt #2	YANLIŞ	4 pages
Student 2	YANLIŞ	2 pages
Assignment/Prompt #2 form	YANLIŞ	3 pages
Assignment/Prompt #2	YANLIŞ	4 pages

Formatting	Draft link	Compressed Video Link	Uploaded to NBCT
------------	------------	-----------------------	------------------

Formatting	Draft link	Compressed Video Link	Uploaded to NBCT
------------	------------	-----------------------	------------------

each assignment/prompt

YANLIŞ

YANLIŞ

Single spaced,  
Arial 11 pt font  
Double spaced,  
arial 11 font, 1in  
margins

YANLIŞ

YANLIŞ

YANLIŞ

Single spaced,  
Arial 11 pt font

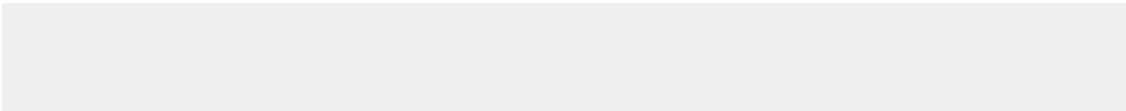
YANLIŞ

\*\*FORMS do NOT count toward

YANLIŞ

Double spaced,  
arial 11 font, 1in  
margins

YANLIŞ



Formatting

Draft link

Video Link

Uploaded  
to NBCT

**OT COUNT TOWARD TOTAL!**

---

YANLIŞ

\* 2 students, 2 student responses

Single spaced,

YANLIŞ

Arial 11 pt font

YANLIŞ

YANLIŞ

\* 2 students, 2 student responses

Single spaced,

YANLIŞ

Arial 11 pt font

YANLIŞ

---

**OT COUNT TOWARD TOTAL!**

---

YANLIŞ

Double spaced,

YANLIŞ

arial 11 font, 1in

YANLIŞ

margins

YANLIŞ

Double spaced,

YANLIŞ

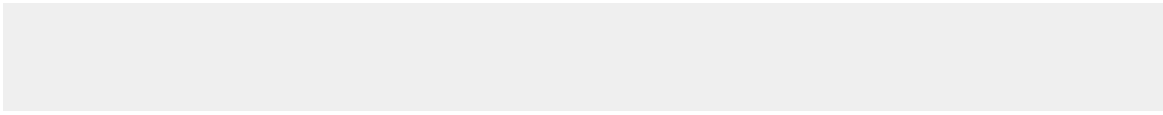
arial 11 font, 1in

YANLIŞ

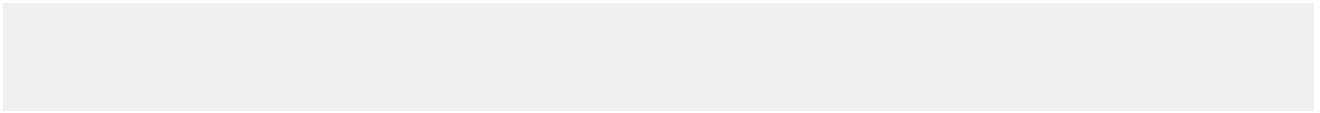
margins

Component 2  
6 files total  
Submitted #####

1 total







--

--



NBCI Component 3 Guidelines  
 NBCI Component 3 at a glance  
 NBCI Scoring Rubric  
 NBCI MC Gen Standards

Part A	completed
Introduction to Entry Form	YANLIŞ
Uploaded	YANLIŞ
Marked as ready to submit	YANLIŞ

Part B	completed	pg limit	Length
--------	-----------	----------	--------

Video 1	YANLIŞ		
Context sheet	YANLIŞ	1pg	
Planning Form	YANLIŞ	1pg	
Instructional description	YANLIŞ	2 pages	
Intrustional Materials	YANLIŞ	3 pages	
Written Commentary	YANLIŞ	4 pages	

Part C	completed	pg limit	Length
--------	-----------	----------	--------

Video 2	YANLIŞ		
Context sheet	YANLIŞ	1pg	
Planning Form	YANLIŞ	1pg	
Instructional description	YANLIŞ	2 pages	
Intrustional Materials	YANLIŞ	3 pages	
Written Commentary	YANLIŞ	4 pages	



Formatting      Draft link      a video      *Uploaded*

Single spaced,			YANLIŞ
Arial 11 pt font			YANLIŞ
Double spaced,			YANLIŞ
arial 11 font, 1in			YANLIŞ
margins			YANLIŞ



Formatting      Draft link      video LINK      *Uploaded*

Single spaced,			YANLIŞ
Arial 11 pt font			YANLIŞ
Double spaced,			YANLIŞ
arial 11 font, 1in			YANLIŞ
margins			YANLIŞ

Component's units total submitted	TANLIS
---	--------



NBCI Component 4 Guidelines  
 NBCI Component 4 at a glance  
 NBCI Scoring Rubric  
 NBCI MC Gen Standards

Part A. Contextual	completed	pg limit
1 file, no more than 1 page		
Contextual Information Sheet	YANLIŞ	<1 page
Uploaded	YANLIŞ	
Marked as ready to submit	YANLIŞ	

Part B - Knowledge of	completed	pg limit
no more than 4 pages		
Group Information & Profile form	YANLIŞ	2pgs
Knowledge of Students	YANLIŞ	1pg
Evidence	YANLIŞ	1pg
Merged File	YANLIŞ	2 pages
Marked as ready to Upload	YANLIŞ	3 pages
	YANLIŞ	

Part C - Generation & Use	completed	pg limit
3 files - no more than 15 page		

#### FORMATIVE ASSESMENT

Instruction Content form	YANLIŞ	<1pg
Formative Assessment Materials for	YANLIŞ	<2pgs
Formative Assessment	YANLIŞ	<2pgs
Data from Formative Assessment	YANLIŞ	2 pages
3 student ex of self-assessment	YANLIŞ	<3pages
Formative assessment file (merged	YANLIŞ	

#### SUMMATIVE ASSESMENT

Summative Assessment Materials for	YANLIŞ	<2pgs
Summative Assessment	YANLIŞ	<2pgs
Data from Summative Assessment	YANLIŞ	2 pages
Summative assessment file (merged	YANLIŞ	

Part D. Participating in	completed	pg limit
2 files, no more than 6		

Professional learning need form	YANLIŞ	<1pg
Professional learning need Evidence	YANLIŞ	<2pgs
Prof learning need forms merged	YANLIŞ	

Student need form	YANLIŞ	2 pages
Student need evidence	YANLIŞ	<3pages
Student need forms merged	YANLIŞ	

Part C. Written

1 file, NO more than 12 pages  
written commentary edited  
written commentary uploaded  
marked as ready to submit

completed

pg limit

<12pages

YANLIŞ  
YANLIŞ  
YANLIŞ

--	--	--	--	--

Length	Formatting	Draft link	a video	Uploaded
				YANLIŞ
	Single spaced,			YANLIŞ
	Arial 11 pt font			YANLIŞ
	Double spaced,			YANLIŞ
	arial 11 font, 1in			YANLIŞ
	margins			

Length	Formatting	Draft link	video Link	Uploaded
--------	------------	------------	------------	----------

asd (combined)

				YANLIŞ
	Single spaced,			YANLIŞ
	Arial 11 pt font			YANLIŞ
	Double spaced,			YANLIŞ
	arial 11 font, 1in			YANLIŞ
	margins			YANLIŞ
	Single spaced,			YANLIŞ
	Arial 11 pt font			YANLIŞ
	Double spaced,			YANLIŞ
	arial 11 font, 1in			

Length	Formatting	Draft link	video Link	Uploaded
--------	------------	------------	------------	----------

5 pages

				YANLIŞ
	Single spaced,			YANLIŞ
	Arial 11 pt font			YANLIŞ
	Double spaced,			YANLIŞ
	arial 11 font, 1in			YANLIŞ
	margins			YANLIŞ

--	--	--	--	--

Length

Formatting

Draft link

*Uploaded*

11 point arial  
font

#####



Component 2	
0 files total	
submitted	TABLES

--

--

--

--





[illegible]

