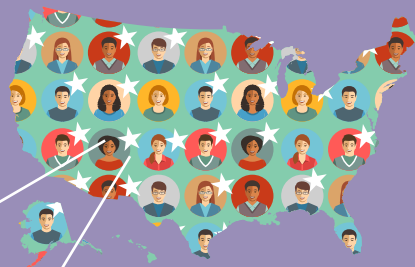
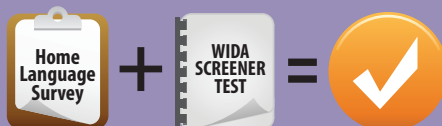


My Child is an ELL: A Parent's Guide

There are
4.6 MILLION
English language
learners in the U.S.



How was my
child identified?



Your child qualified for English
language support services

Talk to your child's educators about how they can help
your child learn English and succeed in school. As a parent,
you have the right to accept, decline, or request language
program support.

**WIDA Screener measures
English language proficiency**

**1.0
BEGINNER**

Students score between 1.0
and 6.0 in listening, speaking,
reading, and writing.

**6.0
ADVANCED**

DOMAINS



OVERALL SCREENER SCORE

Need Additional Information?

Watch our webinars for families of ELLs

Part 1 My child is an ELL, what does this mean?

[English](#) | [Spanish](#)

Part 2 How is my child's language development supported
at school? [English](#) | [Spanish](#)

Part 3 How do I know if my child is making progress?
[English](#) | [Spanish](#)

Data retrieved from [National Center for Education Statistics](https://nces.ed.gov/ipeds/data/ell/)



Questions? Contact the WIDA Client Services Center at help@wida.us or 1-866-276-7735

