

Name: _____

Which cell structures are most directly involved in protein synthesis?

- A) chloroplast and centriole
- B) endoplasmic reticulum and cell wall
- C) cell membrane and lysosome
- D) nucleus and ribosome

2) Which organelle contains hereditary factors and controls most cell activities?

- A) vacuole
- B) endoplasmic reticulum
- C) nucleus
- D) cell membrane

3) Centrioles are cell structures involved primarily in

- A) cell division
- B) enzyme production
- C) storage of fats
- D) cellular respiration

Which cell organelles are the sites of aerobic cellular respiration in both plant and animal cells?

- A) mitochondria
- B) nuclei
- C) centrosomes
- D) chloroplasts

5) Which structures are found in every living cell?

- A) centrioles and chromosomes
- B) a cell wall and nucleus
- C) chloroplasts and mitochondria
- D) a plasma membrane and cytoplasm

6) Which statement best describes the plasma membrane of a living plant cell?

- A) It is composed of proteins and carbohydrates only.
- B) It has the same permeability to all substances found inside or outside the cell.
- C) It selectively regulates the passage of substances into and out of the cell.
- D) It is a double protein layer with floating lipid molecules.

7) Microscopic examination of an animal cell reveals the presence of a plasma membrane but no cell wall. Which additional structures would normally be present within this cell?

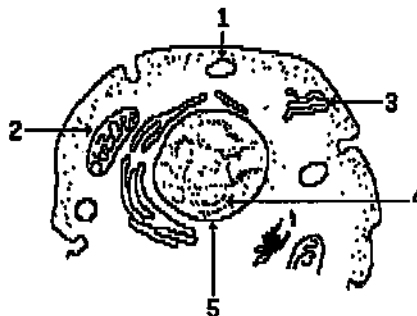
- A) large vacuoles
- B) chloroplasts
- C) centrioles
- D) starch grains

8) Which organelle is present in the cells of a mouse but *not* present in the cells of a bean plant?

- A) centriole
- B) cell membrane
- C) chloroplast
- D) cell wall

Questions 9 and 10 refer to the following:

The diagram below represents a portion of a cell.



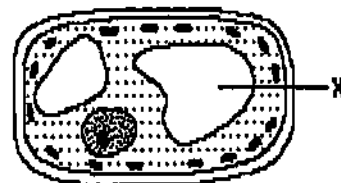
9) In which organelle would water and dissolved materials be stored?

- A) 5
- B) 3
- C) 1
- D) 2

10) Most of the enzymes involved in aerobic cellular respiration are located in the organelle labeled

- A) 3
- B) 1
- C) 2
- D) 4

11) In the diagram of a cell below, the structure labeled X enables the cell to

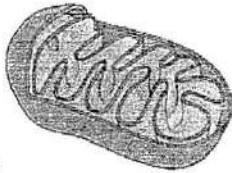


- A) manufacture proteins
- B) control nuclear division
- C) release energy
- D) store waste products

1. What part of the cell is responsible for breaking down & digesting things?

- ☐ ribosomes
- ☐ lysosomes
- ☐ endoplasmic reticulum
- ☐ vacuole

2. Identify the organelle pictured.



- ☐ chloroplast
- ☐ endoplasmic reticulum
- ☐ golgi apparatus
- ☐ mitochondria

3. What part of the cell serves as the intracellular highway?

- ☐ endoplasmic reticulum
- ☐ golgi apparatus
- ☐ cell membrane
- ☐ mitochondria

4. Which of the following would you NOT find in a bacterial cell?

- ☐ DNA
- ☐ cell membrane
- ☐ golgi apparatus
- ☐ ribosomes

5. Which of the following is found in plant cells, but not animal cells?

- ☐ cell wall
- ☐ vacuole
- ☐ mitochondria
- ☐ endoplasmic reticulum

6. The jellylike interior of the cell is called the:

- ☐ vacuole
- ☐ cytoplasm
- ☐ cytoskeleton
- ☐ nucleus

7. Identify the organelle.



- ☐ golgi apparatus
- ☐ endoplasmic reticulum
- ☐ mitochondria
- ☐ lysosome

8. What part of the cell makes proteins?

- ☐ ribosomes
- ☐ mitochondria
- ☐ lysosomes
- ☐ vacuole

9. Where are ribosomes usually located in animal and plant cells?

- ☐ inside the nucleus
- ☐ near the cell membrane
- ☐ on the endoplasmic reticulum
- ☐ inside the vacuole

10. What part of the cell serves to process, package and export proteins?

- ☐ mitochondria
- ☐ endoplasmic reticulum
- ☐ nucleolus
- ☐ golgi apparatus

Name: Key

Which cell structures are most directly involved in protein synthesis?

- A) chloroplast and centriole
- B) endoplasmic reticulum and cell wall
- C) cell membrane and lysosome
- ☒ D) nucleus and ribosome

2) Which organelle contains hereditary factors and controls most cell activities?

- A) vacuole
- B) endoplasmic reticulum
- ☒ C) nucleus
- D) cell membrane

3) Centrioles are cell structures involved primarily in

- ☒ A) cell division
- B) enzyme production
- C) storage of fats
- D) cellular respiration

Which cell organelles are the sites of aerobic cellular respiration in both plant and animal cells?

- ☒ A) mitochondria
- B) nuclei
- C) centrosomes
- D) chloroplasts

5) Which structures are found in every living cell?

- A) centrioles and chromosomes
- B) a cell wall and nucleus
- C) chloroplasts and mitochondria
- ☒ D) a plasma membrane and cytoplasm

6) Which statement best describes the ^(cell)plasma membrane of a living plant cell?

- A) It is composed of proteins and carbohydrates only.
- B) It has the same permeability to all substances found inside or outside the cell.
- ☒ C) It selectively regulates the passage of substances into and out of the cell.
- D) It is a double protein layer with floating lipid molecules.

7) Microscopic examination of an animal cell reveals the presence of a plasma membrane but no cell wall. Which additional structures would normally be present within this cell?

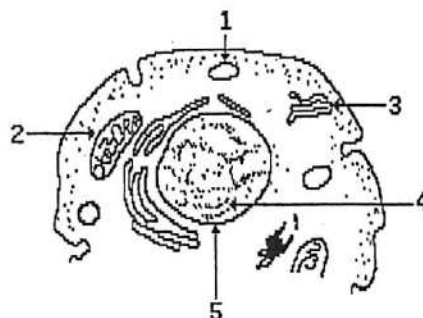
- A) large vacuoles
- B) chloroplasts
- ☒ C) centrioles
- D) starch grains

8) Which organelle is present in the cells of a mouse but not present in the cells of a bean plant?

- ☒ A) centriole
- B) cell membrane
- C) chloroplast
- D) cell wall

Questions 9 and 10 refer to the following:

The diagram below represents a portion of a cell.



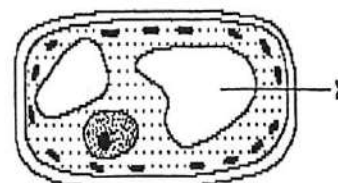
9) In which organelle would water and dissolved materials be stored?

- A) 5
- B) 3
- ☒ C) 1
- D) 2

10) Most of the enzymes involved in aerobic cellular respiration are located in the organelle labeled

- A) 3
- B) 1
- ☒ C) 2
- D) 4

11) In the diagram of a cell below, the structure labeled X enables the cell to



- A) manufacture proteins
- B) control nuclear division
- C) release energy
- ☒ D) store waste products

1/27

—



—

—



(11/10)



—



Key

1. What part of the cell is responsible for breaking down & digesting things?

- ☐ ribosomes
- ☒ lysosomes
- ☐ endoplasmic reticulum
- ☐ vacuole

2. Identify the organelle pictured.



- ☐ chloroplast
- ☐ endoplasmic reticulum
- ☐ golgi apparatus
- ☒ mitochondria

3. What part of the cell serves as the intracellular highway?

- ☒ endoplasmic reticulum
- ☐ golgi apparatus
- ☐ cell membrane
- ☐ mitochondria

4. Which of the following would you NOT find in a bacterial cell?

- ☐ DNA
- ☐ cell membrane
- ☒ golgi apparatus
- ☐ ribosomes

Prokaryotic

5. Which of the following is found in plant cells, but not animal cells?

- ☒ cell wall
- ☐ vacuole
- ☐ mitochondria
- ☐ endoplasmic reticulum

6. The jellylike interior of the cell is called the:

- ☐ vacuole
- ☒ cytoplasm
- ☐ cytoskeleton
- ☐ nucleus

7. Identify the organelle.



- ☐ golgi apparatus
- ☒ endoplasmic reticulum
- ☐ mitochondria
- ☐ lysosome

8. What part of the cell makes proteins?

- ☒ ribosomes
- ☐ mitochondria
- ☐ lysosomes
- ☐ vacuole

9. Where are ribosomes usually located in animal and plant cells?

- ☐ inside the nucleus
- ☐ near the cell membrane
- ☒ on the endoplasmic reticulum
- ☐ inside the vacuole

≠ cytoplasm

10. What part of the cell serves to process, package and export proteins?

- ☐ mitochondria
- ☐ endoplasmic reticulum
- ☐ nucleolus
- ☒ golgi apparatus