

## SEVENTH GRADE GENERAL MUSIC CLASS

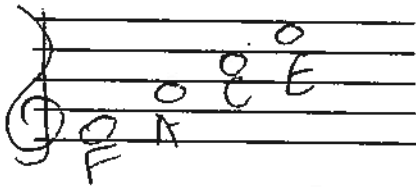
HI GUYS! My favorite kind of music is, well, everything and anything musical-yes-even Rap/Hip Hop! This is because I love humanity, different ethnicities, and diversity in general. What reflects this better than the many different genres of music? That being said, let's hit the pause button on the assignment I sent you home with last month. I know some have limited access to internet, which makes it unfair to you as you try to do this major research project. I am missing being able to be in class with you so much, and am so looking forward to when we can be together again! We will pick up where we left off then. In the meantime, you will notice that my assignment for you is very simple, and pretty much read and copy. This is because music is a different language, and in order to teach it and experience it without a teacher or the modern day help of technology, we need to do many things together. This assignment is just the tools for our toolbox. So....Here we go! Please look at the two pages I have completed for you, and then make your own copy. Also please notice any side notes I have entered. In the meantime, please stay happy, healthy, and above all else, don't stress! Get outside and take a walk, climb a tree, put on a lifejacket and take the canoe or kayak out, get those old dusty roller blades (if they still fit!), sit out on the patio in the sun with a treat while doing your homework, take the dog for a walk, sing, play your instrument, and listen to your favorite music! :)

Here you go! Basically, please just transfer the information from here the the empty worksheet provided.

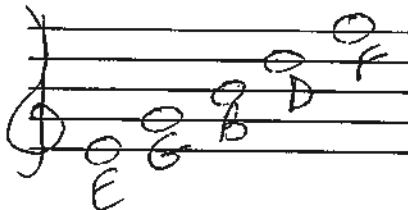
The musical alphabet is:

The treble clef is derived from the letter G. Therefore, its other name is the G Clef.

The Treble Clef spaces are: F A C E

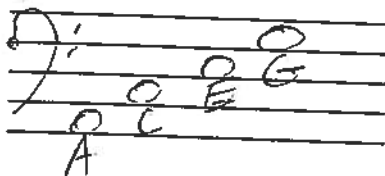


The Treble Clef lines are: E G B D F

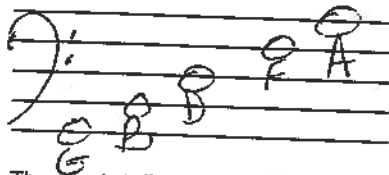


The Bass Clef is derived from the letter F. Therefore, its other name is the F Clef.

Bass Clef spaces are A C E G



Bass Clef Lines are: G B D F A

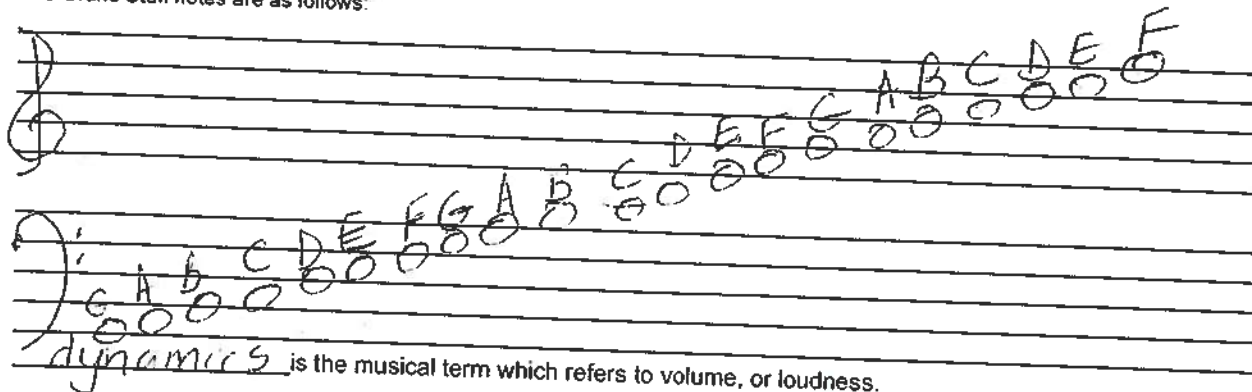


The grand staff notes begin in the bass clef with the lowest line note, which is a G

The middle C is known as such, because it falls directly in the middle  
The bass clef and the treble clef.

When the two staves are connected with a line and brace, they are collectively known as the grand staff

The Grand Staff notes are as follows:



The following terms are commonly used to denote loudness or softness in music.

Italian term	English Translation	Symbol
Forte	loud	<u>f</u>
Mezzo Forte	medium loud	<u>mf</u>
Fortissimo	very loud	<u>ff</u>
Piano	soft	<u>p</u>
Mezzo Piano	medium soft	<u>mp</u>
Pianissimo	very soft	<u>pp</u>
Crescendo	get louder	<u>&gt;</u>
Diminuendo	get softer	<u>&lt;</u>
Accent	emph	<u>&gt;</u>

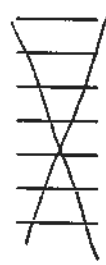
tempo is the musical term referring to rate of speed.

The following terms are commonly used to denote how fast or slow a piece is played or sung:

Italian Term	English Translation	Symbol
--------------	---------------------	--------

Allegro  
Adagio  
Andante  
Presto  
Largo  
Accelerando  
Ritardando

fast  
slow  
walking speed  
Very fast  
very slow  
speed up  
slow down

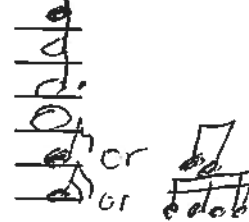


Rhythm is very important to music, and helps to create the mood of the piece, as well as making the music more interesting, both to hear and play. The following symbols are the most commonly used when denoting rhythm:

Note Type  
Quarter  
Half  
Dotted Half  
Whole  
Eighth  
Sixteenth

Note Duration  
1  
2  
3  
4  
1/2  
1/4

Symbol



The musical alphabet is:

The treble clef is derived from the letter \_\_\_\_\_. Therefore, its other name is the \_\_\_\_\_ Clef.

The Treble Clef spaces are: \_\_\_\_\_



The Treble Clef lines are: \_\_\_\_\_



The Bass Clef is derived from the letter \_\_\_\_\_. Therefore, its other name is the \_\_\_\_\_ Clef.

Bass Clef spaces are \_\_\_\_\_



Bass Clef Lines are: \_\_\_\_\_

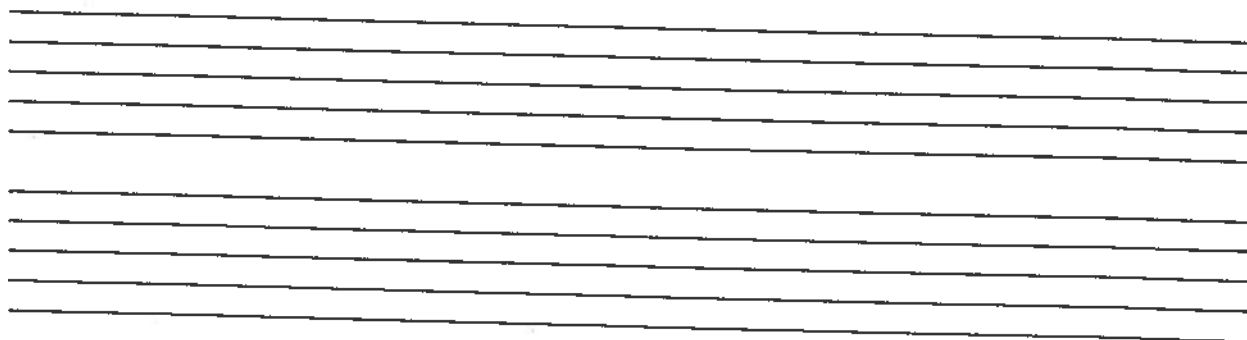
















The grand staff notes begin in the bass clef with the lowest line note, which is a \_\_\_\_\_

The middle \_\_\_\_\_ is known as such, because it falls directly \_\_\_\_\_  
The bass clef and the treble clef.













When the two staves are connected with a line and brace, they are collectively known as the \_\_\_\_\_

The Grand Staff notes are as follows:



Allegro		
Adagio		
Andante		
Presto		
Largo		
Accelerando		
Ritardando		

Rhythm is very important to music, and helps to create the mood of the piece, as well as making the music more interesting, both to hear and play. The following symbols are the most commonly used when denoting rhythm:

Note Type	Note Duration	Symbol
Quarter		
Half		
Dotted Half		
Whole		
Eighth		
Sixteenth		

Hello, HMS Choirs! I miss you all so much and hope you are all staying busy, healthy, and happy! Here is your important information for the spring quarter regarding choir grading. Your assignment is a reflection paper. Those doing the band/choir option will notice that Mrs. Burns and I are asking two very similar questions. Therefore, for questions one and two, those doing the band/choir option, please copy and paste from one to other. Then complete the rest. The school has gone to a Pass/Fail grading system for while we are away. If the reflection paper is completed well and turned in, you will receive a passing grade. If it is not, you will receive a failing grade. Please complete the one page typed or neatly hand-written document to be turned in with the rest of your packet by the due date set by the school district. Here are your questions:

1. Paragraph 1- The COVID19 pandemic has had a major impact on life as we know it. How have you noticed music affecting people through this time? (Look at social media or a morning news show to help you with this question.)
2. Paragraph 2- Music (singing/playing an instrument/listening/dancing) has a definite impact on the emotional state of humanity. How has music helped you through challenging times/situations?
3. Paragraph 3-Please share one positive memory from choir that you have had in the last one, two, or three years of your middle school experience. (Maybe it was at a concert, a rehearsal, or solo and ensemble, etc.) What made this memorable and why?
4. Paragraph 4- Please share your musical ambitions for next year [solo and ensemble, performing at church or events such as games (National Anthem), Pow-Wows, contests, dances, etc.] The possibilities are endless! :)

My school phone is 715-638-9425 and my school email is [kjones@hayward.k12.wi.us](mailto:kjones@hayward.k12.wi.us). I check both everyday, so please contact me with questions or concerns. Also, if you need the Google Classroom access codes they are:

6th Grade-xiawmce

7-8 Grade-iasztzu

I will put enrichment activities on these, so if you get the chance, check it out! Also, if you would like to get together with me for a voice lesson, send me a quick email so I can set up a Google Meet or Google Hangout with you. Take care, and stay healthy!

Winning the Day in a Musical Way,  
Mrs. Jones