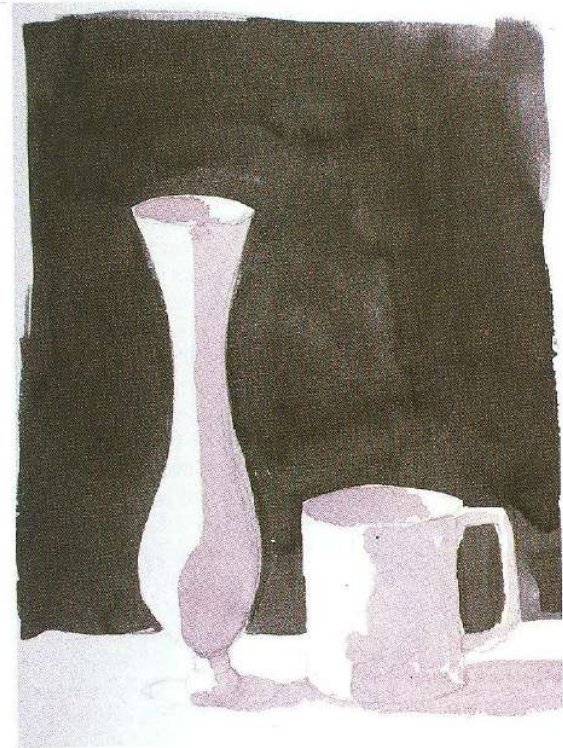


Movement of Grays

- On your practice paper create a series of grays from mixing complimentary colors. Take note of the colors you are using and which tones are lighter or darker. You may need to juggle the amounts to get it right and add additional colors to enhance the gray.

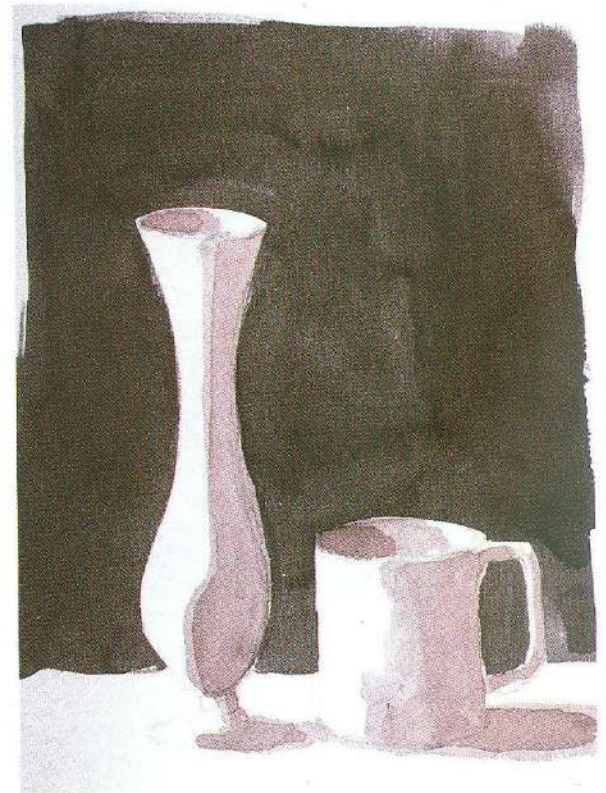
Layer #1 – light gray

- Mix a neutral gray and add water to make a light wash. Leave the Ground plane white except for the areas in shadow.



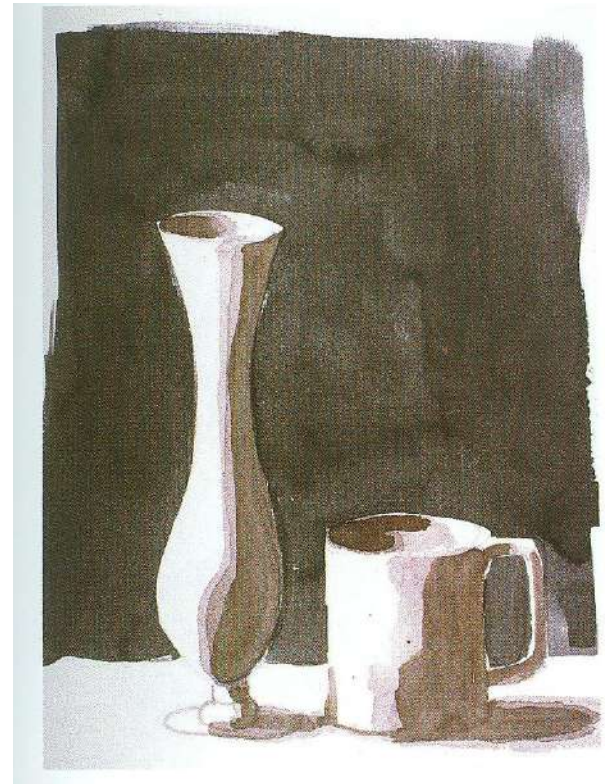
Layer #2

- Mix a slightly darker gray and use less water.
- Leave a trace of the previous color and begin to establish the next layer of value.
- If something goes wrong, blot quickly with a towel.



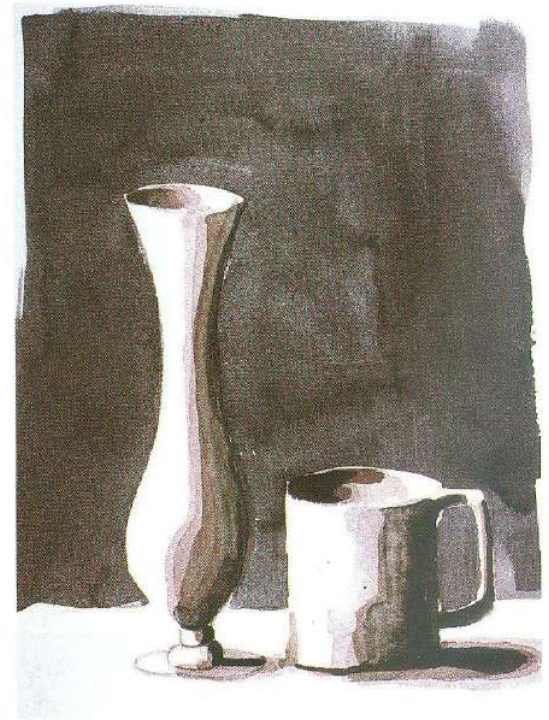
Layer #3

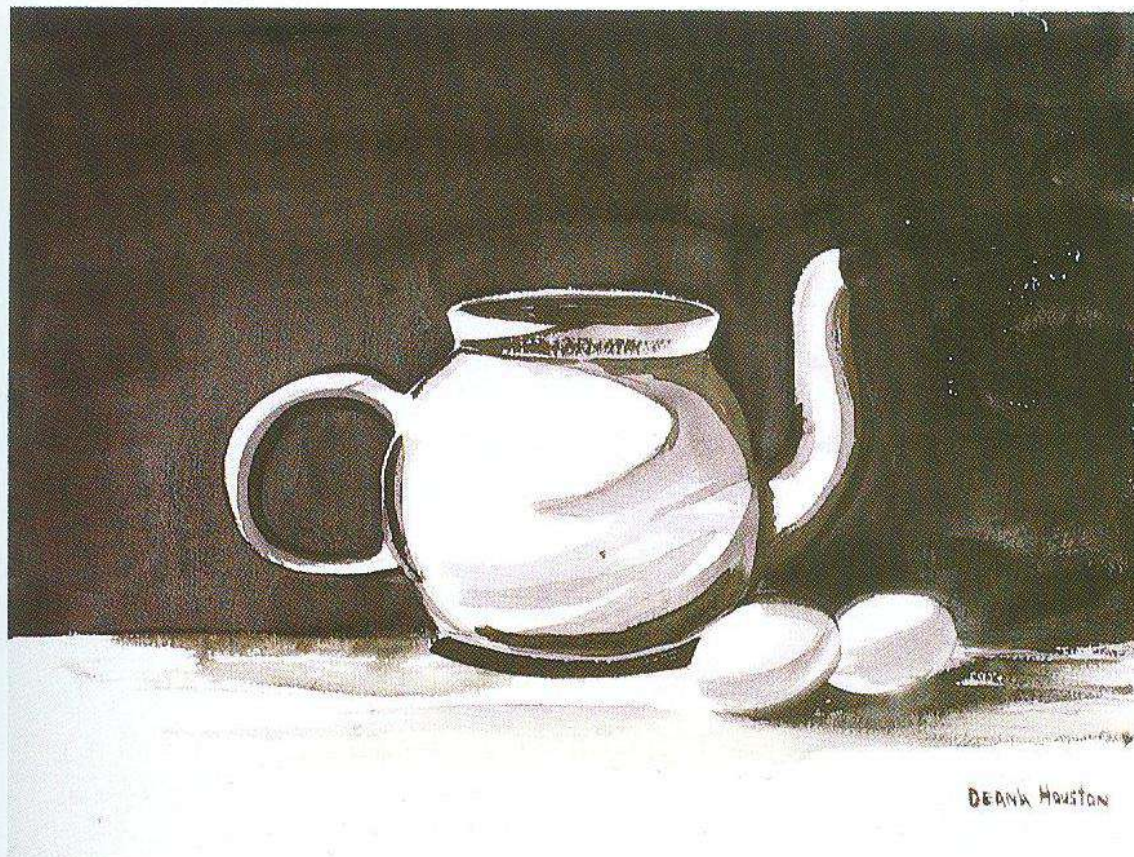
- Continue to add darker value in the same manner as before.
- You are establishing the volume of the form.



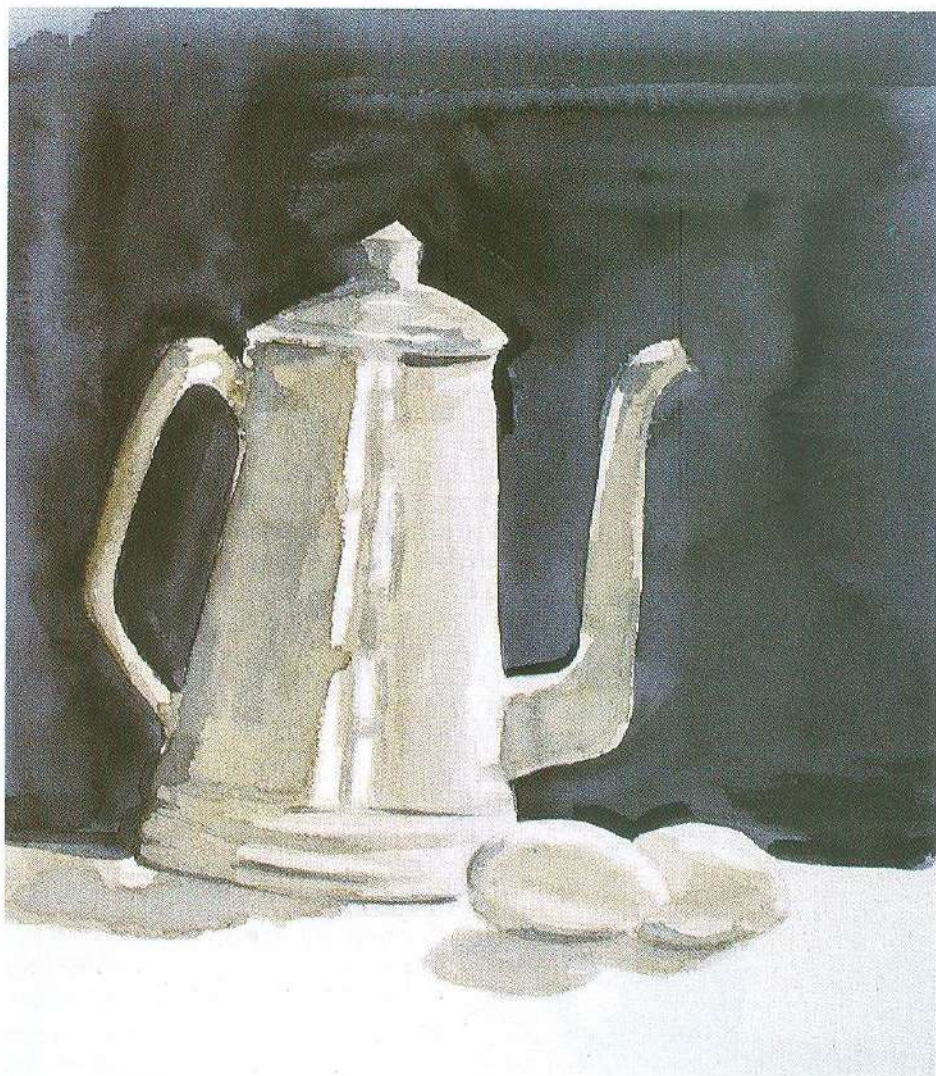
Layer #4

- Darkest values are added last





Deana Houston, student work, 12" × 16" (30 × 41 cm)



Carrie Alexander, student work, 11" × 12" (28 × 30 cm)