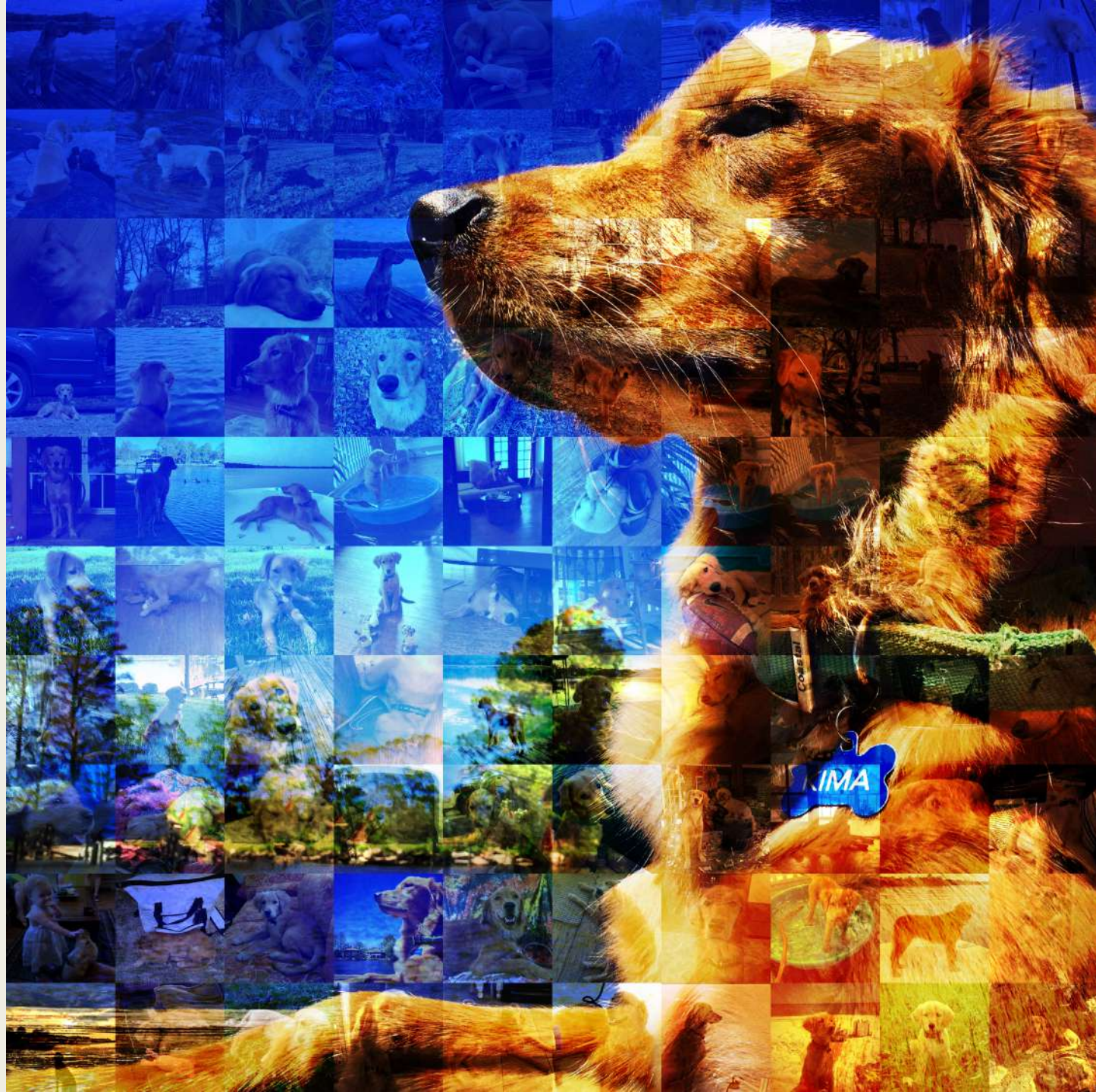




PHOTO MOSAIC PROJECT

What is a photo mosaic? It is a photo created in Photoshop- one big photo, made up of lots of small photos!

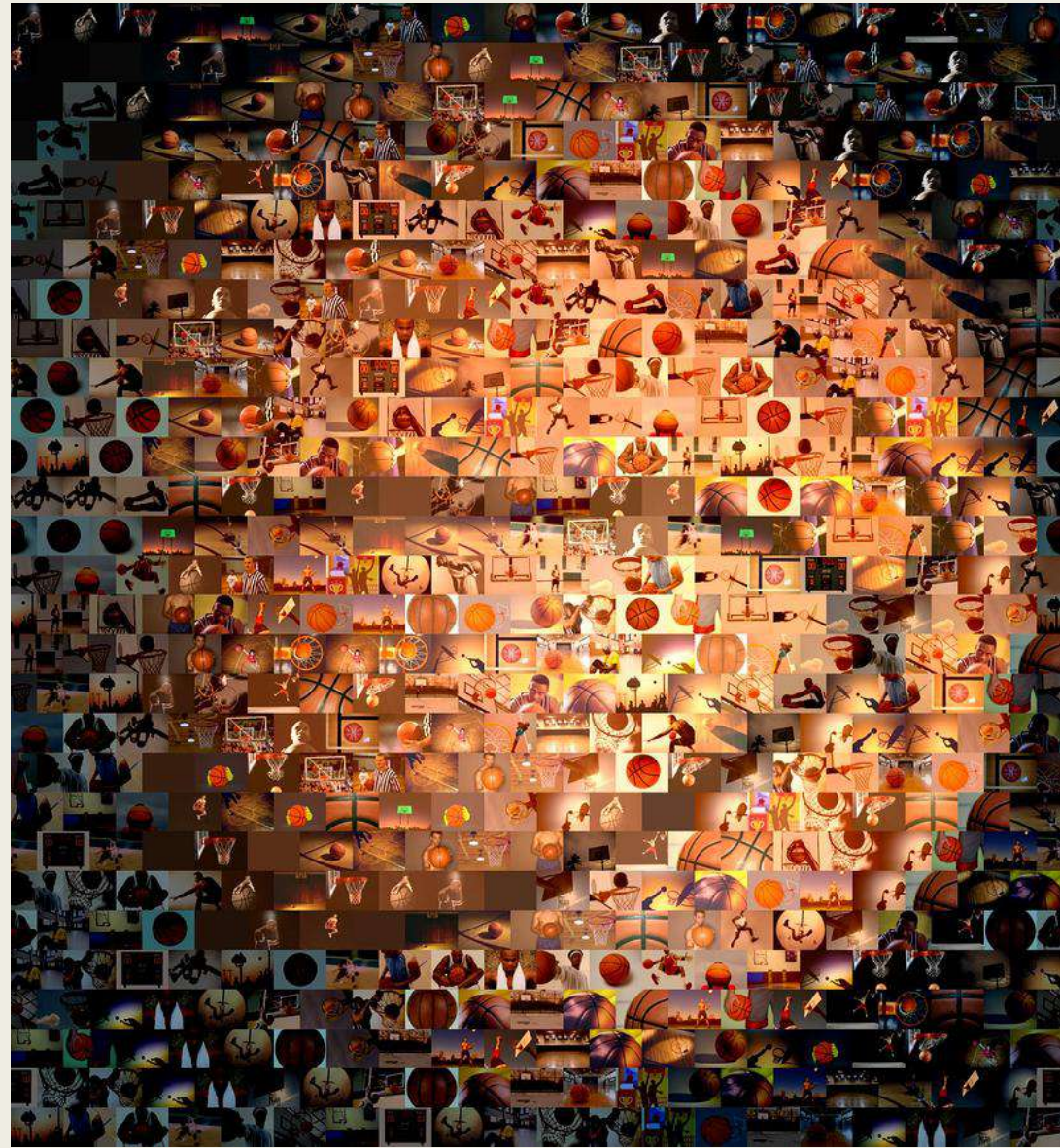












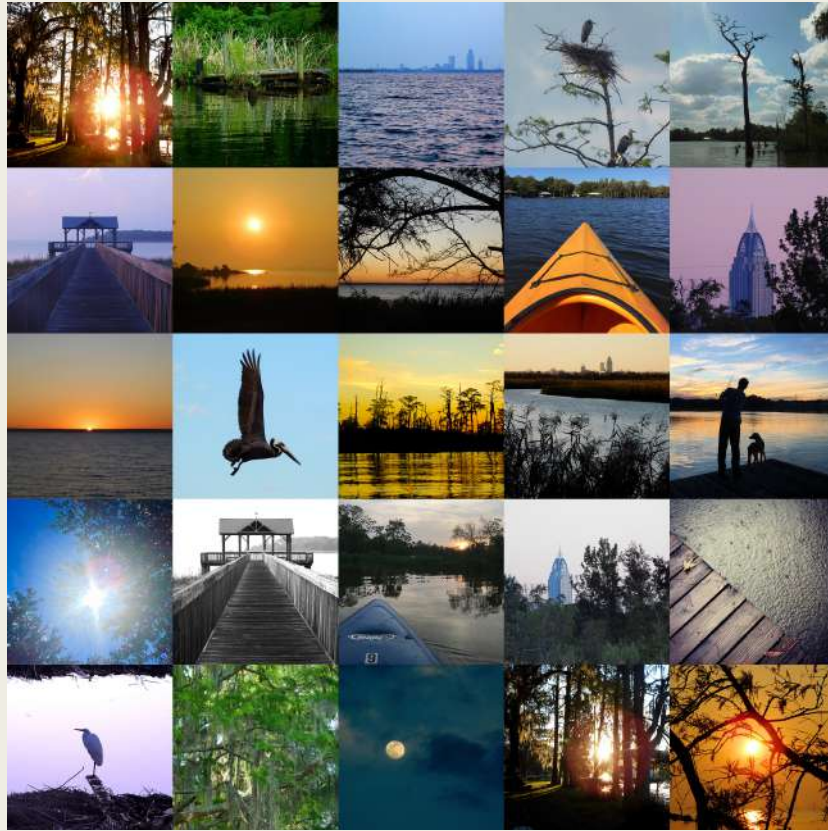




How do you start???

- Choose a theme and a main photo (your main photo may change later)
- Look through your folders, camera rolls, etc. and collect a bunch of pictures that go with your theme. Take more if you need to. Collect at least 25.
- Crop each photo to 2x2

Create a contact sheet that you will turn into a pattern.



Then- just overlay your main photo with your pattern!

Be sure to follow the instruction sheet very carefully so that you do not miss a step.

How to set up your contact sheet:

Contact Sheet II

Source Images

Use: **Folder**

☐ Include Subfolders

☐ Group Images by Folder

OK

Cancel

Load...

Save...

Reset...

Press the ESC key to Cancel processing images

Document

Units: **inches**

☐ **Flatten All Layers**

Width: **10**

Height: **10**

Mode: **RGB Color**

Resolution: **300** **pixels/inch**

Bit Depth: **8-bit**

Color Profile: **sRGB IEC61966-2.1**

Thumbnails

Place: **across first**

☐ **Use Auto-Spacing**

Columns: **5**

Rows: **5**

Vertical: **0 in**

Horizontal: **0 in**

☒ Rotate For Best Fit

☒ **Use Filename as Caption**

☐ Font: **Lucida Grande** **Regular** **12** pt