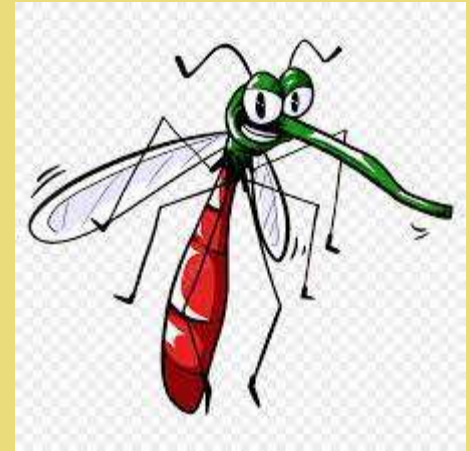
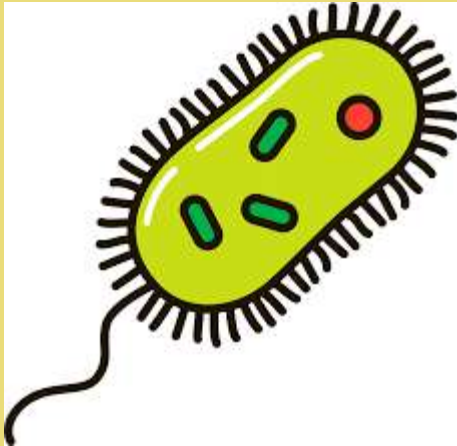


Consider the evidence you and the team have collected to support or refute each theory of yellow fever transmission.

Raise your hand...

- if you have found some strong evidence that the bacteria *Bacillus icteroides* is (or is not) the source of yellow fever transmission.
- if you have found some strong evidence that contaminated clothing is (or is not) the source of yellow fever transmission.
- if you have found some strong evidence that mosquitoes are the source of yellow fever transmission.



# Formative Assessment (Independent)

Which theory of yellow fever transmission is most supported by the evidence?

**A** The bacteria *Bacillus icteroides* is the source of yellow fever transmission.

**B** Contaminated clothing is the source of yellow fever transmission.

**C** Mosquitoes are the source of yellow fever transmission.

SENTENCE  
STARTERS

Explain **one piece** of evidence that show which claim is most supported by the evidence.

Use at least **1** of these related vocabulary words in your response: contaminated, bacteria, germ(s), hypothesis, infected, yellow fever.

You may choose to use one or two of the following sentence starters to help you get started writing.

- The claim \_\_\_\_ is most supported by the evidence because \_\_\_\_.
- The text says, “\_\_\_\_\_.” This proves the theory about \_\_\_\_\_, because \_\_\_\_\_.