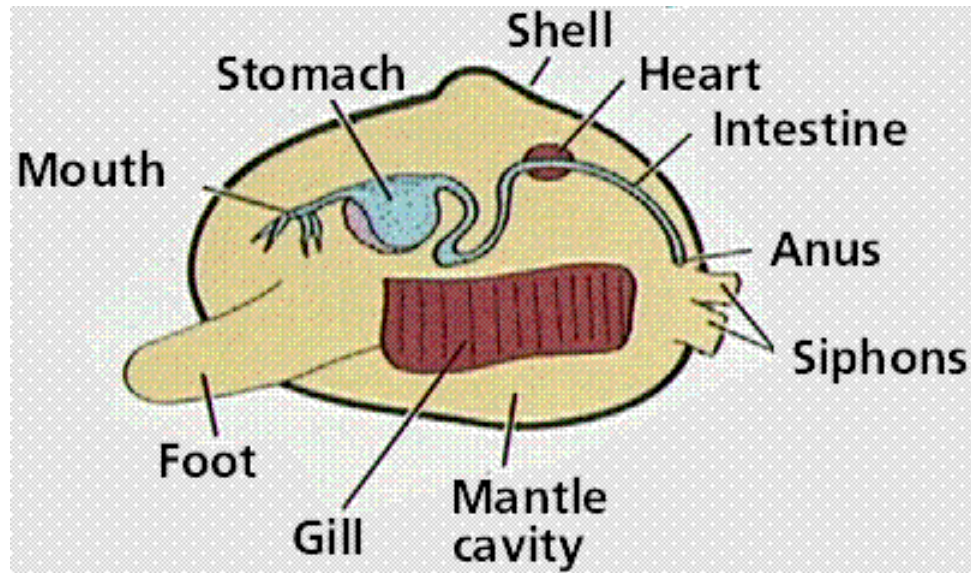


# MOLLUSK PICTURE ID



Slideshow by Kelly Riedell/Brookings Biology

**A =**

**stomach**

---

**B =**

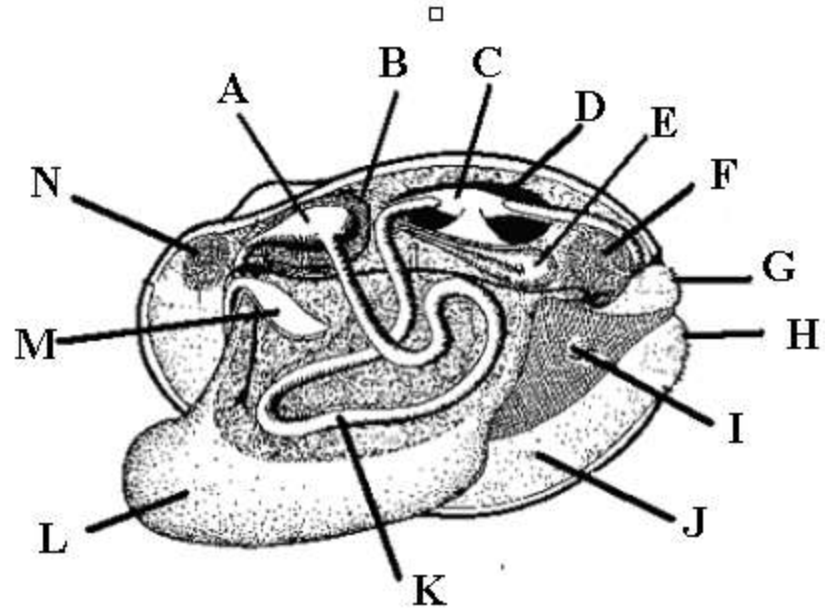
**Digestive gland**

---

**C =**

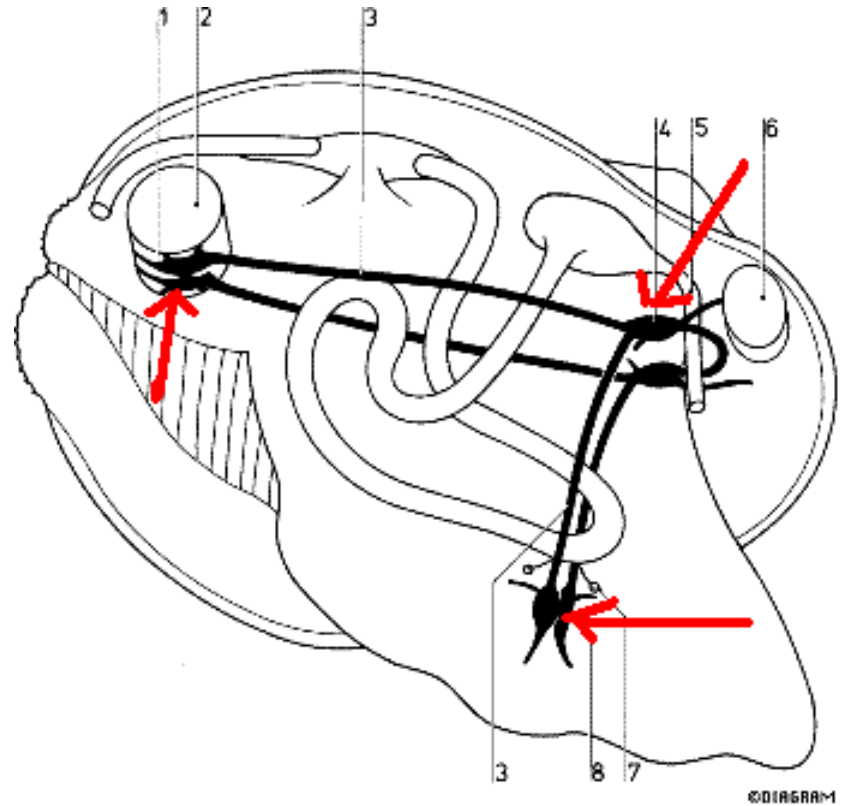
**heart**

---



**The arrows are  
pointing at  
ganglia**

---



**These structures are part of the  
nervous system**

---

**D =**

**Pericardial  
cavity**

---

**E =**

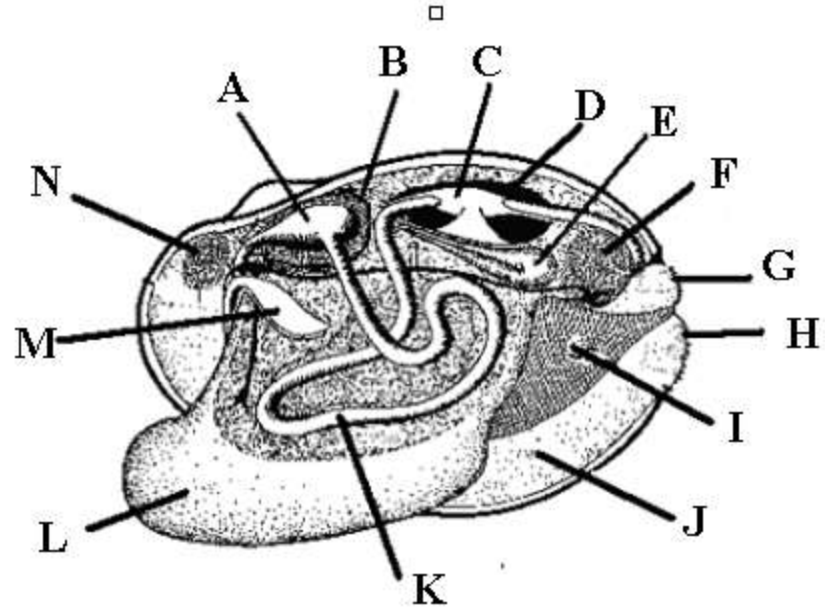
**kidney**

---

**F =**

**Posterior adductor muscle**

---



G =

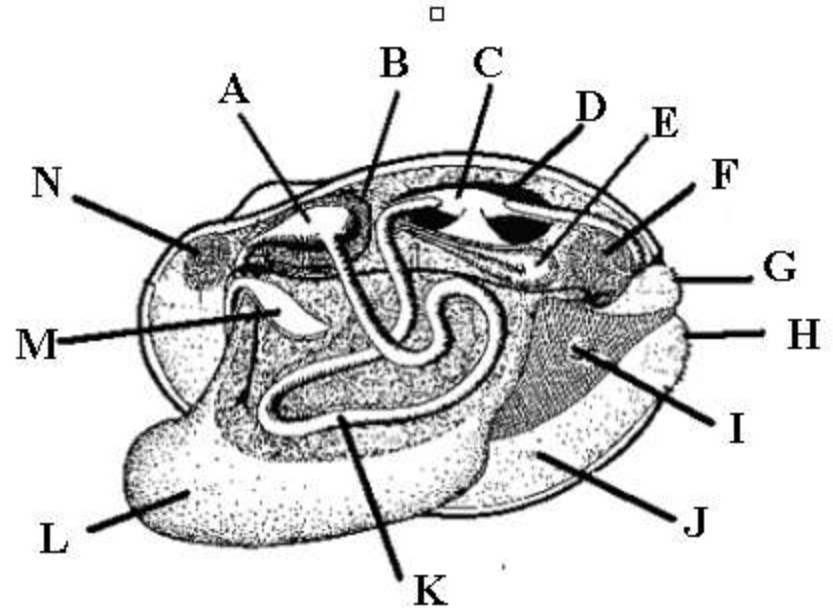
Excurrent siphon

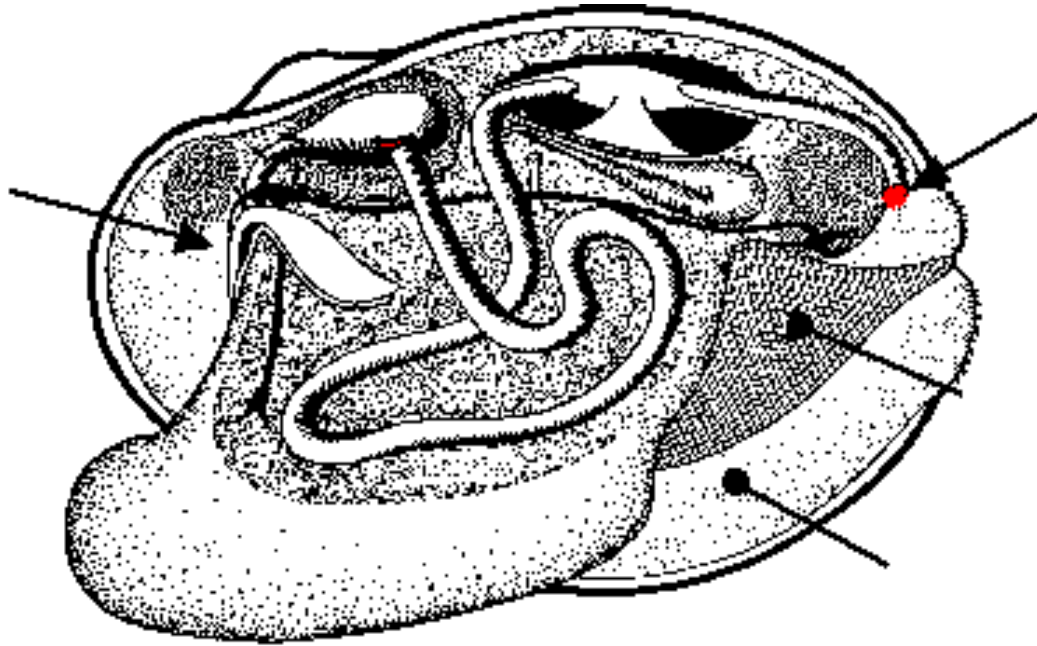
H =

Incurrent siphon

I =

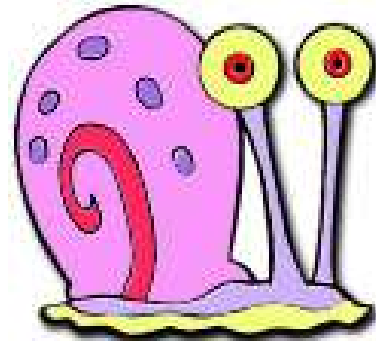
gills





This opening is the anus

It is the exit opening for  
Digestive waste (feces)



**These mollusks are in the**  
**CLASS Gastropoda**

Slug image: <http://home.messiah.edu/~weiand/bugs/pics/Slug.jpg>

**J =**

**mantle**

---

**K =**

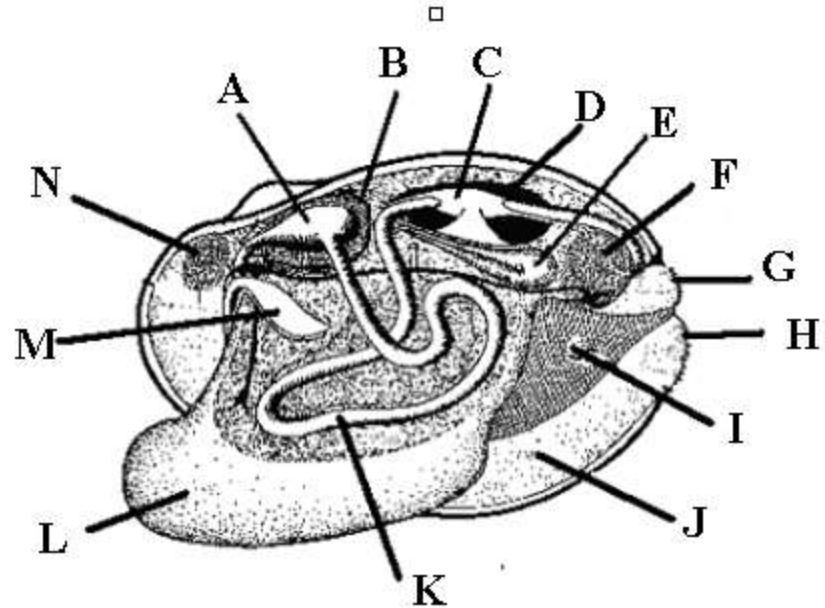
**intestine**

---

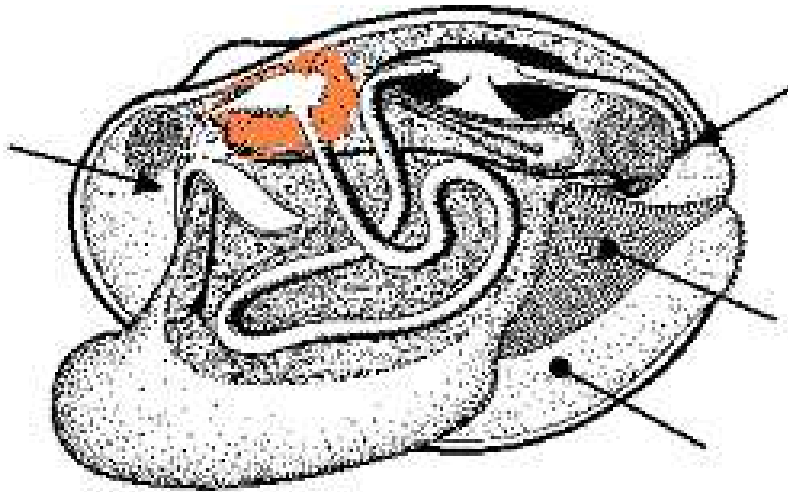
**L =**

**foot**

---







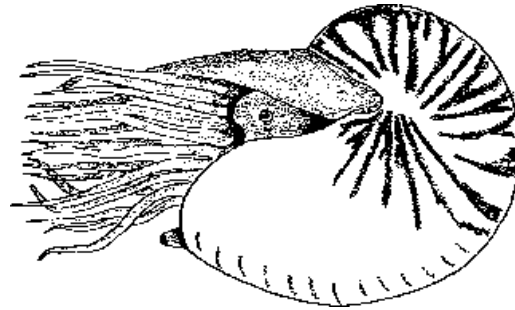
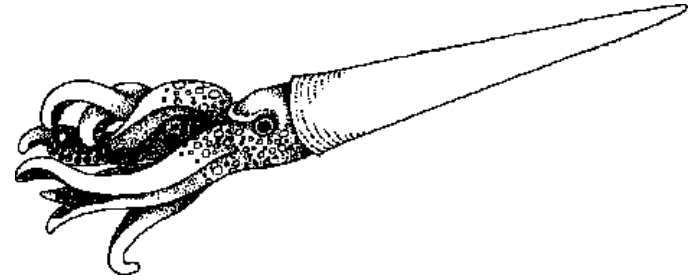
**The colored structure is the**  
**Digestive gland**

**Tell its 3 functions:**

**Make digestive enzymes (bile)**

**Finish digestion**

**Absorb nutrients**



**These mollusks are in the**  
**CLASS** **Cephalopoda**

**M =**

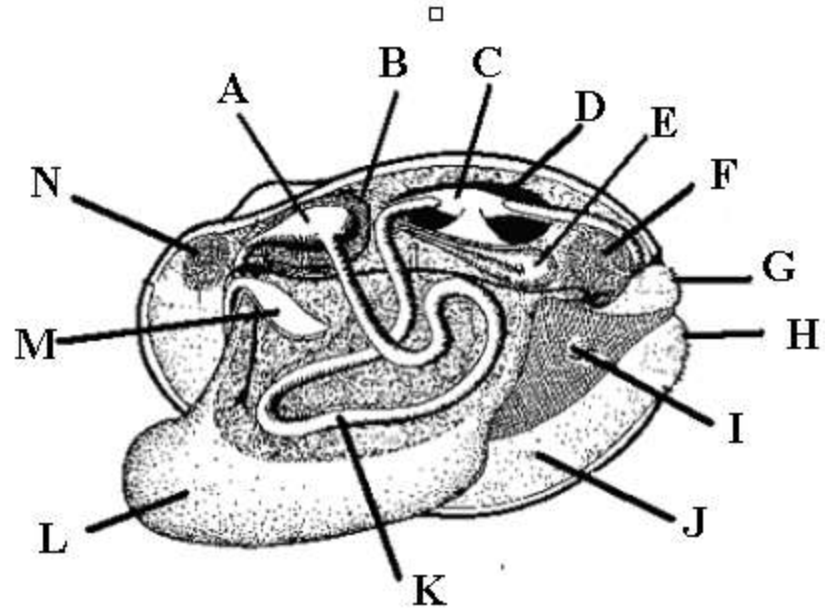
**palps**

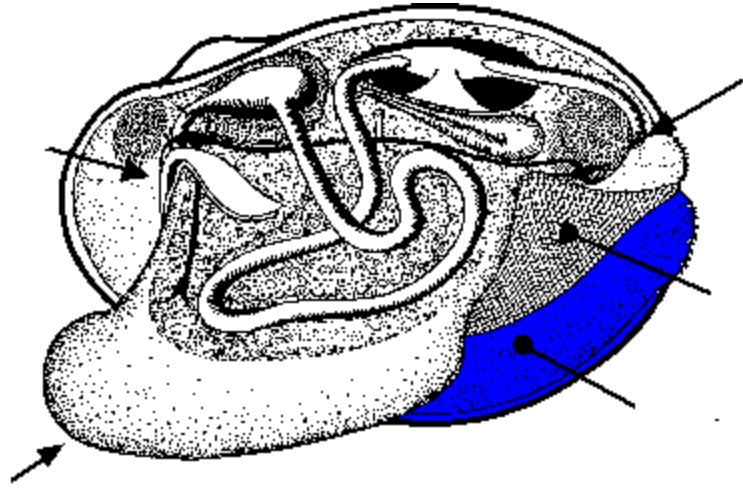
---

**N =**

**Anterior adductor  
muscle**

---





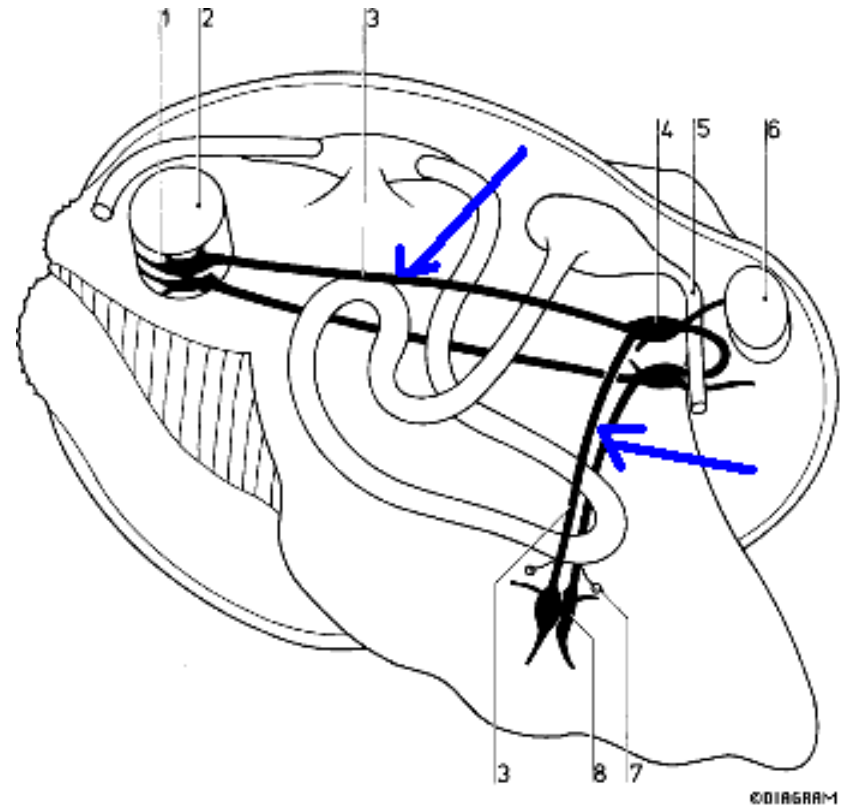
**The colored layer is the**  
**mantle**

---

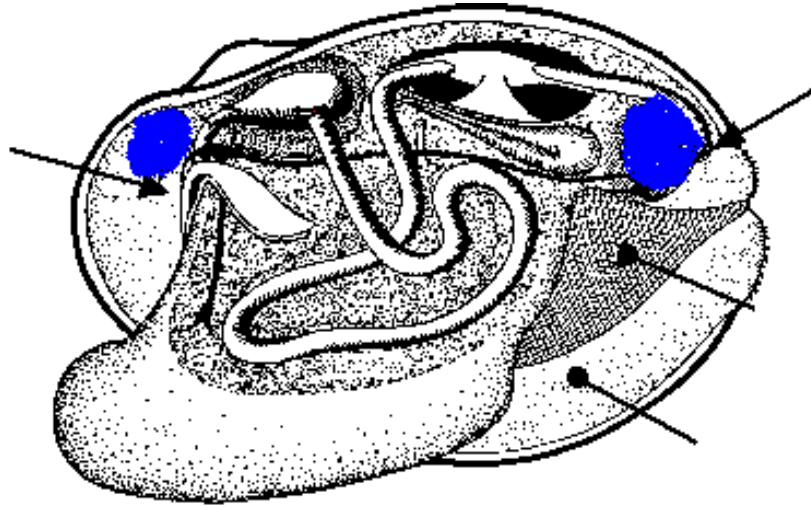
**Its function is to**  
**Make the shell**

---

**The arrows are  
pointing at  
Nerve cords**

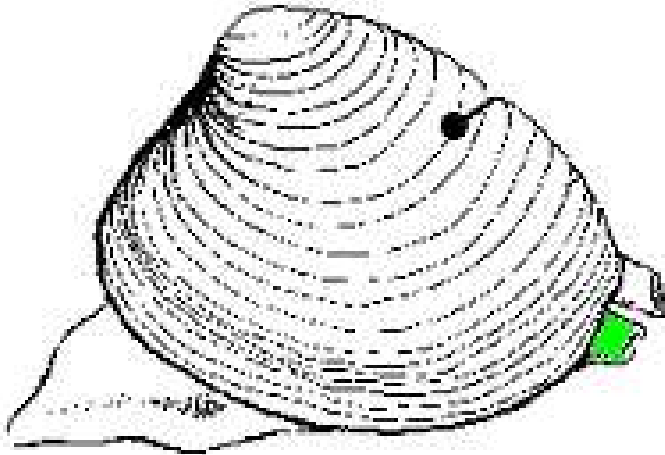


**These structures are part of the  
nervous system**



**The colored structures are the**  
**Adductor muscles**

**Their function is to**  
**Open & close shell**



**The colored structure is the**  
**Incurrent siphon**

**Its function is**  
**entrance opening for water**  
**entering mantle cavity**

**D =**

**mantle**

---

**E =**

**foot**

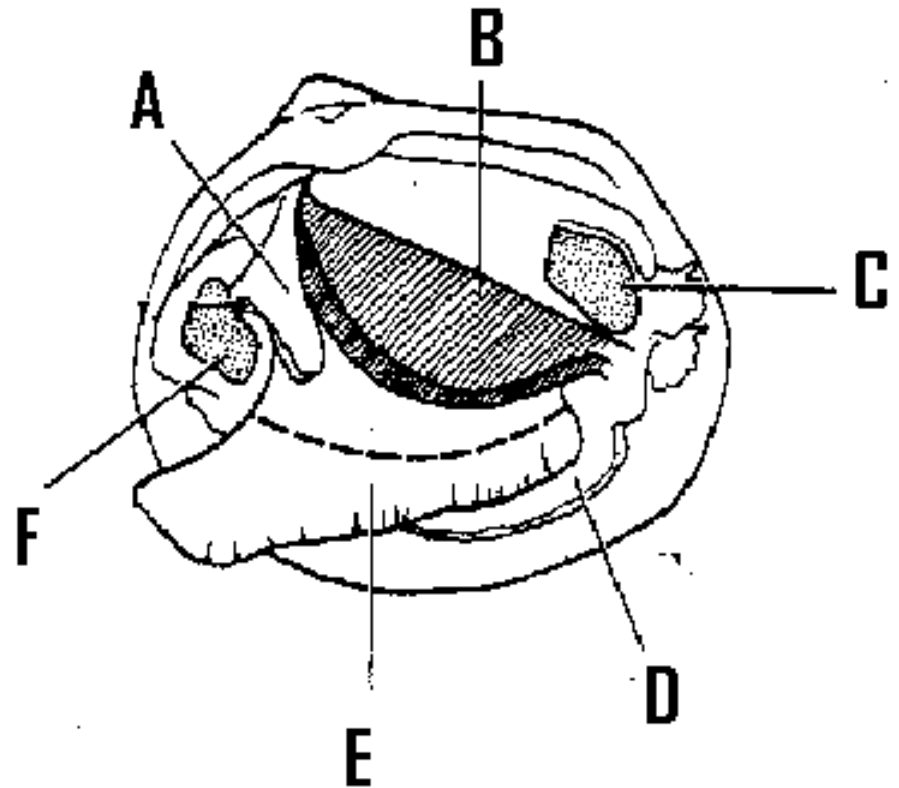
---

**F =**

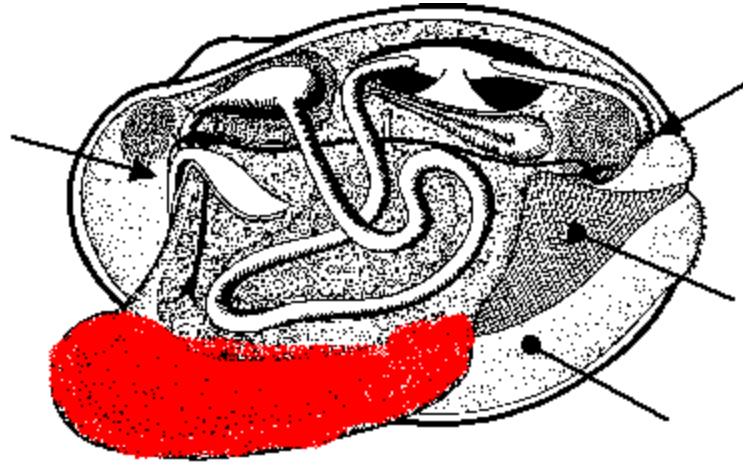
**Anterior**

---

**adductor muscle**





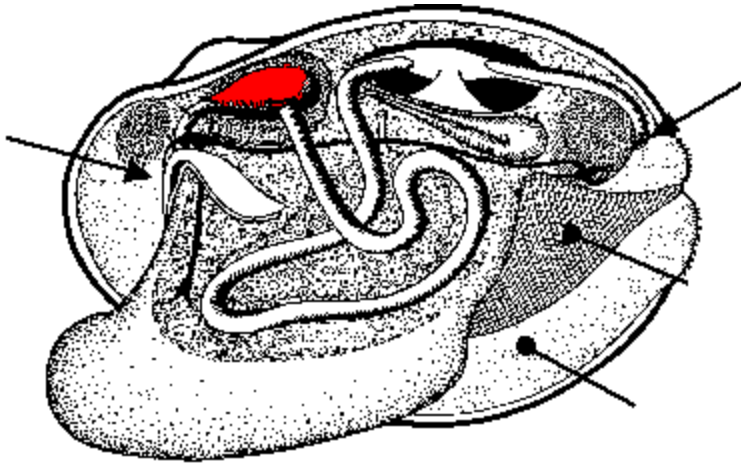


**The colored structure is the**  
**foot**

---

**Its function is**  
**locomotion**

---



**The colored structure is the**  
**stomach**

---

**Its function is to**  
**Start digestion; grind food**

---

**A =**

**palps**

---

**B =**

**gills**

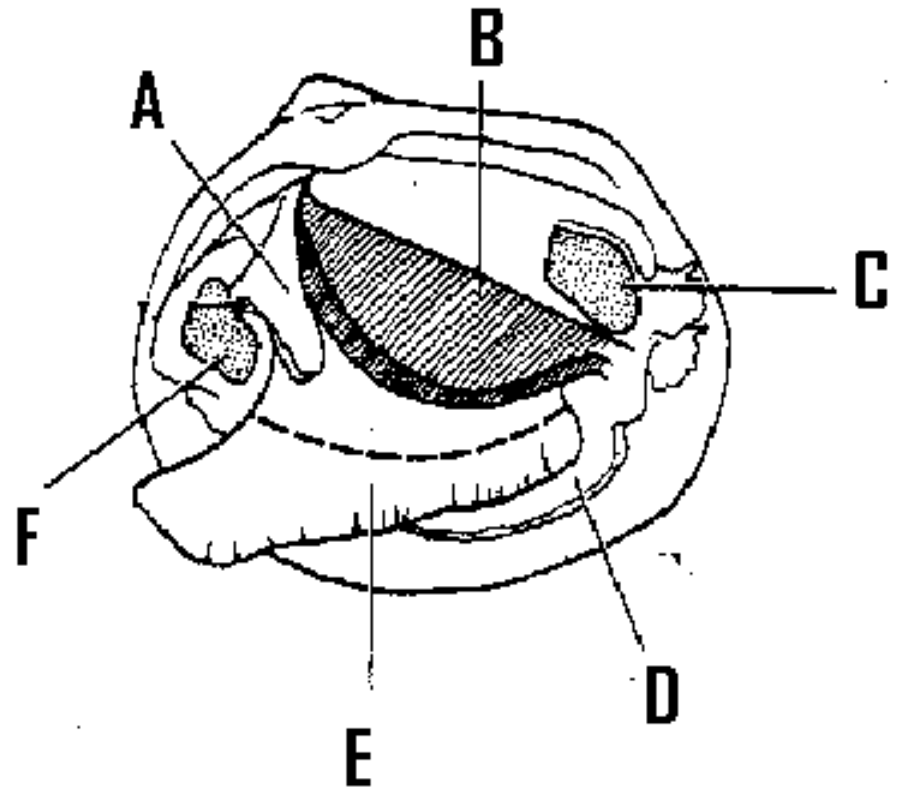
---

**C =**

**Posterior**

---

**adductor muscle**





**These mollusks are in the**  
**CLASS bivalvia**

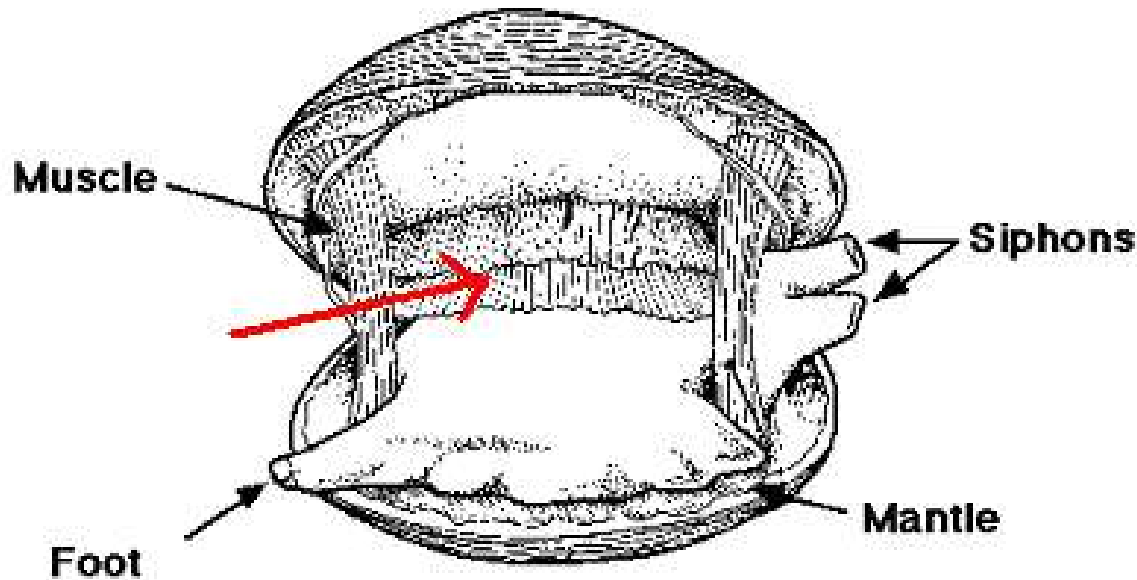
Clam image:

Oyster image:

<http://www.discoveryvillage.net/img/oyster.jpg>

Scallops image :

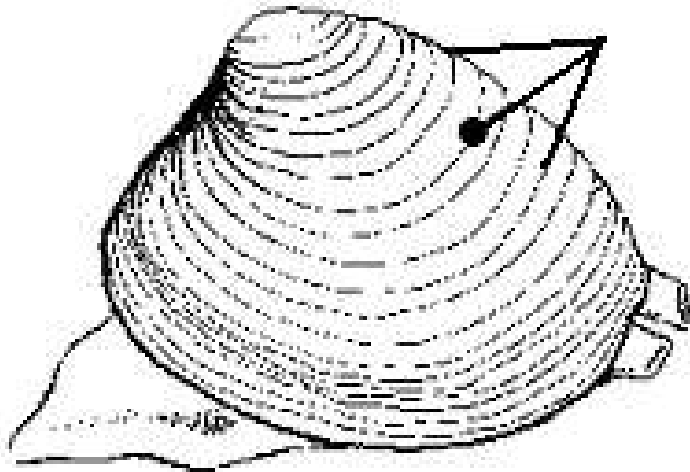
<http://www.lib.noaa.gov/japan/aquaculture/exchange/2000tripimages/scallops.jpg>



The arrow is pointing at the space called Mantle cavity

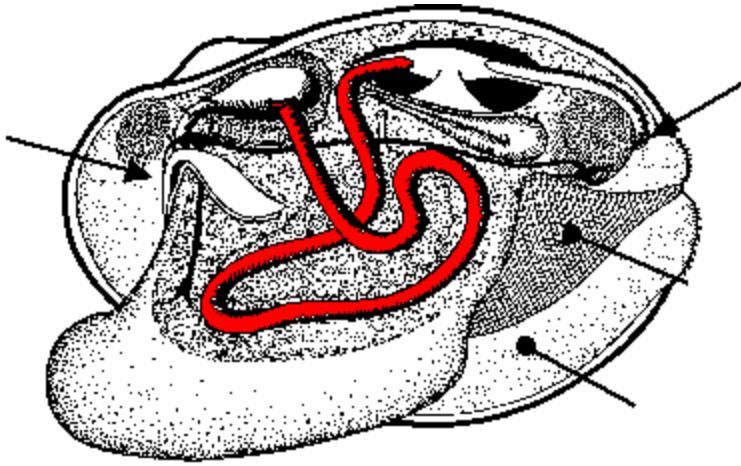
Name 3 body systems that use this cavity as an exit for their products

Reproductive, excretory, digestive



**These lines on the shell are called**  
**Growth rings**

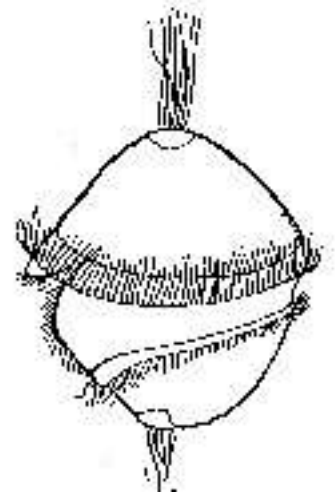
**They tell something about the clam's**  
**age**



**The colored structure is the**  
**intestine**

**Its function is to**  
**Collect and remove digestive waste**

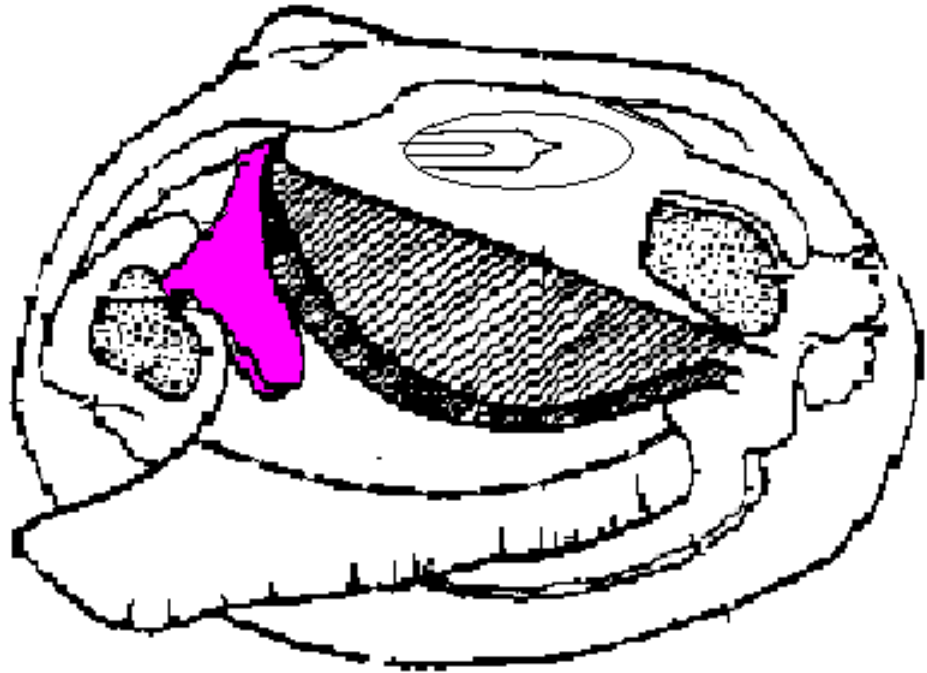
This is a  
trochophore larva  
seen in all aquatic mollusks  
except cephalopods





**Name the colored structure:**

**palps**

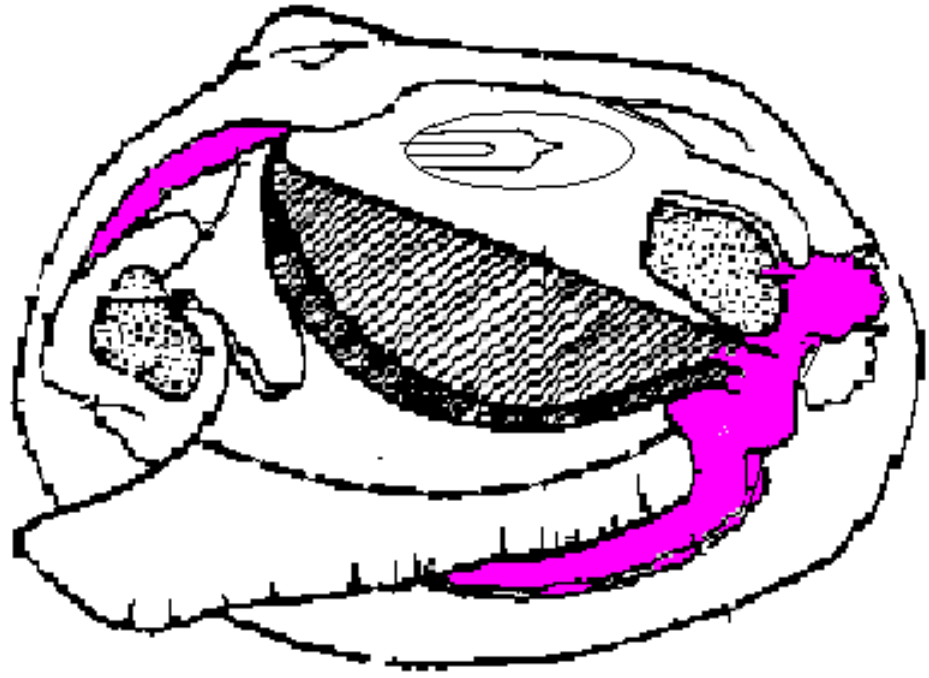


**Give its function:**

**Move food trapped on gills up  
to mouth**

**Name the colored structure:**

**mantle**

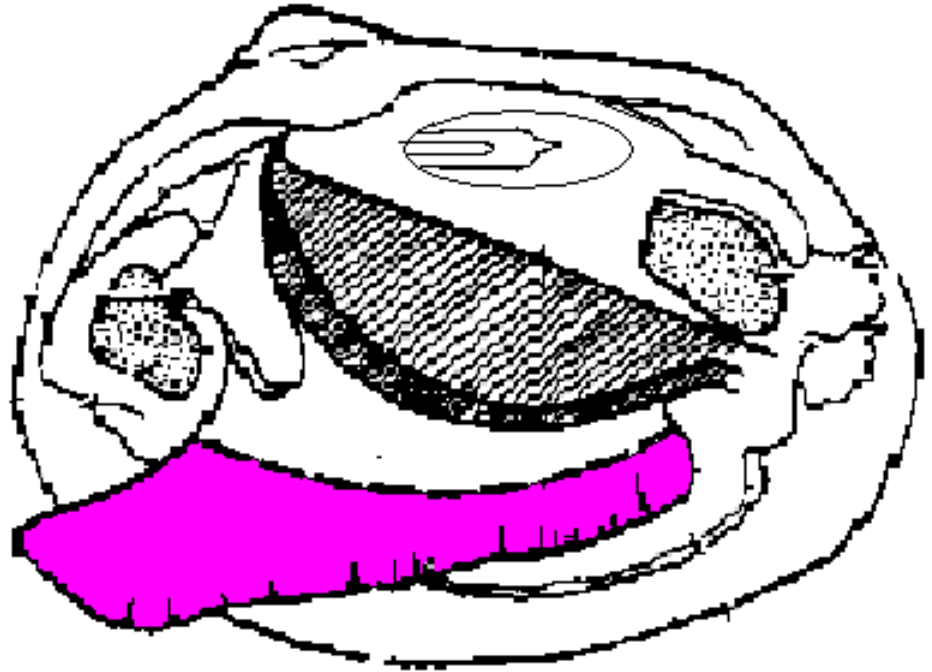


**Give its function:**

**Secrete shell**

**Name the colored structure:**

**foot**

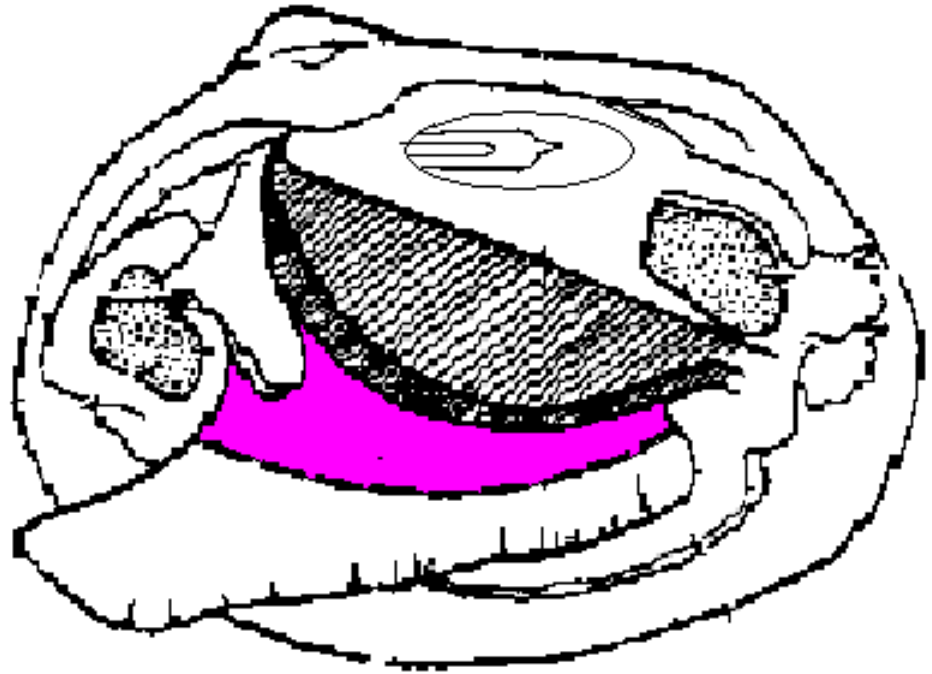


**Give its function:**

**locomotion**

**Name the colored structure:**

**Visceral  
mass**

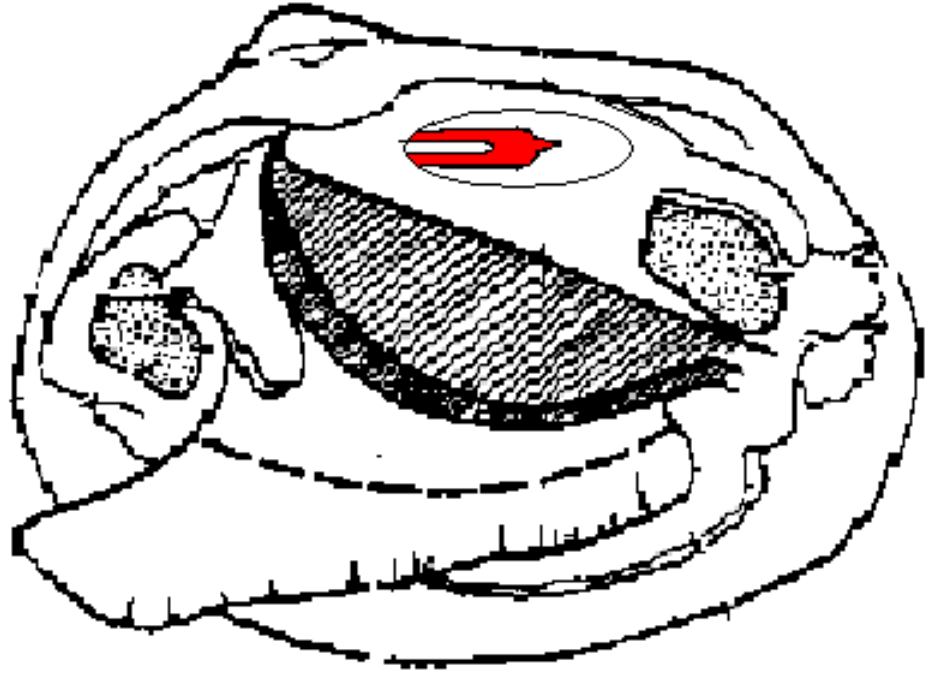


**Give its function:**

**Contains body organs**

**Name the colored structure:**

**heart**

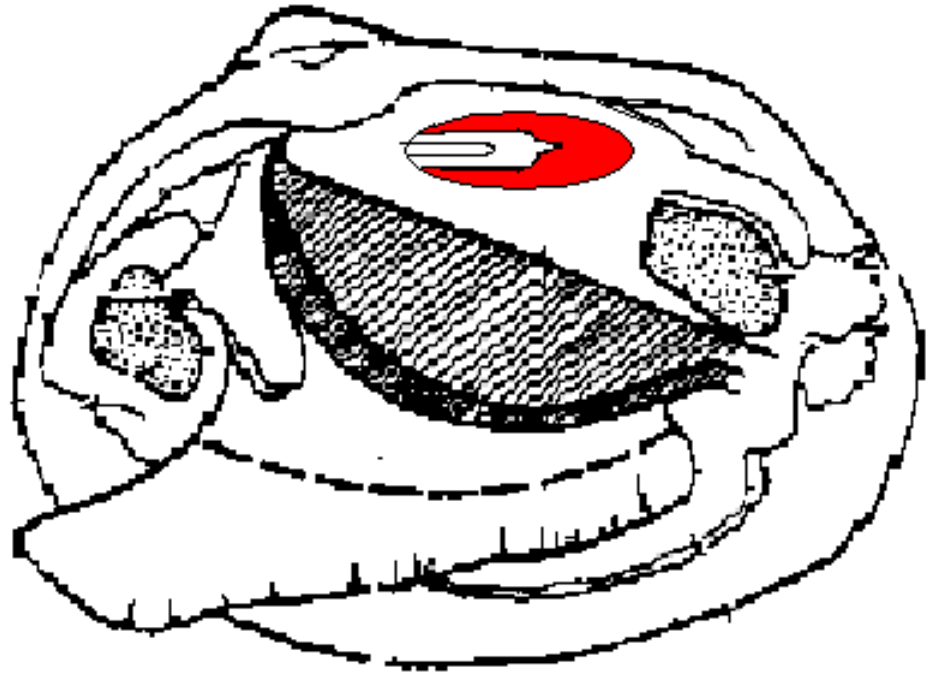


**Give its function:**

**Pump hemolymph (blood)**

**Name the colored structure:**

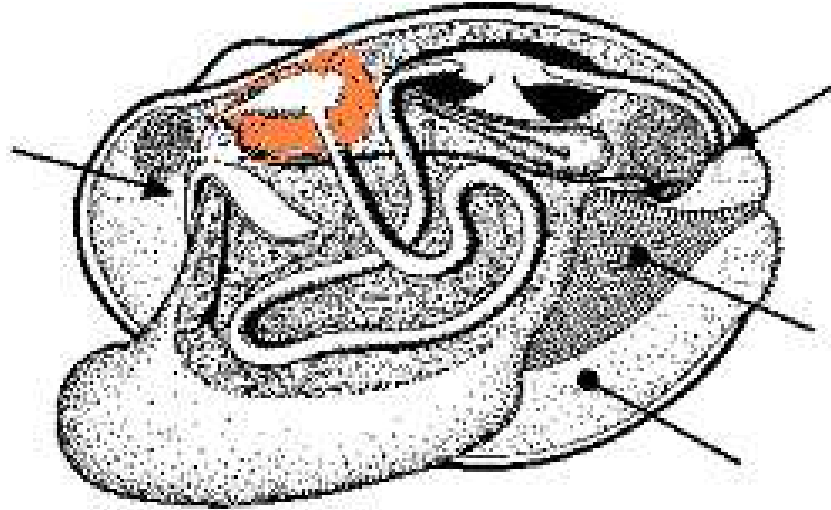
**Pericardial  
cavity(space)**



**This could also be called the**  
**coelom**

**Name the colored structure:**

**Digestive  
gland**

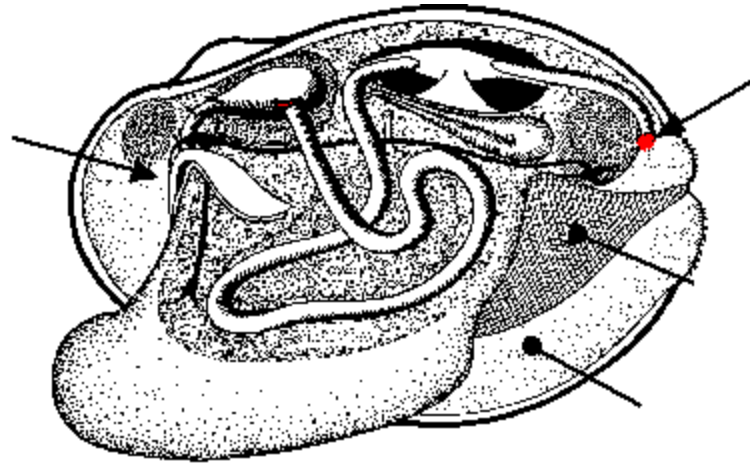


**Give its functions:**

**Make bile, finish digestion, absorb  
nutrients**

**Name the colored structure:**

**anus**



**It is the exit opening for which  
Body system?**

**digestive**