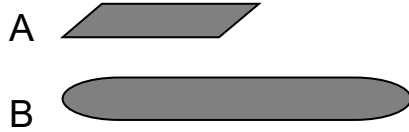


Name: _____ 1

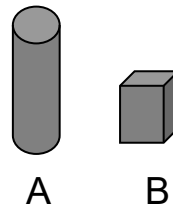
1. Write the words **longer** or **shorter** to make the sentences true.
(2 points)

Total Points:

_____/26



A is _____ than B.



A is _____ than B.

2. Fill in the blanks. (5 points)

Put the shoes in order from
shortest to longest.

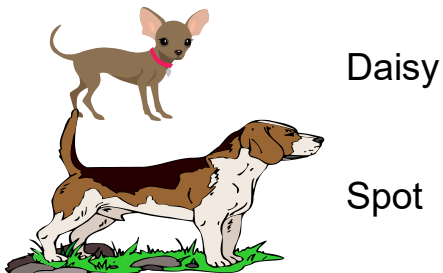


Shoe _____ is the longest.

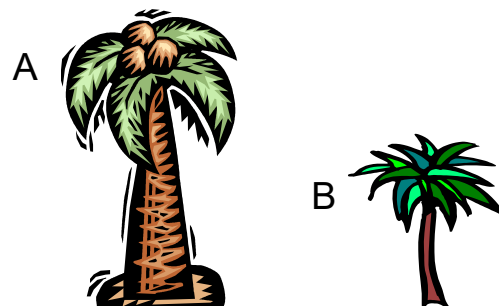
Shoe _____ is the shortest.

3. Follow the directions. Complete the sentences. (4 points)

Circle the longer dog.

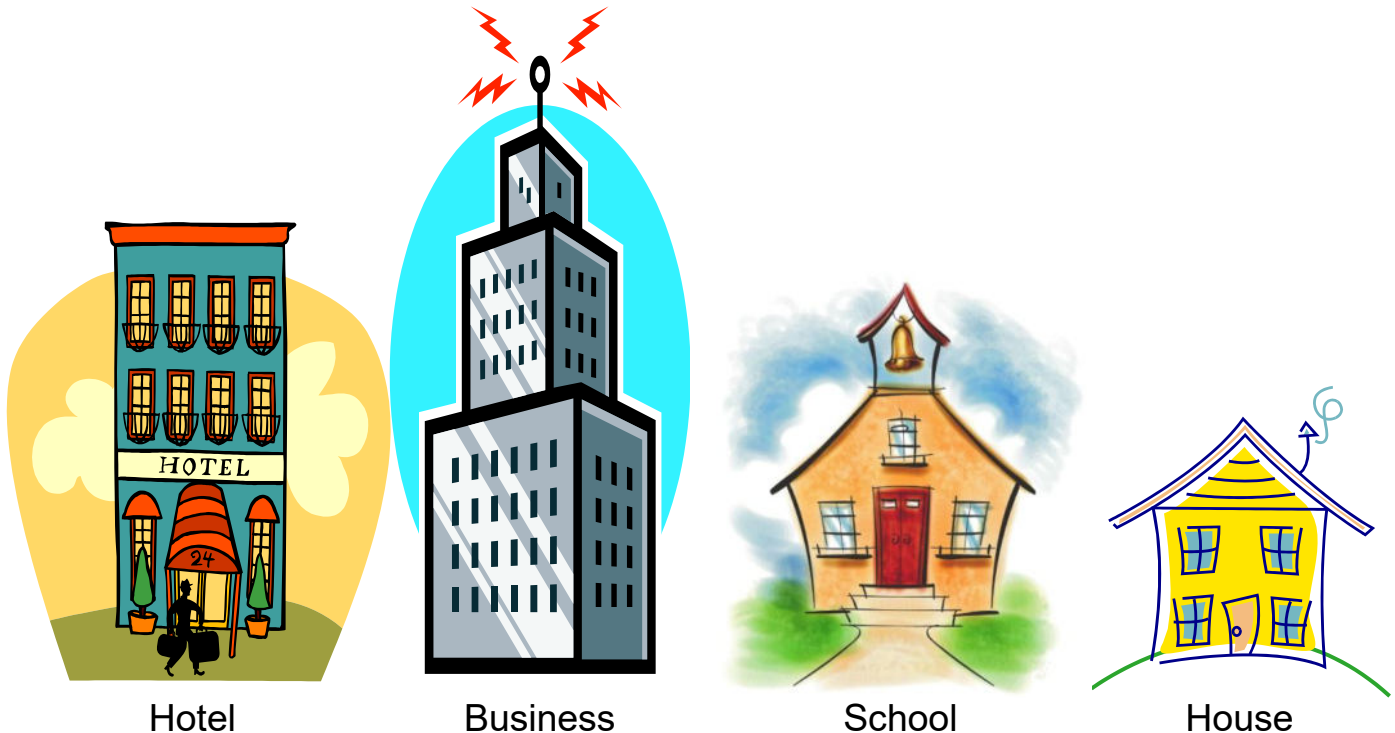


Circle the shorter tree.



_____ is longer than _____. _____ is shorter than _____.

4. Look at the pictures. Circle the word that would make the sentence true. (4 points)



- a. The business is **taller / shorter** than the house.
- b. The house is **taller / shorter** than the hotel.
- c. The school is **taller / shorter** than the business.
- d. The hotel is **taller / shorter** than the school.

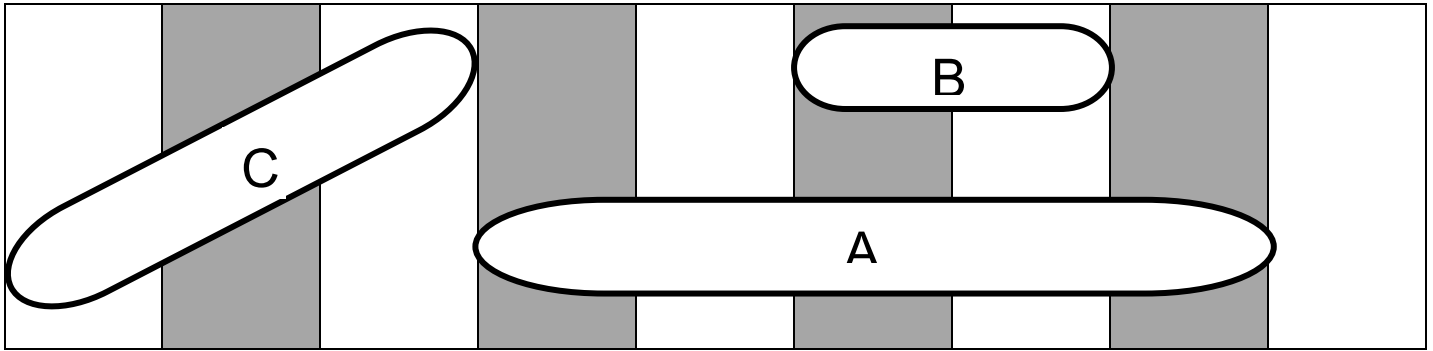
5. Draw a picture to help you solve the measurement problem. Circle the word that would make the sentence true. (2 points)

Dan is taller than Jan.

Sam is taller than Dan.

Jan is **taller / shorter** than Sam.

6. Use the picture to answer the questions about the ovals. (5 points)

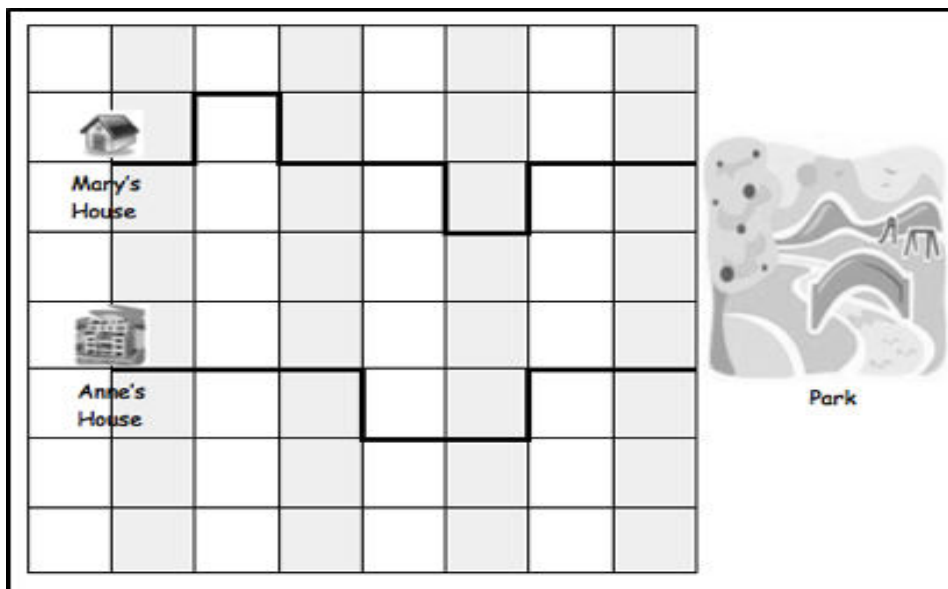


a. Which is the shortest oval? _____

b. If oval A is longer than oval C, the longest oval is _____.

c. Order the ovals from shortest to longest.

7. Use the picture to answer the questions about the children's paths to the park. (4 points)



Picture taken from
<http://www.engageny.org/resource/grade-1-mathematics-module-3>

Mary's and Anne's paths on the City Blocks grid

a. How long is Mary's path to the park? _____ blocks

b. How long is Anne's path to the park? _____ blocks

c. Anne's path is **longer / shorter** than Mary's path.

d. Who took the longer path to the park? _____

Teacher Scoring Guide

Teacher Information:

- This evaluation is to be administered after all parts of Lesson 3 have been sufficiently completed and students exhibit understanding through formative assessments.
- All items should be read aloud to students.
- The total point value of this evaluation is 26. On page 1 of the student evaluation, there is a space provided for the total points earned.

| Item # | Point Value |
|--------|---|
| 1 | 2 points - 1 point per blank |
| 2 | 5 points - 1 point per blank |
| 3 | 4 points - 1 point per circle, 1 point per statement |
| 4 | 4 points - 1 point per statement |
| 5 | 2 points - 1 point for picture, 1 point for statement |
| 6 | 5 points - 1 point per blank |
| 7 | 4 points - 1 point per blank/statement |