

Multilingual Education Information Meeting

August 4, 2022

In the chat: What is one interesting thing you have done this summer?

Please rename yourself with your full name and school district.



Washington Office of Superintendent of
PUBLIC INSTRUCTION

Meet our new Program Supervisor

Katie Sperling

- Lives in Chelan Valley with husband and two kids on a small farm
- Supporting ESD 101 & 171
- 22 years working with multilingual learners in EL, Early-Exit, & Dual Language
- Learned Spanish while studying in Central Mexico



Tribal Land Acknowledgement



We would like to acknowledge the indigenous people who have stewarded this land since time immemorial and who still inhabit these areas today.

We are presenting from the ancestral lands of the Puyallup, Chehalis, Chelan, Yakama, and Coast Salish Tribes and honor with gratitude the land itself and these tribes.



Vision

All students prepared for post-secondary pathways, careers, and civic engagement.

Mission

Transform K–12 education to a system that is centered on closing opportunity gaps and is characterized by high expectations for all students and educators. We achieve this by developing equity-based policies and supports that empower educators, families, and communities.

Values

- Ensuring Equity
- Collaboration and Service
- Achieving Excellence through Continuous Improvement
- Focus on the Whole Child



Washington Office of Superintendent of
PUBLIC INSTRUCTION



Multilingual Education Team Goals:

- Support the expansion of **dual language programs** and the development of strong **research-based program models** for all multilingual learners.
- Support educators in using the **WIDA ELD Standards Framework**, assessments and professional learning resources.
- Provide **clear and consistent information** and support for transitional bilingual instruction programs.



Washington Office of Superintendent of
PUBLIC INSTRUCTION

Today's Agenda

- WIDA Screening Updates
- Family Communication
- Early Literacy Screening Guidance
- 2022-23 Policies & Practices Guide
- Grant Applications
- WIDA Professional Learning



WIDA Screening & TA Training



- WIDA Screening can begin after Aug. 1st (all grades).
- All test administrators must recertify for test administration annually.
- WIDA Secure Portal training will not reset until September 1, but the trainings are not changing, just the date. TAs can recertify before or after the reset for SY 22-23.
- Grades 1-12: screener results will be available in WIDA AMS in 49 languages.

WIDA Screener Proficiency Scores

Grade	Overall	Domain
1st	4.5	4.0 (all domains)
2-12	5.0	4.0 (all domains)



New Kindergarten Screening Process

Before January 1st:

- Students can only screen on **Speaking and Listening domains**. They must achieve a level 5 in each domain to be considered ineligible for ELD services.

On or After January 1st:

- Students must screen on **all four domains**. They must achieve a 4.5 overall composite score and a 4.0 minimum domain score to be considered ineligible for ELD services.

Kindergarten WIDA Screener Proficiency Scores

Time of Year	Domain Score Minimum	Composite Score Minimum
Prior to Jan. 1 st	5.0 (speaking & listening only)	5.0 (oral language)
On or After Jan. 1 st	4.0	4.5 (overall)



Transitional Kindergarten Screening

Beginning in the 2022-23 school year, use the following procedure for screening students in Transitional Kindergarten (TK):

1. **Administer Home Language Survey** and review first language and most used language (questions 2 & 3)
2. **Provisionally qualify** students who are possibly eligible, using date of enrollment as Initial Placement Test Date
3. **Screen TK students in the spring** starting May 1st using the WIDA Kindergarten Screener (listening & speaking only) before the end of the year

Provisionally-qualified TK students can be reported on the P-223 for TBIP funding. Services are best provided in the TK setting (not pull-out).



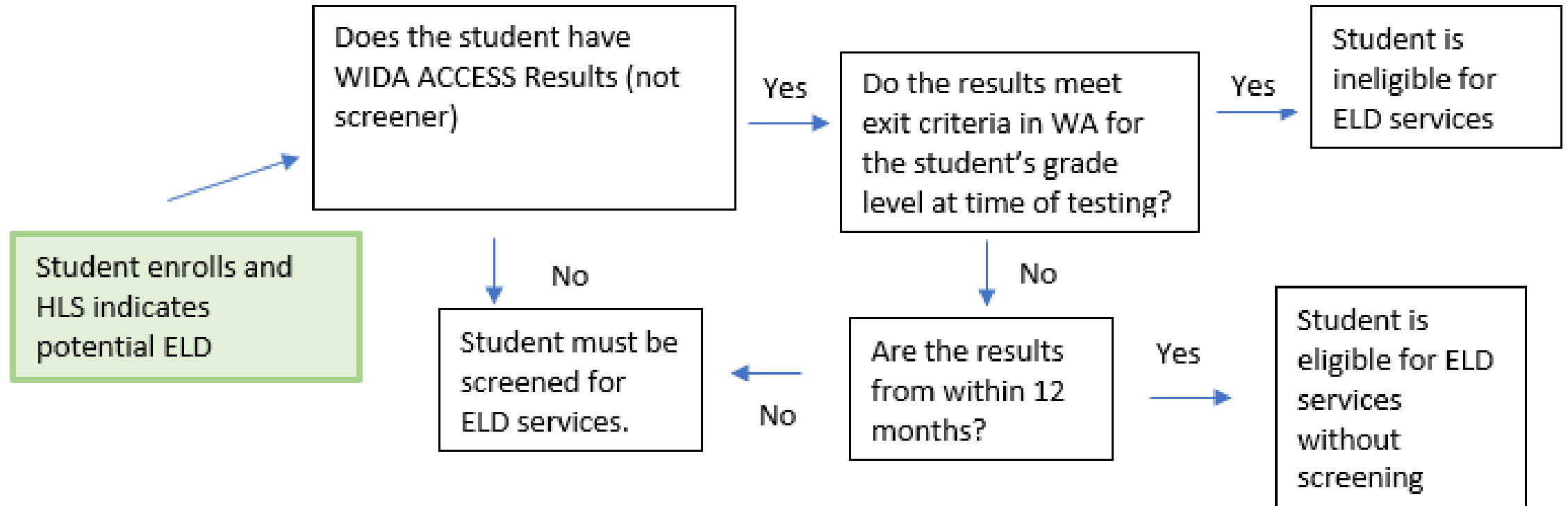
Out-of-State Transfer Students

WIDA ACCESS scores from out-of-state can be used in lieu of screening under the following conditions:

- If the student **met** the current WA State WIDA Exit Criteria at any point, the student is **ineligible** for services.
- If the student **did not meet** the WA State WIDA Exit Criteria on a test taken within the previous 12 months, the student is **eligible** for services.
- If the student **has not taken** the WIDA ACCESS **in the last 12 months** and has not met the current WA State Exit Criteria, then the student must be screened.

All WIDA scores must reflect the requirements for the grade level the student was enrolled in when tested. Students must be identified within 10 school days of enrollment, so if scores are not available in that time frame, the student must be screened.

Out-of-State Transfer Students Flow Chart



Screeners Materials

- You can use kindergarten materials from last year's WIDA Screener tests to administer tests for the 2022-2023 school year.
- OSPI printed booklets for screening in grades 1-3. These should arrive in district on August 1st. Please print additional booklets from WIDA Secure Portal if needed.
- To order additional Kindergarten WIDA Screener materials districts need to place an order directly with the [WIDA Store](#). For step-by-step guidance, check out the Screener FAQ on this page.

Notification Timeline

SEPTEMBER

Notification of Continued Eligibility OR
Notification of Placement (New Students)

ON-GOING

Notification of Placement (New Students) OR
Notification of Continued Eligibility (New Transfers)

JUNE

Score Report (in Home Language)
Score Report Letter OR
Transition Letter
File Score Report in English in Cum Folder



New Student Placement Letter

- Updated letter
- Change to WIDA
- Explanation of screening process
- Shows student scores & proficient scores
- May want to separate Kindergarten from grades 1-12
- Include programs offered in district & check program



Washington Office of Superintendent of
PUBLIC INSTRUCTION

Family Notification of New Student Placement in an English Language Development Program

Student's Name: _____ Date: _____

School: _____ School District: _____

Dear Parent or Guardian,

When you registered your child for school, the home language survey you completed indicated your child first spoke a language other than English OR your child uses a language other than English most often at home. Based on this information, the law requires the school to give your child an English Language Proficiency Screener to determine your child's eligibility for English language development instruction to help your child acquire English.

Based on this screener, your child is eligible for English Language Development services for the **INSERT YEAR** school year. Your child will receive services until they reach proficiency on the state-approved English language proficiency assessment.

WIDA Screener	Overall	Listening	Reading	Speaking	Writing
Your Child's Scores					
For grade K before January 1, to be considered proficient, students must score:	5	5	-	5	-
For grade K after January 1, to be considered proficient, students must score:	4.5	4	4	4	4
For grade 1, to be considered proficient, students must score:	4.5	4	4	4	4
For grades 2-12, to be considered proficient, students must score:	5	4	4	4	4

Continuing Student Letter

- Updated letter
- Change to WIDA
- Shows student scores & proficient scores
- Use SBA or district assessments for ELA and Math data
- Include programs offered in district & check program

Family Notification of Continuing Student Placement in an English Language Development Program

Student's Name: _____ Date: _____

School: _____ School District: _____

Dear Parent or Guardian,

Your child continues to be eligible for English Language Development services for the **INSERT YEAR** school year. Your child will receive services until they reach proficiency on the state-approved English language proficiency assessment.

WIDA ACCESS for ELLs	Overall
Your Child's Most Recent Score	
For grades K-1, to exit services, students must score:	4.0
For grades 2-12, to exit services, students must score:	4.7

The purpose of the English Language Development program is to provide language instruction for students in speaking, listening, reading, and writing in English. The program will also help your child meet grade level academic standards and requirements for promotion and graduation. Here is how your child is progressing in meeting grade level academic standards, based on state and district assessments:

	Approaching Standard	Meeting Standard	Exceeding Standard
English Language Arts			
Mathematics			



Washington Office of Superintendent of
PUBLIC INSTRUCTION

WIDA Alternate ACCESS Eligibility Letter

- Updated letter
- Shows WIDA Alt ACCESS levels
- Include programs offered in district & check program
- Some components may not seem relevant but are federally required

**Family Notification of Continuing Student Placement
in an English Language Development Program
based on the Alternate ACCESS Assessment**

Student's Name: _____ **Date:** _____

School: _____ **School District:** _____

Dear Parent or Guardian,

Your child continues to be eligible for English Language Development services for the INSERT YEAR school year. Your child will receive services until they reach proficiency on the state-approved English language proficiency assessment. Your child's English proficiency was measured on the WIDA Alternate ACCESS Assessment, and your child scored at this level:

☐ A1, Initiating
☐ A2, Exploring
☐ A3, Engaging

☐ P1, Entering
☐ P2, Emerging
☐ P3, Developing

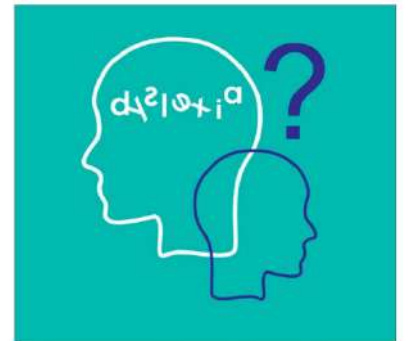
The purpose of the English Language Development program is to provide language instruction for students in speaking, listening, reading, and writing in English. The program will also help your child meet academic standards and requirements for promotion and graduation. The English language development program will coordinate with appropriate staff to meet the objectives of your child's Individualized Education or 504 Plan.



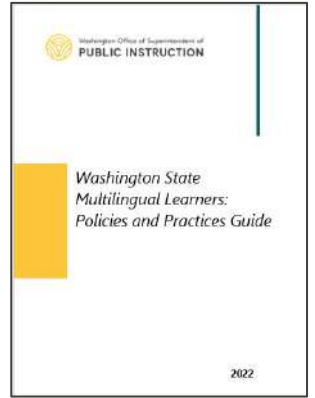
New Early Literacy Screening Guidance

Guidance on screening multilingual learners...

- ALL K-2 multilingual learners must be screened except in their first 4 months in U.S. schools
- Students may be screened in languages other than English
- Focus on **progress over time** rather than grade-level norms
- Considerations for screening based on WIDA score levels
- Guidance on interpreting screening results, literacy instruction, and intervention



2022-23 Policies & Practices Guide



Updated guidance includes:

- Chapter 1: Introduction and Laws
- Chapter 2: Identification and Screening
- Chapter 3: Program Models
- Chapter 4: Dual Language
- Chapter 5: ELD Services
- Chapter 6: MTSS & Special Populations
- Chapter 7: Title III Programs
- Chapter 8: Newcomers & Refugees
- Chapter 9: Progress Monitoring & Program Evaluation
- Chapter 10: Staffing & Professional Learning
- Chapter 11: Family Engagement & Communication
- Chapter 12: Student Data & Reporting

Visit the [TBIP webpage](#) to download the Policies & Practices Guide (available by August 12).

Grant Applications

- **TBIP Grants**–Applications due August 1
- **Consolidated Grant Application (Title III)** and **Title III Consortium Grant** in EGMS will open soon.
- **EGMS Office Hours** are every Wednesday 11 –12 and Thursday 2 –3.
 - Breakout rooms by Title Program
- [EGMS webpage](#) is updated regularly with needed information
- Contact Sue or Shannon for support with EGMS
- Dual, Heritage, and Tribal Language Grant Application Deadline: **August 25**



Afghan Refugee Support to Schools Grant

New grants for schools serving refugees from Afghanistan

- Office of Refugee Resettlement (ORR)
- \$3 million for Washington state
- Nearly 1500 new students from Afghanistan in 21-22
- Federal funds to support:
 - Additional EL teachers
 - Bilingual paraeducator support
 - Instructional materials
 - Professional development
 - Family engagement activities
 - Community partnerships
- Districts that qualify have received an Intent to Participate



REUTERS/Kevin Lamarque

WA State WIDA Roll-out Plan

The WIDA Roll-out Plan includes:

- Objectives, Professional Learning, Suggested Activities & Resources

Focus Areas for 2022-23:

- Provide professional learning for all staff on how to use the WIDA ELD Standards Framework to identify **Key Language Uses** and plan **Language Expectations** for content-based instruction.
- Collaborate among language specialists and content teachers to utilize the WIDA ELD Standards Framework to support multilingual learners' **academic oral language development**.

WIDA Professional Learning Update

2021-2022 Offerings	2022-2023 Offerings
The WIDA Standards Framework: A Collaborative Approach	The WIDA Standards Framework: A Collaborative Approach
Classroom Teachers: Classroom Teachers: Engaging Multilingual Newcomers	Classroom Teachers: Classroom Teachers: Engaging Multilingual Newcomers
Engaging Multilingual Learners in Science: Making Sense of Phenomena	Engaging Multilingual Learners in Science: Making Sense of Phenomena
Developing Language for Learning in Mathematics	Developing Language for Learning in Mathematics
Social Studies: Engaging Multilingual Learners through Inquiry	Social Studies: Engaging Multilingual Learners through Inquiry
Home Languages in the Classroom	Home Languages in the Classroom
<i>School Improvement Planning for Multilingual Learners</i>	Making Language Visible in the Classroom (NEW!)
<i>Leading for Equity: Classroom Walkthrough</i>	Reframing Education for Long-term English Learners (NEW!)

Access to 2021-2022 offerings ends on Aug.31, 2022.

Access to 2022-2023 offerings begins on Sept.1, 2022.



Washington Office of Superintendent of
PUBLIC INSTRUCTION



WIDA Workshops 2022-23

Teacher Leaders: Planning with the WIDA ELD Standards Framework

- By invitation to members of the ML Teacher Leader Cohort

Attending to Equity through Bilingual Instruction

- Thursdays, Oct. 20, 27 & Nov. 3, 4:00-5:30 p.m.

Nurturing Speaking Growth

- Tuesdays, Nov. 8 & 15, 10:00-11:30 a.m.
- Mondays, Dec. 5 & 12, 3:00-4:30 p.m.
- Wednesdays, Jan. 11 & 18, 3:00-4:30 p.m.

Multilingual Teacher Leader Cohort



- Collaborative group designed to support teacher-leaders who are working with teacher teams to implement the WIDA ELD Standards Framework.
- Applicants will need to commit to one virtual webinar and one full-day in-person WIDA workshop as well as a monthly PLC meeting.
- Applicants should be in positions in which they regularly work with general education teacher teams and have dedicated time available to support them in planning content-based units to integrate content, language, and literacy for multilingual learners.
- Westside cohort is full.
- To join the Eastside Cohort, fill out the [Eastside ML Teacher Leader Cohort](#) application by August 19.

Upcoming Opportunities 2022-23

Multilingual Information Sessions (1st Thursdays, 9:00am & 3:00pm)

- Sept. 1, Oct. 5, Nov. 3, Dec. 1, Jan. 5, Feb. 2, Mar. 2, Apr. 6, May 4, June 1

Multilingual Webinar Series (Thursdays 1:00-3:00 p.m.)

- Sept. 8 | Multilingual Program Administration for New Directors
- Nov. 17 | Supporting Newcomers & Refugees
- Jan. 19 | Long-Term English Learners
- Mar. 16 | Multilingual Students with Disabilities
- May 11 | Title III & TBIP Grants & Program Evaluation





Washington Office of Superintendent of
PUBLIC INSTRUCTION

Multilingual Education Team

Office of the Superintendent of Public Instruction
600 Washington St. SE | Olympia, WA 98504-7200

P.O. Box 47200 | Olympia, WA 98504-7200
360-725-6147



Katie Sperling
Program Supervisor
Katie.sperling@k12.wa.us
ESD 101 & 171



Shannon Martin
Program Supervisor
360-725-4476
Shannon.Martin@k12.wa.us
ESD 112, 113, & 114



Kristin Percy Calaff
Director of Multilingual Education
564-999-3144
Kristin.PercyCalaff@k12.wa.us



Sue Connolly
Program Supervisor
360-522-0001
Sue.Connolly@k12.wa.us
ESD 105 & 123

Check-in Time

Please feel free to join a Breakout Room:

- WIDA Screening (Kristin)
- Policies & Practices Guide and Grants (Sue & Shannon)
- WIDA Professional Learning (Virginia & Katie)