



# WOODLAND ELEMENTARY SCHOOL

## WEEKLY NOTES

### May 1, 2019

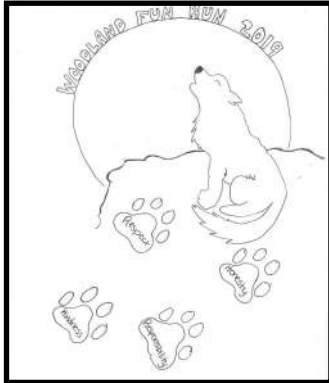
- Timber Rattler ticket vouchers for Woodland Family night on Thursday, May 30th were sent home with participating students last week. Please click [here](#) to redeem your ticket voucher and order additional tickets. **Tickets must be purchased online by May 20th.**
- The next Woodland School spirit day is on Friday, May 3rd and the theme is crazy socks. The Woodland PTO will be popping popcorn for all students. Please click [here](#) if you can help out on Friday morning. Thank you!
- **ATTENTION 4TH GRADE PARENTS!** Woodland Intermediate new student orientation will be on Tuesday, May 7th from 6:00 pm until 7:00 pm in the Woodland gym. Students participating in band should plan to arrive with their parents at 5:00 pm in the Woodland Commons for a short informational meeting. Please see the attached flyers for more details.
- Friday, May 10th, is a 12:00 pm release for all elementary students.
- Save the date! Also on Friday, May 10th, the Woodland PTO is sponsoring breakfast with a buddy in the commons from 7:30 am until 8:30 am. Volunteers are needed to help make this event successful. Please click [here](#) to sign up if you can help out. Thank you!
- Woodland Elementary School Culver's night will be on Monday, May 13th from 5:00 pm until 8:00 pm.
- Please keep saving your aluminum cans for the 10th annual Woodland Can Drive to be held the week of May 6th to May 10th. The can drive will conclude with a fun family brat fry on **Friday** evening, May 10th. All proceeds from cans turned in and sales will go to our UNLESS cancer fundraiser. We are in need of many donations to help make this event a success. Please click [here](#) to access the sign up genius if you are able to help out with this exciting school event. All donations should be to school by 3:30 pm on Friday, May 10th.
- On Thursday, May 16th, 2nd grade will going on a field trip to the 1,000 Island Nature Preserve.
- Mark your calendar for the Woodland Elementary end of year carnival! The carnival will be held on Thursday, June 6th. If you are interested in volunteering that day, please click [here](#) to sign up. Also, if you are interested in joining your child for lunch, please see the attached lunch order form. Thank you!
- The Woodland PTO Fun Run Committee is looking for volunteers to help with the 2019 Fun Run to be held on Friday, October 4, 2019. There are various dates that volunteers are needed. Please click [here](#) to sign up if you can help out. Thank you!
- As we prepare for the 2019-2020 school year, you will once again be asked to complete the Annual Update through your Infinite Campus portal. The **Annual Update** can be completed **starting AUGUST 1st** and ALL families must complete it each summer. Also, please remember that it is important to keep your family's contact information up-to-date and you can do that any time in your Infinite Campus portal. Please let us know if you have any questions. Thank you!
- It's that time of year again...time to think about the easy way to buy back to school supplies! Please click [here](#) to get started with your order from 1st Day School Supplies. Orders are due by June 15th.
- Please see the attached flyer or visit the KASD website and check out the [Community Events](#) page for more great opportunities and activities for your family.

# Woodland PTO News

## 2019 Fun Run T-Shirt Design Contest Winner

Congratulations to Sainailya A. for submitting the winning design in the 2019 Woodland School Fun Run T-Shirt Design Contest!

Sainailya's design will be featured on the t-shirts given to all students to wear on the day of the run. Thank you to Tom's Drive-In for providing the shirts!



## Elementary Breakfast with a Buddy

Elementary students and their families are invited to Breakfast with a Buddy on May 10 from 7:30 am to 8:30 am in the cafeteria. Complimentary continental breakfast items such as Dunkin' Munchkins, croissants, bananas, gogurt, milk and juice, will be served buffet style.

Dunkin' coffee and assorted creamers will also be available.

## Woodland Spirit Day

All students are invited to wear their crazy socks on May 3 for Spirit Day!



Support Woodland School by dining at Culver's on Calumet Street from 5-8 pm on the following dates:

Elementary Students: May 13  
Intermediate Students: May 20



The final PTO meeting of this school year is set for May 21 at 6:30 pm. Elections will be held for next year's board. Free childcare is provided.

*Please join us!*

## Elementary End of Year Carnival

The end of year carnival for elementary students will be held on June 6. Volunteers are needed for this event. Click [here](#) to sign-up!



# Unless



## Brat + fry + Bake Sale!

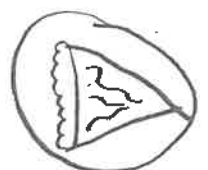
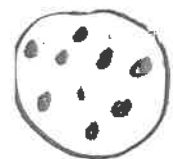
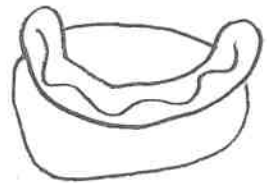


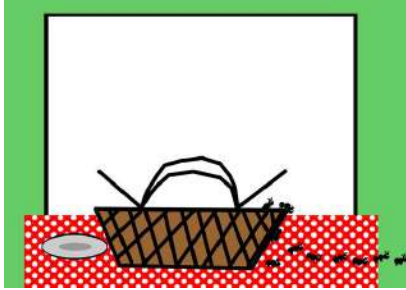
When: Friday, May 10<sup>th</sup>, 5pm - 7pm.

What: Brats, hot dogs, hamburgers,  
Ice cream truck, and baked goods!

Why: To help support Unless!

Where: Woodland School, Lunch room.





## Come One, Come All!

Please join us for lunch on the last day of school! If you would like to join your Woodland student for lunch, you **MUST PRE ORDER** a lunch through Chartwells.

### On the menu:

\_\_\_\_\_ Hamburger **or** Hot Dog \_\_\_\_\_  
Potato Chips  
Baked Beans  
Baby Carrots with Ranch  
Applesauce  
Sidekicks Frozen Juice Slushie  
Milk

The cost for each meal is \$3.75. The cost of an extra hot dog or hamburger is \$2.00. If your Woodland student will be eating hot lunch on this day, they will be charged the regular hot lunch rate.

To pre-order your lunch, please complete this form and make sure to enter the number of hamburgers or hotdogs on the lines above and return it to school by **Friday, May 17th**. Please make checks payable to *KASD*. You may also pay for your meals out of your child's lunch account fund.

Number of guests ordering lunch on June 6th. **Do not include your Woodland student in this number.**

\_\_\_\_\_ × \$3.75 = \_\_\_\_\_

\_\_\_\_\_ My payment is enclosed

\_\_\_\_\_ I would like this taken out of my child's hot lunch account

Student's name \_\_\_\_\_

Teacher \_\_\_\_\_

# WOODLAND INTERMEDIATE NEW STUDENT ORIENTATION

Tuesday, May 7, 6:00-7:00 PM  
Woodland Gym



All students in the Kimberly Area School District who will be attending 5th Grade at Woodland Intermediate School in the Fall of 2019 are welcome to attend our New Student Orientation.

The Orientation session will include a presentation, overview of schedules and classes, introduction of the Woodland Intermediate staff and a self-guided school tour.

*Note: Students interested in participating in band are asked to join Ms. Shimek and Mrs. Carpenter for a meeting from 5:00-6:00 PM in the Woodland School Commons.*







# Do Something Big!!! Join Band!

## Woodland Intermediate Band

April 2019

**For all students attending Woodland as 5<sup>th</sup> Graders**



Dear Parents/Guardian,

Soon, another school year will be ending. All of our 4<sup>th</sup> grade students will be moving to 5<sup>th</sup> grade. There are some exciting times ahead. With that in mind, it is time to think about the musical opportunity that your son or daughter has next year.

When students enter the 5<sup>th</sup> grade, they have the opportunity to begin instruction on a band instrument. As children grow, they need ways to express themselves individually as well as in a group. Playing in the band will provide the challenge to do both. Also, a child who learns to play an instrument learns discipline and cooperation with others. Band is something that your child can be a part of from 5<sup>th</sup> grade through high school.

Any students entering the 5<sup>th</sup> grade in the fall can be in the band program. However, they must enroll soon. **Band instruction begins in the month of August for two weeks. The dates of instruction are Aug. 5 – Aug. 16.** Lessons will be held at Woodland School. Students are able to choose from the following instruments: flute, clarinet, alto sax, tenor sax, trumpet, trombone, French horn, baritone horn, tuba and percussion.

*If your child is interested in being in the band next year, please complete the bottom of this letter by **Wednesday, May 1** and return it to your classroom teacher.*

Instrument try-outs will be starting the end of April. **Only those students who have returned their slip will be allowed to try out instruments.**

Together we will be able to make a choice as to what instrument would be suited for your child. Physical adaptability, previous musical experience as well as band instrumentation are the overall factors in the selection process. **There are no beginning band classes beyond 5<sup>th</sup> Grade. Therefore, now is the time to start band if your child is at all interested in being a part of this program.**

To fully inform parents and students about our program, **a meeting is scheduled for Tuesday, May 7, 2019 at 5:00 p.m.** before the Woodland Open House. You and your child should plan on attending this meeting. Along with enrollment forms being handed out, instruments will be demonstrated and information on how to get an instrument will be discussed. After the band meeting, please stay for the open house.

Hope to see you there!

Ms. Shimek--Woodland Band Instructor  
mjshimek@kimberly.k12.wi.us

Mrs. Carpenter-Woodland and Mapleview Band Instructor  
kcarpenter@kimberly.k12.wi.us

**Tuesday, May 7, 2019 at 5:00  
Woodland Intermediate School  
Band Informational Meeting**

---

**Please Return Bottom Portion by Wednesday, May 1, 2019.**

\_\_\_\_\_ I am interested in having my child in band. Please schedule my son or daughter for an instrument try-out.

\_\_\_\_\_ I am **not** interested in having my child in band. (I realize this is my child's only opportunity for beginning band.)

Student's Name \_\_\_\_\_ School \_\_\_\_\_

Homeroom Teacher \_\_\_\_\_ School Next Year \_\_\_\_\_

Phone No. \_\_\_\_\_ Email \_\_\_\_\_

Parent's Signature \_\_\_\_\_

# Woodland School Library Summer 2019 Book Checkout



Dear Parent/Guardian:

We will be allowing library books to be checked out for the summer months from the Woodland School Library. For those students **5K- 5<sup>th</sup>** grade who would like to get books to read over the summer and have parent/guardian permission, they will be able to check out up to 10 books from the library.

In order for students to check out books for the summer, they will need to have the permission slip on the bottom of this sheet signed and returned to the library no later than Friday, May 24, 2019. Books for the summer will be checked out the week of May 27th on your child's library day. We will provide a book bag for the books, please make sure your child returns the books in this bag on the first day of school.

If you have any questions on the summer library check out, please don't hesitate to email me at [lbrigman@kimberly.k12.wi.us](mailto:lbrigman@kimberly.k12.wi.us) or give me a call 788-7900 ext. 2338.

Mrs. Brigman-LMC Director

---

Please detach and return to school no later than Friday, May 24, 2019

## Woodland School Library Summer 2019 Book Checkout Permission Form

Student Name: \_\_\_\_\_ Current Teacher: \_\_\_\_\_

**Grade for 2019-20 School Year** \_\_\_\_\_

The above named student has my permission to checkout **up to 10 books** from the Woodland Elementary/Intermediate School Library for the summer. These books and book bag will be returned on the first day of school.

Parent/Guardian Signature: \_\_\_\_\_

# Upcoming COMMUNITY EVENTS

- [FORE! Our Kids Golf Outing](#), June 13, 2019 at High Cliff Public Golf Course
- American Red Cross [Free Smoke Alarm Installation Event](#) ,Saturday, May 4, 2019
- [Kimberly High School Car Show](#): Saturday, May 18, 2019,
- Kimberly Area Running Club [Family Fun Run Series](#) June 9, June 23, June 7 - run one, or run them all!
- Summer 2019 [YMCA Camp Nan A Bo](#) Sho Flyer
- [Upham Woods Summer Camp](#) June 30 - July 3, 2019
- Kimberly Park and Recreation [Summer Program Guide](#)



# The **BEST** Way to Buy Back-to-School Supplies!

**Click Here to  
Order Now!**

**Order by June 15th, 2019**

✓ The Exact School Supplies  
Your Teacher Requested

✓ Name Brand Products Like:



mead

AVERY

**TICONDEROGA**



**Pre-Order Today at: [www.1stDaySchoolSupplies.com](http://www.1stDaySchoolSupplies.com)**





**By learning through dialogue and play in 4K, our students start here and excel here.**

***Now accepting 4K and new 5K registrations for next school year!***

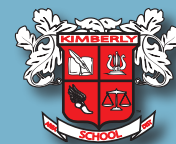
Our highly qualified teachers are early childhood experts whose goal is to engage our youngest students through dialogue and play-based learning.

At the 4K Center for Literacy, students build a strong foundation to continue their studies in Kimberly.

Wrap around care options are also available.

We are accepting new kindergarten registrations and open enrollment applications for next school year.

Help us spread the word to families you know!



**Kimberly Area  
School District**

**Is your Minimaker ready to start here and excel here?**

**Full-service 4K Center • Full-day 5K in Elementary Schools**

*Open enrollment applications accepted until April 30, 2019*

**Learn more about Registration and Open Enrollment:**

**[www.kimberly.k12.wi.us](http://www.kimberly.k12.wi.us) • (920) 788-7900**

** Start Here,  
Excel Here.**

The Kimberly Area School District does not discriminate on the basis of race, color, religion, national origin, ancestry, creed, pregnancy, marital status, parental status, sexual orientation, sex, (including transgender status, change of sex or gender identity), or physical, mental, emotional, or learning disability ("Protected Classes") in any of its student programs and activities.

# KIMBERLY AREA SCHOOL DISTRICT

## PARENT CALENDAR

### 2019-2020

#### September 2019

M	T	W	TH	F
NS	3	4	5	6
9	10	11	12	E2
16	17	18	19	20
23	24	25	26	AM
30				

#### October 2019

M	T	W	TH	F
	1	HS	3	4
7	8	9	10	E2
14	15	16	17	18
21	22	23	NS	NS
28	29	30	31	

#### November 2019

M	T	W	TH	F
				1
4	5	Q	7	8
11	12	MS	MS	AM
18	19	20	21	22
25	26	27	NS	NS

#### December 2019

M	T	W	TH	F
E2&C	E2&C	4	5	6
9	10	11	12	13
16	17	18	19	20
NS	NS	NS	NS	NS
NS	NS			

#### January 2020

M	T	W	TH	F
		NS	2	3
6	7	8	9	E2
13	14	15	16	17
20	21	22	23	Q/AM
27	28	I	I	31

#### February 2020

M	T	W	TH	F
3	4	5	6	7
10	11	12	NS	NS
17	18	HS	20	21
24	25	26	27	E2

#### March 2020

M	T	W	TH	F
2	3	4	5	E2
9	10	11	MS	13
16	17	18	19	AM
23	24	25	26	Q
30	31			

#### April 2020

M	T	W	TH	F
		1	2	3
6	7	8	9	NS
NS	NS	15	16	17
20	21	22	23	E2
27	28	29	30	

#### May 2020

M	T	W	TH	F
				1
4	5	6	7	8
11	12	13	14	AM
18	19	20	21	22
NS	26	27	28	EN

#### June 2020

M	T	W	TH	F
1	2	3	4	*SNOW DAY MAKE-UP

**\*If needed, snow day make-up will be on Friday June 5th**

**NS** No School

**AM** AM classes only (exception: No school for 4K) KHS dismissed at 11:31am, JRG & Intermediate dismissed at 11:20am, Elementary dismissed at 12:00pm

**E2** Elementary Early Release - Elementary dismissed at 2:00pm (Exception: 4K morning classes 8:45am - 10:45am, afternoon classes 11:45am - 1:45pm)

**EN** Elementary Noon Release - All Elementary students dismissed at 12:00pm (exception: No school for 4K)

**HS** High School Parent/Teacher Conferences - KHS students dismissed at 2:00pm

**MS** Middle School Parent/Teacher Conferences - JRG students dismissed at 2:00pm except on November 14th - students will have a full day of school

**I** Intermediate School Parent/Teacher Conferences - Intermediate students dismissed at 2:00pm

**E2&C** 4K-4th Gr. Parent Teacher Conferences; No school for 4K; Grades 5K-4th Grades dismissed at 2:00pm

**Q** End of quarter

# FAMILY RESOURCE INFORMATION/ OPPORTUNITIES TO DONATE

You may or may not be aware that the Kimberly Area School District has two clothes closets that are located in two of our schools. One of the clothes closets is at Maplevue Intermediate (920-788-7910) and the other is at Westside Elementary (920-739-3578). If you would like to donate or are in need of some assistance with resources, you can contact Maplevue or Westside. In addition to the clothes, Woodland is frequently being offered ways to support our families if they should fall upon economic hardship. Please reach out to your child's teacher or school counselor if you are in need of any assistance throughout the year.



# When to Keep Your Child Home

Children should be kept home from school when they don't feel well. It is important to get the rest they need to recover, and to prevent the spread of germs to other children and the staff. If you are unsure of when to keep your child home, please contact the school nurse or your family medical provider.

The following symptoms may suggest a communicable disease. Children who have the following symptoms should be kept home from school until a doctor has seen them, they no longer have symptoms indicating a communicable disease or they have received treatment for at least 24 hours for certain diseases.



## FEVER

An oral temperature of 100.4 or higher indicates a fever. If your child has a temp of 100.4 or higher at school he/she will be sent home. Your child must be fever free for 24 hours without the use of a fever reducer (Tylenol or Ibuprofen product) before he/she returns to school.



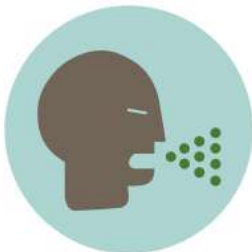
## SORE THROAT

If a fever is accompanied by a sore throat, stomach ache or head ache it may be strep throat. Strep throat is diagnosed by a throat culture obtained at a medical clinic. If your child is diagnosed with strep throat, your child must be on appropriate antibiotics for 24 hours and fever free for 24 hours without the use of a fever reducer (Tylenol or Ibuprofen product) before he/she returns to school.



## VOMITING/DIARRHEA

If your child has an episode of vomiting and diarrhea at school, he/she will be sent home. Anyone with these symptoms should stay home until symptoms are absent for 24 hours.



## COUGH

A cough may be a sign of many different illnesses. If a cough is accompanied by a fever, sore throat, body aches or any other symptoms you should keep your child home. Any cough that lasts for more than several days should be discussed with a doctor.



## SKIN LESIONS/SORES

Rashes and infected sores needed to be diagnosed by a medical provider. Many skin rashes such as impetigo, scabies, chicken pox, Fifth disease or Hand Foot and Mouth disease are very contagious. Students may return to school once the rash has been diagnosed and treated for 24 hours or cleared by a doctor. Open sores from illnesses such as chicken pox and impetigo may need to be covered at school with bandages for several days.



## OTHER

Symptoms that prevent the student from active participation in usual school activities OR student is requiring more care than school can safely provide.



# INFORMATION FOR PARENTS



## IF YOUR FAMILY LIVES IN ANY OF THE FOLLOWING SITUATIONS:

In a shelter



In a motel or campground due to the lack of an alternative adequate accommodation



In a car, park, abandoned building, or bus or train station



Doubled up with other people due to loss of housing or economic hardship

*Your school-age children may qualify for certain rights and protections under the federal McKinney-Vento Act.*

### Your eligible children have the right to:

- Receive a free, appropriate public education.
  - Enroll in school immediately, even if lacking documents normally required for enrollment.
  - Enroll in school and attend classes while the school gathers needed documents.
  - Enroll in the local school; or continue attending their school of origin (the school they attended when permanently housed or the school in which they were last enrolled), if that is your preference.
- \* If the school district believes that the school you select is not in the best interest of your children, then the district must provide you with a written explanation of its position and inform you of your right to appeal its decision.
- Receive transportation to and from the school of origin, if you request this.
  - Receive educational services comparable to those provided to other students, according to your children's needs.

*If you believe your children may be eligible, contact the local liaison to find out what services and supports may be available. There also may be supports available for your preschool-age children.*



#### Local Liaison

KASD Homeless Liaison  
Rob DeLain  
920.788.7905

#### State Coordinator

WI State Coordinator  
Kristine Nadolski  
608.267.7338

If you need further assistance with your children's educational needs,  
contact the National Center for Homeless Education:

1-800-308-2145 ★ [homeless@serve.org](mailto:homeless@serve.org) ★ <http://nche.ed.gov>





# Be a Sub!



## Join our team as a Sub!

Do you enjoy working with children while maintaining a flexible work schedule? Have you considered becoming a substitute teacher?

The Kimberly Area School District is seeking talented Substitute Teachers who want to join a team of ambitious professionals who help all students succeed. Sometimes, our educators are away from their classrooms for things like professional development or when they are ill. That's when we need talented individuals to continue providing a high-quality education to our students.



### Qualifications:

- **Current Wisconsin Educator License**
- **-Or- Substitute Teacher Permit.**
- Have an **Associate's Degree** or **Bachelor's Degree** but **not a Substitute Teacher Permit?** Contact us at (920) 788-7900 to learn more about pursuing training to obtain a Substitute Teacher Permit.

Substitute Teachers new to KASD are supported by helpful District staff at each building. The District uses an online Substitute Teacher System (AESOP) where you can view and customize subbing positions you are most interested in for your subbing career. ***KASD offers a competitive daily pay rate for our substitute teachers.***

Are you ready to join a team of talented professionals who help students become community, college and career ready? Complete an application through WECAN (Wisconsin's K-12 hiring website) by visiting <https://services.education.wisc.edu/wecan>.

**Learn more about the Kimberly Area School District at**  
**[www.kimberly.k12.wi.us/careers](http://www.kimberly.k12.wi.us/careers)**

The Kimberly Area School District does not discriminate against candidates on the basis of race, color, creed, marital status, sex (including transgender status, change of sex, sexual orientation, gender expression, gender transition, gender identity or sexual identity), pregnancy, ancestry, political belief or activity, military or veteran's status, arrest or conviction record, use or non-use of lawful products, religion, national origin, age, disability, or any other status protected by law. Concerns or questions should be directed to the District's Compliance Officer, the Director of Human Resources, at Kimberly Area School District, 425 S Washington Street, Combined Locks WI 54113. We are an equal opportunity employer.