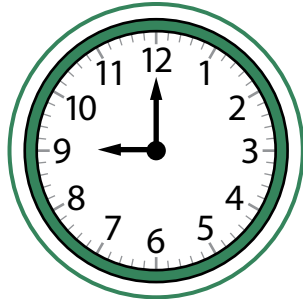


## Tell and Write Time

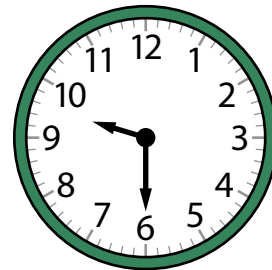
Name: \_\_\_\_\_

**Prerequisite:** Tell Time to the Half Hour

**Study the example showing how to tell time.**  
**Then solve Problems 1–6.**

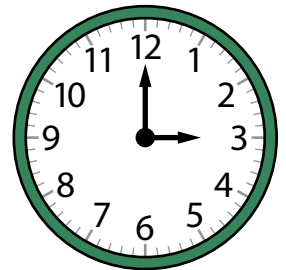
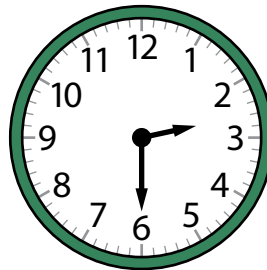
**Example**Circle the clock that shows **9:00**.Say: **9 o'clock**

The hour hand points to 9.  
 The minute hand points to 12.  
 So this clock shows 9:00.

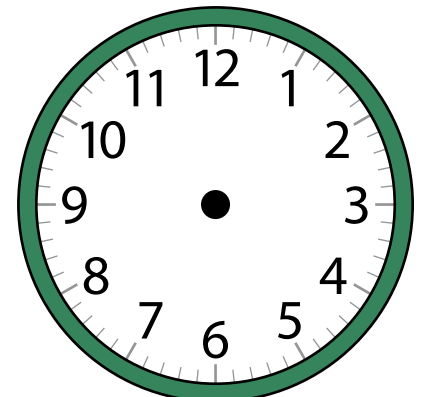


The hour hand points halfway  
 between 9 and 10. The minute  
 hand points to 6. So this clock  
 shows 9:30.

- 1** Circle the clock that shows 2:30.

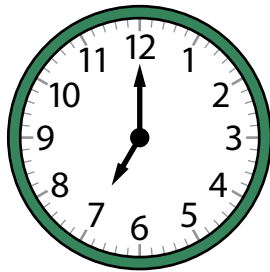
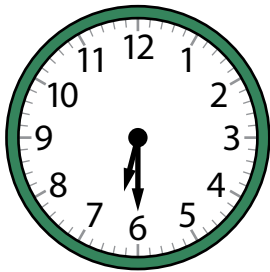
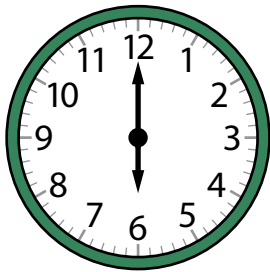


- 2** Read the digital clock. Draw the hands on the other clock to show the same time.

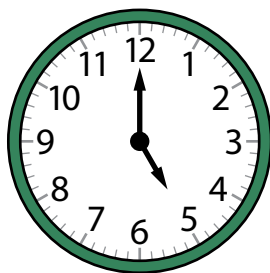
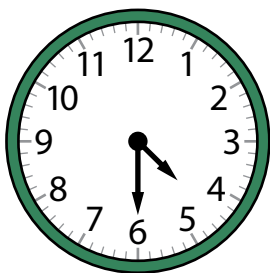
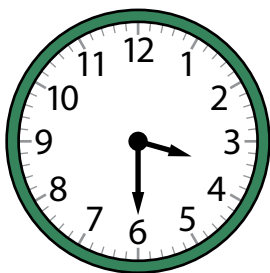


## Solve.

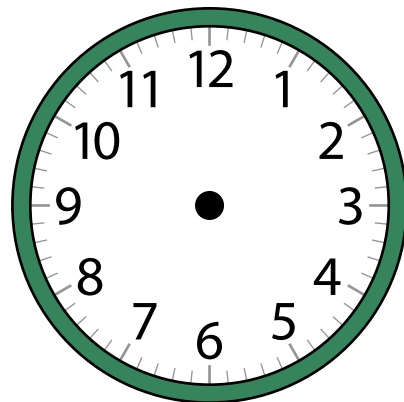
- 3 Circle the clock that shows 7:00.



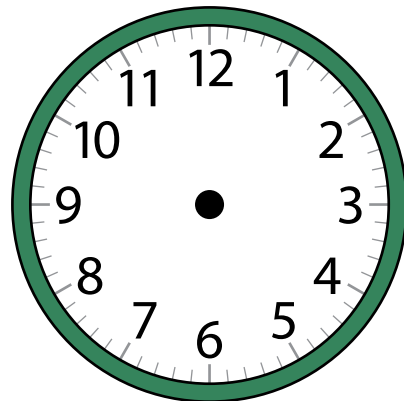
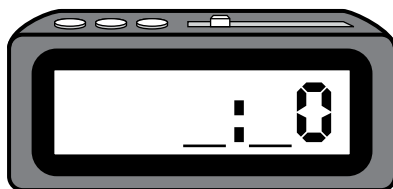
- 4 Circle the clock that shows 3:30.



- 5 Read the digital clock.  
Draw the hands on the other clock to show the same time.



- 6 It is five o'clock.  
Fill in the correct time on the digital clock. Draw the time on the other clock.



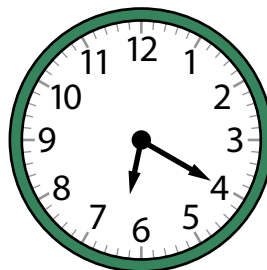
## Tell and Write Time

**Study the example showing how to tell and write time. Then solve Problems 1–6.**

**Example**

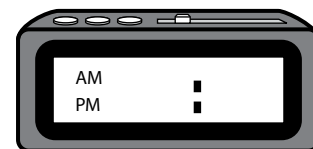
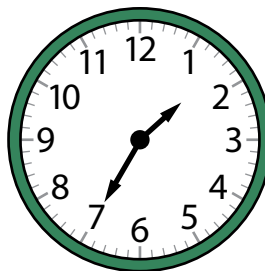
The first clock shows when Lil started eating dinner. Show the same time on a digital clock.

- The minute hand points to 4. So skip count by five 4 times to find the number of minutes.
- Dinner is in the evening. Draw a dot on the digital clock next to PM.

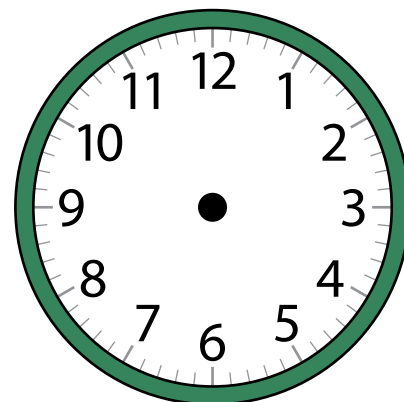


**PM** means the hours from noon to midnight.

- 1** Gino went on a picnic in the afternoon. The first clock shows when the picnic started. Show how the time would look on a digital clock. Be sure to mark AM or PM.

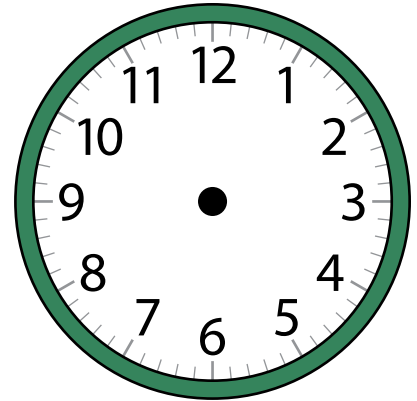


- 2** Nima's soccer team plays on Sunday mornings. Her first game started at the time shown on the digital clock. Draw the same time on the other clock.

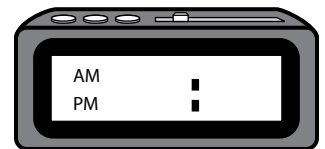
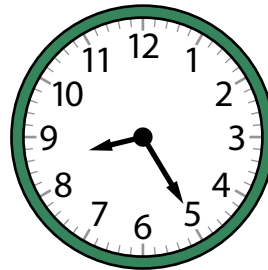


## Solve.

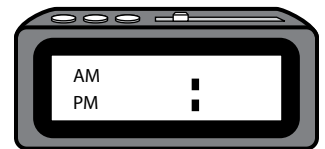
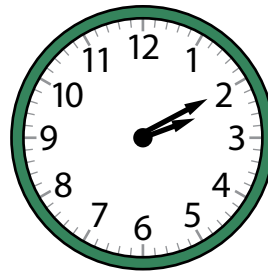
- 3 Bryce had a piano lesson after school. His lesson ended at the time shown on the digital clock. Draw the same time on the other clock.



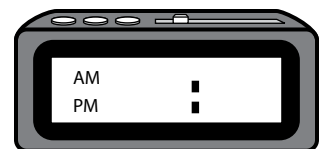
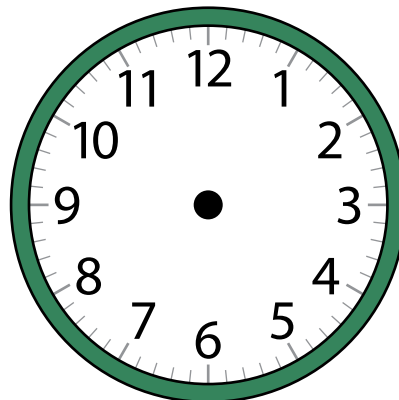
- 4 The first clock shows when Nadya brushed her teeth before school. Show how the time would look on a digital clock. Be sure to mark AM or PM.



- 5 The first clock shows when Mr. Wade's class started recess. Show how the time would look on a digital clock. Be sure to mark AM or PM.



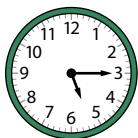
- 6 Eric called his aunt at 10:15 in the morning. Draw hands on the clock to show 10:15. Then write the time on the digital clock. Be sure to mark AM or PM.



## Tell and Write Time

## Solve the problems.

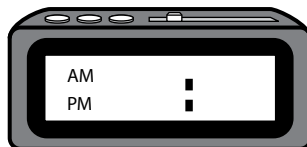
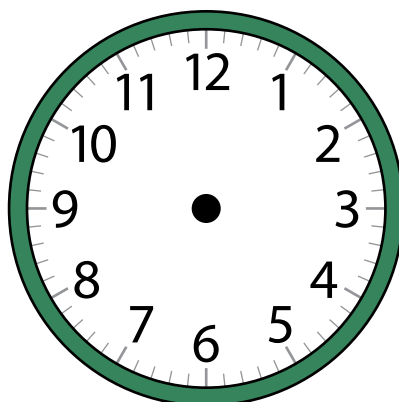
- 1** Luis gets home from school at 3:25. Which clock shows the time Luis gets home? Circle all the correct answers.

**A****B****C****D**

What two numbers will the hour hand be between? Should the digital clock show AM or PM?



- 2** Justin finishes art class at 2:40 in the afternoon. Draw hands on the clock to show 2:40. Then write the time on the digital clock. Be sure to mark AM or PM.



Is the hour hand or minute hand longer? How can you tell if the time is AM or PM?



- 3** Which number does the minute hand point to when a clock shows 5:10? Circle the correct answer.

**A** 10**C** 3**B** 5**D** 2

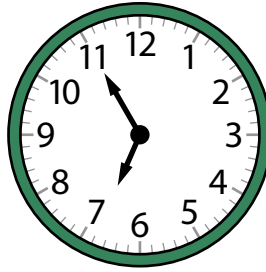
Can you draw a picture to help you?



## Solve.

- 4 Lita's mom wakes her up to get ready for school at the time shown on the clock.

Which digital clock shows the time Lita's mom wakes her up? Circle the correct answer.



Where does the hour hand point when it is almost the next hour?



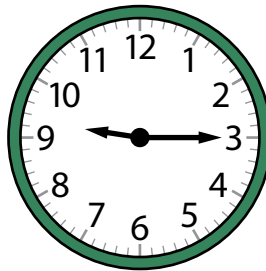
**A**

**B**

**C**

**D**

- 5 Rory has dance class on Saturdays at the time shown on the clock. What time does Rory have dance class? Circle the correct answer.



Which hand tells the minutes?



**A** 3:09

**C** 9:15

**B** 3:45

**D** 9:30

Mike chose **B**. This is wrong. How did Mike get his answer?

---

---

---

---