



Enrollment Update

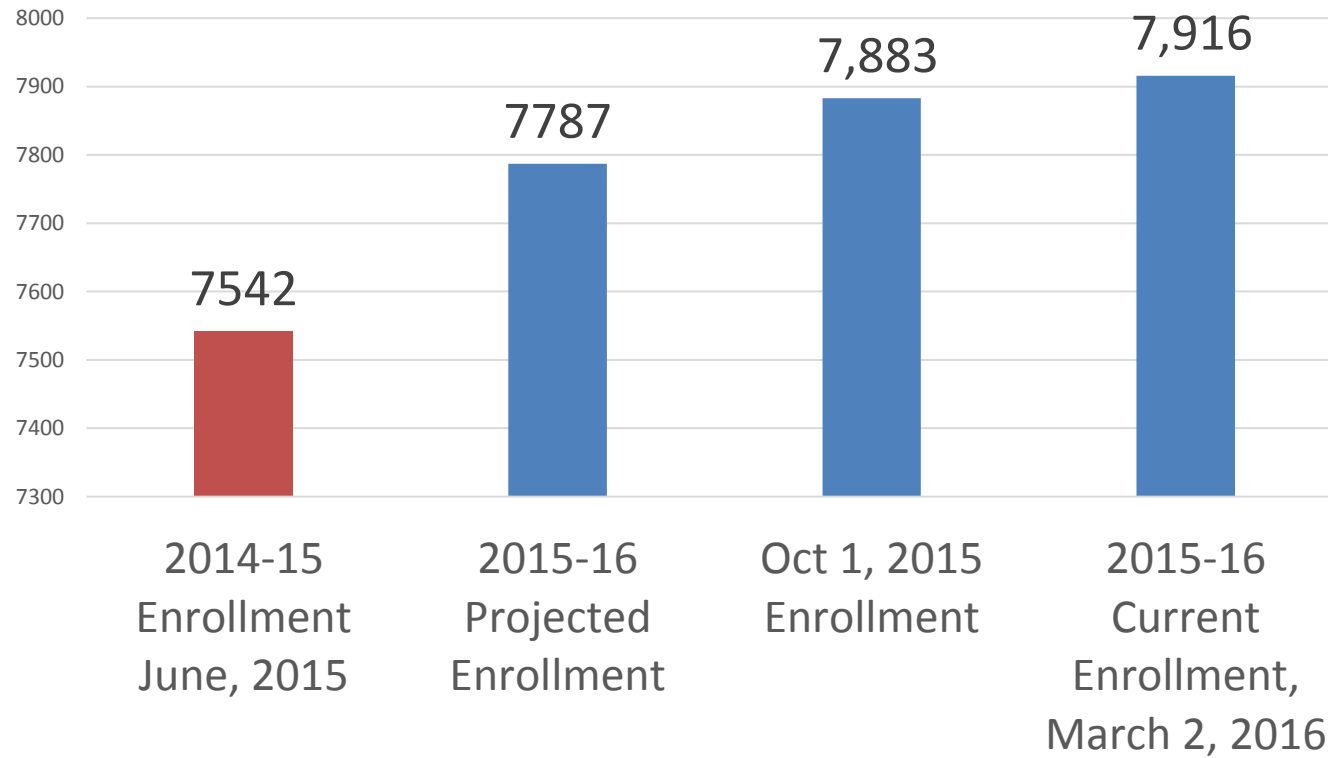
March 7, 2016





2015/16 Enrollment

2015-16 Enrollment Trend





2015/16 Enrollment

+ 250

Projected
Enrollment

+ 374

Current
Enrollment

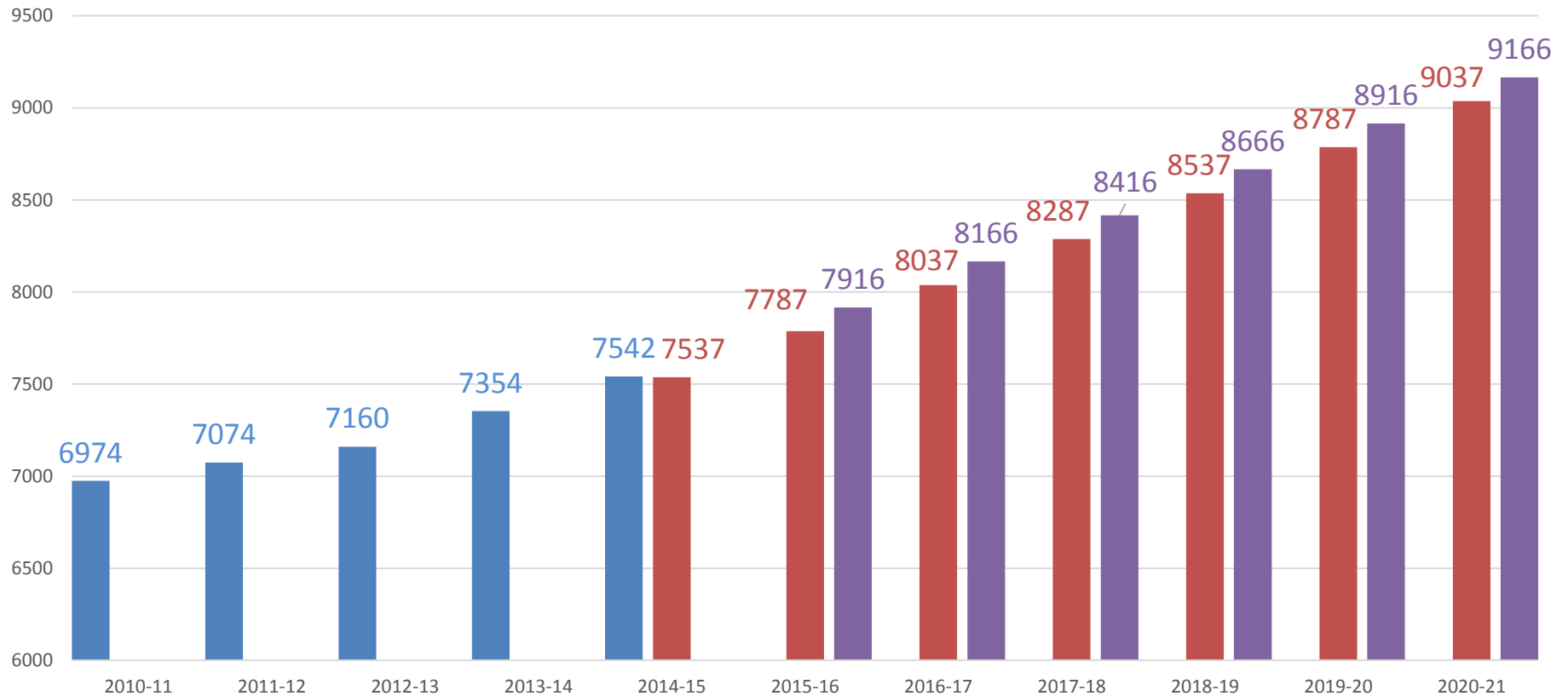


Grainwood Enrollment

341



2015/16 Enrollment



■ Historical

■ 2015-16 Demographic Study

■ Current Enrollment plus projected 250 student growth



Questions





School Board, Regular Meeting

March 7, 2016





Our Framework for the Future



Mission Our core purpose

Our mission is to educate all learners to reach their full potential as contributing and productive members of our ever-changing global community.

Core Values

What drives our words and actions

Partnership: Collaboration of resources and talents to achieve high mutual goals for the benefit of all

Innovation: Creative problem solving connecting creativity with usefulness

Respect: Valuing ourselves, each other and our world across all differences

Wise Stewardship: Developing and effectively using our knowledge, human, financial, physical and environmental resources

Accountability: Holding ourselves and each other accountable for our actions and words

Strive for Excellence: Committing to continuous learning and improvement

Vision

A compelling educational picture of what we intend to create

Sustainable environmental focus recognized at the state and national levels

Challenging, diverse and personalized learning

A culture of excellence fostering a love of learning and appreciation of the arts and activities

Safe and respectful schools

A district of stakeholder partnerships

Technology enhancing instruction, communication and administration

Innovative and flexible staffing through wise financial stewardship

Strategic Directions

Goals that guide educational programs, services and applied resources

Increasing measurable student growth and achievement

Continue financial accountability to community while using available resources to educate students and maintain class-size targets

Expand innovative programming to meet family needs

Expand and embed environmental focus across the district

Integrating technology for teaching and communications; increasing capacity to set standards for all learners using 21st century skills

Engage parents, families and community to strengthen a culture of respect and inclusion



Process to Study Enrollment Growth

425

STUDIED:

Demographic Projections

E-12 Capacity Study

All-Day Kindergarten

Innovative Programs

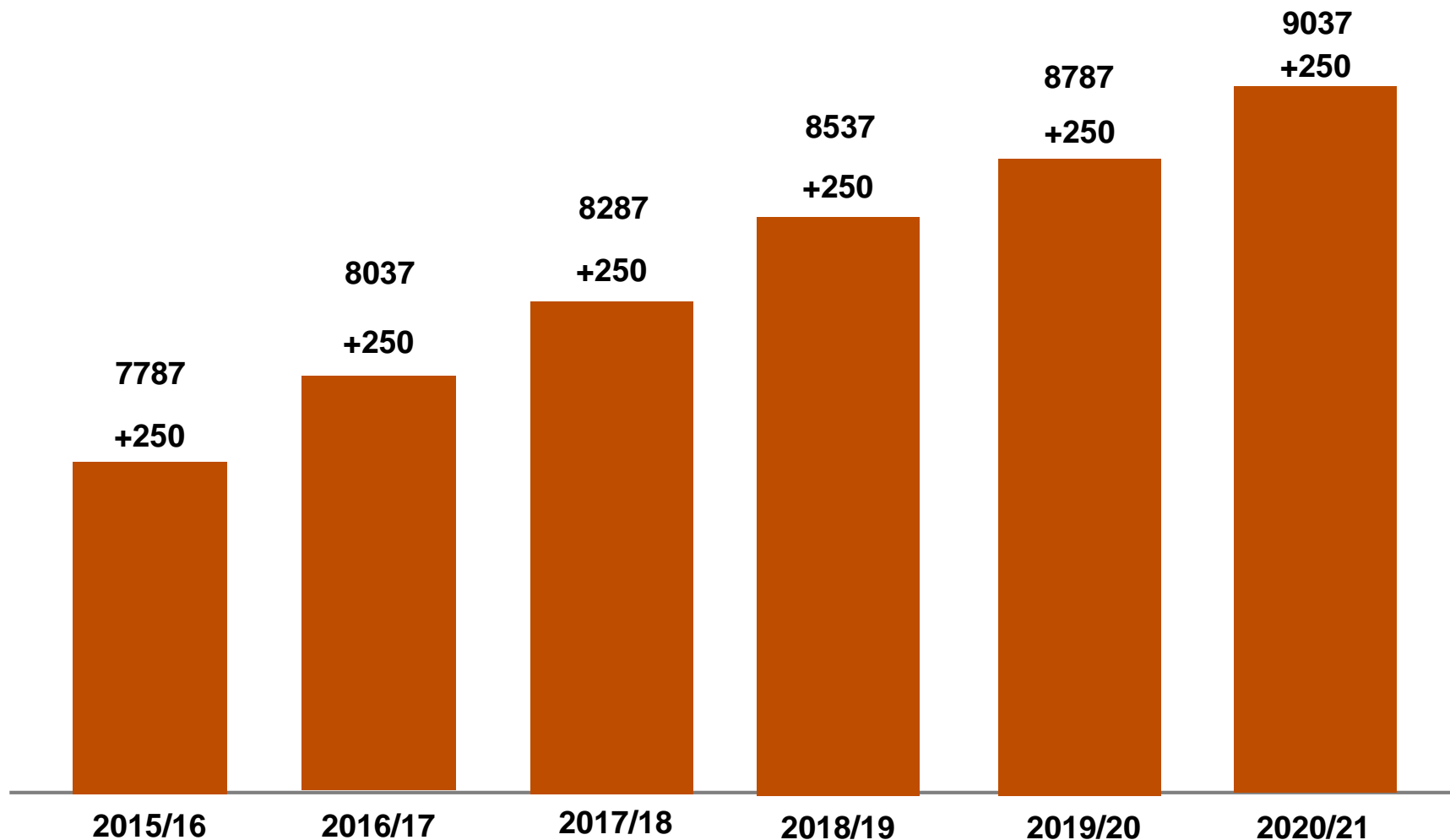
Current Enrollment

Open Enrollment

City Building Permits



1,500 more students are expected by 2021



250 additional students every year

Source: Schoolfinances.com, 2015 Demographic Study

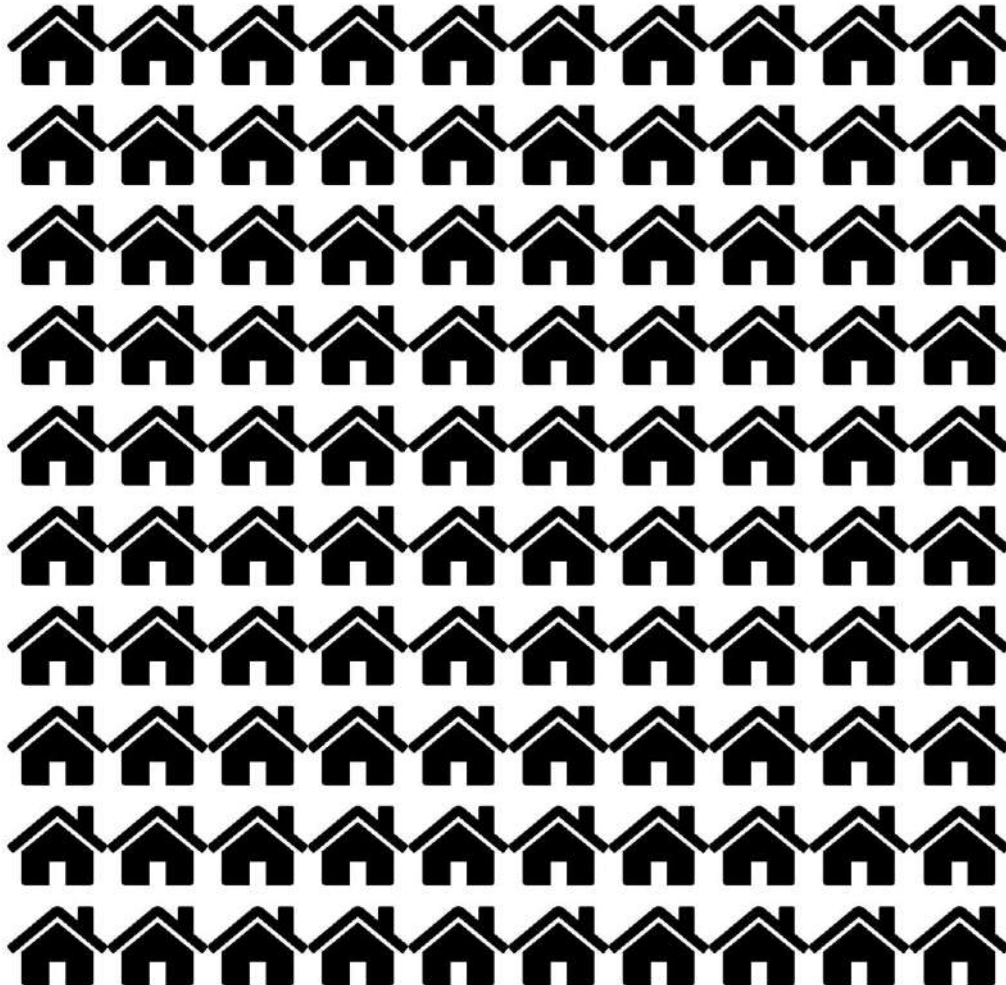


New Residential Developments

5 Year Projections

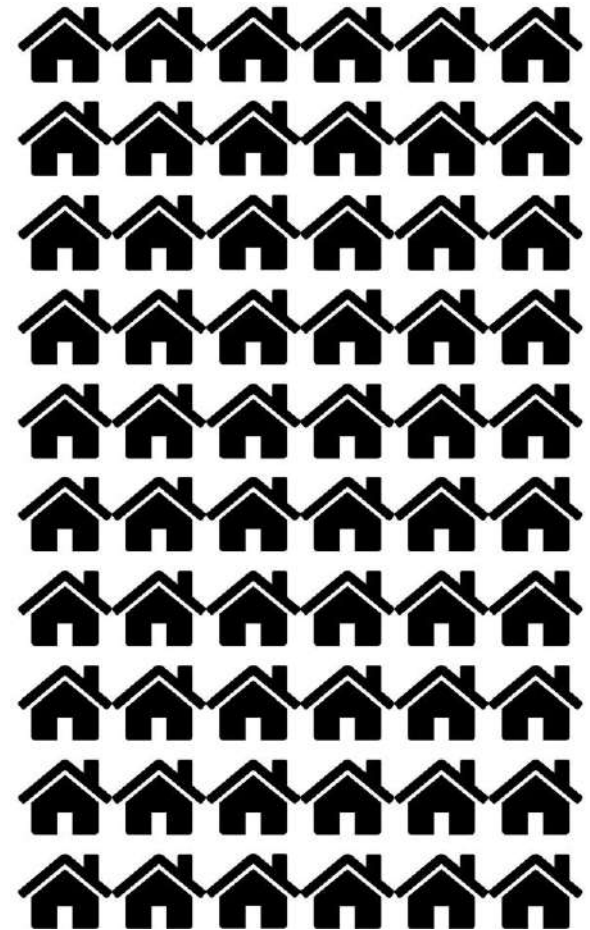
Prior Lake, Total Units

825



Savage, Total Units

400



Sources: City of Prior Lake, City of Savage



Districtwide Facilities Plan

Space for Students

Technology for Teaching

Security for Schools



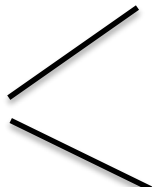
Community Input



2 Community Information Nights
Phone Survey
Comment Cards
Emails



One Question on the Ballot

1 Question  Bond for Building
Technology
Levy





Space for Students



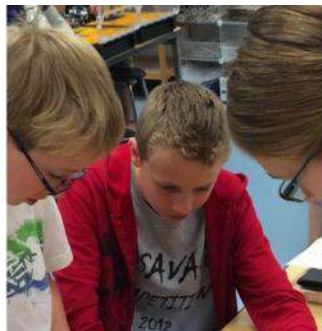
Elementary

New K-5 Elementary School

Additions and renovations at every school

Space for SAGE, La ola del lago and preschool

Space for Special Education



Middle School

Additions and renovations at both schools

Expand and renovate Twin Oaks Auditorium

Improve site safety in parent drop-off area



High School

New Area Learning Center

Classroom and office additions

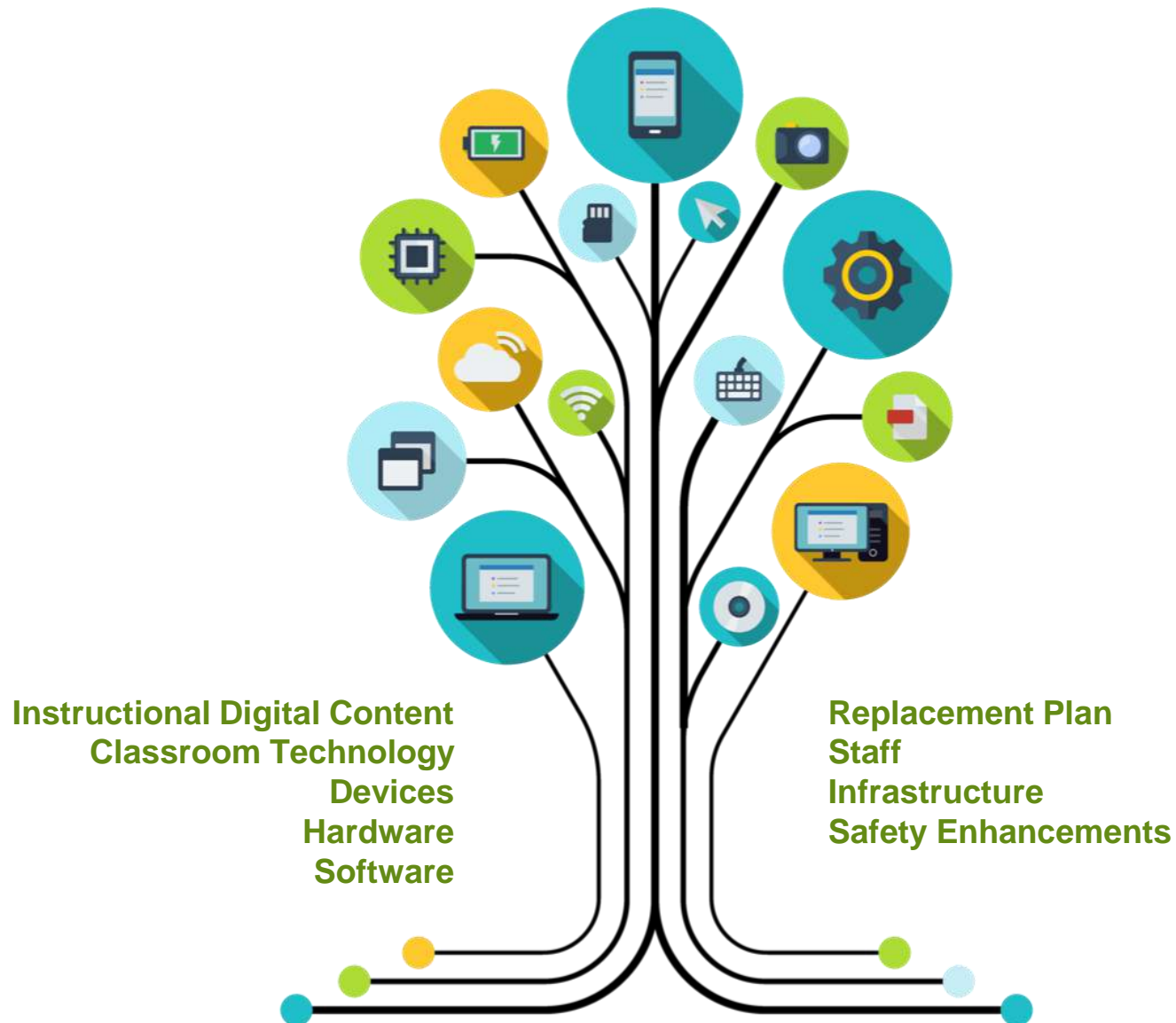
Secure front entrance

Expanded facilities for curricular & co-curricular athletics and activities

Expanded kitchen & cafeteria



Technology for Teaching



A map of Minnesota school districts is shown, with several districts highlighted by callout boxes indicating estimated costs. The districts and their costs are:

- Edina: \$4,500,000
- Eastern Carver Co.: \$2,500,000
- Shakopee: \$2,500,000
- Burnsville: \$2,500,000
- Jordan: \$0
- PLSAS: \$0
- Lakeville: \$2,000,000
- R.A.V.E.: \$5,000,000

The map also shows other districts with their respective numbers, such as St. Francis (15), Forest Lake (831), Anoka-Hennepin (11), Osseo (279), Centennial (12), Spring Lake Park (16), Mounds View (621), White Bear Lake (624), Mahtomed (832), Stillwater (834), St. Paul (625), Roseville (623), North St. Paul (622), South Washington County (633), Hastings (200), Randolph (195), Farmington (192), Lakeville (194), New Prague (721), Belle Plaine (719), Jordan (717), Shakopee (720), Eden Prairie (272), Bloomington (271), Richfield (280), Airport (197), West St. Paul (196), St. Paul (195), South St. Paul (194), River Grove Heights (193), Rosemount-Apple Valley-Eagan (198), Burnsville-Eagan-Savage (191), Prior Lake-Savage (719), Minnetonka (276), Hopkins (270), St. Louis Park (283), Robbinsdale (281), Wayzata (284), Orono (278), Watertown-Mayer (111), Naconia (110), Central (108), and St. Francis (15).

R.A.V.E.
\$5,000,000



Security for Schools



New entrance at PLHS
Visitor screening system
Security cameras for all schools



One Question for Two Funding Streams

Tax Impact

\$31/month

\$300,000
(Average Home Value)

- **\$129 Million Bond Over 20 Years**
- **\$2.125 Million Per Year for a Technology Levy**



Referendum Summary

**We've Had A Thorough Process
We Listened To Our Community
We Are Presenting A One-Question Ballot**





Referendum Summary

Space for Students

Technology for Teaching

Security for Schools



School Board, Regular Meeting

March 7, 2016

