

**REASONS AND SUPPORTING DATA
FOR THE
CLOSURE OF
MALDEN ELEMENTARY SCHOOL
INTO PROPOSED
EASTERN KANAWHA COUNTY ELEMENTARY CENTER**

KANAWHA COUNTY BOARD OF EDUCATION

Prepared Pursuant to

**W. Va. Codes §18-5-13 and §18-5-13a and
WVBE Policies 6200 and 6204.**

**Kanawha County Schools
Under the direction and authority of
The West Virginia Board of Education (WVBE)**

**Public Hearing October 21, 2024
County Board Approval October 21, 2024**

This template (revised 3/16/22) is provided by the WVDE as a technical assistance tool for county boards to use in the preparation of their supporting documents for a proposed school closure or consolidation. This template does not reduce or eliminate the requirements found in WV State Code or WVBE Policy 6204 as they relate to school closures or consolidations. This document does not replace or supplant legal assistance provided by counsel engaged to represent the county.

Table of Contents

3.0. County Procedures	2
3.2. Executive Summary	3
3.2.a Enrollment	5
3.2.b. Facilities	9
3.2.c. Finance	15
3.2.d. Personnel	18
3.2.e. Transportation	21
3.2.f. Educational Program	23
3.2.g. Community	23a
3.3. & 3.4. Public Notices and Hearings	24
3.6. County Board Actions	27
3.6.a. Superintendent Verification of Board Actions	28
Appendix of Supporting Data	29

3.0. County Procedures

WVDE Application for school closure and/or consolidation

Kanawha County

Closure of Malden Elementary School into a proposed Eastern Kanawha County Elementary Center

Scheduled Date of Hearing: Monday, October 21, 2024, at 6:00 P.M.

Scheduled Date of County Board Vote: October 21, 2024, following the Hearing

County Procedures

This template shall be used to accumulate and present the data that is requested in Policy 6204 and W.Va. Code 18-5-13a to support the closure or consolidation of a WV public school.

The county shall prepare written reasons and supporting data concerning proposed school closings or consolidations to be submitted to the WVBE for approval in accordance with this policy and W. Va. Code §18-5-13a. The written materials shall:

- ☐ *be available for public inspection in the office of the county superintendent during the 30 days preceding the date of the public hearing; and*

Be delivered in duplicate to the:

- ☐ *principal of a school that is proposed to be closed or consolidated, and of any school which the county designates to receive the students who are relocated as a result of the closure or consolidation; and*
- ☐ *chair of the local school improvement council (LSIC) representing a school that is proposed to be closed or consolidated, and any school that the county designates to receive the students who are relocated as a result of the closure or consolidation.*
- ☐ *A copy of the notice shall be posted at all schools, bus garages, and maintenance areas in the county in conspicuous working areas, for all professional and service personnel to observe.*

Thomas E. Williams, Jr., Ed.D.

Superintendent

Date:

3.2. Executive Summary and Impact Statements

County Procedures

An executive summary shall be prepared including the following items that will summarize with page references to the county's documentation, as defined in section 3.1, those items listed and shall be provided to the WVDE School Facilities Services unit.

The Kanawha County Board of Education has experienced a loss in students over the past ten years. The overall student enrollment has decreased in enrollment by -17.8%. This represents a loss of 4,499 students from 2014/15 – 2023/24. In an effort to provide an equal and quality education to each student in Kanawha County the Kanawha County Board of Education proposes to consolidate services. This would not only save the Board of Education operating expense, but it would allow the county to provide an education curriculum that they currently cannot afford to provide for all students.

The Kanawha County Board of Education proposes to merge Malden Elementary School to the existing Proposed Eastern Elementary School, thus closing Malden Elementary School. The Merge would provide the following:

- The desire to meet the Economy of Scale guidelines of the SBA and the State Department of Education.
- Improving school transportation efficiency and complying with guidelines for length of bus rides for students to all facilities.
- Housing all students in permanently constructed facilities.
- Increasing the efficiency of operations of all facilities.

Enrollment 3.2.a.

Kanawha County has had a 16,712 decrease in population from 2014 through 2024. The student enrollment at Malden Elementary School has decreased by 64 students over the past ten years, and is projected to decrease by another 33 students over the next ten years. A proposed New Eastern Kanawha County Elementary Center would consolidate Malden Elementary School, Mary Ingles Elementary School, Belle Elementary School, and Midland Trail Elementary School. The student enrollment at Mary Ingles Elementary School, Belle Elementary School, and Midland Trail Elementary School has decreased by 141 students over the past ten years, and is projected to decrease by another 82 students over the next ten years. The merger of these four schools would benefit their student populations by decreasing operating expenses and providing a better learning atmosphere and curriculum for students.

Facilities 3.2.b.

Malden Elementary School is 2.8 miles from Proposed Eastern Elementary School. Malden Elementary School is in below average condition, with a 54.1% building utilization rate. A proposed Eastern Kanawha County Elementary Center would have an 85.1% building utilization rate. The existing facilities have been reviewed and evaluated during the recent CEFP process. The SBA form 134 Worksheets are shown in the Appendix of Supporting Data. The space Utilization is also listed for each facility.

3.2. Executive Summary and Impact Statements

County Procedures

Finance 3.2.c.

In an effort to provide an equal and quality education to each student in Kanawha County the board proposes to consolidate services. This closure and consolidation would save the Board of Education \$1,810,442.63 annually. Savings on maintenance and operating expenses on aging buildings that they currently do not have the finances to properly maintain.

Personnel 3.2.d.

The County Board of Education has attempted to reduce staff due to a loss in enrollment over the past ten years to meet the formula for professional and service personnel. The consolidation of the four elementary schools would result in a reduction of 23 Professional Personnel and 15 Service Personnel. Kanawha County will continue to follow the WVDE recommended guidelines on the number of employees but maintain the number of staff required to deliver the education programs made available to its students. Some Staff may be reduced due to the duplication of positions after merger.

Transportation 3.2.e.

There are no negative variances in any of the bus routes from the Malden and a proposed Eastern Kanawha County Elementary Center area. The routes will not exceed the thirty-minute guideline as outlined in the WVDE Policy 6200; et al. Detailed information is found on page eight of this document.

Educational Program 3.2.f.

Kanawha County Schools ensures an engaging educational environment for learners (students and adults) focusing on teaching and learning in the 21st century. Our mission statement is “to provide a world-class education that ensures success for every student in the 21st century. We Believe: All students CAN achieve. Quality teaching is the key to student success.”

Expectations of parents have evolved through the years, as society has changed. Safe environment, cleanliness, fiscal responsibility, and healthy lifestyles are important issues that are conducive to learning. Parents expect their students to obtain a quality education and to be able to function successfully in life.

3.2.a Enrollment

County Procedures

Enrollment and Population Table

Trends in student population growth or decline in the county for the previous 10 years.

Year	2013-2014	2014-2015	2015-2016	2016-2017	2017-2018	2018-2019	2019-2020	2020-2021	2021-2022	2022-2023
Total	28,076	27,604	27,339	26,335	26,230	25,757	25,387	24,799	24,164	23,714

Enrollment Table 1

Trends in student population growth or decline in the attendance area of the school targeted for closure or consolidation for the previous 10 years.

Malden Elementary School

Year	2013-2014	2014-2015	2015-2016	2016-2017	2017-2018	2018-2019	2019-2020	2020-2021	2021-2022	2022-2023
Total	216	254	233	244	232	231	187	174	160	152

Enrollment Table 2

Mary Ingles Elementary School

Year	2013-2014	2014-2015	2015-2016	2016-2017	2017-2018	2018-2019	2019-2020	2020-2021	2021-2022	2022-2023
Total	190	164	165	157	158	157	147	158	154	135

Enrollment Table 3

Belle Elementary School

Year	2013-2014	2014-2015	2015-2016	2016-2017	2017-2018	2018-2019	2019-2020	2020-2021	2021-2022	2022-2023
Total	283	287	273	262	255	264	288	285	286	291

Enrollment Table 4

Midland Trail Elementary School

Year	2013-2014	2014-2015	2015-2016	2016-2017	2017-2018	2018-2019	2019-2020	2020-2021	2021-2022	2022-2023
Total	249	239	233	226	228	224	188	168	150	155

Enrollment Table 5

Population characteristics, such as birth and death rates and age composition of population for the previous ten years, as provided by the most recent Census data for the county.

County Birth and Death Rates

Year	2011	2012	2013	2014	2015	2016	2017	2018	2019	2020
Birth Rate	11.2	11.6	11.7	11.4	10.9	10.5	10.5	10.3	9.8	9.6
Death Rate	12.4	12.5	13.0	12.8	13.4	13.5	14.2	14.8	14.1	16.7

Sources for data: West Virginia Department of Health & Human Resources Bureau for Public Health Statistics Center

Enrollment Table 6

3.2.a Enrollment

County Procedures

County Population Data

Year	Total Population	1 to 9	10 to 19	20 to 29	30 to 39	40 to 49	50 to 59	60 to 69	70 to 79	80 and over
2011	192,315	11.3%	11.2%	11.7%	12.9%	12.5%	17.0%	11.5%	7.0%	4.7%
2012	192,179	11.0%	11.7%	11.7%	12.4%	12.9%	15.9%	12.7%	7.2%	4.4%
2013	191,275	10.9%	11.6%	12.0%	12.9%	12.0%	15.9%	13.3%	6.2%	5.2%
2014	190,223	11.6%	10.7%	12.1%	12.1%	12.8%	15.8%	12.6%	8.0%	4.4%
2015	188,332	11.0%	11.2%	11.4%	12.4%	12.7%	14.0%	15.2%	7.4%	4.5%
2016	186,241	11.8%	10.2%	12.0%	11.7%	12.9%	15.3%	13.9%	8.5%	4.0%
2017	183,293	11.8%	10.9%	11.4%	11.8%	12.4%	13.0%	15.4%	8.2%	5.0%
2018	180,454	11.2%	10.4%	11.9%	11.7%	12.3%	14.3%	15.2%	8.2%	4.9%
2019	178,124	10.3%	11.3%	11.9%	11.9%	12.3%	13.5%	13.7%	9.8%	5.2%
2020	176,253	10.7%	11.1%	11.7%	12.1%	12.0%	13.3%	13.7%	9.6%	5.6%

Sources for data: West Virginia Department of Health & Human Resources Bureau for Public Health Statistics Center & United States Census Bureau

Enrollment Table 7

Projections of enrollment, by grade and school, in the affected attendance area, for the next ten years.

Malden Elementary School

Year	2023-2024	2024-2025	2025-2026	2026-2027	2027-2028	2028-2029	2029-2030	2030-2031	2031-2032	2032-2033
Pre-K	31	24	23	22	23	19	23	23	23	25
K	27	20	19	18	19	34	19	19	19	19
1st	33	28	22	21	22	20	22	22	22	22
2nd	26	32	21	21	20	21	19	21	21	21
3rd	12	23	28	18	18	18	18	17	18	18
4th	17	12	23	28	18	18	18	18	17	18
5th	25	17	12	23	28	18	18	18	18	17
Total	171	150	148	151	148	133	137	138	138	138

Sources for data :West Virginia Department of Education ZOOMWV

Enrollment Table 8

3.2.a Enrollment

County Procedures

Mary Ingles Elementary School

Year	2023-2 024	2024-2 025	2025-2 026	2026-2 027	2027-2 028	2028-2 029	2029-2 030	2030-2 031	2031-2 032	2032-2 033
Pre-K	18	16	15	14	15	14	16	16	16	16
K	28	20	20	19	20	18	21	21	21	21
1st	23	21	20	19	20	18	22	22	22	22
2nd	18	21	20	19	18	19	17	21	21	21
3rd	23	17	20	19	18	17	18	16	20	20
4th	21	20	15	18	17	16	15	16	14	18
5th	17	21	20	15	18	17	16	15	16	14
Total	149	136	130	123	126	119	125	127	130	132

Sources for data: West Virginia Department of Education ZOOMWV

Enrollment Table 9

Belle Elementary School

Year	2023-2 024	2024-2 025	2025-2 026	2026-2 027	2027-2 028	2028-2 029	2029-2 030	2030-2 031	2031-2 032	2032-2 033
Pre-K	35	23	21	20	21	19	23	23	23	23
K	34	40	37	36	36	34	40	40	40	40
1st	42	43	40	38	39	37	43	43	43	43
2nd	44	39	41	38	36	37	35	41	41	41
3rd	44	43	38	40	37	35	36	34	40	40
4th	38	44	43	38	40	37	35	36	34	40
5th	41	38	44	43	38	40	37	35	36	34
Total	278	270	264	252	247	239	249	252	257	261

Sources for data: West Virginia Department of Education ZOOMWV

Enrollment Table 10

Midland Trail Elementary School

Year	2023-2 024	2024-2 025	2025-2 026	2026-2 027	2027-2 028	2028-2 029	2029-2 030	2030-2 031	2031-2 032	2032-2 033
Pre-K	20	10	9	9	9	9	10	10	10	10
K	19	18	17	16	17	15	18	18	18	18
1st	23	18	17	16	17	15	18	18	18	18
2nd	20	24	18	17	16	17	15	18	18	18
3rd	21	21	25	19	17	16	17	15	19	19
4th	31	20	20	24	19	17	16	17	15	19
5th	30	30	19	19	23	18	16	15	16	14
Total	164	141	125	120	118	107	110	111	114	116

Sources for data: West Virginia Department of Education ZOOMWV

Enrollment Table 11

3.2.a Enrollment

County Procedures

Proposed Eastern Kanawha County Elementary Center

Year	2023-2 024	2024-2 025	2025-2 026	2026-2 027	2027-2 028	2028-2 029	2029-2 030	2030-2 031	2031-2 032	2032-2 033
Pre-K	-	-	-	-	-	63	72	72	72	72
K	-	-	-	-	-	84	98	97	98	98
1st	-	-	-	-	-	90	105	105	105	105
2nd	-	-	-	-	-	94	86	101	101	101
3rd	-	-	-	-	-	86	89	82	97	97
4th	-	-	-	-	-	88	84	87	80	95
5th	-	-	-	-	-	93	87	83	86	79
Total	-	-	-	-	-	598	621	628	639	647

Sources for data : West Virginia Department of Education ZOOMWV

Enrollment Table 12

Projection Method

Explanation of the projection method utilized addressing the relationship between the most recent Second Month Report, the Second Month Reports for the previous three years, and the most recent census data for the county.

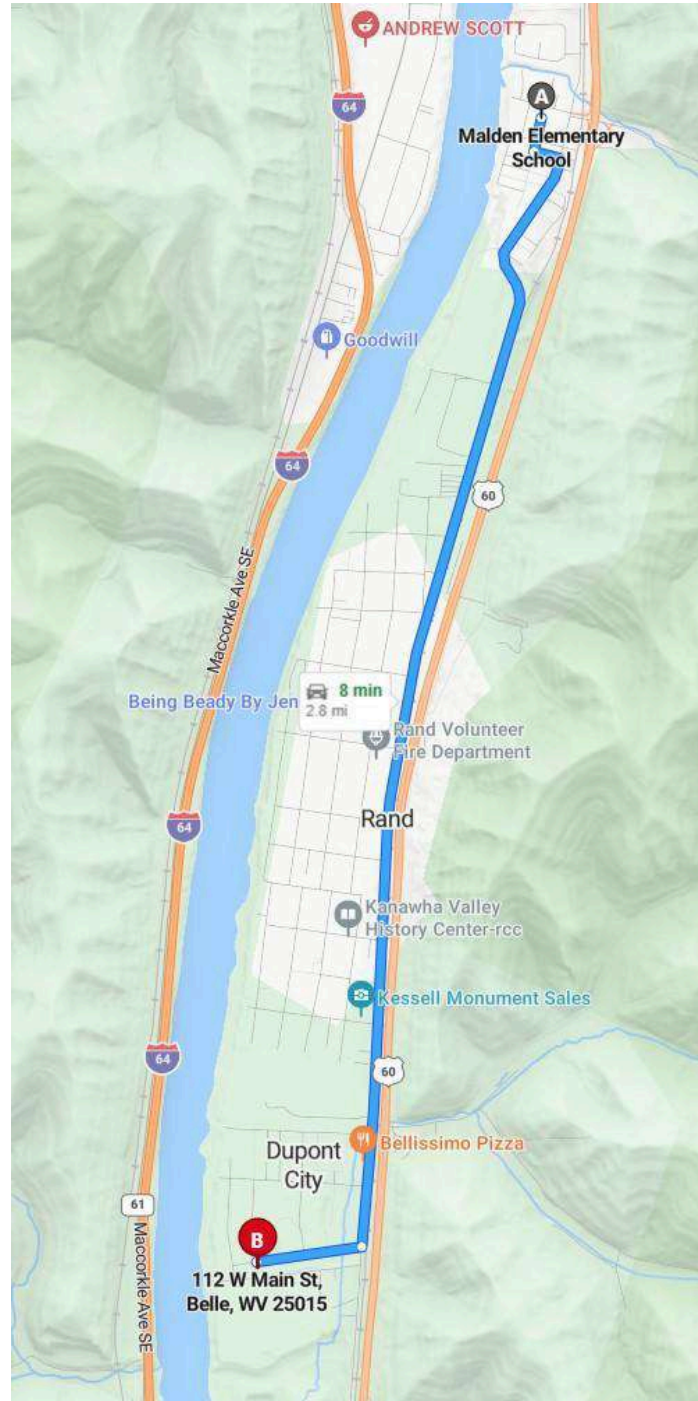
Kanawha County Schools uses the Cohort Survival Ratio Technique for enrollment projection. The source of the enrollment data for all schools is taken from the second month report that is submitted to the West Virginia Department of Education. Enrollment data is kept in the reporting for the past ten years and it assists in making future projections. Resident live births and computation of survival ratios are factors that are also considered for enrollment projection.

3.2.b. Facilities

County Procedures

Descriptive Maps

Maps showing the school(s) targeted for closure or consolidation and the school(s) that the county designates to receive the students with mileage indicated between and among schools affected. The map shall include a legend indicating the grade configuration, student enrollment, and utilization percentage for each school on the map.



Map 1

School	Grade Config.	Current or Anticipated Enrollment	Utilization	Distance to School A	Distance to School B	Distance to New School C
Malden Elementary School (Closing School)	PK-5	316	54.1%	-	-	2.8 miles
Proposed Eastern Kanawha County Elementary Center (Receiving School)	PK-5	598	85.1%	2.8 miles	-	-

Facilities Table 1

3.2.b. Facilities

County Procedures

Written Facility Condition Description

Written description of the physical condition of the school targeted for closure or consolidation and the school or schools which the county designates to receive the students. This description shall include age, number of buildings, general condition, adequacy of structural, electrical, and mechanical systems to provide a safe and healthful environment.

Malden Elementary School is a one-story masonry and steel wall bearing facility constructed in 1953 with additions in 1961 and 1969. The building contains 21,909 square feet housing classrooms, instructional materials center, a multipurpose room, food service facilities, and undersized administrative/pupil services space. There is one portable classroom building in use on the site. The building is not sprinkled and is served by public water and sanitary systems. The building is considered to be in below average condition. There is no safe school entrance, overall sewage system is below average, canopies are needed over top of exterior entrances and ramps and the electrical system needs some repair on branch circuits.

The school is located on a 1.38 acre site fronting Salinas Drive. Bus loading uses city streets and this area is not separated from vehicular traffic. Adequate school parking is not provided and a separate parent pick-up area is not provided. The site supports limited paved and grass play areas across Salinas Drive and is fenced for safety. The neighborhood is residential

The proposed Eastern Kanawha County Elementary Center will be a PK-5 fully accessible, barrier free, single story facility on a 10.37 acre site in DuPont City. It is being planned for 2 studios with multiple breakout classrooms per grade level. Student support programs will be in place along with the appropriate support staff. The design will provide safe school measures campus wide. Separate parent pick-up areas and bus loading areas will be incorporated into the design. There will be adequate staff and parent/visitor parking.

The facility, in addition to regular and special needs classrooms, will house art space, instructional materials center, a multipurpose room, food service facilities, and administrative/pupil services space.

3.2.b. Facilities

County Procedures

Educational Programs and Related Student Services

Evaluation of the school targeted for closure or consolidation and the school or schools that the county designates to receive the students in regard to the school(s) adaptability to the present and proposed educational programs, and the provisions of related student services.

Policy 6200 guidelines were used in the planning and implementation of the closure of Mary Ingles Elementary School. The latest Comprehensive Educational Facilities Plan will be used in planning and developing of a proposed Eastern Kanawha County Elementary Center, the receiving school.

A proposed Eastern Kanawha County Elementary Center would have adequate space for special needs students. Space would be available for Pre-kindergarten classrooms, Kindergarten classrooms, Emotional Disturbance classroom, and Intellectual Disability classroom. Instruction will be designed to teach the West Virginia Content Standards and Objectives.

A proposed Eastern Kanawha County Elementary Center students, teachers, and staff will use technology on a daily basis. The school would serve as a Pre-k through 5th, with two teams per grade level. Student support programs would be in place along with the appropriate support staff. Wireless internet access is available throughout the school.

School Enrollments, Capacities, and Utilizations

<i>School</i>	<i>Enrollment</i>	<i>Building Capacity</i>	<i>Utilization %</i>
Malden Elementary School	171	316	54.1%
Proposed Eastern Kanawha County Elementary Center	598 (Estimated)	703	85.1%

Facilities Table 2

Utilization Calculation Sheet

The supporting School Building Authority of West Virginia's (SBA) Worksheet on Building Program Utilization.

See Appendix for this Documentation

3.2.b. Facilities

County Procedures

Required Services and Barrier-free Environments

Comparison of the school(s) targeted for closure or consolidation and the school(s) which the county has designated to receive the students in regard to providing the required services and barrier-free environments to students with disabilities.

Malden Elementary School does not have ADA accessible restrooms.

A proposed Eastern Kanawha County Elementary Center will be ADA accessible.

Grade Configurations and Educational Programs

Elaboration on the effect the proposed school closing or consolidation will have on the school system's future plans regarding grade configuration, educational programs, and facility requirements.

The closure of Malden Elementary School is congruent with Kanawha County Schools 2020-2030 CEFP Plan. The closure will allow for more efficient and increased dispersion of resources to areas of need. It will give the enrollment of Malden Elementary access to more appropriate and advantageous special education programs.

Construction Work Required for the Proposed Action

Elaboration on the planned facility additions, renovations, or replacements that are required by the county to accommodate the proposed closing and consolidation.

Additions, renovations, or replacements are not required or proposed to Malden Elementary for closure.

Construction of a proposed Eastern Kanawha County Elementary Center would be required to accommodate the Mary Ingles Elementary School enrollment.

The Future of Closed Facilities

Elaboration on the future use or disposal of facilities designated by the county for closure.

Malden Elementary School will be a permanent closure into a proposed Eastern Kanawha County Elementary Center. The Kanawha County Board of Education will retain Malden Elementary School for future development.

3.2.b. Facilities

County Procedures

School Building Authority of WV (SBA)

Identify if the proposed school closing or consolidation is contingent upon receiving funding from the SBA.

The closure of Malden Elementary School is contingent upon SBA funding. The current Malden Elementary school students will be absorbed into a proposed Eastern Kanawha County Elementary Center.

SBA Facility Condition Documentation

Attachment of the most recent SBA facility evaluation form for each school affected and an updated form if the most recent SBA facility evaluation form is five years old or older.

[See Appendix for this Documentation](#)

Supporting Photographs, Floorplans, and other Documentation

Provide facility floorplans, photos, and any supporting documentation. Examples of supporting documentation include reports from architects, engineers, Fire Marshall, and insurance companies.

[See Appendix for this Documentation](#)

3.2.c. Finance

County Procedures

Itemization of Anticipated Cost and Savings

Itemization of the anticipated cost or savings the county will experience in all areas as a result of the proposed school closure or consolidation. Such itemization shall be in the form of a table indicating the following:

Closing School(s) Annual Current Cost

The current annual cost at the school(s) to be closed for:

Malden Elementary School

Item	Amount
Utilities	\$89,432.77
Personnel	\$1,337,117.51
Maintenance	\$8,796.53
Transportation	\$59,060.98
Other	\$5,360.37
Total	\$1,499,768.16

Finance Table 1

Mary Ingles Elementary School

Item	Amount
Utilities	\$53,538.02
Personnel	\$1,105,774.88
Maintenance	\$6,130.94
Transportation	\$106,488.73
Other	\$5,022.65
Total	\$1,276,955.22

Finance Table 2

Belle Elementary School

Item	Amount
Utilities	\$60,210.50
Personnel	\$1,779,256.26
Maintenance	\$5,787.94
Transportation	\$57,271.25
Other	\$18,831.87
Total	\$1,921,357.82

Finance Table 3

Midland Trail Elementary School

Item	Amount
Utilities	\$66,583.61
Personnel	\$1,318,481.74
Maintenance	\$7,176.33
Transportation	\$99,329.83
Other	\$7,619.57
Total	\$1,499,191.08

Finance Table 4

3.2.c. Finance

County Procedures

Closing School(s) Annual Current Cost (If Applicable)

The current annual cost at the school(s) to be receiving for:

Malden, Mary Ingles, Belle, and Midland Trail Elementary School

Item	Amount
Utilities	\$269,764.90
Personnel	\$5,118,613.45
Maintenance	\$27,891.74
Transportation	\$322,150.79
Other	\$36,834.46
Total	\$6,197,272.28

Finance Table 5

Anticipated Annual Cost after Action

The anticipated annual cost at the school(s) to be receiving for:

Proposed Eastern Kanawha County Elementary Center

Item	Amount
Utilities	\$89,432.77
Personnel	\$3,912,806.89
Maintenance	\$2,789.17
Transportation	\$361,441.19
Other	\$20,359.63
Total	\$4,386,829.65

Finance Table 6

Net Cost or Savings

the net cost or savings of the school(s) to be closed and the school(s) designated by the county to be receiving students for:

Proposed Eastern Kanawha County Elementary Center and Malden Elementary School

Item	Amount
Utilities	\$180,332.13
Personnel	\$1,627,823.50
Maintenance	\$25,102.57
Transportation	(\$39,290.40)
Other	\$16,474.83
Total	\$1,810,442.63

Finance Table 7

3.2.c. Finance

County Procedures

Anticipated Construction Cost to Accommodate Action

Cost of any renovation or addition resulting from the proposed school closure or consolidation, including all proposed funding sources.

Malden Elementary School

No costs are anticipated for the closure of Malden Elementary.

Proposed Eastern Elementary School

An estimated 27 million dollar Eastern Kanawha County Elementary Center will be constructed.

County Expense Fund History

Five-year history of the county's unrestricted general current expense fund balance and that balance as a percentage of the county's approved levy estimate.

Year	Unrestricted General Current Expense Fund Balance	Approved Levy Estimate	Percentage of Approved Levy Estimate
2023	\$49,771,324.00	\$229,752,276.00	21.66%
2022	\$52,668,539.00	\$230,870,062.00	22.81%
2021	\$41,235,334.00	\$239,881,973.00	17.19%
2020	\$51,430,753.00	\$237,323,995.00	21.67%
2019	\$29,080,399.00	\$226,766,487.00	12.82%

Finance Table 8

3.2.d. Personnel

County Procedures

Analysis of Anticipated Personnel Changes

An analysis of the effect the proposed school closure or consolidation will have on professional and service personnel. The analysis shall include, at a minimum, the following data regarding the anticipated increases or decreases in employment as a result of this proposed closure or consolidation:

Malden Elementary School – Current School Personnel Data Chart				
Professional Personnel	Administration	Teachers	Counselor	Nurse
<i>number professional personnel currently employed at the affected school(s);</i>	1	15	1	1
Service Personnel	Cooks	Aides	Custodians	Secretary
<i>number service personnel currently employed at the affected school(s);</i>	2	4	2	1

Current Personnel

Mary Ingles Elementary School – Current School Personnel Data Chart				
Professional Personnel	Administration	Teachers	Counselor	Nurse
<i>number professional personnel currently employed at the affected school(s);</i>	1	11	1	1
Service Personnel	Cooks	Aides	Custodians	Secretary
<i>number service personnel currently employed at the affected school(s);</i>	2	5	2	1

Current Personnel

Belle Elementary School – Current School Personnel Data Chart				
Professional Personnel	Administration	Teachers	Counselor	Nurse
<i>number professional personnel currently employed at the affected school(s);</i>	1	19.5	1	1
Service Personnel	Cooks	Aides	Custodians	Secretary
<i>number service personnel currently employed at the affected school(s);</i>	3	8	2	1

Current Personnel

Midland Trail Elementary School – Current School Personnel Data Chart				
Professional Personnel	Administration	Teachers	Counselor	Nurse
<i>number professional personnel currently employed at the affected school(s);</i>	1	15	1	1
Service Personnel	Cooks	Aides	Custodians	Secretary
<i>number service personnel currently employed at the affected school(s);</i>	2	6	2	1

Current Personnel

3.2.d. Personnel

County Procedures

Current Affected Schools Total – Before Proposed Action				
Professional Personnel	Administration	Teachers	Counselor	Nurse
<i>number professional personnel currently employed at the affected school(s);</i>	4	60.5	4	4
Service Personnel	Cooks	Aides	Custodians	Secretary
<i>number service personnel currently employed at the affected school(s);</i>	9	23	8	4

Current Personnel

Proposed Eastern Kanawha Elementary Center Total – Anticipated After Proposed Action				
Professional Personnel	Administration	Teachers	Counselor	Nurse
<i>total number of professional personnel that are anticipated to be employed at the affected school(s) upon the completion of the closure or consolidation;</i>	2	42.5	1	1
Service Personnel	Cooks	Aides	Custodians	Secretary
<i>total number of service personnel that are anticipated to be employed at the affected school(s) upon the completion of the closure or consolidation;</i>	5	19	3	2

Anticipated Personnel

Malden Elementary, Mary Ingles Elementary, Belle Elementary, and Midland Trail Elementary Schools – Anticipated Net Change After Proposed Action				
Professional Personnel	Administration	Teachers	Counselor	Nurse
<i>the anticipated net change in professional personnel due to the proposed closure or consolidation</i>	-2	-18	-3	0
Service Personnel	Cooks	Aides	Custodians	Secretary
<i>the anticipated net change in service personnel due to the proposed closure or consolidation</i>	-4	-4	-5	-2

Anticipated Personnel

3.2.d. Personnel

County Procedures

Malden Elementary, Mary Ingles Elementary, Belle Elementary, and Midland Trail Elementary Schools – Attrition and Reduction in Force Summary				
Professional Personnel	Administration	Teachers	Counselor	Nurse
<i>decrease that will occur through attrition</i>	-	-	-	-
<i>decrease that will occur through reduction in force</i>	2	18	3	0
Service Personnel	Cooks	Aides	Custodians	Secretary
<i>decrease that will occur through attrition</i>	-	-	-	-
<i>decrease that will occur through reduction in force</i>	4	4	5	2

3.2.e. Transportation

County Procedures

Analysis of Anticipated Transportation Time Changes

Explain any negative variances of 126CSR172, Policy 6200, Handbook on Planning School Facilities (Policy 6200), section 202.02, and the effects the variances may have on transportation. Provide the following bus route data and travel times:

Current and Difference of Travel Times

List the current travel time by bus route for students in the communities of the schools planned for closure or consolidation and the estimated increase or decrease in travel time as a result of the closure; and

Malden Elementary School

Route	Community	Current Travel Time	Estimated Time after Closure or Consolidation	Net Increase or Decrease
241.008	Dry Branch	26 Minutes	30 Minutes	4 Minutes
241.104	Malden	26 Minutes	26 Minutes	0 Minutes
241.105	Campbells Creek	18 Minutes	24 Minutes	6 Minutes

Transportation Table 1

Mary Ingles Elementary School

Route	Community	Current Travel Time	Estimated Time after Closure or Consolidation	Net Increase or Decrease
243.001	Winifrede	15 Minutes	30 Minutes	15 Minutes
243.001	Pointlick Fork	15 Minutes	27 Minutes	13 Minutes
243.001	Big Bottom	10 Minutes	25 Minutes	15 Minutes

Transportation Table 2

Belle Elementary School

Route	Community	Current Travel Time	Estimated Time after Closure or Consolidation	Net Increase or Decrease
206.002	Rand	17 Minutes	10 Minutes	7 Minutes
206.003	Diamond	8 Minutes	15 Minutes	7 Minutes
206.009	Witcher Creek	13 Minutes	20 Minutes	7 Minutes

Transportation Table 3

3.2.e. Transportation

County Procedures

Midland Trail Elementary School

<i>Route</i>	<i>Community</i>	<i>Current Travel Time</i>	<i>Estimated Time after Closure or Consolidation</i>	<i>Net Increase or Decrease</i>
241.008	Cabin Creek	20 Minutes	29 Minutes	9 Minutes
241.104	Witcher Creek	13 Minutes	20 Minutes	7 Minutes

Transportation Table 4

Anticipated Routes and Waiver Requests

List all anticipated bus routes after the proposed closure or consolidation with the estimated total one-way travel time for each route. Clearly identify any bus routes that exceed the recommended travel times and any routes which will require a waiver of W. Va. 126CSR92, Policy 4336, West Virginia School Bus Transportation Regulations, Procedures, and Specifications for the Design and Equipment of School Buses.

Proposed Eastern Elementary School

<i>Route</i>	<i>Community</i>	<i>One-way Travel Time</i>	<i>Amount Exceeding Recommended Travel Times</i>	<i>Is a Waiver of W. Va. 126CSR92, Policy 4336 Required (Yes / no)</i>
243.001	Winifrede	30 Minutes	0 Minutes	No
243.001	Pointlick Fork	27 Minutes	0 Minutes	No
243.001	Big Bottom	25 Minutes	0 Minutes	No
206.002	Rand	10 Minutes	0 Minutes	No
206.003	Diamond	15 Minutes	0 Minutes	No
206.009	Witcher Creek	20 Minutes	0 Minutes	No
241.008	Dry Branch	30 Minutes	0 Minutes	No
241.104	Malden	26 Minutes	0 Minutes	No
241.105	Campbells Creek	24 Minutes	0 Minutes	No
241.008	Cabin Creek	29 Minutes	0 Minutes	No
241.104	Witcher Creek	20 Minutes	0 Minutes	No

Transportation Table 5

3.2.f. Educational Program

County Procedures

Analysis and Assurance of Consideration

Complete a projected educational program improvement analysis which includes a statement of assurance that the following have been considered:

Affected School Name(s)

[Malden Elementary School and a proposed Eastern Kanawha County Elementary Center](#)

In the preparation of the documents regarding the closure and/or consolidation of the above referenced school, the following codes and policies have been considered:

[Please check each item that was considered.](#)

- ☐ *W. Va. 126CSR16, Policy 2419, Regulations for the Education of Students with Exceptionalities,*
- ☐ *W. Va. 126CSR42, Policy 2510, Assuring the Quality of Education: Regulations for Education Programs,*
- ☐ *W. Va. 126CSR44 et al., Policy 2520, Content Standards and Objectives for West Virginia Schools,*
- ☐ *WVBE Policy 6200-Planning of School Facilities*
- ☐ *WVBE Policy 6204-School Closings or Consolidations*

Superintendent

Date:

3.2.g. Community

An impact statement regarding the effect the proposed school closure or consolidation will have on the affected communities and their students. Where schools and their respective communities are all defined by their own unique relationships, each proposed action will result in varying types and degrees of community impact. To better understand this diverse relational dynamic, the impact statement shall describe:

1. The known relationships that exist among the affected schools and their communities.

Identify School(s): Malden Elementary School

Malden Elementary School is located 2.8 miles, about a 8-minute drive by car, from the site of the proposed Eastern Kanawha County Elementary School. Students from Malden Elementary School attend Dupont Middle School for grades 6 through 8 and Riverside High School for grade levels 9 through 12.

Identify School(s): Eastern Kanawha County Elementary School

The site of the proposed Eastern Kanawha County Elementary School is located 2.8 miles, about an 8-minute drive by car, from Malden Elementary School. Students from the proposed Eastern Kanawha County Elementary School will attend Dupont Middle School for grades 6 through 8 and Riverside High School for grade levels 9 through 12.

2. How the existing known relationships could be impacted by the proposed action.

Identify School(s): Malden Elementary School

Belle Elementary School is located in the unincorporated town of Malden. The town and local community show an immense amount of support for Malden Elementary School and all of its offered programs. Some of the businesses in the town of Malden are Little General Store, Sam's Hotdog Stand, Fas Chek Grocery, Stevens & Grass Funeral Home, Rowe Law, and Malden Floral. The community of Malden frequently patronize many of the same businesses, shopping centers, churches, banks, and recreational facilities as the Dupont City community.

Identify School(s): Eastern Kanawha County Elementary School

The proposed Eastern Kanawha County Elementary School is located in the unincorporated town of Dupont City. Dupont City is located between the unincorporated town of Rand, and the incorporated town of Belle. The local community show an immense amount of support for Dupont Middle School and all of its offered programs. Some of the businesses in the community of Dupont City are Conway Freight, Petroleum Transport, Maxum Petroleum, Pitt Ohio Express, Pjax Trucking, Bellissimo Pizza, Right Aid Pharmacy, and One Stop. The community of Dupont City frequently patronize many of the same businesses, shopping centers, churches, banks, and recreational facilities as the Malden community.

3.2.g. Community

3. The potential for new relationships that could be developed under the proposed action.

Identify School(s): Malden Elementary School

Following the closure of Malden Elementary School, new relationships could be formed, through educational, athletic, and community programs. Students transitioning to a different school will benefit from existing programs, and afterschool opportunities. Malden Elementary School will be involved in the planning of merger events for the students and community, held throughout the upcoming school years before the proposed consolidation.

3.3. & 3.4. Public Notices and Hearings

County Procedures

Notice of Public Hearing(s)

The county must provide notice for the public hearing which shall be advertised through a Class III legal advertisement for three weeks prior to the date of the hearing in a newspaper in general circulation in the locality of any school to be closed or consolidated and in the locality of any school that has been designated by the county to receive students from the schools to be closed or consolidated. The notice also shall be posted in all schools as provided in section 3.3.5 at least 30 days prior to the date of hearing.

If the county will be applying for SBA funding, the procedures must be completed before the SBA will consider a project for funding, as further outlined in section 6. If the county will be utilizing local funding for a construction project related to the closure or consolidation, the procedures must be completed prior to the initiation of construction. For all other closures and consolidations, counties must complete the procedures on or before December 31st of the calendar year prior to the calendar year in which the closures or consolidations are to be effective.

NOTICE OF PUBLIC HEARING Kanawha County Schools W. Va. 18-5-13a W. Va. Board of Education Policy 6204

DATE and TIME: Monday, October 21, 2024, at 6:00 p.m.
Sign in between 5:00 and 5:55 p.m. to speak

ALTERNATIVE DATE and TIME: If, in the event of inclement weather or other factors beyond the control of the board, the hearing cannot take place at the date and time set forth above, the hearing will be held on Tuesday, November 12, 2024, at 6:00 p.m.

PLACE: Riverside High School Auditorium, 1 Warrior Way, Belle, WV 25015. The hearing location is subject to change if, at the time the meeting is called to order, it is determined that the meeting location is of insufficient size to accommodate those wishing to attend.

The hearing may not continue beyond 11:00 p.m. In the event the hearing is not concluded by 11:00 p.m., the hearing may recess, to continue on dates designated and announced by the board just prior to the hearing recess, to be continued day-to-day until concluded.

Proposed Action of the Board of Education of the County of Kanawha, West Virginia:

Malden Elementary School – Close and transfer of students to a proposed Eastern Kanawha County Elementary Center.

3.3. & 3.4. Public Notices and Hearings

County Procedures

Hearing Procedures: A representative of Kanawha County Schools will provide an oral summary of the reasons and supporting data in connection with the proposed action of the Board. For a period of fifty-five minutes prior to the commencement of the public hearing, persons may sign a register for the purpose of making statements, offering testimony, and questioning school officials. Persons wishing to speak about the effects of the proposed closure of Malden Elementary and consolidation into a proposed Eastern Kanawha County Elementary Center, as well as those who wish to speak as members of the general public, will be recognized in the order in which they have signed the register. Each person shall be limited to three/five minutes. Written statements may be submitted in lieu of oral statements or testimony and must be submitted prior to the conclusion of the hearing. Any written statement will be given full consideration before the board takes any final action.

Reasons and supporting data available for public inspection: Written reasons and supporting data in connection with the proposed action of the Board are available for public inspection beginning September 11, 2024, through October 21, 2024, between the hours of 7:30 a.m. and 4:00 p.m. in the Office of the Superintendent of Kanawha County Schools located in Room 222, 200 Elizabeth Street, Charleston, West Virginia. The reasons and the supporting data in connection with the proposed actions are also available for inspection at Malden Elementary School.

Identify School: Malden Elementary School

First Run: _____

Second Run: _____

Third Run: _____

Qualified Newspaper Name: Charleston Gazette Mail

Proof of Public Hearing(s) Notice

contain proof that the hearings were properly advertised with a class III legal advertisement.

Such proof can be satisfied with:

- *a notarized letter from the county's qualified newspaper(s) for legal notices, as defined by the West Virginia Secretary of State, that specifically states the three dates in which the newspaper ran the county's public hearing notification: or*
- *a scan or download for each of the 3 required legal advertisements from the county's qualified newspaper(s) for legal notices, as defined by the West Virginia Secretary of State, where the full legal notification and date of publication is provided and legible.*

See Appendix for this Documentation

3.3. & 3.4. Public Notices and Hearings

County Procedures

Public Hearing(s) Documentation

Provide documentation of all hearings, motions, written public comments, a synopsis or transcript of verbal public comments, and other actions concerning the proposed school closings and consolidations.

[See Appendix for this Documentation](#)

3.6. County Board Actions

County Procedures

County Board Vote(s)

After the vote and following compliance with sections 3.4 and 3.5, and prior to the implementation of any school closure or consolidation and following compliance with all statutory and regulatory provisions, the county must file a request for school closure and/or consolidation with the WVBE for approval.

Comprehensive Educational Facilities Plan (CEFP)

Identify if the proposed school closing or consolidation was included in the county's approved CEFP. If the county's approved CEFP did not contain the proposed closure or consolidation, the county must also submit a request to amend their CEFP. Such requests shall include all required CEFP amendment forms.

The closure of Malden Elementary School is congruent with Kanawha County Schools 2020-2030 CEFP Plan.

School Building Authority of WV

Identify if the proposed school closing or consolidation is contingent upon receiving funding from the SBA.

The closure of Malden Elementary School is not contingent upon SBA funding. The current Malden Elementary school students will be absorbed into a proposed Eastern Kanawha County Elementary Center.

3.6.a. Superintendent Verification of Board Actions

County Procedures

Malden Elementary School and Proposed Eastern Elementary Schools

Date of hearing: Monday, October 21, 2024, at 6:00 P.M.

Date of board approval: October 21, 2024, following hearing

Kanawha County requests the West Virginia Board of Education approve the following.

Closure and Consolidation of Malden Elementary School into a proposed Eastern Kanawha County Elementary Center.

- ☐ *The county assures that the applicable sections of the W. Va. Codes §18-5-13 and §18-5-13a, and WVBE Policies 6200 and 6204 have been addressed.*
- ☐ *This action is justified by the provided supplemental data and information pertinent to the following subjects: enrollment, facilities, finance, personnel, transportation, and educational programs.*
- ☐ *Documentation of all hearings, motions, written public comments, a synopsis or transcript of verbal comments, and other actions concerning the proposed school closings and consolidations were provided in this document.*
- ☐ *All hearings were properly advertised with a class III legal advertisement.*

Thomas E. Williams, Jr., Ed.D.

Signature of county superintendent attesting to the completion of all requirements as stated in W. Va. Codes §18-5-13 and §18-5-13a and WVBE Policies 6200 and 6204.

Superintendent

Date:

Appendix of Supporting Data

The list should include at a minimum the following data:

1. *SBA Worksheet on Building Program Utilization for all affected schools (Required)*
2. *Supporting Photographs, Floorplans, and other Documentation (As needed)*
3. *SBA Facility Condition Documentation for all affected schools (Required)*
4. *Proof of Public Hearing(s) Notice for all affected schools (Required)*
5. *Public Hearing(s) Documentation for all affected schools (Required)*
6. *Board minutes indicating the action of the board to approve the closure(s) (Required)*
7. *Cover letter addressed to the State Superintendent of Schools (Required)*
8. *Completed superintendent signature pages (Required)*
9. *Most current October 1st certified enrollment for county (Required)*

Table of Contents Entries

Table of Contents Sub Entries

Subtitles

County Narrative

Sub Notes

Directions

Policy Request

Appendix of Supporting Data

County Procedures

1. SBA Worksheets on Building Program Utilization

The supporting School Building Authority of West Virginia's (SBA) Worksheets on Building Program Utilization for:

Malden Elementary School Utilization Sheet

Proposed Eastern Kanawha County Elementary Center Utilization Sheet (Combined)

School Building Authority of West Virginia

BUILDING PROGRAM UTILIZATION WORKSHEETWorksheet #3
SBA FORM 301-C

NOTE: THIS FORM MAY BE SUBSTITUTED FOR A SIMILAR SBA-APPROVED DIGITAL INSTRUMENT

County: Kanawha County

School: Malden Elementary School

Current Enrollment: 171

<i>Classroom Types</i>	<i>Number Of Classroom Types</i>	<i>x</i>	<i>Maximum Pupils/ Class Capacity</i>	<i>=</i>	<i>Total Program Capacity</i>
Pre-K	1		20		20
Kindergarten	2		20		40
General Classrooms	10		25		250
Sp. Ed. Lvl. 1	1		6		6
TOTALS:	14				316

Program Utilization ($\frac{171}{\text{Current Enrollment}}$ divided by $\frac{316}{\text{Total Program Capacity}}$) times 100 = 54.1% Program Utilization

SCHOOLS PROGRAM UTILIZATION = 54.1%

Desirable Program Capacity = 85%

Instructions for Calculating Building Program Utilization

Elementary School – Calculate the number and type of classrooms using the maximum program capacity for each self-contained regular classroom. Assume for example – that all students are seated in a first period block without pullout programs. Do not include library/media, cafeteria, itinerant spaces, resource rooms, or optional academic classrooms such as art, music and computer labs that act as pullout programs to support the core curriculum.

Secondary School – Middle/Junior High School programs where various schedules exist, calculate the number and type of classrooms using the maximum program capacity for each regular or special classroom. Assume for example, that all students are seated in a first period block and exclude library/media, commons or any space that cannot be used for other course offerings in the daily capacity of each facility. The maximum capacity for instructional spaces for specialty classrooms is counted once. A specialty classroom may be available throughout the school day but due to its specialized design or equipment it is rendered impractical to use for other instructional purposes.

SBA 301-C

School Building Authority of West Virginia

Appendix of Supporting Data

County Procedures

2. Supporting Photographs, Floorplans, and other Documentation

Malden Elementary School





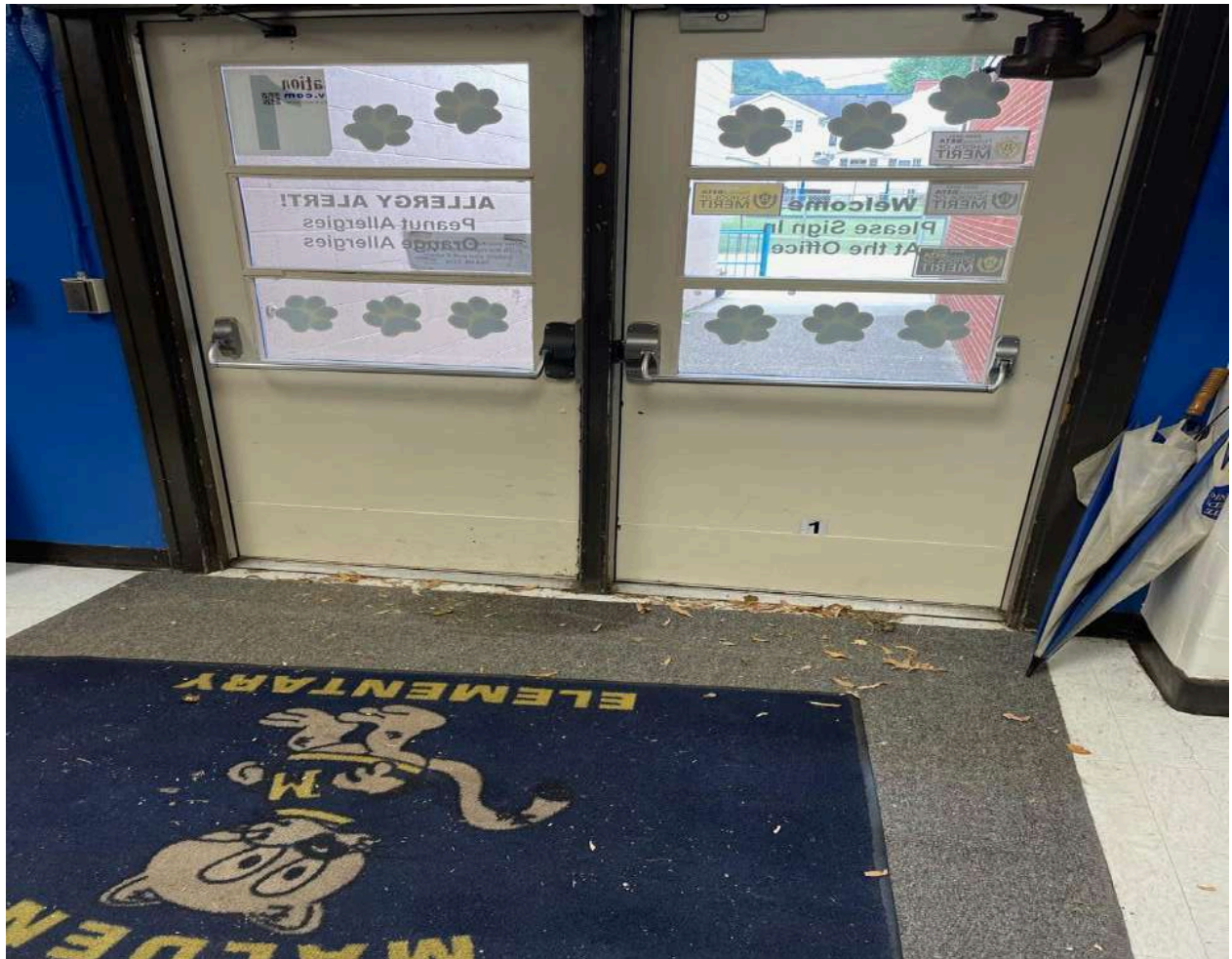






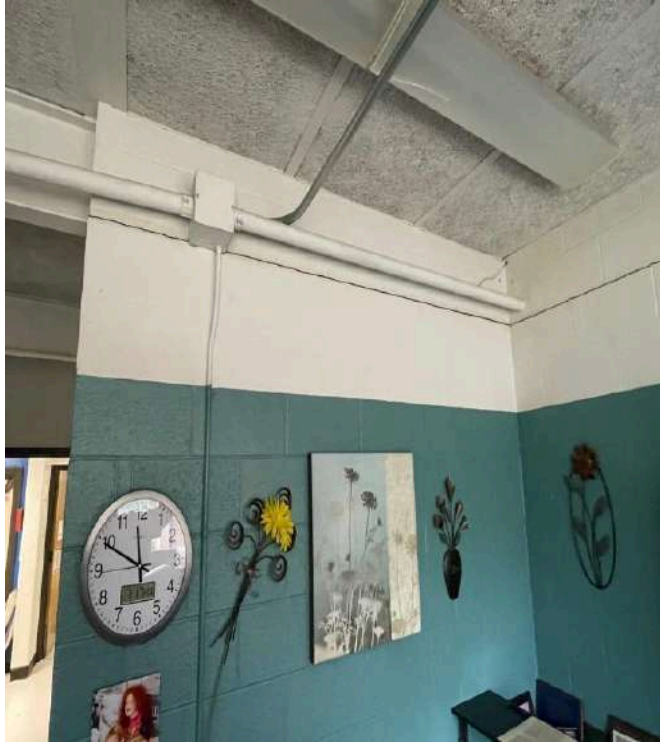








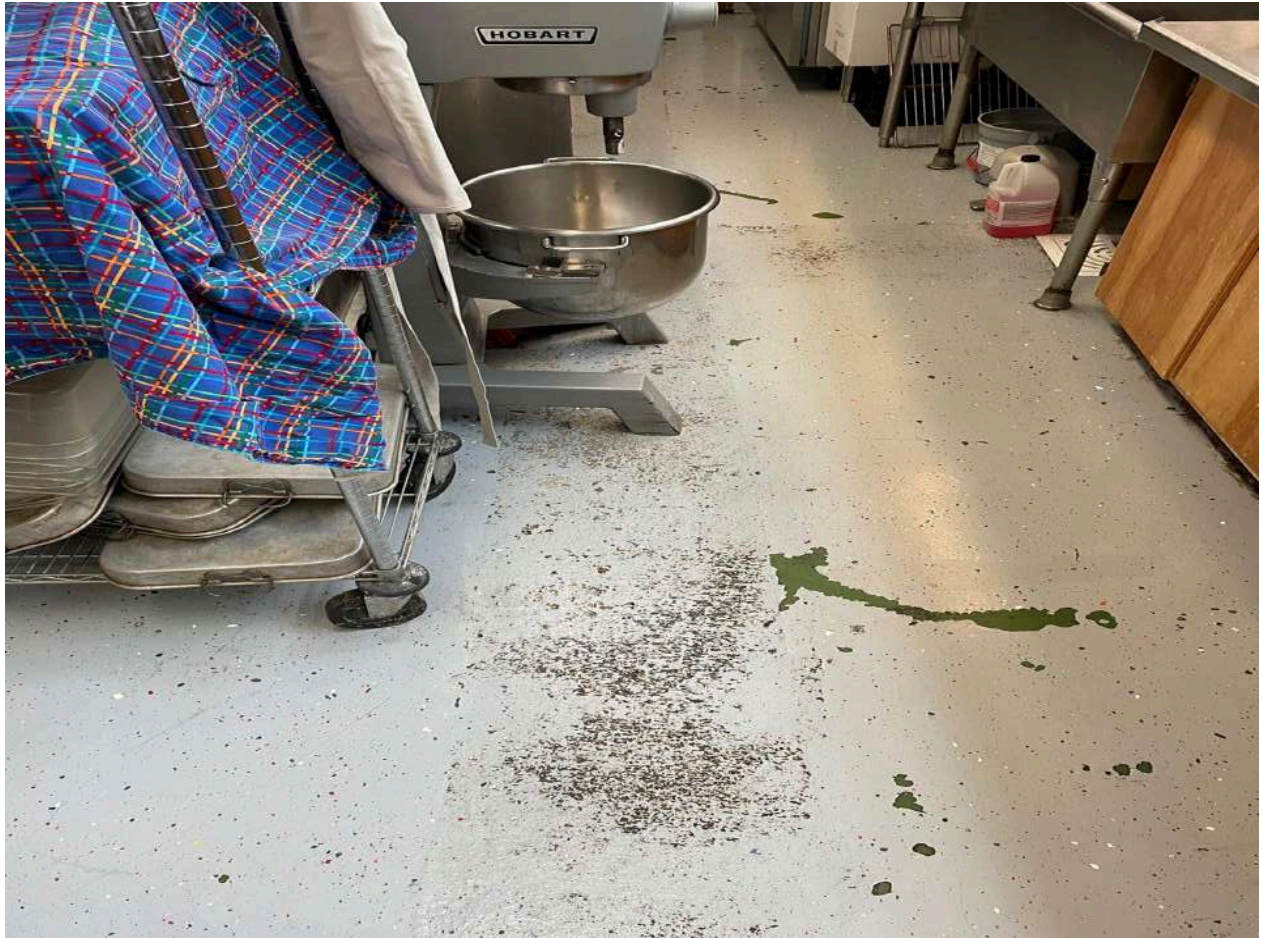


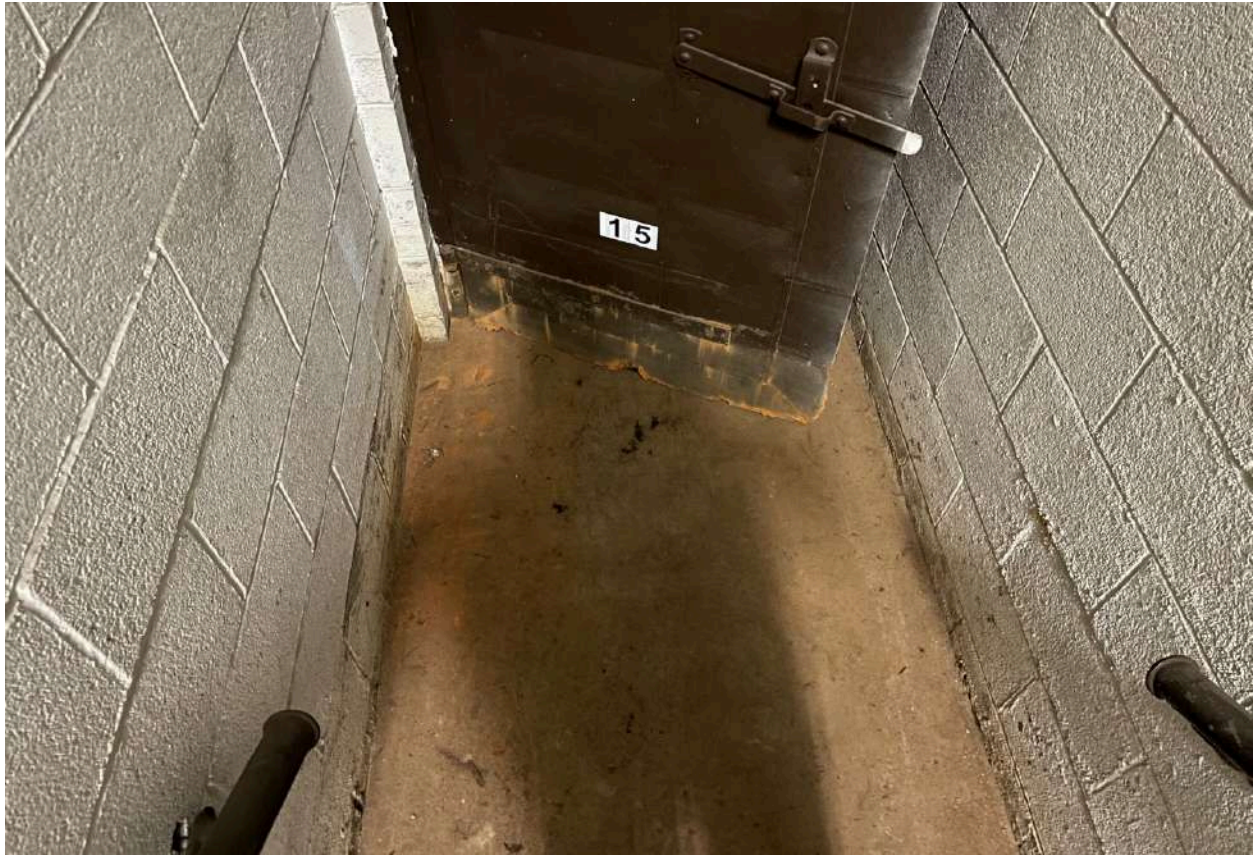


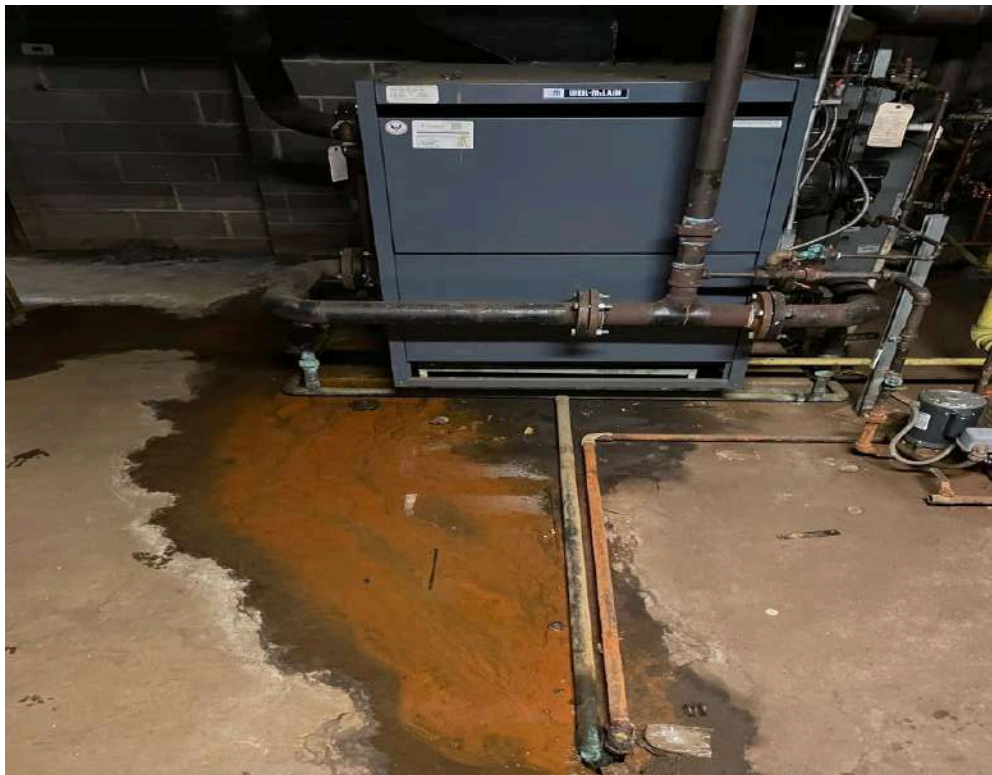








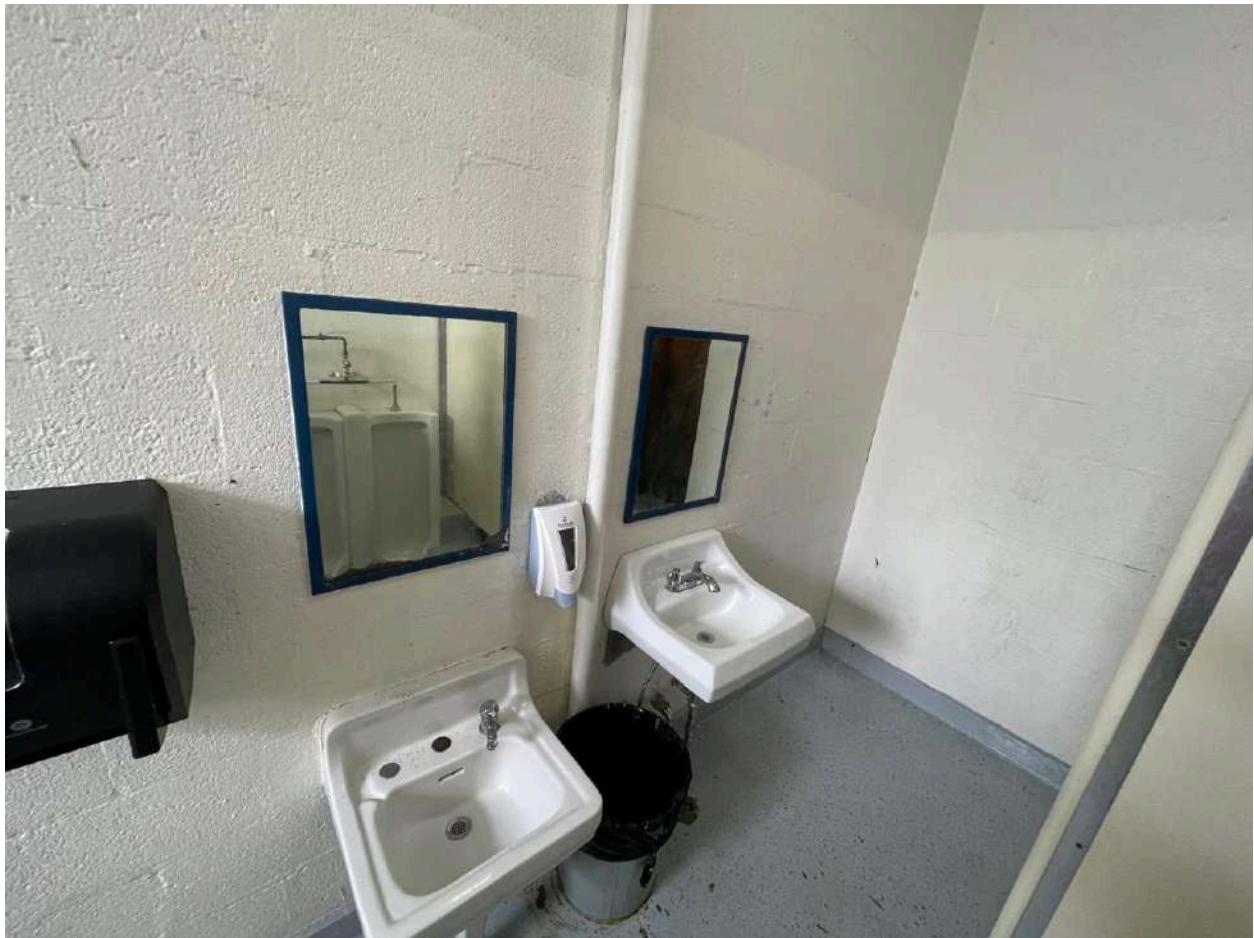
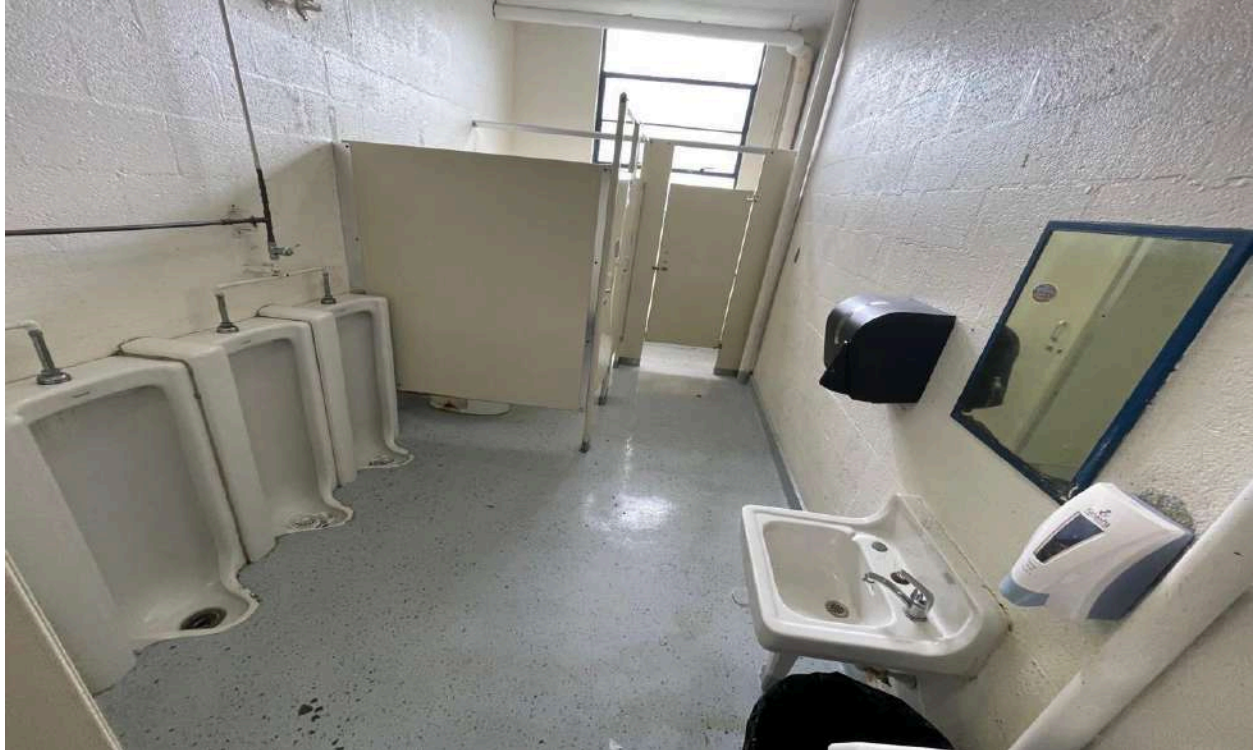


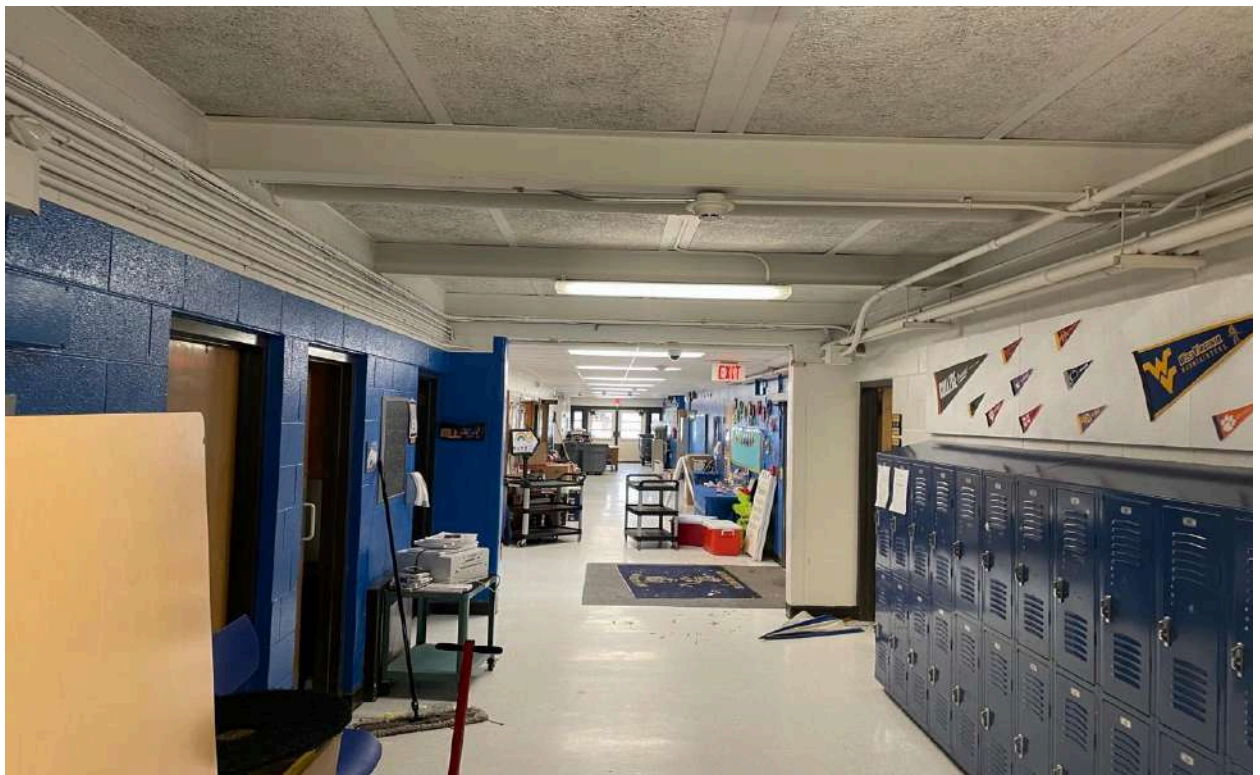


















Appendix of Supporting Data

County Procedures

3. SBA Facility Condition Documentation

The supporting School Building Authority of West Virginia's (SBA) Facility Evaluation Form for:

Malden Elementary School Facility Evaluation Form

Proposed Eastern Elementary School Facility Evaluation Form

[illegible]

School Building Authority of West Virginia
SBA Form 134 Data Collection Form
Building Information Sheet

Building Gross Square Feet	Main Building	Year Built Reconstruction 263,100 (FVA)	1958	4 Floors (incl. Basement)	3
			Y		

System	Material	Count	Year Installed if different from Building	Condition	Notes
Conveying Systems				Not Present	28 of 29 systems have been evaluated
Electrical - Branch Wiring				2 - Below Average	No electrical system though 2 stories
Electrical - Lighting	Fluorescent			3 - Average	
Electrical - Emergency Lighting and Exit Signs				2 - Below Average	The emergency lighting is not connected to the lighting serving the space
Electrical - Service and Distribution				2 - Below Average	600A 128/121 200 394
Equipment & Furnishings - Institutional Equipment	Includes Commercial			3 - Average	
Exterior Enclosure - Exterior Doors	Metal			3 - Average	French in half shape
Exterior Enclosure - Exterior Wall Finishes	Masonry			3 - Average	
Exterior Enclosure - Exterior Windows	Single Pane, Fixed, All Inland Types			2 - Below Average	Original building windows are in very bad shape
Fire Protection - Fire Alarm & Detection				3 - Average	EST
Fire Protection - Sprinklers and Standpipes				Not Present	
HVAC - Terminal & Package Units				Not Present	
HVAC - Distribution System				3 - Average	
HVAC - Heat Generating Systems				3 - Average	
HVAC - Cooling Generating Systems				2 - Below Average	PTAC window units cannot introduce outside air
HVAC - Controls and Instrumentation				2 - Below Average	
Interior Construction - Interior Doors	Set of Core Wood			3 - Average	
Interior Construction - Staircases and Casework				3 - Average	
Interior Finishes - Ceiling Finishes	Exposed			3 - Average	Unexposed original building is dropped ceiling
Interior Finishes - Floor Finishes	Resilient			3 - Average	Start is concrete of 2nd stories the original had wood laminate
Interior Finishes - Gymnasium Floor Finishes				3 - Average	Resilient
Interior Finishes - Wall Finishes	Painted CMU			3 - Average	Original building has plaster
Plumbing - Domestic Water Distribution				3 - Average	
Plumbing - Fixtures	Marble			2 - Below Average	
Plumbing - Rain Water Drainage				3 - Average	
Plumbing - Sanitary Sewer				3 - Average	
Roofing - Roof Coverings	Membrane			3 - Average	Roof has leaks at original building
Security System				3 - Average	The facility has a room to qualify a visitor prior to entry
Technology Infrastructure				3 - Average	

School Building Authority of West Virginia
SBA Form 134 Data Collection Form
Facility General Information Sheet

1 - Facility General Information Worksheet

LEA ID:	039242	Assessment Date:	09/24/19
County:	Kanawha	Total Gross Square Feet:	26,100
Facility Name:	Marmet Elementary School	Original Year of Construction:	1938

Energy Indexes

(List the total amount of each fuel source used for one year)

Source (Units)	Consumption per Year	Conversion (BTU/Unit)	Total BTU
Electric (Kilowatt-Hrs)	271,080	3,412	924,962,911
Natural Gas (MCF) --OR--	1,976	1,037,000	2,049,112,000
Natural Gas (Decotherms)		1,000,000	-
Coal (Tons)		24,000,000	-
#2 Fuel Oil (Gallons)		138,874	-
Propane (Pounds)		21,600	-
Used Oil (Gallons)		125,000	-
Wood Chips (Tons)		16,500,000	-
Other (specify)			-
Amount:			
Units:			

Worksheet Links:

Total BTU: 2,974,074,911
Energy Utilization Index (EUI): 113,949

School Building Authority of West Virginia
SBA Form 134 Data Collection Form
Site Evaluation Sheet

LEA ID:	039242	Assessment Date:	09/24/19
County:	Kanawha	Total Gross Square Feet:	26,100
Facility Name:	Marmet Elementary School	Original Year of Construction:	1938

2 - Site Evaluation Worksheet

Site

City or Rural:	Rural
Actual Acres:	2.33
Useable Acres:	2.33
Site adequate for expansion:	No
Are public parks/areas adjacent:	Yes
% site out of flood plain:	100%
% site in flood plain:	0%

Site Remarks:

Overall Site Condition:

3-Average

Drainage

Drainage Remarks:

Overall Drainage Condition:

3-Average

Parking

Parking Adequately Lit:

Adequacy of Parking:

Yes

3-Average

Parking Remarks:

Overall Parking Condition:

3-Average

Bus Loading

Bus Loading Adequate:

Bus Loading Remarks:

Overall Bus loading Condition:

Yes

3-Average

Access Roads

Adequacy of On-Site Access Roads:

Adequacy of Off-Site Access Roads:

3-Average

3-Average

Access Roads Remarks:

Overall Access Road Condition:

3-Average

Playfields/Playcourts

Adequacy of Playfields:

3-Average

Adequacy of Playcourts:

3-Average

Playfields/Playcourts Remarks:

Overall Playfield/Playcourts Condition:

3-Average

Site Utilities

Electrical Services:

Phase:

Three

Voltage:

208Y/120V

Amps:

600A

Electric Utility Company:

Appalachian Power

Main Service Feed into Building:

Overhead

Electrical Service Remarks:

Overall Electrical Service Condition:

2-Below Average

A new service was installed in the past and the existing service was fed from the new. The original equipment is antiquated.

Fuel Sources:

Natural Gas:

Yes

Coal:

Fuel Oils:

Propane:

Other (Specify):

Fuel Line Size (inches):

4"

Fuel Utility Company:

Mountaineer Gas

Fuel Sources Remarks:

Overall Fuel Sources Condition:

Water Sources:

Public:

Yes

Well:

Water Line Size (inches):

1

Water Utility Company:

West Virginia American Water

Water Sources Remarks:

Overall Water Sources Condition:

3-Average

The water piping enters the building at 1" and was increased to 2".

Sewage Systems:

Public:

Yes

Septic:

Other (Specify):

Public Service District (PSD):

Marmet PSD

Sewage System Remarks:

Overall Sewage System Condition:

3-Average

School Building Authority of West Virginia
SBA Form 134 Data Collection Form
Building Component Evaluation Sheet

LEA ID:	039242	Assessment Date:	09/24/19
County:	Kanawha	Total Gross Square Feet:	26,100
Facility Name:	Marmet Elementary School	Original Year of Construction:	1938

3 - Building Component Evaluation Worksheet

Building Structures:

Type:

Load Bearing Masonry

Building Structures Remarks:

Overall Building Structure Condition: 3-Average

Floor Structures:

Steel Joist/Concrete (floor area SF):

Wood Joists (floor area SF):

Slab on Grade (floor area SF):

Other (specify) / Floor area SF:

7,150

18,950

Floor Structure Remarks:

Overall Floor Structure Condition: 3-Average

Roof:

Roof Structure:

Steel Joists

Roof Structures Remarks:

Overall Roof Condition:

Except original building is wood roof structure

3-Average

Building Systems:

The systems below are addressed in the FCA data collection tool.

Roof Coverings

Wall Finishes

Ceiling Finishes

Floor Finishes

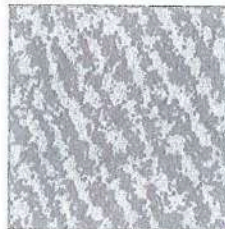
Doors

Windows

HVAC

Electrical

Fire Alarm



Technology Infrastructure:

Sufficient Electrical Capacity:

Power Receptacles Availability:

ID Network Type (if available):
Inventory Records Hardware
Other (specify):

Deficiencies:

Technology Remarks:

Overall Technology Infrastructure Condition:

Technology Assessment:

Teacher Training:
Software Use:
Purchasing Practices:
Network Administration:
Inventory Records
Other (specify):

4-Above Average	
4-Above Average	
4-Above Average	
4-Above Average	
4-Above Average	

Deficiencies:

Technology Remarks:

Overall Technology Condition:

4-Above Average

School Access Safety Audit:

Planning:
Deterrence:
Detection:
Delay:
Communication:
Evacuation:

Safety Remarks:

Overall Access Safety Condition:

School Building Authority of West Virginia
SBA Form 134 Data Collection Form
Facility Spaces Evaluation / Utilization Analysis Sheet

LEA ID:	039242	Assessment Date:	4/3/22
County:	Kanawha	Total Gross Square Feet:	26,100
Facility Name:	Malden Elementary School	Original Year of Construction:	1938

Classroom Type	Number of Class Types (ES)	Number of Class Types (MS)	Number of Class Types (HS)	X	Max Students Per Room	=	Total Program Capacity	Utilization Calculation
Pre-Kindergarten (Full Day)	1				20		20	Current Enrollment
Kindergarten (Full Day)	1				20		20	152
General Purpose Classroom	11				25		275	
Computer Lab	n/a				25		0	Total Program Capacity
Art Lab	n/a				25		0	321
Music Classroom	n/a				25		0	
Special Ed Pull-out	n/a				0		0	
Special Ed Level 1: (PK-5)	0		n/a		6		0	
Special Ed Level 1: (6-12)	n/a				12		0	
Special Ed Level 2: (PK-12)	0				12		0	
Special Ed Level 3: (PK-12)	0				8		0	
Special Education Classroom	1				6		6	Utilization Calculation
Technical Education/ Voc Ag	n/a				20		0	47%
Physical Education	n/a				50		0	
Science Classroom/Lab	n/a				25		0	Desirable Utilization
Business Education	n/a				25		0	85%
Family Liv/Cons Economics	n/a				25		0	
Totals	14	0	0				321	Difference
								-38%

School Building Authority of West Virginia
SBA Form 134 Data Collection Form
School Improvement Cost Summary Sheet

LEA ID:	039242	Assessment Date:	09/24/19
County:	Kanawha	Total Gross Square Feet:	26100
Facility Name:	Malden Elementary School	Original Year of Construction:	1938
Design Capacity Enrollment:	321		

Please note, the current-year costs shown below are intended to provide a Rough Order of Magnitude (ROM) estimate of costs. While they are appropriate for high-level capital forecasting, they should not be relied upon for determining specific project funding values. Actual project costs will likely deviate from the presented values due to a variety of factors including, but not limited to, hard and soft cost fluctuations and the actual date of construction for the intended project. Therefore, detailed cost estimates are recommended to validate funding requirements prior to obligating funds for facility replacement or renovation.

Improvement Item

1. Site Work

Unit	Quantity	Unit Cost	Item Cost	Remarks
Acres			\$ -	
Excavation/Grade			\$ -	
Drainage			\$ -	
Walks (6 ft wide)			\$ -	
Parking			\$ -	
Bus Loading			\$ -	
Roads			\$ -	
Playing Fields			\$ -	
Other (Describe in 'Remarks')			\$ -	
Other (Describe in 'Remarks')			\$ -	
Other (Describe in 'Remarks')			\$ -	

Sub-Total

\$ -

2. Renovations, Exterior

Unit	Quantity	Unit Cost	Item Cost	Remarks
Wall Structure			\$ -	
Floor Structure			\$ -	
Roof Structure			\$ -	
Wall Facing			\$ -	
Windows			\$ -	
Doors/Frames			\$ -	
Roofing			\$ -	
Coping/Parapet			\$ -	
Painting			\$ -	
Other (Describe in 'Remarks')			\$ -	
Other (Describe in 'Remarks')			\$ -	
Other (Describe in 'Remarks')			\$ -	
LUMP SUM	1	\$ 200,000.00	\$ 200,000.00	WINDOWS

Sub-Total

\$ 200,000.00

3. Renovations, Interior

Unit	Quantity	Unit Cost	Item Cost	Remarks
Floor Covering			\$ -	
Patch & Painting			\$ -	
Ceiling Finish			\$ -	
Plumbing			\$ -	
Heating/Ventilating	26,100	\$ 40.00	\$ 1,044,000.00	
Air Conditioning			\$ -	
Lighting	26,100	\$ 12.00	\$ 313,200.00	
Wiring			\$ -	
Fire Alarm			\$ -	
Communication System			\$ -	
Technology			\$ -	
Interior Doors			\$ -	
Other (Describe in 'Remarks')			\$ -	
Other (Describe in 'Remarks')			\$ -	
Other (Describe in 'Remarks')			\$ -	

Sub-Total

\$ 1,357,200.00

4. Building Additions Including Furniture, Furnishings & Equipment

Unit	Quantity	Unit Cost	Item Cost	Remarks
Administration (ES, MS, HS)			\$ -	
Student Services (ES, MS, HS)			\$ -	

Kindergarten (ES)	SQ FT			\$ -	
Primary (ES)	SQ FT			\$ -	
Media Center (ES)	SQ FT			\$ -	
Basic (MS, HS)	SQ FT			\$ -	
Reading (MS, HS)	SQ FT			\$ -	
Health Education (MS, HS)	SQ FT			\$ -	
Computer Lab (ES, MS, HS)	SQ FT			\$ -	
Inst. Mat. Center (MS, HS)	SQ FT			\$ -	
Home Economics (MS, HS)	SQ FT			\$ -	
Art (ES, MS, HS)	SQ FT			\$ -	
Ind. Technology (MS, HS)	SQ FT			\$ -	
Music (ES, MS, HS)	SQ FT			\$ -	
Physical Education (MS, HS)	SQ FT			\$ -	
Auditorium (MS, HS)	SQ FT			\$ -	
Special Education (ES, MS, HS)	SQ FT			\$ -	
Multi-Purpose (ES)	SQ FT			\$ -	
Kitchen (ES, MS, HS)	SQ FT			\$ -	
Dining (MS, HS)	SQ FT			\$ -	
Business Education (MS)	SQ FT			\$ -	
Co-Op Education (MS)	SQ FT			\$ -	
Drivers Education (MS)	SQ FT			\$ -	
Staff/Faculty (ES, MS, HS)	SQ FT			\$ -	
Toilets/Fixtures (ES, MS, HS)	SQ FT			\$ -	
Storage General (ES, MS, HS)	SQ FT			\$ -	
Storage Instructional (ES, MS, HS)	SQ FT			\$ -	
Custodial (ES, MS, HS)	SQ FT			\$ -	
Mechanical (MS, HS)	SQ FT			\$ -	
Other (Describe in 'Remarks')	SQ FT	750	\$ 307.00	\$ 230,250.00	SAFE SCHOOL ENTRANCE
Other (Describe in 'Remarks')				\$ -	
Other (Describe in 'Remarks')				\$ -	
Subtotal of Building Additions (SQ FT)		750		\$ -	
Circulation	30%	225	\$ 307.00	\$ 69,075.00	
Sub-Total				\$ 299,325.00	

5. Special Construction	Unit	Quantity	Unit Cost	Item Cost	Remarks
Elevator	EACH			\$ -	
Sprinkler Systems	SQ FT			\$ -	
Kitchen Equipment	ALL			\$ -	
Waste Treatment	EACH			\$ -	
Other (Describe in 'Remarks')				\$ -	
Other (Describe in 'Remarks')				\$ -	
Other (Describe in 'Remarks')				\$ -	
Sub-Total				\$ -	

6. Other Special Costs	Quantity	Unit Cost	Item Cost	Remarks
			\$ -	
			\$ -	
			\$ -	
Sub-Total			\$ -	
Sub-Total of Items 1 through 6			\$ 1,856,525.00	

7. Architectural/Engineering Fees	%	Quantity	Item Cost	Remarks
New Construction			\$ -	
Renovations	7.0%	\$1,856,525.00	\$ 129,956.75	
Sub-Total			\$ 129,956.75	

8. Miscellaneous	Unit	Quantity	Unit Cost	Item Cost	Remarks
Survey	EACH			\$ -	
Soil Inv.	EACH			\$ -	
Other (Describe in 'Remarks')				\$ -	
Other (Describe in 'Remarks')				\$ -	
Other (Describe in 'Remarks')				\$ -	
Sub-Total				\$ -	

9. Contingencies	%	Quantity	Item Cost	Remarks
New Construction			\$ -	



Renovations

6.0% \$1,856,525.00

\$ 111,391.50



Sub-Total

\$ 111,391.50

Grand Total Project Cost

\$ 2,097,873.25

Worksheet Links:

[Campus Information](#)

[Building 1](#)

[Building 2](#)

[Building 3](#)

[Building 4](#)

Reference Data from Prior Sheets (for WVDE Use Only):

Energy Utilization Index:	113,949
Current Enrollment:	152
Program Capacity:	321
Utilization Calculation:	47%
Building(s) in Floodplain/Floodway:	0



[illegible]

School Building Authority of West Virginia
SBA Form 334 Data Collection Form
Building Information Sheet

Building Gross Square Foot	Main Building	Year Built Sicement (Y/N)	1912	# Floors (incl. bas)	1
	33,700		N		

System	Material	Count	Year Installed if different from Building	Condition	Notes
Conveying Systems				Not Present	N/A
Electrical - Branch Wiring				3 - Average	
Electrical - Lighting	LED			3 - Average	
Electrical - Emergency Lighting and Exit Sign				2 - Below Average	
Electrical - Service and Distribution				3 - Average	1,600A - 240V 3PH
Equipment & Furnishings - Institutional Equipment	Includes Commercial			3 - Average	
Exterior Enclosure - Exterior Doors	Metal			2 - Below Average	Several need replaced
Exterior Enclosure - Exterior Wall Finishes	Marble			1 - Average	
Exterior Enclosure - Exterior Windows	Single Pane, Insul4 All frame types			3 - Average	
Fire Protection - Fire Alarm & Detection				3 - Average	
Fire Protection - Sprinklers and Standpipes				Not Present	
HVAC - Terminal & Package Units				3 - Average	The addition have Roof Top Units and the Original building has window units.
HVAC - Distribution System				2 - Below Average	
HVAC - Heat Generating Systems				Not Present	Present but not the primary system in building conditions.
HVAC - Cooling Generating Systems				Not Present	Present but not the primary system in building conditions.
HVAC - Controls and Instrumentation				3 - Average	
Interior Construction - Interior Doors	Solid Core Wood			3 - Average	
Interior Construction - Specialties and Casework				3 - Average	
Interior Finishes - Ceiling Finishes	Acoustical Tile			3 - Average	
Interior Finishes - Floor Finishes	Beilux			3 - Average	Majority of old building is subpar tile
Interior Finishes - Gymnasium Floor Finishes				3 - Average	Multi-purpose room and cafeteria
Interior Finishes - Wall Finishes	Painted CMU			3 - Average	
Plumbing - Domestic Water Distribution				2 - Below Average	The facility does not have a backflow preventer
Plumbing - Fixtures	Metal			3 - Average	
Plumbing - Rain Water Drainage				3 - Average	
Plumbing - Sanitary Sewer	Membrane, Direct			3 - Average	
Roofing - Roof Coverings	Shur			2 - Below Average	Several leaks
Security System				3 - Average	The facility has the ability to qualify within prior to entry.
Technology Infrastructure				3 - Average	

School Building Authority of West Virginia
SBA Form 134 Data Collection Form
Facility General Information Sheet

1 - Facility General Information Worksheet

LEA ID:	039218	Assessment Date:	09/23/19
County:	Kanawha	Total Gross Square Feet:	32,700
Facility Name:	Chesapeake Elementary School	Original Year of Construction:	1932

Energy Indexes

(List the total amount of each fuel source used for one year)

Source (Units)	Consumption per Year	Conversion (BTU/Unit)	Total BTU
Electric (Kilowatt-Hrs)	366,080	3,412	1,249,116,211
Natural Gas (MCF) --OR--	1,344	1,037,000	1,393,728,000
Natural Gas (Decotherms)		1,000,000	-
Coal (Tons)		24,000,000	-
#2 Fuel Oil (Gallons)		138,874	-
Propane (Pounds)		21,600	-
Used Oil (Gallons)		125,000	-
Wood Chips (Tons)		16,500,000	-
Other (specify)			-
Amount:			-
Units:			-

Worksheet Links:

Total BTU: 2,642,844,211
Energy Utilization Index (EUI): 80,821

School Building Authority of West Virginia
SBA Form 134 Data Collection Form
Site Evaluation Sheet

LEA ID:	039218	Assessment Date:	09/23/19
County:	Kanawha	Total Gross Square Feet:	32,700
Facility Name:	Chesapeake Elementary School	Original Year of Construction:	1932

2 - Site Evaluation Worksheet

Site

City or Rural:	City
Actual Acres:	3.11
Useable Acres:	3.11
Site adequate for expansion:	Yes
Are public parks/areas adjacent:	No
% site out of flood plain:	100%
% site in flood plain:	0%

Site Remarks:	
Overall Site Condition:	3-Average

Drainage

Drainage Remarks:	
Overall Drainage Condition:	3-Average

Parking

Parking Adequately Lit:	Yes
Adequacy of Parking:	3-Average

Parking Remarks:	
Overall Parking Condition:	3-Average

Bus Loading

Bus Loading Adequate:	Yes
-----------------------	-----

Bus Loading Remarks:	
Overall Bus loading Condition:	3-Average

Access Roads

Adequacy of On-Site Access Roads:	3-Average
Adequacy of Off-Site Access Roads:	3-Average

Access Roads Remarks:

Overall Access Road Condition:

3-Average

Playfields/Playcourts

Adequacy of Playfields:

3-Average

Adequacy of Playcourts:

3-Average

Playfields/Playcourts Remarks:

Overall Playfield/Playcourts Condition:

3-Average

Site Utilities

Electrical Services:

Phase:

Three

Voltage:

120/240V

Amps:

1600

Electric Utility Company:

Appalachian Electric Power

Main Service Feed into Building:

Underground

Electrical Service Remarks:

Overall Electrical Service Condition:

3-Average

Fuel Sources:

Natural Gas:

Yes

Coal:

Fuel Oils:

Propane:

Other (Specify):

Fuel Line Size (inches):

4

Fuel Utility Company:

Mountaineer Gas Company

Fuel Sources Remarks:

Overall Fuel Sources Condition:

Water Sources:

Public:

Yes

Well:

Water Line Size (inches):

Not Observable

Water Utility Company:

West Virginia American Water

Water Sources Remarks:

Overall Water Sources Condition:

The facility does not have a backflow preventer

2-Below Average

Sewage Systems:

Public:

Yes

Septic:

Other (Specify):

Public Service District (PSD):

Chesapeake PSD

Sewage System Remarks:

Overall Sewage System Condition:

3-Average

School Building Authority of West Virginia
SBA Form 134 Data Collection Form
Building Component Evaluation Sheet

LEA ID:	039218	Assessment Date:	09/23/19
County:	Kanawha	Total Gross Square Feet:	32,700
Facility Name:	Chesapeake Elementary School	Original Year of Construction:	1932

3 - Building Component Evaluation Worksheet

Building Structures:

Type:

Load Bearing Masonry

Building Structures Remarks:

Overall Building Structure Condition: 3-Average

Floor Structures:

Steel Joist/Concrete (floor area SF):

Wood Joists (floor area SF):

Slab on Grade (floor area SF):

Other (specify) / Floor area SF:

32,700

Floor Structure Remarks:

Overall Floor Structure Condition: 3-Average

Roof:

Roof Structure:

Steel Joists

Roof Structures Remarks:

Original building is wood structure

Overall Roof Condition: 3-Average

Building Systems:

The systems below are addressed in the FCA data collection tool.

Roof Coverings

Wall Finishes

Ceiling Finishes

Floor Finishes

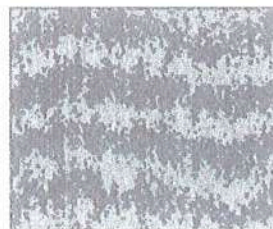
Doors

Windows

HVAC

Electrical

Fire Alarm



Technology Infrastructure:

Sufficient Electrical Capacity:

Power Receptacles Availability:



ID Network Type (if available):
Inventory Records Hardware
Other (specify):

Deficiencies:

Technology Remarks:

Overall Technology Infrastructure Condition:

Technology Assessment:

Teacher Training:
Software Use:
Purchasing Practices:
Network Administration:
Inventory Records
Other (specify):

4-Above Average	
4-Above Average	
4-Above Average	
4-Above Average	
4-Above Average	

Deficiencies:

Technology Remarks:

Overall Technology Condition:

4-Above Average



School Access Safety Audit:

Planning:
Deterrence:
Detection:
Delay:
Communication:
Evacuation:

Safety Remarks:

Overall Access Safety Condition:

--



School Building Authority of West Virginia
SBA Form 134 Data Collection Form
Facility Spaces Evaluation / Utilization Analysis Sheet

LEA ID:	039218	Assessment Date:	4/3/21
County:	Kanawha	Total Gross Square Feet:	32700
Facility Name:	Chesapeake Elementary School	Original Year of Construction:	1932

Lowest Grade Level:	PK	Grade Config	PK - 5	Age of Facility	88	No. of Renovations		Square Ft	32,700	Portables	0	Location (City, St)	Chesapeake, WV
Highest Grade Level:	5												

Complete ONLY the column below associated with the highest grade level for this school.

Classroom Type	Number of Class Types (ES)	Number of Class Types (MS)	Number of Class Types (HS)	Max Students Per Room	Total Program Capacity	Utilization Calculation
Pre-Kindergarten (Full Day)	1			20	20	Current Enrollment 151
Kindergarten (Full Day)	1			20	20	
General Purpose Classroom	12			25	300	Total Program Capacity 370
Computer Lab	n/a			25	0	
Art Lab	n/a			25	0	
Music Classroom	n/a			25	0	
Special Ed Pull-out	n/a			0	0	
Special Ed Level 1: (PK-5)	1	n/a	n/a	6	6	
Special Ed Level 1: (6-12)	n/a			12	0	
Special Ed Level 2: (PK-12)	2			12	24	
Special Ed Level 3: (PK-12)	0			8	0	
Special Education Classroom	0			6	0	
Technical Education/ Voc Ag	n/a			20	0	Utilization Calculation 41%
Physical Education	n/a			50	0	
Science Classroom/Lab	n/a			25	0	Desirable Utilization 85%
Business Education	n/a			25	0	
Family Liv/Cons Economics	n/a			25	0	
Totals	17	0	0		370	Difference -44%

School Building Authority of West Virginia
SBA Form 134 Data Collection Form
School Improvement Cost Summary Sheet

LEA ID:	039218	Assessment Date:	09/23/19
County:	Kanawha	Total Gross Square Feet:	32700
Facility Name:	Chesapeake Elementary School	Original Year of Construction:	1932
Design Capacity Enrollment:	370		

Please note, the current-year costs shown below are intended to provide a Rough Order of Magnitude (ROM) estimate of costs. While they are appropriate for high-level capital forecasting, they should not be relied upon for determining specific project funding values. Actual project costs will likely deviate from the presented values due to a variety of factors including, but not limited to, hard and soft cost fluctuations and the actual date of construction for the intended project. Therefore, detailed cost estimates are recommended to validate funding requirements prior to obligating funds for facility replacement or renovation.

Improvement Item

1. Site Work

Improvement Item	Unit	Quantity	Unit Cost	Item Cost	Remarks
Land Acquisition	Acres			\$ -	
Excavation/Grade	CUB FT			\$ -	
Drainage	LIN FT			\$ -	
Walks (6 ft wide)	SQ FT			\$ -	
Parking	SQ FT			\$ -	
Bus Loading	SQ FT			\$ -	
Roads	SQ FT			\$ -	
Playing Fields	SQ FT			\$ -	
Other (Describe in 'Remarks')				\$ -	
Other (Describe in 'Remarks')				\$ -	
Other (Describe in 'Remarks')				\$ -	
Sub-Total				\$ -	

2. Renovations, Exterior

Improvement Item	Unit	Quantity	Unit Cost	Item Cost	Remarks
Wall Structure	SQ FT			\$ -	
Floor Structure	SQ FT			\$ -	
Roof Structure	SQ FT			\$ -	
Wall Facing	SQ FT			\$ -	
Windows	EACH			\$ -	
Doors/Frames	EACH			\$ -	
Roofing	SQ FT	32,700	\$ 40.00	\$ 1,308,000.00	
Coping/Parapet	LIN FT			\$ -	
Painting	SQ FT			\$ -	
Other (Describe in 'Remarks')	LUMP SUM	1	\$ 100,000.00	\$ 100,000.00	EXTERIOR DOORS
Other (Describe in 'Remarks')				\$ -	
Other (Describe in 'Remarks')				\$ -	
Sub-Total				\$ 1,408,000.00	

3. Renovations, Interior

Improvement Item	Unit	Quantity	Unit Cost	Item Cost	Remarks
Floor Covering	SQ FT			\$ -	
Patch & Painting	SQ FT			\$ -	
Ceiling Finish	SQ FT			\$ -	
Plumbing	SQ FT			\$ -	
Heating/Ventilating	SQ FT	32,700	\$ 40.00	\$ 1,308,000.00	
Air Conditioning	SQ FT			\$ -	
Lighting	SQ FT			\$ -	
Wiring	SQ FT			\$ -	
Fire Alarm	SQ FT			\$ -	
Communication System	SQ FT			\$ -	
Technology				\$ -	
Interior Doors	EACH			\$ -	
Other (Describe in 'Remarks')				\$ -	
Other (Describe in 'Remarks')				\$ -	
Other (Describe in 'Remarks')				\$ -	
Sub-Total				\$ 1,308,000.00	

4. Building Additions Including Furniture, Furnishings & Equipment

Improvement Item	Unit	Quantity	Unit Cost	Item Cost	Remarks
Administration (ES, MS, HS)	SQ FT			\$ -	
Student Services (ES, MS, HS)	SQ FT			\$ -	

Kindergarten (ES)	SQ FT			\$ -	
Primary (ES)	SQ FT			\$ -	
Media Center (ES)	SQ FT			\$ -	
Basic (MS, HS)	SQ FT			\$ -	
Reading (MS, HS)	SQ FT			\$ -	
Health Education (MS, HS)	SQ FT			\$ -	
Computer Lab (ES, MS, HS)	SQ FT			\$ -	
Inst. Mat. Center (MS, HS)	SQ FT			\$ -	
Home Economics (MS, HS)	SQ FT			\$ -	
Art (ES, MS, HS)	SQ FT			\$ -	
Ind. Technology (MS, HS)	SQ FT			\$ -	
Music (ES, MS, HS)	SQ FT			\$ -	
Physical Education (MS, HS)	SQ FT			\$ -	
Auditorium (MS, HS)	SQ FT			\$ -	
Special Education (ES, MS, HS)	SQ FT			\$ -	
Multi-Purpose (ES)	SQ FT			\$ -	
Kitchen (ES, MS, HS)	SQ FT			\$ -	
Dining (MS, HS)	SQ FT			\$ -	
Business Education (MS)	SQ FT			\$ -	
Co-Op Education (MS)	SQ FT			\$ -	
Drivers Education (MS)	SQ FT			\$ -	
Staff/Faculty (ES, MS, HS)	SQ FT			\$ -	
Toilets/Fixtures (ES, MS, HS)	SQ FT			\$ -	
Storage General (ES, MS, HS)	SQ FT			\$ -	
Storage Instructional (ES, MS, HS)	SQ FT			\$ -	
Custodial (ES, MS, HS)	SQ FT			\$ -	
Mechanical (MS, HS)	SQ FT			\$ -	
Other (Describe in 'Remarks')	SQ FT	750	\$ 307.00	\$ 230,250.00	SAFE SCHOOL ENTRANCE
Other (Describe in 'Remarks')				\$ -	
Other (Describe in 'Remarks')				\$ -	
Subtotal of Building Additions (SQ FT)		750			
Circulation	30%	225	\$ 307.00	\$ 69,075.00	
Sub-Total				\$ 299,325.00	

5. Special Construction	Unit	Quantity	Unit Cost	Item Cost	Remarks
Elevator	EACH			\$ -	
Sprinkler Systems	SQ FT			\$ -	
Kitchen Equipment	ALL			\$ -	
Waste Treatment	EACH			\$ -	
Other (Describe in 'Remarks')				\$ -	
Other (Describe in 'Remarks')				\$ -	
Other (Describe in 'Remarks')				\$ -	
Sub-Total				\$ -	

6. Other Special Costs	Quantity	Unit Cost	Item Cost	Remarks
			\$ -	
			\$ -	
			\$ -	
Sub-Total			\$ -	
Sub-Total of Items 1 through 6			\$ 3,015,325.00	

7. Architectural/Engineering Fees	%	Quantity	Item Cost	Remarks
New Construction			\$ -	
Renovations	7.0%	\$3,015,325.00	\$ 211,072.75	
Sub-Total			\$ 211,072.75	

8. Miscellaneous	Unit	Quantity	Unit Cost	Item Cost	Remarks
Survey	EACH			\$ -	
Soil Inv.	EACH			\$ -	
Other (Describe in 'Remarks')				\$ -	
Other (Describe in 'Remarks')				\$ -	
Other (Describe in 'Remarks')				\$ -	
Sub-Total				\$ -	

9. Contingencies	%	Quantity	Item Cost	Remarks
New Construction			\$ -	

Renovations	6.0%	\$3,015,325.00	\$ 180,919.50	
Sub-Total			\$ 180,919.50	
Grand Total Project Cost			\$ 3,407,317.25	

Worksheet Links:

[Campus Information](#)
[Building 1](#)
[Building 2](#)
[Building 3](#)
[Building 4](#)

Reference Data from Prior Sheets (for WVDE Use Only):	
Energy Utilization Index:	80,821
Current Enrollment:	151
Program Capacity:	370
Utilization Calculation:	41%
Building(s) in Floodplain/Floodway:	

Appendix of Supporting Data

County Procedures

4. Proof of Public Hearings

Notice For :

Malden Elementary School

Proposed Eastern Elementary School

Appendix of Supporting Data

County Procedures

5. Public Hearing Documentation

Documentation for :

Malden Elementary School

Proposed Eastern Elementary School

Appendix of Supporting Data

County Procedures

6. Board Minutes

Board minutes indicating the action of the board to approve the closure:

Appendix of Supporting Data

County Procedures

7. Cover Letter

Cover letter addressed to the State Superintendent of Schools:

Appendix of Supporting Data

County Procedures

8. Superintendent Signature Pages

[Completed Superintendent Signature Pages:](#)

3.0. County Procedures

WVDE Application for school closure and/or consolidation

Kanawha County

Closure of Malden Elementary School into a proposed Eastern Kanawha County Elementary Center

Scheduled Date of Hearing: Monday, October 21, 2024 at 6:00 P.M.

Scheduled Date of County Board Vote: Monday, October 21, 2024 following the Hearing.

County Procedures

This template shall be used to accumulate and present the data that is requested in Policy 6204 and W.Va. Code 18-5-13a to support the closure or consolidation of a WV public school.

The county shall prepare written reasons and supporting data concerning proposed school closings or consolidations to be submitted to the WVBE for approval in accordance with this policy and W. Va. Code §18-5-13a. The written materials shall:

- ☐ *be available for public inspection in the office of the county superintendent during the 30 days preceding the date of the public hearing; and*

Be delivered in duplicate to the:

- ☐ *principal of a school that is proposed to be closed or consolidated, and of any school which the county designates to receive the students who are relocated as a result of the closure or consolidation; and*
- ☐ *chair of the local school improvement council (LSIC) representing a school that is proposed to be closed or consolidated, and any school that the county designates to receive the students who are relocated as a result of the closure or consolidation.*
- ☐ *A copy of the notice shall be posted at all schools, bus garages, and maintenance areas in the county in conspicuous working areas, for all professional and service personnel to observe.*

Thomas E. Williams, Jr., Ed.D.

Superintendent

Date:

3.2.f. Educational Program

County Procedures

Analysis and Assurance of Consideration

Complete a projected educational program improvement analysis which includes a statement of assurance that the following have been considered:

Affected School Name(s)

[Malden Elementary School and Proposed Eastern Elementary Schools](#)

In the preparation of the documents regarding the closure and/or consolidation of the above referenced school, the following codes and policies have been considered:

[Please check each item that was considered.](#)

- ☐ *W. Va. 126CSR16, Policy 2419, Regulations for the Education of Students with Exceptionalities,*
- ☐ *W. Va. 126CSR42, Policy 2510, Assuring the Quality of Education: Regulations for Education Programs,*
- ☐ *W. Va. 126CSR44 et al., Policy 2520, Content Standards and Objectives for West Virginia Schools,*
- ☐ *WVBE Policy 6200-Planning of School Facilities*
- ☐ *WVBE Policy 6204-School Closings or Consolidations*

Superintendent

Date:

3.6.a. Superintendent Verification of Board Actions

County Procedures

Malden Elementary School and Proposed Eastern Elementary Schools

Date of hearing: Monday, October 21, 2024 at 6:00 P.M.

Date of board approval: Monday, October 21, 2024 following hearing

Kanawha County requests the West Virginia Board of Education approve the following.

Closure and Consolidation of Malden Elementary School into Proposed Eastern Elementary School.

- ☐ *The county assures that the applicable sections of the W. Va. Codes §18-5-13 and §18-5-13a, and WVBE Policies 6200 and 6204 have been addressed.*
- ☐ *This action is justified by the provided supplemental data and information pertinent to the following subjects: enrollment, facilities, finance, personnel, transportation, and educational programs.*
- ☐ *Documentation of all hearings, motions, written public comments, a synopsis or transcript of verbal comments, and other actions concerning the proposed school closings and consolidations were provided in this document.*
- ☐ *All hearings were properly advertised with a class III legal advertisement.*

Thomas E. Williams, Jr., Ed.D.

Signature of county superintendent attesting to the completion of all requirements as stated in W. Va. Codes §18-5-13 and §18-5-13a and WVBE Policies 6200 and 6204.

Superintendent

Date:

Appendix of Supporting Data

County Procedures

9. Certified Enrollment for Kanawha County Board of Education

Most current October 1st certified enrollment:

**KANAWHA COUNTY SCHOOLS 2022 ENROLLMENT PROJECTIONS
BASED UPON SECOND MONTH ENROLLMENT DATA
GRADES K-12, SPECIAL ED INCLUDED**

SCHOOL NAME	GRADE GROUP	2022-23 ACTUAL	2023-24 PROJ.	2024-25 PROJ.	2025-26 PROJ.	2026-27 PROJ.	2027-28 PROJ.	2028-29 PROJ.	2029-30 PROJ.	2030-31 PROJ.	2031-32 PROJ.	2032-33 PROJ.
ELEMENTARY SCHOOLS												
ALBAN	(P-5)	255	225	206	208	200	196	202	203	207	212	217
ALUM CREEK	(P-5)	159	151	137	131	129	130	131	132	134	136	138
ANDREW'S HEIGHTS	(P-5)	263	246	224	219	219	215	225	227	230	234	237
ANNE BAILEY	(P-5)	217	225	229	232	224	226	232	233	236	239	242
BELLE	(P-5)	291	280	274	271	260	250	255	256	259	263	267
BRIDGEVIEW	(P-5)	422	395	375	356	349	347	359	362	368	376	382
CEDAR GROVE	(P-5)	168	143	121	115	110	110	112	113	115	117	119
CENTRAL	(P-5)	333	353	362	353	348	346	353	353	357	362	366
CHAMBERLAIN	(P-5)	213	218	218	204	200	199	200	199	201	203	205
CHESAPEAKE	(P-5)	115	114	112	115	117	107	106	106	107	108	109
CLENDENIN	(P-5)	300	293	269	257	248	236	243	243	245	249	251
CROSS LANES	(P-5)	310	299	290	283	276	282	294	298	304	310	315
DUNBAR PRIMARY	(P-5)	535	539	539	522	504	492	502	504	511	521	528
EDGEWOOD	(P-5)	378	381	382	372	373	367	378	379	384	391	396
ELK CENTER	(P-5)	491	441	422	408	401	394	409	411	417	424	430
FLINN	(P-4)	439	375	369	356	333	328	338	346	355	363	363
GRANDVIEW	(P-5)	174	165	162	154	150	147	151	152	154	157	159
HOLZ	(P-5)	279	263	257	262	244	241	243	242	245	250	253
KANAWHA CITY	(P-5)	245	232	227	212	211	203	211	212	215	219	222
KENNA	(P-5)	166	158	159	156	153	153	156	156	157	159	160
LAKEWOOD	(P-5)	288	289	284	279	275	273	282	284	288	293	297
MALDEN	(P-5)	152	114	106	102	99	96	103	104	107	110	113
MARMET	(P-5)	112	104	99	95	94	91	94	94	95	97	99

Tuesday, November 22, 2022

Page 1 of 4

**KANAWHA COUNTY SCHOOLS 2022 ENROLLMENT PROJECTIONS
BASED UPON SECOND MONTH ENROLLMENT DATA
GRADES K-12, SPECIAL ED INCLUDED**

SCHOOL NAME	GRADE GROUP	2022-23 ACTUAL	2023-24 PROJ.	2024-25 PROJ.	2025-26 PROJ.	2026-27 PROJ.	2027-28 PROJ.	2028-29 PROJ.	2029-30 PROJ.	2030-31 PROJ.	2031-32 PROJ.	2032-33 PROJ.
MARY INGLES	(P-5)	135	141	138	132	127	130	136	136	138	140	142
MIDLAND TRAIL	(P-5)	155	144	133	123	119	120	121	122	123	126	127
MONTROSE	(P-5)	236	213	199	193	182	181	185	186	188	191	193
NITRO ELEM.	(P-5)	367	333	326	317	306	298	304	304	306	310	313
OVERBROOK	(P-5)	349	382	376	374	348	348	347	345	346	348	349
PIEDMONT	(P-5)	259	301	308	298	288	292	299	299	301	305	308
PINCH	(P-5)	321	340	337	329	326	313	320	322	326	333	338
PRATT	(P-5)	161	137	134	128	121	119	122	123	125	128	129
PT. HARMONY	(P-5)	487	452	431	406	392	389	399	402	408	417	424
RICHMOND	(P-5)	223	236	237	225	229	227	236	239	243	248	252
RUFFNER	(P-5)	290	263	254	246	237	234	239	240	243	247	250
RUTHLAWN	(P-5)	226	246	237	240	236	229	234	234	237	241	244
SHARON DAWES	(P-5)	144	143	149	147	143	141	139	138	138	139	139
SHOALS	(P-5)	210	192	172	168	163	160	166	167	170	174	177
SISSONVILLE ELEM.	(P-4)	243	277	266	256	243	245	253	255	258	260	260
WEBERWOOD	(P-5)	261	245	247	239	231	235	241	243	248	254	259
WEIMER	(P-5)	138	133	126	121	117	118	121	122	124	127	129
WEST SIDE	(P-5)	353	314	298	292	283	279	288	291	296	301	306
ELEMENTARY SCHOOLS		10,863	10,495	10,191	9,896	9,608	9,487	9,729	9,777	9,909	10,082	10,207

**KANAWHA COUNTY SCHOOLS 2022 ENROLLMENT PROJECTIONS
BASED UPON SECOND MONTH ENROLLMENT DATA
GRADES K-12, SPECIAL ED INCLUDED**

SCHOOL NAME	GRADE GROUP	2022-23 ACTUAL	2023-24 PROJ.	2024-25 PROJ.	2025-26 PROJ.	2026-27 PROJ.	2027-28 PROJ.	2028-29 PROJ.	2029-30 PROJ.	2030-31 PROJ.	2031-32 PROJ.	2032-33 PROJ.
HIGH SCHOOLS												
CAPITAL HIGH	(9-12)	1,089	1,066	1,061	964	955	922	898	889	862	847	829
GEORGE WASHINGTON	(9-12)	1,198	1,193	1,159	1,059	1,035	1,047	1,022	1,057	1,053	1,029	1,055
HERBERT HOOVER HI	(9-12)	789	757	787	781	746	756	689	633	646	616	611
NITRO HIGH	(9-12)	827	802	775	716	674	651	631	632	601	576	556
RIVERSIDE HIGH	(9-12)	1,220	1,137	1,013	912	867	824	802	758	722	696	681
SISSONVILLE HIGH	(9-12)	563	576	545	541	521	495	492	473	481	469	455
SO. CHARLESTON HI	(9-12)	954	930	908	881	837	810	786	758	738	724	702
ST. ALBANS HIGH	(9-12)	993	992	1,040	1,008	970	950	869	844	823	796	808
HIGH SCHOOLS		7,633	7,453	7,288	6,862	6,605	6,455	6,189	6,044	5,926	5,753	5,697

**KANAWHA COUNTY SCHOOLS 2022 ENROLLMENT PROJECTIONS
BASED UPON SECOND MONTH ENROLLMENT DATA
GRADES K-12, SPECIAL ED INCLUDED**

SCHOOL NAME	GRADE GROUP	2022-23 ACTUAL	2023-24 PROJ.	2024-25 PROJ.	2025-26 PROJ.	2026-27 PROJ.	2027-28 PROJ.	2028-29 PROJ.	2029-30 PROJ.	2030-31 PROJ.	2031-32 PROJ.	2032-33 PROJ.
MIDDLE SCHOOLS												
ANDREW JACKSON	(6-8)	515	493	487	497	476	449	432	417	404	387	379
DUNBAR MIDDLE	(6-8)	300	296	288	296	290	297	290	285	266	256	251
DUPONT MIDDLE	(6-8)	423	404	422	386	364	335	327	311	298	286	280
EAST BANK MIDDLE	(6-8)	254	265	261	254	223	231	225	225	209	201	197
ELKVIEW MIDDLE	(6-8)	613	618	582	529	494	491	495	502	463	443	436
HAYES MIDDLE	(6-8)	436	435	431	408	384	379	393	392	378	363	356
HORACE MANN MID	(6-8)	399	387	356	382	366	375	363	367	352	336	326
JOHN ADAMS MIDDLE	(6-8)	705	689	725	698	723	696	728	699	683	656	641
MCKINLEY MIDDLE	(6-8)	303	279	261	235	231	218	228	226	218	208	204
SISSONVILLE MIDDLE	(5-8)	541	513	511	490	495	484	469	454	426	416	420
SOUTH CHARLESTON	(6-8)	352	351	338	327	302	285	276	278	273	262	256
WEST SIDE MID	(6-8)	377	364	366	360	330	318	317	314	299	286	280
MIDDLE SCHOOLS												
		5,218	5,094	5,028	4,862	4,678	4,558	4,543	4,470	4,269	4,100	4,026
Grand Total	KANAWHA COUNTY	23,714	23,042	22,507	21,620	20,891	20,500	20,461	20,291	20,104	19,935	19,930

School Closing and Consolidation Timeline			
30 Days Before Public Hearing	3 Weeks Before Public Hearing	Public Hearing For a Closing or Consolidation	Public Hearing Completion and Other Approval Deadlines
Public Postings	Legal Advertisement		
<p>3.1. Supporting Data The county board must prepare and reduce to writing, reasons and supporting data concerning proposed school closings or consolidations to be submitted to the WVBE for approval in accordance with policy 6204 and WV Code.</p> <p>3.1.a. Public Postings Be available for public inspection in the office of the county superintendent during the thirty days preceding the date of the public hearing.</p> <p>3.1.b. Principal Notification Be delivered to the principal and LSIC chair of both closing and receiving schools.</p> <p>3.3.a. Employee Postings Notice for public hearing shall be posted in all schools, bus garages, and maintenance areas.</p>	<p>3.3. Legal Notice The county board must provide notice for the public hearing which shall be advertised through a class III legal advertisement for three weeks prior to the date of the hearing in a qualified newspaper (as defined by the WV Secretary of State) in general circulation in the locality of any school to be closed or consolidated and in the locality of any school that has been designated by the county board to receive students from the schools to be closed or consolidated.</p>	<p>3.4.a. Public Hearing</p> <ol style="list-style-type: none"> 1. Should be scheduled for a reasonable time, not to begin before 9:00 am nor continue beyond 11:00pm. 2. At least a quorum of the county board members and the county superintendent from the county shall attend and be present at the public hearing(s). 3. A separate hearing shall be held for each school closed or consolidated and the schools designated to receive students shall also hold hearing(s). 4. More than one hearing may be held during a given day. <p>3.4.d. County Board Vote on Proposed Action After all provisions and hearings have been completed, county boards of education must take a formal vote on the closure(s).</p>	<p>3.4. Deadlines County boards of education must complete the hearing requirements on or before December 31st of the calendar year prior to the calendar year in which the closures or consolidations are to be effective. Locally funded projects related to a closure or consolidation must complete the process prior to initiation of construction.</p> <p>SBA Needs applications Before a project will be considered by the School Building Authority of WV, a school that is planned for closure, as part of their Needs Submission, shall have had its stated closure approved by the WVBE.</p> <p>5.0. Technical Assistance When planning a school closure, counties should seek technical assistance from the WVDE before their public hearing.</p>

This timeline (revised 3/16/22) is provided by the WVDE as a technical assistance tool for county boards to use in the preparation of planning their actions for a proposed school closure or consolidation. This timeline does not reduce or eliminate the requirements found in WV State Code or WVBE Policy 6204 as they relate to school closures or consolidations. This document does not replace or supplant legal assistance provided by counsel engaged to represent the county.