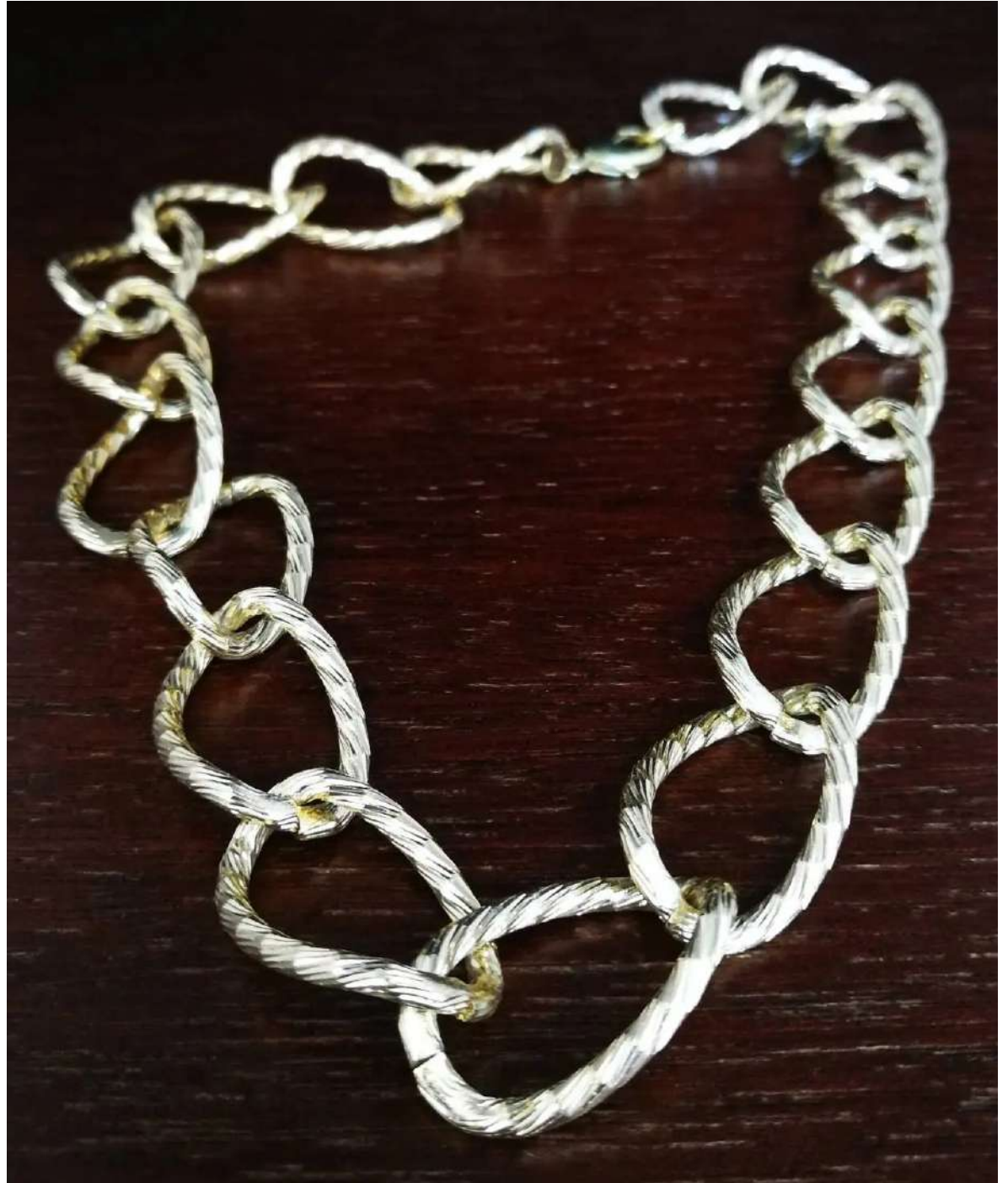


How to Make a Link Chain





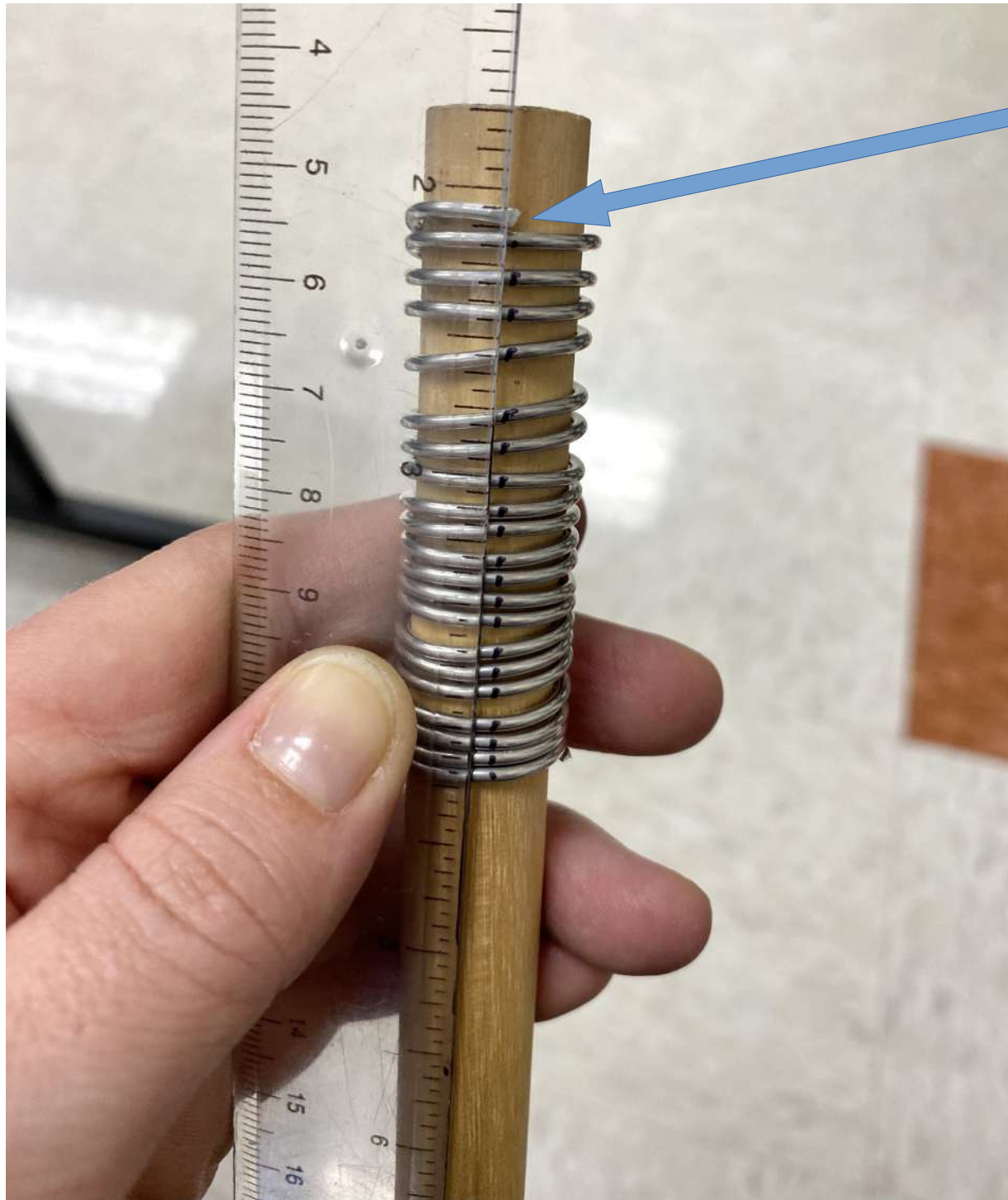
Gather Materials:

- **Medium gauge aluminum wire works best.** ****It's soft enough to manipulate with your hands and holds it's shape relatively well.****
- **Dowel** ****I used a 5/8"** dowel but you can choose the size that works best for the size of your gem.******
- **Wire cutters**
- **Sharpie**
- **Ruler**



**Wrap the wire
around the dowel.**

I wrapped my wire
around the dowel
20 times and got a
~12" chain (it was
actually a little bit
longer) when I
finished.



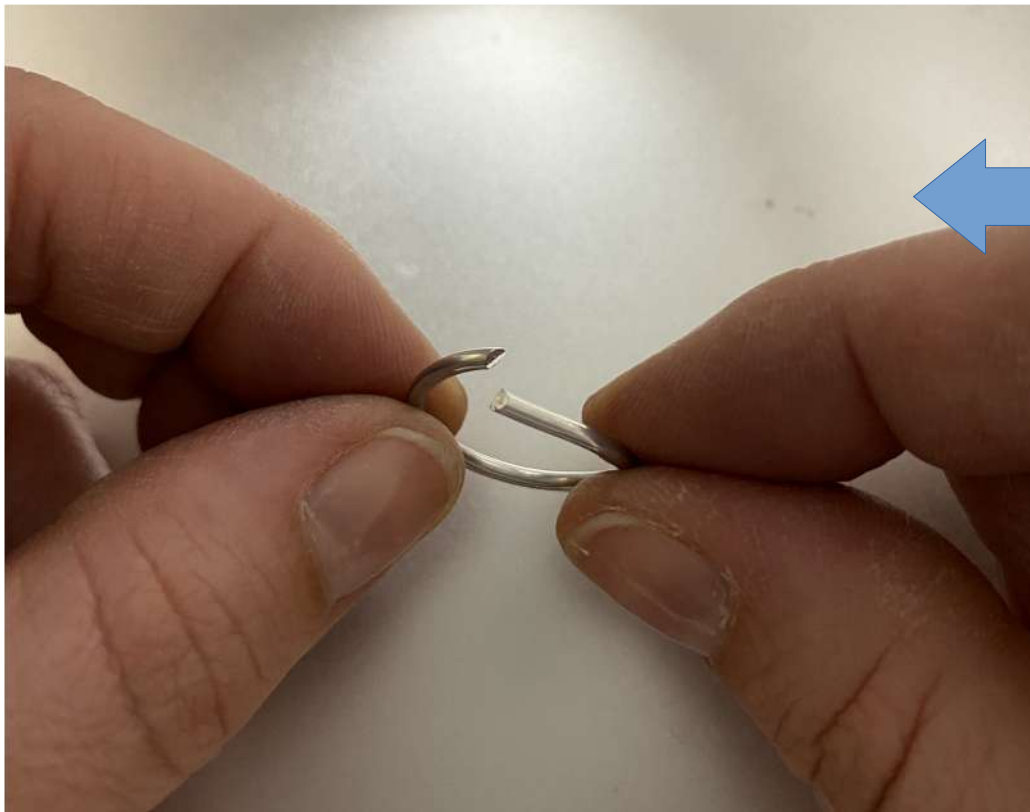
Lining the ruler up with the starting of the wire, lay it vertically on the coil and mark a straight line running down the coil with a Sharpie.



Carefully
remove the coil
from the dowel
without
warping it too
much.

Start clipping
the wire on
each of the
Sharpie marks,
one at a time.

This will give you
open links.



Simply close the link
with your fingers and
keep adding links to
your chain, closing each
one after you're finished
adding it to the chain.





After they're all joined, you're going to have a marvelous chain that you will be able to add to your gem when it's mounted on the final paper.



Boom!

Looks Awesome!

Right?!