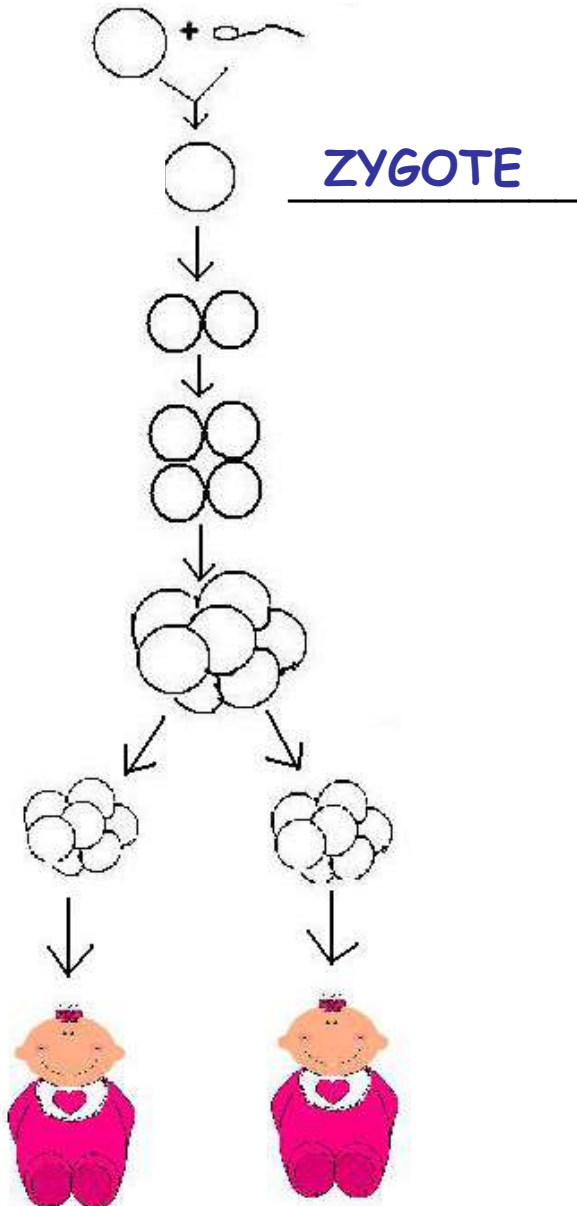


MAKING TWINS



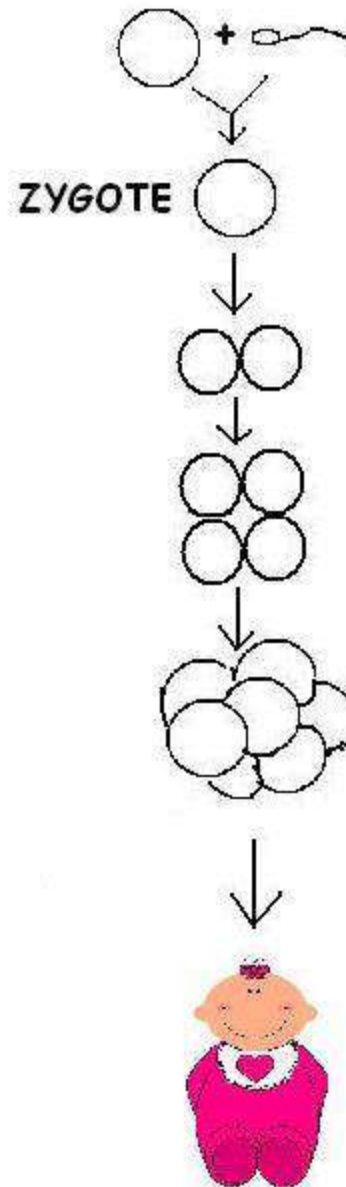
Slide show by Kelly Riedell/Brookings Biology

Mom's egg + Dad's sperm



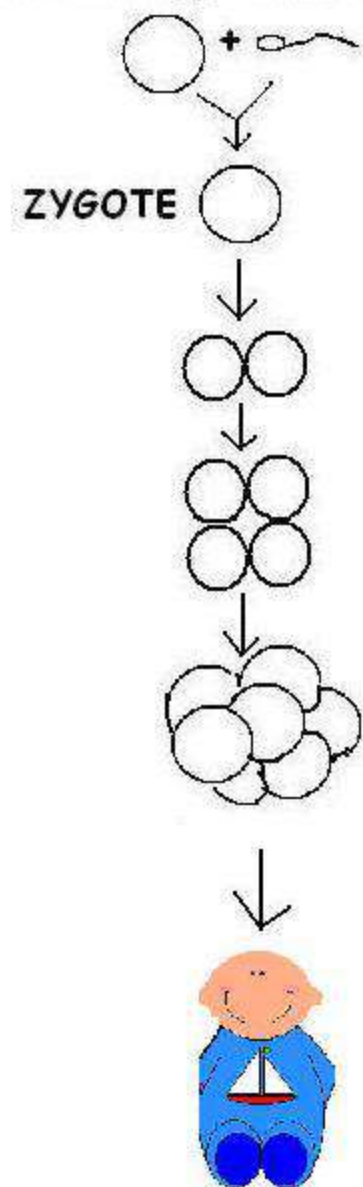
MONOZYGOTIC = maternal
IDENTICAL DNA

Mom's egg + Dad's sperm

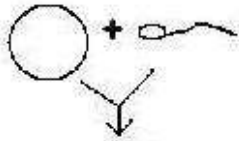


DIZYGOTIC = fraternal
DIFFERENT DNA

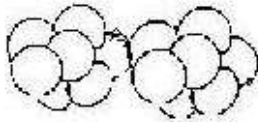
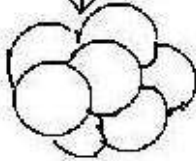
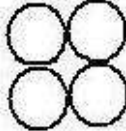
Mom's egg + Dad's sperm



Mom's egg + Dad's sperm



ZYGOTE



CONJOINED TWINS

Babies are born
attached to each other