



## **RAWLINSON ROAD MIDDLE SCHOOL- Home of Raider PRIDE**



**Student Name:** \_\_\_\_\_

**Date:** \_\_\_\_\_

**Course:** \_\_\_Art\_\_\_\_\_ **Teacher:** \_\_\_Mrs. MacAlpine\_\_\_\_\_

**Teacher Office Hours:** \_\_\_9am-11am\_\_\_\_\_ **Teacher Email:** \_\_\_AMacAlpine@rhmail.org\_\_\_\_\_

**Other form of contact if help is needed:** \_\_\_Canvas Message\_\_\_\_\_

### **Instructions to complete the student packet:**

Read each assignment and draw what it asks on a separate piece of paper. If you don't have paper available to you, you may use the back of the assignment pages. Each drawing can be completed in pencil or pen (whatever you have available to you). You may use colored pencils, markers, or crayons if you have them.

### **Instructions to submit work:**

Take a picture of each drawing and submit it on Canvas. Each assignment has a place for each photo to be submitted in the Remote Learning Module or you can send pictures of completed packet work to [AMacAlpine@rhmail.org](mailto:AMacAlpine@rhmail.org).

---

### **Technology**

**Laptop issues:** please **email** the help desk- [helpdesk@rhmail.org](mailto:helpdesk@rhmail.org) or **phone** at **(803)981-3531** and include the following information:

**Student ID** number (ex: RS12345)

**Parent/Guardian name**, Parent/Guardian email and phone number contact information.

**School Name / Teacher name**

**A description of the problem with the computer**

The Rock Hill Schools Technology Department Staff will be on call between the hours of 8AM - 8PM

---

**Launchpad:** <https://launchpad.classlink.com/rockhill>

**Canvas:** <https://rockhill.instructure.com/login/canvas>

**\*\* For more information on remote learning, please visit:**

**RRMS website at** <https://www.rock-hill.k12.sc.us/domain/2596> **or**

**RHS District website at:** <https://www.rock-hill.k12.sc.us/elearning>

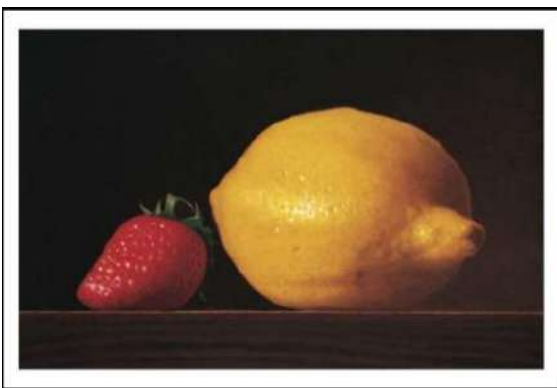


### Art Assignment #8

Directions: On a separate piece of paper, draw two things in correct proportion to each other or to scale with one another. Proportion and scale are principles of design. Fill up as much of your paper as you can with your drawing.

Definition: Proportion and scale in art describe size, location, or amount of objects in an artwork.

Examples of Proportion and Scale:





### Art Assignment #9

Directions: On a separate piece of paper, draw an artwork that shows depth (foreground, middle ground, and background). Fill your whole paper with your drawing.

Definition: Depth is the apparent distance from front to back or near to far in an artwork. Techniques of perspective are used to create the illusion of **depth** in paintings or drawings. The foreground has larger objects towards the front (closer to the viewer). The middle ground contains more medium sized objects in the middle of the artwork. The background contains objects that are small and far away from the viewer.



### Examples of Depth in Art:





### Art Assignment #10

Directions: On a separate piece of paper, draw a still life of at least 3 found objects (anything you can find around you).

Definition: A still life is a grouping of inanimate (cannot move on their own or non-living) objects set up or arranged by the artist. The artist then draws the still life while observing it.

Examples of still life drawings:

