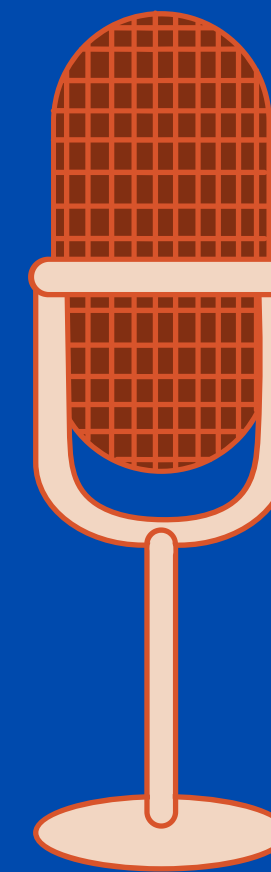
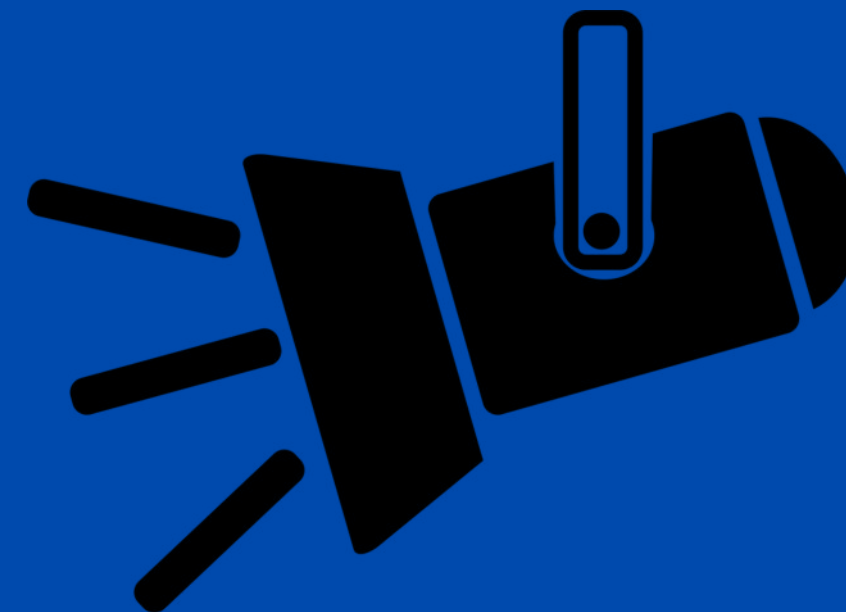


Basic Lighting and Mics

Basic Vocabulary Guide



Types of Microphones

Omnidirectional: Sound recording with equal volume in all directions (360 degrees)

Bidirectional: Called a figure eight. Front and back of mic picks up sound.

Cardioid: Picks up sound from 180 degrees. Or front and sides of the mic.

Super Cardioid: More sensitive. Have someone right in front of the mic. It also provides better sound to isolate noise in a room.

Hyper Cardioid: More sensitivity in the rear of mic. Good at rejecting feedback.

Shotgun: Is a long slender tube that picks up sound at the front and blocks out sound on sides.

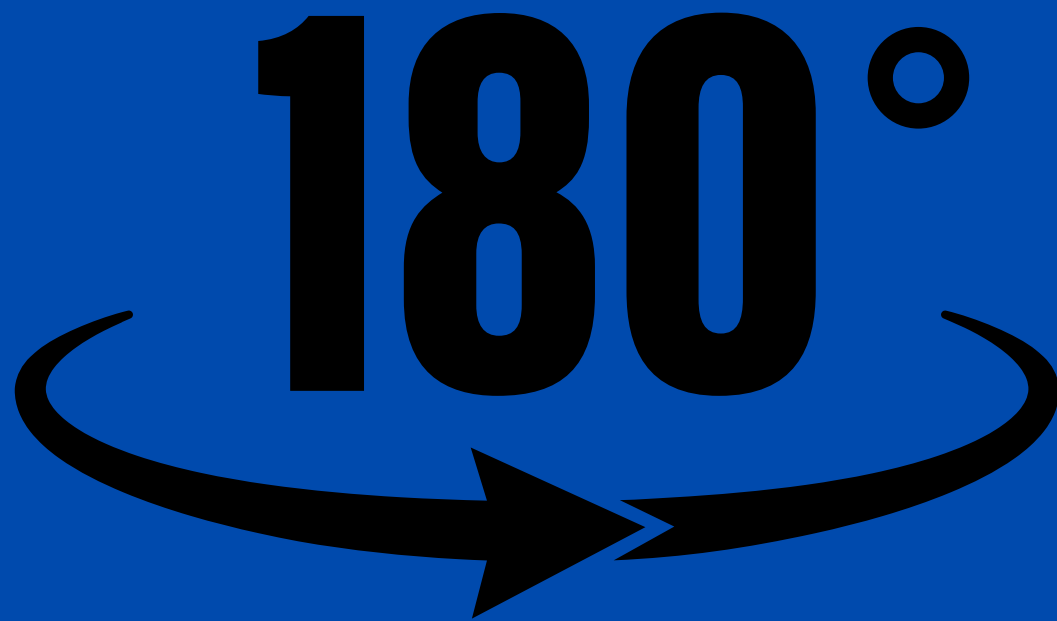


180 RULE

HOW TO USE THE 180 DEGREE RULE ON A FILM SET

Draw a storyboard that has the camera location. Then add where the actors will be. The camera shots must never cross the imaginary 180 degree plane.

If this happens the viewer will get confused because it will seem unnatural in the shot.



ASPECT RATIO

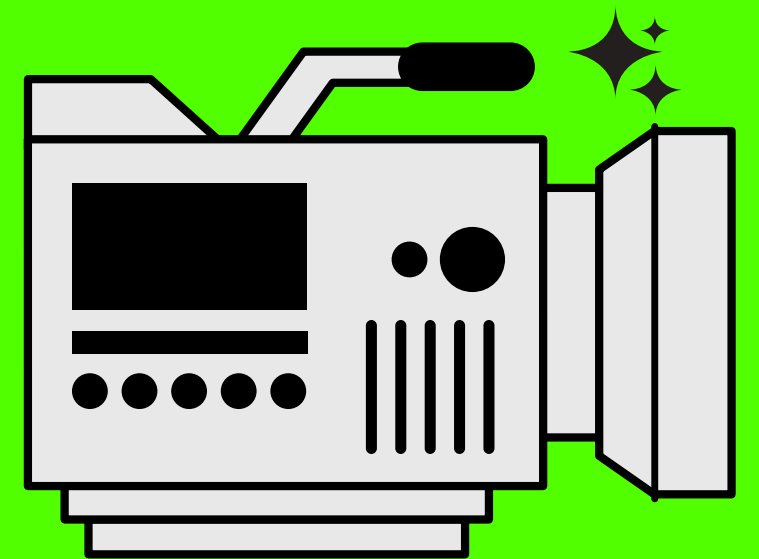


ORIGINAL WAY TO FRAME SCENES
BEFORE WIDESCREEN TOOK
OVER!

**AKA
LETTER
BOX**

OLD STYLE

ON YOUTUBE THE EXPORT
WILL BE 480P OR 640P





HOW MOST VIDEOS ARE FORMATTED

**AKA HD
WIDESCREEN**

MODERN STYLE

ON YOUTUBE THE EXPORT
WILL BE 1920X1080

