

LIGHT DIRECTION SETUPS FOR PORTRAITS



FRONT LIT

Light source from behind the photographer or camera



Miracle Guillory in available light. ISO 100 1/30sec f2.8 100 mm Canon 5DMark2

Examples of good Front Lit sources:

Find a room which has either just one door or window with no other opening to exterior e.g garage. Place your subject in the doorway or window and turn off interior lights. If you use a doorway, position yourself outside and shoot in at your subject. If you choose a window, clean the window or open it and shoot in at your subject.

Studio lighting can be used to mimic this look but it may require the light source be raised above your subjects' head but directly in front of her as shown in behind-the-scenes picture.

One Canon Speedlite inside my homemade beauty dish.





SIDE LIT

Light source from about
45° either left of right of
subject.

SIDE LIT with Reflector

Light source from about 45° either left



See the Behind-the-Scenes picture in former UC Riverside Chancellor Timothy White's office using my homemade beauty dish as the main light source on the left and the reflector on the right.

Canon 5DM2 with 100 mm lens. ISO 400
1/250 f4. 2 Canon Speedlites.





BACK LIT

Often results in Silhouettes
without any detail in the
subject

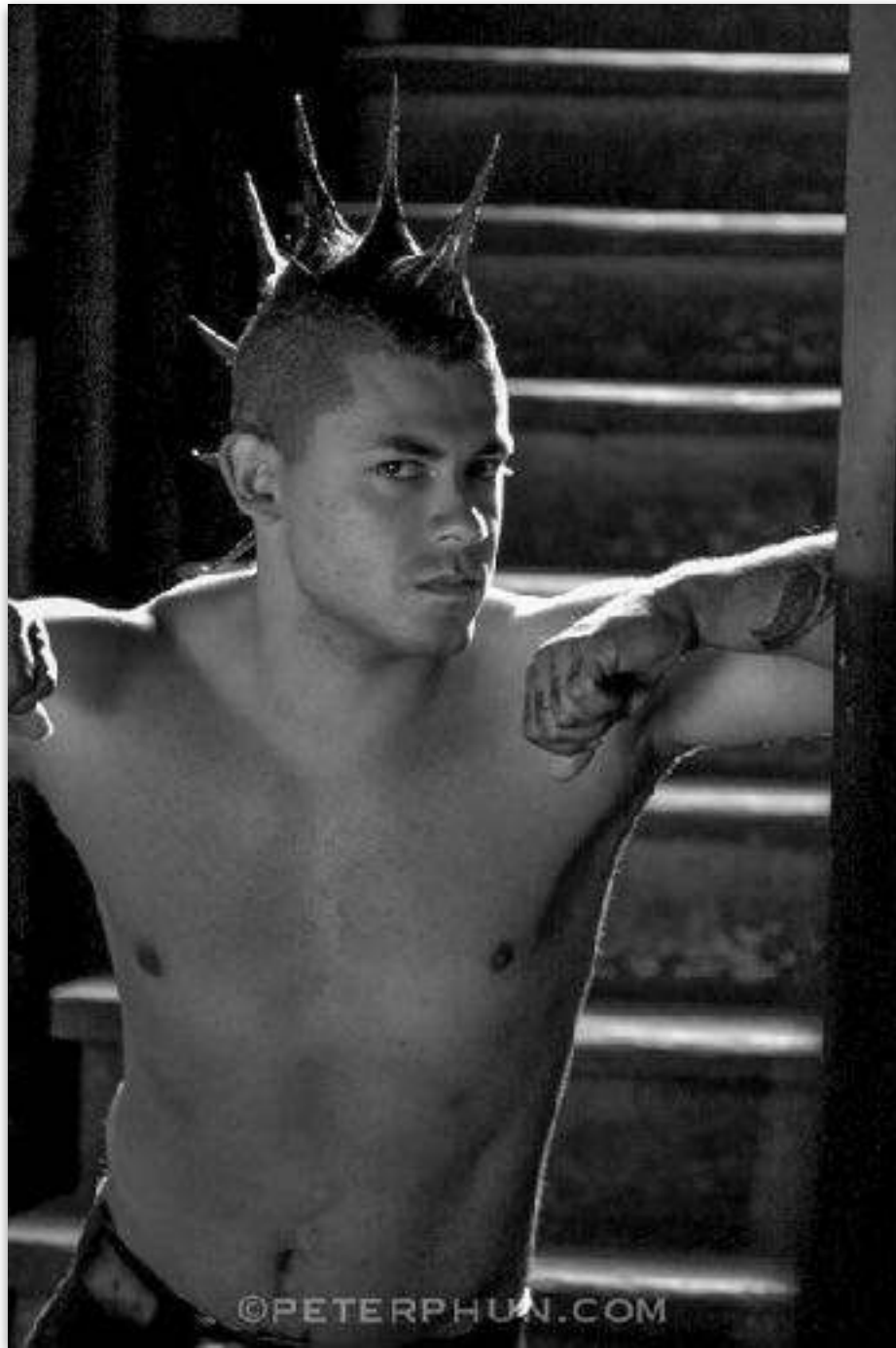


BACK LIT

Using a reflector to kick back light into your subject's face is a fairly common and simple technique to get dramatic mood with little fuss.

You may have to increase your ISO to get a shutter speed you can hand hold.

Canon 40D 100 mm lens
ISO 800 1/60 @f2.8



Keep in mind, I used a softbox as my light source in the setup diagrams, but truthfully, that single light source can be any light source including the sun, a continuous light source, a speed light or a studio strobe.

This tutorial is mostly to illustrate direction and placement of light as it relates to portraiture.