

# LanSchool Help Sheet

LanSchool is a program that allows the instructor of a class to have complete control over the student stations in the room. It's made up of one main menu and the Console that are visible only from the Teacher's computer.

To access the LanSchool menu

In the system tray at the bottom right corner of your computer screen, right click the LanSchool icon. (It's the greenish "circle of circles") The menu appears.



This menu contains all of the options available from the teacher computer. To enable an option, click it in the menu:

## LanSchool Menu



### ➤ Show Teacher

This feature enables you to broadcast your screen to all students on the same teacher channel while you continue to work. Everything you do will be broadcasted to your students. By default, when you're broadcasting, students can't use their keyboards or mouse devices. The broadcast session continues until you right-click the LanSchool icon again and click **Stop Showing Teacher's Screen**.

### ➤ Blank Screen

This feature allows you to blank one or all of the student screens. When this is done, the students will not be able to do anything on their computers. Their screen will go black with a message prompting them to look towards the front of the classroom, also their mouse and keyboard become deactivated. This is until you click on the **Unblank Screen** option.

### ➤ Limit Web

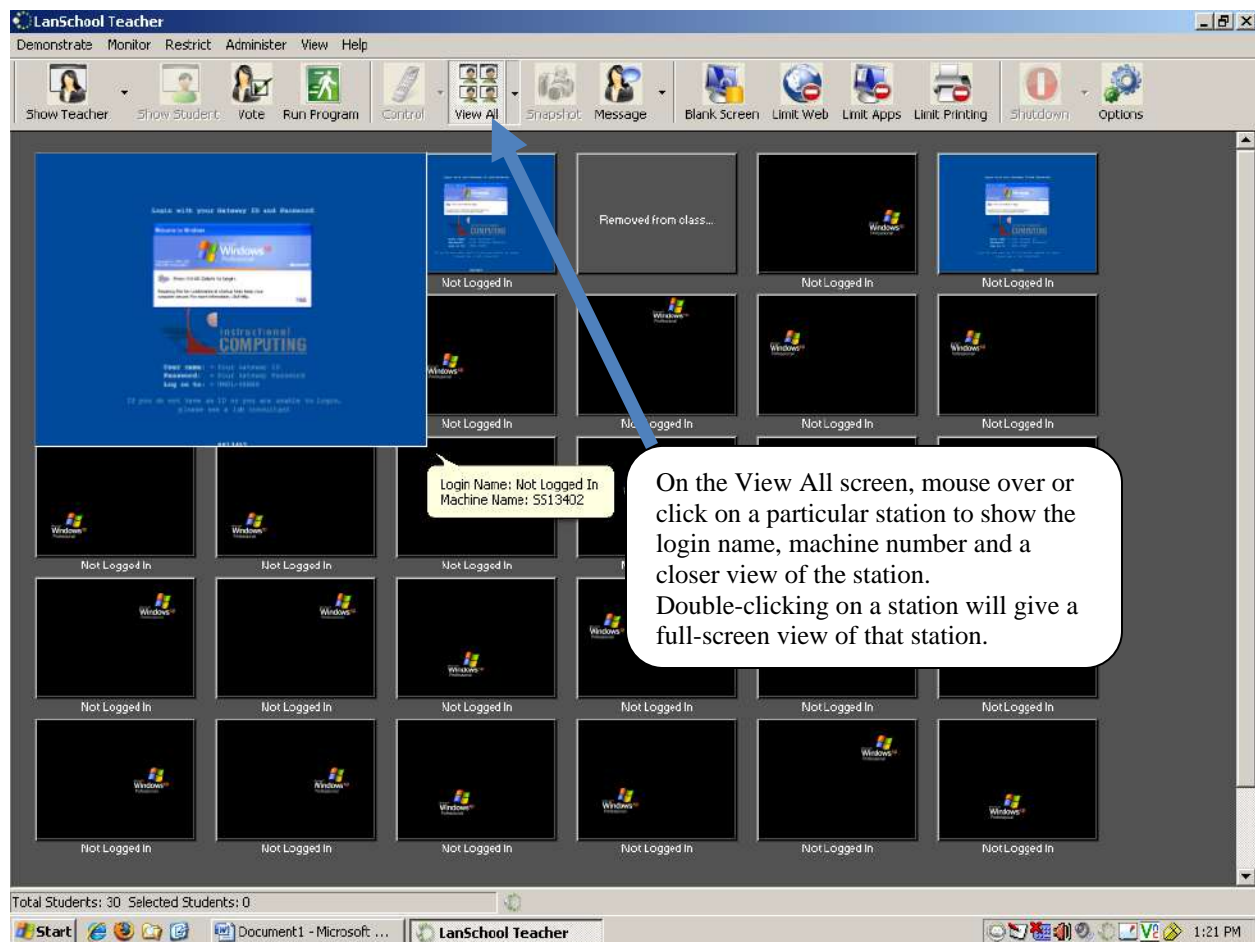
This feature allows the Instructor to block web access to the students. When this is done, the students will not be allowed to access any web page. This will stay active until the **Stop Web Limiting** option is chosen.

### ➤ Limit Applications

This option allows you to limit the use of applications by the students. They will not be allowed to open any programs on their computers. To cancel this feature, simply press the **Stop Application Limiting** option.

## LanSchool Console

The LanSchool Console is where most of the features available within LanSchool are located. To access the console you can either left click on the LanSchool icon in the system tray, the bottom right corner of the computer screen, or right click the same icon and choose the **LanSchool Console** option.



This is the LanSchool Console, which contains all of the features that you could use within the program. Along with the features listed before from the LanSchool Menu, there are a number of other features available.

### ➤ **Vote**

The Vote feature allows you to send a question and possible answers to the students and have them select an answer and submit it back to you. You will be able to track the student's responses.

### ➤ **Run Program**

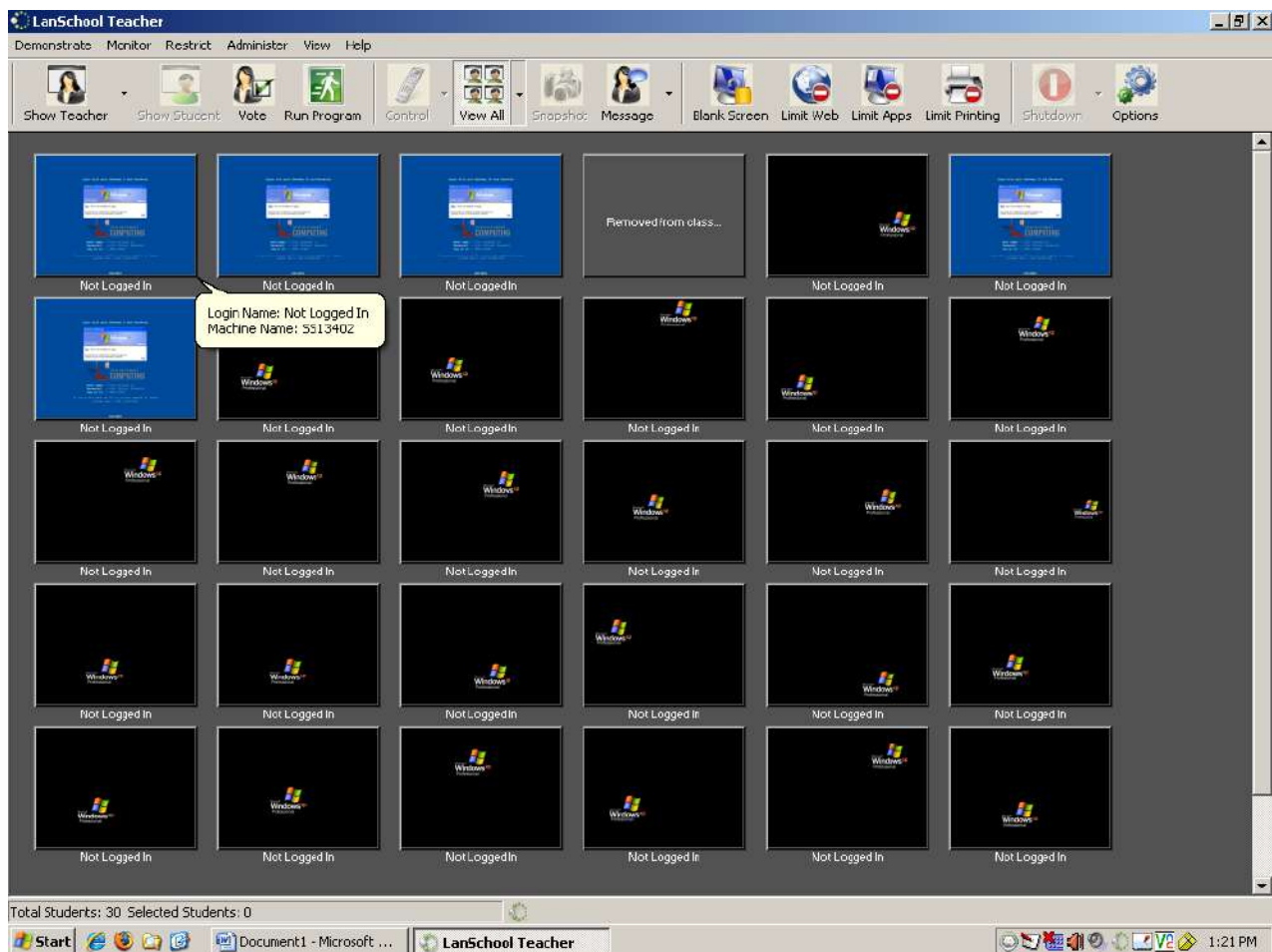
This feature allows you to run a selected program on the student's stations. They will still have full control over their computers, controlling the program.

### ➤ **Control**

This feature allows you to control a specific student station. In this mode, your screen becomes theirs, and you take over control of their mouse and keyboard. You can open and close applications, type text into a field, and anything else you would normally be able to do if you were sitting in front of the actual student's station.

### ➤ **View All**

This allows you to view all of the student's stations in a thumbnail version. You can monitor the student's activities easily this way. Using this screen you can select an individual student to use an option on while view the other screens.



### ➤ **Message**

This feature allows you to send a message to all of the student stations. You have the options of making the message optional or mandatory to read, and of sending the message anonymously.

### ➤ **Limit Printing**

This feature allows you to limit the printing of the student's stations. They will no longer be able to print anything, to any printer.

### ➤ **Handout or Collect Files to Selected Students**

This option allows you to send or collect files from student computers. The student must be logged in for this function to work. When collecting files, you specify the destination folder on the teacher's machine. LanSchool will create a sub-folder there for each student's file. The name of the sub-folder will be [Student's Login name]-[Student's Machine Name]. This way you could collect a file from every student and still keep them straight on your machine.

### ➤ **Anti-tampering controls**

LanSchool v7.0 does not allow a student to mischievously "unload" the software or disrupt the classroom by unplugging the network cable.