

**All Kids.
All the Time!**

Kindergarten Orientation 2020-21



**Hope Valley
Elementary School**

Meet your Kindergarten Teachers & TAs

- Tricia Abbott
 - Tricia.Abbott@chariho.k12.ri.us
 - Dawn Tucker – TA (3 hours)
 - Fran Smith – Building TA
- Tricia Scheer
 - Tricia.Zanella@chariho.k12.ri.us
 - Jen LaBelle – TA (3 hours)
 - Laurie Mello – Building TA
- Mr. G, Ms. Donna, Mrs. Jaruta
 - Giuseppe.Gencarelli@chariho.k12.ri.us
 - Donna.Sunderland@chariho.k12.ri.us
 - Sharon.Jaruta@chariho.k12.ri.us



If you have any questions, you can either email, call, or send in a note.

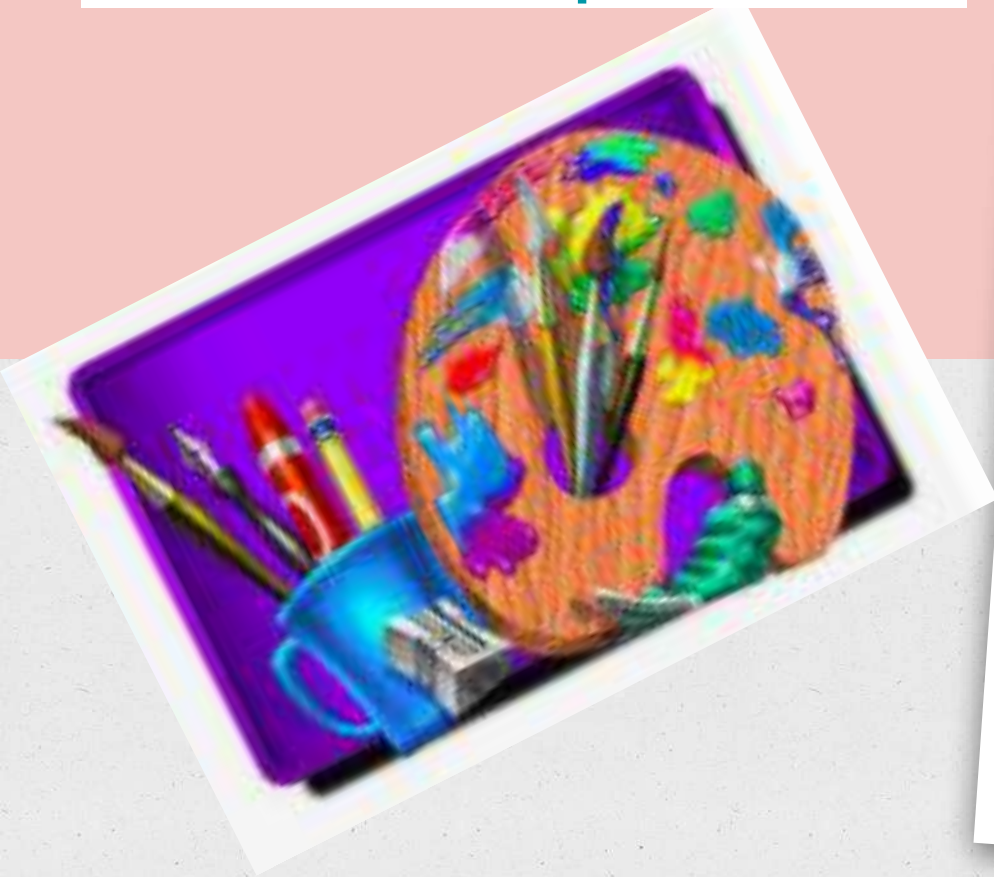


Tara McAloon - Nurse and Health Teacher
Email: Tara.McAloon@chariho.k12.ri.us
401-539-2321 (School), 401-552-7014 (Direct Line)

Important Information

- ☐ Kindergarten Immunizations and Physical Exams must be completed for your child to begin school on the first day. If not, please talk to the nurse (call or email).
- ☐ Make the nurse aware of any medical problems, diet needs, etc.
- ☐ Make sure the emergency contact information is always up to date.

Meet Our Specialists



Specials

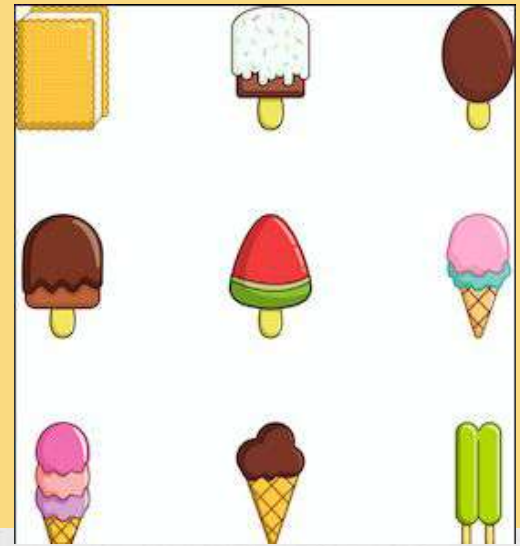
Library - Mrs. Ward
PE - Mr. Gargaro
Music - Mrs. McKee
Art - Mrs. DiFranco
Spanish - Senora Giuliano



Meet our PTO

- PTO Presidents:
 - Leah Sousa & Kristin Clarke
- PTO Treasurer:
 - Stephanie DaPonte
- PTO Secretary:
 - Chloe Morgan
- PTO Communication:
 - Chelsea Baker

Hope Valley School PTO email is
hopepto15@gmail.com



WELCOME BACK DRIVE THRU ICE CREAM EVENT

Come by to grab an ice
cream and HELLO!

Thursday, 9/10 at 6:00 pm

Hope Valley School Resources for Parents/Guardians

- * Office Staff: Donna Sunderland and Sharon Jaruta
- * School Principal: Mr. G
- * School Nurse: Tara McAloon
- * School Phone: 539-2321
- * School website: <https://hopevalley.chariho.k12.ri.us/>
- * Follow us on Social Media:
 - * Facebook > [Hope Valley School \(@HopeValley15\)](#)
 - * School Twitter > [@MrG_HVES](#)
 - * District Twitter > [@CharihoRegional](#)



Other Hope Valley School Staff

Giuseppe Gencarelli - Principal

MaryKate Stimpson - School Psychologist

Kasey Girton & Natalie Baggeson - Resource Teachers

Kerry Pastore - Reading Consultant

Karen Pellegrino - Reading Specialist

Eric Mulvey - Math Specialist

Mrs. P & Ms. Terry - Cooks



Some Dates to Remember...

- ❖ Thursday, September 10th at 6:00 pm
Welcome Back Drive Thru Ice Cream Give Away
- ❖ Monday, September 14th
First Day of School
- ❖ Tuesday, September 29th
Open House (Grades PreK, K, 1)
- ❖ Monday, October 5th at 6:30
PTO Virtual Meeting



Before & After School Programs



Cost is \$3.50 per day.
Contact office for more
information.



Call the YMCA for more
details at 539-2306.

Rhode Island Department of Education > Home

Important Links

[Reopening Plan-Final](#)

[Smore Weekly Update](#)

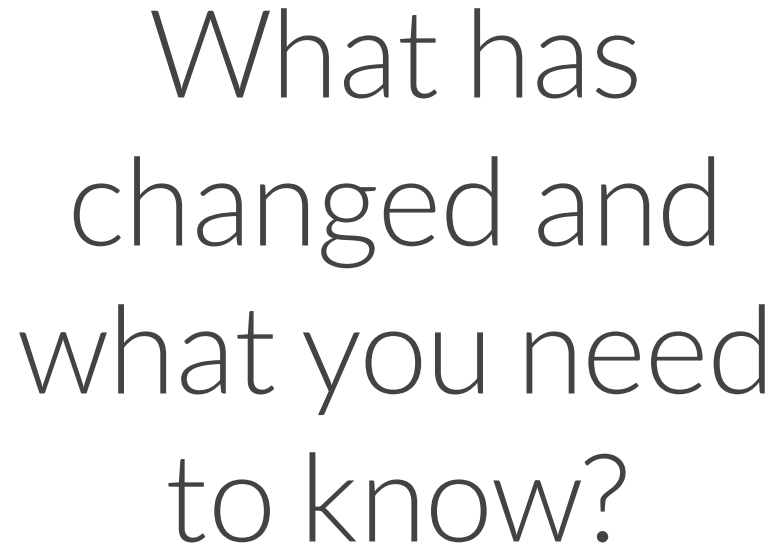
[RIDE Playbook](#)

[Revised RIDE Calendar](#)

Check out the
district website
for ongoing
updates!

[Health
and
Safety](#)

[Chariho Website](#)

The image features a stack of three white, rectangular sticky notes. The top note is slightly offset to the right and forward, showing the edges of the two notes beneath it. The notes are set against a background that is split horizontally: the top half is a solid purple color, and the bottom half is a light grey color with a subtle, grainy texture. The text on the top note is written in a clean, black, sans-serif font and is centered.

What has
changed and
what you need
to know?

Arrival and Dismissal



Be sure to read
[Mr. G's Weekly Update](#)
for important information

Lunch

www.myschoolbucks.com

Contact Fran Sayer

Frances.Sayer@compass-usa.com

or (401) 552-7078.

Mr. G's Weekly Update



**HVES IS A
PEANUT AND
TREE NUT
FREE ZONE**

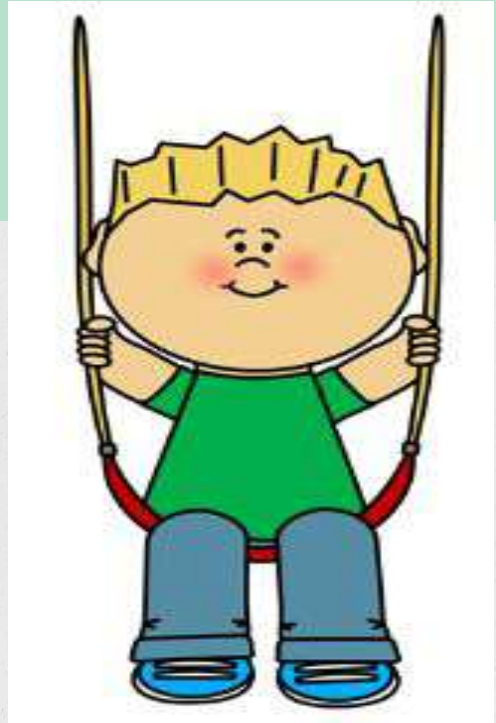
Revised 04/01/07 www.CompassUSA.com

We strongly encourage you to pack your child healthy snacks and items they can open themselves to avoid contact with food.

Recess

- 30 min of daily recess
- designated recess area (blacktop, playground, lawn, Langworthy Field)
- Classrooms separated by at least 14 feet
- Masks can be removed outside as long as students can maintain 6 feet of distance.
- Students will need to wear masks if they are 3-6 feet apart.
- Students should not be closer than 3 feet.
- Teacher assistant will be assigned to each classroom during recess.

Movement & Mask Breaks



Any Questions?

