



ISD #750 – ROCORI School District

Community Task Force Meeting #3 | November 10, 2021



AGENDA

- **Thoughts Since Last Meeting?**
 - » Facility Tours Update
- **Discussion Topics:**
 - » Safety and Security
 - » 21st Century Learning
 - » Career and Technical Education
 - » Fine Arts/Music
- **Small Group Criteria Development**
- **Other?**
- **Next Meeting Dates, all from 6:00pm-8:00pm**
 - » Meeting #4: Monday, November 29, 2021
 - » Meeting #5: Thursday, December 16, 2021
 - » Meeting #6: Wednesday, January 5, 2022
 - » Meeting #7 (if needed): Tuesday, January 18, 2022



SAFETY AND SECURITY





SAFETY AND SECURITY

What does your culture want to be?

- Open and welcoming or project an image of control and security?
- How does this image support educating children?
- Should we maintain a reasonable balance between entry control, screening of visitors and welcoming experience for the community?

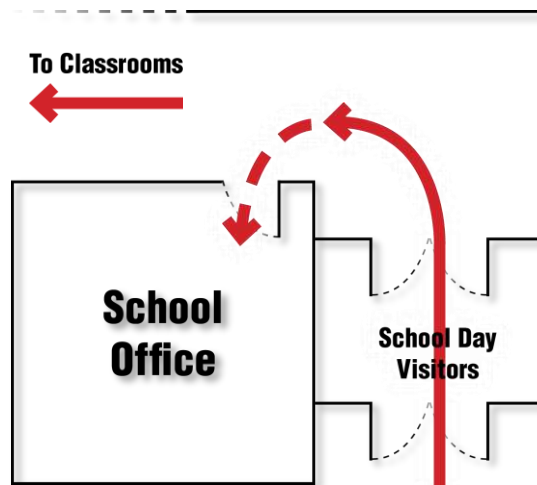




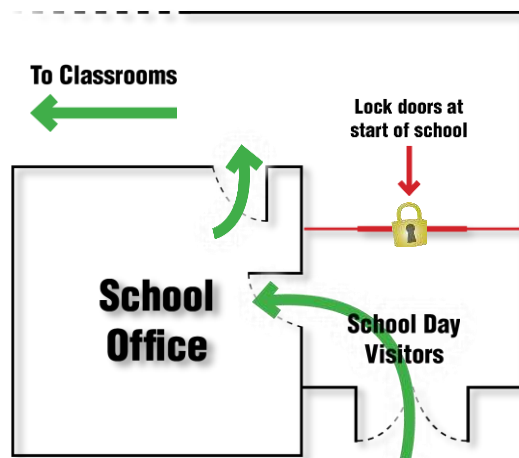
SAFETY AND SECURITY

Considerations

- Secured Vestibules
- Video Surveillance
- Entry Screening
- Monitored Visitor Parking
- Security and Classroom Safety Zones
- Reinforced Classroom Entrances
- Site Safety
- Visual Notification



- *Visitors could easily bypass the office*
- *Passive supervision of visitors is difficult to manage*

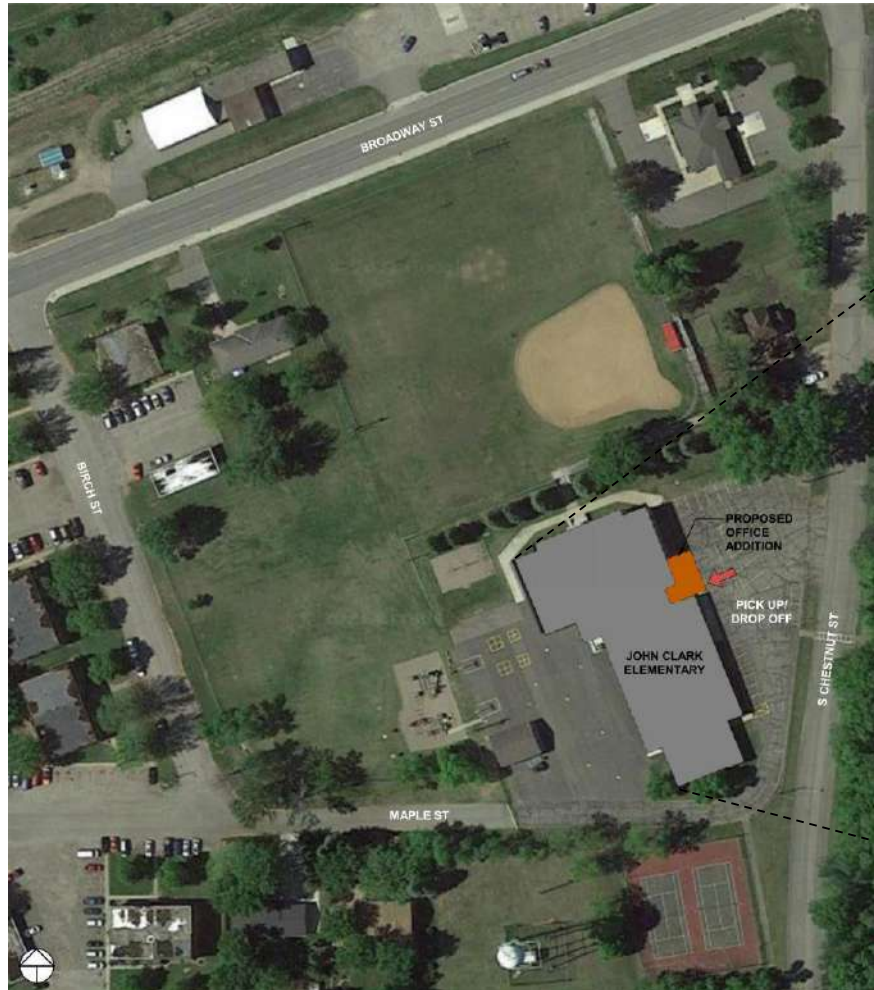


- *Access to classrooms is locked once school begins*
- *Visitors are forced to enter through the school office*

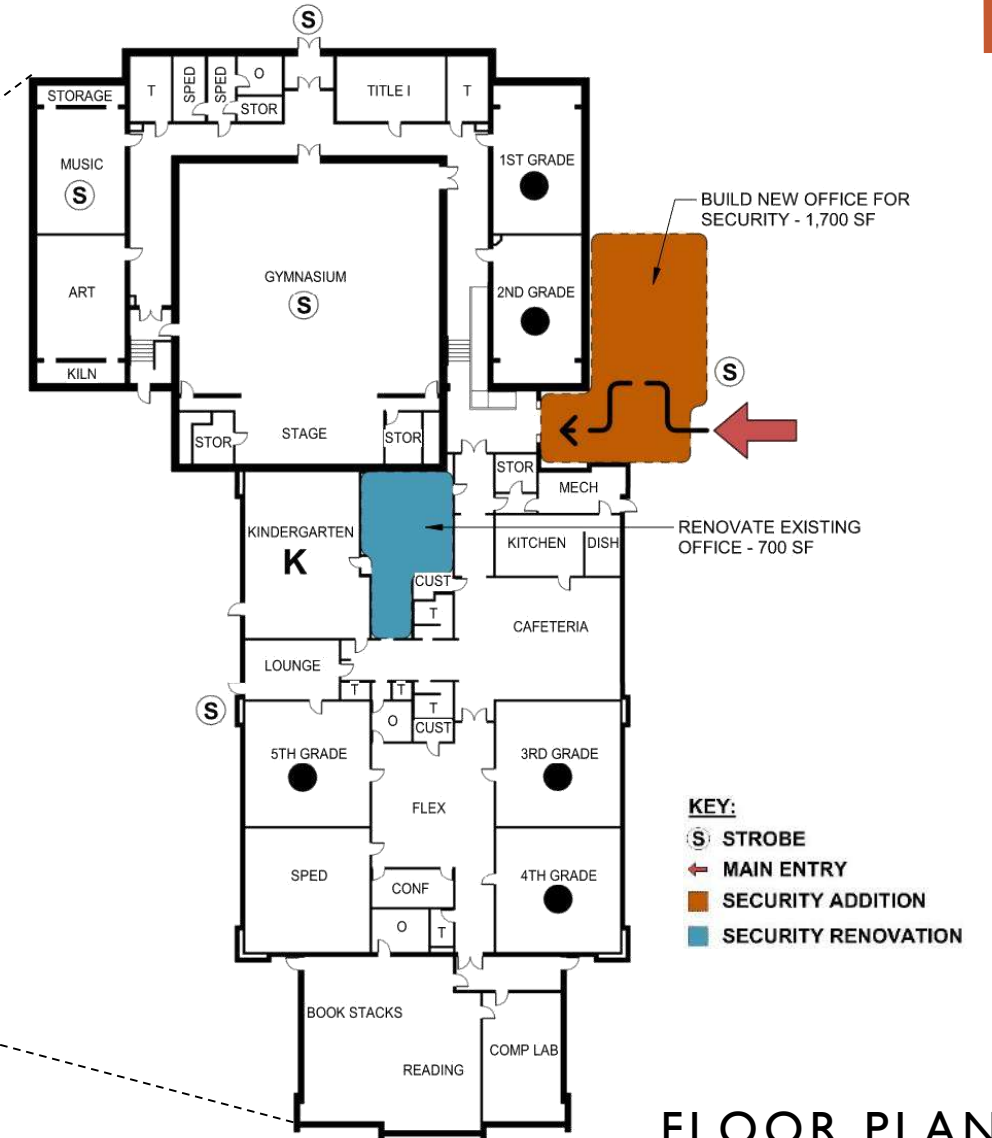


SAFETY AND SECURITY

JOHN CLARK ELEMENTARY



SITE PLAN

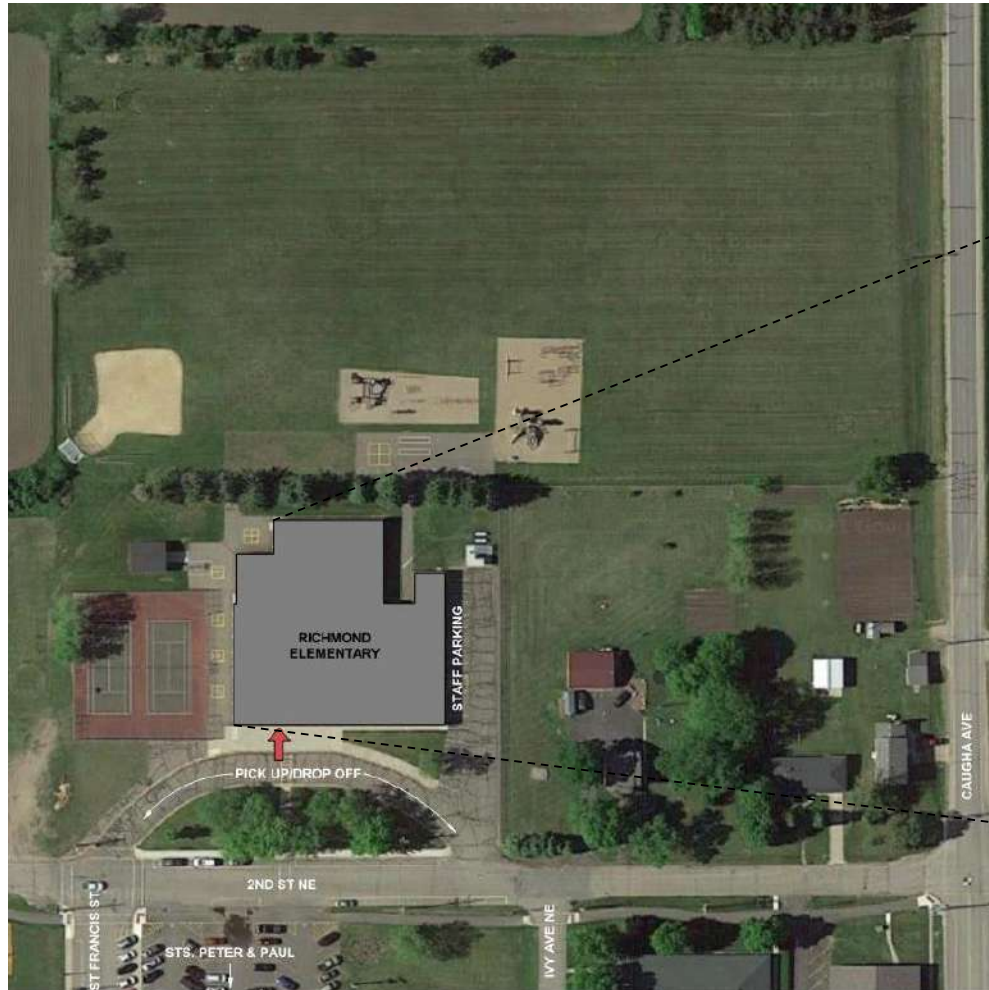


FLOOR PLAN

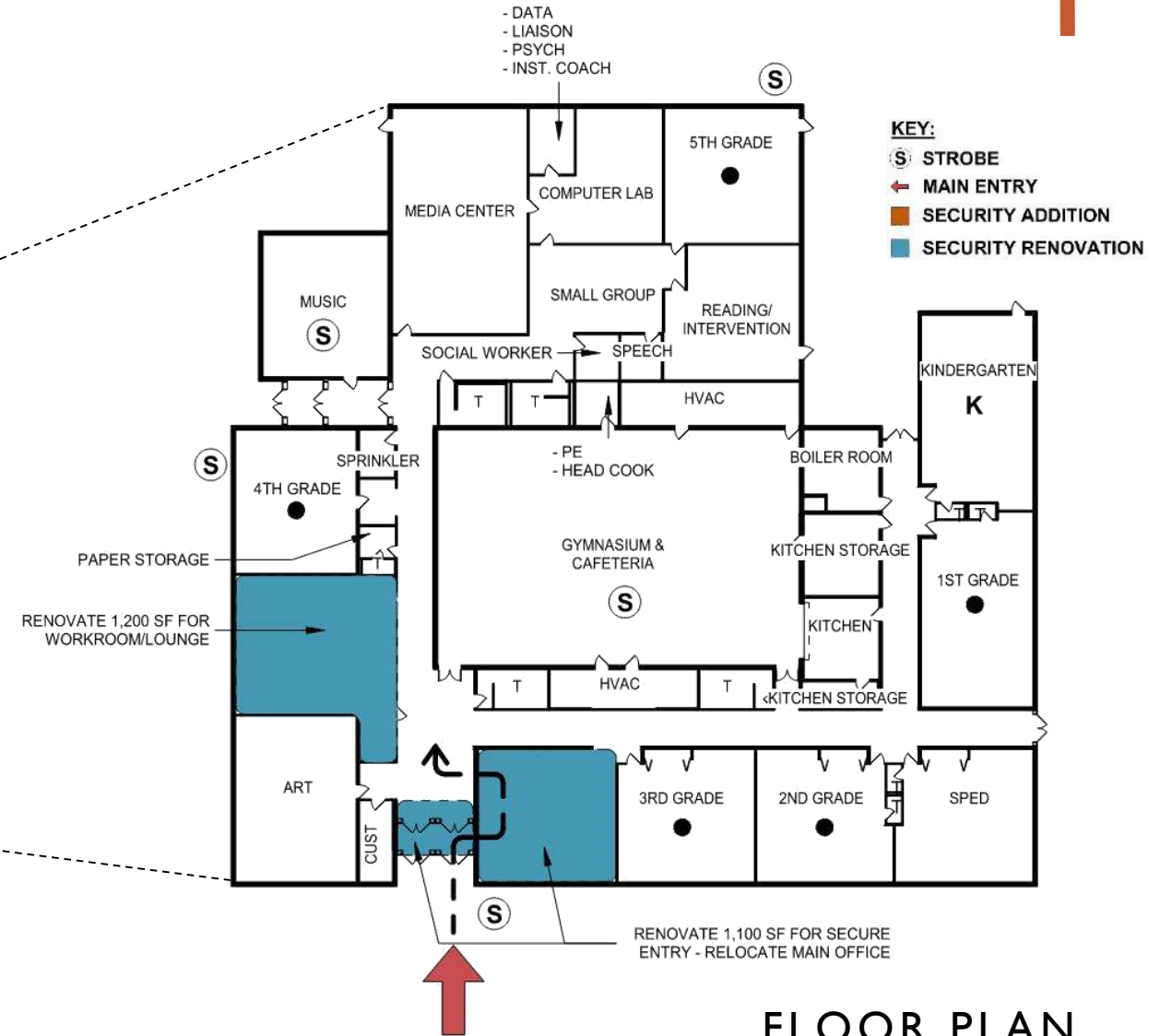


SAFETY AND SECURITY

RICHMOND ELEMENTARY



SITE PLAN

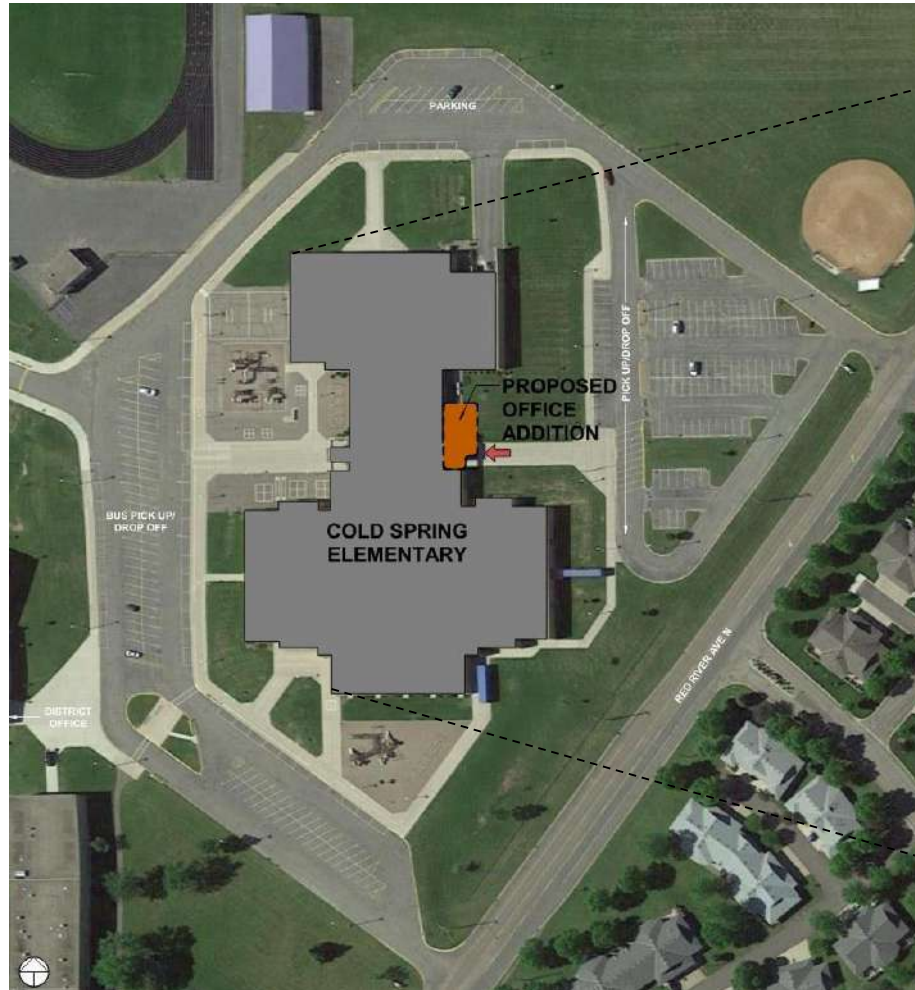


FLOOR PLAN

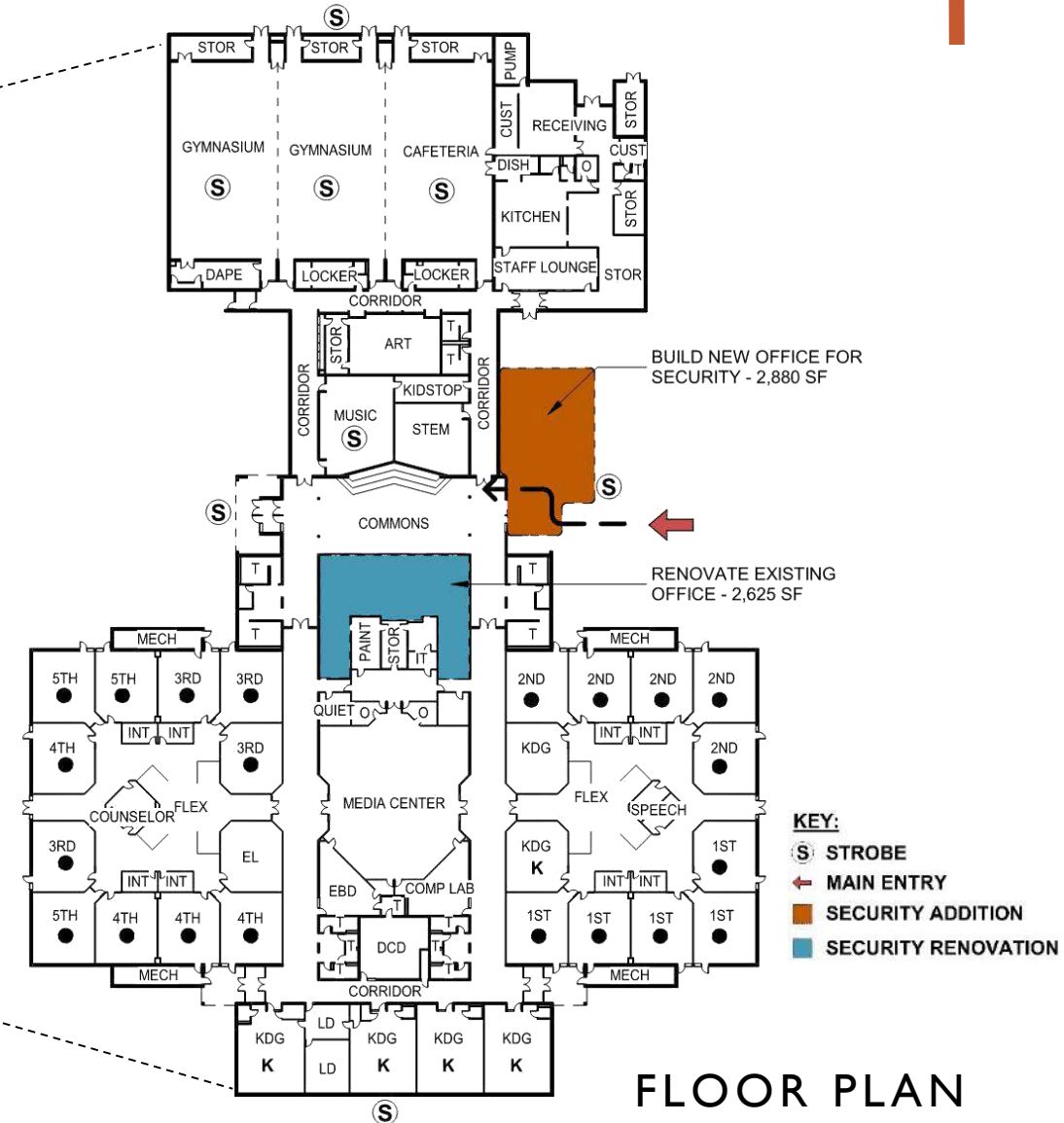


SAFETY AND SECURITY

COLD SPRING ELEMENTARY



SITE PLAN



FLOOR PLAN



21st Century Learning Career and Technical Education Fine Arts | Music



21st CENTURY LEARNING

PERSONALIZED LEARNING

- Learning can happen anywhere – not limited to the classroom
- Every student has their own path to success
- Facilities need to be flexible and dynamic to empower learners and educators
- Power of Student Choice

How can your learning environments ignite passion and engagement from your students?

Personalized Learning has many facets, and space needs to adapt to meet the needs of every individual student – today and in the future





21st CENTURY LEARNING PERSONALIZED LEARNING

Variety of spaces different from the classrooms
empowers student choice and learning style





21st CENTURY LEARNING RENOVATION : TRANSFORMATION



Before



Outcomes

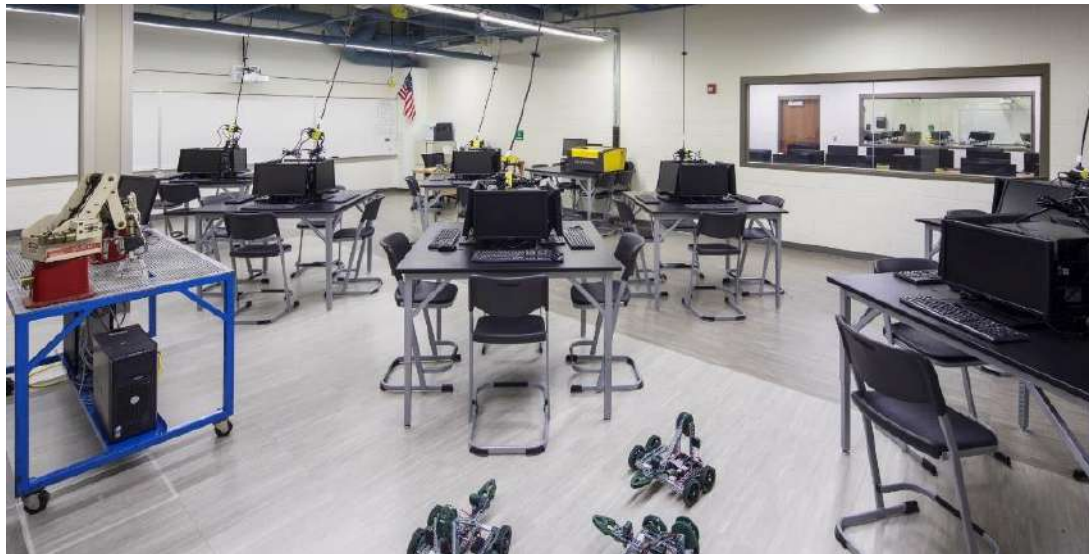
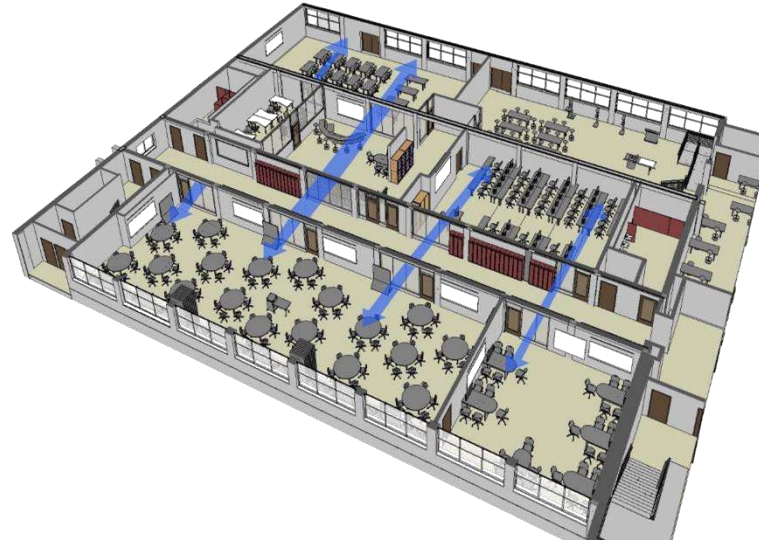
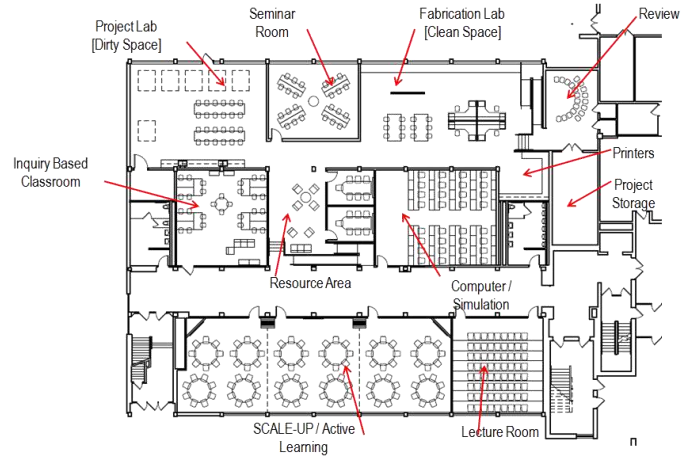
- Transparency for daylight and supervision
- Creation of shared resource space (every department / grade)
- Flexible furniture

After



21st CENTURY LEARNING

HANDS-ON LEARNING





21st CENTURY LEARNING VISIBILITY FOSTERS COLLABORATION





21st CENTURY LEARNING

CAREER & TECHNICAL EDUCATION (CTE)





21st CENTURY LEARNING

FINE ARTS | MUSIC

Considerations:

- Variety of Acoustics
- Variety of Storage
- Loading and Transfer
- Common Spaces



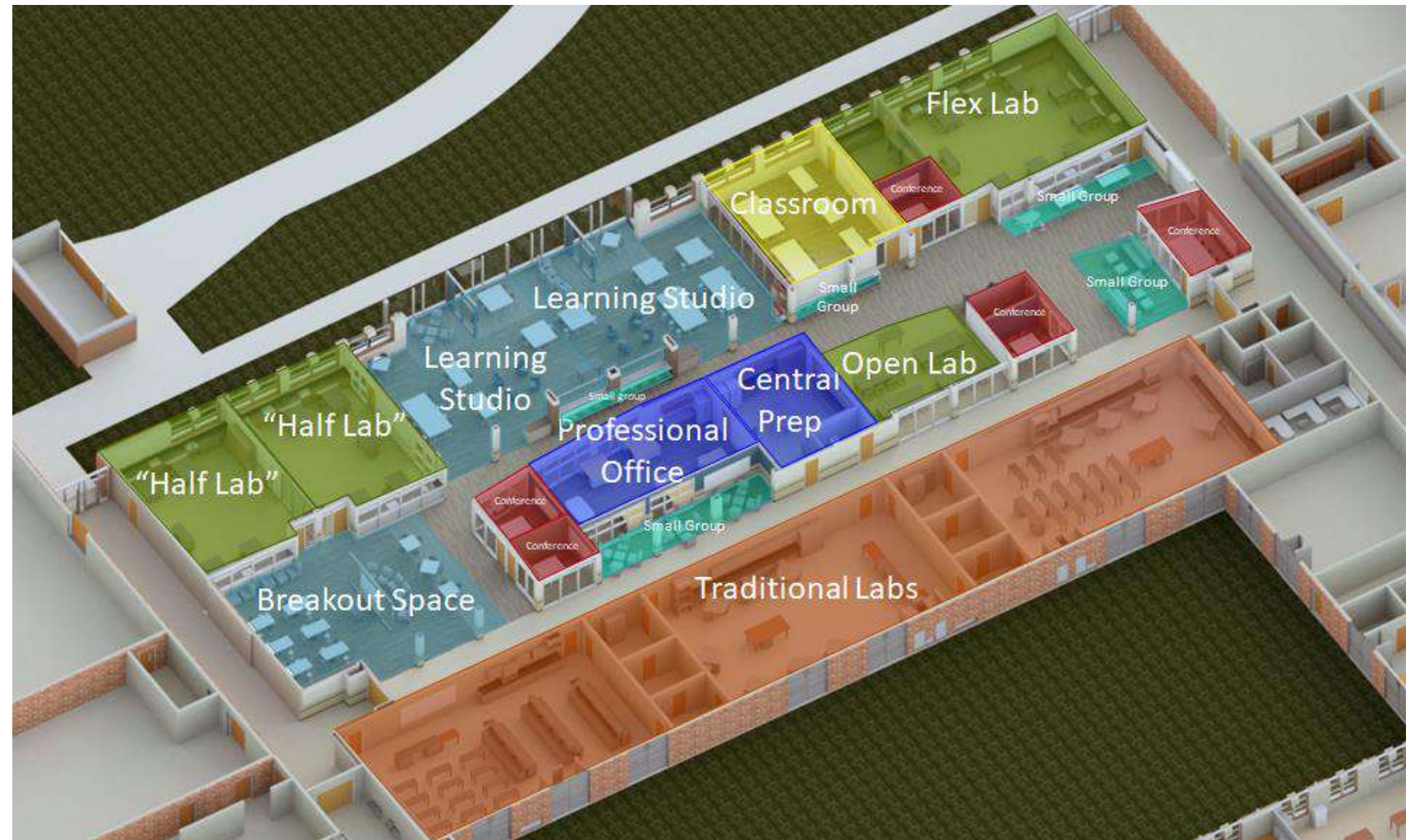


21st CENTURY LEARNING CASE STUDY #1





21st CENTURY LEARNING CASE STUDY #1



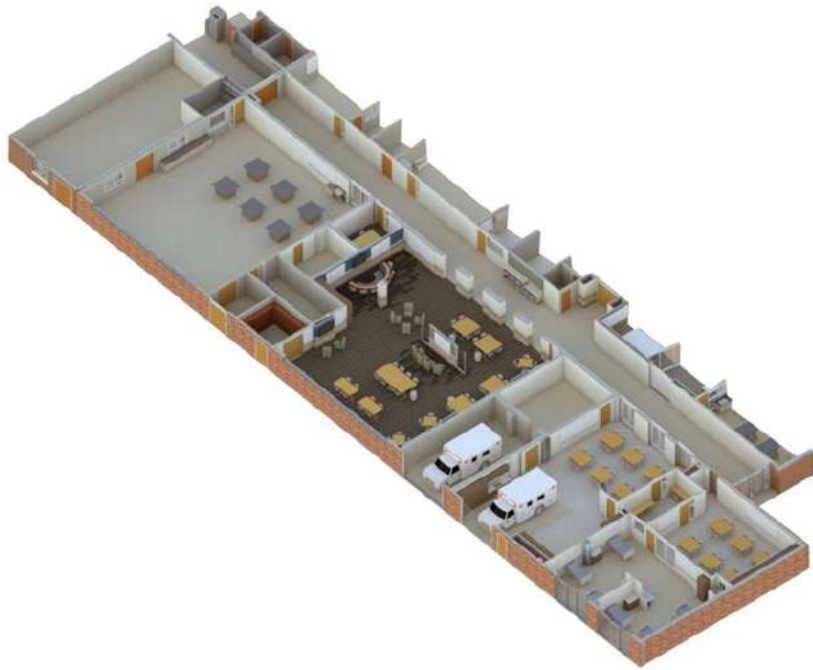


21st CENTURY LEARNING CASE STUDY #1



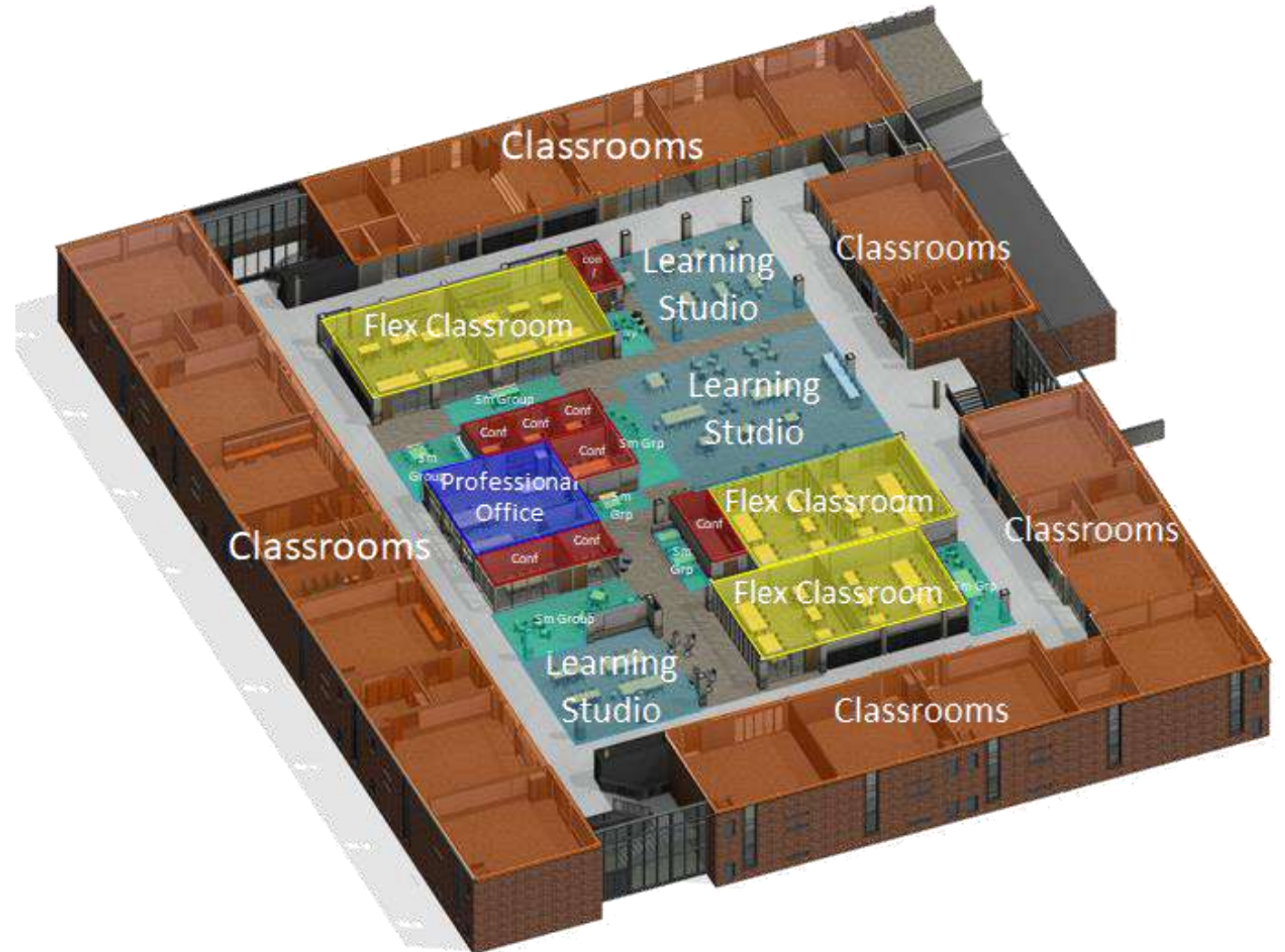
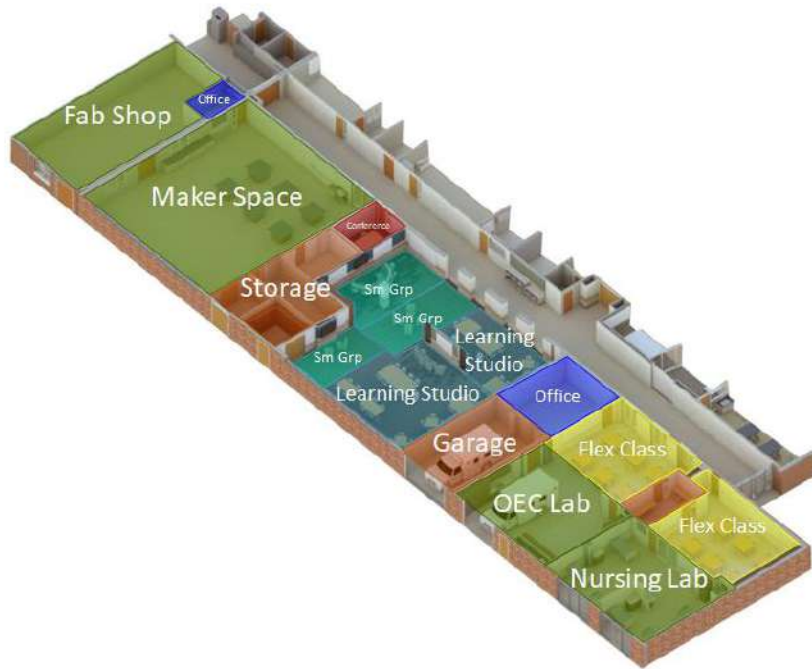


21st CENTURY LEARNING CASE STUDY #1





21st CENTURY LEARNING CASE STUDY #1





21st CENTURY LEARNING CASE STUDY #1





21st CENTURY LEARNING CASE STUDY #1





21st CENTURY LEARNING CASE STUDY #1



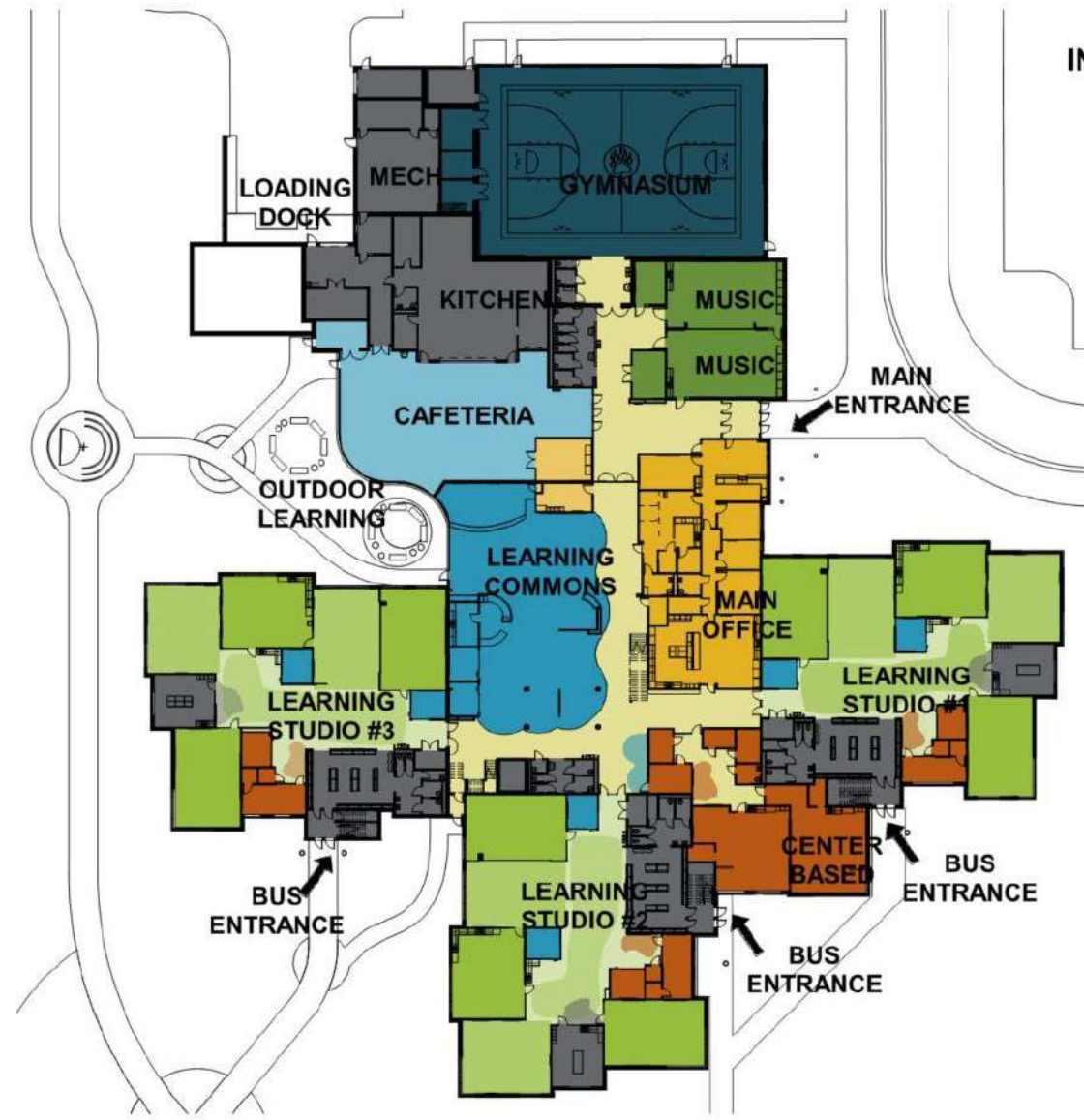


21st CENTURY LEARNING CASE STUDY #1



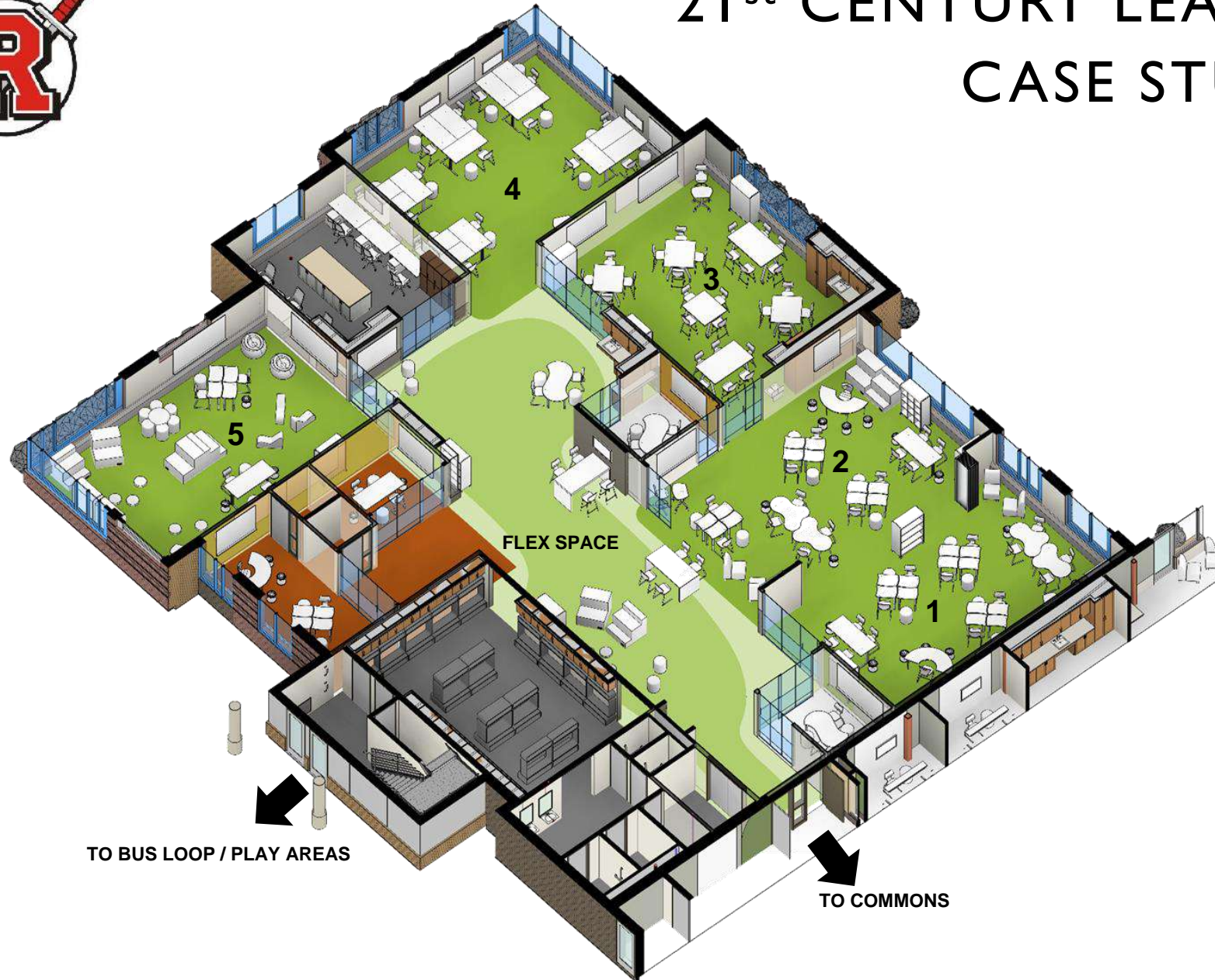


21st CENTURY LEARNING CASE STUDY #2





21st CENTURY LEARNING CASE STUDY #2



TO BUS LOOP / PLAY AREAS

TO COMMONS



21st CENTURY LEARNING CASE STUDY #2



Learning Studio Flex Area



21st CENTURY LEARNING CASE STUDY #2



Learning Studio Flex Area



Career and Technical Education

Wold



CAREER & TECHNICAL EDUCATION



ROCORI

ISD 750 EST.1967

VISION 2025

Making a Difference Today for a Better Tomorrow

INCLUSIVE

A welcoming culture for all



BALANCED

Dedicated to overall wellness,
and strong academics



EQUITABLE

Focused on equity for all



CURIOUS

Cultivating curiosity and
contributions

CONNECTED

Building relationships, pride,
and community

PROGRESSIVE

Using a progressive mindset
and effective planning

Priorities

Build programming and opportunities that enhance and support **ROCORI** students' academic, social, emotional, and mental health education.

Develop **ROCORI** proud character and tradition by equipping students with successful life long soft skills and citizen traits

Foster community based relationships to strengthen **ROCORI** programming and opportunities

WWW.ROCORI.K12.MN.US



CAREER & TECHNICAL EDUCATION

PENDULUM SWING

A shift is happening. Students are being encouraged to set a post-secondary plan best suited to their interests.

Why CTE is an option schools should consider for students:

- Demand for craft skills workers is increasing

Benefits of CTE

- Higher Graduation Rates
- Soft Skills training
- Hands on learning
- Increase Career Exploration



CAREER & TECHNICAL EDUCATION

CURRENT PROGRAMMING

- Creative with the spaces we have.
- Spaces are crowded and not conducive to being multifunctional.
- No further room for growth.
- Programming is based on past practice not best practice.
- Safety is a concern



CAREER & TECHNICAL EDUCATION

WOOD SHOP





CAREER & TECHNICAL EDUCATION

STORAGE SPACE





CAREER & TECHNICAL EDUCATION

SMALL ENGINES





CAREER & TECHNICAL EDUCATION

NEED FOR MULTIPURPOSE SPACES

- Spaces that allow us to be flexible in our programming.
- Centralized areas that allow for instruction and creation.
- Spaces that help us create 21st Century Learning:
 - Robotics
 - Computer Coding
 - Video Production



CAREER & TECHNICAL EDUCATION

Broadcast / ITV:

Livestream in-house.
Production of Student News Shows
Podcasting
Content Creation for websites, tv
announcements and scoreboards.

Agriculture

Barn that houses animals
Greenhouse that allows us to
produce food
School Forest: Tree's / Orchard
Companion Animals: i.e. boarding
school for dogs.

Hospitality / FACS

Revamp kitchen to stainless steel
(industry standard)
Child Development courses
Interior Design Courses
Education Courses
Student Run Restaurant / Food Truck
Child Care center (community
education)

Other Areas

Robotics Spaces
Computer Coding
Automotive



CAREER & TECHNICAL EDUCATION

EXPAND PARTNERSHIPS

Current Partnerships:

Discovery Academy-COLDSRING/SCTCC

Certified Nursing Assistant-Assumption/SCTCC

Cold Spring Bakery-18-21 Program

Habitat-Construction

Where next?

Robotics

Welding

Automotive

Marine

Engineering

Apprenticeships/Work Experience



Music and Fine Arts

Wold



MUSIC AND FINE ARTS



ROCORI

ISD 750 EST.1967

VISION 2025

Making a Difference Today for a Better Tomorrow

INCLUSIVE

A welcoming culture for all



BALANCED

Dedicated to overall wellness,
and strong academics



EQUITABLE

Focused on equity for all



CURIOUS

Cultivating curiosity and
contributions

CONNECTED

Building relationships, pride,
and community

PROGRESSIVE

Using a progressive mindset
and effective planning

Priorities

Build programming and opportunities that enhance and support **ROCORI** students' academic, social, emotional, and mental health education.

Develop **ROCORI** proud character and tradition by equipping students with successful life long soft skills and citizen traits

Foster community based relationships to strengthen **ROCORI** programming and opportunities

WWW.ROCORI.K12.MN.US



MUSIC AND FINE ARTS

MUSIC IN 1989

- 2 High School bands
- 2 High School choirs
- General Music K-8
- 5th and 6th Band
- Elementary Choir in 4, 5 and 6
- Drumline show choir.
- 8 music staff District Wide
- Elementary music time
 - CSE – 100 min / week
 - JCE / Rich – 90 min / week





2021 ROCORI MUSIC PROGRAMMING

- 5 staff members across the district.
- Budget cuts / Space Cuts
2009 addition added no space but did add MS music.
3 band rooms to 1 and 2 choir rooms to 1
- 1 High School Band / 1 High School Choir
- No Drumline / No Show Choir / No Elementary Choir



CURRENT SPACE ISSUES

- Secondary Building Space
 - Both rooms every hour of every day. No space for additions
 - No Practice rooms
 - No Soundproofing in music spaces
 - Lack of storage space
 - Storage and rooms not climate controlled
 - Budget needs: Piano's, chairs, etc.
- Elementary Space needs
 - Performance space
 - Space for general music and elementary choir
 - Budget needs: Risers, staffing, etc.



AUDITORIUM

- No Green Room or dressing room areas.
- Scene storage space – not safe
- Outdated shells and desire for new risers
- Added prep space for theatre
- Dedicated Sound / Light area in theatre
- Screen projector that is automated
- Desire to have fly-in sets



ESSENTIAL QUESTIONS

Have we valued Music / Fine Arts with our budgets and buildings?

What type of music and theatre program do we want to have in ROCORI?

How do we develop spaces that can best support our music and theatre, be utilized circularly at all levels for 21st century learning, and be a source of community pride?



OTHER?



- **Next Meetings:**

- » **Meeting #4:** Monday, November 29, 2021
- » **Meeting #5:** Thursday, December 16, 2021
- » **Meeting #6:** Wednesday, January 5, 2022
- » **Meeting #7** (if needed): Tuesday, January 18, 2022