



2021 Target Building Capacity/Utilization Plans





TABLE OF CONTENTS

| | |
|----|--------------------------------|
| 1 | COVER PAGE |
| 2 | TABLE OF CONTENTS |
| 3 | SUMMARY |
| 4 | DEFINING BUILDING CAPACITY |
| 5 | EXAMPLE CAPACITY EXERCISE |
| 6 | EXAMPLE CAPACITY EXERCISE |
| 7 | ASSUMPTIONS |
| 8 | ELEMENTARY SCHOOLS COVER PAGE |
| 9 | JOHN CLARK ELEMENTARY |
| 10 | COLD SPRING ELEMENTARY |
| 11 | RICHMOND ELEMENTARY |
| 12 | SECONDARY SCHOOLS COVER PAGE |
| 13 | ROCORI SECONDARY - MAIN LEVEL |
| 14 | ROCORI SECONDARY - LOWER LEVEL |
| 15 | ROCORI SECONDARY - UPPER LEVEL |
| 16 | ROCORI SECONDARY - ALC |



Summary of Target Capacity

Elementary Schools

| | <u>Target Capacity</u> | <u>2021/22 Enrollment</u> |
|--|-------------------------------|----------------------------------|
| John Clark | 134 Students | 138 Students |
| Cold Spring | 597 Students | 569 Students |
| Richmond | 134 Students | 131 Students |
| TOTAL ELEMENTARY TARGET CAPACITY: | 865 Students | 838 Students |

Secondary

| | | |
|---|-----------------------|-----------------------|
| ROCORI Middle School | 598 Students | 586 Students |
| ROCORI High School | 936 Students | 917 Students |
| TOTAL SECONDARY TARGET CAPACITY: | 1,534 Students | 1,503 Students |



CAPACITY OVERVIEW

Contrary to popular opinion, school buildings do not have a fixed capacity. In fact, they have a capacity based upon how an organization chooses to allocate use of space. Space is allocated for computer labs, special education or other support functions, and this technically reduces the number of spaces (classrooms) available for capacity.

Typical practice for School Districts is to assign use of space in preparation for each upcoming school year. Therefore each year we can calculate capacity, and each year the capacity may change. This allocation of space dictates what spaces are available to provide capacity.

What follows is a methodology for determining capacities for your Elementary and Secondary School buildings.

- Actual capacity diagrams are included in this report. Each school has a "Target Capacity."
- The following pages describe the capacity calculation methodology, and assumptions as developed with your administrators.
- Typically cannot count more than 1 (one) gym station per 500 students.
- Typically cannot count more teaching stations than there are FTE of instructors for a given specialty (i.e. Industrial Technology, Music).
- Count only computer labs that are scheduled.



CAPACITY CALCULATION: SAMPLE EXERCISE

KINDERGARTEN FULL DAY CAPACITY

2 Classrooms x 19 Students/Classroom = 38 Student Capacity

| | |
|---------------------------|---------------------------|
| KINDERGARTEN K | KINDERGARTEN K |
|---------------------------|---------------------------|

ELEMENTARY CAPACITY

2 Classrooms x 23 Students/Classroom = 46 Student Capacity

| | | | |
|------------|--------------|-----------------------|-----------------------|
| ART | MUSIC | CLASSROOM ● | CLASSROOM ● |
|------------|--------------|-----------------------|-----------------------|

SECONDARY CAPACITY

MIDDLE SCHOOL/HIGH SCHOOL CAPACITY

4 Classrooms x 33 Students/Teaching Station = 132 Students
x 83% Efficiency Factor = 110 Student Capacity

| | | | |
|-----------------|-------------------|-----------------------|-----------------------|
| ART ● | MUSIC ● | CLASSROOM ● | CLASSROOM ● |
|-----------------|-------------------|-----------------------|-----------------------|



CAPACITY CALCULATION: TARGET CAPACITY EXAMPLE

TARGET CAPACITY EXAMPLE: DEFICIENCIES

1 Classrooms x 23 Students/Classroom = 23 Student Capacity

| | | | |
|-----|-------|----|-----------|
| ART | MUSIC | EL | CLASSROOM |
|-----|-------|----|-----------|

This room represents a space taken over to address deficiency for specialty space. Reduces the capacity of the building by one room.

TARGET CAPACITY EXAMPLE: UNDERUTILIZED SPACE

3 Classrooms x 33 Students/Classroom = 99 Student Capacity

| | | | |
|-----|-------|-------------------|-----------|
| ART | MUSIC | FLEX CLASSROOM | CLASSROOM |
|-----|-------|-------------------|-----------|

The hollow dot represents space that is currently underutilized. The hollow dot identifies this room as an additional teaching station thus increasing the capacity of the building by one classroom.



ELEMENTARY SCHOOL ASSUMPTIONS:

A. Class sizes can range from 17-27 students. The actual average number of students per classroom for grades K-5 and will be used for planning purposes.

B. Each building shall have space allotted for the following:

- (1) Intervention
- (1) Speech
- (1) Psych
- (1) Social Worker
- (1) Cultural Liaison
- (1) Art Room
- (1) Music Room
- (1) Media Center
- (1) Gym

SECONDARY SCHOOL ASSUMPTIONS:

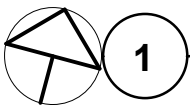
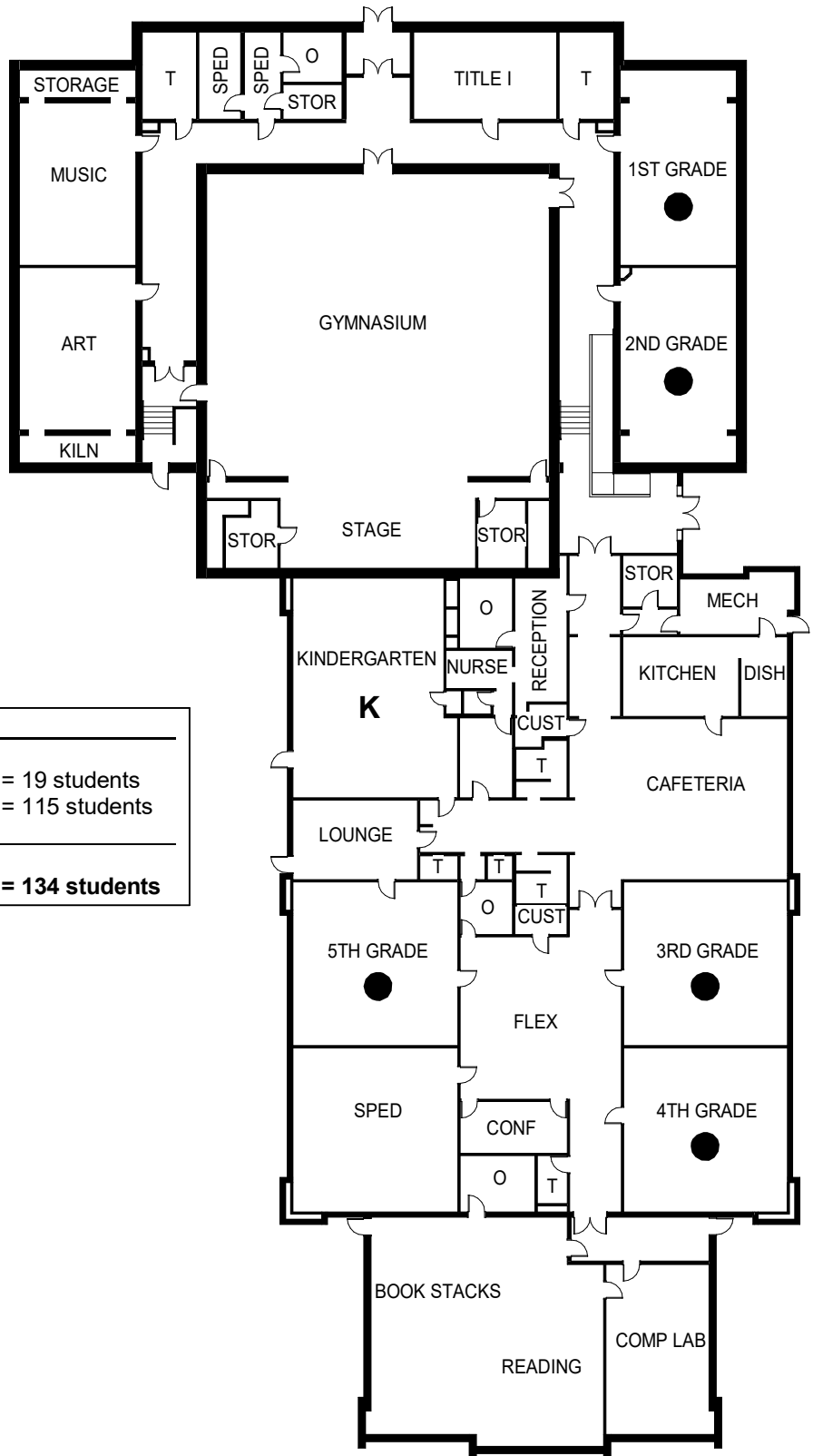
A. Grades 6-12= 32-33 average classroom size

B. Middle Level efficiency is typically around 75-80% before "real pain". Current offerings/schedules should allow for 83% efficiency for potential capacity. This means your Middle school building is used very efficiently today.

C. High School efficiency is typically around 85-90% before "real pain" (eg, teaching math in a gymnasium). Current offerings/schedules should allow for 80% efficiency for potential capacity.



ELEMENTARY SCHOOLS



JOHN CLARK ES MAIN LEVEL 2021/2022 CAPACITY DIAGRAM

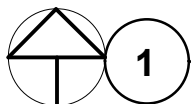
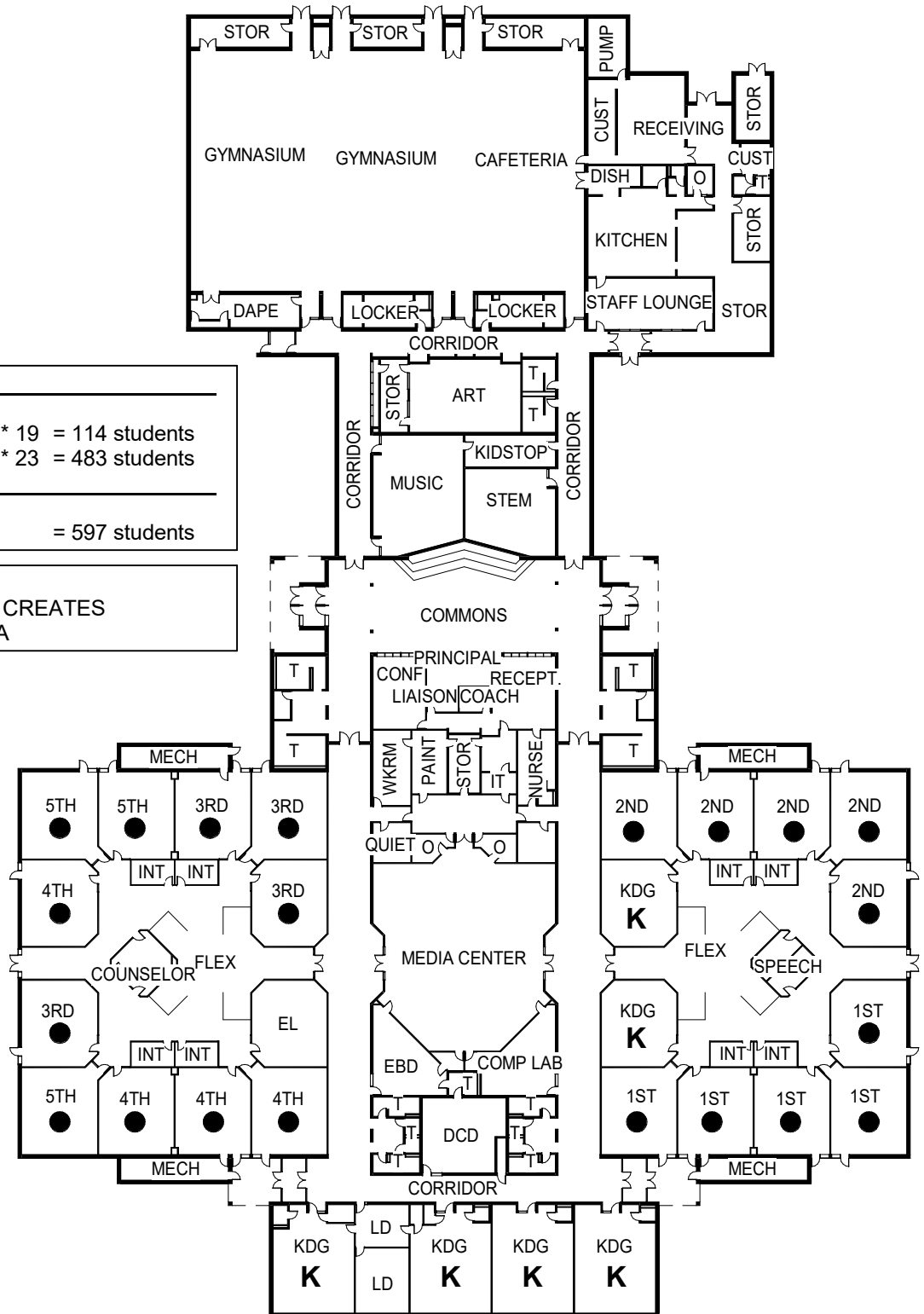
1/32" = 1'-0"

0 24' 48'



ISD #750 - ROCORI PUBLIC SCHOOLS
COLDSPRING ELEMENTARY 2021/2022 CAPACITY DIAGRAMS
October 19, 2021

| TARGET CAPACITY | |
|---|------------------------|
| K Kindergarten | 6 * 19 = 114 students |
| ● Classrooms | 21 * 23 = 483 students |
| 2021 / 2022 Capacity = 597 students | |
| NOTES: - PE/LUNCH SCHEDULING CREATES CONFLICTS AT CAFETERIA | |



COLD SPRING ES MAIN LEVEL 2021/2022 CAPACITY DIAGRAM

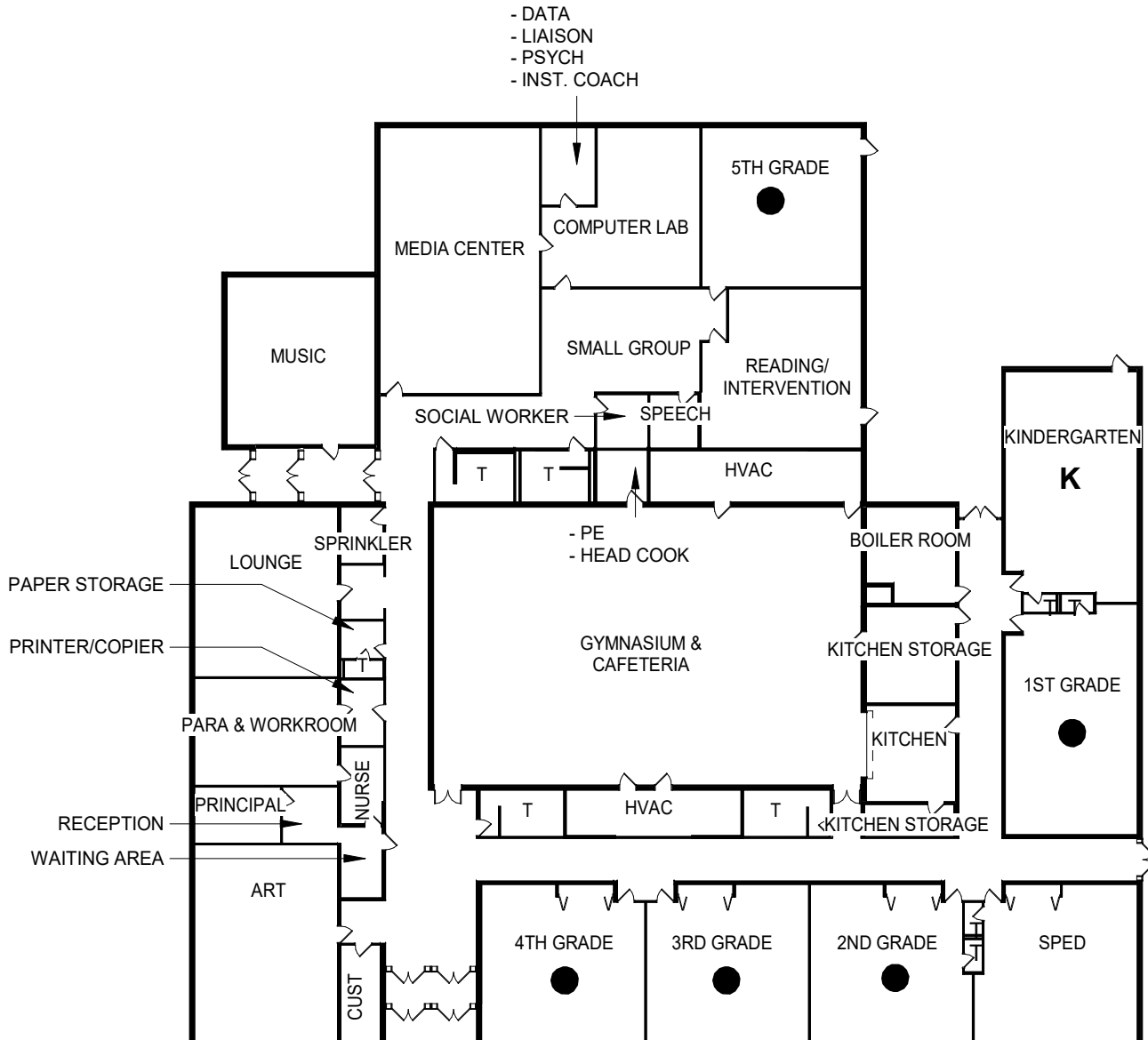
1" = 60'-0"





ISD #750 - ROCORI PUBLIC SCHOOLS
RICHMOND ELEMENTARY 2021/2022 CAPACITY DIAGRAM
October 19, 2021

| TARGET CAPACITY | | |
|---------------------------|-----------------|-----------------------|
| K Kindergarten | 1 * 19 students | = 19 students |
| ● Classrooms | 5 * 23 students | = 115 students |
| 2021/2022 Capacity | | = 134 students |



1

RICHMOND ES MAIN LEVEL 2021/2022 CAPACITY DIAGRAM

1/32" = 1'-0"

0 24' 48'



SECONDARY SCHOOLS



ISD #750 - ROCORI PUBLIC SCHOOLS

ROCORI CAMPUS

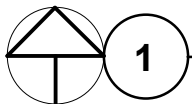
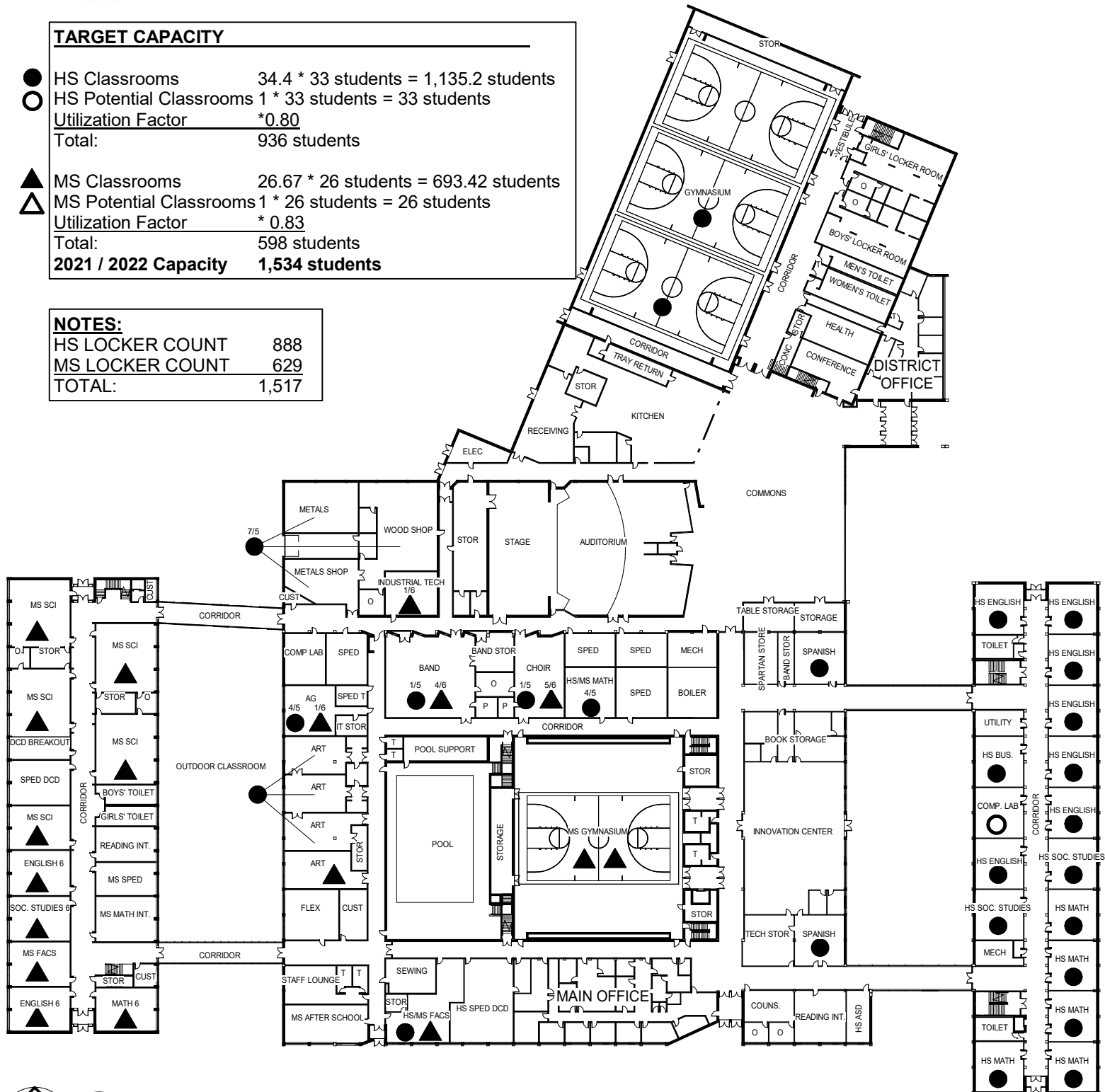
October 19, 2021

TARGET CAPACITY

| | |
|-----------------------------|---------------------------------------|
| ● HS Classrooms | 34.4 * 33 students = 1,135.2 students |
| ○ HS Potential Classrooms | 1 * 33 students = 33 students |
| Utilization Factor | * 0.80 |
| Total: | 936 students |
| ▲ MS Classrooms | 26.67 * 26 students = 693.42 students |
| △ MS Potential Classrooms | 1 * 26 students = 26 students |
| Utilization Factor | * 0.83 |
| Total: | 598 students |
| 2021 / 2022 Capacity | 1,534 students |

NOTES:

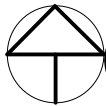
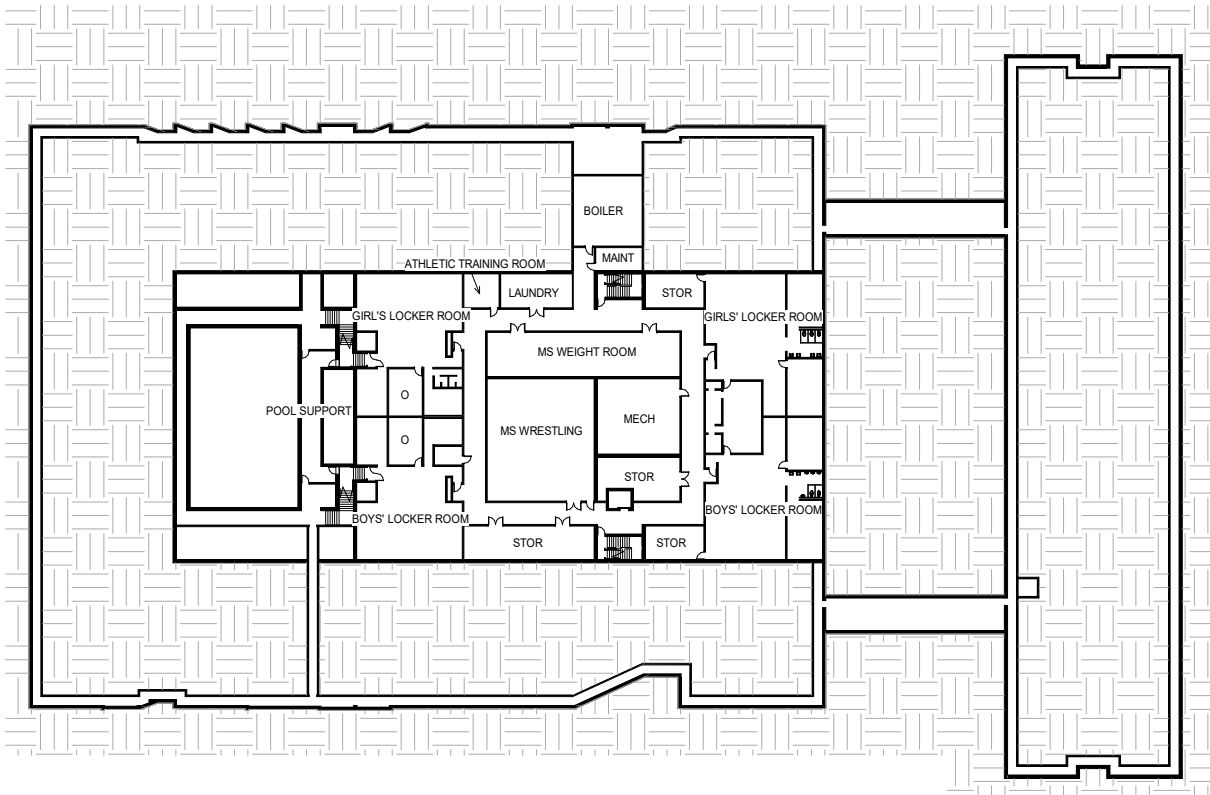
| | |
|-----------------|-------|
| HS LOCKER COUNT | 888 |
| MS LOCKER COUNT | 629 |
| TOTAL: | 1,517 |



ROCORI SECONDARY MAIN LEVEL 2021/2022 CAPACITY DIAGRAM

1" = 80'-0"

0 60' 120'



1

ROCORI SECONDARY LOWER LEVEL 2021/2022 CAPACITY DIAGRAM

1" = 80'-0"

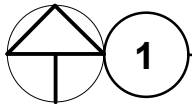
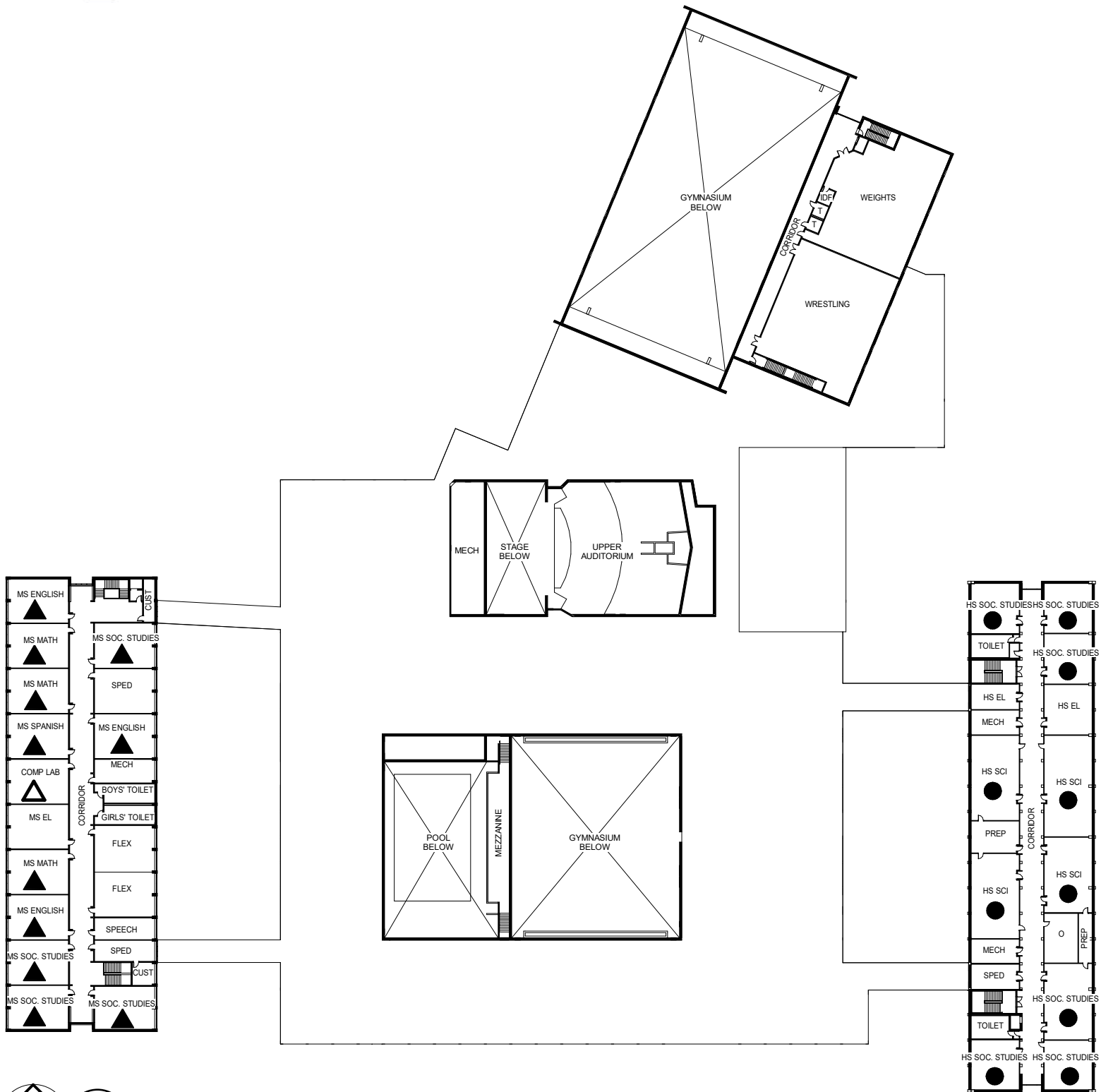
0 60' 120'



ISD #750 - ROCORI PUBLIC SCHOOLS

ROCORI CAMPUS

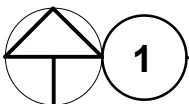
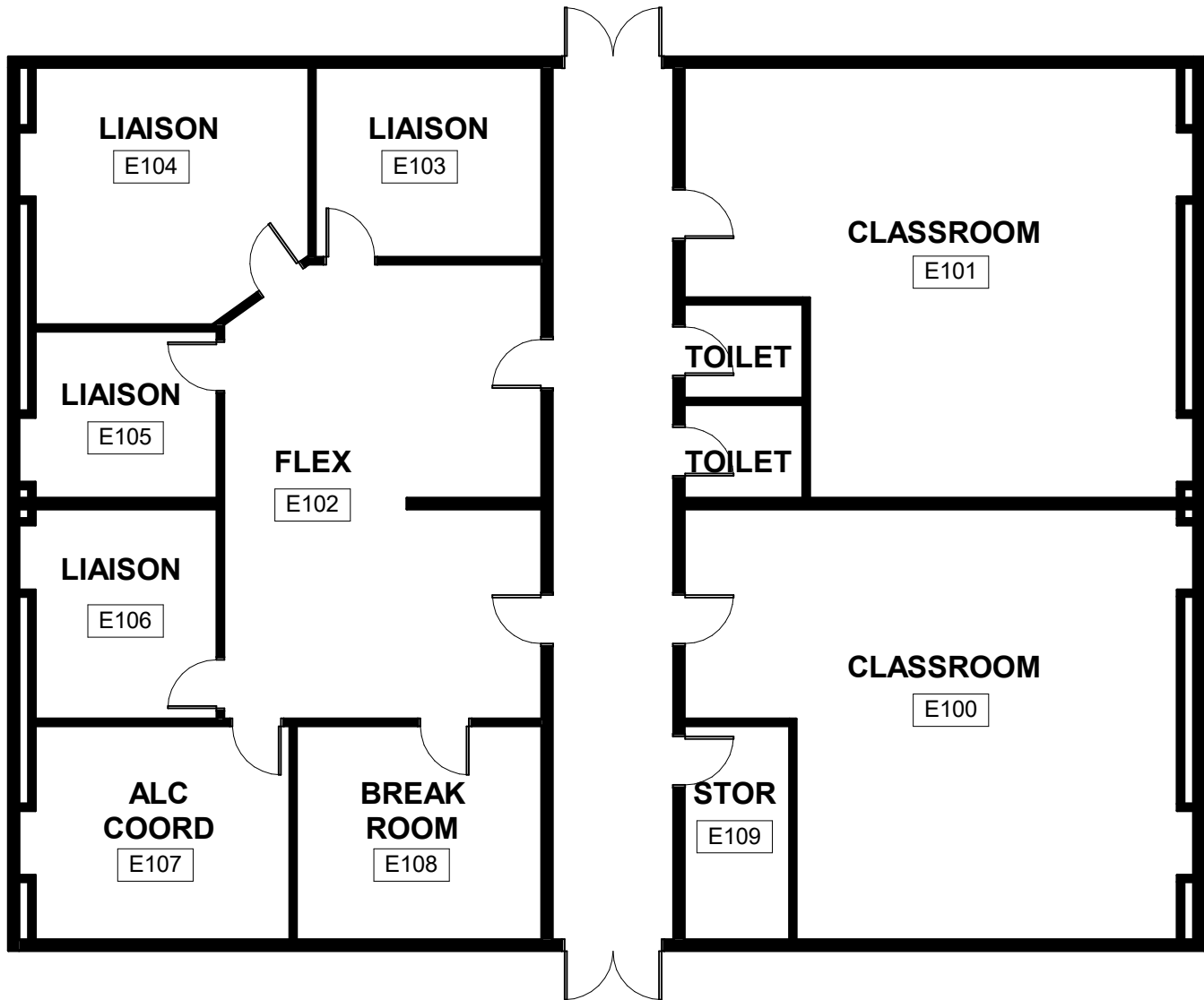
October 19, 2021



ROCORI SECONDARY UPPER LEVEL 2021/2022 CAPACITY DIAGRAM

1" = 80'-0"

0 60' 120'



ROCORI ALC 2021/2022 CAPACITY DIAGRAM

3/32" = 1'-0"

0 8' 16'