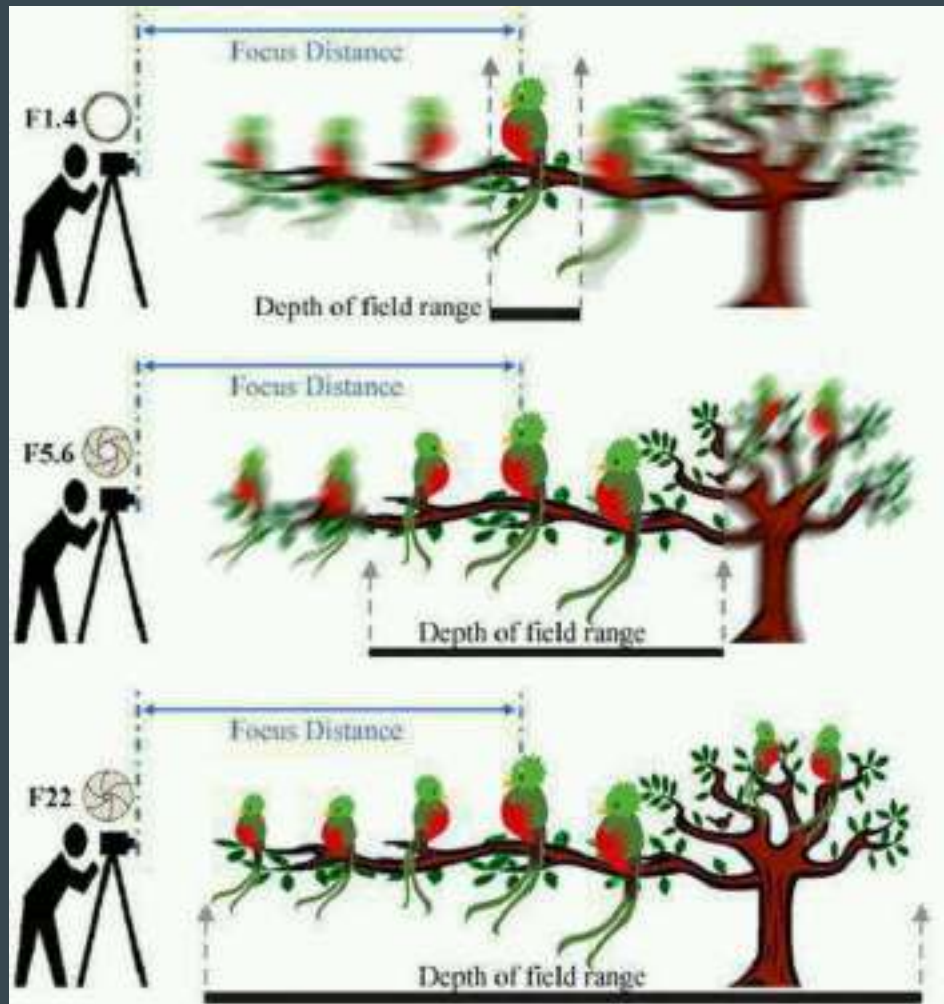


# Iphone Portrait Mode Fails

...

## How a real camera does Shallow Depth of Field



“Portrait mode simulates a shallow depth of field by using edge detection and/or depth mapping to differentiate between the foreground and background. It then blurs the background, simulating that shallow depth of field and making the foreground pop...iPhone X uses depth mapping to figure out what is in the foreground of the image. These smartphones use data from the wide angle and telephoto lenses to create a depth map, and then artificially blur objects depending on how far they are from the in-focus subject.”



















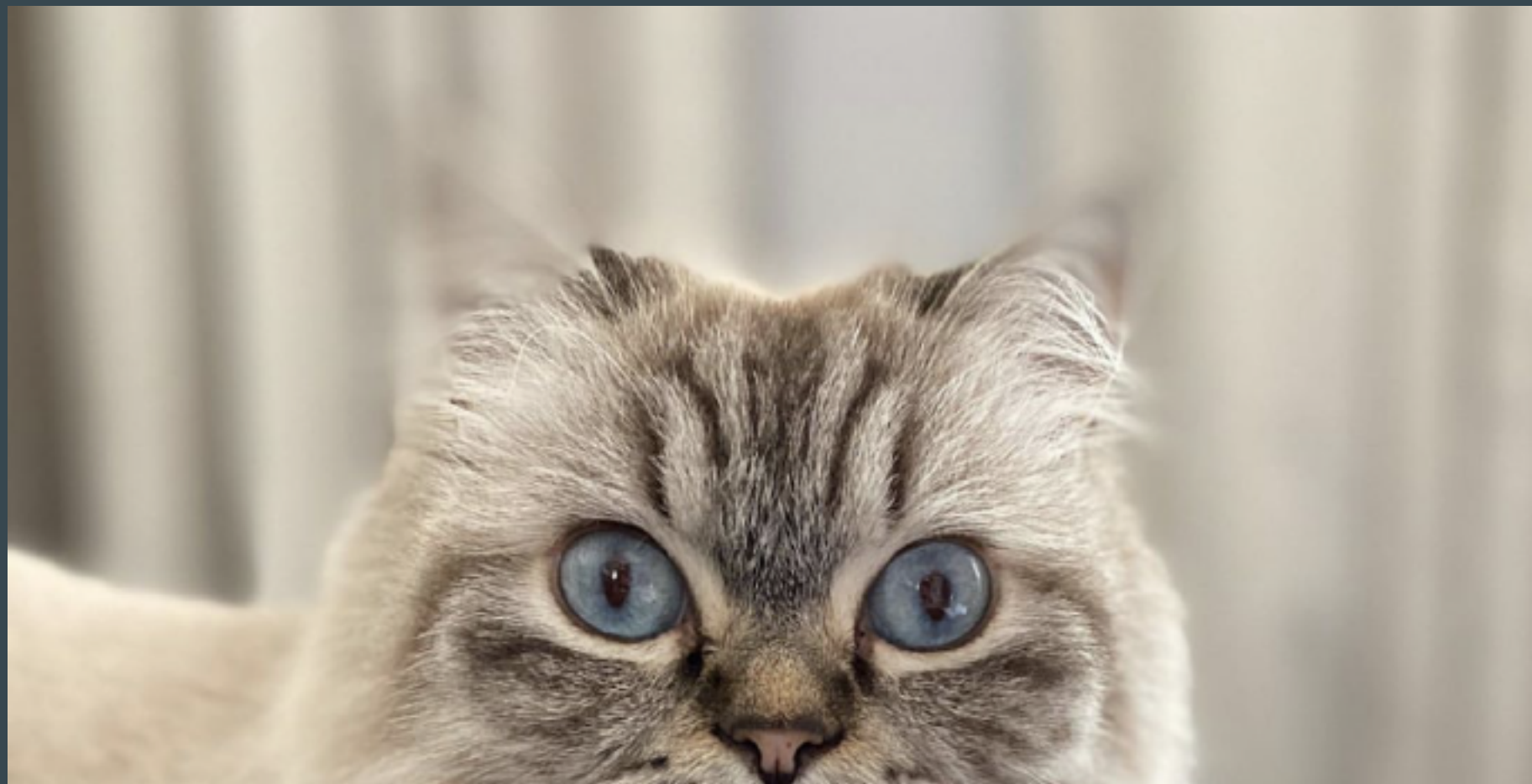






















# This would be hard to do with an iPhone

This is taken with a camera.

See how the eyes are in focus, but the nose in front, and the ears behind are not in focus? That is because it is a very shallow depth of field. The nose and ears are not on the same plane as the eyes (not the same distance from the lens) so they are not in focus.

An iPhone would probably just have the whole face in focus (by finding the edges of the head) and the background out of focus.



