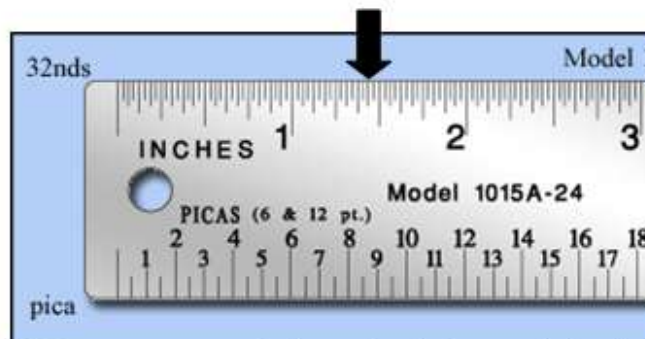


Please set up the equation and show your work. Units are a must for the correct answer. 2pts each.

1. 95.2 mm to inches
2. 7.80 yards to feet
3. 49.5 billion nanoliters to Megaliters
4. A European car manufacturer reports that the fuel efficiency of the new MicroCar is 32.1 km/L highway. What is the equivalent fuel efficiency rates in miles per gal?
5. Using the results from question 4, If gas costs \$2.98 per gal, how much would it cost to drive 1200 miles on the highway in this car (assuming the fuel efficiency rating is accurate)?
- 6.

What is the approximate measurement indicated in the image below? (Closest)

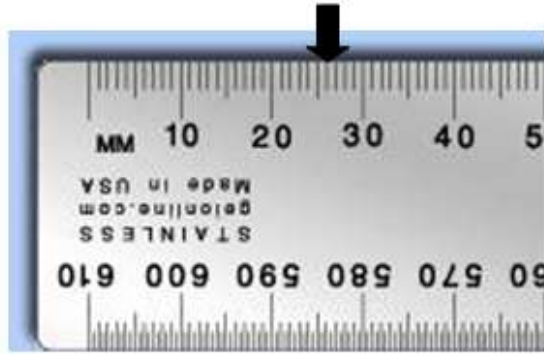
- a. 1.25 in
- b. 1.4375 in
- c. 1.625 in
- d. 1.75 in



7.

What is the approximate measurement indicated in the image below? (Closest)

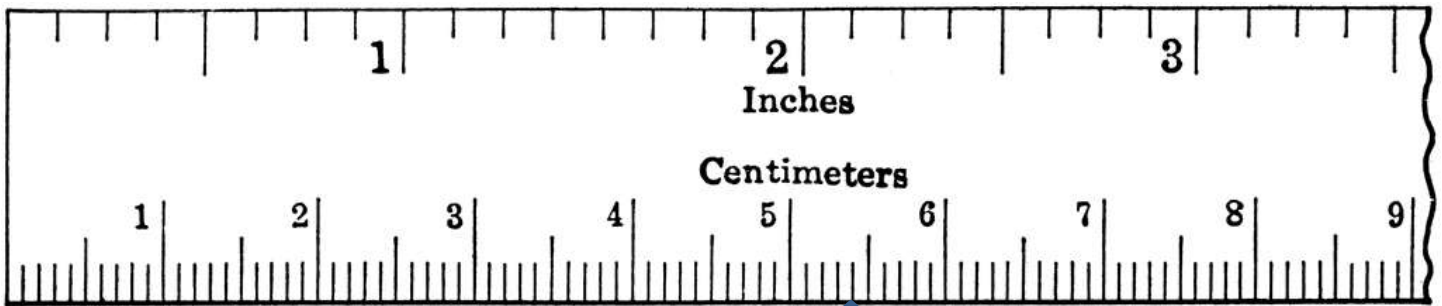
- a. 26 mm
- b. 2.3 cm
- c. 3.6 cm
- d. 19 mm



8.



9.



10.

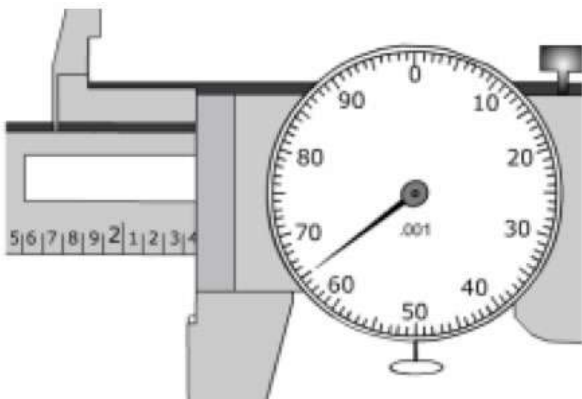


8. _____

9. _____

10. _____

11. Write the exact measurement displayed on the dial caliper below: _____



_____/20