

Name _____

ID at the Scene

Objective: Working alone and utilizing your own resources, solve the case.

Step one: Observe the scene. You may zoom in and scroll as needed.

Step two: Formulate a plan based on visible evidence. Write your ideas here.

Step three: Checkpoint! Go check in for your next step.

CONCLUSION:

A – Blood spatter

How will you identify who this blood came from? Write down your options.

B – Fingerprints

How will you identify who these fingerprints came from?

C – Bullet cartridge

How will you identify where this bullet came from?

D – Broken glass

How was this glass broken?

E – Bottle

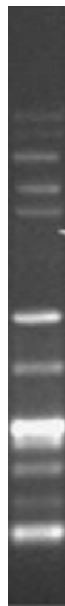
This bottle does not contain forensic evidence. What is your next step?

F – Blood type

You have determined that this blood is AB - What is your next step?

G – ID 1

This matches a person. Their DNA looks like this, what is your next step?



H – Database

You looked in the FBI database for this fingerprint. It did not have a match. What is your next step?

I – 40 mm mag casing

You found a 40 mm magnum casing on the floor. There are people with these firearms. Their guns are registered with these serial numbers:

VD081174

VD773017

What is your next step?

J – VD081174

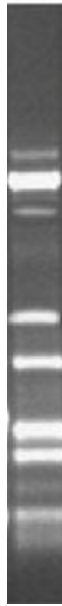
This gun belongs to a person. What is your next step?

K – VD773017

This gun belongs to a person. What is your next step?

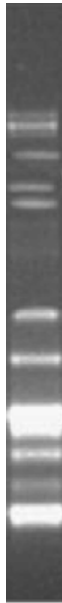
L – ID 2

This person's DNA looks like this. What is your next step?



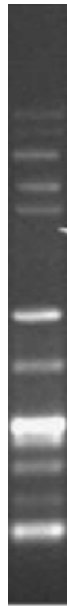
M – ID 3

This person's DNA looks like this. What is your next step?



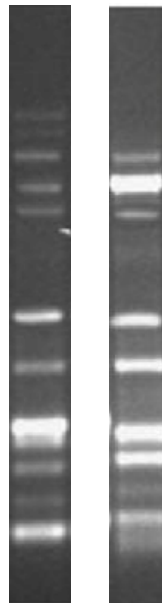
N – Coroner report

Victim DNA looks like this. There is evidence of sexual assault. What is your next step?



O – Rape kit

The DNA found in the kit looks like this. What is your next step?



P – Person 1

The blood type of person 1 is AB - What is your next step?

Q – Person 2

The blood type of person 2 is O - What is your next step?

R – Person 3

The blood type of person 3 is B + What is your next step?

S – Gun 1

This belongs to person 1. What is your next step?

T – Gun 2

This belongs to person 2. What is your next step?