

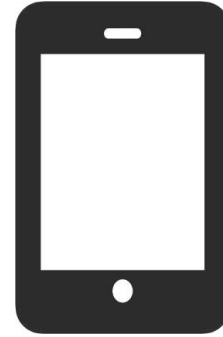
How to join a class in Google Classroom

Instructions for students

Student Instructions



**Regular computer or
Chromebook:**
go to Slide 3



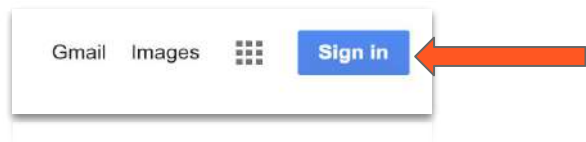
Mobile device:
go to Slide 10

Regular computer or Chromebook



Student Instructions | Computer or Chromebook

On a regular computer:



Open Chrome. Go to Google.com and sign in to your school Google account.

If you are signed into a personal Google account, it won't work.

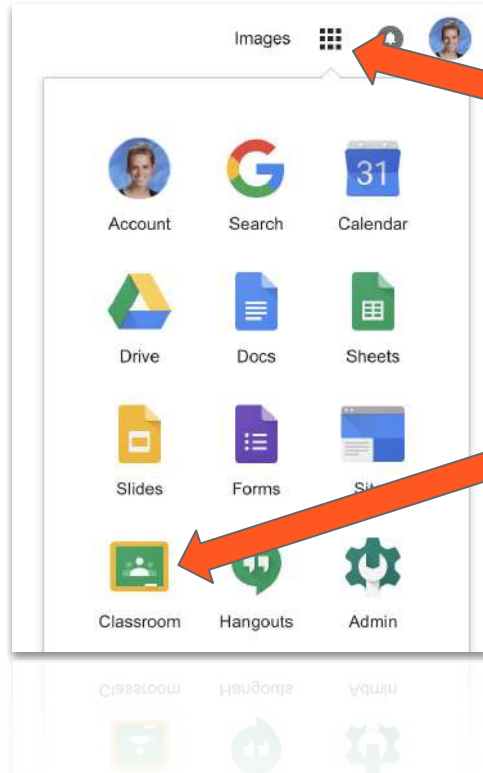
Skyward username@lscs.co

Skyward PASSWORD

On a school Chromebook:

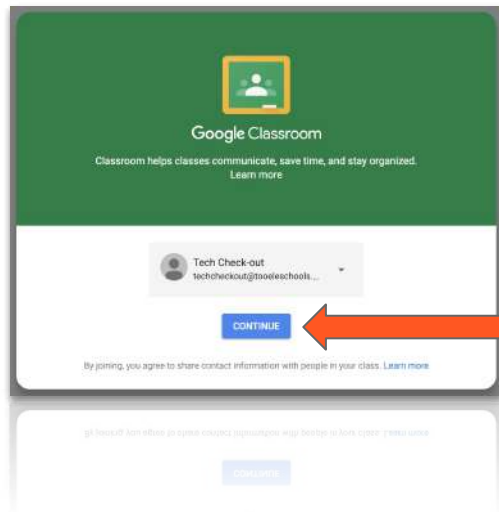
Open Chrome. (You will already be signed in to your Google account.)

Student Instructions | Computer or Chromebook



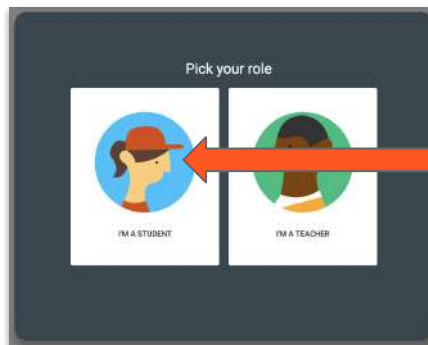
Click the waffle, then
click **"Classroom."**

Student Instructions | Computer or Chromebook



Click
Continue.

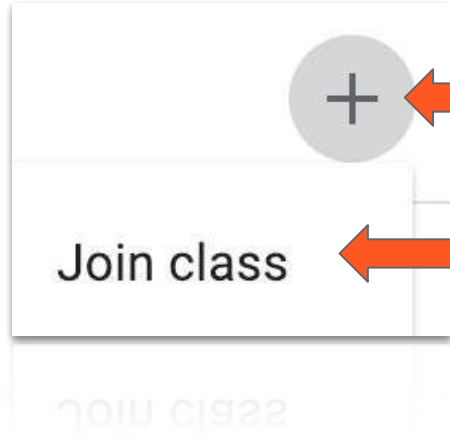
If you've used
Google Classroom in
the past, you won't
see these windows.



Click **"I'M A
STUDENT."**

(If you are a
teacher, click **"I'M A
TEACHER."**)

Student Instructions | Computer or Chromebook



Click the **plus sign** in the top right corner of the page.

Then click **“Join Class.”**

Student Instructions | Computer or Chromebook

Type in the code that your teacher gave you.

Student Instructions | Computer or Chromebook

If you're **having trouble signing in**, try these three things:

1. The most likely problem is **typing the code incorrectly**. You might try having someone else try typing it.
2. Make sure that you are **signed in to your Edison Google account**, not a personal account.
3. If you are still unable to join your class using the code your teacher gave you, you might want to ask your teacher to **resend** or **reset the code**.

Mobile Devices

(smartphones or tablets)



Student Instructions | Mobile Devices

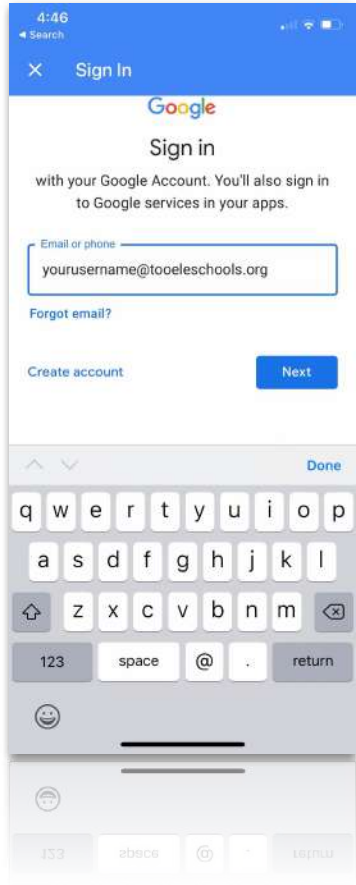


Download the Google Classroom app.

Open the app, and **tap "GET STARTED."**



Student Instructions | Mobile Devices

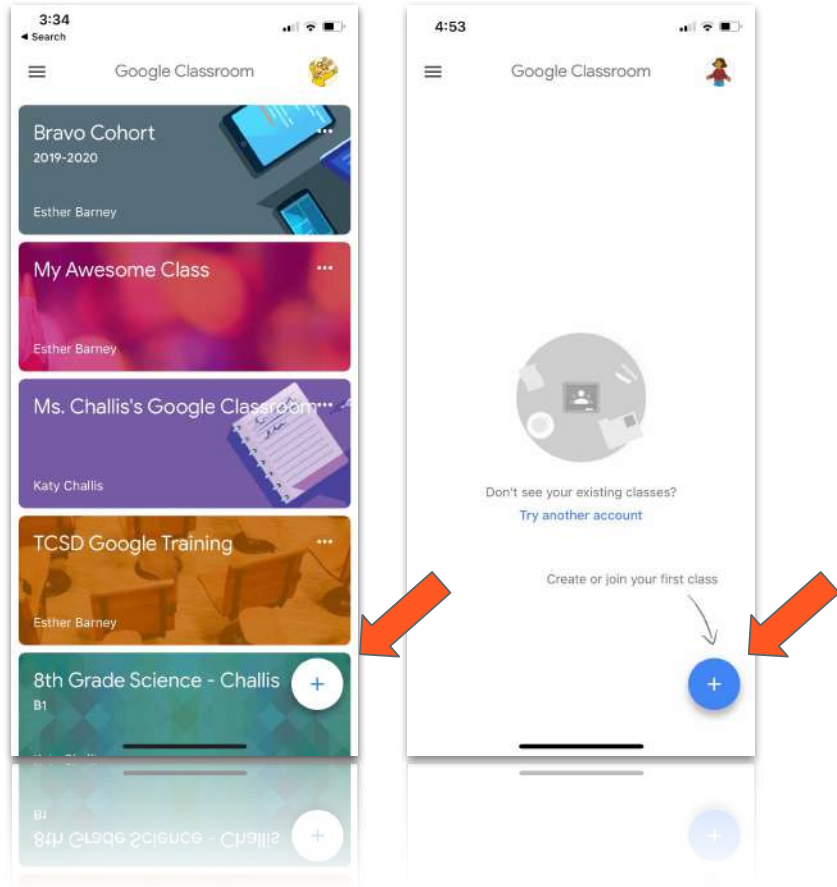


Enter your **Google account username**. Make sure to spell **YOUR SKYWARD USERNAME@lscs.co** correctly. On the next page enter your **Skyward password**.

You may have already used this account in school, either to sign in to your Google account on a web browser or to sign in to a Chromebook.

If you don't know your username and password, contact your teacher or your school secretary.

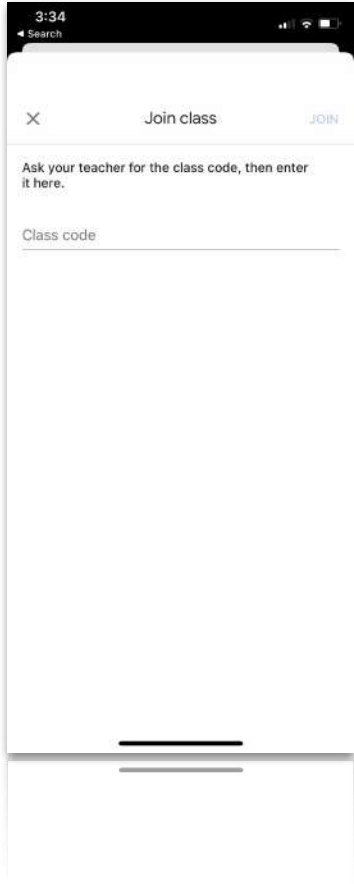
Student Instructions | Mobile Devices



Now you'll see the classes you've already joined. If you've never used Google Classroom, your screen will probably be empty.

Click the plus button in the bottom corner.

Student Instructions | Mobile Devices



Type in the code that your teacher gave you,
then tap “JOIN.”

Student Instructions | Computer or Chromebook

If you're **having trouble signing in**, try these three things:

1. The most likely problem is **typing the code incorrectly**. You might try having someone else try typing it.
2. Make sure that you are **signed in to your Edison Google account**, not a personal account.
3. If you are still unable to join your class using the code your teacher gave you, you might want to ask your teacher to **resend** or **reset the code**.