



HILLSBORO ONLINE ACADEMY TEACHING & EDUCATION

INSTRUCTOR:

CHERYL BURNOR

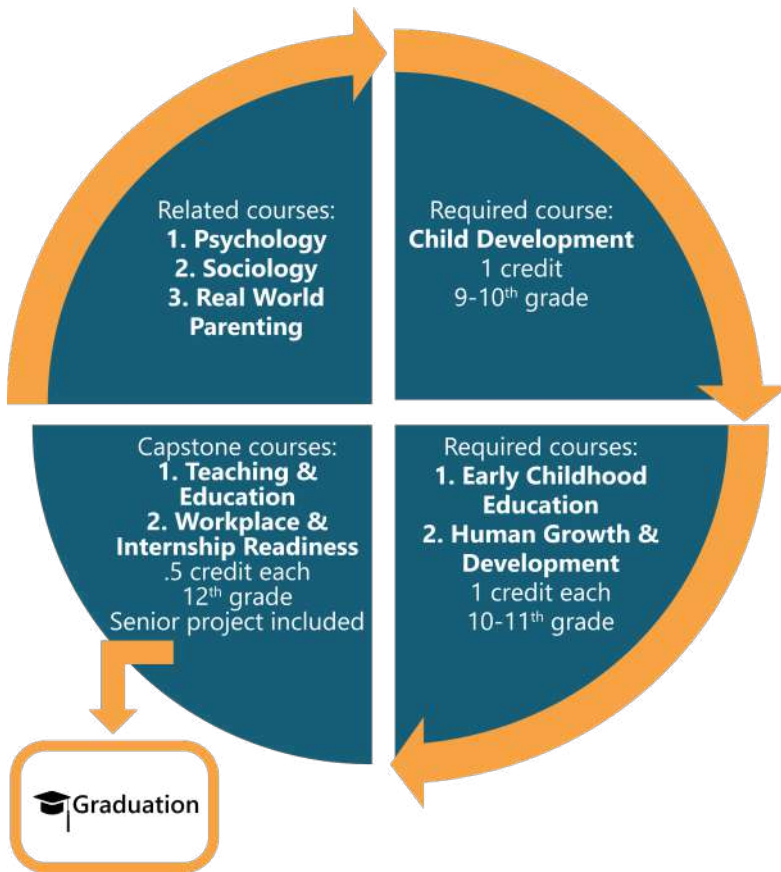
burnorc@hsd.k12.or.us

For students interested in:

- Post-secondary education
- Elementary education
- Speech therapy
- Social work
- Pediatrics
- Coaching

SEQUENCE OF COURSES

Please refer to HSD course catalog for more information



PATHWAY TEACHES

STUDENTS TO:

- Create developmentally appropriate lesson plans
- Prepare meaningful activities
- Observe and reflect on children's learning and development
- Professionally engage children in meaningful play
- Use positive and responsive guidance strategies
- Identify and understand developmental domains
- Work in a team
- Manage and organize multiple responsibilities

CAREER POSSIBILITIES & SALARY RANGES

• Preschool Director	\$36,285- \$45,677
• CTE Teacher	\$39,998- \$168,834
• Licensed Teacher	\$47,907- \$93,901
• Family Social Worker	\$40,851- \$86,611
• Pediatrician	\$135,429- \$238,472
• Counselor– Art/Music Therapist	\$77,126- \$160,763
• Speech & Language Pathologist	\$61,797- \$126,277

**Salary ranges shown are from the 10th to 90th percentile*

SOME LOCAL COLLEGES & MAJORS

- **PCC**– Associates of Applied Science: Educator or Family and Human Services, Career Pathway Certificate: Early Childhood Education or CTE Educator
- **OSU**– Bachelors of Art: Education
- **PSU**– Bachelors of Art: Social Work or Speech Communication
- **WOU**– Bachelors of Science: Education
- **SOU**– Bachelors of Science: Elementary Education

POTENTIAL LOCAL EMPLOYERS

- **Hillsboro School District**
- **NW Regional ESD**
- **Oregon Childhood Development Coalition**
- **Creative Children's Center**
- **Pacific University**
- **Portland Community College**

PROFESSIONAL ORGANIZATIONS TO JOIN

- **NAEYC**
- **ORAEYC**

To learn more about career and college opportunities, make an appointment with your counselor 503-844-1050