

HANOVER CENTRAL HIGH SCHOOL

Hanover Community School Corporation

PROGRAM & DESIGN PRESENTATION



PREPARED BY:
GIBRALTAR DESIGN

SUBMITTED TO:
Mrs. Mary Tracy-MacAulay
Superintendent of HCSC
February 23, 2021

Table of Contents

SECTION I. Introduction & Summary of Report Contents	Page 3
SECTION II. Observations of 21st Century Learning.....	Page 4
SECTION III. Design Executive Summary.....	Page 5
A. Overall Site Plan	
B. Site Master Plan	
C. Overall Building Plan	
SECTION IV. Learning Environment Concepts & Opportunities.....	Page 10
A. CTE & STEM Improvements	
B. Science Improvements	
C. Performing Arts Improvements	
D. New Centralized Office & Student Commons	
E. New Early Childhood Center	
SECTION V. Design Visualization.....	Page 17
A. Exterior Design Concepts	

SECTION I. Introduction & Summary of Report Contents

Gibraltar Design is pleased to present this report to the Hanover Community School Corporation. This document provides the final design intent and relevant information compiled through the efforts of the HCSC Administrative & Facility Teams, building Principals, Gibraltar Design and The Skillman Corporation.

This High School Report and information is specifically a result of the following:

- ☐ Building and Site Assessments
- ☐ Educational focus on Learning Environments for students and teachers
- ☐ Collaboration and direction from the HCSC Administrative Team
- ☐ Input and confirmation of design with building Principals
- ☐ Numerous meetings between Gibraltar Design, The Skillman Corporation, and HCSC Leadership in order to consider site and constructability, construction schedule, and ongoing quality control

We are confident this report represents the culmination of consensus optimizing flexible and engaging new school learning environments for the school district and, specifically, Hanover Central High School.

Gibraltar Design's goal is the same as that of the Administrative Leadership:

The goal of the "new" Hanover Central High School is to provide the Hanover students with the best educational environment for enhanced learning, opportunity, and achievement.

Respectfully submitted,

GIBRALTAR DESIGN

SECTION II. Observations of 21st Century Learning

LEARNING LEADER

A High School supports Learning Leaders who:

- ☐ Are able to demonstrate that they are lifelong learners
- ☐ Understand the importance of an agile classroom
- ☐ Utilize an agile classroom to adjust to varied learning needs and instructional best practices
- ☐ Utilize an agile classroom to adjust to different instructional delivery strategies learned through professional development
- ☐ Develops critical thinkers and encourages digital literacy
- ☐ Create a learning environment that connects and inspires all learners

HIGH SCHOOL LEARNER

A High School supports Learners who:

- ☐ Are less reliant on textbooks, paper, pencils, and can demonstrate understanding on a variety of platforms
- ☐ Engage via one-to-one learning with personal learning devices, digital tools, online communities, and digital content
- ☐ Are motivated by exploration, inquiry, making connections, and real-world application
- ☐ Are able to learn socially, create, and collaborate with peers on joint projects
- ☐ Need differentiated instructional strategies to connect with content and skill
- ☐ Need to continue preparing for College and Career readiness, which culminates at the high school level



SECTION III. Design Executive Summary

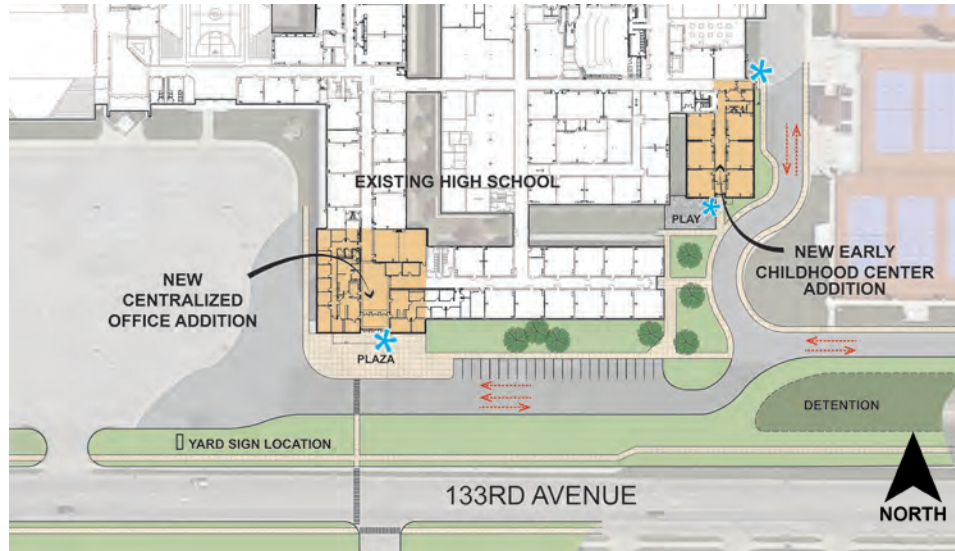
SECTION III. Design Executive Summary

OVERALL SITE PLAN



SECTION III. Design Executive Summary

SITE MASTER PLAN



Considerations

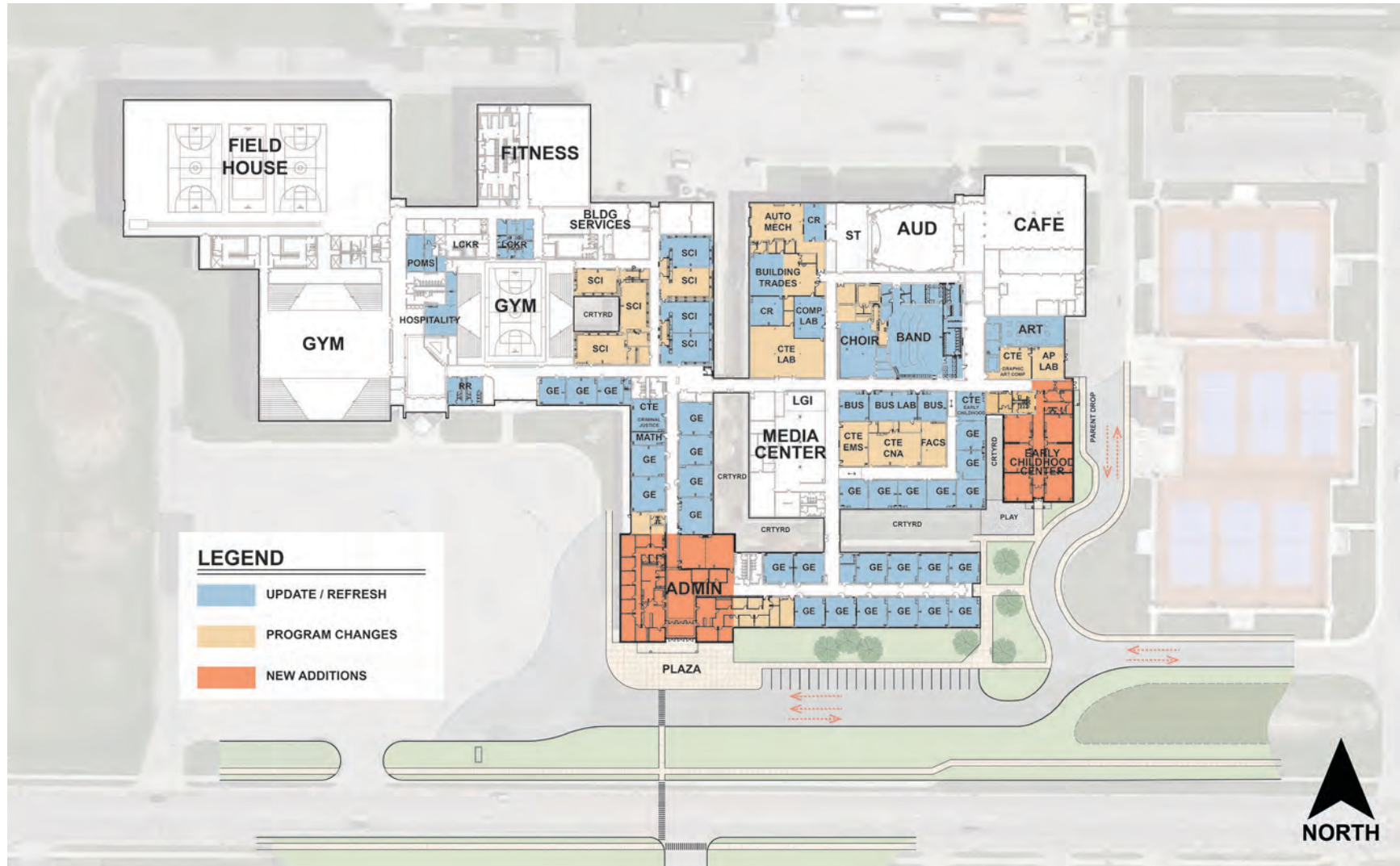
- ☐ New Main Entrance oriented to 133rd Avenue
- ☐ New south drive "pulled" away from Main Entrance
- ☐ Visitor parking located between Main Entrance and driveway
- ☐ New Plaza for student drop and pickup
- ☐ New Early Childhood Center Addition
- ☐ Storm water management improvements

SITE & BUILDING DATA			
	<i>Existing</i>	<i>New</i>	<i>TOTAL</i>
SF	± 249,870 **	± 18,070	± 267,940
Visitor Parking	± 243 (South Lot)	± 23	± 266
Acreage	± 47.5	--	± 47.5

** Excludes SF that has been removed in demolition.

SECTION III. Design Executive Summary

OVERALL BUILDING PLAN

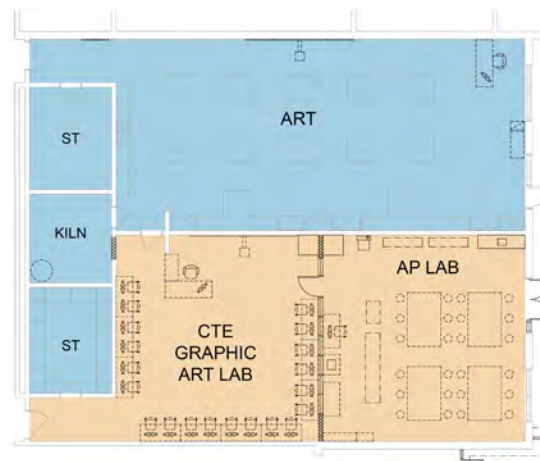
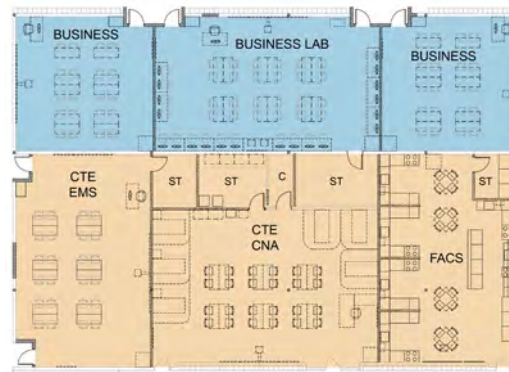
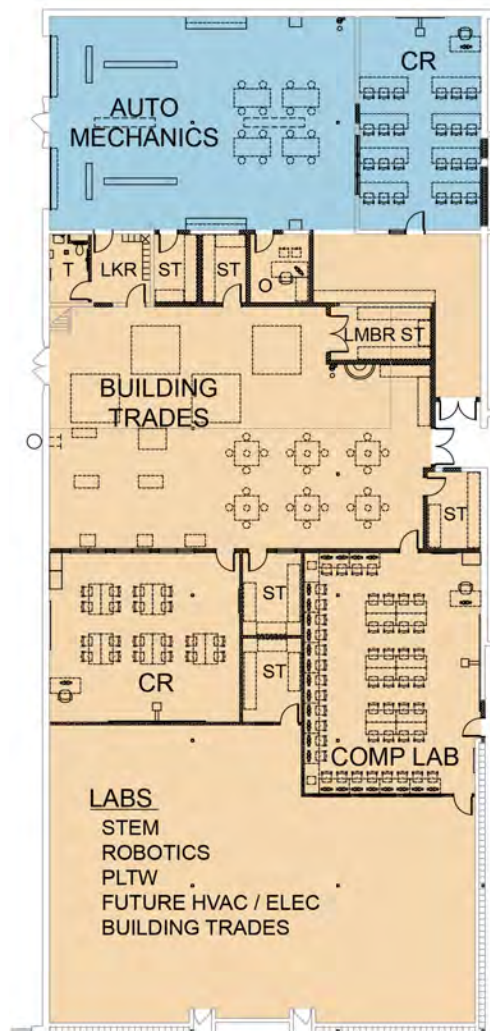




SECTION IV. Learning Environment Concepts & Opportunities

SECTION IV. Learning Environment Concepts & Opportunities

CTE & STEM IMPROVEMENTS

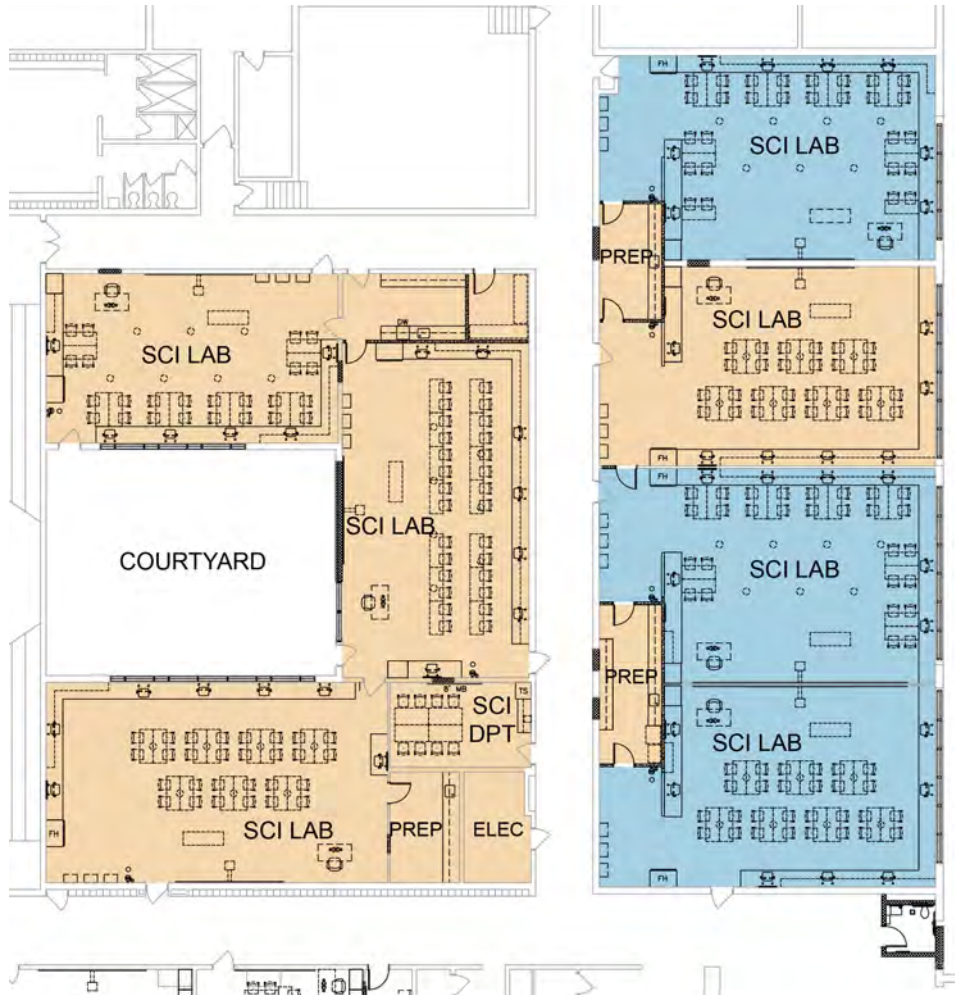


Considerations

- ☐ Programs taught in these updated spaces include:
 - Auto Mechanics
 - Building Trades
 - STEM / PLTW
 - CNA
 - EMS
 - Criminal Justice
 - Graphic Arts
- ☐ Flex Lab for Future CTE Opportunity

SECTION IV. Learning Environment Concepts & Opportunities

SCIENCE IMPROVEMENTS



Considerations

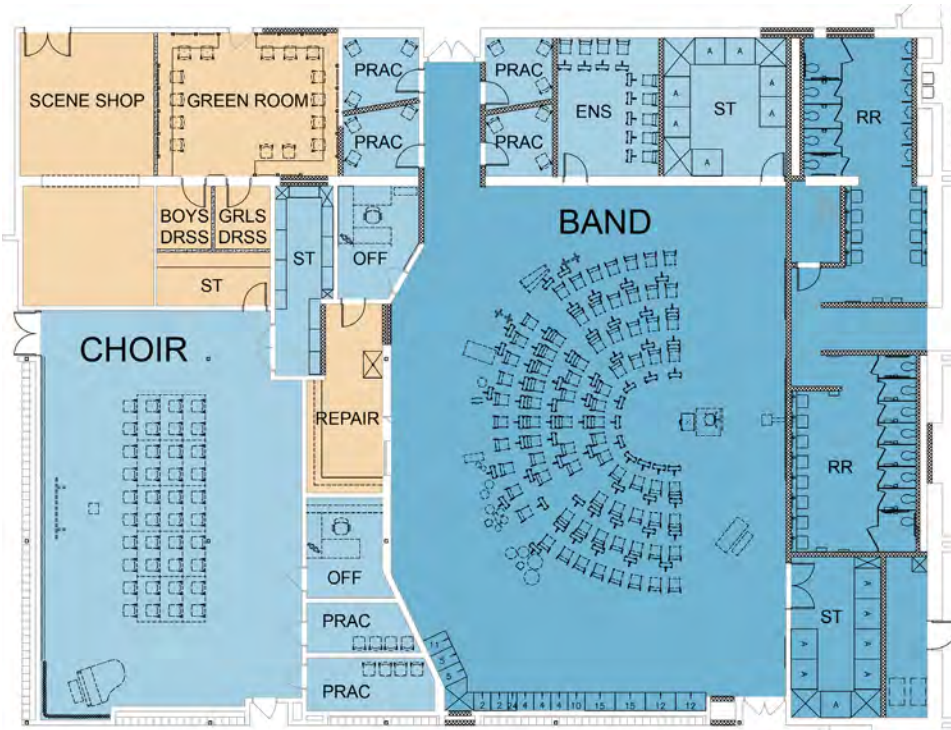
- ☐ Centralized Department
- ☐ Staff Collaborations
- ☐ Right-sized Labs
- ☐ Flexible Rooms
- ☐ CTE / Bio-Med Opportunities



SCIENCE CLASSROOM EXAMPLE

SECTION IV. Learning Environment Concepts & Opportunities

PERFORMING ARTS IMPROVEMENTS

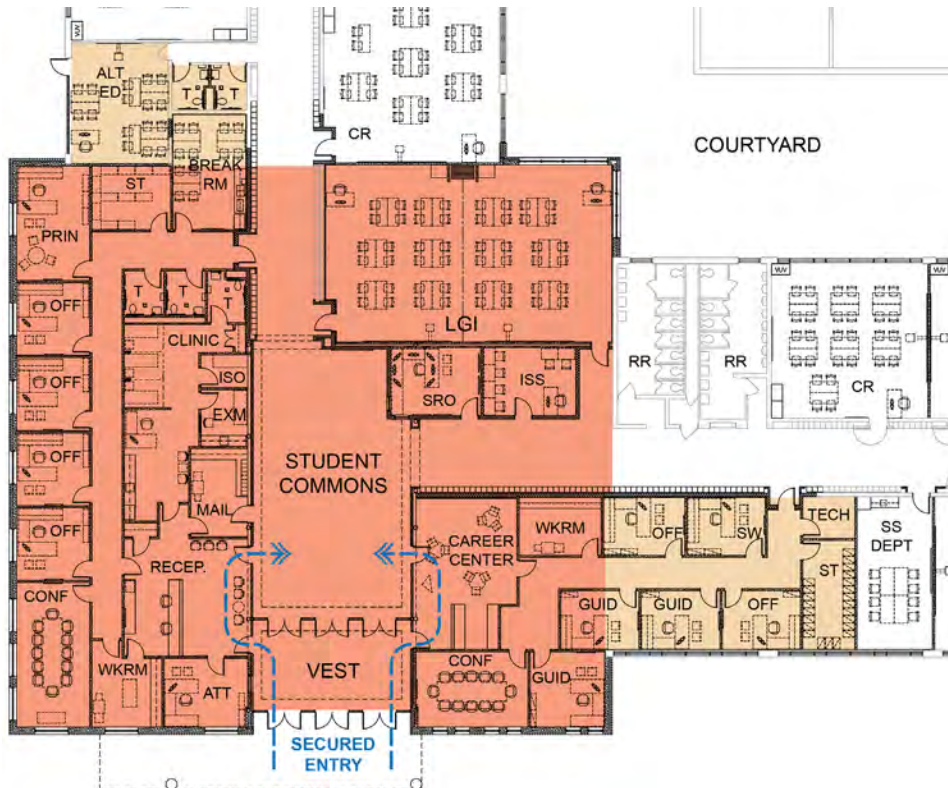


Considerations

- ☐ Band Room Expansion & Improvements
- ☐ Stage Floor Improvement
- ☐ New Auditorium Sound System
- ☐ Theatrical Lighting Upgrade
- ☐ New Stage Curtain

SECTION IV. Learning Environment Concepts & Opportunities

NEW CENTRALIZED OFFICE & STUDENT COMMONS



Considerations

- ☐ New Offices
- ☐ Attendance adjacent to entry
- ☐ Clinic
- ☐ Guidance and Career Center
- ☐ School Resource Office centrally located
- ☐ Student Commons with Clerestory
- ☐ Large Group Instruction / Flex Classrooms

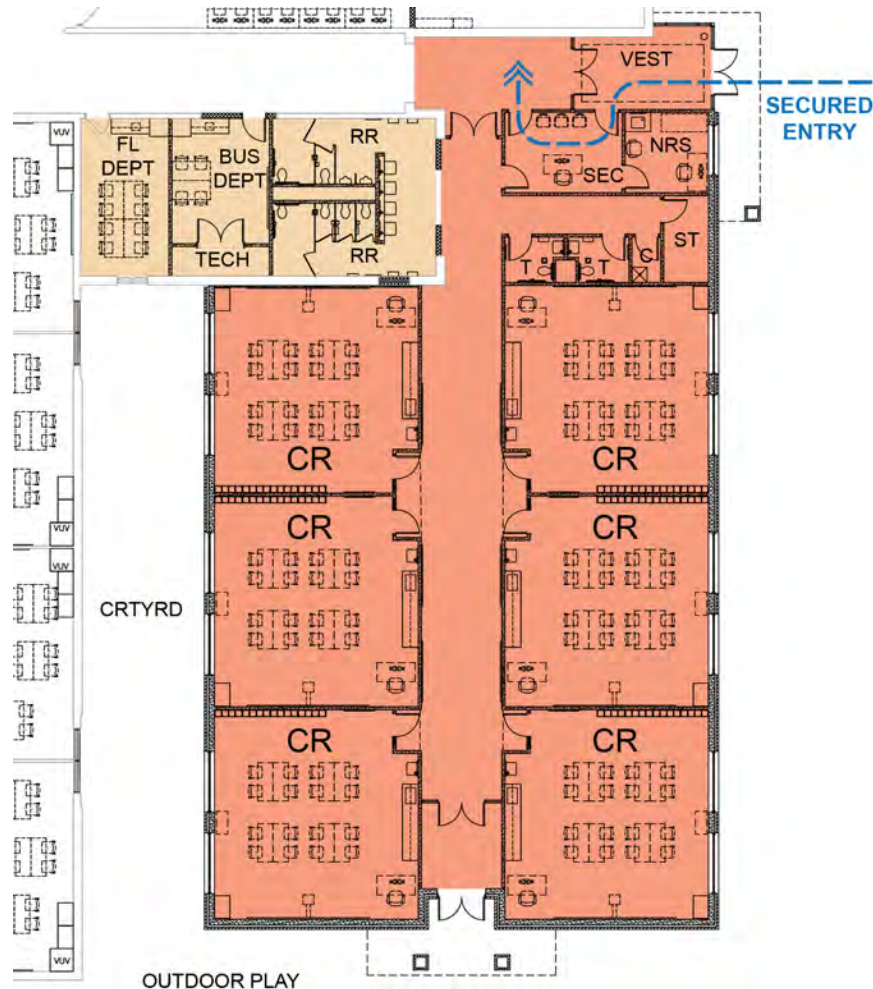
SECTION IV. Learning Environment Concepts & Opportunities

NEW CENTRALIZED OFFICE & STUDENT COMMONS



SECTION IV. Learning Environment Concepts & Opportunities

NEW EARLY CHILDHOOD CENTER



Considerations

- ☐ 6 Classrooms
- ☐ Secure "wing"
- ☐ Early Childhood CTE programming adjacent to Early Childhood "wing"
- ☐ Parent Drop / Pick-up Lane
- ☐ Secure outdoor Pre-school Play



SECTION V. Design Visualization

SECTION V. Design Visualization

SOUTHEAST VIEW OF NEW FRONT ENTRANCE



SECTION V. Design Visualization

SOUTHWEST VIEW OF NEW FRONT ENTRANCE



SECTION V. Design Visualization

NORTHEAST VIEW OF NEW EARLY CHILDHOOD CENTER



SECTION V. Design Visualization

SOUTHEAST VIEW OF NEW EARLY CHILDHOOD CENTER

