

Knowledge Skills Behaviors Awareness

Understanding Your PSAT/NMSQT® Results

PSAT/NMSQT®

Agenda

- Four Major Parts of Your PSAT/NMSQT Results
- More About Your Skills
- National Merit Scholarship Information
- More About Your Answers
- Next Steps
- How My College QuickStart™ Can Help You



Four Major Parts of Your PSAT/NMSQT Results

Name: STUDENT, IMA Year: 2013 Grade: 11 School Code: 123456 Optional Code: 00 Student Copy

PSAT/NMSQT[®] Score Report, Print

Critical Reading **Mathematics** **Writing Skills**

Your Scores

Section Scores: Above your projected SAT[®] scores at www.collegeboard.org/quickstart

50 52 44

Your Scores

Your Skills

Your Answers

Next Steps

your code below:

Online Access Code: A02670146P

Organization & Ideas: 2 of 8 questions correct (25.00%)
Data, Statistics & Probability: 3 of 8 questions correct (37.50%)
Correctly Formed Sentences: 1 of 8 questions correct (12.50%)

Understanding Literary Elements: Get suggestions for improving your

Relationship of Sentences & Paragraphs

3 Test Sections

Critical Reading

Mathematics

Writing Skills

Next Steps

You've taken a step on the path to college and the future. Here are some things to consider now...

So, you're thinking about: **Sport/Fitness Administration**
Learn more and see your full results: www.collegeboard.org/quickstart
Your access code: A02670146P

SAT[®] The PSAT/NMSQT is a great way to get ready for the SAT. The best time to take the SAT is spring of junior year. Register and practice at sat.org.

AP[®] Congratulations, your scores show that you have potential for success in at least one AP course! Let it be seen in your full report. AP courses bring college to high school to help you get ahead.

Your Skills

Your Skills

These skill categories can help you understand your score and focus your study efforts before you take the SAT.

To learn more about your skills and review suggestions for improvement based on your test performance, visit www.collegeboard.org/quickstart and sign in using your code below.

Online Access Code

A02670146P

Determining the Meaning of Words

9 of 15 questions correct (0 omitted)

Author's Craft: Style, Tone & Technique

3 of 5 questions correct (0 omitted)

Reasoning & Inference

8 of 10 questions correct (2 omitted)

Organization & Ideas

2 of 8 questions correct (2 omitted)

Understanding Literary Elements

4 of 10 questions correct (0 omitted)

Number & Operations

12 of 15 questions correct (1 omitted)

Algebra & Functions

5 of 5 questions correct (0 omitted)

Geometry & Measurement

8 of 10 questions correct (2 omitted)

Data, Statistics & Probability

6 of 8 questions correct (1 omitted)



Get suggestions for improving your skills before you take the SAT.
www.collegeboard.org/quickstart

Grammatical Relationships between Words

3 of 12 questions correct (1 omitted)

Words & Phrases Used to Modify or Compare

1 of 5 questions correct (2 omitted)

Phrases & Clauses

6 of 10 questions correct (2 omitted)

Correctly Formed Sentences

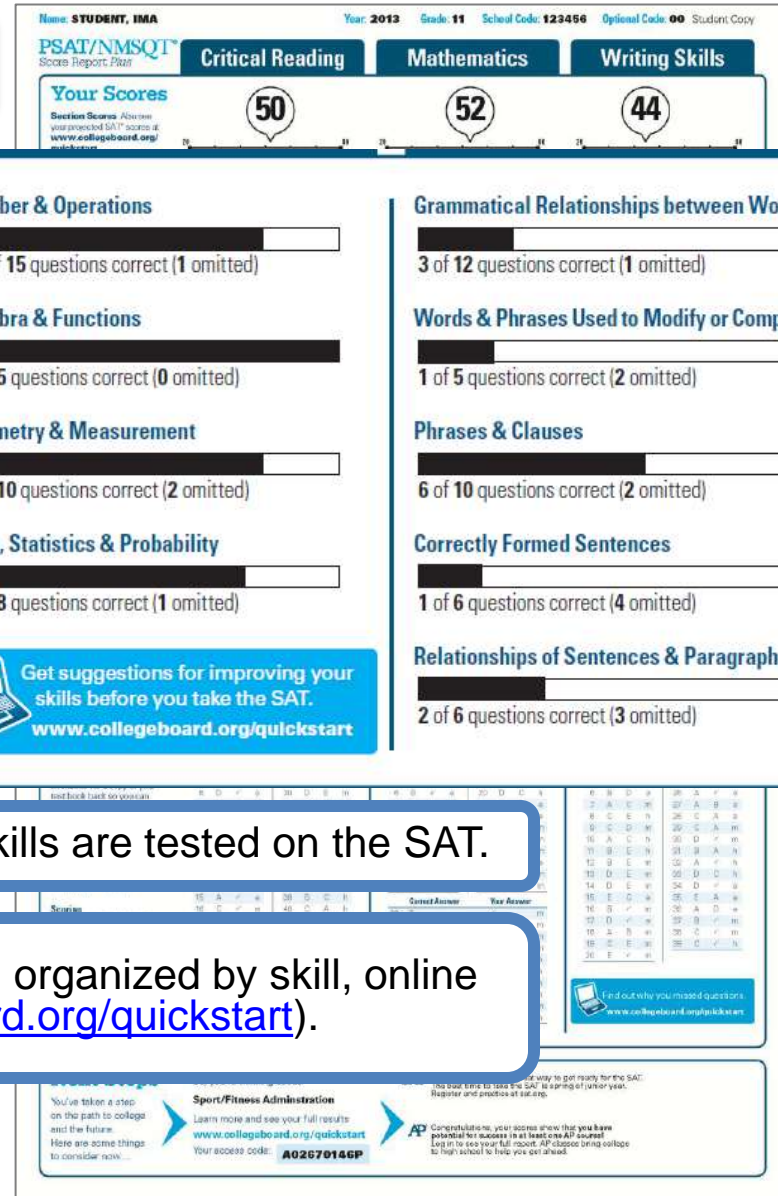
1 of 6 questions correct (4 omitted)

Relationships of Sentences & Paragraphs

2 of 6 questions correct (3 omitted)

See how you did on each skill. The same skills are tested on the SAT.

You can try hundreds of practice questions, organized by skill, online in My College QuickStart (www.collegeboard.org/quickstart).



National Merit Scholarship Corporation Information



National Merit Scholarship Corporation (NMSC) uses a Selection Index based on PSAT/NMSQT® scores as an initial screen of over 1.5 million students who enter its scholarship programs. (See reverse for more information.)

Your Selection Index

Sum of scores in critical reading, mathematics and writing skills.

146

Percentile

Compares your performance with college-bound juniors.

47

Entry Requirements

(Information you provided on your answer sheet.)

High school student:

YES

U.S. citizenship:

YES

Year to complete high school and enroll full-time in college:

2014

Years to be spent in grades 9–12:

4

The Selection Index is the sum of your critical reading, mathematics and writing skills scores.

If it has an asterisk, you do not meet all of the eligibility requirements for the competition.

The Percentile compares your performance to that of other college-bound juniors.

The Entry Requirements section displays information you provided on your answer sheet.

[illegible]

Your Answers

You will get your test book back with your PSAT/NMSQT results, so that you can review the questions.

You can also review each test question in My College QuickStart.

Home: STUDENT, IMA Year: 2013 Grade: 11 School Code: 123456 Optional Code: 00 Student Copy

PSAT/NMSQT[®] Score Report Plan

Critical Reading **Mathematics** **Writing Skills**

52 **44**

You scored higher than 52% of peers. You scored higher than 44% of peers.

Eligibility Information
If your selection index places you among the 10,000 high scorers who qualify for program recognition, you will be notified near September.

Number & Operations
2 of 10 questions correct (8 correct)

Algebra & Functions
1 of 5 questions correct (4 correct)

Geometry & Measurement
1 of 10 questions correct (9 correct)

Statistics & Probability
1 of 4 questions correct (3 correct)

Grammatical Relationships between Words
3 of 12 questions correct (9 correct)

Words & Phrases Used to Modify or Compare
1 of 5 questions correct (4 correct)

Phrases & Clauses
6 of 10 questions correct (4 correct)

Correctly Formed Sentences
1 of 6 questions correct (5 correct)

Relationships of Sentences & Paragraphs
2 of 6 questions correct (4 correct)

Key
Correct Answer
Incorrect Answer
Unanswered

Scoring
• Correct answers
• Incorrect answers
• Missing answers
• Wrong answers
• Wrong answers
• Wrong answers
• Wrong answers

Next
You've taken on the path and the fun. Here are some tips to consider.

SAIT The PSAT/NMSQT is a great way to get ready for the SAT. The best time to take the SAT is spring of junior year. Register and practice at sait.org.

AP Congratulations, your scores show that you have potential for success in at least one AP course! Log in to see your full report AP classes bring college credit, which is a huge advantage.

Question	Correct Answer	Your Answer	Difficulty
1	A	✓	e
2	B	✓	e
3	A	C	m
4	C	A	h
5	B	E	h
6	D	✓	e
7	B	✓	m
8	D	o	e
9	B	✓	m
10	E	B	h
11	D	✓	h
12	C	✓	m
13	A	✓	m
14	B	A	m
15	A	✓	e
16	C	✓	m
17	A	✓	e
18	E	✓	m
19	B	✓	m
20	B	E	m
21	E	✓	m
22	D	B	h
23	E	✓	m
24	A	✓	m

Your Answers: Student-Produced Responses

Some of the math problems required you to grid in answers instead of selecting an option. For these questions, you will see the correct answer(s) written out.

Name: **STUDENT, IMA** Year: **2013** Grade: **11** School Code: **123456** Optional Code: **00** Student Copy

PSAT/NMSQT
Score Report *Print*

Critical Reading	Mathematics	Writing Skills
50	52	44
Score Range: Scores in this range are similar to yours.	Score Range: Scores in this range are similar to yours.	Score Range: Scores in this range are similar to yours.
Percentile: The percentage of test-takers who scored below your score.	Percentile: The percentage of test-takers who scored below your score.	Percentile: The percentage of test-takers who scored below your score.

National Merit Scholarship Corporation
National Merit Scholarship Corporation (NMSC) uses a Selection Index based on PSAT/NMSQT scores as an initial screen of over 1.5 million students who enter the scholarship program. Please visit www.nmsc.org for more information.

Your Selection Index
Sum of scores in critical reading, mathematics and writing: **146**
Percentile: Compare your performance with college-bound seniors: **47**

Entry Requirements
Information you provided on your answer sheet:
High school student: **YES**
U.S. citizenship: **YES**
Year to complete high school and attend college in college: **2015**
Plans to be spent in grades 9-12: **4**

Eligibility Information
If your Selection Index places you among the 16,000 high scorers who qualify for program recognition, you will be notified next September.

Your Skills
These skill categories can help you understand your score and focus your study efforts before you take the SAT.
To learn more about your skills and how to improve your performance, visit www.collegeboard.org/sat/skills and sign your code below.

Determining the Meaning of Words	Number & Operations	Grammatical Relationships between Words
9 of 15 questions correct (60 percent)	12 of 15 questions correct (80 percent)	3 of 12 questions correct (25 percent)
Author's Craft: Style, Tone & Techniques	Algebra & Functions	Words & Phrases Used to Modify or Compare
3 of 5 questions correct (60 percent)	3 of 5 questions correct (60 percent)	1 of 5 questions correct (20 percent)
Reasoning & Evidence	Geometry & Measurement	Phrases & Clauses

Online Access Code
A02670146

	Correct Answer	Your Answer
29	7	✓ m
30	3	✓ m
31	4.5 or 9/2	✓ m
32	1000	✓ m
33	10, 12, 14, or 16	✓ h
34	8/5 or 1.6	✓ h
35	29	✓ h
36	108	50.9 h
37	42	4.2 m
38	8	10 h

Key
P: Pencil
C: Pencil
M: Mark
U: Unmarked

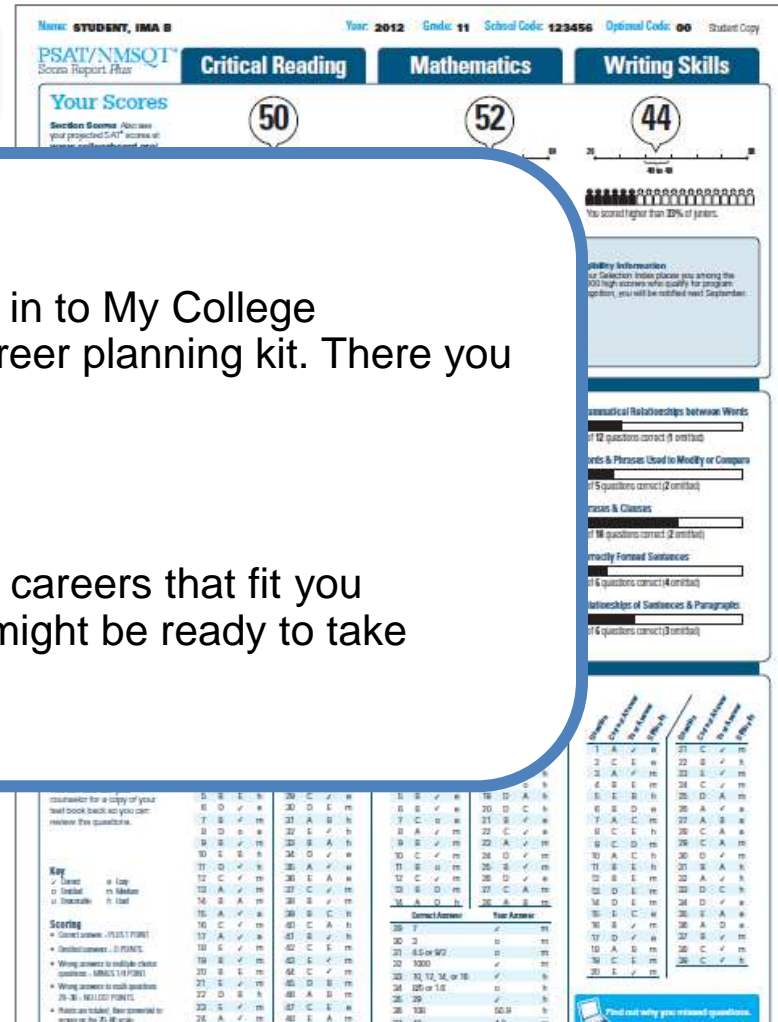
Scoring
• Correct answer = 1 point
• Incorrect answer = 0 points
• Missing answer to multiple-choice question = 0 points
• Wrong answer to math question = 0 points
• Wrong answer to math question = 0 points
• Wrong answer to math question = 0 points

Next Steps
You've taken a step on the path to college and the future. Here are some things to consider now...

Sport/Fitness Administration
Learn more and see your full results: www.collegeboard.org/quickstart
Your access code: **A02670146P**

AP
Congratulations, your scores show that you have potential for success in at least one AP course! Log in to see your full report AP classes bring college to high school to help you get ahead.

Next Steps



What's next?

Use the access code on your report to log in to My College QuickStart, a personalized college and career planning kit. There you can:

- Search for colleges
- Get a personalized SAT study plan
- Take a personality test to find majors and careers that fit you
- Learn more about AP[®] courses that you might be ready to take

www.collegeboard.org/quickstart

Next Steps

You've taken a step on the path to college and the future. Here are some things to consider now...

So, you're thinking about:

Sport/Fitness Administration

Learn more and see your full results

www.collegeboard.org/quickstart

Your access code

A02670146P

SAT The PSAT/NMSQT is a great way to get ready for the SAT. The best time to take the SAT is spring of junior year. Register and practice at sat.org.



Congratulations, your scores show that you have potential for success in at least one AP course! Log in to see your full report. AP classes bring college to high school to help you get ahead.

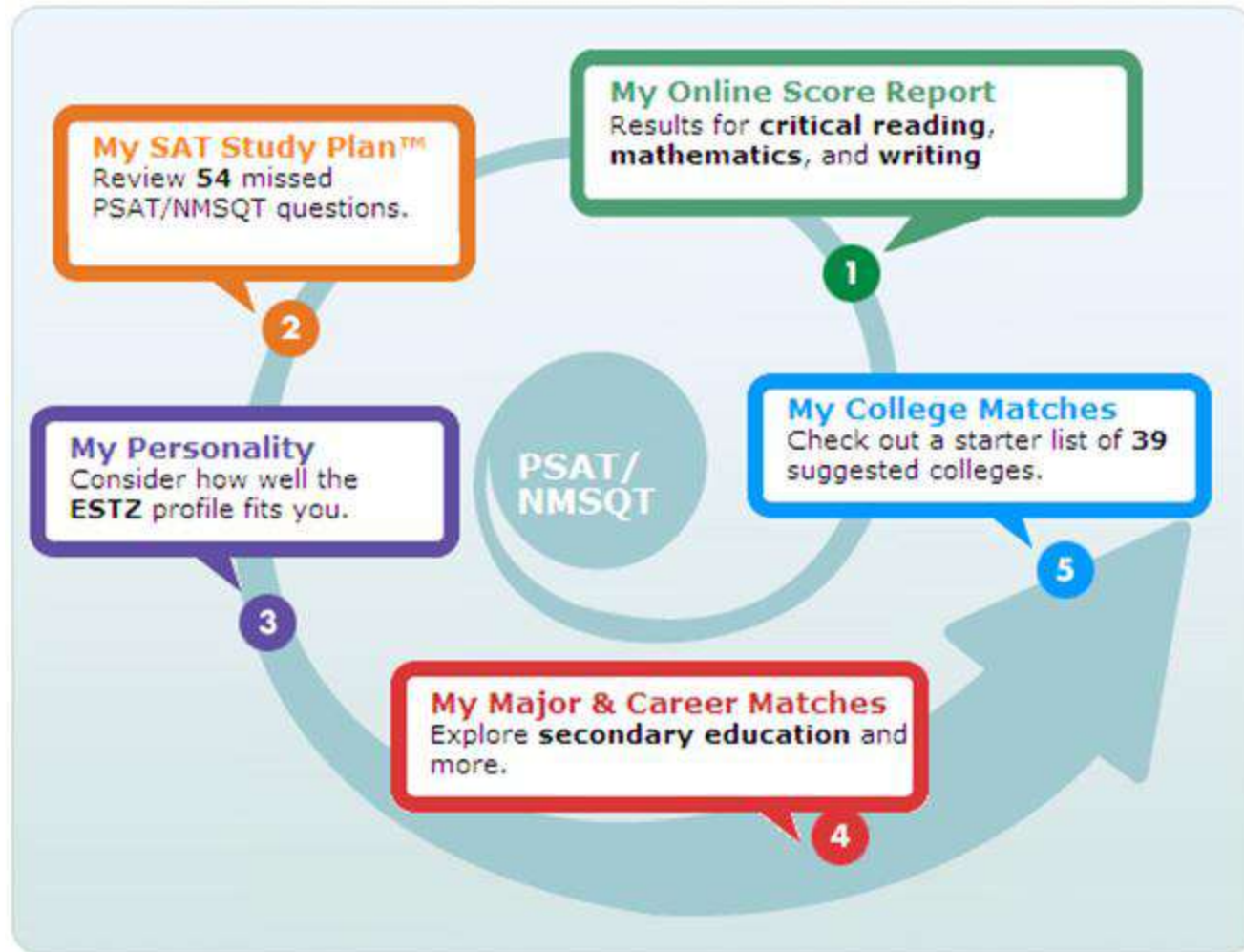


Knowledge Skills Behaviors Awareness

How Can My College QuickStart® Help You?

PSAT/NMSQT®

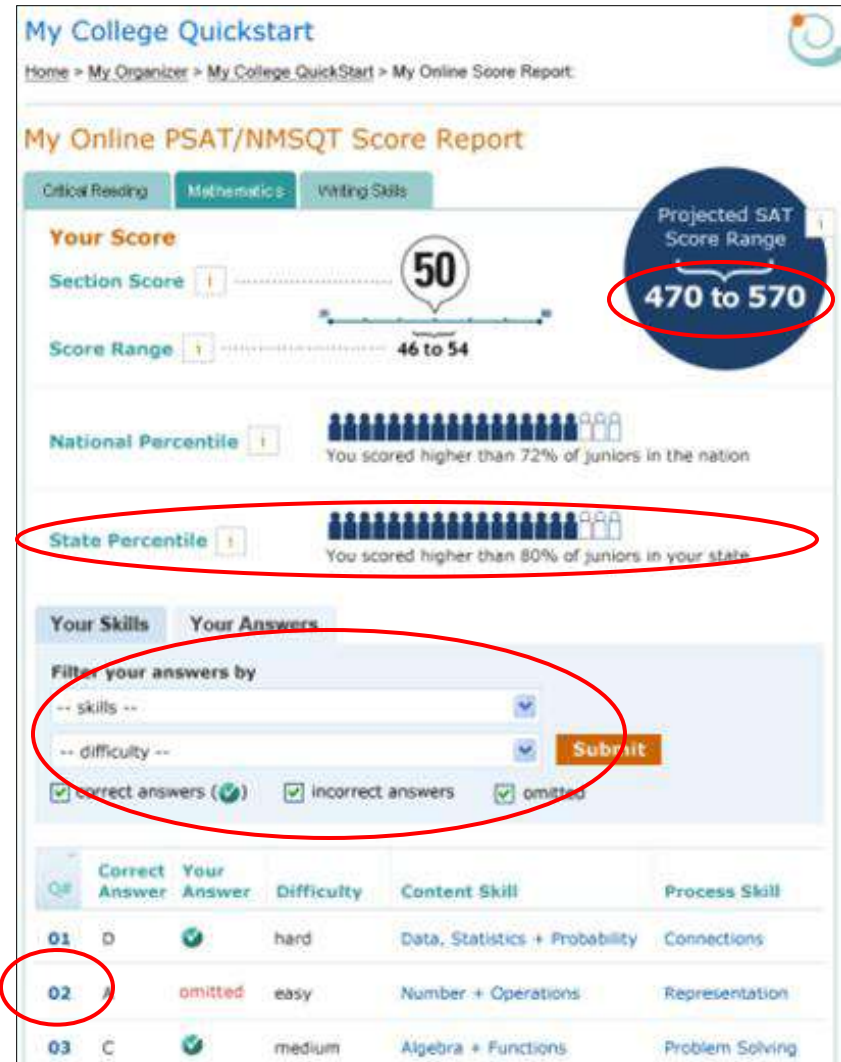
My College QuickStart



My College QuickStart

My Online Score Report

- Projected SAT® score ranges
- State percentiles
- You can filter questions
- Questions and answer explanations



My College QuickStart

My SAT Study Plan™

- Personalized skills to improve
- SAT practice questions
- An official SAT practice test

My SAT Study Plan™

Study Plan Home Meet the SAT Critical Reading Mathematics Writing **Practice Test**

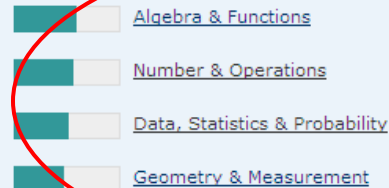
Review & Practice My Skills Feedback Get Test-Taking Advice

My Skills Feedback

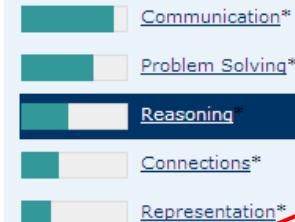
This feedback was created especially for you, based on your PSAT/NMSQT results.

1. Select a skill with a lower performance bar and review the test questions you answered incorrectly. Then try the question again and read the answer explanations.
2. If you find the practice questions too easy, you're probably ready for the next harder level. If you find them too hard, try the next easier level.

Content Skills



Process Skills



* These math-only process skill groups were not included on your Score Report Plus.

Skill Group: Reasoning

3 of 7 correct (1 omitted)

Definition

Develop and use mathematical arguments and proofs to explore the truth of conjectures and justify conclusions.

Answers

Omitted 1 37 (view all)
Incorrect 3 16, 26, 35 (view all)
Correct 3 10, 22, 32 (view all)

Practice Now

Skills **too easy**? [Try some harder practice questions](#)

Skills **too hard**? [Try some easier practice questions](#)

My College QuickStart

The screenshot displays the 'My College QuickStart' interface. At the top, there are five tabs: 'INSIGHTS' (yellow), 'I.D. ME' (red), 'EXPLORE MAJORS' (purple), 'FIND A COLLEGE' (orange), and 'RESEARCH CAREERS' (green). The 'I.D. ME' tab is selected, and a sub-tab 'I.D. ME' is also highlighted in red. On the left side, there is a vertical navigation menu with four main items: 'Introduction', 'QuickStarts', 'ORA Personality Profiler*', and 'View My Profile'. Below these are three categories of personality types: 'THE TROUBLESHOOTERS' (ISTA, ISFA, ESTA, ESFA), 'THE TRADITIONALISTS' (ESTZ, ESFZ, ISTZ, ISFZ), and 'THE CATALYSTS' (INFA, ENFA, ENFZ, INFZ). The 'Introduction' item is selected, and a red arrow points to it. The main content area is titled 'The Traditionalists' in a large, bold, orange font. Below the title, there is a diagram showing the Myers-Briggs type 'ISFZ' with its components: 'introverting' (introverting), 'sensing' (sensing), 'feeling' (feeling), and 'organizing' (organizing). A red arrow points to 'ISFZ The Provider'. The text describes ISFZs as responsible, caring, reserved, and cooperative, with a modest style of helping others. It mentions that they believe it is important to follow rules and laws, adhere to routine, and prefer traditions. They are prone to worry about things beyond their control and may appear less confident. A yellow starburst icon indicates that 'About 6% of MyRoad participants' are ISFZs. The text continues to describe their social preferences, noting they like close friends and family, are good at coordinating tasks, and avoid interpersonal conflict. It also mentions they are organized and focused learners who meet deadlines and obligations. The section 'Your Strengths Include...' lists 'A practical and dependable nature.' as a strength.

INSIGHTS **I.D. ME** **EXPLORE MAJORS** **FIND A COLLEGE** **RESEARCH CAREERS**

I.D. ME

Introduction **QuickStarts** **ORA Personality Profiler*** **View My Profile**

THE TROUBLESHOOTERS
ISTA ISFA
ESTA ESFA

THE TRADITIONALISTS
ESTZ ESFZ
ISTZ ISFZ

THE CATALYSTS
INFA ENFA
ENFZ INFZ

The Traditionalists

ISFZ The Provider

introverting sensing feeling organizing

ISFZs are responsible, caring, reserved, and cooperative. As an ISFZ you have a modest style of helping others in orderly and practical ways. You believe it is important to follow rules and laws; similarly, you adhere to routine and prefer to see traditions preserved with little change. You are prone to worry about things beyond your control and may appear to be less confident because of your tendency to become stressed or agitated and not ask for help.

About 6% of MyRoad participants

You like to be with a few close friends and family members and to offer personal support wherever and whenever needed. You are good at coordinating tasks and activities for everyone but may become overburdened by taking on other people's problems. Likewise, you don't ask for the recognition you would like to have. You are quietly loyal to family, friends, and groups and institutions that are important to you, and you hope others will be as loyal in return. You avoid interpersonal conflict at all costs.

As an ISFZ you are an organized and focused learner who is good at memorizing facts and details related to people. You reliably meet deadlines and obligations. You excel at coordinating and scheduling your own activities and keep yourself and your belongings neat and in good order. You prefer to work on projects and tasks that are useful in a practical way.

Your Strengths Include...

- A practical and dependable nature.

My College QuickStart

My College Matches

- Starter list of colleges
- Criteria to customize search
- Ability to save searches

City University of New York: Hunter College
New York, New York
College Board code: 2301

[Add to List](#)
[Compare](#)
[Find Similar](#)
[Map It](#)
[Print Full Profile](#)
[Send to a Friend](#)

▼ At a Glance Deadlines	► Admission SAT®, AP®, CLEP®	► Cost & Financial Aid Majors	► Academics & Support Housing & Campus Life	► Sports International Students
---	--	---	---	---

Main Address
 695 Park Avenue
 New York, NY 10065
 (212) 772-4000
www.hunter.cuny.edu

Admission Office
 695 Park Avenue
 New York, NY 10065
 (212) 772-4490
admissions@hunter.cuny.edu
 Contact: William Zlata
 Director of Admissions

Type of School
 Public
 Liberal Arts College
 Four-year
 Coed
 Percent applicants admitted: 28%
 Regionally Accredited
 Middle States Association of Colleges and Schools
 College Board member

Calendar: Semester
Degrees offered:

- Bachelor's
- Master's

Setting
 Urban setting
 Very large city (over 500,000)
 Commuter campus

Size
 Total undergrads: 15,698
 First-time degree-seeking freshmen: 2,042
 Degree-seeking undergrads: 14,709
 Graduate enrollment: 5,560

My College QuickStart

INSIGHTS

I.D. ME

EXPLORE MAJORS

FIND A COLLEGE

RESEARCH CAREERS

CIVIL ENGINEERING

Overview | High School Courses | College Courses | Career Connection | Perspectives

Majors A-Z

My Interest ?

High

Medium

None

Updated: 8-31-2009

Topics


Construction Engineering & Management

Environmental Engineering

Geological Engineering

Geotechnical Engineering

Mining Engineering



Overview


The ancient Egyptians built pyramids and levees. The Romans built aqueducts and the Colosseum. The Persians and ancient Greeks undertook massive building projects. Civil engineering has been practiced for thousands of years.

Civil engineers plan, design, build, and repair just about anything you can think of. That includes buildings, bridges, dams, tunnels, highways, stadiums, sewage treatment plants, power plants, airports, and even satellites. These days they're also in demand to repair the damage caused by natural disasters such as earthquakes, hurricanes, and floods. And our crumbling public structures, from bridges to tunnels, all need civil engineers to repair them.

Civil engineers plan, design, build, and repair just about anything you can think of.

Civil engineers specialize in different areas. Transportation engineers, for example, tackle problems like traffic jams and air travel safety. Water resources engineers work to control the flow of rivers and ensure clean drinking water.

As a civil engineering major, you'll take classes in several fields before focusing on one. But you'll find there's overlap in some course work. For instance, you'll learn how to build structures that can stand up to earthquakes in both geotechnical and structural engineering. In a geotechnical engineering course, you'll focus on soil structure and foundation design. But when you study structural engineering, you'll be more concerned with designing



My College QuickStart

My AP Potential

- List of AP courses
- Which ones are offered at your school

Review 34 missed PSAT/NMSQT questions.

My Personality

Consider how well the **ENTA** profile fits you.

...ning kit, Ima.

s with My College QuickStart.

Online Score Report: 2012

for critical reading, mathematics, and writing

My College Matches

Check out a starter list of **109** suggested colleges.

My Major & Career Matches

Explore **math & statistics** and more.

Help ?

Ima Student

pujamshr00@gmail.com

[Update My Info](#) | [Sign Out](#)

My AP Potential

Learn more about your AP Potential and see which **AP** Courses are the best fit for you.

[View Your Potential](#)

Your Past PSAT/NMSQT Tests

- [2011](#)
- [2010](#)
- [2006](#)

My College QuickStart

My AP Potential

- Choose a major to see which courses match it.
- Interpret your report to see whether you are ready to take a course.






is report to see your potential for AP courses based on your scores. AP cou [more...](#)

the full list of courses
have potential for AP courses that aren't currently on your radar.

loser look
ar list to see courses related to the college majors that interest you.
[Learn more](#) about each course and how it can help you succeed in college.

3 Talk to your school counselor and teachers
They can help you decide the best course for you!

Please Select A Major

AP Courses	Potential	Matches Major	Your School Offered This Course
Psychology			✓
Art History			✓
Calculus BC			✓
English Language			✓
European History			✓

Ima Student
pujamsr00@gmail.com
[Update My Info](#) | [Sign Out](#)

Interpret your report

Potential

Your scores show that you have the potential for success in this course. Speak with your school coun [more...](#)

Some Potential

Your scores show that you have some potential for success in this AP course. Having interest in the [more...](#)

Potential Not Yet Indicated

Your scores show that you may need more preparation and support to be successful in AP. Share your g [more...](#)

What is AP?

My College QuickStart

Log in to your personalized account at
www.collegeboard.org/quickstart