

Guess Who?



Directions: Read the hint & answer the 3 questions below.

Hint: This **principal** character from a popular cartoon loves honey.

1.) Is **principal** being used correctly in this example?

2.) How do you know?

3.) Who is in the image? If not sure, just take a guess!

Guess Who?

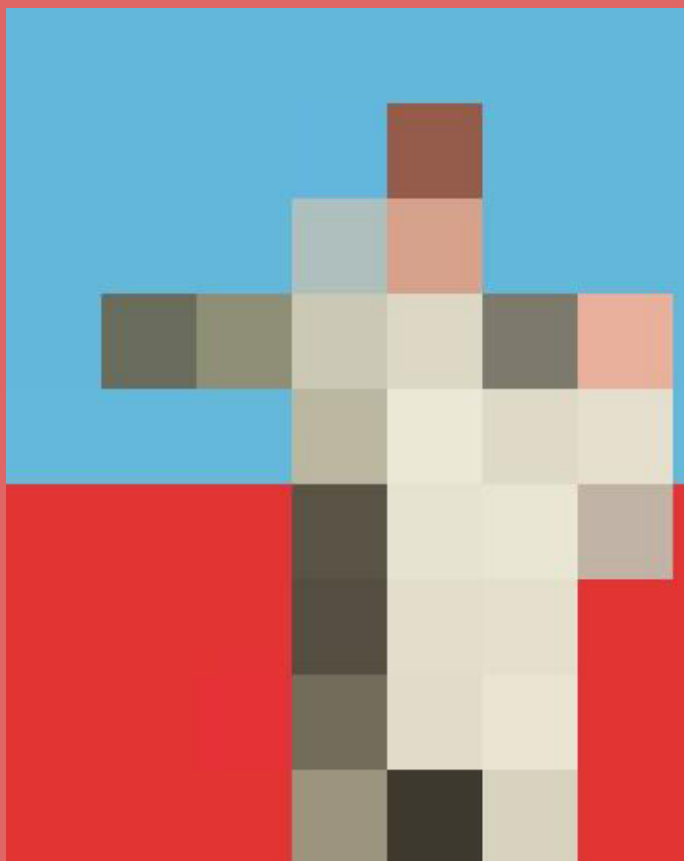


Directions: Read the hint & answer the 3 questions below.

Hint: Don't let my cute factor fool you. Despite being a baby, I am a force **too** be reckoned with on any planet.

- 1.) Is **too** being used correctly in this example?
- 2.) How do you know?
- 3.) Who is in the image? If not sure, just take a guess!

Guess Who?

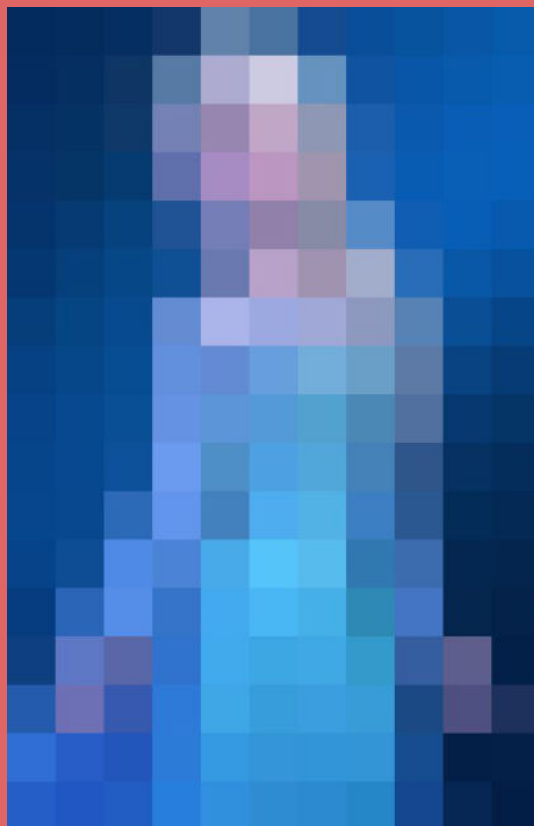


Directions: Read the hint & answer the 3 questions below.

Hint: I am going to take over the world one day. My legacy will live on **through** Mini-Me.

- 1.) Is **through** being used correctly in this example?
- 2.) How do you know?
- 3.) Who is in the image? If not sure, just take a guess!

Guess Who?



Directions: Read the hint & answer the 3 questions below.

Hint: This royal character has mood swings that **effect** those around her. You can find her in the frozen food aisle.

- 1.) Is **effect** being used correctly in this example?
- 2.) How do you know?
- 3.) Who is in the image? If not sure, just take a guess!

Guess Who?



Directions: Read the hint & answer the 3 questions below.

Hint: This fry cook is smarter **than** the average fungus (or fun guy).

- 1.) Is **than** being used correctly in this example?
- 2.) How do you know?
- 3.) Who is in the image? If not sure, just take a guess!

Guess Who?

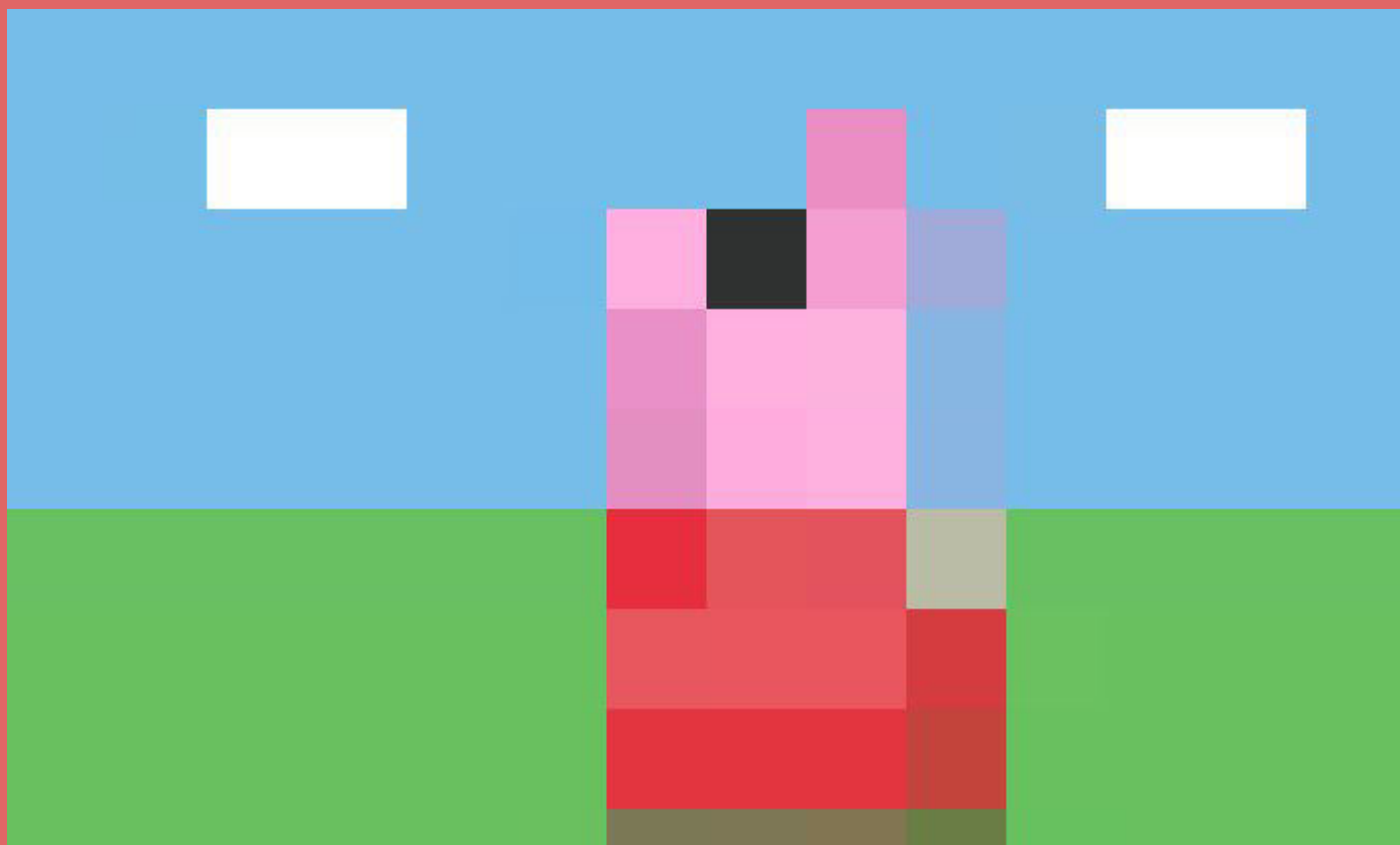


Directions: Read the hint & answer the 3 questions below.

Hint: You can [see](#) this psychedelic group's van coming to solve crimes.

- 1.) Is **here** being used correctly in this example?
- 2.) How do you know?
- 3.) Who is in the image? If not sure, just take a guess!

Guess Who?



Directions: Read the hint & answer the 3 questions below.

Hint: This little one got dressed up and **threw** herself into the mud.

- 1.) Is **than** being used correctly in this example?
- 2.) How do you know?
- 3.) Who is in the image? If not sure, just take a guess!

Guess Who?



Directions: Read the hint & answer the 3 questions below.

Hint: You can catch me at the grocery store in the vegetable isle. You might recognize me from my starring role in *Space Jam*.

- 1.) Is **isle** being used correctly in this example?
- 2.) How do you know?
- 3.) Who is in the image? If not sure, just take a guess!

Guess Who?

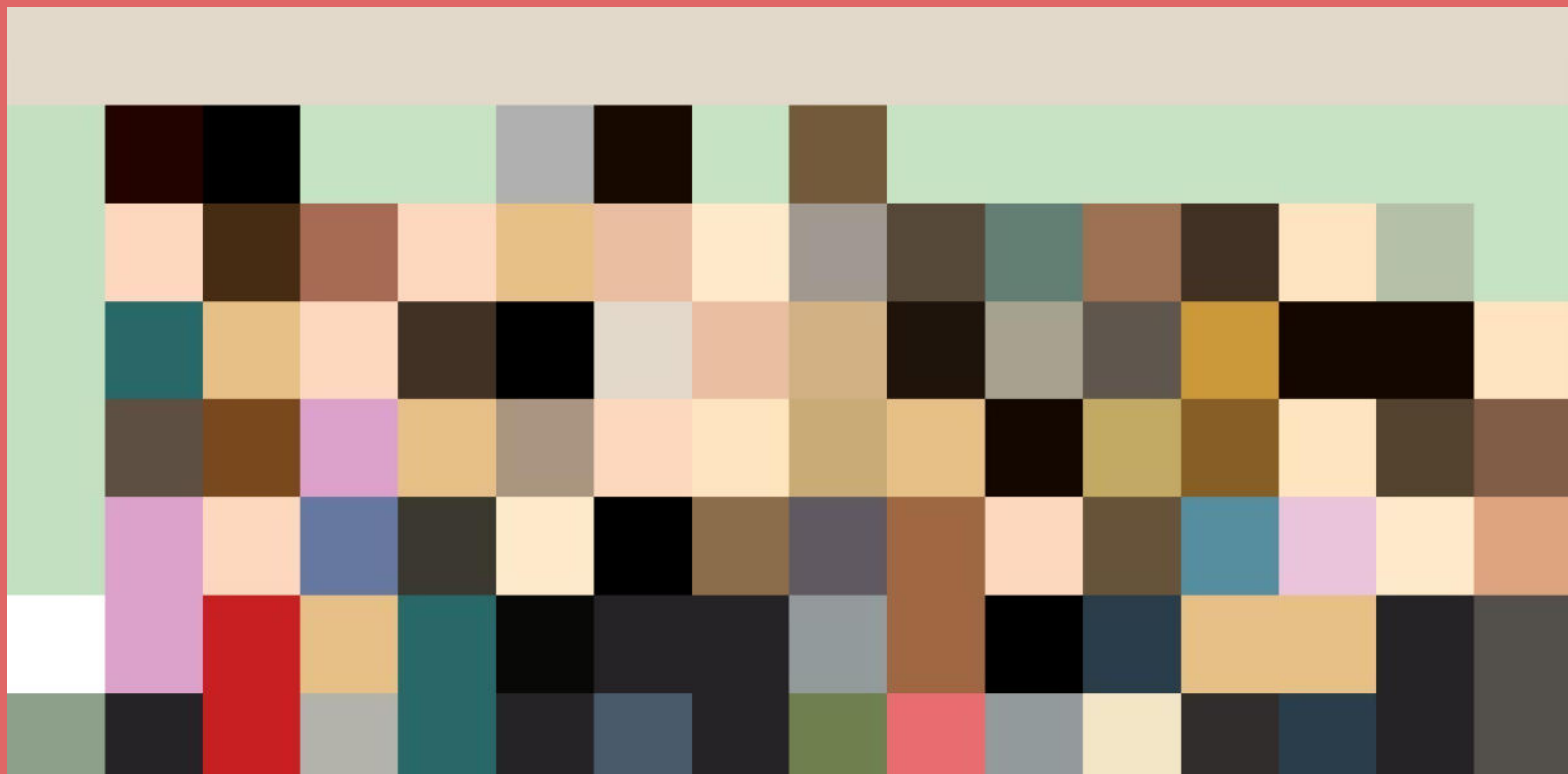


Directions: Read the hint & answer the 3 questions below.

Hint: I have pride in my land. If you see my uncle, then don't mention that you know me.

- 1.) Is **then** being used correctly in this example?
- 2.) How do you know?
- 3.) Who is in the image? If not sure, just take a guess!

Guess Who?



Directions: Read the hint & answer the 3 questions below.

Hint: These teenagers mean more to **their** teacher than they may ever realize. They're working hard to complete English lessons despite everything going on in the world.

1.) Is **their** being used correctly in this example?

2.) How do you know?

3.) Who is in the image? If not sure, just take a guess!