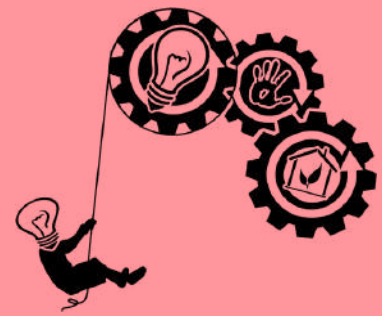


GIFTED & TALENTED NEWSLETTER



WESTERN BROWN LOCAL SCHOOLS

JANUARY 2023

YOU ASKED... WE LISTENED

Communication is KEY

Our Gifted & Talented survey showed that we need to do better sharing information about our Gifted and Talented program.

We are excited to offer this Newsletter as a way to inform our community (families, students, and staff) about our program, resources that may benefit your gifted child(ren), student highlights, and more!

Our goal is to create quarterly Newsletters and share on our District Website, ABRE, as a digital link via Final Forms.

What is ABRE? How do I access it?

As a District, we now write, share, sign, and archive WEPs (Written Education Plans), WAPs (Written Acceleration Plans) and No Service Letters for our gifted and talented students.

Teachers will have access to created district



"SOMEWHERE SOMETHING INCREDIBLE IS WAITING TO BE
KNOWN." -CARL SAGAN

WEP forms, to curate student's individualized WEPs, student 360 (to view all student data/information/testing/etc.

Parents will have access to view and sign student's WEP, WAPs, and No Service Letters (when applicable) and view student's progress on Student 360.

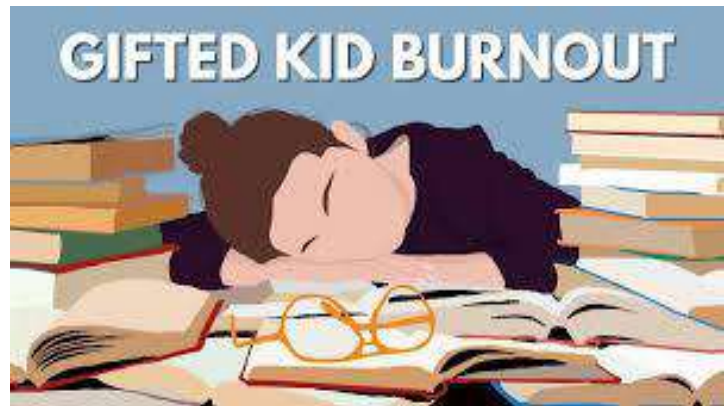
ABRE also offers opportunities for simple avenues of communication through Headlines and Announcements. We use these channels to continue our goal of transparency and information for our educational team (our district staff, parents, and students) to provide the best educational opportunities for our students.

To access ABRE, go to wb.abre.io. You will be prompted to sign in with a Google account or through Facebook. Once logged in add your student's token (sent home in the ABRE On-Boarding Letter (in November 2022)). Contact danielle.sawyers@wbbrncos.com if you need another token code for ABRE.

Check out our Parent Padlet!



Social Emotional Corner



Social Emotional Corner will showcase one emotional characteristic that gifted and talented students often face.

The social emotional needs are an important focus of gifted and talented programming. Our students shared in the recent Gifted and Talented Survey that they do not feel that we are identifying and helping them with the social emotional needs they are facing. Examples of SEL needs are: perfectionism, burnout, lack of motivation, social skills, issues staying on task and focusing, overly stressed, and anxiety.

Talk to your child about how their SEL needs may be affecting them personally.

Great conversation starters:

"How do you feel about your workload right now?"

"How supported do you feel? Can I do anything to help you?"



STUDENT SHOWCASE

Macy's Thanksgiving Day Parade

Three of our High Marching Band members auditioned and participated in the Macy's Thanksgiving Day Parade.

Kaiya Schaffner (12th grade) played the mellophone
This is her 2nd year of participation.

Isaac Bernhardt (12 grade) played the clarinet).

Rebekah Bernhardt (10th grade) played the alto saxophone.

Congratulations on this exceptional showcase of your talent, persistence, and representing WBLS in NYC.



How are children identified as Gifted & Talented?

Assessments for identification of gifted and talented abilities are chosen by the WBLS. The Ohio Department of Education (ODE) requires certain areas to be tested within particular grade bands. The ODE also releases an annual list of approved assessments that schools must adhere to.

Over time the assessments have changed as have the grade bands. Our annually updated District Testing Policy is posted on the WBLS Gifted and Talented Education webpage, ABRE, and the Teacher and Parent Padlets. We also submit this information to the ODE for compliance.

We are currently using the following assessments for gifted and talented identification at WBLS:

- IOWA (for referrals and acceleration)
- CogAT (1st grade, 2nd grade, 4th grade)
- MAP (2-10: Math and Reading)
- ACT (High School when submitted)
- TTCT (for Creative Thinking referrals)
- SRBCSS (Visual and Performing Arts)

*Formal psychological testing is also approved for identification as per the ODE Handbook.

Ms. Natalie Cook's classroom is working on a STEAM project! Here is what she had to say,

"We are currently designing recycled cars to connect with our Force & Motion Unit. Students used recycled materials to design a car powered by wind. They then tested their designs and redesigned until they were satisfied with their final product. We held a race day to compete against each other. We did a second race day where students learned how to calculate the speed, by having each car race a different distance, collected time data, and then they calculated the speed for each car and compared their data to determine who was the fastest."

