



GHS Phasing Review Student Edition

12/14/17



Main Gym & Auditorium Closed 12/28-29

12/14/17

Gresham High School

1200 N. Main Avenue

December 6, 2017





construction phasing

Gresham High School

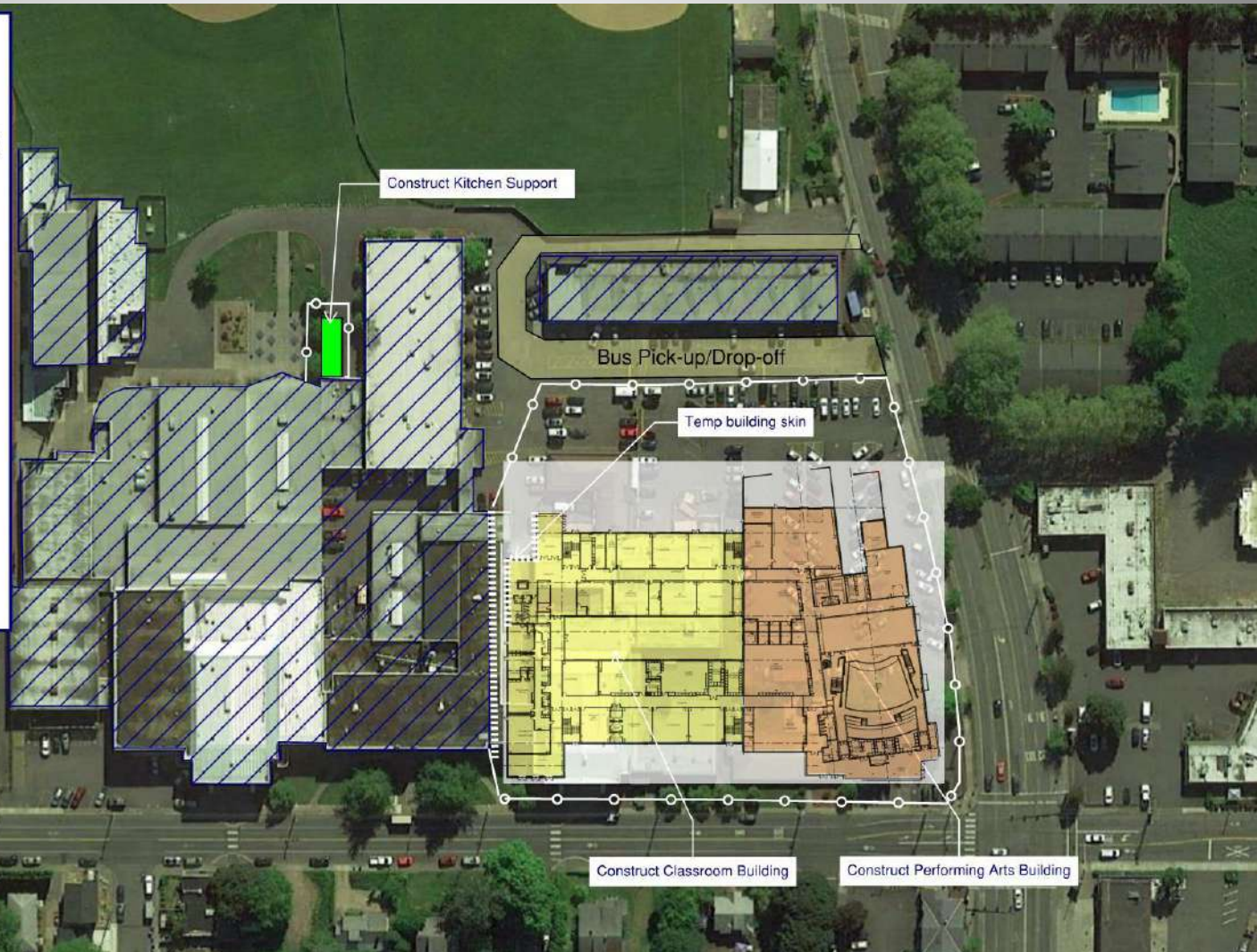
School Year 2018/19 - Phase One

Sept 19, 2018 - June 13, 2019 (267 days)

- Construct Performing Arts Building
- Construct Classroom Building
- Construct Kitchen Support
- Maintain existing bus pick-up/drop-off

- Abatement activities
- New construction
- Occupied
- Performing Arts Building (Ph 1)
- Classroom Building (Ph 1)

- Construction fencing
- Temp shoring or skin



Gresham High School
1200 N Main Ave
Gresham, OR

Design Commission
City of Gresham 10.18.17

PHASE 1 MARCH 26, 2018 – JUNE 20, 2018

- Auditorium, Band, Choir, Drama, 2D Art, Graphics CTE, Auto
- Loss of some Student Parking – TBD
- Buses – Business As Usual (Front and Back)
- Area(s) will be sealed off from access

PHASING TIMING – PHASE 1A

March 26, 2018 to May 1, 2018

- Abatement (reduction) of Phase 1 Building
- “Soft” Demolition
- Miscellaneous Site Work / Prep

PHASING TIMING – PHASE 1A

March 26, 2018 to June 20, 2019

- Band – Upper Mat Room
- Choir – Cafeteria NE Corner (Risers)
- Drama – Lower Mat Room
- Art – 117 (Built Out)
- CTE – Library (Built Out)
- Ruff, AUTO – Library Computer Lab (May 1st)
- Counseling offices - Room 240

Gresham High School

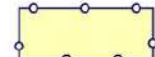
Phase 1A

March 26, 2018 to May 1, 2018

Work Performed

- Abatement of phase one building
- Soft demolition
- New MDF/Elect Room @ PE/Health
- Misc site work

Area of Work
(Secured)



Demo Buffer
Area (Secured)



Egress



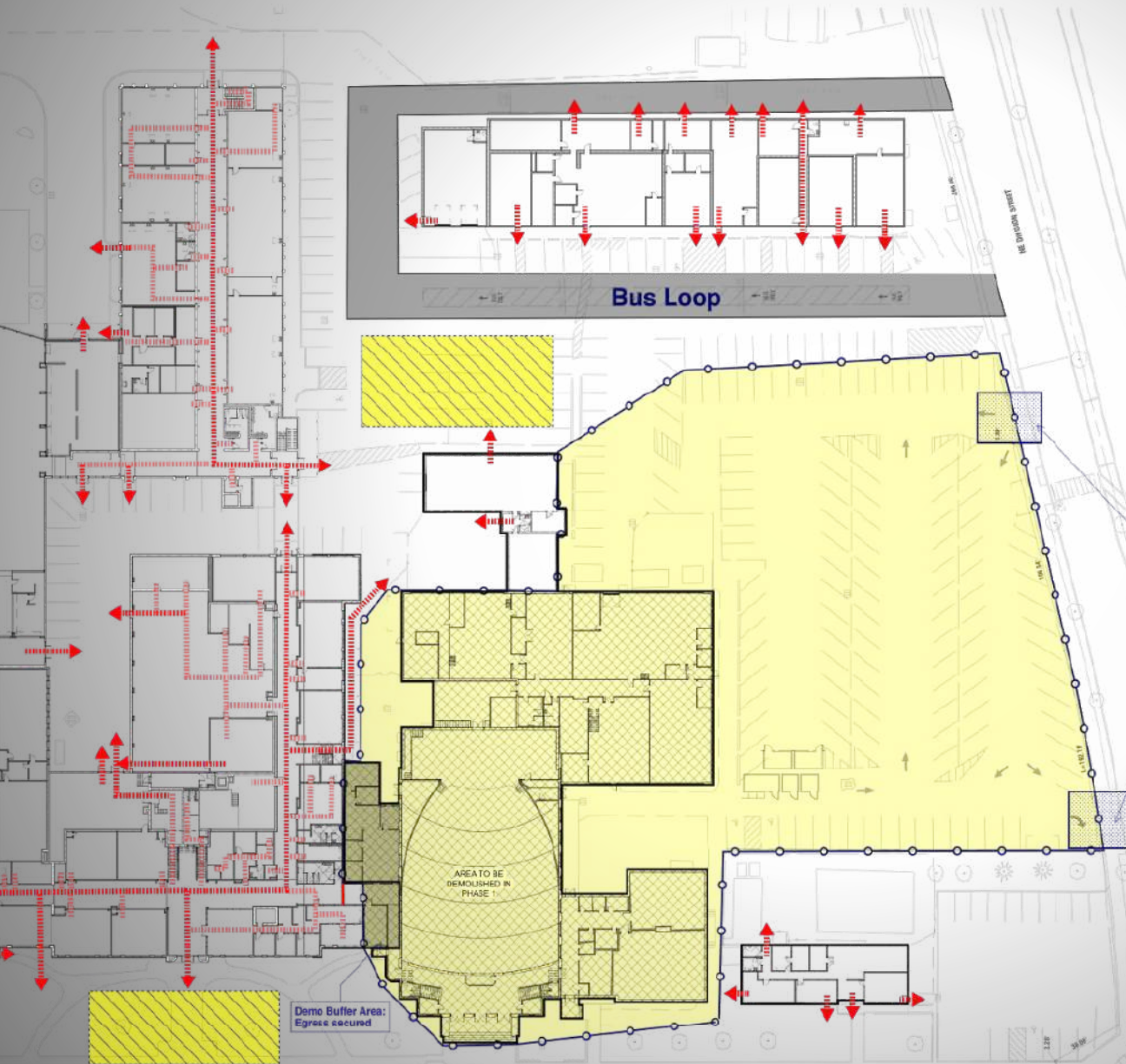
Phase 1
Demo Area



Emergency
Assembly Area



Construction Area
Access (only):
Entrance Drives



PERMIT SET

GRESHAM HIGH SCHOOL
RECONSTRUCTION &
MODERNIZATION
GRESHAM BARLOW SCHOOL DISTRICT






construction phasing

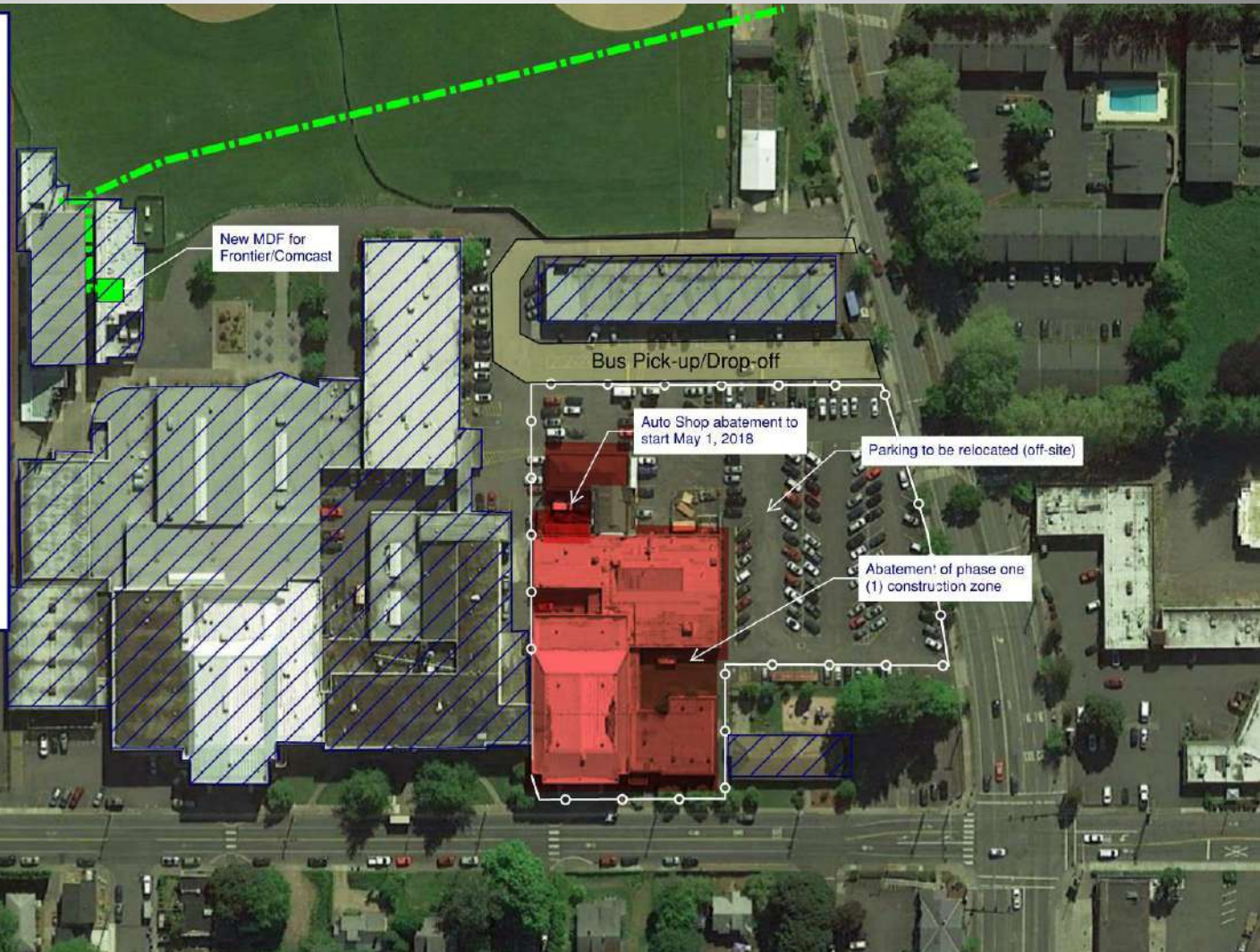
Gresham High School

Early Abatement (For Phase 1)

April 1, 2018 - June 18, 2018 (78 days)

- Abatement of phase one buildings to be demo'd
- Auto Shop abatement & demo start (May 1, 2018)
- New MDF (Frontier & Comcast) room and conduit.

-  - Abatement activities
-  - New construction
-  - Occupied
-  - Construction fencing
-  - Temp shoring or skin



Gresham High School
1200 N Main Ave
Gresham, OR

Design Commission
City of Gresham 10.18.17

TRANSITION

MAIN STREET FAÇADE - Historic transitioning to new



Gresham High School
1200 N Main Ave
Gresham, OR

Design Commission
City of Gresham 10.18.17

COMMUNITY THEATER

MAIN STREET FACADE— view from intersection looking east



Gresham High School
1200 N Main Ave
Gresham, OR

Design Commission
City of Gresham 10.18.17

PHASE 1C

Entire 2018-19 School Year

- Band – Upper Mat Room
- Choir – Cafeteria NE Corner (Risers)
- Drama – Lower Mat Room
- Hoan Tran, Art – 117 (Built Out)
- Brad Cook, CTE – Library (Built Out)
- Counseling offices - 240 (built out)

PHASE 1C

Classrooms / Office displacement for the 2018-19 School Year

- M. Peterson (508) – to Old Staff Lunch Room
- Counseling (167) – to 240 – Build Out
- ELL Office (237) – to 232 (East Faculty Room)
- SUN (104) – to 107
- Career Center (107) to 237
- In school suspension (105) – Coaches' Conference Room (128)
- Independent Study – Media Center
- TRIO/College Possible – RM 111 (Office Space)

PHASE 1C

2018-19 School Year – Teachers Affected

- 153 – Thomas
- 156 – Carlisle
- 159 – Armstrong
- 241 – Malan
- 243 – Sage
- 244 – K. Nelson
- 244 – Leavenworth

PHASE 1C

2018-19 School Year – Teachers Affected

- 238 – Fortgang
- 236 – Hakala Corum
- CHILD DEV – 411/House Across the street
- Assistant Principals – 104

PHASE 1C

2018-19 School Year – Teachers Affected

Questions / Comments / Thoughts?