

Four Corners

If you were traveling in this region, which one of these locations would you want to visit most? Vote with your feet!

- Moscow, Russia
 - Trans Siberia Railroad Journey
 - The Aral Sea
 - Lake Baikal
-
- Be prepared to talk to a partner about why!!



Physical Geography Russia and the Eurasian Republics

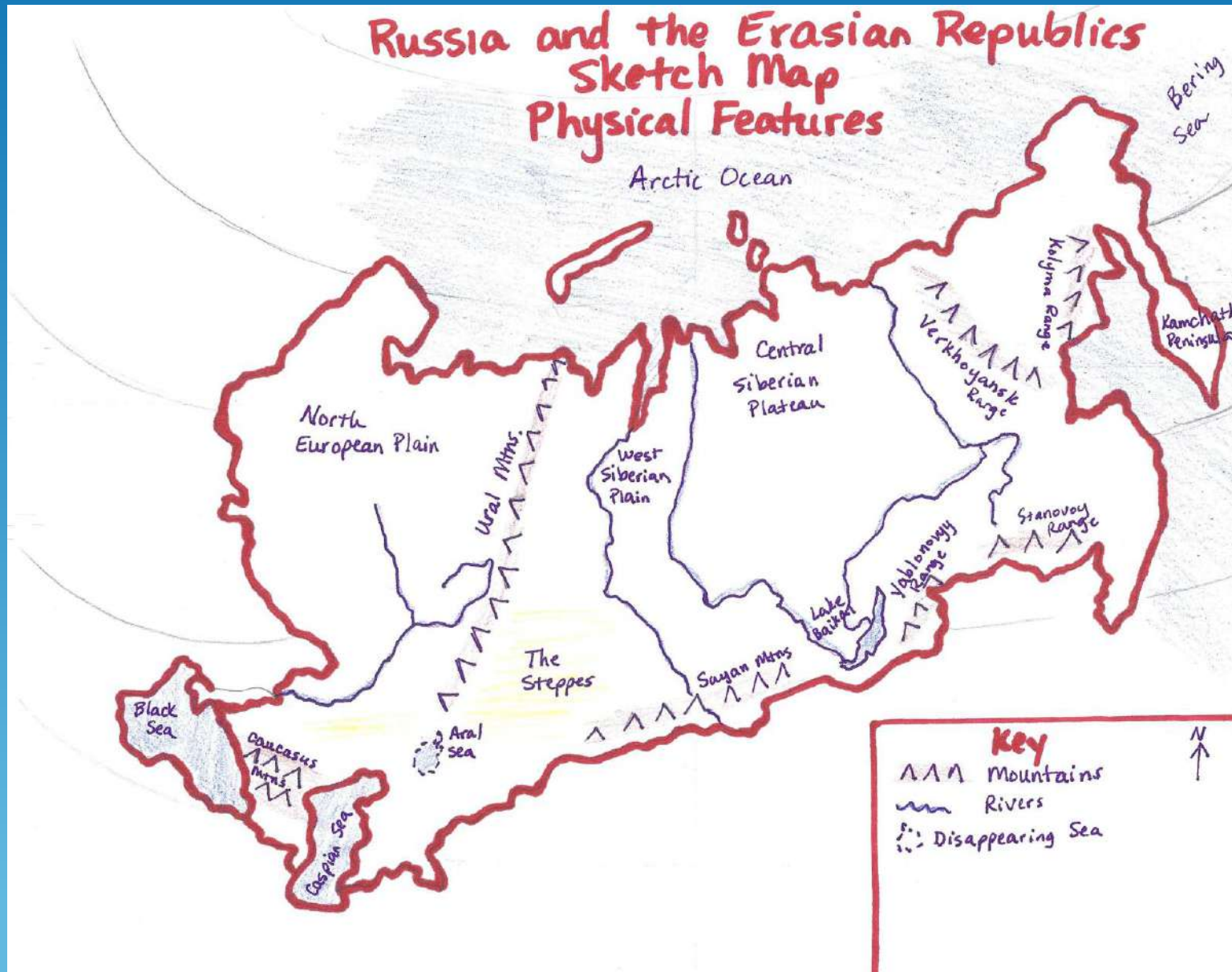


Miss Hyman

Sketch Map: Physical Map of Russia and the Eurasian Republics

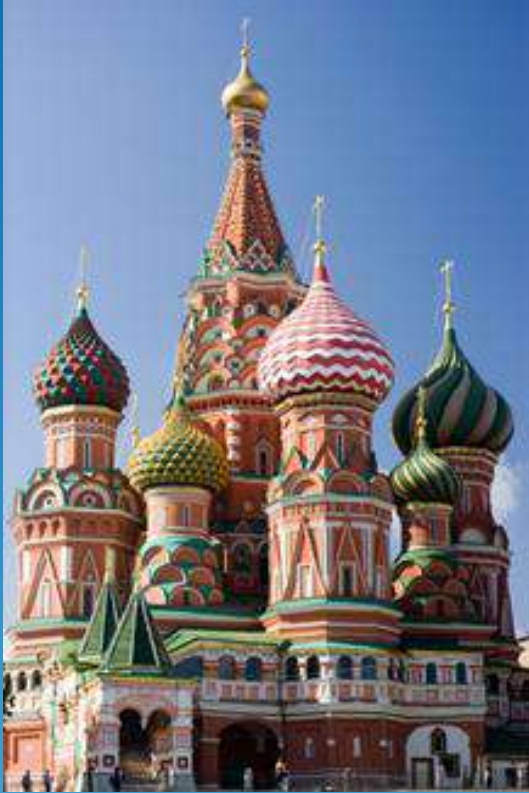
- Use the maps on pages 334, 335, 346
- Draw/Label the required physical landforms/features:
 - Bodies of Water: Arctic Ocean, Black Sea, Caspian Sea, Aral Sea, Lake Baikal, Lena River, Yenisey River, Ob River, Volga River
 - Mountains: Ural, Caucasus, Sayan, Yablonovyy, Stanovaoy, Verkhoyansk, Kolyma
 - Plains: North European Plain, West Siberian Plain
 - Plateaus: Central Siberian Plateau
 - Peninsulas: Kamchatka Peninsula
 - The Steppes
- Color as need to give information
- Create a key to help interpret the map

Sample Sketch Map





Moscow, Russia





July - September, 1989

October 5, 2008

The Aral Sea as seen from space





Lake Baikal



Let's Explore the Region!

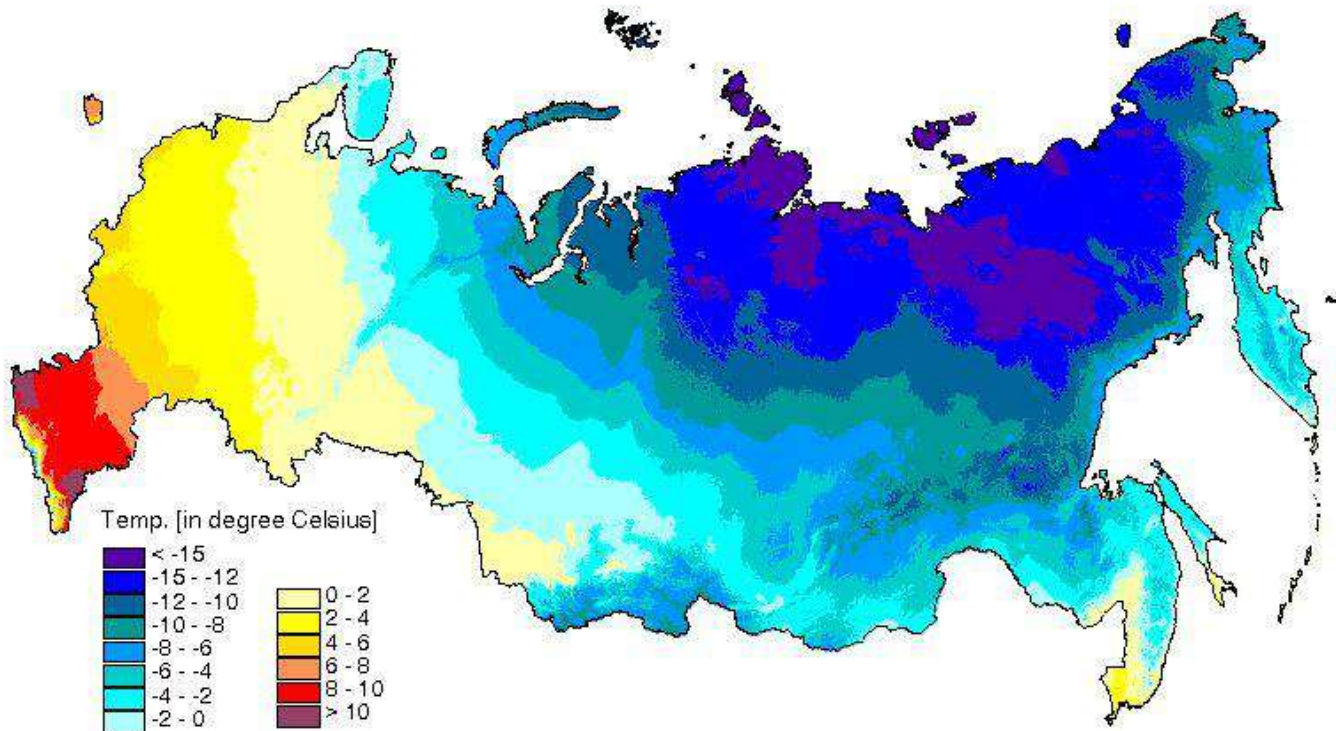
- Turn to the Physical Map of Russia and the Eurasian Republics on page 334 in your book. Two books per table.
- Open the envelope containing the absolute locations (longitude and latitude) of physical locations in the region.
- Keep a log of what you find
- 6 minutes
- <http://www.online-stopwatch.com/large-stopwatch/>

Let's Check Your Exploration Log

Location A (45°N, 60° E) Aral Sea	Location B (5°N, 35° E) North European Plain	Location C (50°N, 45° E) Volga River
Location D (55°N, 160° E) Kamchatka Peninsula	Location E (53°N, 108° E) Lake Baikal	Location F (43°N, 45° E) Caucasus Mountains
Location G (55°N, 60° E) Ural Mountains	Location H (65°N, 110° E) Central Siberian Plateau	Location I (45°N, 70° E) The Steppes

Climate of Russia and the Eurasian Republics

Mean Annual Temperature in Russia



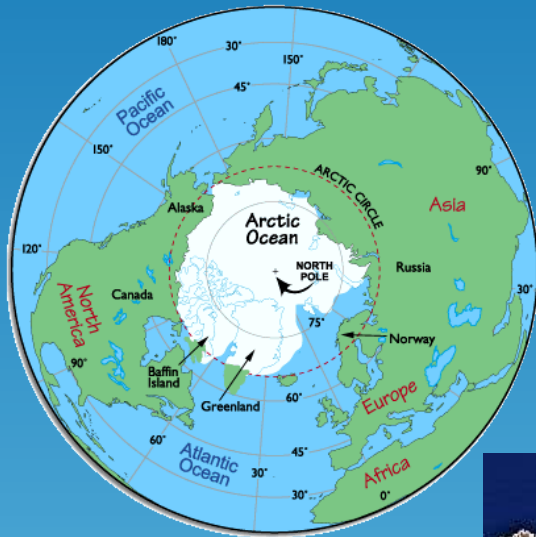
Where would you want to live? Explain why.

Where do most people in the region live? Why?

Russia's Population



Let' Remember



New Vocabulary: Let's Learn It!

Page 344

Tundra



Taiga



Steppes



What is it?
Where is it located?
Why is it there?

Four Corners

If you were traveling in this region, which one of these locations would you want to visit most? Vote with your feet!

- Moscow, Russia
 - Trans Siberia Railroad Journey
 - The Aral Sea
 - Lake Baikal
-
- Be prepared to talk to a partner about why!!

