

Today's Artist: Geoffrey Todd Smith



He uses a series of small geometric shapes to form fields of brightly colored, abstract images drawn with gel pens on a variety of papers. These often include collaged elements or shapes painted in gouache. This limited vocabulary of hand drawn marks and simple shapes is brought to a horror vacui fever pitch, leaving the viewer caught in a dizzying haze. Geometry, though still present, is softened or dissolved to varying degrees by scales, spikes and swirls of overlapping color.

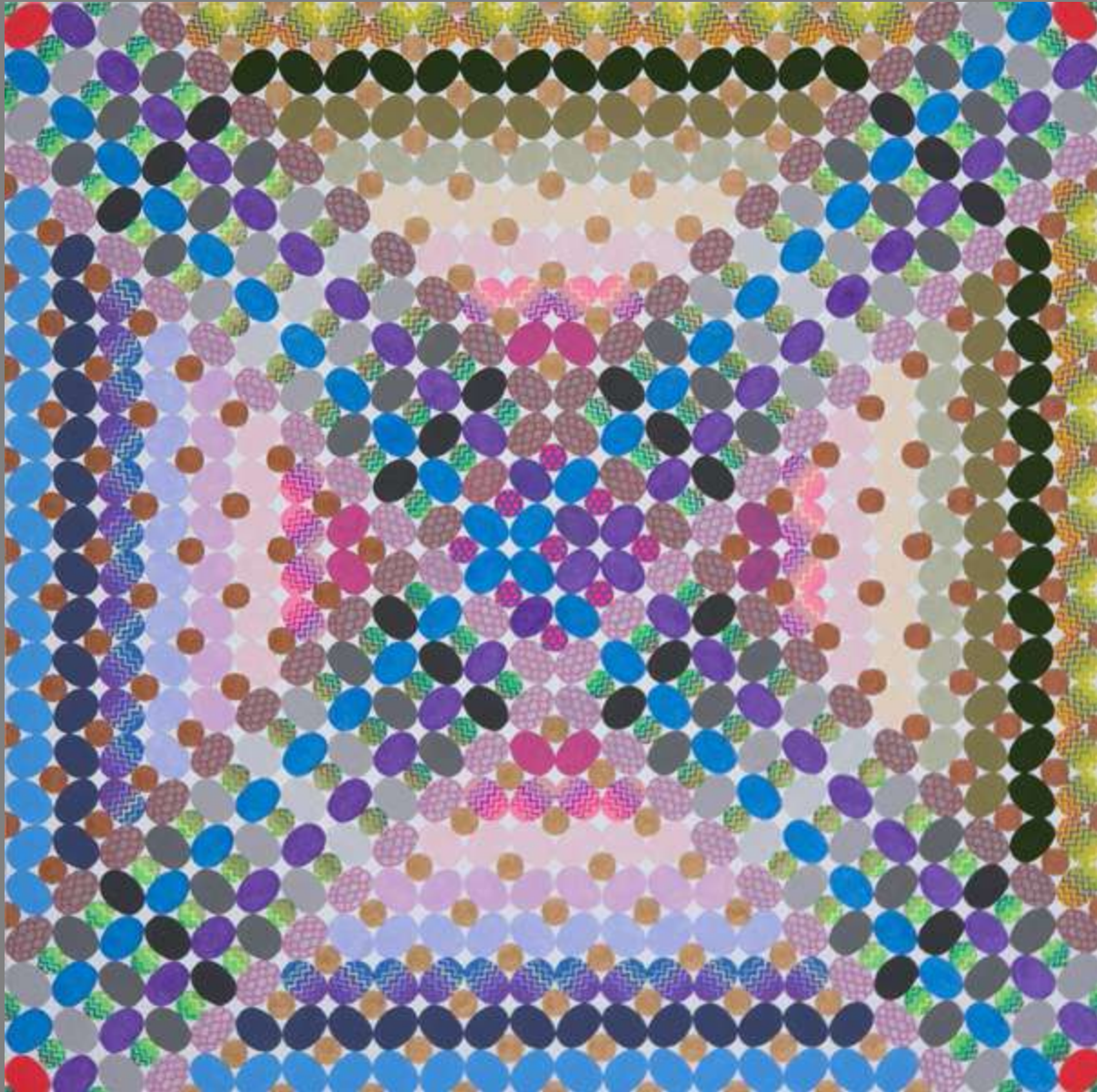
Today's Artist: Geoffrey Todd Smith



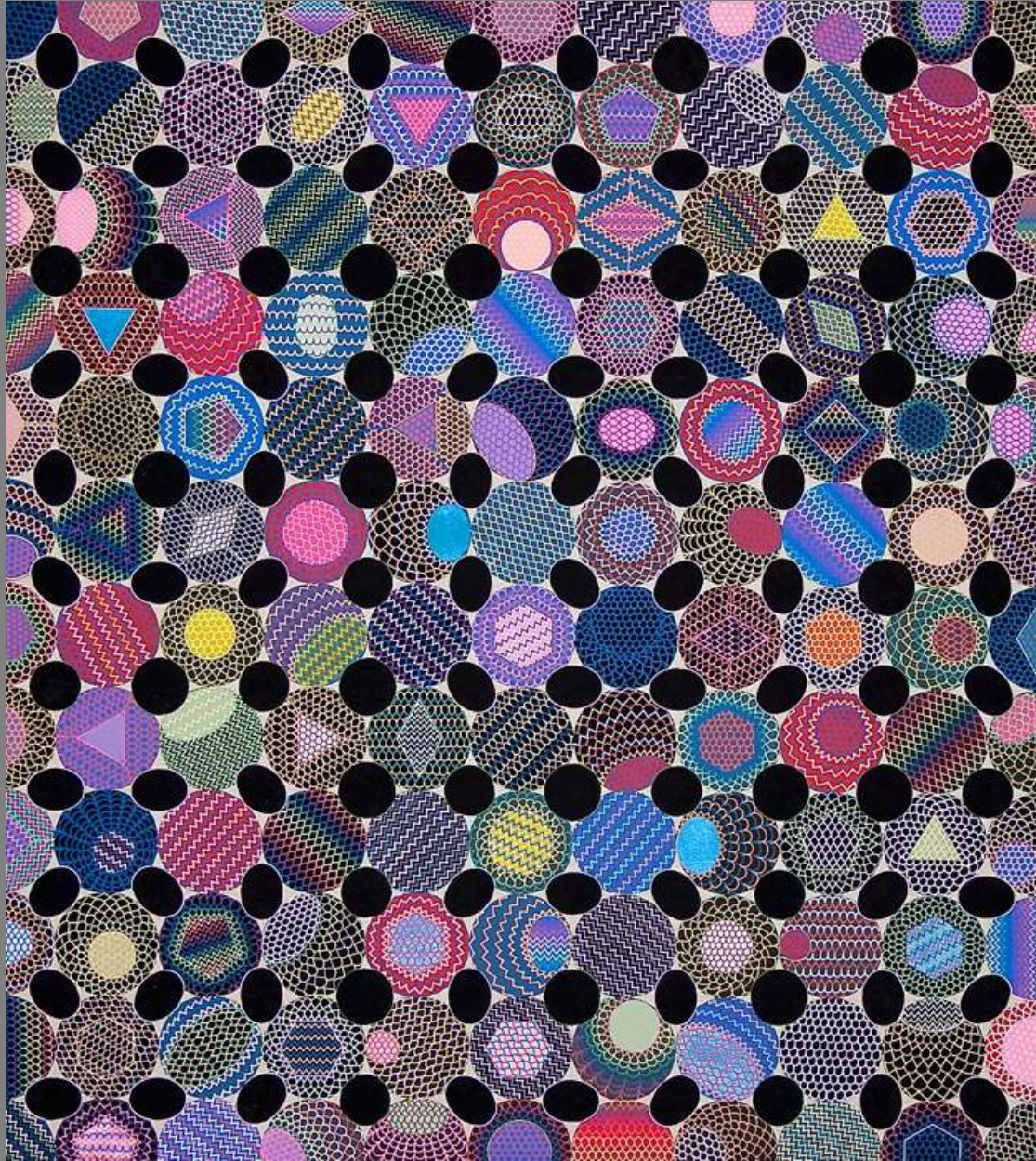
Today's Artist: Geoffrey Todd Smith



Today's Artist: Geoffrey Todd Smith



Today's Artist: Geoffrey Todd Smith



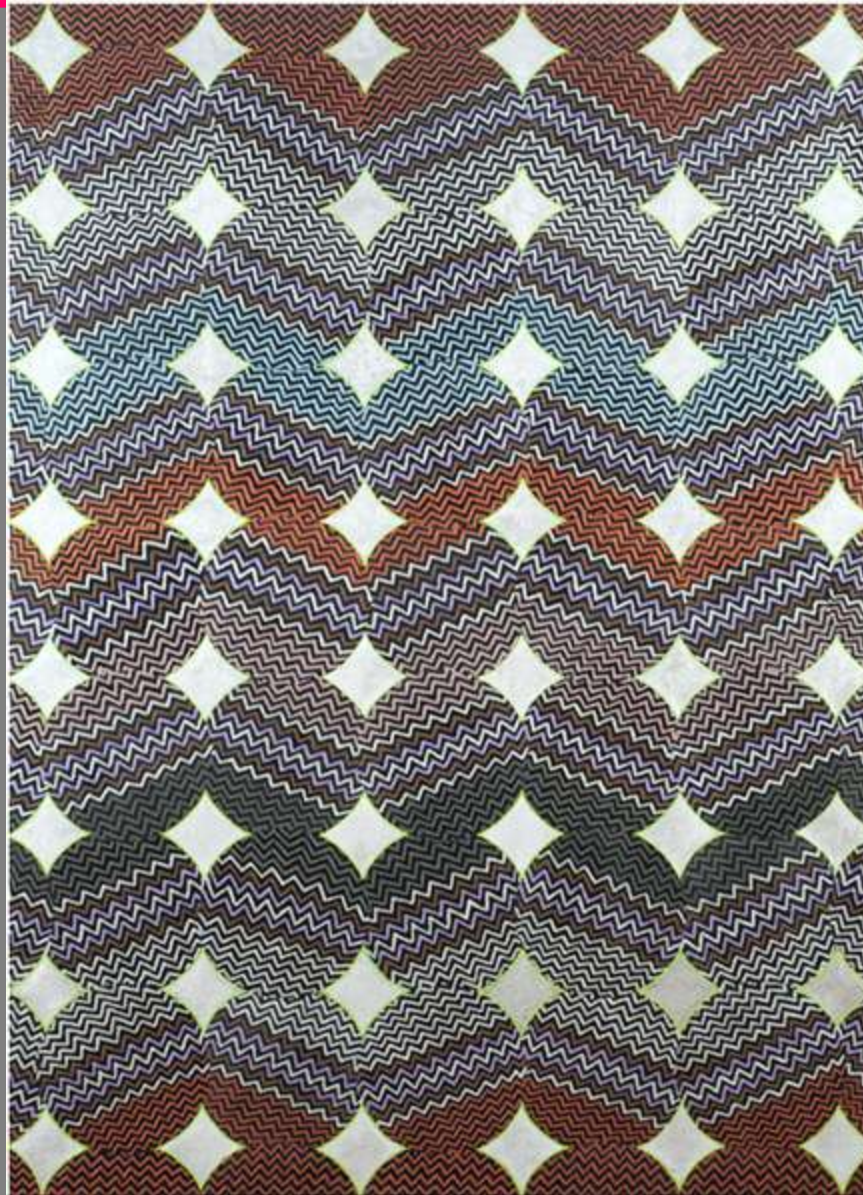
Today's Artist: Geoffrey Todd Smith



Today's Artist: Geoffrey Todd Smith



Today's Artist: Geoffrey Todd Smith



Today's Artist: Geoffrey Todd Smith



Today's Artist: Geoffrey Todd Smith



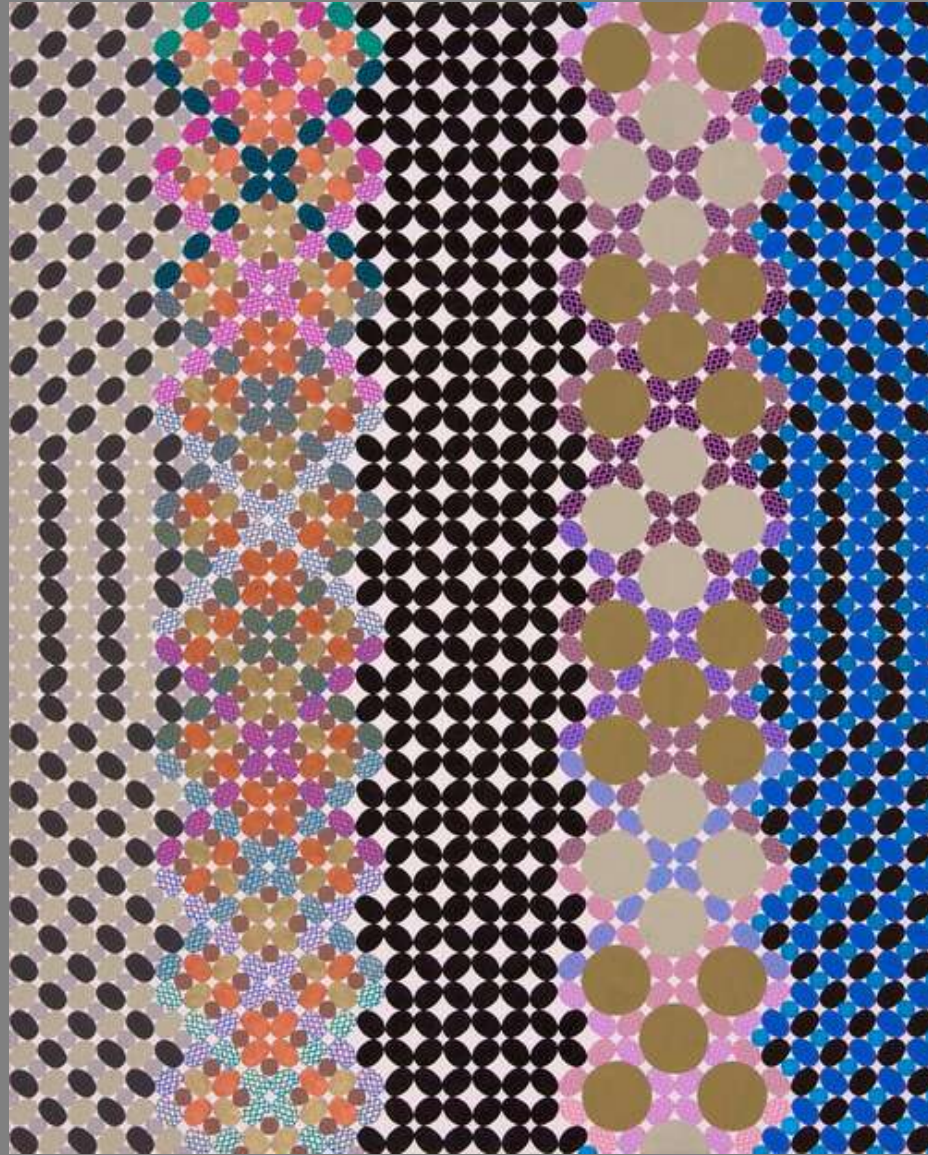
Today's Artist: Geoffrey Todd Smith



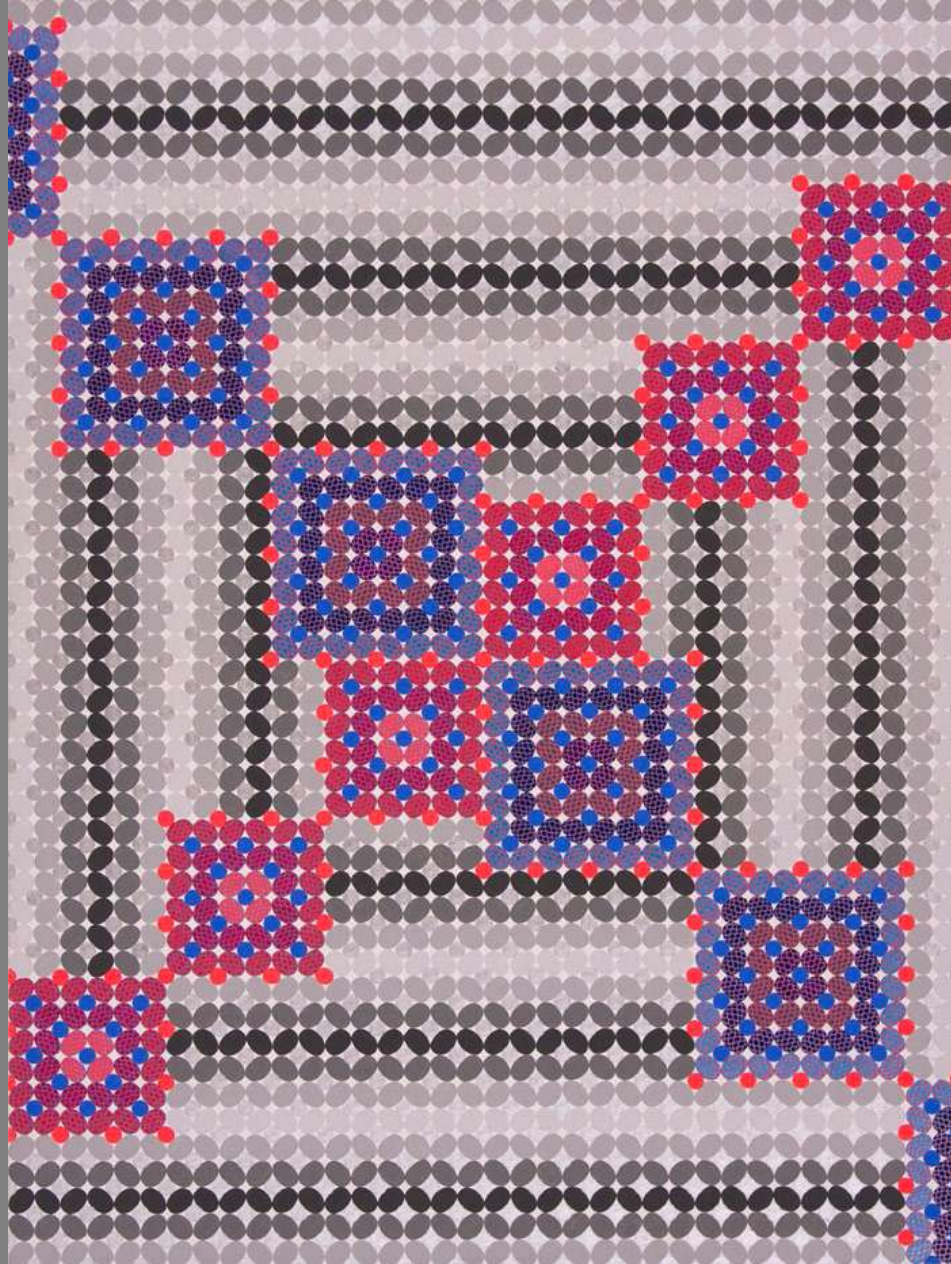
Today's Artist: Geoffrey Todd Smith



Today's Artist: Geoffrey Todd Smith



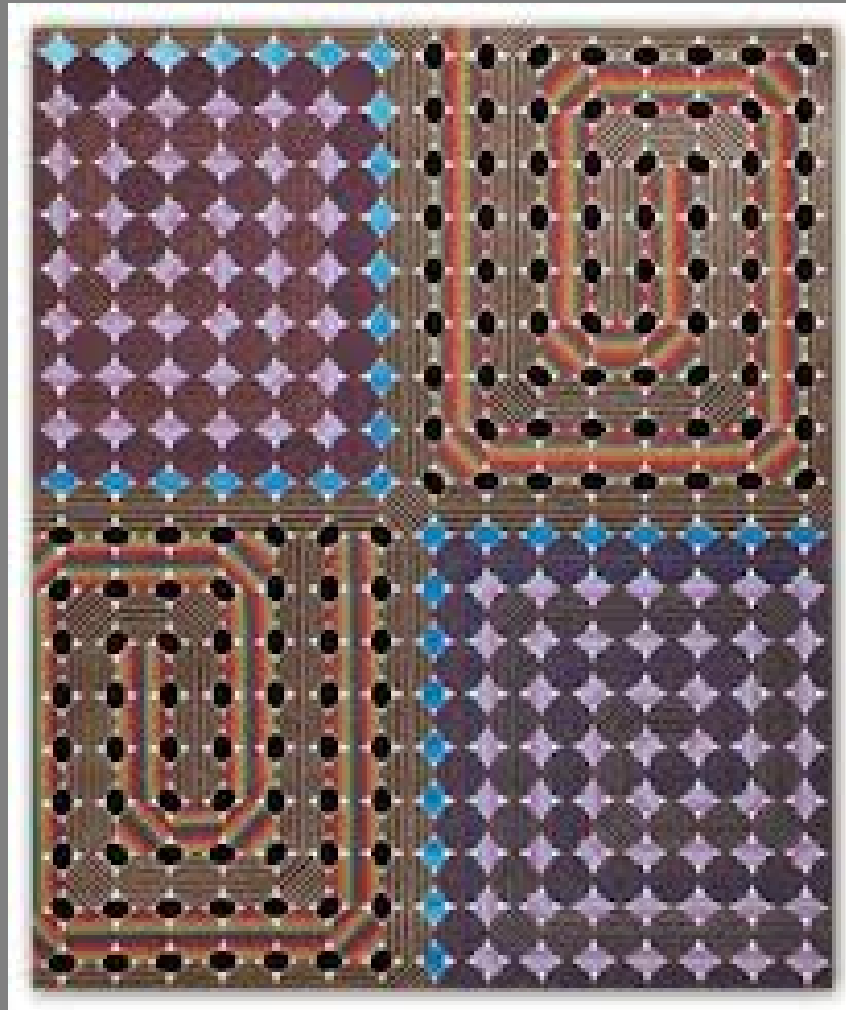
Today's Artist: Geoffrey Todd Smith



Today's Artist: Geoffrey Todd Smith



Today's Artist: Geoffrey Todd Smith



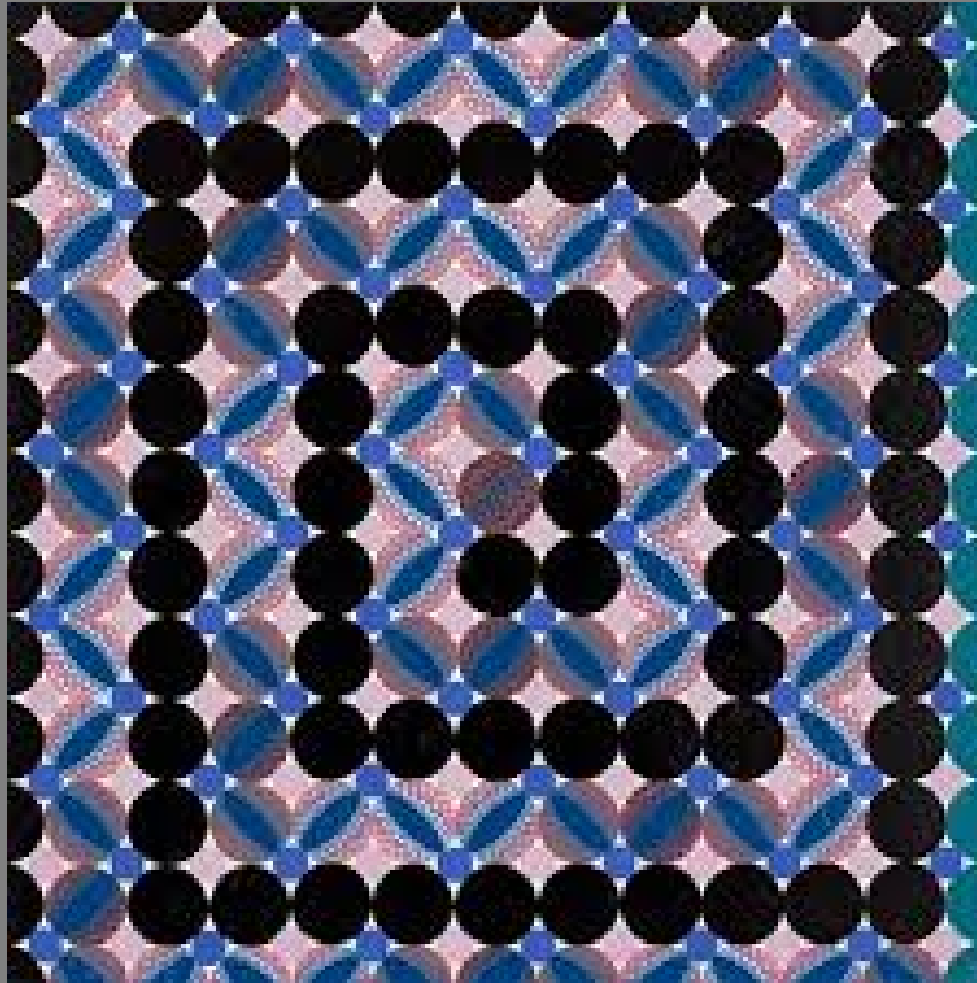
Today's Artist: Geoffrey Todd Smith



Today's Artist: Geoffrey Todd Smith



Today's Artist: Geoffrey Todd Smith



Today's Artist: Geoffrey Todd Smith



Today's Artist: Geoffrey Todd Smith



Today's Artist: Geoffrey Todd Smith



Today's Artist: Geoffrey Todd Smith



Today's Artist: Geoffrey Todd Smith

