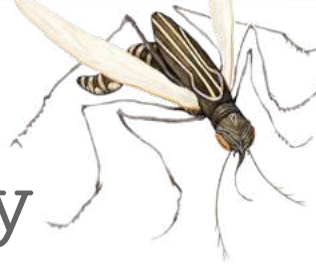


Grade 6

100 Lesson Pathway



Amplify ELA offers 180 days of instruction, but we know that teachers may want to reserve some instructional time for other favorite projects. Here's an abridged version of the curriculum that ensures full standards coverage in only 100 lessons. This pathway includes five reading assessments, two essays, and a mix of informational and literary texts. You can always add on Quests, Poetry in America, Novel Guides, and all your other favorite content.



6A

Dahl & Narrative

17 Lessons



SUB-UNITS (Lessons)

Get Started (1–4)

Boy: *Tales of Childhood* by Roald Dahl (1–12)

Dahl & Narrative Reading Assessment

READING Informational Text	RI.6.1, RI.6.2, RI.6.3, RI.6.4, RI.6.5, RI.6.6, RI.6.10
WRITING*	W.6.1, W.6.1.B, W.6.2, W.6.3, W.6.3.B, W.6.3.D, W.6.5, W.6.6, W.6.9.B, W.6.10
SPEAKING & LISTENING	SL.6.1, SL.6.1.A, SL.6.1.B, SL.6.1.C, SL.6.1.D, SL.6.6
LANGUAGE[†]	L.6.1, L.6.2, L.6.3, L.6.4, L.6.4.A, L.6.4.C, L.6.4.D, L.6.5, L.6.6



6B

Mysteries & Investigations

21 Lessons



SUB-UNITS (Lessons)

The Secret of the Yellow Death by Suzanne Jurmain (1–15)

Write an Essay (1–5)

Mysteries & Investigations Reading Assessment

READING Informational Text	RI.6.1, RI.6.2, RI.6.3, RI.6.4, RI.6.5, RI.6.6, RI.6.7, RI.6.8, RI.6.9, RI.6.10
WRITING*	W.6.1, W.6.2, W.6.2.A, W.6.2.B, W.6.2.C, W.6.2.D, W.6.2.E, W.6.2.F, W.6.3, W.6.4, W.6.5, W.6.6, W.6.9, W.6.9.B, W.6.10
SPEAKING & LISTENING	SL.6.1, SL.6.1.A, SL.6.3
LANGUAGE[†]	L.6.1, L.6.2.B, L.6.3, L.6.3.B, L.6.4, L.6.4.A, L.6.4.C, L.6.4.D, L.6.5, L.6.5.C, L.6.6



6C

The Chocolate Collection

25 Lessons



SUB-UNITS (Lessons)

Information Literacy (1–4)

Scavenger Hunt and Internet Research (1–4)

Argumentative Writing and Collection Research (1–4)

Debate and Internet Research (1–4)

Write an Essay[§] (1–8)

The Chocolate Collection Reading Assessment

READING Literature	RL.6.1, RL.6.7, RL.6.9, RL.6.10
READING Informational Text	RI.6.1, RI.6.4, RI.6.6, RI.6.7, RI.6.8, RI.6.9, RI.6.10
WRITING*	W.6.1, W.6.1.A, W.6.1.B, W.6.1.C, W.6.1.D, W.6.1.E, W.6.2, W.6.3, W.6.4, W.6.5, W.6.6, W.6.7, W.6.8, W.6.9, W.6.9.B, W.6.10
SPEAKING & LISTENING	SL.6.1, SL.6.1.A, SL.6.1.D, SL.6.2, SL.6.3, SL.6.4, SL.6.5, SL.6.6
LANGUAGE[†]	L.6.1, L.6.2, L.6.2.B, L.6.3, L.6.4.A, L.6.4.C, L.6.4.D, L.6.5.B



Grade 6

100 Lesson Pathway



6D

The Greeks

14 Lessons



SUB-UNITS (Lessons)

Prometheus (1–6)

Odysseus (1–7)

The Greeks Reading Assessment

READING Literature	RL.6.1, RL.6.2, RL.6.3, RL.6.4, RL.6.5, RL.6.6, RL.6.7, RL.6.10
WRITING*	W.6.1, W.6.2, W.6.3, W.6.9, W.6.9.A, W.6.10
SPEAKING & LISTENING	SL.6.1, SL.6.1.A, SL.6.1.B, SL.6.2, SL.6.4
LANGUAGE†	L.6.4.C, L.6.4.D, L.6.5.C



6E

Summer of the Mariposas

22 Lessons



SUB-UNITS (Lessons)

Summer of the Mariposas by Guadalupe Garcia McCall
(1–21)

Summer of the Mariposas Reading Assessment

READING Literature	RL.6.1, RL.6.2, RL.6.3, RL.6.4, RL.6.5, RL.6.6, RL.6.7, RL.6.9, RL.6.10
READING Informational Text	RI.6.1, RI.6.2, RI.6.4, RI.6.7, RI.6.9, RI.6.10
WRITING*	W.6.1, W.6.2, W.6.2.D, W.6.8, W.6.9, W.6.9.A, W.6.10
SPEAKING & LISTENING	SL.6.1, SL.6.1.A, SL.6.1.D, SL.6.5
LANGUAGE†	L.6.3, L.6.4.C, L.6.4.D, L.6.5.A, L.6.5.C

* This pathway includes narrative writing instruction but does not address narrative writing sub-standards W.6.3.A, W.6.3.C, and W.6.3.E. For additional narrative writing instruction that addresses these standards, we recommend Lessons 1–3, 6–8, 15–16, and 21–22 in the Beginning Story Writing unit.

† To ensure full coverage of the Language standards, we recommend using part of each Flex Day to work on grammar instruction. There are a total of 14 Flex Days in which to cover 7 grammar standards: L.6.1.A, L.6.1.B, L.6.1.C, L.6.1.D, L.6.1.E, L.6.2.A, and L.6.3.A. See the Grammar Pacing Guide for more information.

§ This essay provides a choice of two prompts. To ensure full standards coverage, assign the argumentative prompt.

