

Chapter 6 Exit Exam – Space Management - Key

Name: _____ Date: _____ Score: _____

Multiple Choice - Circle the best answer.

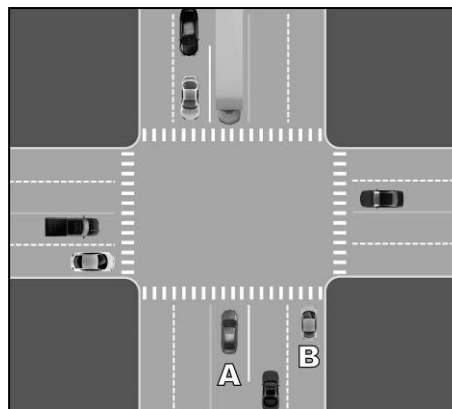
1. You are the driver in the photo on the right. The traffic light in the target area is red. What is the best speed control option to use at this moment to time your arrival for a green light?
- Maintain speed, apply brake when arriving at the light.
 - Decelerate, reduce speed gradually.**
 - Apply brake, reduce speed abruptly.
 - Cover brake, be ready to apply brake when you reach stopped traffic ahead.



2. When turning at an intersection, the greatest exposure to potential conflicts occur while making a
- stopped left turn**
 - stopped right turn
 - moving left turn
 - moving right turn

Use the graphic on the right to answer questions 3 – 5.

3. You are the driver of car A. You intend to turn left and have a solid green traffic light. Where should you wait while yielding to oncoming traffic?
- Wait in the crosswalk with your wheels turned left.
 - Wait behind the crosswalk with your wheels turned left.
 - Wait in the intersection with your wheels straight.
 - Wait behind the crosswalk with your wheels straight.**
4. What 4 pieces of information do you need to gather while you're stopped and waiting to turn at a traffic light?
- rear condition, gap to enter, path LFR, light change**
 - left path, front gap, right path, rear condition
 - rear condition, left path, pedestrian light, gap to enter
 - left path, speed limit, light change, right path



5. You are the driver of car B and your traffic light is a red arrow. A right turn on this light is
- allowed, stopping is not required, but you must search and yield to traffic and pedestrians
 - allowed only if a sign is posted permitting the turn
 - never allowed, you must wait for a green light
 - allowed only after you stop, search, and yield to other traffic and pedestrians**
6. A flashing yellow arrow like the one pictured on the right means you are required to do what?
- Stop.
 - Stop unless you have passed the point of no return.
 - Yield to oncoming traffic and pedestrians, then proceed only when clear.**
 - It is an emergency signal only.



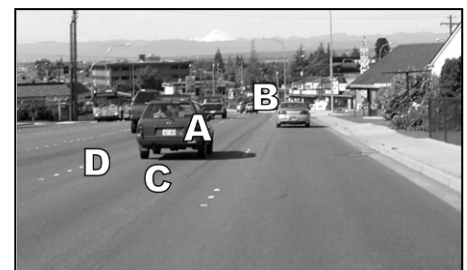
7. What is the best speed control option to use when approaching a stale green traffic light?
 - a. maintain speed
 - b. decelerate
 - c. **cover brake**
 - d. apply brake
8. The point of no return is the place where you are no longer able to stop without entering that space. How many seconds away from the front of your vehicle is the point of no return?
 - a. one second
 - b. **two seconds**
 - c. three seconds
 - d. four seconds
9. You are approaching a stale green traffic light when the light turns yellow. In most cases you should
 - a. signal for a right turn and slow
 - b. check the intersection and go through it if clear
 - c. accelerate to clear the intersection
 - d. **check the rear zone and make every reasonable effort to stop**

Use the diagram on the right to answer questions 10 & 11.

10. You are the driver in the right lane. What communication options will you use as you prepare to change lanes?
 - a. right signal, LP1, increase speed
 - b. left signal, LP1, maintain speed
 - c. **left signal, LP2, maintain speed**
 - d. left signal, LP3, increase speed
11. The driver in the left lane increases speed aggressively in response to your communications. How should you solve that problem?
 - a. Apply the brake, wait for the vehicle to pass.
 - b. Increase speed quickly and change lanes in front of the passing vehicle.
 - c. **Abort the lane change, wait for the vehicle to pass, and do not engage the passing driver.**
 - d. Abort the lane change, honk at the passing vehicle.



12. You're the driver in the photo on the right. Where should your central vision be focused as you change lanes to the left?
 - a. on the front vehicle
 - b. **on the target area**
 - c. on the center of the lane
 - d. on the left edge of the lane

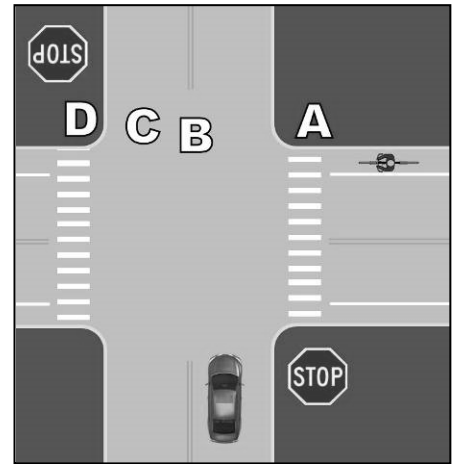


13. What is the correct side position to use when approaching a back-in parking space on the right?
 - a. 2 - 4 feet away from the space
 - b. **3 feet away from the space**
 - c. 6 - 8 feet away from the space
 - d. 6 feet away from the space

14. Drivers are required to yield to pedestrians
- at all marked or unmarked crosswalks
 - only where a crosswalk is painted on the ground**
 - only when pedestrians have a walk light
 - all of the above

15. In the graphic illustration on the right, a pedestrian is waiting to cross the roadway from position A to position D and the cyclist is traveling in the same direction. The driver intends to continue forward through the intersection. What are the driver's yielding responsibilities?

- Yield to the cyclist only. The pedestrian must wait in position **A** until it is safe to cross because there is no crosswalk.
- Yield to the cyclist and pedestrian. Wait for the pedestrian to clear the driver's lane.**
- Yield to the cyclist and pedestrian. Wait for the pedestrian to clear driver's lane and half of the next lane.
- Yield to the cyclist and pedestrian. Wait for the pedestrian to cross the driver's lane and one more full lane.



True or False – Circle T if the statement is true or F if the statement is false.

- T** F Stopping in traffic increases the chances of a rear-end collision.
- T** F Using a cell phone to talk, text, take video or photos while driving is extremely dangerous.
- T** F Emotions unrelated to driving can have a negative effect on your ability to drive.
- T** F Decreasing or eliminating distractions while driving is a good way to avoid collisions.
- T** F Arriving at a green light instead of a red decreases your chance of conflict to the front, rear and side.
- T** F Before changing lanes, check for any closed or unstable condition to the front, rear, and blind spot.
- T** F Cyclists are considered vehicles and are permitted to occupy a full driving lane.
- T** F When passing a cyclist, leave enough room between your vehicle and the cyclist to prevent any contact with a rider that may fall into your lane of travel.
- T** F When pedestrians are crossing at a traffic light, drivers must wait until the pedestrian has crossed out of the driver's lane.
- T** F It is illegal for all drivers to text while driving. Use of a cell phone using a hands free device is legal for drivers 18 years and older.