

Chapter 2 Exit Exam - Knowing Where You Are

Name: _____ Date: _____ Score: _____

Multiple Choice Questions – Circle the letter of the best answer

1. The purposes of traffic signs are
- to direct, to decide, to stop
 - to observe, to direct, to guide
 - to stop, to warn, to decide
 - to regulate, to warn, to guide

2. A red circle and diagonal slash on a sign means that
- a hazard is ahead
 - the action is not allowed
 - diagonal crossing is permitted
 - two roads intersect ahead



3. Your traffic light changes to yellow as you approach an intersection. In most cases, what action should you take?
- Signal for a right turn and slow.
 - Go through if no other vehicles are coming.
 - Accelerate to clear the intersection.
 - Make every reasonable effort to stop.

4. A sign with an orange background in a diamond or rectangular shape indicates a
- recreation area
 - speed zone
 - construction zone
 - school zone



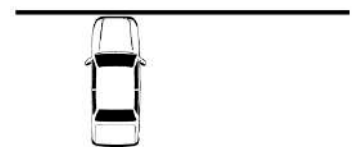
5. What is the standard reference point for 3-6 inches away from a line on the right as illustrated?
- Approximately one foot from the left corner of hood
 - Center of the hood
 - Middle of the right half of the hood
 - Corner post or side mirror



6. What is the standard reference point for 3 feet away from a line on the right as illustrated?
- Approximately one foot from the left corner of hood
 - Center of the hood
 - Middle of the right half of the hood
 - Corner post or side mirror



7. What is the standard reference point for 3 – 6 inches from a line to the front as illustrated?
- Approximately one foot from the left corner of hood
 - Center of the hood
 - Middle of the right half of the hood
 - Corner post or side mirror

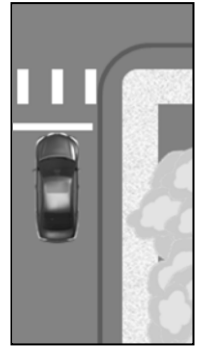


8. What is the standard reference point for 3-6 inches away from a line on the left as illustrated?
- Approximately one foot from the left corner of hood
 - Center of the hood
 - Middle of the right half of the hood
 - Corner post or side mirror



9. Which of the following potential stop positions is illustrated in the diagram to the right?

- a. Staggered stop position
- b. Legal stop position
- c. Safety stop position
- d. None of the above



10. Your car is positioned as illustrated in the diagram to the right, and your view is blocked. Which of the following stop positions will you use to get a better view?

- a. Staggered stop position
- b. Legal stop position
- c. Safety stop position
- d. None of the above

11. What is the correct side position to begin a precision right turn where no bike path is present

- a. 6 feet away from the right edge of the roadway
- b. 3-6 inches away from the right edge of the roadway
- c. 3 feet away from the right edge of the roadway
- d. 8 feet away from the right edge of the roadway



12. The photograph on the right indicates what?

- a. The forward position to begin a stopped right turn
- b. The safety stop position
- c. The front bumper is aligned with the edge of the roadway
- d. All of the above

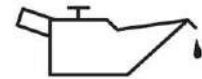
True or False – Circle T if the statement is true or F if the statement is false

13. T F The speed limit in a school zone is 20 mph.

14. T F The odometer in your car measures total miles traveled.

15. T F A hole in traffic is larger than a gap in traffic.

16. T F When this symbol appears on the dash, it is time to change the oil.



17. T F To effectively search an intersection from a stopped position, you should look 90° left, right, and then left again.

Use the diagram to the right to answer questions 18 – 20, circle the best answer

18. Car A is in which lane position (LP)?

LP1, LP2, LP3, LP4, LP5

19. Car B is in which lane position (LP)?

LP1, LP2, LP3, LP4, LP5

20. Car C is in which lane position (LP)?

LP1, LP2, LP3, LP4, LP5

