

A. Chapter 8 Exit Exam - Creating Open Space

Name: _____ Date: _____ Score: _____

Multiple Choice - Circle the best answer.

Use photo on the right to answer questions 1 & 2.

1. Your right front zone is closed by the cyclist approaching the intersection. What is the fixed zone condition that requires you to arrive at each closure at separate times?
 - a. the crosswalk at the intersection
 - b. the median in the left front zone
 - c. the trees in the right front zone
 - d. the vehicle ahead
2. How will you time your arrival to the intersection to get one open zone to the side?
 - a. Stay in LP1, increase speed, and pass the cyclist before you reach the intersection.
 - b. Reduce speed, stay in LP1, allow the cyclist to enter and exit the intersection before you.
 - c. Move to lane position 2, increase speed, and pass the cyclist in the intersection.
 - d. Apply brake, move to LP3, and honk to force the cyclist out of your way.



Use photo on the right to answer question 3 & 4.

3. You are the driver in the photo on the right. What are the conditions of your left, front, and right zones?
 - a. all zones open
 - b. all zones closed
 - c. left front closed/moving, right front closed/fixed, front open
 - d. left front closed/fixed, right front closed/fixed, front open
4. What are your best lane position and speed control options at this moment?
 - a. LP2, reduce speed
 - b. LP1, reduce speed
 - c. LP3, reduce speed
 - d. LP1, maintain speed
5. Alcohol is a
 - a. depressant
 - b. medicine
 - c. hallucinogen
 - d. stimulant
6. Which of these driving skills is hampered by marijuana use?
 - a. reaction time
 - b. ability to judge distance
 - c. timing and coordination
 - d. all of the above



7. When people drink alcoholic beverages, their
 - a. judgment and coordination are not affected
 - b. coordination is affected before their judgment
 - c. coordination and judgment are affected at the same time
 - d. judgment is affected before their coordination
8. The only sure way to reduce the body's BAC and the degree of impairment is to
 - a. take a cold shower
 - b. wait the necessary time the body needs to eliminate the alcohol
 - c. handle a sudden emergency
 - d. consume several cups of black coffee
9. Drugs taken in combination with alcoholic beverages
 - a. tend to have their effects cancelled by the effect of alcohol
 - b. cause trouble only if a person drinks excessively
 - c. tend to have their effects multiplied, this is called the synergistic effect
 - d. can cause trouble unless a licensed physician prescribed the drug

Use the photo on the right to answer questions 10 – 12.

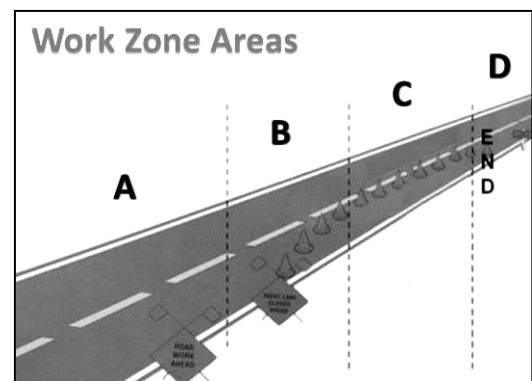
10. Which letter represents the transition area?
 - A. Construction signs are visible warnings in this area.
 - B. Traffic is moved from its normal path in this area.
 - C. Workers are present in this area during working hours.
 - D. Traffic is allowed to return to its normal path here.

11. Which letter represents the advanced warning area?
 - A. Construction signs are visible warnings in this area
 - B. Traffic is moved from its normal path in this area
 - C. Workers are present in this area during working hours
 - D. Traffic is allowed to return to its normal path here

12. Which letter represents the termination area?
 - A. Construction signs are visible warnings in this area
 - B. Traffic is moved from its normal path in this area
 - C. Workers are present in this area during working hours
 - D. Traffic is allowed to return to its normal path here

13. What is the first and most effective way to compensate for limited visibility conditions?
 - a. use low beam headlights
 - b. reduce speed
 - c. wear sunglasses
 - d. use windshield wipers

14. The speed limit is the
 - a. recommended speed for good driving conditions
 - b. fastest speed you are allowed to travel in the best conditions
 - c. fastest speed you are allowed to travel in the poorest conditions
 - d. sign that is posted on every roadway, expressway, and highway



- 15.** The two biggest influencing factors in work zone crashes are
- a. driver inattention and speeding
 - b. worker inattention and speeding
 - c. drowsiness and intoxication
 - d. lack of signage and limited visibility
- 16.** The majority of people injured and killed in work zone crashes are
- a. pedestrians
 - b. road workers
 - c. drivers and passengers
 - d. workers and bicyclists
- 17.** Which of these will help you prepare for poor driving conditions?
- a. Clean your windows and lights.
 - b. Fill your gas tank and washer reservoir.
 - c. Check tire pressure and replace old tires.
 - d. All of the above.
- 18.** The road surface can be quite slick when it first begins to rain. How long should you wait for it to wash oil from the roadway?
- a. 1 minute
 - b. 15 minutes
 - c. 20-30 minutes
 - d. 30-60 minutes

True or False – Circle T if the statement is true or F if it is false.

- 19.** T F Check tire grip just after you enter a curve.
- 20.** T F In reduced visibility conditions, vehicles appear to be closer than they really are.